



---

Anaplan Connect Guide

Version 1.4.1

(Last updated February 12, 2019)

## Table of Contents

<b>What's New in Anaplan Connect 1.4</b>	<b>v</b>
New Features in 1.4.1	v
New and Updated Features in 1.4	v
Changes to Behavior in 1.4	v
Migrating from Anaplan Connect 1.3.x.x to 1.4	v
<b>Introduction</b>	<b>1</b>
Create Scripts	1
Prerequisites	1
Firewall and Proxy Access	1
Access to Anaplan model with the actions configured	2
Java version and third-party data sources	2
If you're using an SSO-enabled workspace	2
<b>Download and Setup</b>	<b>3</b>
Creating Scripts for Anaplan Connect	3
Windows	3
Linux or Mac OS	4
<b>Configure Your Scripts</b>	<b>6</b>
Locate the Workspace ID and Model ID	6
Locate the Actions for Anaplan Connect to Perform	6
<b>Certificate Authentication</b>	<b>7</b>
Option 1: Use a Private Key with Anaplan Connect	8
Example Run script	8
Option 2: Create a Java KeyStore	9
KeyStore Wizard for Anaplan Connect 1.4	10
Use Keystore with Anaplan Connect	11
Example Run script	11
<b>Upload and Download Files</b>	<b>12</b>
Example script for upload	12
Linux or Mac OS:	12

<b>Create an Import Script</b>	<b>13</b>
Example script for Import	13
Import (basic authentication)	13
Import (certificate authorization)	13
<i>Set the Import Operation</i>	14
Linux and Mac OS example for Import	15
Model-to-model Import	15
<b>Create an Export Script</b>	<b>17</b>
Example Batch file for Export	17
Export (basic authentication)	17
Export (certificate authentication)	17
Set the Export Operation	18
<b>Create a Script to Run Other Actions</b>	<b>19</b>
Example Batch file for Delete	19
Basic Authentication	19
Certificate Authentication	19
Set the Delete operation to delete items from a list	20
<b>Create a Script to run a Process</b>	<b>22</b>
Basic Authentication	22
Certificate Authentication	22
Set the Process Operation	23
End Users versus Workspace Administrators	23
Scheduling an import or export	24
Windows	25
<i>Scheduler for Windows XP</i>	25
<i>Scheduler for Windows 7</i>	25
<i>Linux or Mac OS</i>	25
<b>Log Files in Anaplan Connect</b>	<b>26</b>
<b>Troubleshooting Tips</b>	<b>29</b>
Getting Debug Information	29
Symptoms and Remedies	29

<b>Appendix A: Network Drive as Location for Anaplan Connect</b>	<b>32</b>
<b>Appendix B: Java Compatibility</b>	<b>34</b>
Create a shell script to set the JAVA_HOME environment variable	34
Create a replacement script	34
<b>Appendix C: List of all Operation Commands</b>	<b>36</b>
Authentication Operators	36
Basic Authentication	36
CA Authentication	36
Proxy Operators	38
Required Operators	38
Action Operators	38
Import	38
Export	39
Process	40
Delete	40
Listing	40
Optional Parameters	41
<b>Appendix D: JDBC for Oracle, Access, and Excel</b>	<b>44</b>
<b>Appendix E: Import a JDBC Connection for a Microsoft SQL Server Database</b>	<b>46</b>
Preparation	46
<b>Appendix F: Sequence Diagrams</b>	<b>49</b>
Upload sequence diagram	49
Import/Export Sequence Diagram	50
<b>Appendix G: Linux and MacOS Scripts</b>	<b>51</b>
Upload and Import Using a Proxy (Authenticated Proxy)	51
Upload and Import Using a Proxy (Unauthenticated Proxy)	52
Delete Content from a Module (Basic Authentication)	53
Delete Content from a Module (Certificate Authentication)	54
Export (Basic Authentication)	55
Export (Certificate Authentication)	57
Import (Basic Authentication)	58

---

Import (Certificate Authentication) .....	59
Run a Process (Basic Authentication) .....	61
Run a Process (Certificate Authentication) .....	62

## What's New in Anaplan Connect 1.4

Welcome to Anaplan Connect 1.4. The following are changes in features and behavior in this release:

### New Features in 1.4.1

We have included steps for using your certificate Private Key in authentication. For more information, see [Certificate Authentication](#). We have included a new `-privatekey` operator to support use of a Private Key. For more information, see [Appendix C: List of all Operator Commands](#).

### New and Updated Features in 1.4

New and updated features in Anaplan Connect 1.4 include:

- Use of the new and improved Anaplan v2.0 integration API.
- Enabling customers to use certificates, obtained from public Certificate Authorities, for Anaplan authentication. For more information, see [Certificate Authentication](#).
- Enabling users to configure retry timeout and number of retries. For more information, see [Appendix C: List of all Operator Commands](#).
- Configurable chunk sizes for imports, ranging from 1 to 50 MB. For more information, see [Appendix C: List of all Operator Commands](#).
- Improved screen logging, including timestamp, classpath for debug lines, Linux process ID, and more. For more information, see [Log Files in Anaplan Connect](#).
- Better security and ease of querying using JDBCparameters moved to "properties" file.

### Changes to Behavior in 1.4

With Anaplan Connect 1.4, users can run API calls against their default Tenant only. This change provides enhanced security.



**Workaround:** If you have to access Anaplan models across multiple tenants and want to run Anaplan Connect 1.4 integrations in these tenants, create different user IDs for different Tenants and use these user IDs to run your integrations.

### Migrating from Anaplan Connect 1.3.x.x to 1.4

If you are migrating from Anaplan Connect 1.3.x.x to Anaplan Connect 1.4, you can find the necessary migration steps in **Migrating from Anaplan Connect 1.3.x.x. to Anaplan Connect 1.4** on Community:

<https://community.anaplan.com/t5/Knowledge/Migrating-from-Anaplan-Connect-1-3-x-x-to-Anaplan-Connect-1-4/ta-p/37049>

## Introduction

Anaplan Connect is an API Client with a command-line interface that supports the following types of Anaplan actions:

- import
- export
- delete - **Delete from List using Selection** to remove specific items from a list.
- process - a combination of the other types of actions
- upload

The advantages include:

- No need for manual work in the Anaplan GUI for each run. You can [schedule jobs to run automatically](#) at the interval you want
- No need to code a full-scale software application.
- Integration with Anaplan's version 2 API for enhanced security.

### Create Scripts

This document provides examples for Windows, Linux, and Mac OS operating systems. Anaplan Connect was designed to support automated and ad-hoc jobs. The examples should work as either scheduled jobs that may be regularly run from a server or workstation, as well as by users that only need to run unscheduled jobs at irregular intervals.

Example: A batch file named RunMyImport.bat that loads a text file, Europe.txt, onto the Anaplan server. If you also use a scheduling tool, the batch file can run itself at any hour and interval you choose (daily, weekly) without you having to log onto Anaplan or be present.



Anaplan Connect compresses the files during upload. Do not refer to zip files in the .bat or .sh file, this is not supported.

## Prerequisites

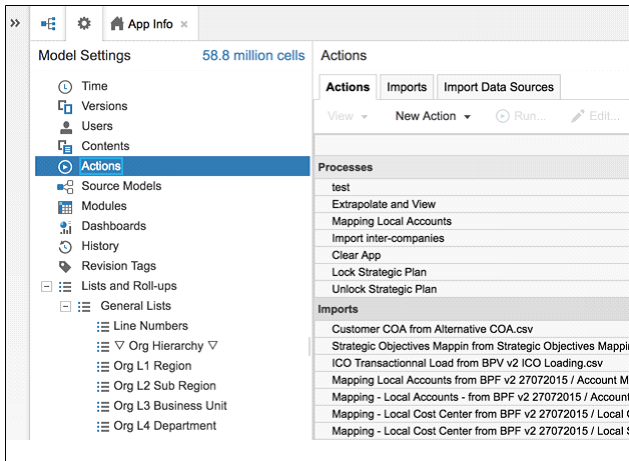
### Firewall and Proxy Access

Whitelist api.anaplan.com in your firewall and any proxies your organization uses and ensure that port 443 is open for two-way HTTPS connections between Anaplan Connect and Anaplan.



## Access to Anaplan model with the actions configured

Open an Anaplan model that already has the [actions](#) (Import, Export, Delete, or Process) that you want Anaplan Connect to run.



If you do not have access to Anaplan, work with someone who has the ability to create actions in Anaplan.

## Java version and third-party data sources

- An installation of Java 8. If you want to use Anaplan Connect to import from an ODBC data source, note that Java 8 does not support the JDBC-ODBC Bridge (see [https://blogs.oracle.com/Lance/entry/removal\\_of\\_the\\_jdbc\\_odbc](https://blogs.oracle.com/Lance/entry/removal_of_the_jdbc_odbc)).
- Anaplan Connect supports Java Database Connectivity (JDBC), which means it is possible to work with many third-party data sources.
  - [JDBC for Oracle, Access, Excel](#)
  - [Import through a JDBC Connection for a Microsoft SQL Server database](#)

## If you're using an SSO-enabled workspace

If the actions you want Anaplan Connect to run are for models in a workspace using single sign-on, we recommend using [Certificate Authority \(CA\) Authentication](#).

If you use Anaplan's Basic authentication, the Anaplan Connect Single Sign-on (SSO) user must be an **Exception User**. An Exception User can authenticate by username and password or by certificate, rather than through SAML.

See: [https://help.anaplan.com/anapedia/Content/Administration\\_and\\_Security/Security/Single\\_Sign-on.html](https://help.anaplan.com/anapedia/Content/Administration_and_Security/Security/Single_Sign-on.html).

## Download and Setup

1. Go to the Downloads page in Anapedia.
2. Expand **Anaplan Connect (API Client)**.
3. Click the Anaplan Connect client version you want and save the zip file to your hard drive.
4. Extract the zip to a directory.



**Note:** If the folder name contains parentheses, an error might occur when using Anaplan Connect. Do not install Anaplan Connect to a folder that has parentheses in its name. For example, Program Files (x86).

## Creating Scripts for Anaplan Connect

Anaplan Connect allows you to write simple scripts that take advantage of the Anaplan API to perform various tasks.

You can use the script below to verify that you are able to create and use new Anaplan Connect jobs. Note that this script uses basic authentication, so you will be prompted for your Anaplan password before the job is run. To follow along with the example, you must first log into Anaplan Connect and create an Import Action.

### Windows

Save and run the following script in the same directory as AnaplanClient.bat. The script is also available in the examples folder at examples\example.bat. The script contains both the user and associated password, but the password is optional. Leaving it off will cause Anaplan Connect to prompt for the password prior to executing the script.

```
@echo off
rem This example loads a source text file and runs an Anaplan import into a module.
rem For details of how to configure this script see doc\Anaplan Connect User Guide.doc
set AnaplanUser="your.email@company.com:password"
set WorkspaceId="My Workspace"
set ModelId="My Model"
set Operation=-file "My Source.txt" -put "C:\My Source.txt" -import "My Module from My Source.txt" -execute
    -output "C:\My Errors.txt"
rem *** End of settings - Do not edit below this line ***
setlocal enableextensions enabledelayedexpansion || exit /b 1
cd %~dp0
if not %AnaplanUser% == "" set Credentials=-user %AnaplanUser%
    set Command=.\AnaplanClient.bat %Credentials% -workspace %WorkspaceId% -model %ModelId% %Operation%
```

```
@echo %Command%
cmd /c %Command%
pause
```

Where:

your.email@company.com:password	your Anaplan login credentials
My Workspace	your workspace ID
My Model	your model ID
My Source.txt	a flat file in your local host
C:\My Source.txt	full path to the flat file in your local host
C:\My Errors.txt	full path to where you want Anaplan Connect to create a dump file in your local host. The dump file contains the records that could not be imported.

## Linux or Mac OS

Save and run the following script in the same directory as AnaplanClient.sh. The script contains both the user and password, but the password is optional. Leaving it off will cause Anaplan Connect to prompt for the password prior to executing the script.

```
#!/bin/sh
#This example uploads a file and runs an import
AnaplanUser="your.email@company.com:password"
WorkspaceId="workspaceid"
ModelId="modelid"
ServiceUrl="https://api.anaplan.com"
AuthUrl="https://auth.anaplan.com"
ImportName="import action name"
FileName="import data source name"
FilePath="import file location"
ChunkSize=1
ErrorDump="error dump location"
Operation="-debug -service ${ServiceUrl} -auth ${AuthUrl} -workspace ${WorkspaceId} -model ${ModelId} -
chunksize ${ChunkSize} -file '${FileName}' -put ${FilePath} -import '${ImportName}' -execute -output
'${ErrorDump}' "
# _____ Do not edit below this line _____
if [ "${AnaplanUser}" ]; then
    Credentials="-user ${AnaplanUser}"
```

```

fi
if [ "${CertPath}" ]; then
    #Credentials="-keystore ${KeyStorePath} -keystorepass ${KeyStorePass} -keystorealias ${KeyStoreAlias}"
    Credentials="-certificate ${CertPath} -keystore ${KeyStorePath} -keystorepass ${KeyStorePass} -keystorealias
${KeyStoreAlias}"    # THIS IS ANOTHER APPROACH OF PROVIDING THE RAW CERTIFICATE VIA -certificate
    # THIS IS ANOTHER APPROACH OF PROVIDING THE RAW CERTIFICATE VIA -certificate
fi
echo cd "`dirname "$0`"
cd "`dirname "$0`"
if [ ! -f AnaplanClient.sh ]; then
    echo "Please ensure this script is in the same directory as AnaplanClient.sh." >&2
    exit 1
elif [ ! -x AnaplanClient.sh ]; then
    echo "Please ensure you have executable permissions on AnaplanClient.sh." >&2
    exit 1
fi
Command="./AnaplanClient.sh ${Credentials} ${Operation} "
/bin/echo "${Command}"
exec /bin/sh -c "${Command}"

```

**Where:**

your.email@company.com:password	your Anaplan login credentials
WorkspaceID	your workspace ID
ModelID	your model ID
import action name	name of the import Action you created
import data source name	a flat file in your local host
import file location	full path to the flat file in your local host
error dump location	full path to where you want Anaplan Connect to create a dump file in your local host. The dump file contains the records that could not be imported.

## Configure Your Scripts

Every script contains the following information:

- User credentials or certificate information.
- Workspace ID - Unique and will not change
- Model ID - Unique to each model and will not change
- Action from Anaplan, such as a specific Import or Export

When running a script at an interactive terminal, the user is prompted for the password if it is not included in the script.

Jobs can take longer than the 30 minutes allocated to an Auth token, Anaplan Connect allows calls to be made to the API after this expiry limit without re-entering the authentication details.



**Warning:** A script that runs without user interaction must contain the credentials. Take measures to secure the file, machine, and account.

### Locate the Workspace ID and Model ID

1. Log in to Anaplan.
2. Open the model you want to use.
3. In the upper-right corner, click **Help > About**. The **About** dialog displays the values of the workspace and model IDs.
4. Copy the workspace ID to the line of your batch file that begins with *set WorkspaceId=*.
5. Copy the model ID to the line of your batch file that begins with *set ModelId=*.

### Locate the Actions for Anaplan Connect to Perform

1. Open the Anaplan model that has the actions you want Anaplan Connect to perform.
2. In **Model Settings > Actions**, note the exact names of the actions, including capitalization and file extensions. For additional help, read the [Anapedia articles](#).

## Certificate Authentication


Starting with Anaplan Connect 1.4, Certificate Authority (CA) authentication lets you use certificates from a supported root CA, or Intermediate Certificate ending in a supported root CA. Use your certificate for CA Certificate based authentication with Anaplan APIs and Anaplan Connect. For more information, see [Administration: Certificates](#) in Anapedia.

Storing sensitive pieces of information like your certificate private keys in the filesystem can be insecure. It's good practice to use a Java KeyStore (JKS) to protect the private key and certificate with a KeyStore password. Anaplan Connect can work with such KeyStores if they have been created for Anaplan Connect to consume.



**Note:** You must register your Public Certificate in Anaplan before using these certificates in integrations. For more information, see [Manage your Certificates](#) in Anapedia.

You need the following command-line tools for this procedure:

Tool	Location
openssl	<a href="https://www.openssl.org/source/">https://www.openssl.org/source/</a>  <b>Note:</b> This link takes you outside of Anaplan to download openssl. For more information on openssl usage examples, review articles on Anaplan Community. Anaplan does not support openssl and does not assume any responsibility for issues arising out of downloading and using openssl.
keytool	keytool comes bundled with your JAVA distribution

When you obtain a certificate from your CA (Certificate Authority), the certificate is usually issued as two files: a Public Certificate (Public Cert) and a Private Key. The Public Cert and Private Key may also be issued in a single file by your CA. Contact your CA or internal IT team for details and for information on the process to obtain a certificate.

1. If you obtain both the Public Cert and the Private Key in a single file, use openssl to extract and save both files separately in PEM format.

In the following example, a single PKCS12 formatted file was issued containing both Public Cert and Private Key.

To extract a Public Cert:

```
openssl pkcs12 -in Client_certificate.p12 -nokeys -out CERTIFICATE.pem
```

To extract a Private Key:

```
openssl pkcs12 -in Client_certificate.p12 -nocerts -out PRIVATE_
KEY.pem -nodes
```

When you extract the Private Key with this command, you're prompted to create a passphrase. Record your passphrase in a safe place, as it is needed if you use the Private Key for your authentication.



**Note:** The exact command varies depending on the type and format of your certificate. Refer to the openssl documentation for more details and compare against the file type you receive.

2. Your Tenant Administrator must then register the modified Public Cert in Anaplan. This step is essential to using the certificate in integrations.
3. Create your authentication method. You can either use a Private Key or [create a Java KeyStore](#).

## Option 1: Use a Private Key with Anaplan Connect

Use your Private Key with Anaplan Connect by providing to the *-privateKey* argument with your passphrase.

Depending on how your private key was created, it may be encrypted with a password. Encrypted keys will prompt for a password when used, so the password must be included in your Anaplan Connect scripts.

- Encrypted Key: Set the password at the end of the private key's file path. The script below uses the 'Passphrase' parameter to obtain the password and then adds it to the end of the private key's ('PrivateKey') file path.
- Unencrypted Key: There is no password to include with the key, but you must keep the colon ':' delimiter at the end of the private key's file path. To use the example scrip below, leave the 'Passphrase' field empty.

### Example Run script

```
#!/bin/sh
This example uploads a file and runs an import
WorkspaceId="<workspace ID>"
ModelId="<model ID>"
PrivateKey="<path/to/privatekey.pem>"
Passphrase="<passphrase>"
FilePath="<path/for/file import>"
Certificate="<path/to/certificate>"
Operation="-debug -service 'https://api.anaplan.com' -auth 'https://auth.anaplan.com' -workspace ${WorkspaceId}
-model ${ModelId} -chunksize 1 -file 'Employee Planning.csv' -put ${FilePath} -import 'Employee Planning from
Employee Planning.csv' -execute -output 'p2-dump/Employee Planning from Employee Planning.csv' "
```

```
# _____ Do not edit below this line _____
Credentials="-certificate ${Certificate} -privatekey ${PrivateKey}:${Passphrase}"
echo cd "dirname "$0""
cd "dirname "$0""
if [ ! -f AnaplanClient.sh ]; then
echo "Please ensure this script is in the same directory as AnaplanClient.sh." >&2
exit 1
elif [ ! -x AnaplanClient.sh ]; then
echo "Please ensure you have executable permissions on AnaplanClient.sh." >&2
exit 1
fi
Command="./AnaplanClient.sh ${Credentials} ${Operation} "
/bin/echo "${Command}"
exec /bin/sh -c "${Command}"
```

## Option 2: Create a Java KeyStore



For a video example of creating a Java KeyStore, see:

<https://community.anaplan.com/t5/Videos/Certificate-Authentication-Process/ba-p/36468>

1. Create a PKCS12 bundle called "*keystore bundle.p12*" from the Private-Key and the CA Certificate.

Make sure you use a suitable keystore alias to uniquely identify the entry as this name is required for the *keystorealias* argument when you run Anaplan Connect.

```
$ openssl pkcs12 -export -in <CERTIFICATE.pem> -inkey <PRIVATE_
KEY.pem> -out keystore_bundle.p12 -name
<KEYSTORE_ALIAS> -CAfile <CERTIFICATE.pem> -caname root
```

You are prompted for your Keystore password. You will use the same password for creating a Java keystore in the next step.

2. Use the PKCS12 bundle to create the JKS keystore called "*my\_keystore.jks*".

```
$ keytool -importkeystore -deststorepass <KEYSTORE-PASSWORD> -
destkeystore my_keystore.jks
-srckeystore keystore_bundle.p12 -srcstoretype PKCS12
```

You are prompted for your Keystore password. Use the same password that was used to create the pkcs12 bundle in the previous step. The *.jks* file contains your KeyStore that securely holds the **Private-Key** and the **CA Certificate**.



## KeyStore Wizard for Anaplan Connect 1.4

Alternatively, you can use the KeyStore Windows tool in Windows to create a Java Keystore:

<https://community.anaplan.com/t5/Knowledge/KeyStore-Wizard-for-Anaplan-Connect-1-4/ta-p/38831#U38831>



Note: The KeyStore Wizard tool is not supported by Anaplan. Anaplan does not assume any responsibility for issues arising out its download and use.

## Use Keystore with Anaplan Connect

Use the Keystore with Anaplan Connect by providing to the *-keystore*, *-keystorepass* and *-keystorealias* arguments with values used when building the Keystore.

### Example Run script

```
#!/bin/sh
# This example runs a Keystore with Anaplan Connect
CACertPath="/path/to/CA.crt"
KeyStorePath="/path/to/keystore.jks"
KeyStorePass=""
KeyStoreAlias=""
WorkspaceId=""
Operation="-debug -service 'https://api.anaplan.com' -auth 'https://auth.anaplan.com' -w ${WorkspaceId} -M"
# _____ Do not edit below this line _____
if [ "${CACertPath}" ]; then
    Credentials="-keystore ${KeyStorePath} -keystorepass ${KeyStorePass} -keystorealias ${KeyStoreAlias}"
    #Credentials="-certificate ${CACertPath} -keystore ${KeyStorePath} -keystorepass ${KeyStorePass}
    -keystorealias ${KeyStoreAlias}"    # THIS IS ANOTHER APPROACH OF PROVIDING THE RAW CERTIFICATE VIA -
certificate
fi
echo cd "`dirname "$0"`"
cd "`dirname "$0"`"
if [ ! -f AnaplanClient.sh ]; then
    echo "Please ensure this script is in the same directory as AnaplanClient.sh." >&2
    exit 1
elif [ ! -x AnaplanClient.sh ]; then
    echo "Please ensure you have executable permissions on AnaplanClient.sh." >&2
    exit 1
fi
Command="./AnaplanClient.sh ${Credentials} ${Operation}"
/bin/echo "${Command}"
exec /bin/sh -c "${Command}"
```

## Upload and Download Files

Files are uploaded to a location on a customer-hosted machine, where the import script can access them before they are imported into Anaplan.

The `-chunksize` parameter allows you to configure the upload chunk size parameter between 1 and 50MB to accommodate large file uploads.

### Example script for upload

#### Linux or Mac OS:

```
#!/bin/sh
#This example uploads a file and runs an import
AnaplanUser="user@anaplan.com"
AnaplanPassword="Password"
set WorkspaceId="8a1234567897c12b014bf01234567890"
set ModelId="CD1234D60CA84E9A123C1C5D061C1234"
Operation="-debug -service 'https://api.anaplan.com' -auth 'https://auth.anaplan.com' -file 'file_to_
upload.csv' -chunksize 1 -put 'file_to_upload.csv' -output 'errors.txt'"
# _____ Do not edit below this line _____
if [ "${AnaplanUser}" ]; then
    Credentials="-user ${AnaplanUser}:${AnaplanPassword}"
fi
echo cd "`dirname "$0"`"
cd "`dirname "$0"`"
if [ ! -f AnaplanClient.sh ]; then
    echo "Please ensure this script is in the same directory as AnaplanClient.sh." >&2
    exit 1
elif [ ! -x AnaplanClient.sh ]; then
    echo "Please ensure you have executable permissions on AnaplanClient.sh." >&2
    exit 1
fi
Command="./AnaplanClient.sh ${Credentials} -workspace ${WorkspaceId} -model ${ModelId} ${Operation}"
/bin/echo "${Command}"
exec /bin/sh -c "${Command}"
```

## Create an Import Script

### Example script for Import

#### Import (basic authentication)

```
@echo off

rem This example loads a source text file and runs an Anaplan import into a module.
rem For details of how to configure this script see doc\Anaplan Connect User Guide.doc
set AnaplanUser=anaplan.user@anaplan.com:Password
set WorkspaceId="8a1234567897c12b014bf01234567890"
set ModelId="CD1234D60CA84E9A123C1C5D061C1234"
set Operation=-file "Employee.txt" -put "C:\AnaplanConnect\Import\Employee.txt"
-import "New Hire from Employee.txt" -execute -output "C:\My Errors.txt"
    rem *** End of settings - Do not edit below this line ***
setlocal enableextensions enabledelayedexpansion || exit /b 1
cd %~dp0

if not %AnaplanUser% == "" set Credentials=-user %AnaplanUser%
set Command=.\AnaplanClient.bat %Credentials% -workspace %WorkspaceId% -model %ModelId% %Operation%
@echo %Command%
cmd /c %Command%
pause
```

#### Import (certificate authorization)

```
@echo off

rem This example loads a source text file and runs an Anaplan import into a module.
rem For details of how to configure this script see doc\Anaplan Connect User Guide.doc
set CertPath="C:\certs\cert.pem"
set KeyStorePath="C:\certs\AC1.4_keystore.jks"
set KeyStorePass="keystorepass"
set KeyStoreAlias="keystorealias"
set WorkspaceId="8a1234567897c12b014bf01234567890"
set ModelId="CD1234D60CA84E9A123C1C5D061C1234"
set Operation=-file "Employee.txt" -put "C:\AnaplanConnect\Import\Employee.txt"
-import "New Hire from Employee.txt" -execute -output "C:\My Errors.txt"
    rem *** End of settings - Do not edit below this line ***
setlocal enableextensions enabledelayedexpansion || exit /b 1
cd %~dp0

set Credentials=-certificate %CertPath% -keystore %KeyStorePath% -keystorepass %KeyStorePass% -keystorealias
```

```
%KeyStoreAlias%
set Command=.\AnaplanClient.bat %Credentials% -workspace %WorkspaceId% -model %ModelId% %Operation% @echo
%Command%
cmd /c %Command%
pause
```

## Set the Import Operation

As a best practice, the name of the Import action should indicate the name of the file (or other source) from which data will be imported, such as *Import From Employee.txt*.

Example:

```
set Operation=-file "Employee.txt" -put
"C:\AnaplanConnect\Import\Employee.txt"
-import "New Hire from Employee.txt" -execute -output
"C:\ImportDumpFilesDirectory"
```

where:

-file "Employee.txt"	indicates the action uses a file named Employee.txt. Note that .csv format is also supported.
-put "C:\AnaplanConnect\Import\Employee.txt"	upload the file to the specified absolute or relative path to the Anaplan Server.
-import "New Hire from Employee.txt"	an Import action with the specified name. To see this name in Anaplan, in <b>Settings</b> click <b>Actions</b> and view the list of Imports. As a best practice, name your import (or export) action such that it matches the name of the file.
-execute	runs the action
-output "C:\ImportDumpFilesDirectory"	generates a file at the specified directory that lists any Import errors. This is optional. This file is created only if at least one Import error occurs.

## Linux and Mac OS example for Import

In Linux or Mac OS, use single-quotes instead of double quotes. In this example, compare the double-quotes of Windows with the single-quotes of Linux and Mac OS.

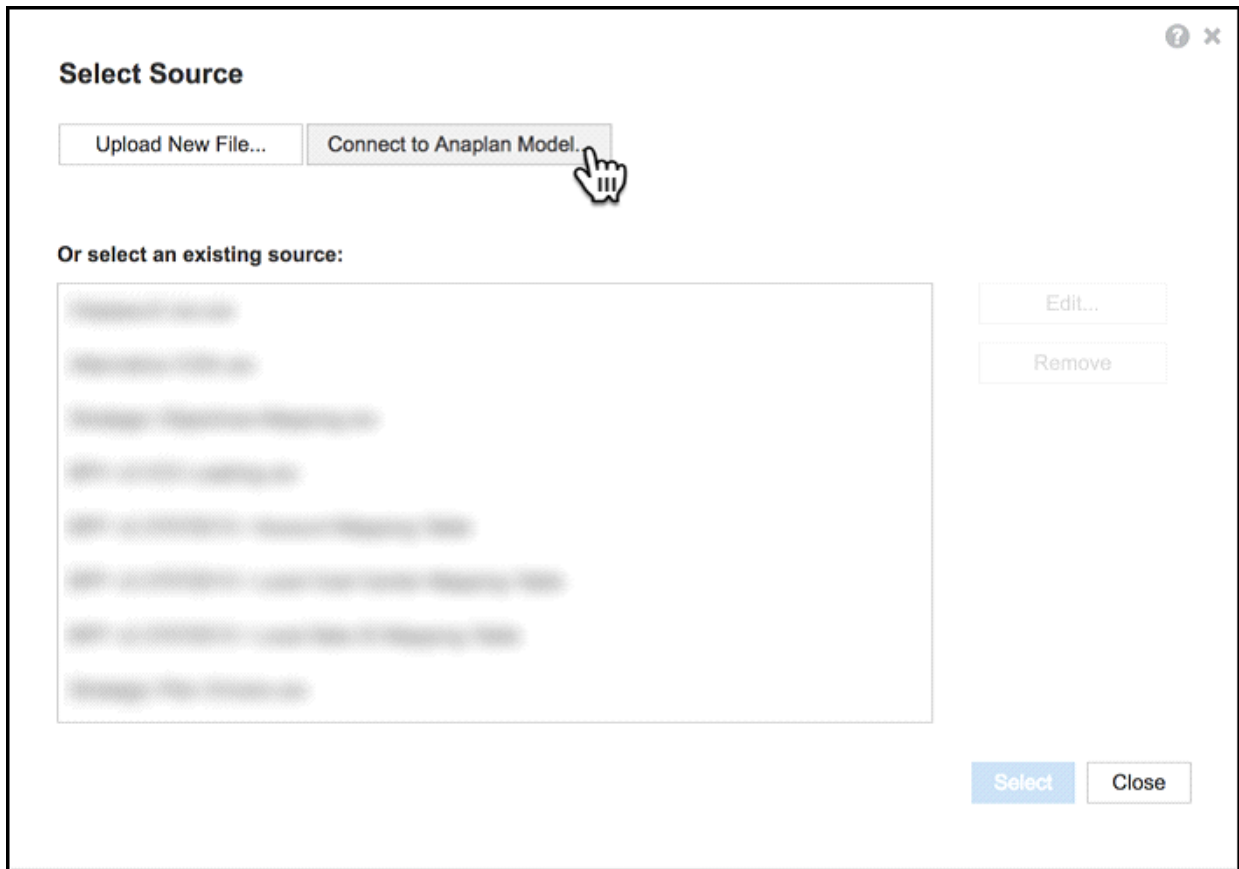
Windows	<pre>-put "C:\testdata\Europe P&amp;L.txt" or: -p "C:\testdata\Europe P&amp;L.txt"</pre>
Linux or Mac OS	<pre>-put '/Users/user1/testdata/Europe P&amp;L.txt' or: -p '/Users/user1/testdata/Europe P&amp;L.txt'</pre>

For Linux and Mac OS examples of import scripts, see [Appendix G](#).

## Model-to-model Import

This example runs a model-to-model import within Anaplan, transferring data from the **Installation Sales** module in *Model2* to the **P&L** module in *MyBudgetModel*.

1. Run the import manually. On the **Data** menu, click **Import** then click **Connect to Anaplan Model**.



2. Select a module (or list) as the source.
3. Click **Run Import** then edit and run the batch file.

In the model, note the **Import ID** that is used in the batch file, which in the example below is *P&L from Model2 / Installation Sales*.

There is a space before and after the forward slash "/" in the string 'P&L from Model2 / Installation Sales'.

```
@echo off
rem This example runs a model to model import within Anaplan.
set AnaplanUser="firstname.lastname@company.com"
set WorkspaceId="8a819488459fa63301462b73fe785786"
set ModelId="CB0A5A4D5C5943B5837FF42C5FAA95E1"
set Operation=-import "P&L from Model2 / Installation Sales" -execute
rem *** End of settings - Do not edit below this line ***
```

## Create an Export Script

### Example Batch file for Export

#### Export (basic authentication)

```
@echo off
set AnaplanUser="Anaplan.User@anaplan.com:Password"
set WorkspaceId="8a1234567897c12b014bf01234567890"
set ModelId="CD1234D60CA84E9A123C1C5D061C1234"
set Operation=-export "Employee by Department.xls" -execute -get "C:\Employee.xls"
rem *** End of settings - Do not edit below this line ***
setlocal enableextensions enabledelayedexpansion || exit /b 1
cd %~dp0
if not %AnaplanUser% == "" set Credentials=-user %AnaplanUser%
set Command=.\AnaplanClient.bat %Credentials% -workspace %WorkspaceId% -model%ModelId% %Operation%
@echo %Command%
cmd /c %Command%
pause
```

#### Export (certificate authentication)

```
@echo off
set CertPath="C:\certs\cert.pem"
set KeyStorePath="C:\certs\AC1.4_keystore.jks"
set KeyStorePass="keystorepass"
set KeyStoreAlias="keystorealias"
set WorkspaceId="8a1234567897c12b014bf01234567890"
set ModelId="CD1234D60CA84E9A123C1C5D061C1234"
set Operation=-export "Employee by Department.xls" -execute -get "C:\Employee.xls"
rem *** End of settings - Do not edit below this line ***
setlocal enableextensions enabledelayedexpansion || exit /b 1
cd %~dp0
set Credentials=-certificate %CertPath% -keystore %KeyStorePath% -keystorepass %KeyStorePass% -keystorealias
%KeyStoreAlias%
set Command=.\AnaplanClient.bat %Credentials% -workspace %WorkspaceId% -model %ModelId% %Operation% @echo
%Command%
cmd /c %Command%
pause
```



## Set the Export Operation

Example:

```
set Operation=-export "Employee by Department.xls" -execute -get  
"C:\Employee.xls"
```

Where:

-export "Employee by Department.xls"	indicates that an Export action exists and is named "Employee by Department.xls"
-execute	runs the Export
-get "C:\Employee.xls"	creates a new file with the exported data at the specified path

An Export action cannot generate an error file, so we do not specify a path for it.

For Linux and Mac OS examples of export scripts, see [Appendix G](#).

## Create a Script to Run Other Actions

### Example Batch file for Delete

#### Basic Authentication

```
@echo off
rem This example deletes obsolete customers from a list
set AnaplanUser=firstname.lastname@company.com
set WorkspaceId="8a1234567897c12b014bf01234567890"
set ModelId="CB0A5A4D5C5943B5837FF42C5FAA95E1"
set Operation=-action "Delete from Customers Using Obsolete" -execute
rem *** End of settings - Do not edit below this line ***
setlocal enableextensions enabledelayedexpansion || exit /b 1
cd %~dp0
if not %AnaplanUser% == "" set Credentials=-user %AnaplanUser%
set Command=.\AnaplanClient.bat %Credentials% -workspace %WorkspaceId% -model %ModelId% %Operation%
@echo %Command%
cmd /c %Command%
pause
```

#### Certificate Authentication

```
@echo off
rem This example deletes obsolete customers from a list
set CertPath="C:\certs\cert.pem"
set KeyStorePath="C:\certs\AC1.4_keystore.jks"
set KeyStorePass="keystorepass"
set KeyStoreAlias="keystorealias"
set WorkspaceId="8a1234567897c12b014bf01234567890"
set ModelId="CB0A5A4D5C5943B5837FF42C5FAA95E1"
set Operation=-action "Delete from Customers Using Obsolete" -execute
rem *** End of settings - Do not edit below this line ***
setlocal enableextensions enabledelayedexpansion || exit /b 1
cd %~dp0
set Credentials=-certificate %CertPath% -keystore %KeyStorePath% -keystorepass %KeyStorePass% -keystorealias
%KeyStoreAlias%
set Command=.\AnaplanClient.bat %Credentials% -workspace %WorkspaceId% -model %ModelId% %Operation%
@echo %Command%
```

```
cmd /c %Command%  
pause
```

## Set the Delete operation to delete items from a list

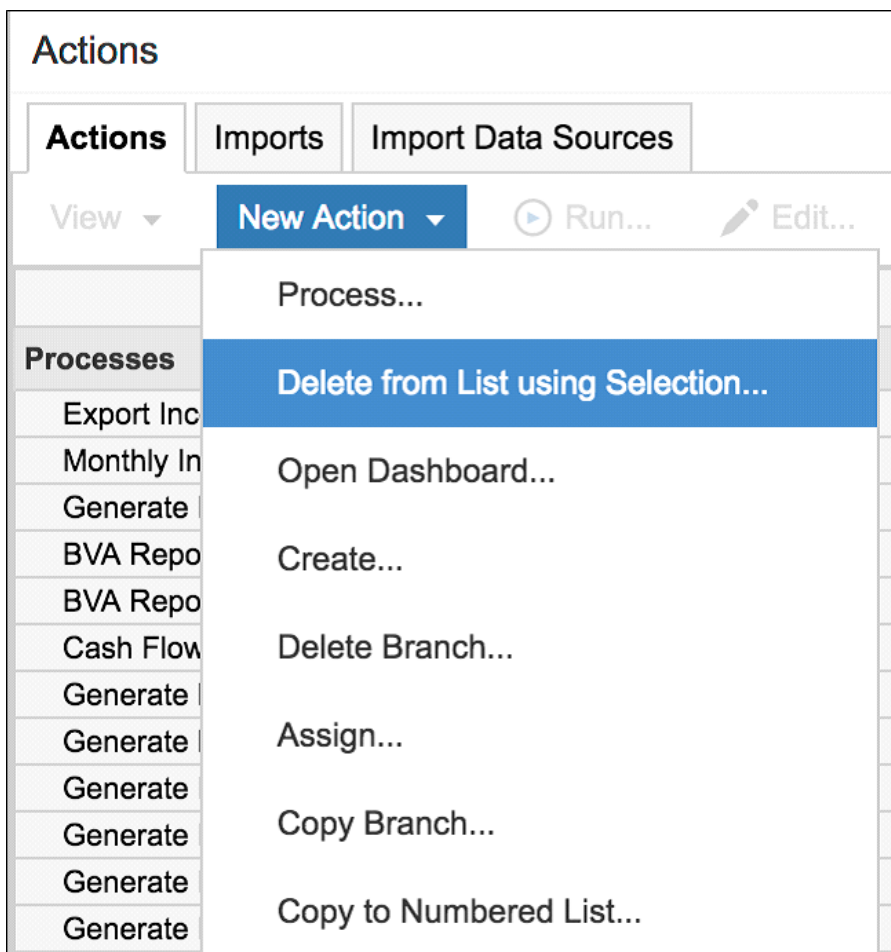
This example shows how to automate deleting items from a list based on Boolean criteria.

For example, you can automatically delete items in a list that are now obsolete, such as customers with a rating less than, or equal to, 2. The Obsolete line item has Boolean data type and must be set up to be a formula:

```
Obsolete = Rating <= 2
```

Line items of Boolean data type that only have the dimensionality of the list can be used as the criteria to determine which items to delete.

1. In Anaplan, go to **Model Settings > Actions**.
2. On the **New Action** list, click **Delete from List using Selection**.



The Delete from list using Selection dialog appears.

3. In the **Action Name** box, type the text that you want to appear on the button.
4. On the **Delete Items from** list, select the list (for example *Customers*) from which you are deleting items.
5. On the **Selected using** list, select the line item that contains the selection criteria (for example *Customer Rating.Obsolete*).
6. Click **OK**. The action appears under **Other Actions**. Use the name of this action in your batch script.

See [Delete from List using Selection](#) in [Anapedia](#).

Example:

```
set Operation=-action "Delete from Customers Using Obsolete" -execute
```

where:

-action "Delete from Customers Using Obsolete"	an Other Action (neither Import nor Export) named Delete from Customers Using Obsolete
-execute	runs the Delete

For Linux and Mac OS examples of delete scripts, review [Appendix G](#).

## Create a Script to run a Process

A Process is a combination of Imports, Exports, and/or Deletes.

The process must exist within Anaplan before calling it in the Anaplan Connect script.

An example batch file for a process that contains Import and Export actions shown below . Note that the process can also contain Delete actions:

### Basic Authentication

```
@echo off

rem This example runs a Process that contains multiple Export actions
set AnaplanUser="firstname.lastname@company.com"
set WorkspaceId="8a1234567897c12b014bf01234567890"
set ModelId="CB0A5A4D5C5943B5837FF42C5FAA95E1"
set Operation= -file "file1.txt" -put"C:\Files\ImportModule.csv" -file "file2.txt" -put "C:\Files\example.csv"
-process "myprocess" -execute -file "ExportList" -get "C:\Files\ExportList.csv" -file "ExportModule"
-get "C:\Files\ExportModule.csv" -output "C:\MyDirectoryForImportDumpFiles"
rem *** End of settings -Do not edit below this line ***
setlocal enableextensions enabledelayedexpansion || exit /b 1
cd %~dp0

if not %AnaplanUser% == "" set Credentials=-user %AnaplanUser%
set Command=.\AnaplanClient.bat %Credentials% -workspace %WorkspaceId% -model %ModelId% %Operation%
@echo %Command%
cmd /c %Command%
pause
```

### Certificate Authentication

```
@echo off

rem This example runs a Process that contains multiple Export actions
set CertPath="C:\certs\cert.pem"
set KeyStorePath="C:\certs\AC1.4_keystore.jks"
set KeyStorePass="keystorepass"
set KeyStoreAlias="keystorealias"
set WorkspaceId="8a1234567897c12b014bf01234567890"
set ModelId="CB0A5A4D5C5943B5837FF42C5FAA95E1"
set Operation= -file "file1.txt" -put"C:\Files\ImportModule.csv" -file "file2.txt" -put "C:\Files\example.csv"
-process "myprocess" -execute -file "ExportList" -get "C:\Files\ExportList.csv" -file "ExportModule"
-get "C:\Files\ExportModule.csv" -output "C:\MyDirectoryForImportDumpFiles"
rem *** End of settings -Do not edit below this line ***
```

```
setlocal enableextensions enabledelayedexpansion || exit /b 1
cd %~dp0
set Credentials=-certificate %CertPath% -keystore %KeyStorePath% -keystorepass %KeyStorePass% -keystorealias %KeyStoreAlias%
set Command=.\AnaplanClient.bat %Credentials% -workspace %WorkspaceId% -model %ModelId% %Operation%
@echo %Command%
cmd /c %Command%
pause
```

## Set the Process Operation

```
set Operation=-file "file1.csv" -put "C:\Files\ImportModule.csv" -file "file2.csv" -put "C:\Files\example.csv"
-process "myprocess" -execute -file "ExportList" -get "C:\Files\ExportList.csv"
-file "ExportModule" -get "C:\Files\ExportModule.csv" -output "C:\MyDirectoryForImportDumpFiles"
```

Where:

-file "file1.csv" -put "C:\Files\ImportModule.csv"	Uploads the local file <i>C:\Files\ImportModule.csv</i> to the Anaplan server so that its data can be stored into the Import data source named <i>file1.csv</i> .
-file "file2.csv" -put "C:\Files\ImportModule.csv"	Uploads the local file <i>C:\Files\ImportModule.csv</i> to the Anaplan server so that its data can be stored into the Import data source named <i>file2.csv</i> .
-process "myprocess" -execute	Runs the process named <i>myprocess</i>
-file "ExportList" -get "C:\Files\ExportList.csv"	Downloads the data last exported by the export <i>ExportList</i> to the local file <i>C:\Files\ExportList.csv</i>
-file "ExportModule" -get "C:\Files\ExportModule.csv"	Downloads the data last exported by the export <i>ExportModule</i> to the local file <i>export/ProcessExportModule.csv</i>
-output "C:\MyDirectoryForImportDumpFiles"	Generates a file for each import action within the specified directory that lists one or more import errors

For Linux and Mac OS examples of process scripts, review [Appendix G](#).

## End Users versus Workspace Administrators

An end user can run the same actions through Anaplan Connect that the end user can run manually.

	End user can run..	Workspace Admin can create and run..
<b>Import</b>	<ul style="list-style-type: none"> <li>model-to-model import</li> <li>list imports - requires write access to the target list</li> <li>module imports - requires write access to the target module</li> </ul>	any type of import, including imports that involve uploading external files or data
<b>Export</b>	Requires read access to the module or list.	export
<b>Delete</b>	Requires write access to the list.	delete
<b>Process</b>	Requires access to the actions in the process	process
<b>Info</b>		<ul style="list-style-type: none"> <li>Can change the <b>model</b>, unless the role is <i>No Access</i> to a particular model, which also prevents the Workspace Admin from finding the model.</li> <li>Can have a role that has access to no <b>module</b> but can grant self rights to the module.</li> </ul>

## Scheduling an import or export

A batch file that runs the import or export can be scheduled to run at a specific time, as a one-time operation, or recurring at the interval you choose, such as daily, weekly, or monthly. The scheduler is not part of Anaplan Connect, and the scheduling program and set-up depends on your operating system; the computer must be running at the scheduled time.

In the batch file, the password needs to be appended to the Anaplan user name and enclosed in double quotes. Alternatively use certificate authentication.

```
set AnaplanUser=firstname.lastname@company.com:"mysecretpassword"
```

## Windows

Optionally, you can remove the pause command at the end of the batch file.

The pause command leaves the messages on the screen that record what the batch file has done.

### Scheduler for Windows XP

This example shows the steps involved on a Windows XP operating system to schedule an import on a specific day and time, once a month:

- Start > All Programs > Accessories > System Tools > Scheduled Tasks > Add Scheduled Tasks > Next > Browse

`C:\anaplan-connect-1-4\nameofscript.bat`

- Monthly > Next > The First Monday at 05.00 > Enter name & password for the PC > **Finish**

### Scheduler for Windows 7

The Scheduler in Windows 7 is almost the same as XP:

- Start > All Programs > Accessories > System Tools > Task Scheduler > Create Basic Task > *Name the task* > Next > *Set when to trigger the task* > Next > Select Start a program and browse to `C:\anaplan-connect\nameofscript.batt` > Next > **Finish**

### Linux or Mac OS

Consider using a job scheduling utility for UNIX-like operating systems, such as [cron](#).




## Log Files in Anaplan Connect

Logging files generated by Anaplan Connect in v1.4 and later use logback to provide file output.

The log line format is:

YYYY-MM-DD hh:mm:ss <Class Path> <PID> |-- <Logging statement description>

Where:

Element	Description
YYYY	Year in four digit format.
MM	Month in two digit format
DD	Day of the month in two digit format
hh	Hour in 24-hour format
mm	Minutes
ss	Seconds
<Class Path>	The shortened class path. For example: DEBUG [c.a.client.Program :1594 ] or INFO [a.BasicAuthenticator:26 ]
<PID>	The UNIX process ID.  <b>Note:</b> On Windows systems, this entry may be blank.
--	A delimiter between the basic logging information and the logging statement description.
<Logging statement description>	A descriptive logging statement.

Example:

```
2018-05-06 20:30:18 DEBUG [c.a.client.Program :1595 ] 96461 |-- Anaplan
Connect 2.0.0-release
2018-05-06 20:30:18 DEBUG [c.a.client.Program :1596 ] 96461 |-- Java
HotSpot(TM) 64-Bit Server VM (Oracle Corporation)/ (25.60-b23)/
2018-05-06 20:30:18 DEBUG [c.a.client.Program :1598 ] 96461 |-- (Mac OS
```

```
Xx86_64)/10.13.4
2018-05-06 20:30:18 INFO [c.a.client.Service :88 ] 96461 |--
Initializing Service...
2018-05-06 20:30:18 INFO [a.BasicAuthenticator:26 ] 96461 |--
Authenticating via Basic...
2018-05-06 20:30:21 INFO [c.a.c.ServerFile :259 ] 96461 |--
Uploading file: /Users/USERX/Downloads/gross_sales_actuals.csv
2018-05-06 20:30:33 DEBUG [c.a.c.ServerFile :306 ] 96461 |--
Uploaded chunk: 0 (size=30MB)

2018-05-06 20:31:59 INFO [c.a.client.Program :464 ] 96461 |-- The
file "/Users/USERX/Downloads/gross_sales_actuals.csv"
has been uploaded as gross_sales_actuals_DEC15.csv.
2018-05-06 20:32:00 INFO [c.a.c.TaskFactory :116 ] 96461 |--
Creating Import task: 112000000030
2018-05-06 20:32:02 INFO [c.a.client.Task :207 ] 96461 |-- Run
status: Retrieving data from gross_sales_actuals_DEC15.csv
2018-05-06 20:32:36 INFO [c.a.client.Task :207 ] 96461 |-- Run
status: Generating failure dump (100.0%)
2018-05-06 20:32:46 INFO [c.a.client.Task :207 ] 96461 |-- Run
status: Complete. (100.0%)

2018-05-06 20:32:46 INFO [c.a.client.Task :230 ] 96461 |-- The
operation was successful.
2018-05-06 20:32:46 INFO [c.a.client.Task :3880 ] 96461 |-- large_
list_USERX: 2 (0/2) rows successful, 1179070 ignored

2018-05-06 20:32:46 INFO [c.a.c.ServerFile :109 ] 96461 |--
Downloading file /Users/USERX/projects/anaplan-connect/errors.txt
2018-05-06 20:32:46 DEBUG [c.a.c.TaskResult :127 ] 96461 |--
```

Fetching Import action's dump file chunks for

task=A96ADE416B594080BD8E7F7FB25BA51B

2018-05-06 20:32:47 DEBUG [c.a.c.TaskResult :138 ] 96461 |--

Downloading dump data-chunk 0

2018-05-06 20:32:57 INFO [c.a.client.Program :714 ] 96461 |-- Dump  
file written to "errors.txt"

## Troubleshooting Tips

### Getting Debug Information

To get verbose command-line output that might be useful for debugging, include the **-debug** argument at the beginning of the Operation statement. If your script fails to run, enable debug logging and save the output to a text file. If you raise a Support case for assistance, providing the output file of your debug logging will aid the Support team in helping to resolve the problem.

```
set Operation="-debug -file 'file-to-import.csv' -put '/path/to/anaplan-connect/file-to-import.csv'
-import 'Organization from Salesforce' -execute -output 'MyImportErrors.txt'"
```

### Symptoms and Remedies

Symptom	Remedy
Error message: <i>“.\AnaplanClient.bat is not recognized as an internal or external command, operable program or batch file.”</i>	Move the .bat file to the root of your Anaplan Connect installation. This location guarantees that Anaplan Connect can use any batch file you create.

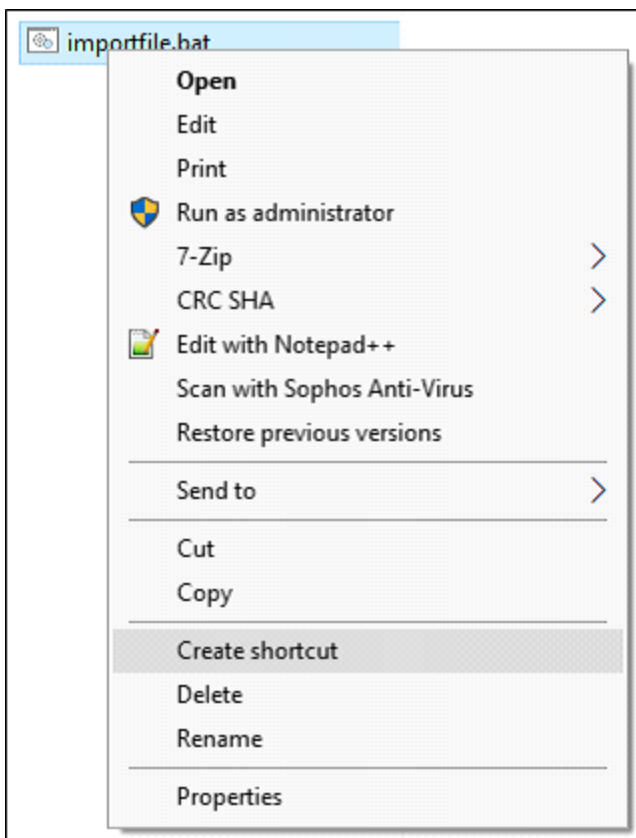
Symptom	Remedy
The batch file appears to run, but numbers do not appear to come through into Anaplan	<ul style="list-style-type: none"> <li>Try changing page, refreshing the browser, or closing and re-opening the target module. The target module might have already been open when you ran the batch file, in which case it would need some event to trigger recontacting the Anaplan server, which refreshes the view with the latest data.</li> <li>Check syntax details. For example: <ul style="list-style-type: none"> <li>variables such as the file name are enclosed in straight double quotes " " (as typed in Notepad), not curly double quotes “ ” (as typed in MS Word).</li> <li>A percent sign (%) anywhere in a batch file (such as in a file or import name) probably needs an escape character preceding it.</li> <li>A leading dollar sign (\$) in a shell script requires a preceding escape character unless it is inside single quotes.</li> <li>These characters require an preceding escape character: <ul style="list-style-type: none"> <li>a single quote (')</li> <li>A single quote around a word containing an apostrophe ('Jane's')</li> <li>double-quote ("Jane")</li> <li>backtick \</li> <li>backquote \</li> <li>accent grave (`).</li> </ul> </li> </ul> </li> <li>A common problem for .sh files is not having execute permissions on the file you want to copy. You can grant execution permission with the command <code>chmod +x</code></li> </ul>

Symptom	Remedy
	filename.sh
Model-to-model import not running or not recognized.	Make sure there is a space before and after the / in the syntax - import “ <i>Target Module from Source Model / Source Module</i> ”
If you’re unable to perform a Delete action on items from a list	<p>Check that the list does not contain summary items or subtotals. Such lists cannot use the Delete action (due to the difficulty of dealing with <i>orphaned</i> subtotals that lack children).</p> <p>Lists that have parent hierarchies or top-level items can use the bulk delete action, provided that the list that you are editing does not have subtotals.</p>
If you’re performing a SQL query from a Windows machine with the -jdbc.query option, and using the percent character (%) as the wildcard character in a pattern for the like operator	<p>The Windows command processor might perform variable substitution on an expression like '%a%', even though no variable a has been defined, resulting in an empty pattern.</p> <p>If so, escape the % sign with %%. For example, %a% is escaped by %%a%%</p>

## Appendix A: Network Drive as Location for Anaplan Connect

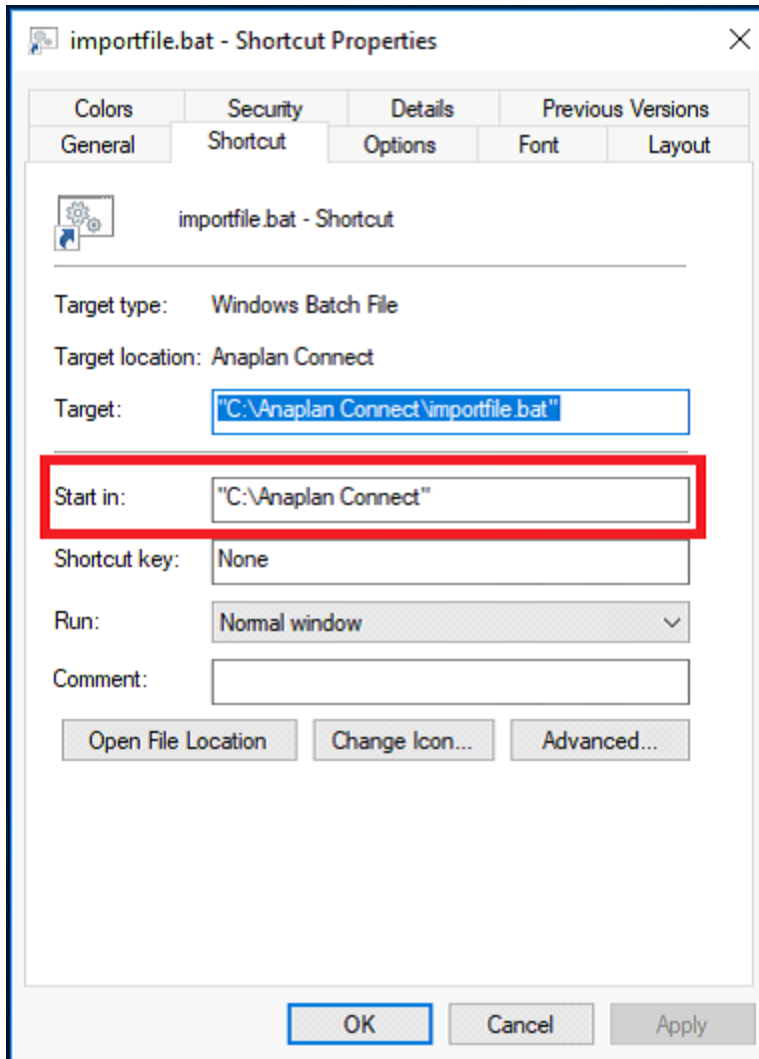
This example is for Windows.

1. Put a copy of example.bat (in the Anaplan Connect examples folder) into the main Anaplan Connect folder.
2. Replace line 13:  
`cd %~dp0`  
with:  
`pushd %~dp0`
3. Before the pause line, insert **popd**.
4. Create a shortcut to the batch file in the same directory. Right-click and select **Create shortcut**.



5. Once the shortcut is created, right-click on the shortcut and select **Properties**.

- On the **Shortcut** tab, in the **Start in** box type the local directory that runs Anaplan Connect. For example, `%USERPROFILE%` can substitute the user's profile folder.



When given a UNC path (`\\computer\share\...`), the **pushd** maps the share to a drive, typically Z: or the last unmapped drive letter. The **popd** unmaps the drive and returns to the original location. If the command window is closed before the program completes, the drive remains mapped.



## Appendix B: Java Compatibility

Anaplan Connect supports Java 8. Note that Java 6 and 7 are not supported.

We strongly recommend you upgrade to Java 8 to benefit from the security offered by TLS 1.2 if your organization uses Java 6.x or 7.x with Anaplan Connect.



ODBC is officially deprecated in Java 8. Make sure you update any ODBC connections to use JDBC. See Appendix D: JDBC for Oracle, Access, MySQL, Excel and Appendix E: Import through a JDBC Connection for a Microsoft SQL Server database.

Use one of the options below to upgrade to Java 8.

### Create a shell script to set the `JAVA_HOME` environment variable

Write a shell script that sets the `JAVA_HOME` environment variable to the location of the Java 8 Runtime Environment you want to use. You only need to carry out this change to run the Anaplan Connect script.

### Create a replacement script

If you've already installed Anaplan Connect you can create your own replacement script. The instructions in this section do not change the version of Java you use for your other applications.

To create the replacement script:

1. Navigate to the Anaplan Connect directory. For example, on Windows, the directory might be `C:\anaplan-connect-1-4`.
2. Make a backup copy of the script that calls Anaplan Connect:
  - **Windows:** Make a copy of `AnaplanClient.bat` and name it `AnaplanClient.bat-OLD`.
  - **Linux/MacOS:** Make a copy of `AnaplanClient.sh` and name it `AnaplanClient.sh-OLD`.
3. Edit the script that calls Anaplan Connect:
  - **Windows:** In `AnaplanClient.bat` replace `%JAVA%` with the version directory of Java 8 to use for Anaplan Connect.
  - **Linux/MacOS:** In `AnaplanClient.sh` replace `${java}` with the version directory of Java 8 to use for Anaplan Connect.

	Windows.bat file	Linux/MacOS.sh file
<b>Original</b>	rem Start the Java virtual machine "%JAVA%" %JAVA_OPTS% -classpath "%CP%" com.anaplan.client.Program %*	# Start the Java virtual machine exec \${JAVA_OPTS} -classpath "\${classpath}" "\${java}" com.anaplan.client.Program "\$@"
<b>Change to Java 8</b>	rem Start the Java virtual machine "C:\Program Files\Java\jre1.8.0_ 66\bin\java" %JAVA_OPTS% -classpath "%CP%" com.anaplan.client.Program %*	# Start the Java virtual machine for MacOS involves /Library exec "/Library/Java/JavaVirtualMachines/jdk1.8.0_60.jdk \${JAVA_OPTS} -classpath/Contents/Home/bin/java" "\${classpath}" com.anaplan.client.Program "\$@"

The directory name on your computer might differ from these examples. For more information, visit the [Data Integration Knowledge Base](#) on Anaplan Community.

## Appendix C: List of all Operation Commands

Navigate to the installation directory and type the following to get a list of the operation commands:

Windows	C:\Windows\AnaplanConnect\AnaplanClient.bat -version Java AnaplanClient -version
Java	AnaplanClient -version
Linux/Mac OS	./AnaplanClient.sh ./AnaplanClient.sh -version

The following table shows the commands for the operation line of the batch file. The abbreviated syntax can be used to reduce typing, for example -x instead of -execute. Some operations are followed by a variable, such as a path to a file. For example, -put "C:\testdata\Europe P&L.txt" or -p "C:\testdata\Europe P&L.txt"

### Authentication Operators

Use these operators based on your authentication method: basic authentication or CA authentication.

#### Basic Authentication

Syntax	Abbreviated Syntax	Followed by a variable, if applicable	What it does
-user	-u	username:"password"	<b>Required.</b> Anaplan user name and optional password in the format username:"password". If the batch file (or shell script) does not set a value for the AnaplanUser, the program prompts the user to supply the username, then the password, enclosed in double-quotes.

#### CA Authentication

##### Option 1: Authentication using a Private Key

When using Certificate Authority (CA) authentication with your Private Key, the required operators are -*certificate* and -*privatekey*.

Syntax	Abbreviated Syntax	Followed by a variable, if applicable	What it does
-certificate	-c	Pathname on local machine	<b>Required.</b> Path to user certificate used for authentication (an alternative to using a key store)
-privatekey	-pkey	<privatekey path>:<passphrase>	<b>Required.</b> Path to user private key and passphrase used for authentication (an alternative to using a key store)

### Option 2: Authentication using a Java KeyStore

When using Certificate Authority (CA) authentication with a Java KeyStore, the required operators are *-certificate* or a combination of *-keystore*, *-keystorealias*, and *-keystorepass*.

Syntax	Abbreviated Syntax	Followed by a variable, if applicable	What it does
-certificate	-c	Pathname on local machine	<b>Required.</b> Path to user certificate used for authentication (an alternative to using a key store)
-keystore	-k	Pathname on local machine	<b>Required.</b> Path to local key store containing user certificate(s) for authentication
-keystorealias	-ka	Alias	<b>Required.</b> Alias of the public certificate in the specified key store
-keystorepass	-kp	Password	<b>Required.</b> Password for the key store. If this option is not provided, and the file ~/.anaplan/api-client/keystore-access.txt exists (where ~ is the user's home directory), the password is read and decoded from the contents of this file. Otherwise, the user is prompted for a password. Note that obfuscation is the URL-encoded form of the result of: taking the exclusive -or of each of the characters in the password and the value 129

## Proxy Operators

Use these operators for proxies.

Syntax	Abbreviated Syntax	Followed by a variable, if applicable	What it does
-via	-v	Proxy URL	Use specified proxy
-viauser	-vu	username:password or domain/workstation/username:password	For basic proxy authentication, use username and password. For NTLM proxy authentication, use domain/workstation/username and password. Consider NTLM Authentication using JCIFS .

## Required Operators

The batch file must have each of these operators in addition to an action operator.

Syntax	Abbreviated Syntax	Followed by a variable, if applicable	What it does
-authServiceUrl	-auth	The URL for authentication (ex. "https://auth.anaplan.com")	<b>Required.</b> Specifies the URL for the authentication service
-model	-m	Model ID	Select a model by ID
-service	-s		<b>Required.</b> API service endpoint.
-workspace	-w	Workspace ID	<b>Required.</b> Select a workspace by ID.

## Action Operators

You can specify operators for import, export, process, and delete actions.

### Import

Use for importing your data into Anaplan.

Syntax	Abbreviated Syntax	Followed by a variable, if applicable	What it does
- execute	-x		<b>Required.</b> Run the preceding -import, -export, -process, or -action.
-file	-f	File name on Anaplan server	<b>Required.</b> File name on Anaplan server. Select a server file by ID or name.
-import	-i	Import name or ID	<b>Required.</b> Select an import by ID or name.
-locale	-xl	ISO language and country code separated by underscores. For example, "en_US"	Specify the locale to use when performing the server operation, which affects the available data formats when parsing date values in imports, and the month names when using a specified timescale format. For details, see <a href="http://docs.oracle.com/javase/8/docs/api/java/util/Locale.html">http://docs.oracle.com/javase/8/docs/api/java/util/Locale.html</a>
-output	-o	Pathname on local machine	<b>Required.</b> Retrieve dump file for completed import.
-put	-p	Pathname on local machine	Upload the specified file.
-putc			Upload to specified server file from tab-separated standard input
-puts			Upload to specified server file from standard input

## Export

Use to export data from Anaplan.

Syntax	Abbreviated Syntax	Followed by a variable, if applicable	What it does
- execute	-x		<b>Required.</b> Run the preceding -import, -export, -process, or -action.
-export	-e	Export name or ID	<b>Required.</b> Select an export by ID or name
-get	-t	Pathname on local machine	Download the specified file.
-gets			Write specified server file to standard output.

Syntax	Abbreviated Syntax	Followed by a variable, if applicable	What it does
getc			Write tab-separated server file to standard output.

## Process

Use the process action if you want to run a combination of actions, such as import, export, and delete.

Syntax	Abbreviated Syntax	Followed by a variable, if applicable	What it does
- execute	-x		<b>Required.</b> Run the preceding -import, -export, -process, or -action.
- process	-pr	Process name or ID	<b>Required.</b> Select a process by ID or name.

## Delete

Use to delete data from Anaplan.

Syntax	Abbreviated Syntax	Followed by a variable, if applicable	What it does
-action	-a	Action name or ID	<b>Required.</b> Select a saved action. For example, Delete items from a list.
- execute	-x		<b>Required.</b> Run the preceding -import, -export, -process, or -action.

## Listing

Use these commands to list the appropriate output.

Syntax	Abbreviated Syntax	Followed by a variable, if applicable	What it does
-actions	-A		List available actions in selected model, such as delete actions. This list corresponds to the Other Actions (Settings tab, Actions) list, and does not include Processes, Imports, or Exports.
-exports	-E		List available exports in selected model.
-files	-F		List available files on the Anaplan server in the selected model.
-imports	-I		List available imports in the selected model. The output lists all import definitions that are available in a given model. The list of imports and exports is also available in Anaplan. To view, click <b>Actions</b> on the Settings tab.
-modules	-MO		List available modules in selected model
-processes	-P		List available processes in selected model
-views	-VI		List available views in selected module

## Optional Parameters

Use these parameters to customize Anaplan Connect for your specific needs.



Syntax	Abbreviated Syntax	Followed by a variable, if applicable	What it does
-chunksize	-ch		<p>Determines the size of chunks for import in bytes. Select a whole non decimal number between 1 - 50MB (defaults to 1MB).</p> <p>Note: The -chunksize parameter must be specified before the -put parameter.</p> <p>Example: In the following example we have set the chunksize to 5MB. Operation="-file 'My Source.txt' -chunksize 5 -put 'data/My Source.txt' -import 'My Module from My Source.txt' -execute -output 'data/My Errors.txt'"</p>
-connectorproperty	-xc	Property identifier and value separated by colon. If value is ?, prompt user	Specify import data source connection property. For example, Salesforce credentials.
-debug	-d		Show detailed (verbose) output, which can help you debug any problems. See Getting Debug Information.
-emd			Get metadata for an export
-help	-h		Display this help
-mappingproperty	-xm	Dimension and value separated by colon. If value is ?, prompt user	Specify prompt-at-runtime import mapping value

Syntax	Abbreviated Syntax	Followed by a variable, if applicable	What it does
-maxretrycount	-mrc	Retry count	Maximum retry count for API calls. If not specified, the default is 3 retries. The minimum value can be 3 and the maximum value 15.
-quiet	-q		Show less detailed output
-retrytimeout	-rt	Timeout in seconds	<p>The number of times, in seconds, to attempt to reconnect HTTP client calls if disconnected. If not specified, the default is 3 seconds. The minimum value can be 3 and the maximum value 30.</p> <p>If there is a socket timeout, the -retrytimeout value starts after the socket timeout interval.</p> <p>Note that the timeout value multiplies by 1.5 for each iteration specified by the -maxretrycount parameter. For example, if you have a -maxretrycount 3 and -retrytimeout 3, the first timeout is 3 seconds. The second timeout is <math>3 * 1.4 = 4.5</math> seconds. The third timeout is <math>4.5 * 1.5 = 6.75</math> seconds.</p>
-view	-vi	View name or ID	Select a view by ID or name

## Appendix D: JDBC for Oracle, Access, and Excel

Provided you have the appropriate JDBC driver, you can link directly into Anaplan from databases such as Oracle, Access, MySQL, or from Excel. Both lists and data can be imported into Anaplan in this way, and when combined with a scheduler, can be updated on a regular basis automatically.

The command contains a single argument *-jdbproperties*, which provides the path to a properties file.

```
set Operation=-file "Anaplan_Demo_Sql" -jdbproperties  
</path/to/jdbc.properties>
```

The *jdbc.properties* file contains the connection details including the path to the database, username, password, and the query string.



**Note:** A properties file can contain only one query. If you have multiple queries, create a properties file for each query.

```
# JDBC Connection string (Oracle, Mysql, H2, etc.)  
jdbc.connect.url= "jdbc:mysql://localhost:3306/apcustomer"  
  
# JDBC login username  
jdbc.username=user1  
  
#JDBC login password  
jdbc.password=dbpasswordforuser1  
  
# (Optional) JDBC Fetch size, might not be applicable for all JDBC flavors.  
jdbc.fetch.size=10  
  
# Boolean flag, needs to be true if provided {jdbc.query} is a  
# stored-procedure/function call.  
# Defaults to false if no value provided, or invalid.  
jdbc.isStoredProcedure=false  
  
# SQL query could be Select or a Stored-Procedure/Function call. In case of latter,  
# require {jdbc.isStoredProcedure} above set to "true".  
# NOTE: SQL query needs to be parametrized with ? placeholders and values for  
# placeholders needs to be provided below in {jdbc.params}.  
jdbc.query=" SELECT * FROM Anaplan where col1 = ? and col2 = ?"  
  
# JDBC parameters for parametrized SQL query in {jdbc.query} above.
```

# NOTE: Number of parameters must equal to the number of parameters provided in {jdbc.query} above.

jdbc.params= 1234,ABC

Where:

-jdbc.connect.url	<p>-jdbcurl is the location of your database instance. This location does not have to be on the local host if the machine connecting to the database has access to the network location.</p> <p>To connect to an ODBC source (no longer supported in JRE 8+), you must configure your URL as follows:</p> <p><i>"jdbc:odbc:location_of_instance"</i></p>
- jdbc.username	<p>The database username.</p> <p>If no user name or password is required by the source, omit the <i>-jdbcuser</i> parameter.</p>
- jdbc.password	<p>The database password.</p> <p>If no user name or password is required by the source, omit the <i>-jdbcpassword</i> parameter.</p>
- jdbc.fetch.size	Limits the number of rows that will be returned by the query.
- jdbc.isStoredProcedure	Boolean value that indicates whether the following statement (jdbc.query) is a stored procedure or function call.
-jdbc.query	<p>-Specifies the query type</p> <p>-jdbc.query = "SELECT * FROM Anaplan where col1 = ? and col2 = ?" is the query to run.</p>
-jdbc.params	<p>JDBC parameters for parametrized SQL query in {jdbc.query} above.</p> <p>-jdbc.params = 1234,ABC</p>

## Appendix E: Import a JDBC Connection for a Microsoft SQL Server Database

An alternative to importing data into Anaplan from a file on the local host is to import data from a relational database using a Java Database Connectivity (JDBC) connection.

- The database can be any database that directly supports JDBC.
- Although you write Windows batch files (or Linux/Mac OS shell script files) for Anaplan Connect to run, Anaplan Connect itself is written in Java, and thus is well-suited for JDBC.
- Anaplan Connect supports using JDBC for Import into Anaplan, not for exporting from Anaplan into an external database. In effect, you run a query against the database, but you can't update the database.

### Preparation

If you want to create a connection to a Microsoft SQL Server database:

1. Copy a .jar file from the Microsoft SQL Server database server or client tools directory. If using Microsoft SQL Server 2008, the file name is *sqljdbc41.jar*.
2. Paste the .jar file into the **lib** subfolder of the Anaplan Connect installation.
3. Make sure you have the following information:
  - UNC path to the Sql Server instance
  - Valid user name and password for the database login
  - A valid query to select the data you want brought into Anaplan.

For example, `SELECT * FROM MYTABLE`

An example batch file for an Import action through JDBC:

```
@echo off
rem This example loads a source text file and runs an Anaplan import into a module.
rem For details of how to configure this script see doc\Anaplan Connect User Guide.doc
set AnaplanUser="Anaplan.User@anaplan.com:Password"
set WorkspaceId="8a8194884b27c72b014bf06a2b227f90"
set ModelId="CD9662D60CA84E9A871C1C5D061C7426"
set Operation=-file "Anaplan_Demo_Sql" -jdbcproperties "C:\My Source.txt" >
rem *** End of settings - Do not edit below this line ***
setlocal enableextensions enabledelayedexpansion || exit /b 1
```

```
cd %~dp0
if not %AnaplanUser% == "" set Credentials=-user %AnaplanUser%
set Command=.\AnaplanClient.bat %Credentials% -workspace %WorkspaceId% -model %ModelId% %Operation%
@echo %Command%
cmd /c %Command%
pause
set Operation=-file "Anaplan_Demo_Sql" -jdbcproperties </path/to/jdbc.properties>
```

The `jdbc.properties` file contains the connection details including the path to the database, username, password, and the query string.



**Note:** A properties file can contain only one query. If you have multiple queries, create a properties file for each query.

```
# JDBC Connection string (Oracle, Mysql, H2, etc.)
jdbc.connect.url=jdbc:sqlserver://localhost:1433;DatabaseName=my_database

# JDBC login username
jdbc.username=user1


#JDBC login password
jdbc.password=dbpasswordforuser1

# (Optional) JDBC Fetch size, might not be applicable for all JDBC flavors.
jdbc.fetch.size=10

# Boolean flag, needs to be true if provided {jdbc.query} is a
# stored-procedure/function call.
# Defaults to false if no value provided, or invalid.
jdbc.isStoredProcedure=false

# SQL query could be Select or a Stored-Procedure/Function call. In case of latter,
# require {jdbc.isStoredProcedure} above set to "true".
# NOTE: SQL query needs to be parametrized with ? placeholders and values for
# placeholders needs to be provided below in {jdbc.params}.
jdbc.query=SELECT * FROM Anaplan where col1 = ? and col2 = ?
# JDBC parameters for parametrized SQL query in {jdbc.query} above.
# NOTE: Number of parameters must equal to the number of parameters provided in {jdbc.query} above.
jdbc.params= 1234,ABC
```

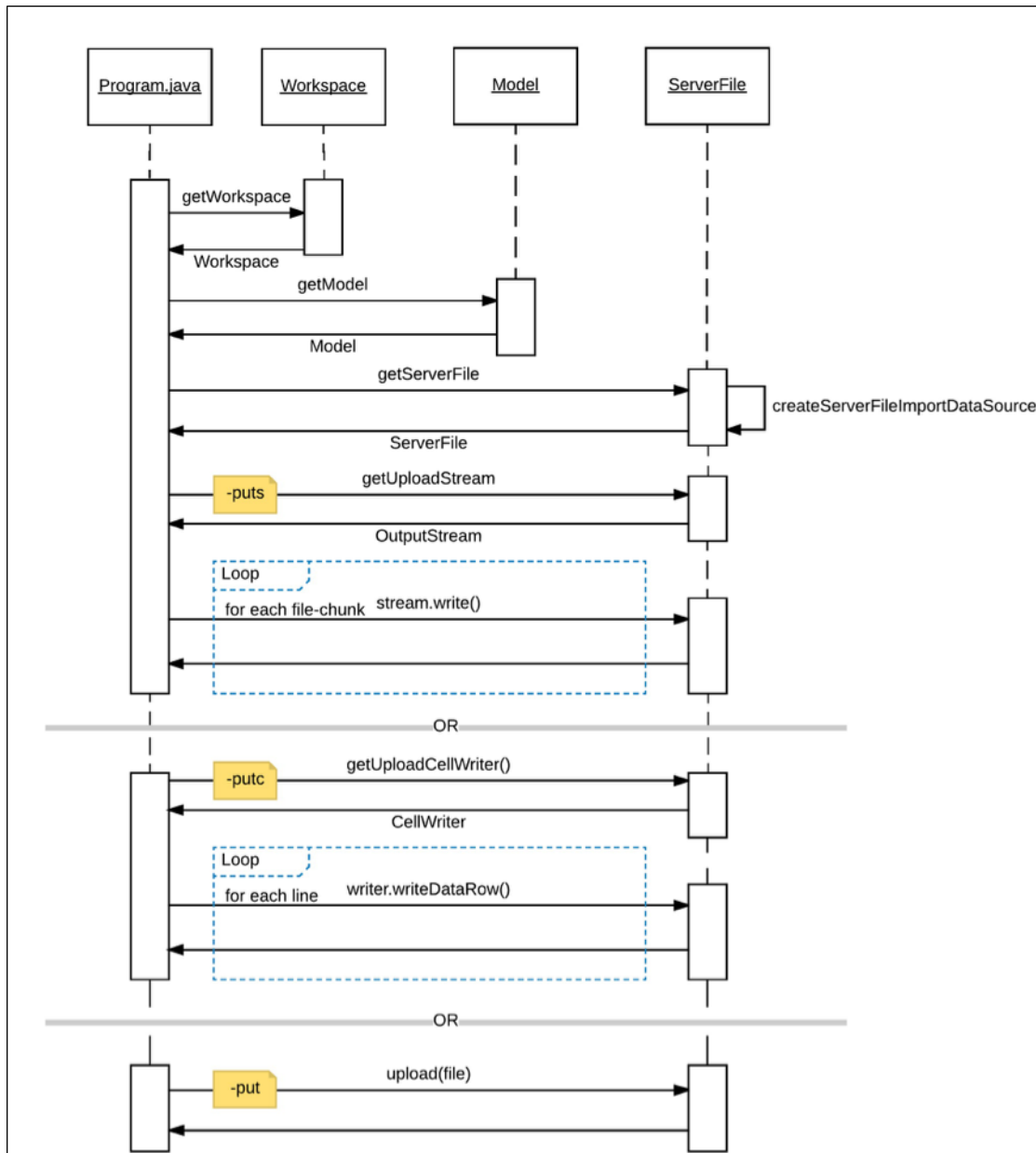
where:

Query	Description
-jdbc.connect.url	<p>The location of your database instance. If the connecting machine has network access, this location can be remote.</p> <p>To connect to an ODBC source, configure the URL as follows:</p> <p>jdbc:odbc:location_of_instance</p> <div>  <b>Note:</b> If you want to use Anaplan Connect to import from an ODBC data source, note that Java 8 does not support the JDBC-ODBC Bridge (see <a href="https://blogs.oracle.com/Lance/entry/removal_of_the_jdbc_odbc">https://blogs.oracle.com/Lance/entry/removal_of_the_jdbc_odbc</a>). </div>
-jdbc.username	The username for the JDBC database. If the source does not require a user name and password, do not include this parameter.
-jdbc.password	The password for the JDBC database. If the source does not require a user name and password, do not include this parameter.
-jdbc.fetch.size	Specifies the number of rows returned by the query.
-jdbc.isStoredProcedure	If this boolean value is true, the jdbc.query is defined as a stored procedure. If this value is false, the jdbc.query is defined as a function call.
-jdbc.query	<p>Specifies the query type.</p> <p>For example:</p> <p>SELECT * FROM Anaplan where col1 = ? and col2 = ?</p>
-jdbc.params	<p>The JDBC parameters for the parametrized SQL query in the above -jdbc.query.</p> <p>For example:</p> <p>-jdbc.params=1234,ABC</p>

## Appendix F: Sequence Diagrams

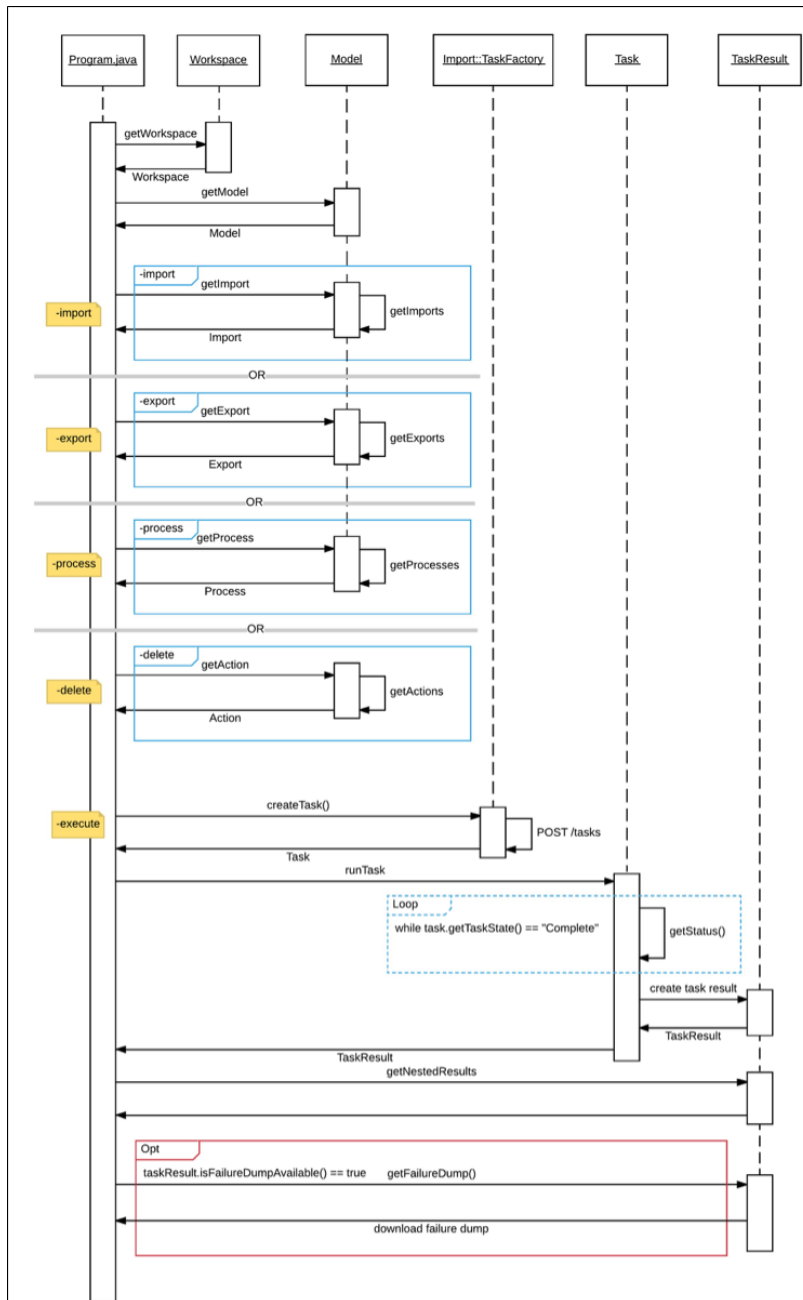
These diagrams illustrate the upload and import/export sequences used in Anaplan Connect.

### Upload sequence diagram





## Import/Export Sequence Diagram



## Appendix G: Linux and MacOS Scripts

Below are several Linux and Mac OS example scripts that supplement the instructions.

### Upload and Import Using a Proxy (Authenticated Proxy)

```
#!/bin/sh

#This example uploads a file and runs an import
AnaplanUser=username:password
WorkspaceId="workspaceid"
ModelId="modelid"
ServiceUrl="https://api.anaplan.com"
AuthUrl="https://auth.anaplan.com"
ActionName=""
ImportName="import action name"
ExportName=""
FileName="import data source name"
FilePath="import file location"
ChunkSize=1
OutputName=""
ErrorDump="error dump location"
ProxyUrl="proxyhost:proxyport"
ProxyUser=username:password

Operation="-debug -service ${ServiceUrl} -auth ${AuthUrl} -via '${ProxyUrl}' -viauser ${ProxyUser} -workspace
${WorkspaceId} -model ${ModelId} -chunksize ${ChunkSize} -file '${FileName}' -put ${FilePath} -import
'${ImportName}' -execute -output '${ErrorDump}' "

#_____ Do not edit below this line _____

if [ "${AnaplanUser}" ]; then
Credentials="-user ${AnaplanUser}"
fi

if [ "${CertPath}" ]; then
#Credentials="-keystore ${KeyStorePath} -keystorepass ${KeyStorePass} -keystorealias ${KeyStoreAlias}"
Credentials="-certificate ${CertPath} -keystore ${KeyStorePath} -keystorepass ${KeyStorePass} -keystorealias
${KeyStoreAlias}" # THIS IS ANOTHER APPROACH OF PROVIDING THE RAW CERTIFICATE VIA -certificate
#THIS IS ANOTHER APPROACH OF PROVIDING THE RAW CERTIFICATE VIA -certificate
fi
```

```
echo cd "`dirname "$0"`"
cd "`dirname "$0"`"
if [ ! -f AnaplanClient.sh ]; then
echo "Please ensure this script is in the same directory as AnaplanClient.sh." >&2
exit 1
elif [ ! -x AnaplanClient.sh ]; then
echo "Please ensure you have executable permissions on AnaplanClient.sh." >&2
exit 1
fi
```

```
Command="./AnaplanClient.sh ${Credentials} ${Operation} "
/bin/echo "${Command}"
exec /bin/sh -c "${Command}"
```

## Upload and Import Using a Proxy (Unauthenticated Proxy)

```
#!/bin/sh
#This example uploads a file and runs an import

AnaplanUser=username:password
WorkspaceId="workspaceid"
ModelId="modelid"
ServiceUrl="https://api.anaplan.com"
AuthUrl="https://auth.anaplan.com"
ActionName=""
ImportName="import action name"
ExportName=""
FileName="import data source name"
FilePath="import file location"
ChunkSize=1
OutputName=""
ErrorDump="error dump location"
ProxyUrl="proxyhost:proxyport"

Operation="-debug -service ${ServiceUrl} -auth ${AuthUrl} -via '${ProxyUrl}' -workspace ${WorkspaceId} -model
${ModelId} -chunksize ${ChunkSize} -file '${FileName}' -put ${FilePath} -import '${ImportName}' -execute -
output '${ErrorDump}' "

#_____ Do not edit below this line _____

if [ "${AnaplanUser}" ]; then
```

```

    Credentials="-user ${AnaplanUser}"
fi

if [ "${CertPath}" ]; then
    #Credentials="-keystore ${KeyStorePath} -keystorepass ${KeyStorePass} -keystorealias ${KeyStoreAlias}"
    Credentials="-certificate ${CertPath} -keystore ${KeyStorePath} -keystorepass ${KeyStorePass} -keystorealias ${KeyStoreAlias}"    # THIS IS ANOTHER APPROACH OF PROVIDING THE RAW CERTIFICATE VIA -certificate
    # THIS IS ANOTHER APPROACH OF PROVIDING THE RAW CERTIFICATE VIA -certificate
fi

echo cd "`dirname "$0"`"
cd "`dirname "$0"`"
if [ ! -f AnaplanClient.sh ]; then
    echo "Please ensure this script is in the same directory as AnaplanClient.sh." >&2
    exit 1
elif [ ! -x AnaplanClient.sh ]; then
    echo "Please ensure you have executable permissions on AnaplanClient.sh." >&2
    exit 1
fi

Command="./AnaplanClient.sh ${Credentials} ${Operation} "
/bin/echo "${Command}"
exec /bin/sh -c "${Command}"

```

## Delete Content from a Module (Basic Authentication)

```

#!/bin/sh
#This example deletes selected content from the module

AnaplanUser=username:password
WorkspaceId="workspaceid"
ModelId="modelid"
ServiceUrl="https://api.anaplan.com"
AuthUrl="https://auth.anaplan.com"
ActionName="delete action name"
ImportName=""
ExportName=""
FileName=""
FilePath=""
ChunkSize=""
OutputName=""

```

```
Operation="-debug -service ${ServiceUrl} -auth ${AuthUrl} -workspace ${WorkspaceId} -model ${ModelId} -action
'${ActionName}' -execute"
```

```
# _____ Do not edit below this line _____
```

```
if [ "${AnaplanUser}" ]; then
    Credentials="-user ${AnaplanUser}"
fi
```

```
echo cd "`dirname "$0"`"
cd "`dirname "$0"`"
if [ ! -f AnaplanClient.sh ]; then
    echo "Please ensure this script is in the same directory as AnaplanClient.sh." >&2
    exit 1
elif [ ! -x AnaplanClient.sh ]; then
    echo "Please ensure you have executable permissions on AnaplanClient.sh." >&2
    exit 1
fi
```

```
#Command="./AnaplanClient.sh ${Credentials} -workspace ${WorkspaceId} -model ${ModelId} ${Operation}"
Command="./AnaplanClient.sh ${Credentials} ${Operation} "
/bin/echo "${Command}"
exec /bin/sh -c "${Command}"
```

## Delete Content from a Module (Certificate Authentication)

```
#!/bin/sh
#This example deletes selected content from the module
#AnaplanUser=integraqa@anaplan.com:Welcome1
CertPath="certificate location"
KeyStorePath="keystore location"
KeyStorePass="keystore password"
KeyStoreAlias="keystore alias"
WorkspaceId="workspaceid"
ModelId="modelid"
ServiceUrl="https://api.anaplan.com"
AuthUrl="https://auth.anaplan.com"
ActionName="delete action name"
ImportName=""
ExportName=""
```

```

FileName=""
FilePath=""
ChunkSize=""
OutputName=""

Operation="-debug -service ${ServiceUrl} -auth ${AuthUrl} -workspace ${WorkspaceId} -model ${ModelId} -action
'${ActionName}' -execute"

#_____ Do not edit below this line _____

if [ "${AnaplanUser}" ]; then
    Credentials="-user ${AnaplanUser}"
fi

if [ "${KeyStorePath}" ]; then
    Credentials="-keystore ${KeyStorePath} -keystorepass ${KeyStorePass} -keystorealias ${KeyStoreAlias}"
    #Credentials="-certificate ${CertPath} -keystore ${KeyStorePath} -keystorepass ${KeyStorePass} -keystorealias
    ${KeyStoreAlias}"    # THIS IS ANOTHER APPROACH OF PROVIDING THE RAW CERTIFICATE VIA -certificate
    # THIS IS ANOTHER APPROACH OF PROVIDING THE RAW CERTIFICATE VIA -certificate
fi

echo cd "`dirname "$0"`"
cd "`dirname "$0"`"
if [ ! -f AnaplanClient.sh ]; then
    echo "Please ensure this script is in the same directory as AnaplanClient.sh." >&2
    exit 1
elif [ ! -x AnaplanClient.sh ]; then
    echo "Please ensure you have executable permissions on AnaplanClient.sh." >&2
    exit 1
fi

#Command="./AnaplanClient.sh ${Credentials} -workspace ${WorkspaceId} -model ${ModelId} ${Operation}"

Command="./AnaplanClient.sh ${Credentials} ${Operation} "
/bin/echo "${Command}"
exec /bin/sh -c "${Command}"

```

## Export (Basic Authentication)

```

#!/bin/sh
#This example exports a file

```

```

AnaplanUser=username:password
WorkspaceId="workspaceid"
ModelId="modelid"
ServiceUrl="https://api.anaplan.com"
AuthUrl="https://auth.anaplan.com"
ActionName=""
ImportName=""
ExportName="exportactionname"
FileName="location for exported data"
FilePath=""
ChunkSize=""
OutputName=""
ErrorDump=""

Operation="-debug -service ${ServiceUrl} -auth ${AuthUrl} -workspace ${WorkspaceId} -model ${ModelId} -export
'${ExportName}' -execute -get '${FileName}'"

# _____ Do not edit below this line _____

if [ "${AnaplanUser}" ]; then
    Credentials="-user ${AnaplanUser}"
fi

if [ "${CertPath}" ]; then
    Credentials="-keystore ${KeyStorePath} -keystorepass ${KeyStorePass} -keystorealias ${KeyStoreAlias}"
    #Credentials="-certificate ${CertPath} -keystore ${KeyStorePath} -keystorepass ${KeyStorePass} -keystorealias
    ${KeyStoreAlias}"    # THIS IS ANOTHER APPROACH OF PROVIDING THE RAW CERTIFICATE VIA -certificate
    # THIS IS ANOTHER APPROACH OF PROVIDING THE RAW CERTIFICATE VIA -certificate
fi

echo cd "`dirname "$0"`"
cd "`dirname "$0"`"
if [ ! -f AnaplanClient.sh ]; then
    echo "Please ensure this script is in the same directory as AnaplanClient.sh." >&2
    exit 1
elif [ ! -x AnaplanClient.sh ]; then
    echo "Please ensure you have executable permissions on AnaplanClient.sh." >&2
    exit 1
fi

```

```
Command="./AnaplanClient.sh ${Credentials} ${Operation} "
/bin/echo "${Command}"
exec /bin/sh -c "${Command}"
```

## Export (Certificate Authentication)

```
#!/bin/sh

#This example uploads a file and runs an export

#AnaplanUser=integraqa@anaplan.com:Welcome1
CertPath="certificate location"
KeyStorePath="keystore location"
KeyStorePass="keystore password"
KeyStoreAlias="keystore alias"
WorkspaceId="workspaceid"
ModelId="modelid"
ServiceUrl="https://api.anaplan.com"
AuthUrl="https://auth.anaplan.com"
ActionName=""
ImportName=""
ExportName="exportactionname"
FileName="location for exported data"
FilePath=""
ChunkSize=""
OutputName=""
ErrorDump=""

Operation="-debug -service ${ServiceUrl} -auth ${AuthUrl} -workspace ${WorkspaceId} -model ${ModelId} -export
'${ExportName}' -execute -get '${FileName}'"

#_____ Do not edit below this line _____

if [ "${AnaplanUser}" ]; then
    Credentials="-user ${AnaplanUser}"
fi

if [ "${KeyStorePath}" ]; then
    #Credentials="-keystore ${KeyStorePath} -keystorepass ${KeyStorePass} -keystorealias ${KeyStoreAlias}"
    Credentials="-certificate ${CertPath} -keystore ${KeyStorePath} -keystorepass ${KeyStorePass} -keystorealias
${KeyStoreAlias}"    # THIS IS ANOTHER APPROACH OF PROVIDING THE RAW CERTIFICATE VIA -certificate
    # THIS IS ANOTHER APPROACH OF PROVIDING THE RAW CERTIFICATE VIA -certificate
```



```

fi

echo cd "`dirname "$0"`"
cd "`dirname "$0"`"
if [ ! -f AnaplanClient.sh ]; then
    echo "Please ensure this script is in the same directory as AnaplanClient.sh." >&2
    exit 1
elif [ ! -x AnaplanClient.sh ]; then
    echo "Please ensure you have executable permissions on AnaplanClient.sh." >&2
    exit 1
fi

Command="./AnaplanClient.sh ${Credentials} ${Operation} "
/bin/echo "${Command}"
exec /bin/sh -c "${Command}"

```

## Import (Basic Authentication)

```

#!/bin/sh
#This example uploads a file and runs an import

AnaplanUser=username:password
WorkspaceId="workspaceid"
ModelId="modelid"
ServiceUrl="https://api.anaplan.com"
AuthUrl="https://auth.anaplan.com"
ActionName=""
ImportName="import action name"
ExportName=""
FileName="import data soruce name"
FilePath="import file location"
ChunkSize=1
OutputName=""
ErrorDump="error dump location"

Operation="-debug -service ${ServiceUrl} -auth ${AuthUrl} -workspace ${WorkspaceId} -model ${ModelId} -
chunksize ${ChunkSize} -file '${FileName}' -put ${FilePath} -import '${ImportName}' -execute -output
'${ErrorDump}' "

# _____ Do not edit below this line _____

```

```

if [ "${AnaplanUser}" ]; then
    Credentials="-user ${AnaplanUser}"
fi

if [ "${CertPath}" ]; then
    #Credentials="-keystore ${KeyStorePath} -keystorepass ${KeyStorePass} -keystorealias ${KeyStoreAlias}"
    Credentials="-certificate ${CertPath} -keystore ${KeyStorePath} -keystorepass ${KeyStorePass} -keystorealias
${KeyStoreAlias}"    # THIS IS ANOTHER APPROACH OF PROVIDING THE RAW CERTIFICATE VIA -certificate
    # THIS IS ANOTHER APPROACH OF PROVIDING THE RAW CERTIFICATE VIA -certificate
fi

echo cd "`dirname "$0"`"
cd "`dirname "$0"`"
if [ ! -f AnaplanClient.sh ]; then
    echo "Please ensure this script is in the same directory as AnaplanClient.sh." >&2
    exit 1
elif [ ! -x AnaplanClient.sh ]; then
    echo "Please ensure you have executable permissions on AnaplanClient.sh." >&2
    exit 1
fi

Command="./AnaplanClient.sh ${Credentials} ${Operation} "
/bin/echo "${Command}"
exec /bin/sh -c "${Command}"

```

## Import (Certificate Authentication)

```

#!/bin/sh
#This example uploads a file and runs an import

#AnaplanUser=integraqa@anaplan.com:Welcome1
CertPath="certificate location"
KeyStorePath="keystore location"
KeyStorePass="keystore password"
KeyStoreAlias="keystore alias"
WorkspaceId="workspaceid"
ModelId="modelid"
ServiceUrl="https://api.anaplan.com"
AuthUrl="https://auth.anaplan.com"
ActionName=""
ImportName="import action name"

```

```

ExportName=""
FileName="import data source name"
FilePath="import file location"
ChunkSize=1
OutputName=""
ErrorDump="error dump location"

Operation="-debug -service ${ServiceUrl} -auth ${AuthUrl} -workspace ${WorkspaceId} -model ${ModelId} -
chunksize ${ChunkSize} -file '${FileName}' -put ${FilePath} -import '${ImportName}' -execute -output
'${ErrorDump}' "

#_____ Do not edit below this line _____

if [ "${AnaplanUser}" ]; then
    Credentials="-user ${AnaplanUser}"
fi

if [ "${CertPath}" ]; then
    #Credentials="-keystore ${KeyStorePath} -keystorepass ${KeyStorePass} -keystorealias ${KeyStoreAlias}"
    Credentials="-certificate ${CertPath} -keystore ${KeyStorePath} -keystorepass ${KeyStorePass} -keystorealias
${KeyStoreAlias}"    # THIS IS ANOTHER APPROACH OF PROVIDING THE RAW CERTIFICATE VIA -certificate
fi

echo cd "`dirname "$0"`"
cd "`dirname "$0"`"
if [ ! -f AnaplanClient.sh ]; then
    echo "Please ensure this script is in the same directory as AnaplanClient.sh." >&2
    exit 1
elif [ ! -x AnaplanClient.sh ]; then
    echo "Please ensure you have executable permissions on AnaplanClient.sh." >&2
    exit 1
fi

Command="./AnaplanClient.sh ${Credentials} ${Operation} "
/bin/echo "${Command}"
exec /bin/sh -c "${Command}"

```

## Run a Process (Basic Authentication)

```
#!/bin/sh

#This example runs a process action

AnaplanUser=username:password
WorkspaceId="workspaceid"
ModelId="modelid"
ServiceUrl="https://api.anaplan.com"
AuthUrl="https://auth.anaplan.com"
ActionName=""
ImportName=""
ExportName=""
ProcessName="process action name"
FileName=""
FilePath=""
ChunkSize=""
OutputName=""
ImportDataSource1="import data source 1"
ImportFileName1="import file location 1"
ImportDataSource2="import data source 2"
ImportFileName2="import file location 2"
ErrorDump="error dump location"
ExportName1="export action name 1"
ExportName2="export action name 2"
FileName1="exported data location 1"
FileName2="exported data location 2"

Operation="-debug -service ${ServiceUrl} -auth ${AuthUrl} -workspace ${WorkspaceId} -model ${ModelId} -file
'${ImportDataSource1}' -put '${ImportFileName1}' -file '${ImportDataSource2}' -put '${ImportFileName2}' -
process '${ProcessName}' -execute -file '${ExportName1}' -get '${FileName1}' -file '${ExportName2}' -get
'${FileName2}' -output '${ErrorDump}'"

# _____ Do not edit below this line _____

if [ "${AnaplanUser}" ]; then
    Credentials="-user ${AnaplanUser}"
fi

if [ "${CertPath}" ]; then
```

```

Credentials="-keystore ${KeyStorePath} -keystorepass ${KeyStorePass} -keystorealias ${KeyStoreAlias}"
#Credentials="-certificate ${CertPath} -keystore ${KeyStorePath} -keystorepass ${KeyStorePass} -keystorealias
${KeyStoreAlias}"    # THIS IS ANOTHER APPROACH OF PROVIDING THE RAW CERTIFICATE VIA -certificate
    # THIS IS ANOTHER APPROACH OF PROVIDING THE RAW CERTIFICATE VIA -certificate
fi

echo cd "`dirname "$0`"
cd "`dirname "$0`"
if [ ! -f AnaplanClient.sh ]; then
    echo "Please ensure this script is in the same directory as AnaplanClient.sh." >&2
    exit 1
elif [ ! -x AnaplanClient.sh ]; then
    echo "Please ensure you have executable permissions on AnaplanClient.sh." >&2
    exit 1
fi

Command="./AnaplanClient.sh ${Credentials} ${Operation} "
/bin/echo "${Command}"
exec /bin/sh -c "${Command}"

```

## Run a Process (Certificate Authentication)

```

#!/bin/sh
#This example uploads a file and runs an import

#AnaplanUser=integraqa@anaplan.com:Welcome1
CertPath="certificate location"
KeyStorePath="keystore location"
KeyStorePass="keystore password"
KeyStoreAlias="keystore alias"
WorkspaceId="workspaceid"
ModelId="modelid"
ServiceUrl="https://api.anaplan.com"
AuthUrl="https://auth.anaplan.com"
ActionName=""
ImportName=""
ExportName=""
ProcessName="import export delete"
FileName=""
FilePath=""
ChunkSize=""

```

```

OutputName=""
ImportDataSource1="import data source 1"
ImportFileName1="import file location 1"
ImportDataSource2="import data source 2"
ImportFileName2="import file location 2"
ErrorDump="error dump location"
ExportName1="export action name 1"
ExportName2="export action name 2"
FileName1="exported data location 1"
FileName2="exported data location 2"

Operation="-debug -service ${ServiceUrl} -auth ${AuthUrl} -workspace ${WorkspaceId} -model ${ModelId} -file
'${ImportDataSource1}' -put '${ImportFileName1}' -file '${ImportDataSource2}' -put '${ImportFileName2}' -
process '${ProcessName}' -execute -file '${ExportName1}' -get '${FileName1}' -file '${ExportName2}' -get
'${FileName2}' -output '${ErrorDump}'"

# _____ Do not edit below this line _____

if [ "${AnaplanUser}" ]; then
    Credentials="-user ${AnaplanUser}"
fi

if [ "${CertPath}" ]; then
    Credentials="-keystore ${KeyStorePath} -keystorepass ${KeyStorePass} -keystorealias ${KeyStoreAlias}"
    #Credentials="-certificate ${CertPath} -keystore ${KeyStorePath} -keystorepass ${KeyStorePass} -keystorealias
    ${KeyStoreAlias}"    # THIS IS ANOTHER APPROACH OF PROVIDING THE RAW CERTIFICATE VIA -certificate
    # THIS IS ANOTHER APPROACH OF PROVIDING THE RAW CERTIFICATE VIA -certificate
fi

echo cd "`dirname "$0"`"
cd "`dirname "$0"`"
if [ ! -f AnaplanClient.sh ]; then
    echo "Please ensure this script is in the same directory as AnaplanClient.sh." >&2
    exit 1
elif [ ! -x AnaplanClient.sh ]; then
    echo "Please ensure you have executable permissions on AnaplanClient.sh." >&2
    exit 1
fi

Command="./AnaplanClient.sh ${Credentials} ${Operation} "

```

```
/bin/echo "${Command}"  
exec /bin/sh -c "${Command}"
```