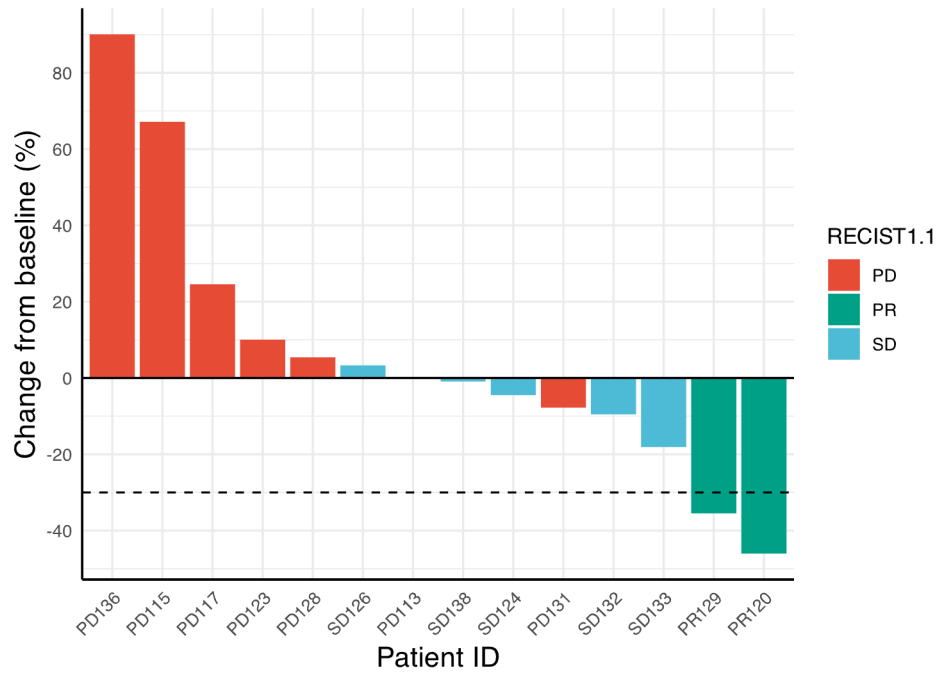
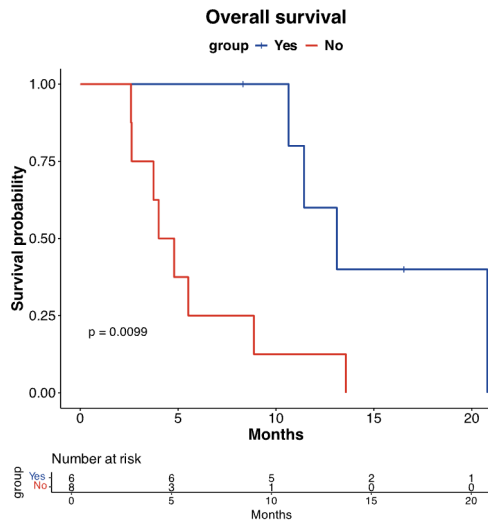


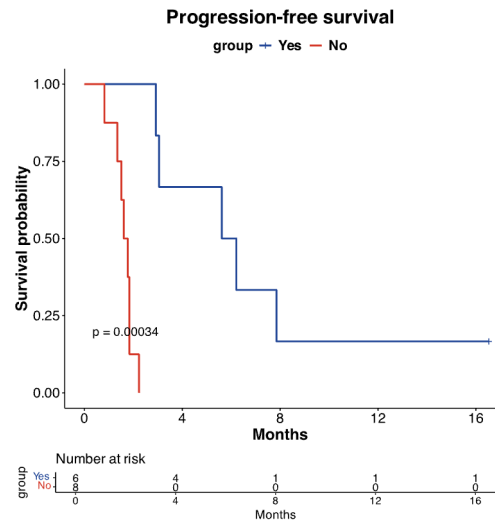
A



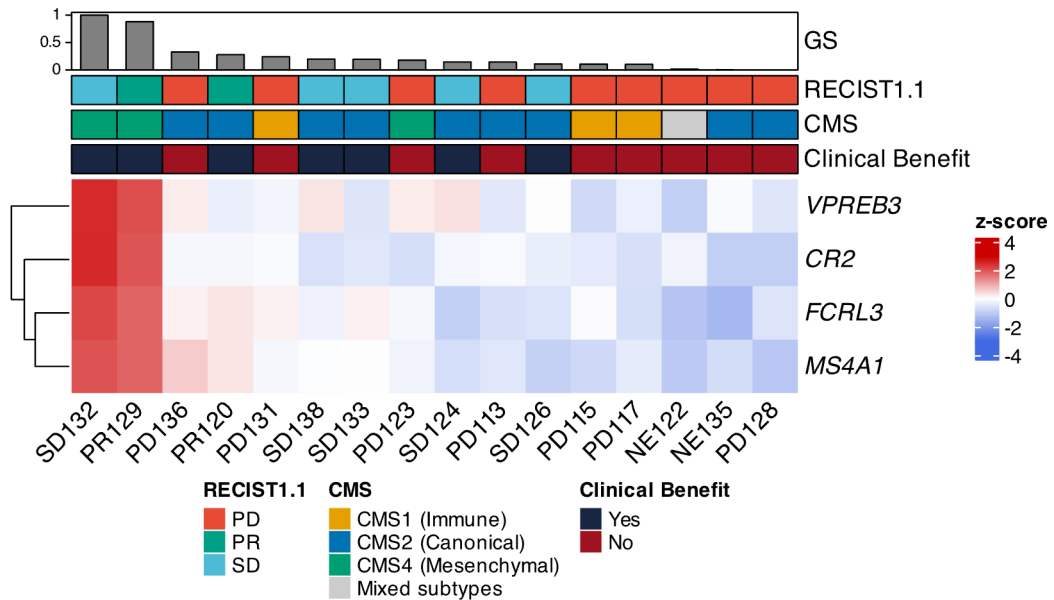
B



C



D



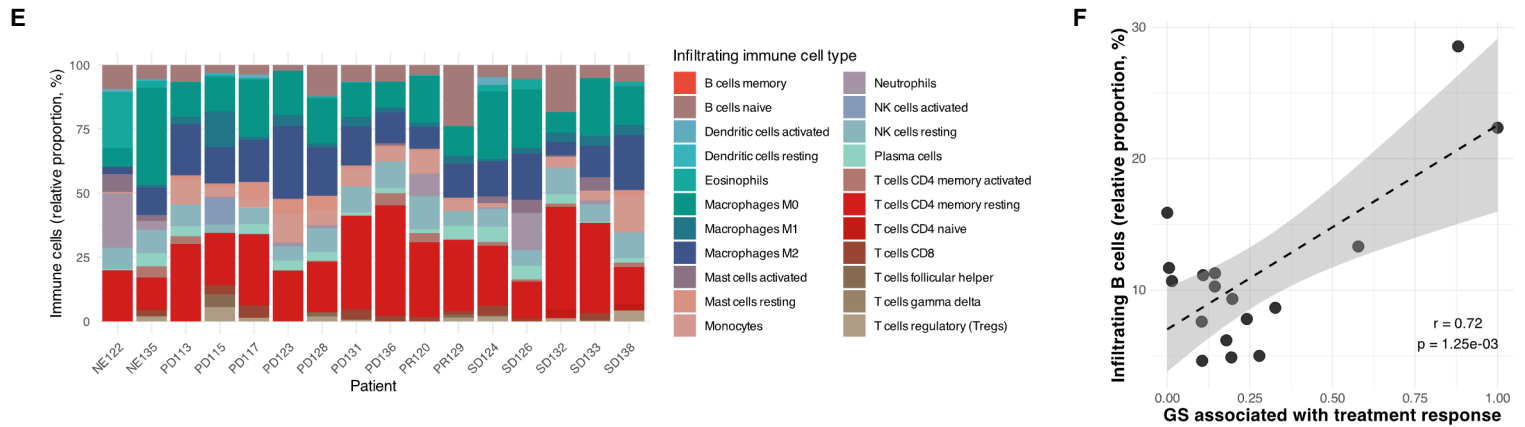


Figure 1. A. A waterfall chart illustrates the diverse response to the combined treatment of CB-839 and α EGFR. The samples are categorized into three response groups: progression disease (PD), stable disease (SD) and partial response (PR). Kaplan-Meier curves of overall survival (**B**) and progression-free survival (**C**). **D.** A heatmap summarizes the gene expression in each patient and according to the 4-gene signature and the pattern of the gene signature (GS). **E.** The proportion of immune cells in each patient estimated by CibersortX. **F.** The correlation between infiltrating B cells and the GS.

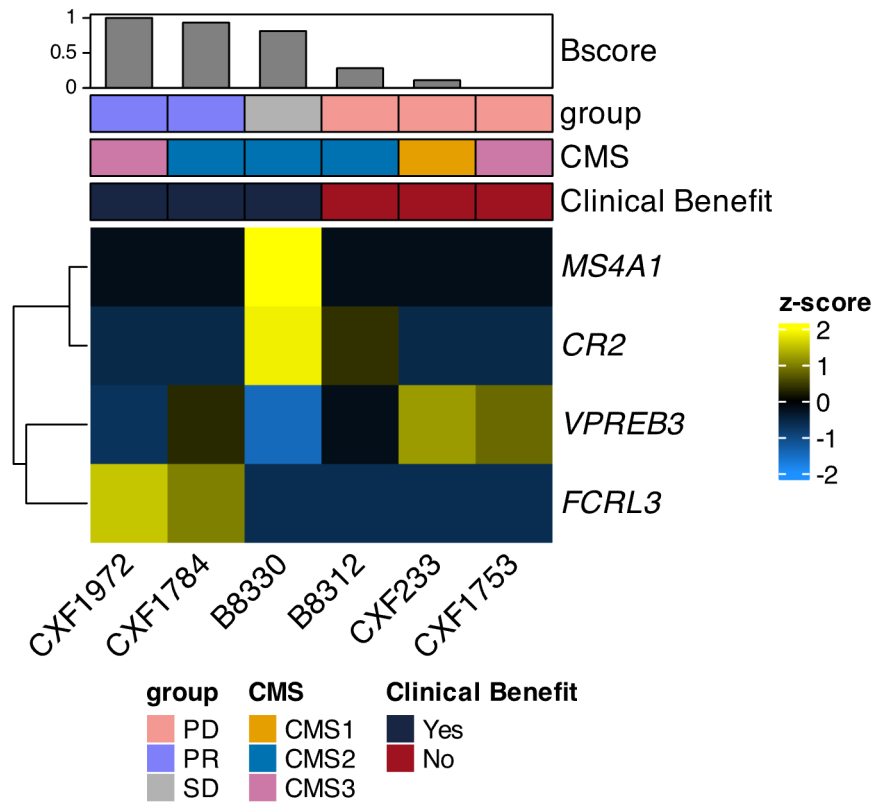


Figure 2. A heatmap summarizes the gene expression in each patient PDX and according to the 4-gene signature and the pattern of the gene signature (Bscore).

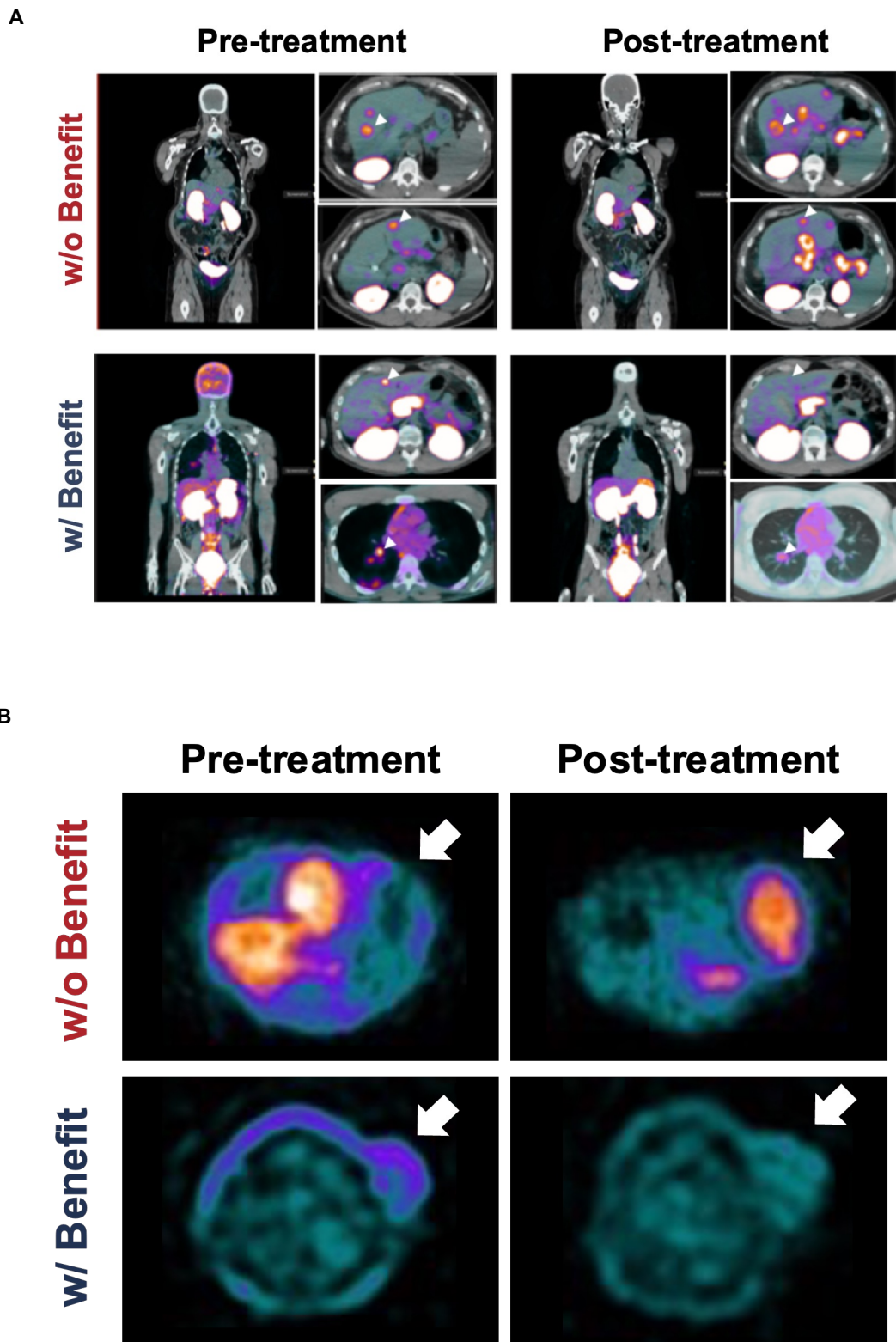


Figure 3. A. Exemplary ^{18}F -FSPG PET/CT images of two representative two patients. **B.** Exemplary ^{18}F -FSPG PET images of two representative PDX mouse models.