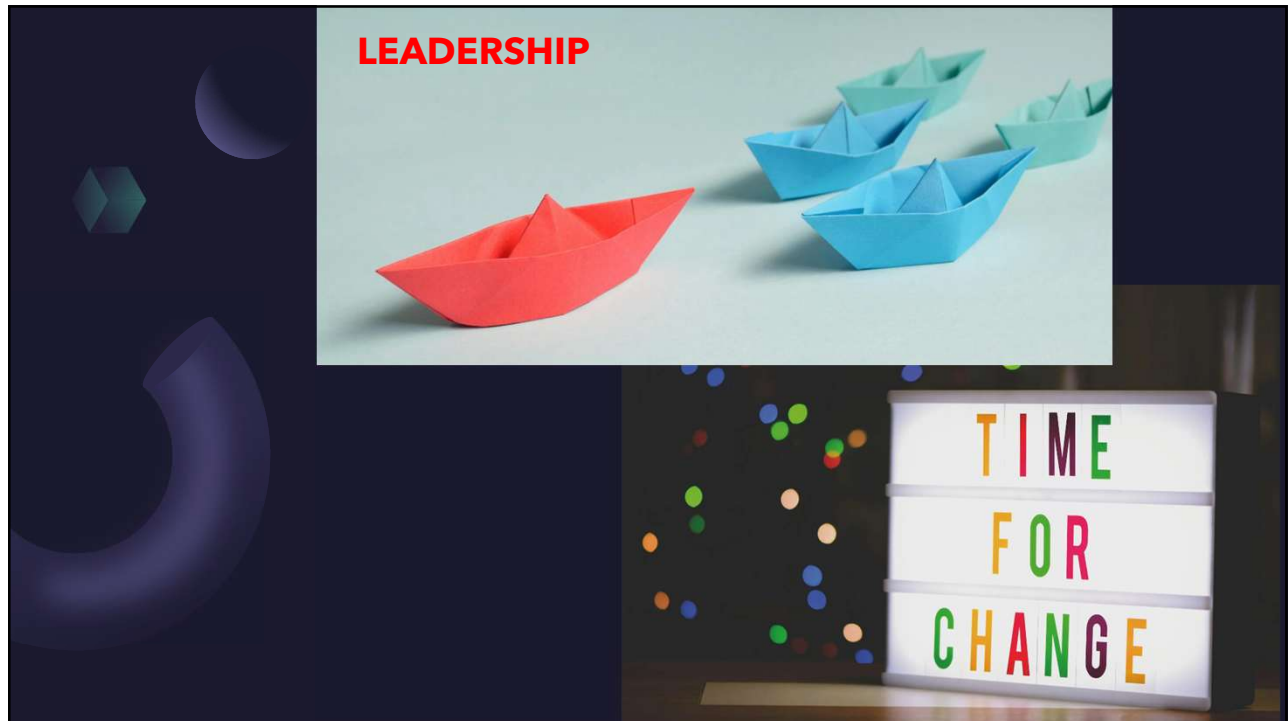




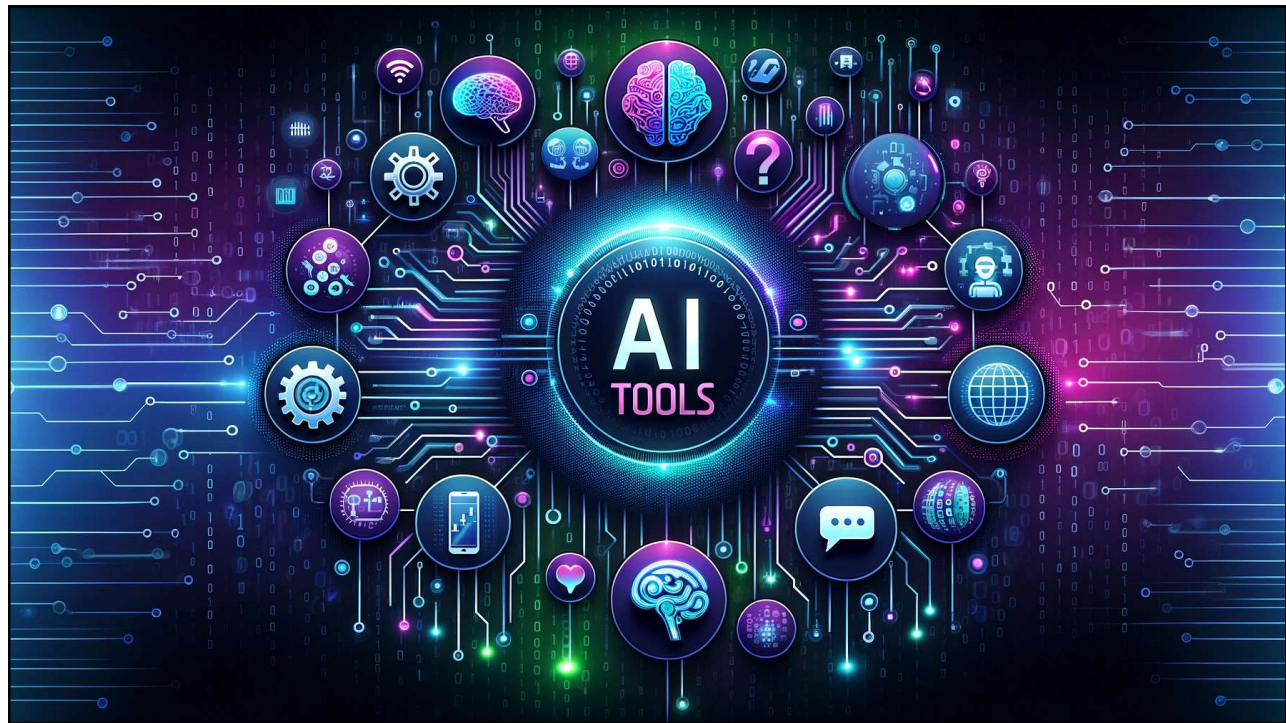
1



2



3



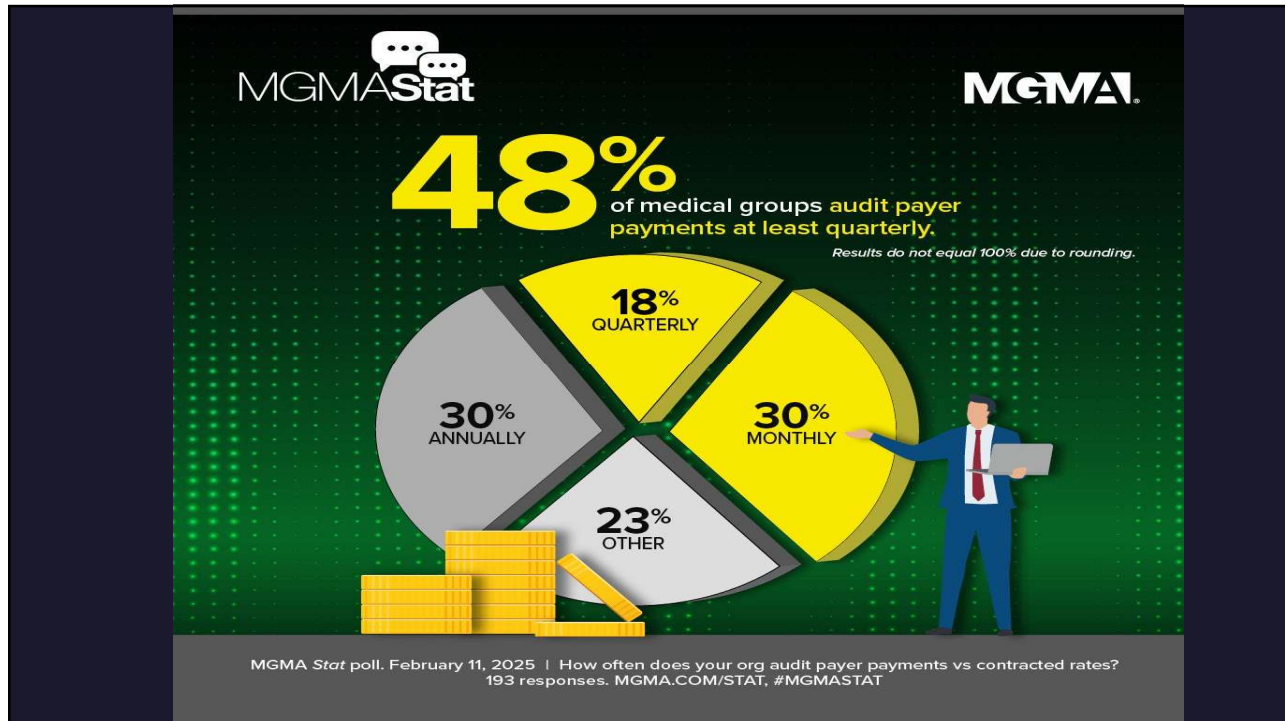
4



5



6



7

AI Is Predicting Denials Before They Occur

What's Happening

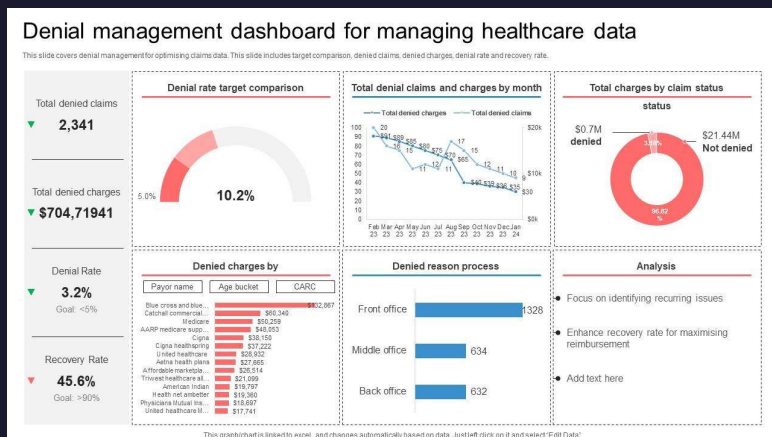
AI models predict denial probability based on payer, CPT, modifier, and documentation patterns.

Product Examples

- Waystar
- UiPath

Strategic Impact

Shifts RCM from reactive to predictive.



8

AI Optimizing Operational Pathways

AI Analyzes:

OR block inefficiency

Imaging variance

Downstream capture

Site-of-service profitability

This is margin engineering, not just efficiency.



11

Quick Test for the room – Today's marketing and AI



• Type the following into Google Gemini or ChatGPT or Claude

- Who is the best (insert one of your doctor specialties) in (insert your city) based on quality and price?
- Let's discuss some of the responses
- Why did I ask this?

12



13


Ambient AI

Product Examples

- Modernizing Medicine
- DeepScribe
- Nuance Communications (DAX Copilot)
- Suki

Impact

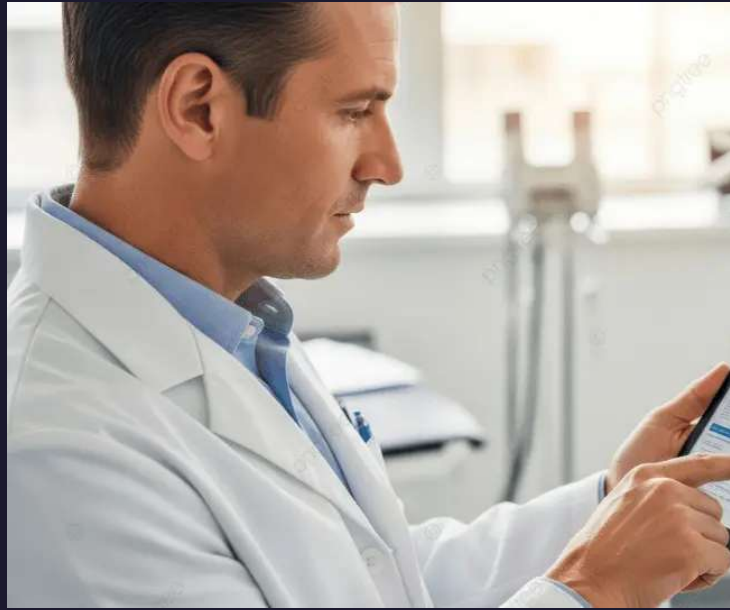
- 1-2 hours/day reclaimed
- Improved coding capture
- Reduced burnout

A photograph of a doctor in a white coat and stethoscope sitting at a desk, talking to a patient. A glowing blue AI interface is overlaid on the image, featuring a central circular graphic with concentric rings and a waveform, suggesting a digital or AI presence.

14

AI-Assisted Clinical Decision Support

- **Capabilities**
- Risk scoring
- Evidence-based prompts
- Quality metric tracking in real time



15

AI in Imaging & Diagnostics

- **Product Examples**
- Aidoc
- PathAI
- AI augments – not replaces – specialists.



16

AI-Driven Patient Triage & Virtual Front Doors

- **Product Examples**
- Babylon Health
- Ada Health
- Yourmd.online
- Reduces unnecessary visits and increases access.

Introducing Alpha AI

Healthcare reimagined.

AI-powered medical guidance. Available 24/7.
Instant, intelligent, always with you.

[Try Ask United Medical →](#) [Learn more about Alpha](#)

Hi, I'm Doctronic

I'm your private and personal AI doctor.

As an AI doctor, my service is fast and free. I've already helped people 23,302,098 times!

After we chat, if you want you can have a video visit with a top doctor for only \$39.

What can I help you with today?

Discuss a condition...

[Get Started ↗](#)

© HIPAA - Private

17

AI Predicting Clinical Deterioration

Applications

- Sepsis detection
- Readmission risk
- Chronic care escalation prediction

This becomes critical under value-based models.

Key aspects of AI in sepsis detection include:

- **Real-Time Monitoring:** AI algorithms constantly analyze patient data (vitals, labs, medications) for subtle patterns indicating deterioration.
- **Proven Efficacy:** The Targeted Real-Time Early Warning System (TREWS) identified 82% of sepsis cases early.
- **Early Intervention:** By detecting sepsis earlier, these systems enable clinicians to administer antibiotics sooner, which is crucial for reducing mortality.
- **Key Tools:**
 - **TREWS:** Developed at Johns Hopkins University, this system combines medical history and symptoms.
 - **COMPOSER:** Developed at UC San Diego, this tool alerts nurses and physicians to high-risk patients.
 - **Sepsis ImmunoScore:** The first AI tool authorized by the FDA (April 2024) for predicting patient risk of sepsis within 24 hours. [National Institutes of Health \(NIH\) | \(.gov\) +5](#)

a

b

18

AI - Let's Get out of the Box

19

AI can help with cleaning rooms

Product Examples

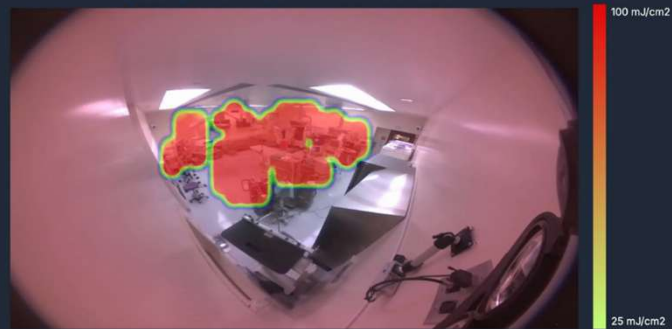
ShyldAI

HygenX

Application

- Map
- Disinfect
- Monitor high touch areas

Disinfection Image Temperature Map



20

AI as an Optimization Tool

Concept:

AI dynamically redesigns care delivery in real time.

Example in orthopaedics:

Identifies cases safe for APP-first model

Predicts postop complication risk and routes care accordingly

Auto-adjusts clinic templates weekly

Assigns MA staffing based on complexity mix

Example in sleep/pulmonary:

Identifies CPAP non-adherence early

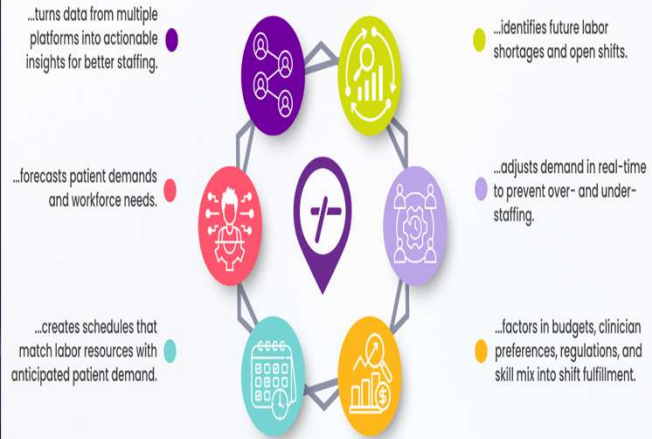
Suggests DME adjustments

Automates oxygen re-certification tracking

Out-of-the-box element:

AI doesn't just optimize scheduling – it reshapes the care model continuously.

PREDICTIVE STAFFING ANALYTICS...



21

AI Reputation Defense System

- AI monitors:
- Online reviews
- Social media sentiment
- Competitor marketing
- Payer steering patterns
- It auto-responds, generates content, and predicts referral erosion before it happens.



22

How about another Board Member who isn't "per se" biased

AI simulates:

- "What if we join a hospital?"
- "What if we stay independent?"
- "What if PE acquires?"
- "Design a fair comp plan"
- "Should we expand"
- "Should we recruit"
- Predictive modeling for governance decisions.



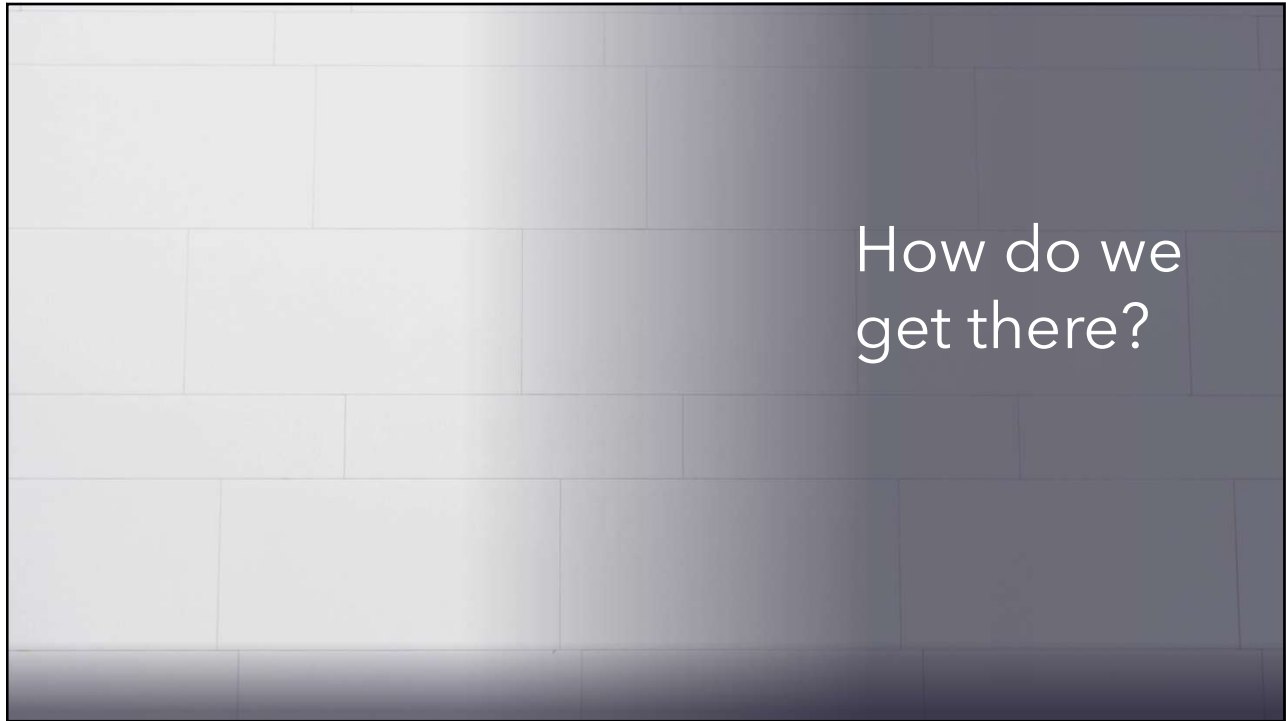
23

And, I do believe we are headed here...Autonomous Clinic

- AI triages patients
- AI determines CPT level
- AI drafts op notes
- AI submits claims
- Humans oversee



24



25



26

Be. Brave.

- Try
- Fail
- Try Again
- Fail Again
- Keep Going
- Lead. That is our role.



27

My
Suggestion -
Find your first
work version



28

