

THE MEDIAL DOUBLE & CODING FOR FLATFOOT SURGERY

Jon Goldsmith, DPM, CSFAC

Omaha, Nebraska

KPMA 2019 Annual Scientific Meeting

THE MODIFIED, MEDIAL “TRIPLE”



CHANGE

A bend in the road isn't the end of the road...unless you fail to make the turn

THE MEDIAL DOUBLE

Why shorten the lateral column?

Is the CC relevant?

Surgical technique

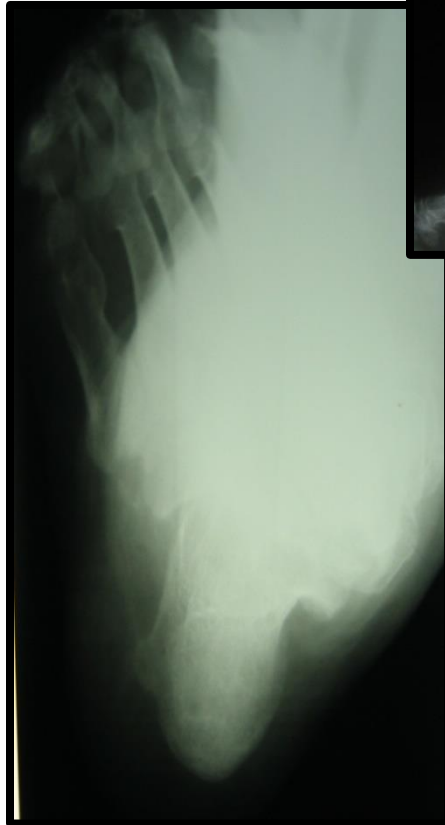


CASE PRESENTATION



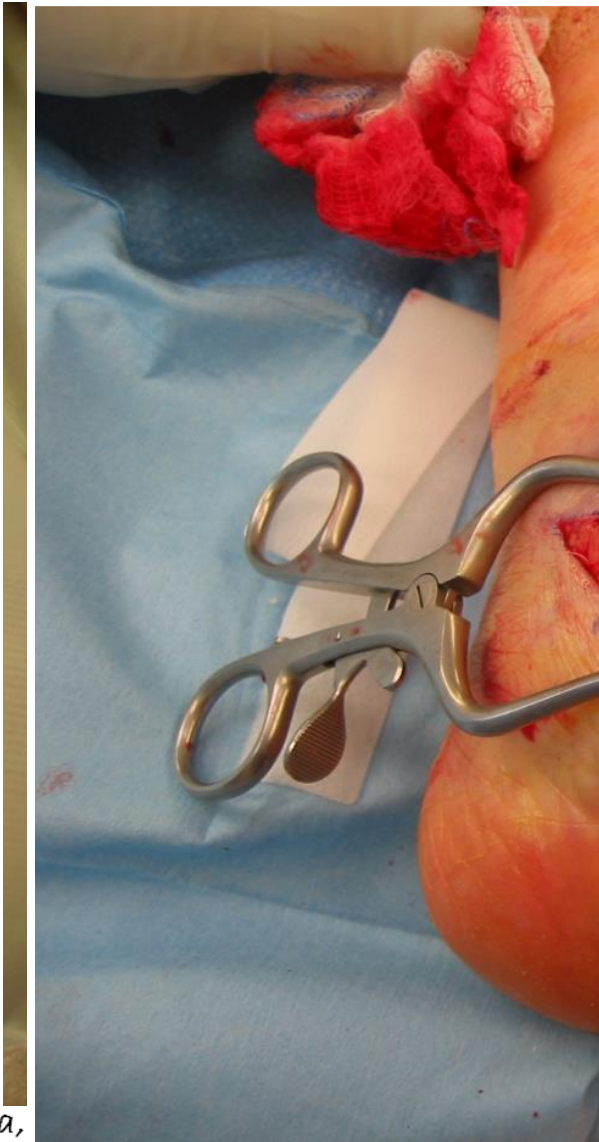
CHI Health Clinic Orthopedics
Omaha, Nebraska

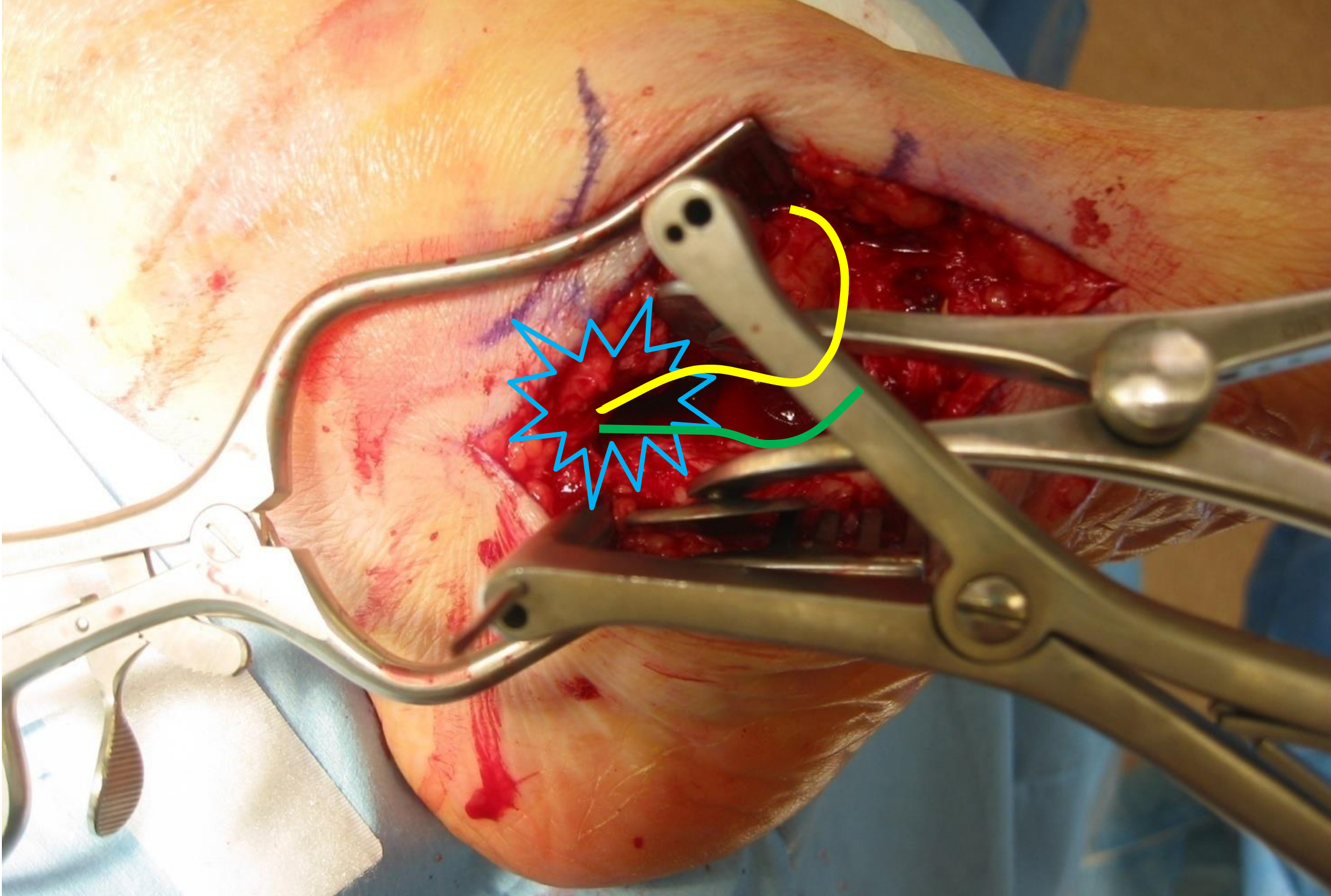
RADIOGRAPHS



CHI Health Clinic Orthopedics
Omaha, Nebraska

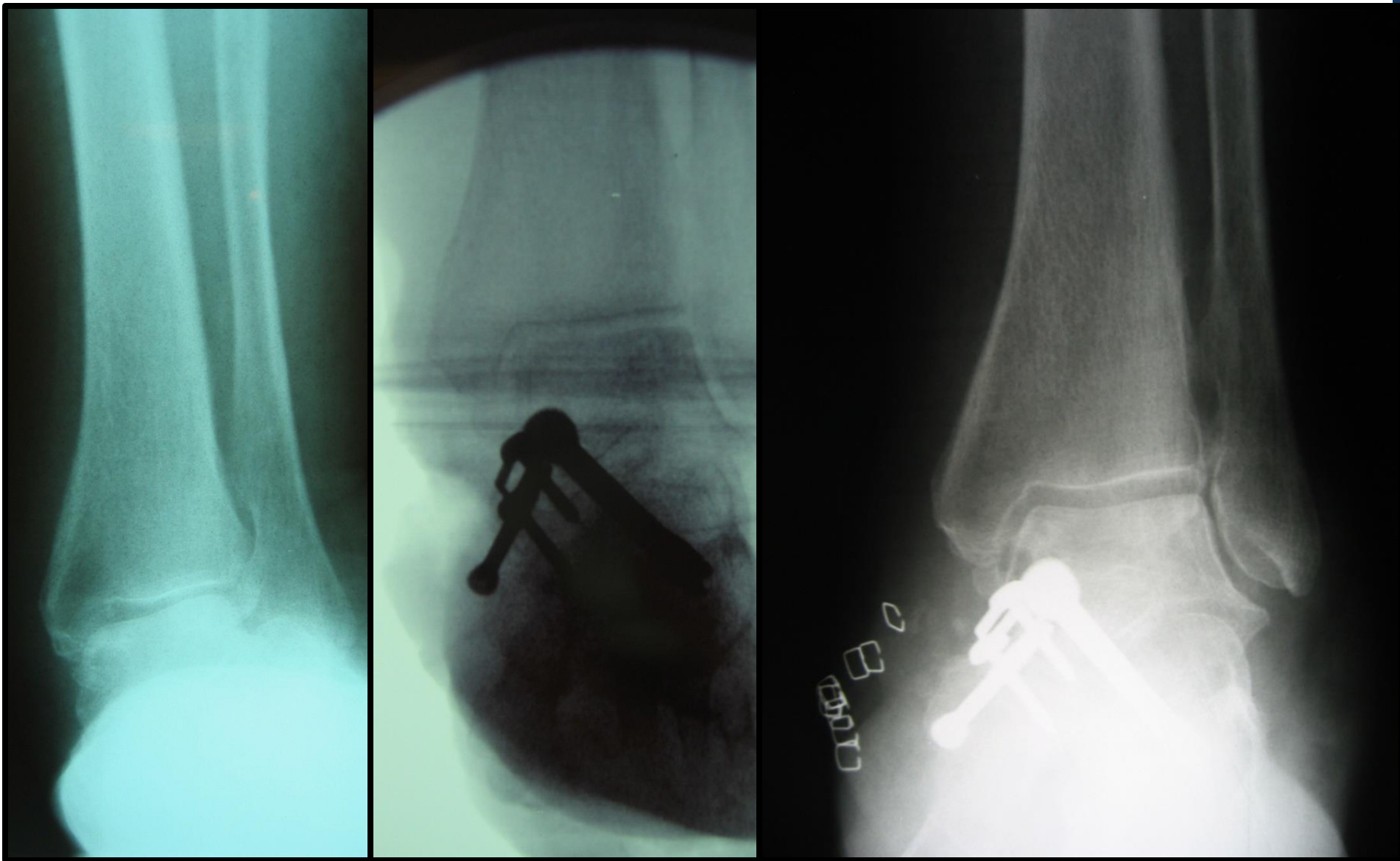
THE APPROACH



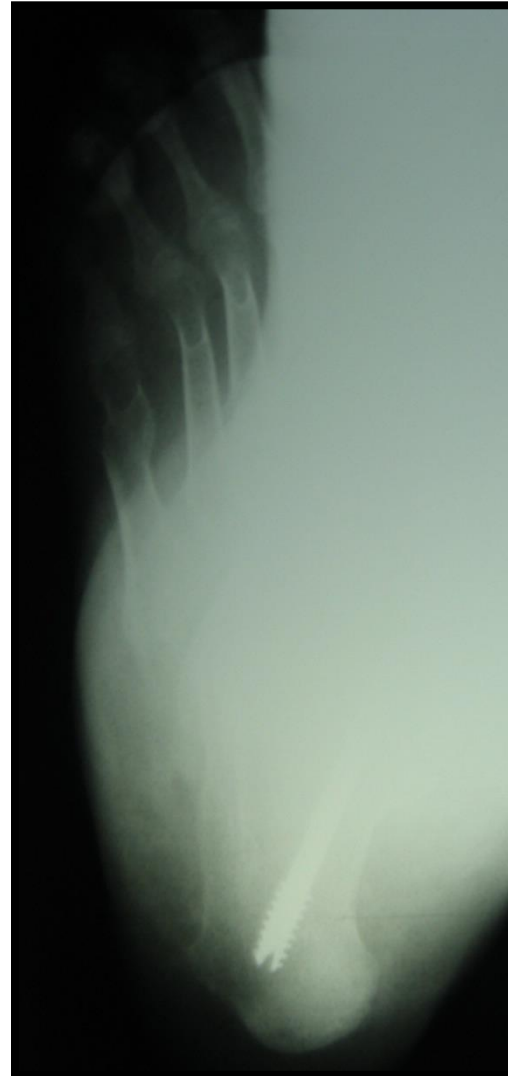
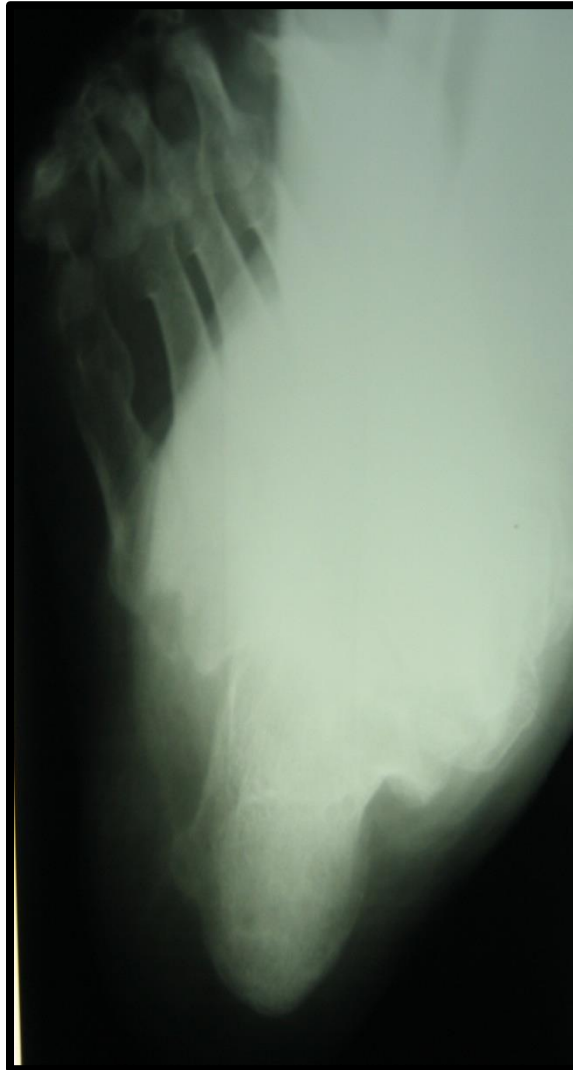


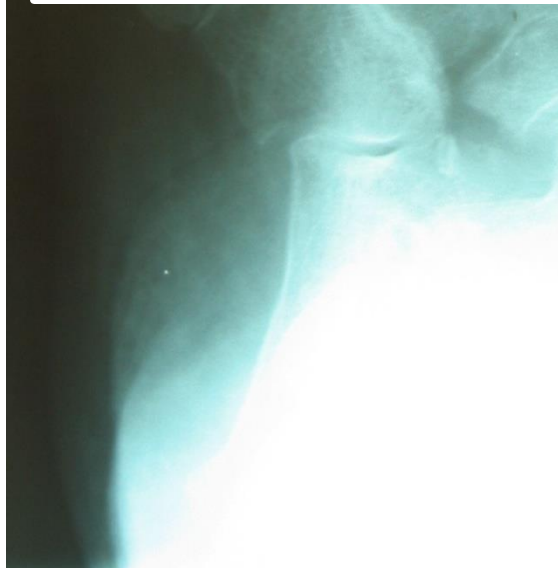
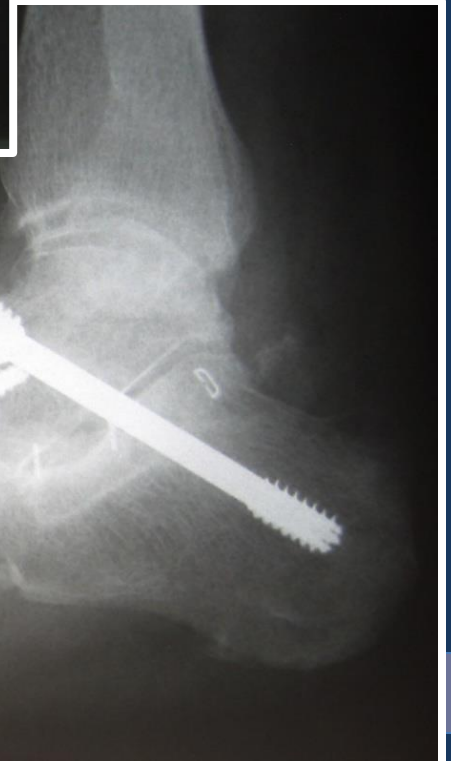
THE CORRECTION





THE CORRECTION





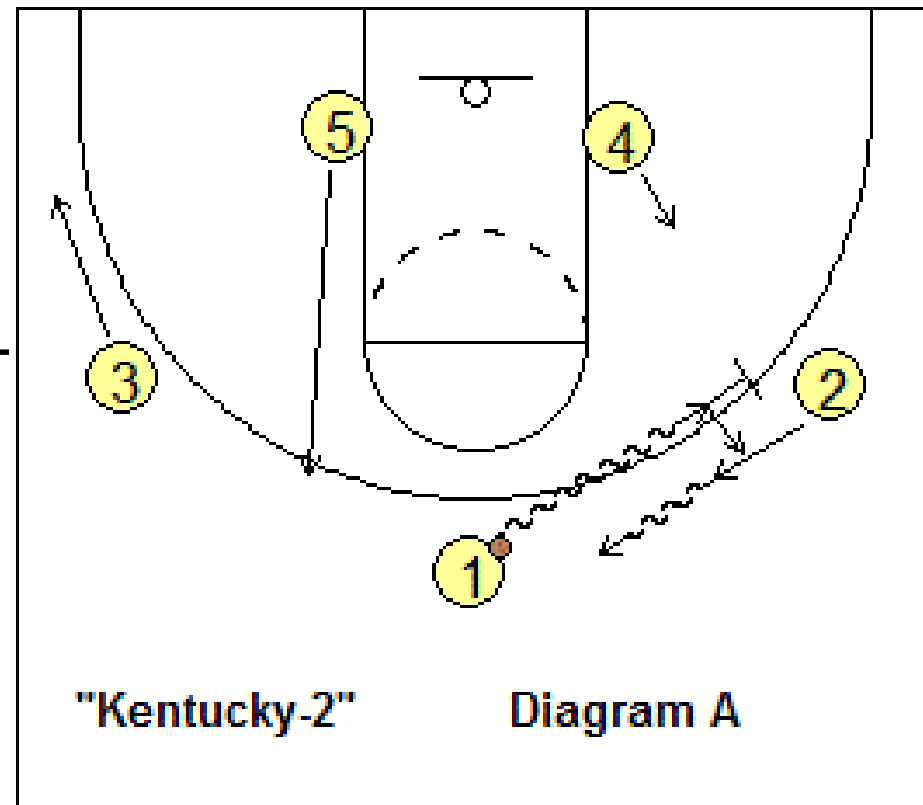
**NOW... WHAT ABOUT
CODING FOR FLAT FOOT
SURGERY?**

DISCLAIMER

The audience must remember that CPT code descriptors and coding policies do not reflect coverage and payment policies. The existence of a CPT code does not ensure payment for any service. The coverage and payment policies of governmental and commercial payers may vary. Questions regarding coverage and payment for an item or service should be directed to particular payers. Any coding advice in this lecture reflects my opinion.

PLAN OF ATTACK

- SOFT TISSUE
- ARTHROEREISIS
- OSTEOTOMIES
- FUSIONS



SOFT TISSUE



EQUINUS

- PERCUTANEOUS ACHILLES TENDON LENGTHENING

CPT 27685

- OPEN ACHILLES TENDON LENGTHENING

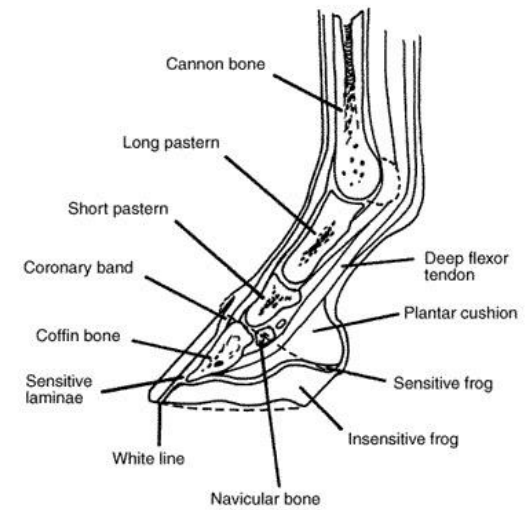
CPT 27685

- OPEN GASTROCNEMIUS RECESSION

CPT 27687

- ENDOSCOPIC GASTROCNEMIUS RECESSION

CPT 27687



FROM "THE EQUINEST"

THE TIBIALIS POSTERIOR TENDON

- DIRECT REPAIR

CPT 28200

Repair, tendon, flexor, foot; primary or secondary, without free graft, each tendon

CPT 28202

Repair, tendon, flexor, foot; secondary with free graft, each tendon (includes obtaining graft)

CPT 27658

Repair, flexor tendon, leg; primary, without graft, each tendon

CPT 27659

Repair, flexor tendon, leg; secondary, with or without graft, each tendon



THE TIBIALIS POSTERIOR TENDON

- KIDNER

CPT 28238:

Reconstruction (advancement), posterior tibial tendon with excision of accessory tarsal navicular bone (eg, Kidner type procedure)

TENDON TRANSFER

- FDL
- COBB

CPT 27691

- Transfer or transplant of single tendon, (with muscle redirection or rerouting); deep (eg, anterior tibial or posterior tibial through interosseous space, flexor digitorum longus, flexor hallucis longus, or peroneal tendon to midfoot or hindfoot)



TENDON TRANSFER

CPT 27690

- Superficial tendon transfer of single tendon (ie. Tib Ant to the extensors)

CPT 27692

- For additional transfers, add on code related directly to CPT 27691

CPT 20924

- Tendon graft from a distance



SOFT TISSUE

- REPAIR OF THE SPRING LIGAMENT

CPT 28899

Unlisted foot, procedure

- DELTOID

CPT 27698

Repair, secondary, disrupted ligament,
ankle, collateral



ARTHROEREISIS

- CPT 28899: unlisted foot, procedure
- S2117: (temporary national code)
- 0335T: (Category III) extra-osseous subtalar joint implant for talotarsal stabilization



OSTEOTOMIES



MIDFOOT OSTEOTOMIES



CPT 28304

Osteotomy, tarsal bones, other than calcaneus or talus
COTTON OSTEOTOMY

CPT 28305

Osteotomy, tarsal bones, other than calcaneus or talus;
with autograft (includes obtaining graft)



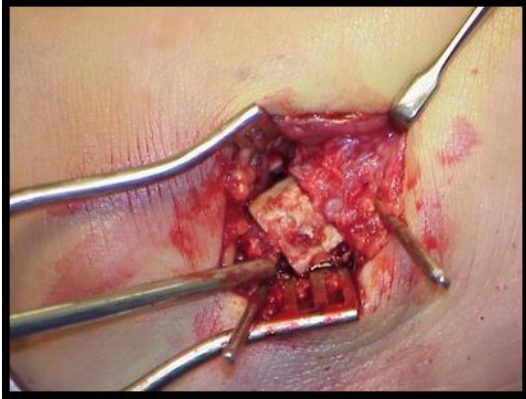
CALCANEAL OSTEOTOMIES

CPT 28300

Osteotomy; calcaneus (eg, Dwyer or Chambers type procedure), with or without internal fixation

- MEDIALIZING CALCANEAL OSTEOTOMY
- LATERAL COLUMN LENGTHENING





WHAT ABOUT A DOUBLE CALCANEAL OSTEOTOMY?



ISOLATED ARTHRODESIS

CPT 28740



Arthrodesis, midtarsal or tarsometatarsal,
single joint

TALONAVICULAR FUSION

ISOLATED ARTHRODESIS

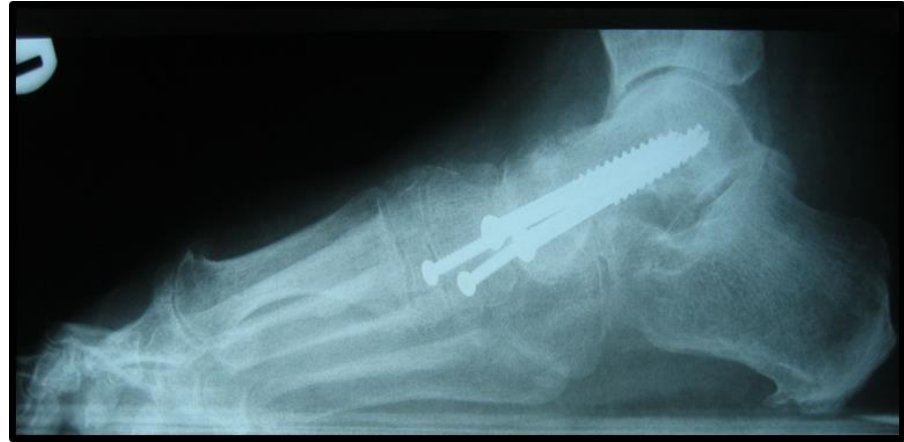


CPT 28725

- **Subtalar joint**

COMBINED FUSIONS

MEDIAL COLUMN



THE MEDIAL DOUBLE



CPT 28730

CPT 28735

CPT 28737

WHAT'S THE DIFFERENCE?

CPT 28730

**Arthrodesis,
midtarsal or
tarsometatarsal,
multiple or
transverse**

CPT 28735

Arthrodesis,
midtarsal or
tarsometatarsal,
multiple or
transverse; with
osteotomy (eg.
flatfoot
correction)

WHAT IS CPT 28737?



From <http://oldoperatingtheatre.com/>

COMBINED FUSIONS

- TRIPLE ARTHRODESIS

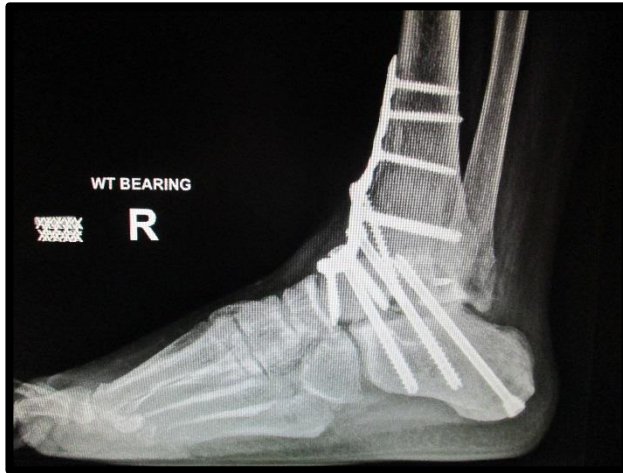
CPT 28715



- PANTALAR

CPT 28705

COMBINED FUSIONS



TIBIOTALO CALCANEAL FUSION

CPT 28725
and
CPT 27870



THANK YOU