

# Revision of the Advanced Hospital Practice APPE Rotation: Standardizing Learning Experiences within a Health-System

Tori Penick, PharmD, PGY1 Pharmacy Resident; Amanda Castle, PharmD, BCPS, Director Adult Clinical Pharmacy Services; Rachel Swope, PharmD, BCCCP, Pharmacist Clinical Manager

## BACKGROUND

Experiential education assists students in developing the knowledge, skills, and attitudes required of a pharmacy professional. These include:

- Introductory Pharmacy Practice Experiences (IPPE)
- Advanced Pharmacy Practice Experiences (APPE)

### Differentiating Experiential Education

#### IPPE

- Introduction to profession
- Patient simulation
- Service learning
- Builds on didactic coursework
- Prepare for APPEs

#### APPE

- Direct patient care
- Interprofessional interaction and practice
- Operations and distributions management
- Professional development

## PROBLEM DEFINITION

Quality assurance of experiential education within PharmD programs is consistently reported as a concern

- Lack of standardization has led to inconsistent interpretation and delivery of required APPE rotations

In 2016, the Accreditation Council for Pharmacy Education (ACPE) released updated accreditation standards

- Acknowledged concern but did not provide specific recommendations

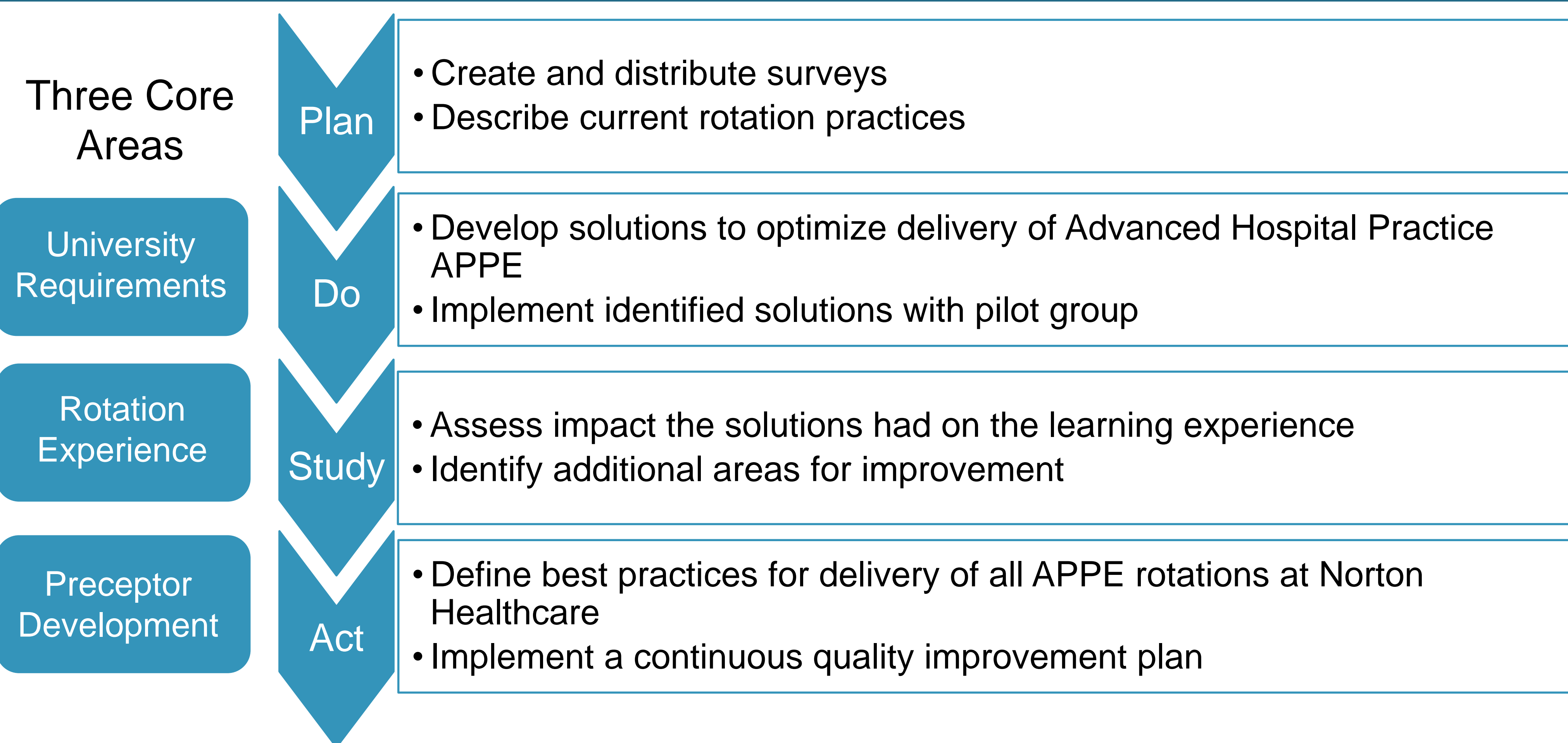
Norton Healthcare has over 70 students annually rotating through the various learning experiences

- Providing our students with high quality learning experiences is imperative as these experiences can influence post-graduate plans

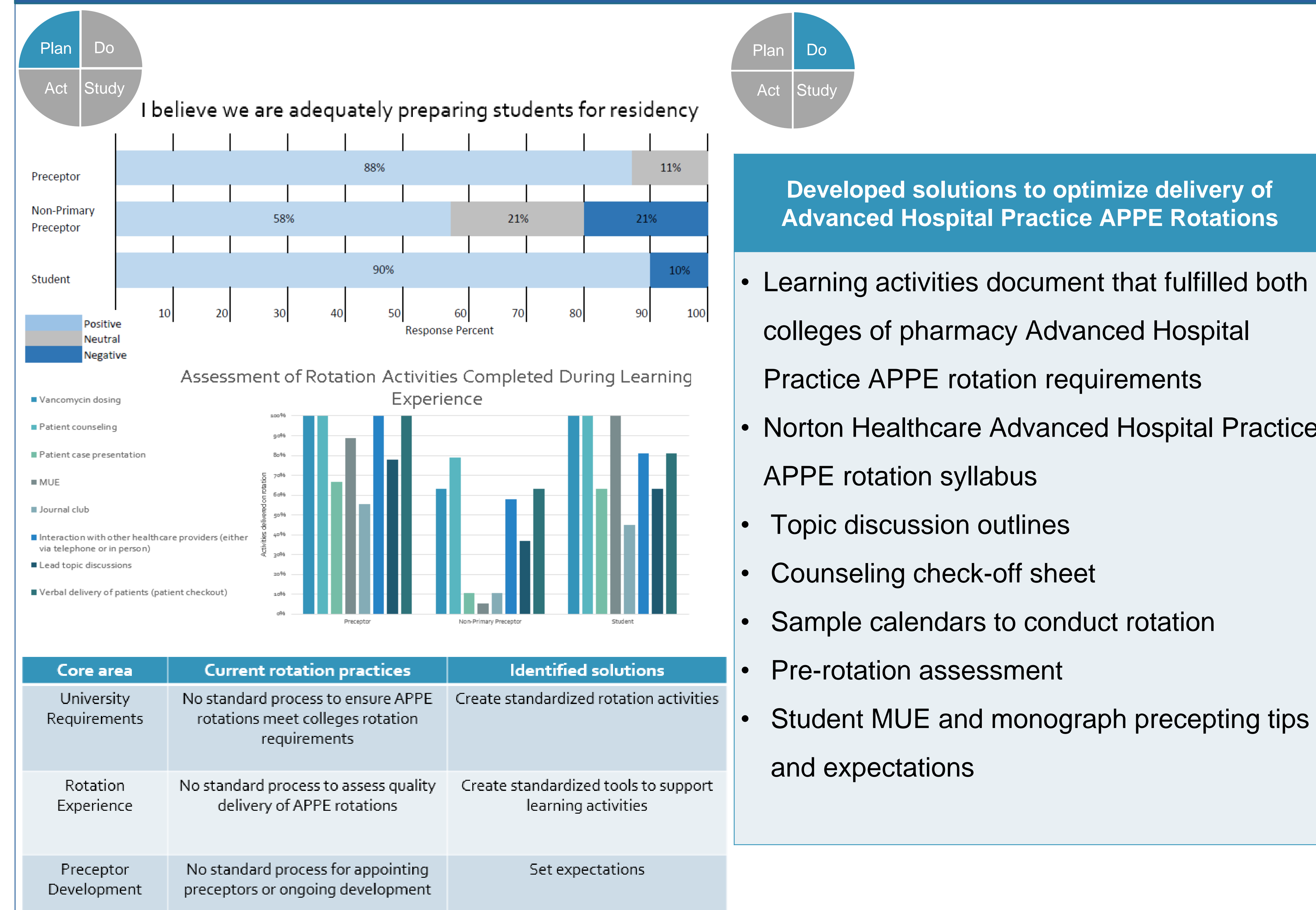
## PROJECT PURPOSE

To optimize and standardize the delivery of APPE Rotations at Norton Healthcare and implement a continuous quality improvement plan

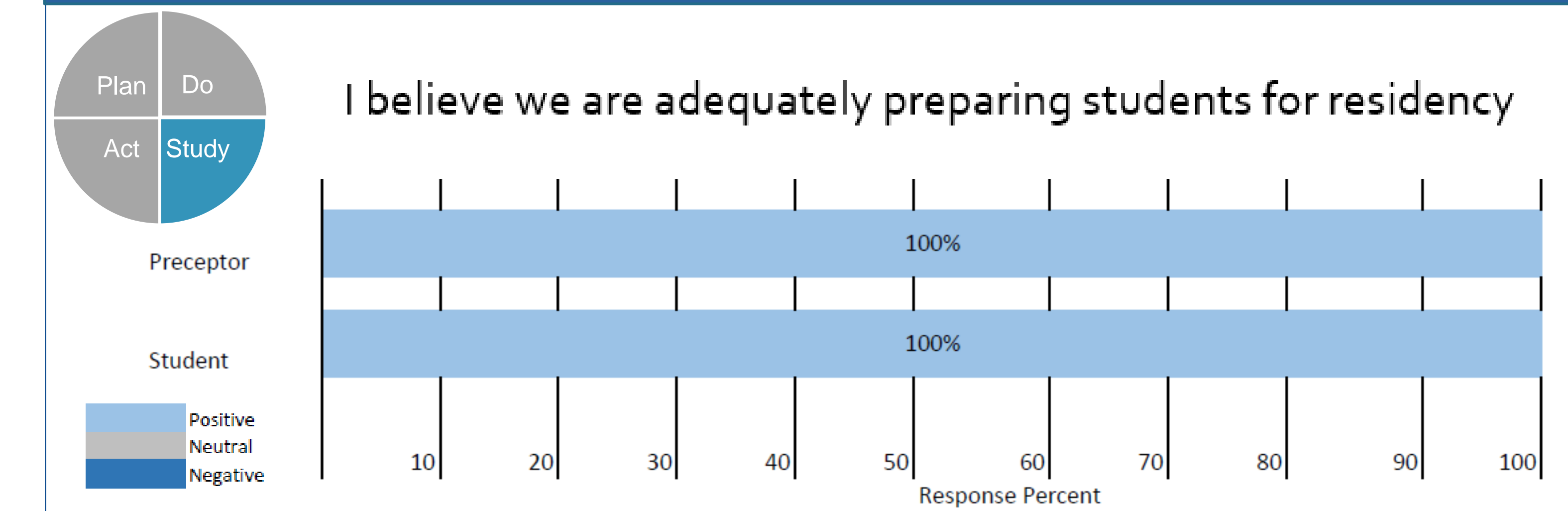
## METHODOLOGY



## INTERVENTION



## RESULTS



## NEXT STEPS



## CONCLUSIONS

This project has elevated the APPE rotation through optimization of the learning experience and creation of rotation resources

The scope of this project was very broad

- Incomplete PDSA cycle at time of this presentation

## REFERENCES

1. Assemi M, DiVall MV, Lee K, Sy E, O'Sullivan T. Quality Assurance and Improvement Practices of Experiential Education Programs in Schools of Pharmacy. *Am J Pharm Educ.* 2019;83(3). doi:10.5688/ajpe6582
2. Danielson J, Besinque KH, Clarke C, et al. Essential Elements for Core Required Advanced Pharmacy Practice Experiences. *American Journal of Pharmaceutical Education.* 2019;83(4):6865. doi:10.5688/ajpe6865
3. O'Sullivan TA, Cox CD, Darbishire P, et al. The Status and Adequacy of Preceptor Orientation and Development Programs in US Pharmacy Schools. *American Journal of Pharmaceutical Education.* 2020;84(2):258-268. doi:10.5688/ajpe7540
4. O'Sullivan TA, Sy E. A Qualitative Study Identifying Key Components to Standardize Across Inpatient General Medicine Advanced Pharmacy Practice Experiences. *American Journal of Pharmaceutical Education.* 2018;82(2):6215. doi:10.5688/ajpe6215
5. Standards2016FINAL.pdf. <https://www.acpe-accredit.org/pdf/Standards2016FINAL.pdf>