


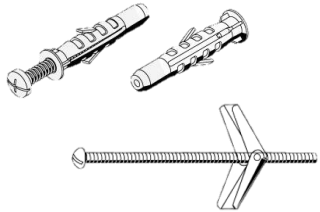
Installation Instructions for Vertical Blind

In order to have an accurate installation it is necessary to follow these simple steps.

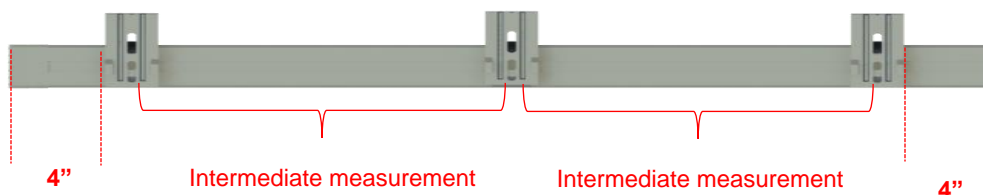
1. Tools needed

Marker or pencil, measuring tape, screwdriver and screws (chose the best one for the job).



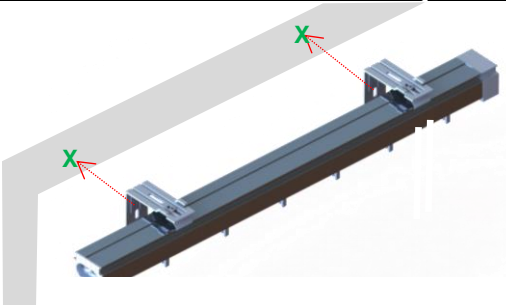
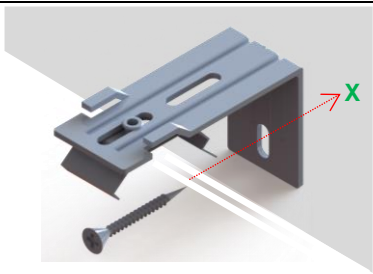
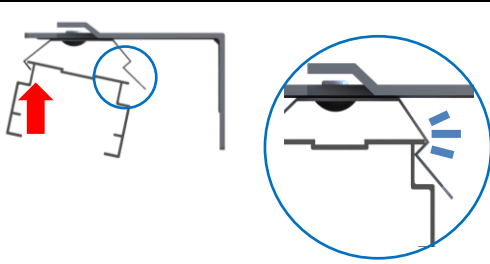
Screws	Sheetrock screws Flat or Phillips head screw 1 1/2" (included)	
Alternative screws	These screws are used on concrete and hard surfaces (screws not included)	

2. Bracket Installation *(Before installing Brackets confirm with the chart below to see how many you will need per blind.)*



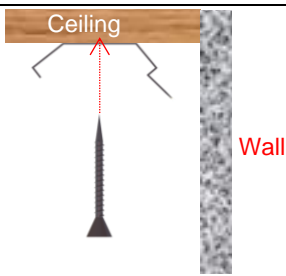
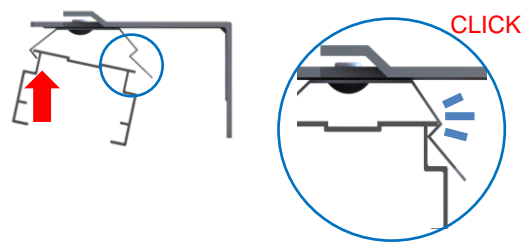
Support amount			
Width in inches		Support amount	Intermediate measurement
Minimum	Maximum		
8	55	2	4- 48
56	79	3	4-36
79	103	4	4-32
103	127	5	4-30
127	150	6	4- 29
150	174	7	4-28
174	197	8	4 - 27

Wall Installation

<p>1. With pencil mark were you will be marking the holes. for the installation of the brackets</p> <p><i>Should be 4" from each end of the rail.</i></p>	
<p>Placing the brackets in the wall</p> <p>2. With the drill, make the holes in the wall, then secure the brackets with the screws.</p>	
<p>Placing the rail on the supports</p> <p>1. 3. Once the brackets have been positioned, attach the rail to the brackets. Fit the front of the rail and then push up on the back. Once you hear a CLICK, you're finished.</p>	

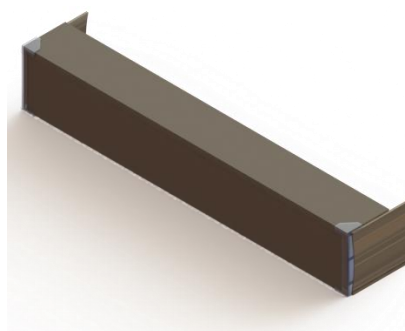
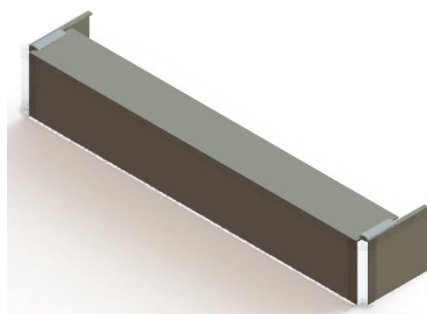
NOTE: For ceiling or in frame installations, it's recommended to install the valance with its respective sides first (unless an inside mount, then leave the sides off).

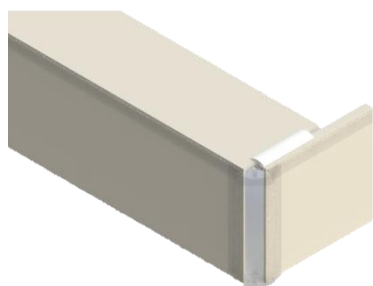
Ceiling or inside mount installation

<ol style="list-style-type: none">2. With a pencil, mark the holes where the supports are going to go. <i>Should be 4" from each end of the rail.</i>3. With the drill, make the holes in the ceiling, then secure the brackets with the screws.	
<p>Placing the rail on the brackets</p> <ol style="list-style-type: none">4. Once the brackets have been positioned, attach the rail to the brackets. Fit the front of the rail and then push up on the back. Once you hear a CLICK, you're finished.	

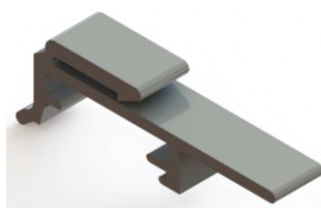
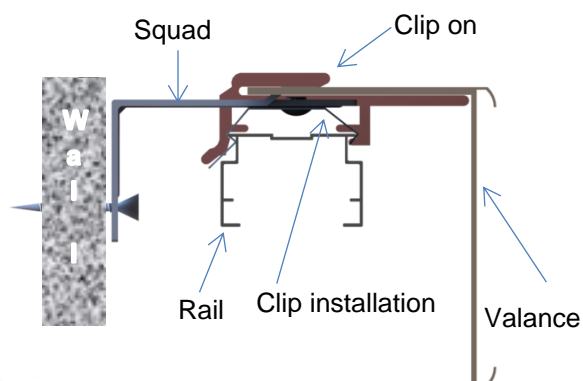
NOTE: For ceiling or in frame installations, it's recommended to install the valance with its respective sides first (unless an inside mount, then leave the sides off).

3. Valance installation (*This procedure applies to square Valance or round Valance*)





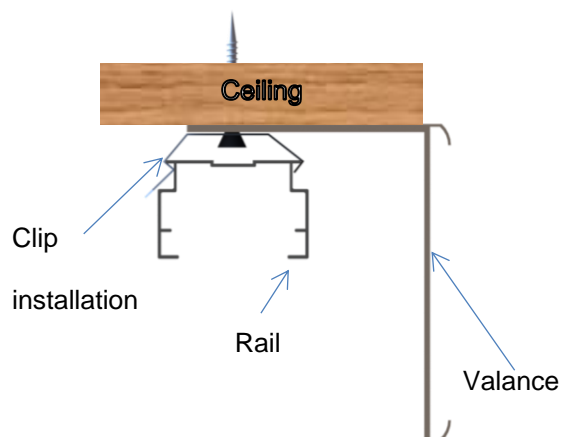
Valance installation to wall



Clip on

To install the valance on a wall mount, you will need a plastic clip. Hook the clip to the aluminum rail, then slide the top of the valance into the clip until it is fully secured.

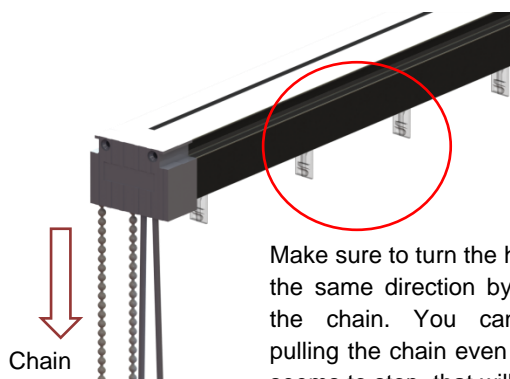
Valance installation to ceiling or inside mount



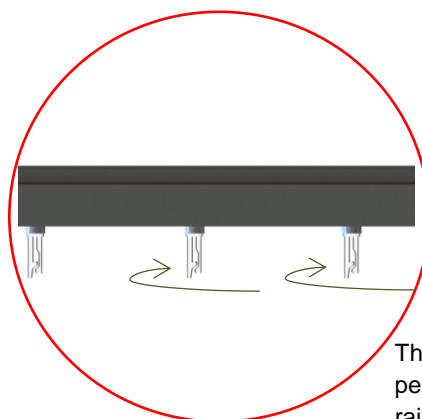
For this type of installation install the mounting bracket through the valance. Make sure the slats do not touch the valance

4. Orientation of transparent hooks

Once the rails have been installed, orient the hooks from which the slats will hang. Make sure all hooks are facing the same direction.



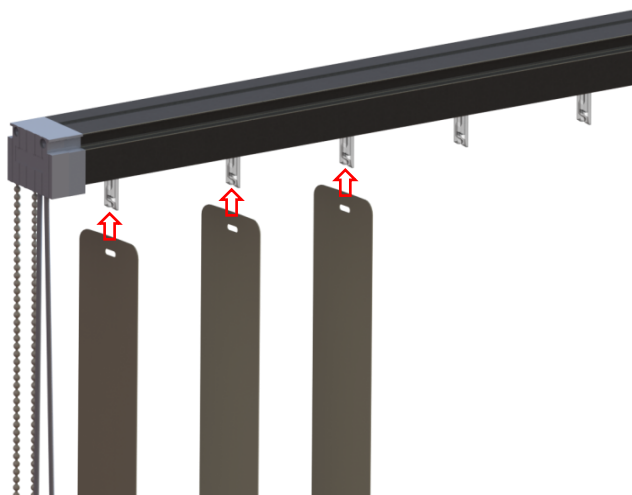
Make sure to turn the hooks in the same direction by pulling the chain. You can keep pulling the chain even when it seems to stop, that will ensure all of the hooks are aligned with each other.



The hooks must be perpendicular to the rail.

5. Placing Slats

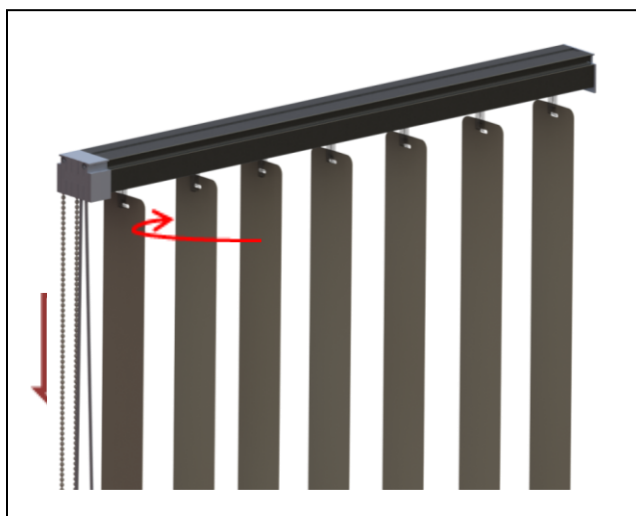
With all the hooks oriented in the same position, insert the slats one by one in each hook, so that they are perpendicular to the rail.



6. Blind Control

NOTE: When opening and closing the blind, always do so with the slats perpendicular to the rail, to prevent damage to the slats and ensure the correct operation of the blind.

With Cord



Pull the front of the chain to turn the slats in one direction, or the back to turn them in the opposite direction.

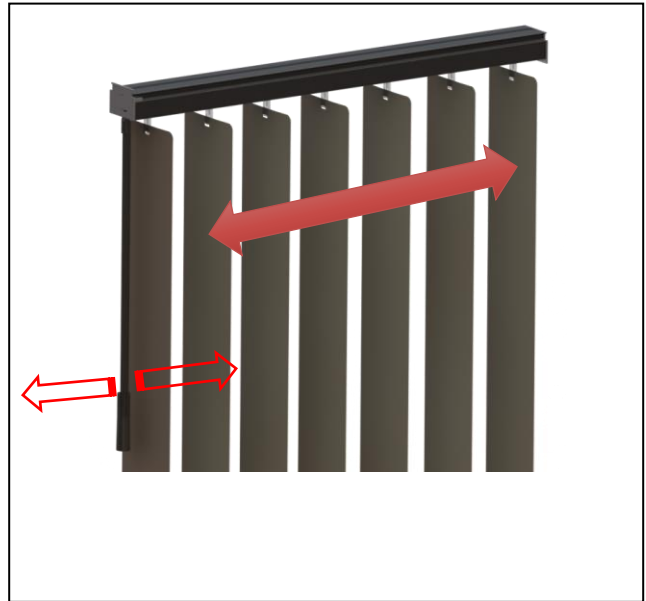


Pull the front of the cord to slide the slats one way, or the rear part to move it in the opposite direction.

With Wand



Twist the wand to turn the slats, and twist it the other way to turn them in the opposite direction.



To move the slats horizontally, simply pull the wand one way or the other.



When opening and closing the blind, always do so with the slats perpendicular to the rails to prevent damage to the slats and ensure the correct operation of the blind.

7. Maintenance

Slats should be cleaned periodically, with a duster or vacuum to remove dust.



If slats contain stains, you can use a dampened cloth (use only water).

Start at the top and work your way to the bottom. Be careful not to pull off the slats.

