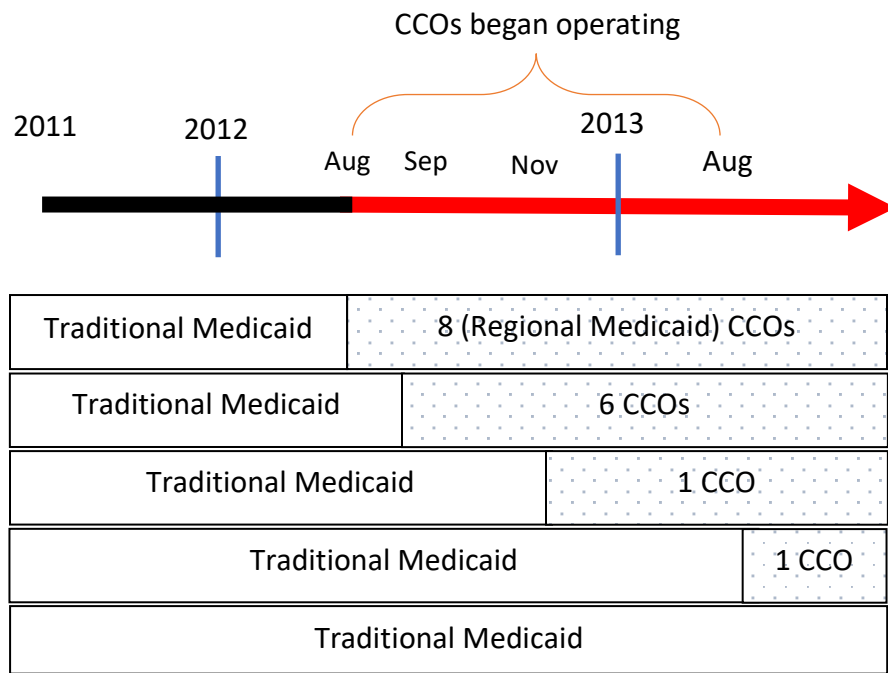
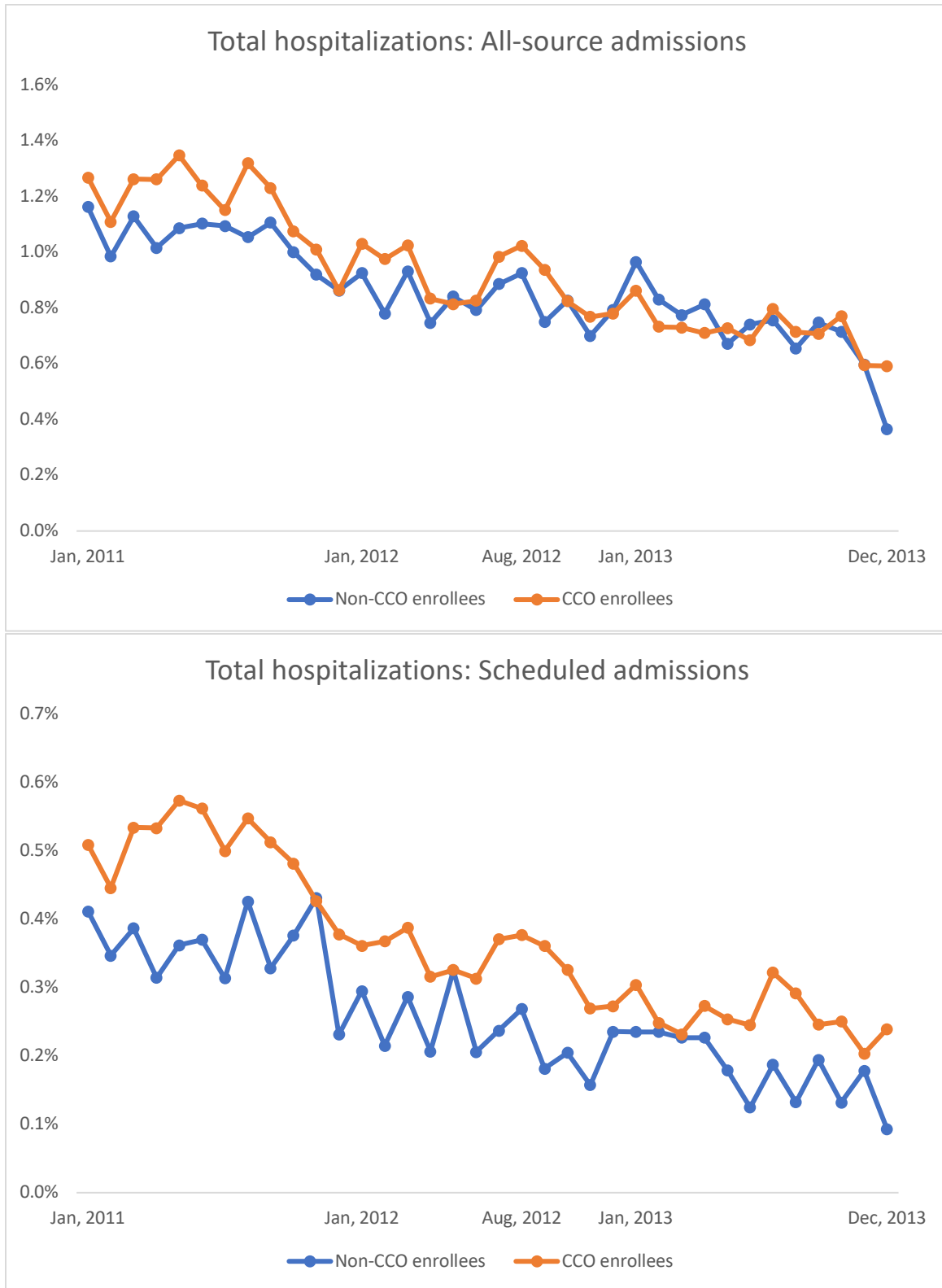


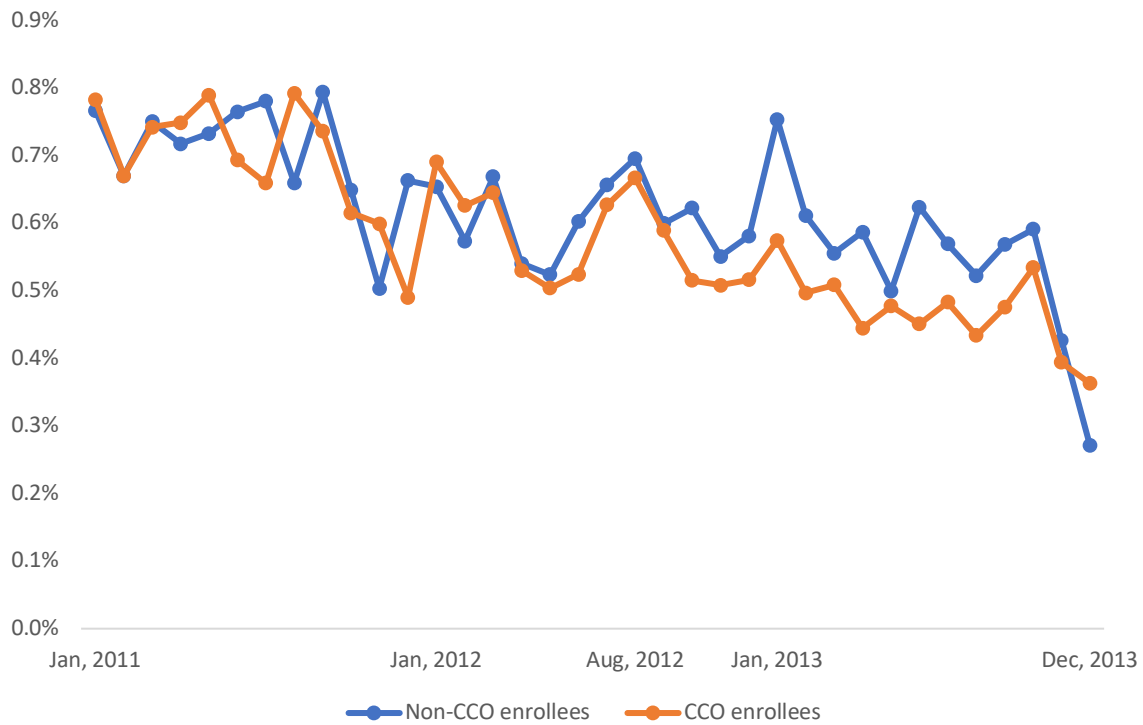
eAppendix Figure 1. Timeline of CCO Implementation



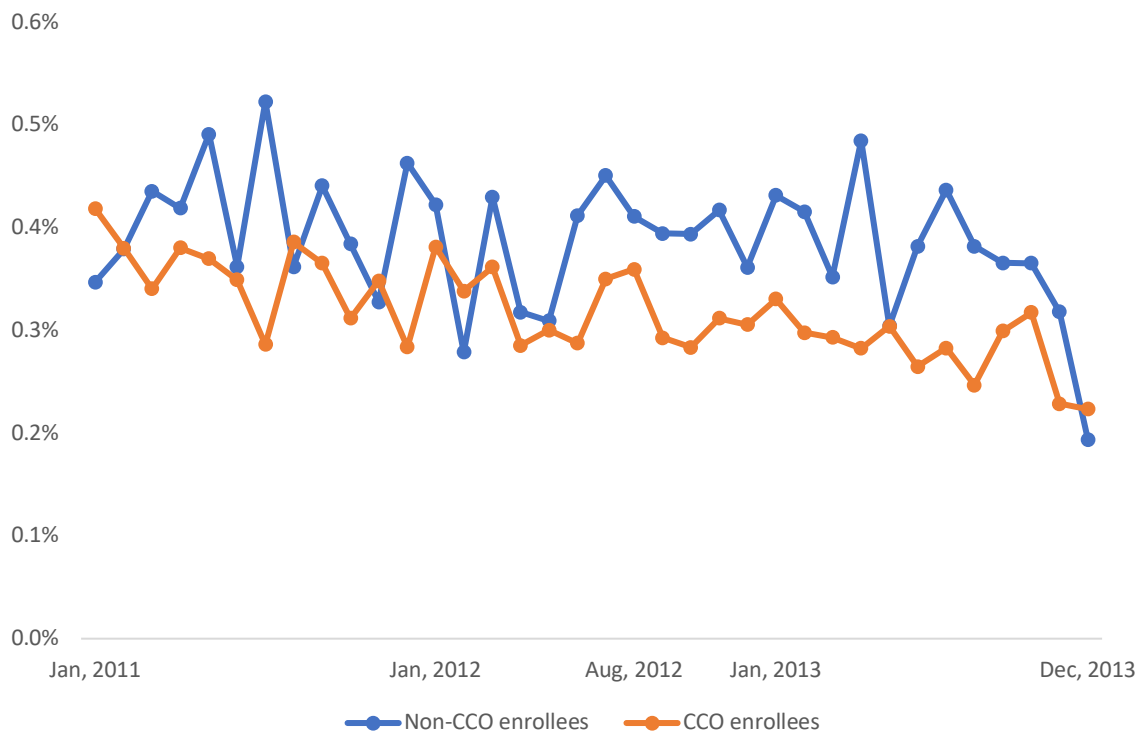
eAppendix Figure 2. Trends in the Person-Month Probability of Hospital Admissions by Source



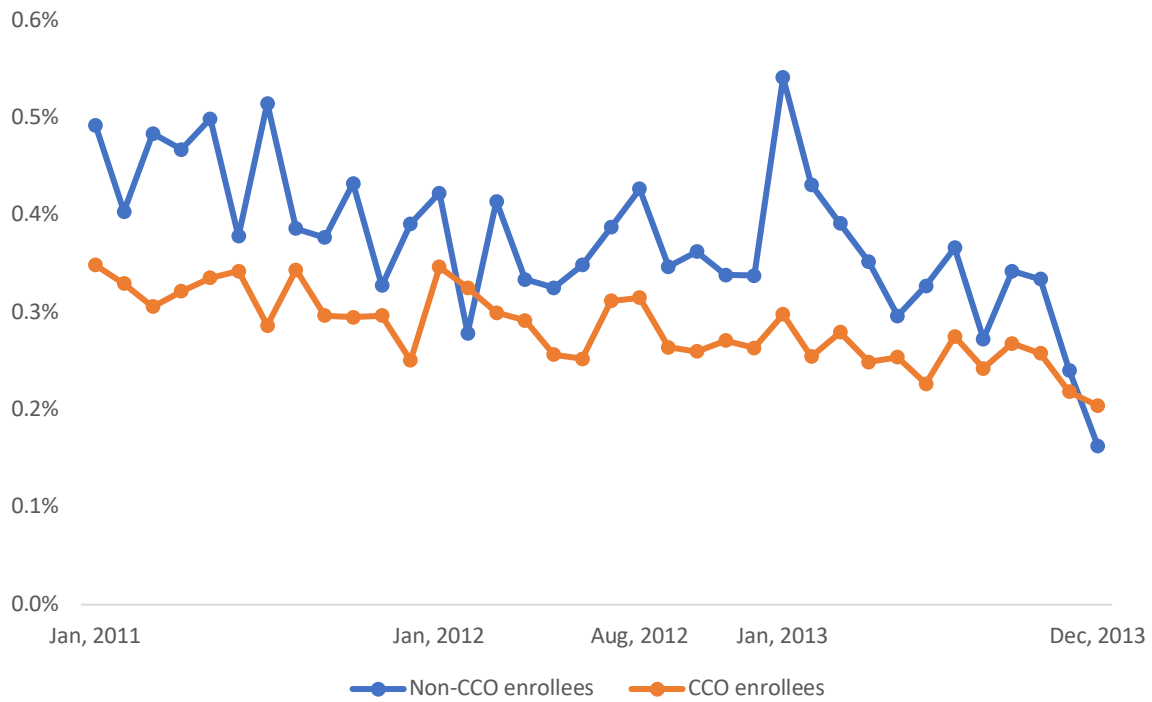
Total hospitalizations: Unscheduled admissions



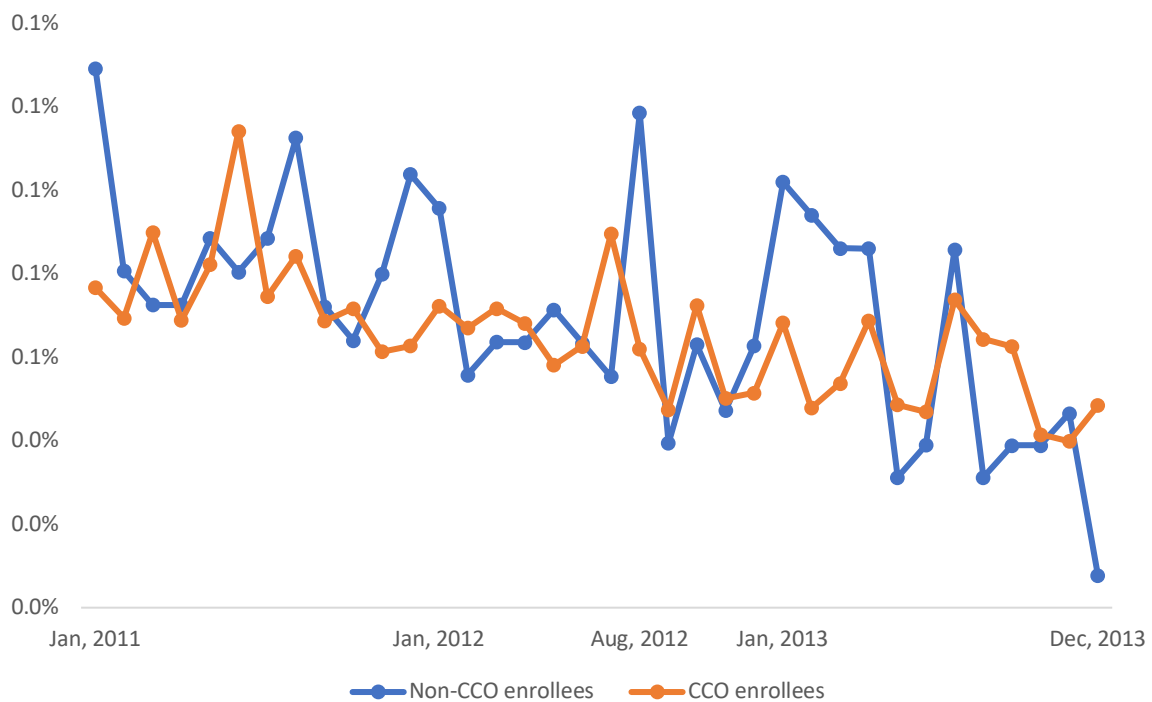
Total hospitalizations: Admissions through ED



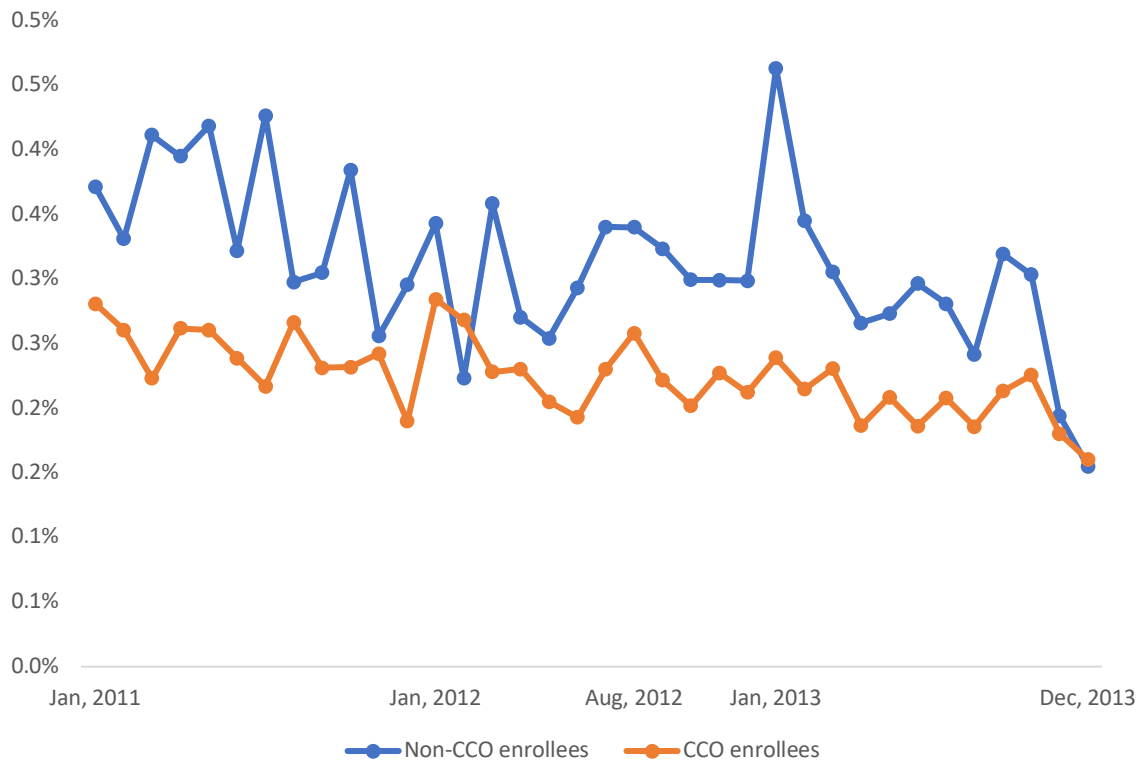
Preventable hospitalizations: All-source admissions



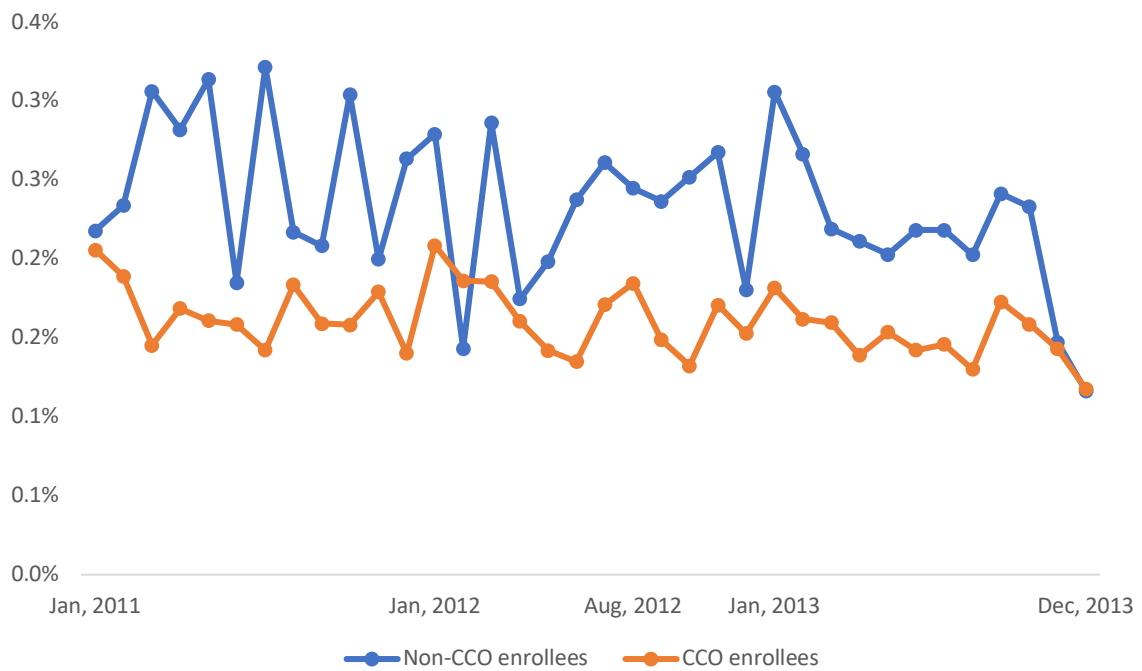
Preventable hospitalizations: Scheduled admissions



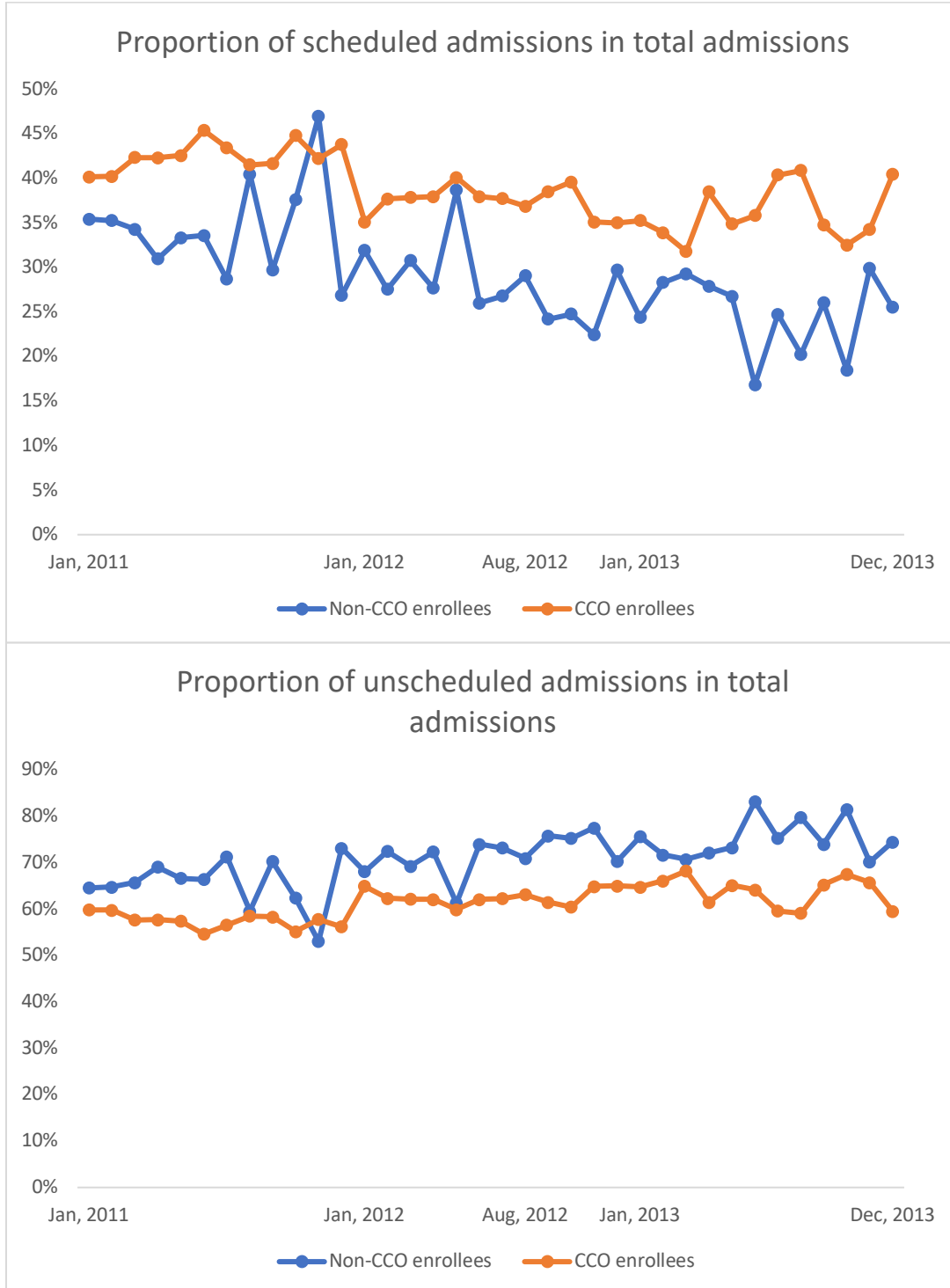
Preventable hospitalizations: Unscheduled admissions



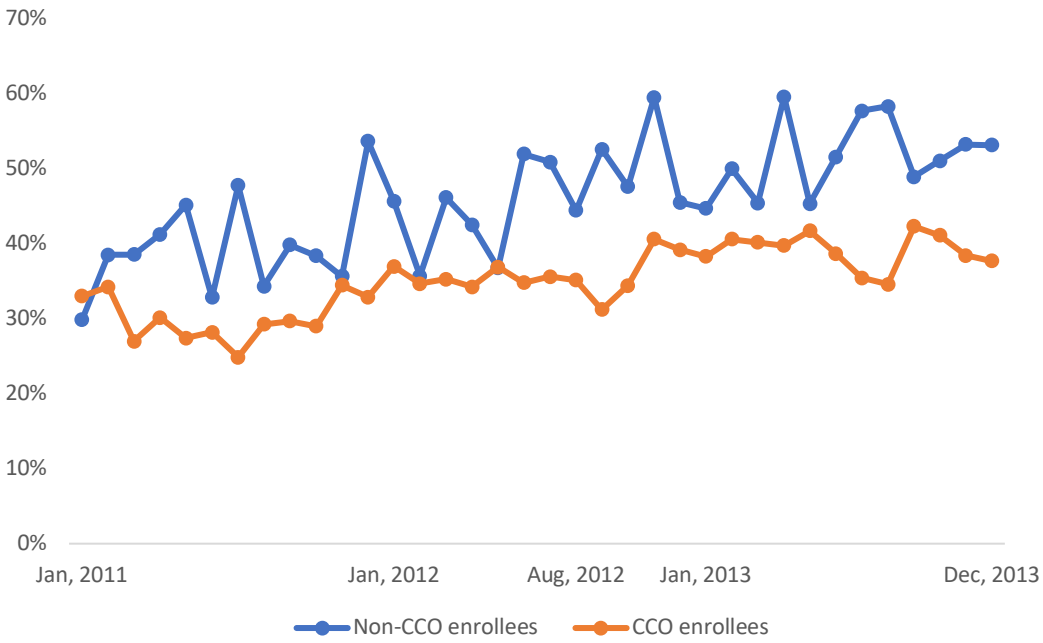
Preventable hospitalizations: Admissions through ED



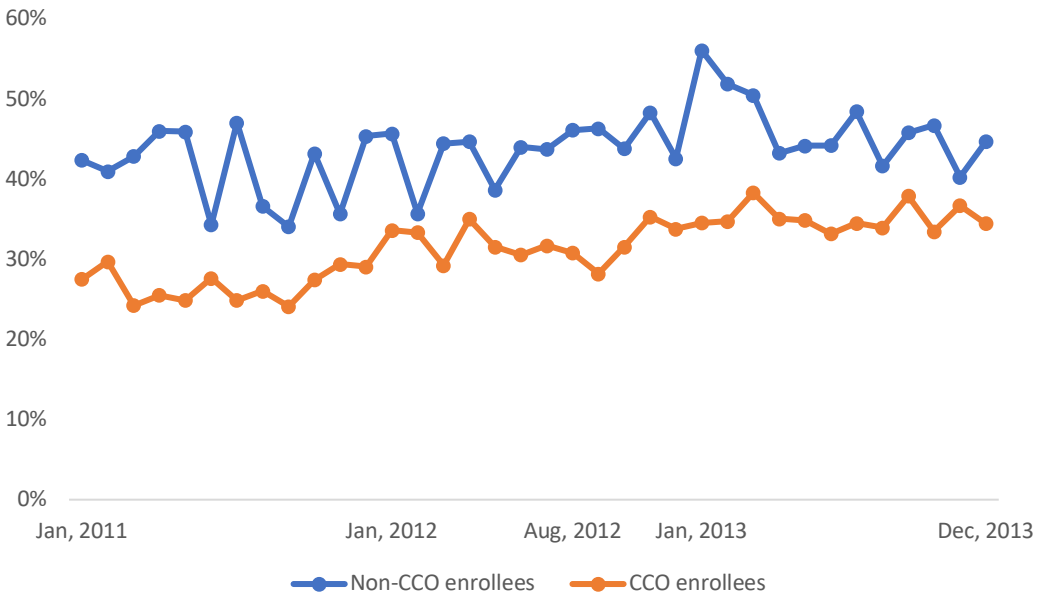
eAppendix Figure 3. Trends in the Proportion of Admissions by Source



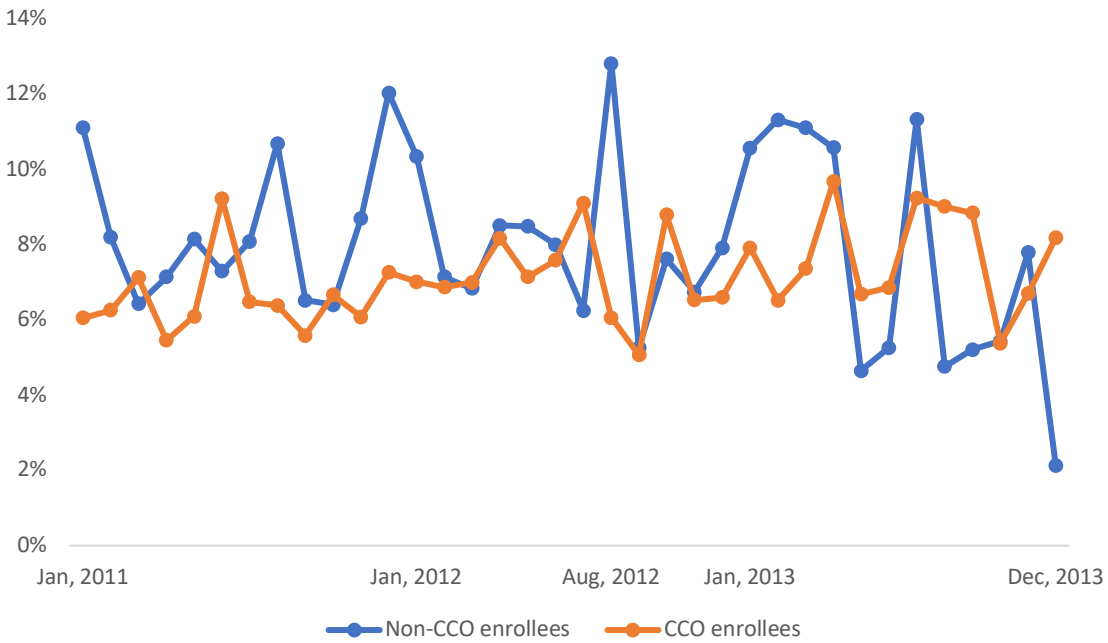
Proportion of admissions through EDs in total admissions



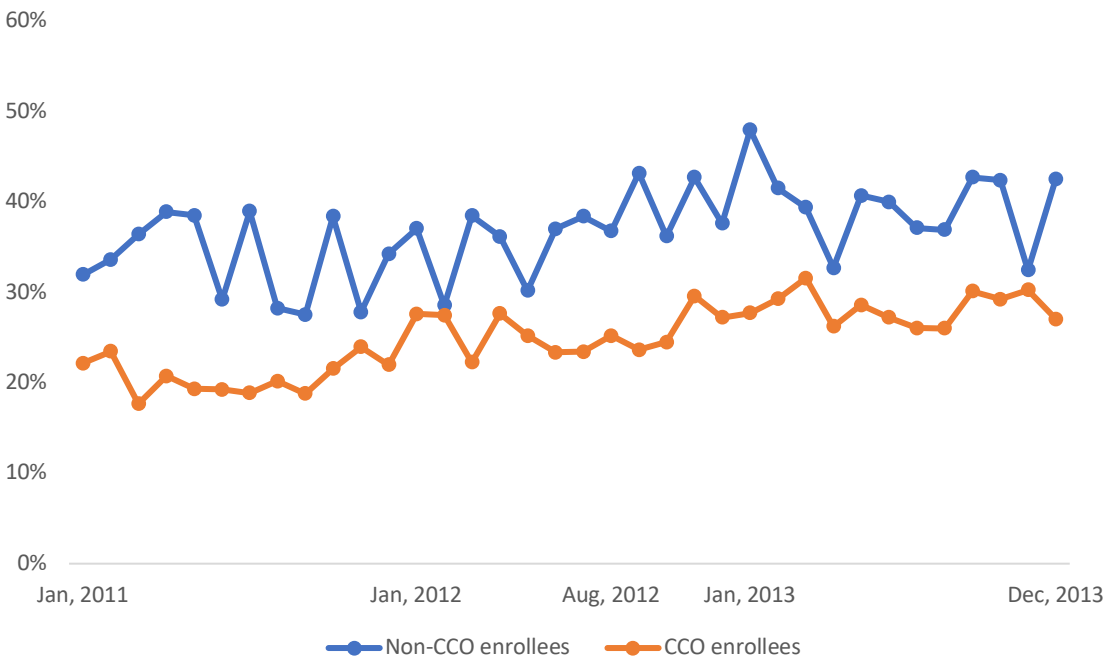
Proportion of preventable admissions in total admissions



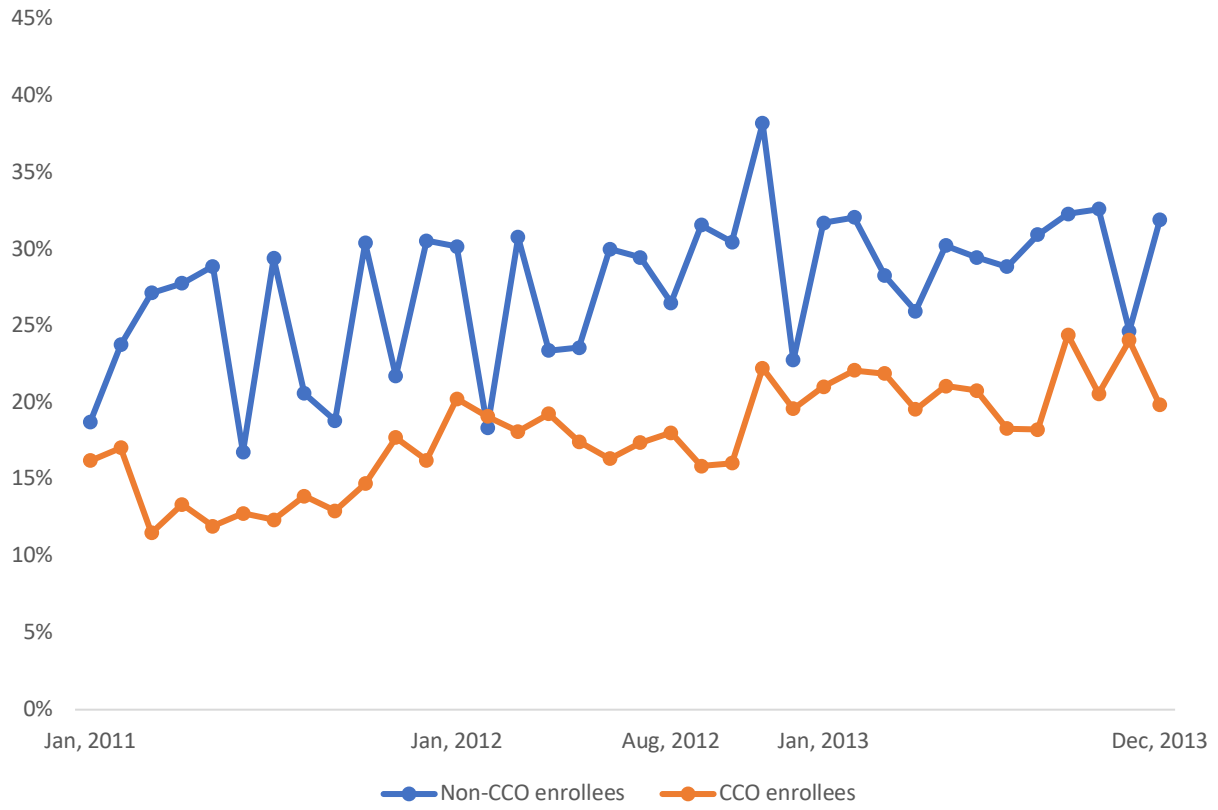
Proportion of preventable scheduled admissions in total admissions



Proportion of preventable unscheduled admissions in total admissions



Proportion of preventable admissions through ED in total admissions



eAppendix Table 1. Effects of CCO on hospitalization: OLS coefficients ($n = 2,705,543$)

| Variable | Total hospitalizations | | | | Preventable hospitalizations (PQI) | | | |
|-------------------------|---|---------------------|-------------|---------------------------|---|---------------------|-------------|---------------------------|
| | All sources (scheduled + unscheduled) | By admission source | | Unscheduled through ED | All sources (scheduled + unscheduled) | By admission source | | Unscheduled through ED |
| | | Scheduled | Unscheduled | | | Scheduled | Unscheduled | |
| <i>Main regressors</i> | | | | | | | | |
| CCO enrollment×Post-CCO | 0.0002 | 0.0007* | -0.0007 | -0.0003 | -0.0009* | -0.0002 | -0.0008* | -0.0005 |
| | (0.0006) | (0.0003) | (0.0005) | (0.0004) | (0.0004) | (0.0002) | (0.0003) | (0.0003) |
| CCO enrollment | 0.0003 | 0.0012*** | -0.0010* | -0.0011** | -0.0019*** | -0.0003* | -0.0017*** | -0.0013*** |
| | (0.0005) | (0.0002) | (0.0004) | (0.0003) | (0.0004) | (0.0001) | (0.0003) | (0.0003) |
| Post-CCO | -0.0010 | -0.0010*** | 0.0001 | 0.0003 | 0.0008* | 0.0002 | 0.0007* | 0.0004 |
| | (0.0006) | (0.0003) | (0.0005) | (0.0004) | (0.0003) | (0.0002) | (0.0003) | (0.0003) |
| <i>Covariates</i> | | | | | | | | |
| Pregnant | 0.0788*** | 0.0427*** | 0.0370*** | 0.0093*** | 0.0078*** | 0.0038*** | 0.0043*** | 0.0010*** |
| | (0.0006) | (0.0005) | (0.0005) | (0.0003) | (0.0003) | (0.0002) | (0.0002) | (0.0001) |
| Age | 0.0002*** | 0.0001*** | 0.0002*** | 0.0001*** | 0.0002*** | 0.0000*** | 0.0001*** | 0.0001*** |
| | (0.0000) | (0.0000) | (0.0000) | (0.0000) | (0.0000) | (0.0000) | (0.0000) | (0.0000) |
| <i>Race/ethnicity</i> | | | | | | | | |
| Hispanic | -0.0078*** | -0.0028*** | -0.0051*** | -0.0031*** | -0.0028*** | -0.0006*** | -0.0023*** | -0.0017*** |
| | (0.0002) | (0.0001) | (0.0002) | (0.0001) | (0.0001) | (0.0000) | (0.0001) | (0.0001) |
| Black | 0.0009 | 0.0000 | 0.0008* | 0.0004 | 0.0007* | 0.0001 | 0.0007* | 0.0007* |
| | (0.0005) | (0.0002) | (0.0004) | (0.0003) | (0.0004) | (0.0001) | (0.0003) | (0.0003) |
| Asian and NHPI | -0.0042*** | -0.0015*** | -0.0028*** | -0.0018*** | -0.0016*** | -0.0004*** | -0.0012*** | -0.0008** |
| | (0.0004) | (0.0002) | (0.0004) | (0.0003) | (0.0003) | (0.0001) | (0.0003) | (0.0003) |
| American Indian | 0.0022* | -0.0007** | 0.0030*** | 0.0014 | 0.0017* | 0.0003 | 0.0015* | 0.0011 |
| | (0.0009) | (0.0003) | (0.0008) | (0.0007) | (0.0008) | (0.0001) | (0.0007) | (0.0007) |
| Other Race | 0.0172*** | 0.0072*** | 0.0099*** | 0.0060*** | 0.0032*** | 0.0007* | 0.0023*** | 0.0024*** |
| | (0.0009) | (0.0008) | (0.0010) | (0.0008) | (0.0007) | (0.0003) | (0.0006) | (0.0006) |
| <i>Rurality</i> | | | | | | | | |
| Large rural | 0.0002 | 0.0005*** | -0.0004 | -0.0005** | -0.0002 | 0.0001 | -0.0002 | 0.0000 |
| | (0.0002) | (0.0001) | (0.0002) | (0.0002) | (0.0002) | (0.0001) | (0.0002) | (0.0001) |
| Small rural | -0.0004 | -0.0002 | -0.0003 | -0.0007* | -0.0002 | 0.0000 | -0.0002 | -0.0002 |
| | (0.0005) | (0.0002) | (0.0004) | (0.0003) | (0.0004) | (0.0001) | (0.0003) | (0.0003) |
| Linear time trend | 0.0001** | 0.0001*** | 0.0000 | -0.0000 | -0.0001*** | -0.0000 | -0.0001*** | -0.0000* |
| | (0.0000) | (0.0000) | (0.0000) | (0.0000) | (0.0000) | (0.0000) | (0.0000) | (0.0000) |
| CCO enrollment X Time | -0.0001* | -0.0001*** | 0.0000 | 0.0000 | 0.0001** | 0.0000 | 0.0000** | 0.0000* |

| | | | | | | | | |
|----------|----------|------------|----------|----------|----------|-----------|----------|----------|
| | (0.0000) | (0.0000) | (0.0000) | (0.0000) | (0.0000) | (0.0000) | (0.0000) | (0.0000) |
| Constant | -0.0003 | -0.0013*** | 0.0011* | 0.0006 | 0.0004 | -0.0003** | 0.0007 | 0.0002 |
| | (0.0006) | (0.0003) | (0.0005) | (0.0004) | (0.0004) | (0.0001) | (0.0004) | (0.0003) |

Notes. Standard errors in parentheses are corrected for clustering on individuals.

* $p < .05$; ** $p < .01$; *** $p < .001$.

eAppendix Table 2. Effects of CCO on hospitalizations: Coefficients from fixed-effects linear probability model ($n = 2,705,543$)

| Variable | Total hospitalizations | | | | Preventable hospitalizations (PQI) | | | |
|-------------------------|---|--------------------------|-------------------------|---------------------------|---|-------------------------|-------------------------|---------------------------|
| | All sources (scheduled + unscheduled) | By admission source | | Unscheduled through ED | All sources (scheduled + unscheduled) | By admission source | | Unscheduled through ED |
| | | Scheduled | Unscheduled | | | Scheduled | Unscheduled | |
| <i>Main regressors</i> | | | | | | | | |
| CCO enrollment×Post-CCO | 0.00005 (0.00062) | 0.00034 (0.00034) | -0.00043 (0.00050) | -0.00040 (0.00039) | -0.00096* (0.00037) | -0.00028 (0.00017) | -0.00079* (0.00034) | -0.00050 (0.00029) |
| Post-CCO | -0.00101 (0.00056) | -0.00111*** (0.00031) | 0.00017 (0.00046) | 0.00033 (0.00035) | 0.00083* (0.00035) | 0.00015 (0.00016) | 0.00079* (0.00031) | 0.00046 (0.00027) |
| <i>Covariates</i> | | | | | | | | |
| Pregnant | 0.08314*** (0.00060) | 0.04499*** (0.00052) | 0.03910*** (0.00052) | 0.01023*** (0.00032) | 0.00910*** (0.00030) | 0.00412*** (0.00018) | 0.00530*** (0.00024) | 0.00164*** (0.00015) |
| Age | 0.00006 (0.00021) | 0.00013 (0.00013) | -0.00005 (0.00016) | 0.00002 (0.00012) | 0.00013 (0.00011) | 0.00016** (0.00005) | 0.00001 (0.00010) | 0.00002 (0.00009) |
| <i>Rurality</i> | | | | | | | | |
| Large rural | 0.00018 (0.00100) | 0.00045 (0.00059) | -0.00033 (0.00085) | -0.00035 (0.00061) | -0.00111 (0.00059) | -0.00034 (0.00027) | -0.00084 (0.00054) | -0.00007 (0.00042) |
| Small rural | 0.00096 (0.00127) | 0.00045 (0.00082) | 0.00034 (0.00107) | -0.00037 (0.00075) | -0.00097 (0.00069) | -0.00023 (0.00031) | -0.00085 (0.00062) | -0.00055 (0.00048) |
| Linear time trend | 0.00012*** (0.00003) | 0.00007*** (0.00002) | 0.00004 (0.00003) | 0.00001 (0.00002) | -0.00005* (0.00002) | -0.00002* (0.00001) | -0.00003 (0.00002) | -0.00002 (0.00001) |
| CCO enrollment X Time | -0.00008* (0.00003) | -0.00005** (0.00002) | -0.00002 (0.00003) | -0.00001 (0.00002) | 0.00005** (0.00002) | 0.00002 (0.00001) | 0.00004* (0.00002) | 0.00002 (0.00001) |
| Constant | 0.00226 (0.00536) | -0.00291 (0.00328) | 0.00482 (0.00423) | 0.00209 (0.00316) | -0.00091 (0.00296) | -0.00361* (0.00142) | 0.00193 (0.00265) | 0.00102 (0.00225) |

Notes. Standard errors in parentheses are corrected for clustering on individuals.

* $p < .05$; ** $p < .01$; *** $p < .001$.