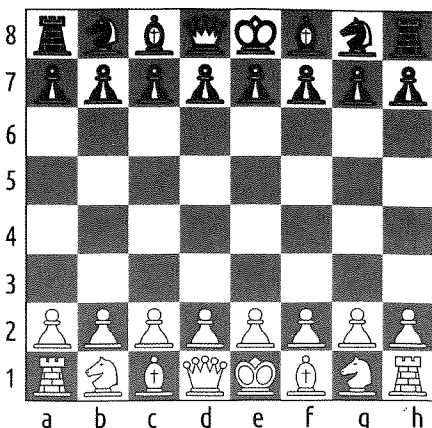


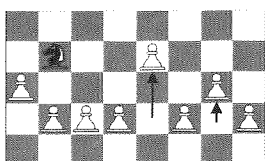
CHESS QUICK START: THE BASICS



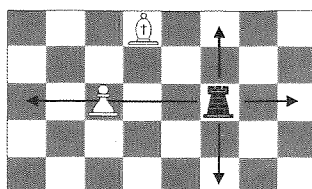
The letters and numbers around the chess board are referred to as algebraic notation and are used to mark the positions of the pieces. That bottom right Rook is at h1.

Objective: The goal in chess is to attack the opponent's King in such a way that the King can not escape. If the King can escape the King was in "Check." If the King cannot escape, it's "Checkmate," and the game is over. The white pieces always move first.

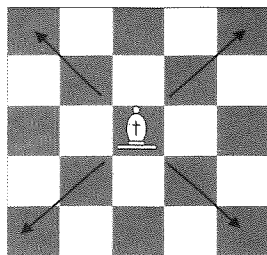
Setup: Bottom right corner is white, Queen is on her color



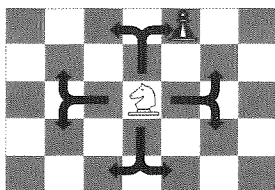
PAWN'S can only move forward one square at a time, and attack pieces that are diagonal to them. However, on the first move a pawn has the option of moving two squares. If a pawn makes it all the way across the board it can become any other piece (except the King).



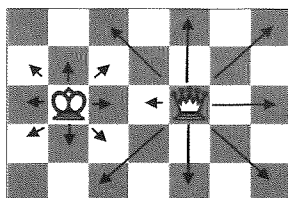
ROOK'S move and attack on horizontal and vertical lines. Rook's are considered a major piece and are more valuable than knights and bishops. Try to hold on to these until the end game.



BISHOP'S move and attack anything on its diagonal lines.



KNIGHT'S move in L shapes, they attack pieces located at the end of the L shape.



KING & QUEEN

They both move in any direction, but the King can only move one space. The Queen can move across the board.



Castling: If the king and rook have not moved the king can "castle." This is done by moving the King two squares and putting the rook on other side of the king. The King must never be in check while moving.

Thank you for purchasing a Chess Armory chess set. Visit our website for more tutorials and information.



FOR MORE INFORMATION
WWW.CHESSARMORY.COM