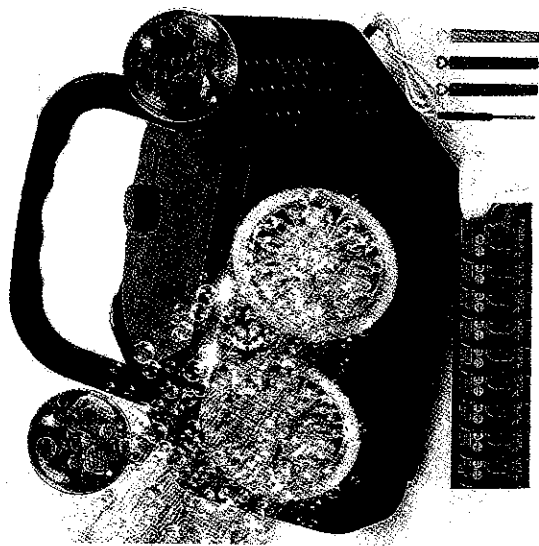
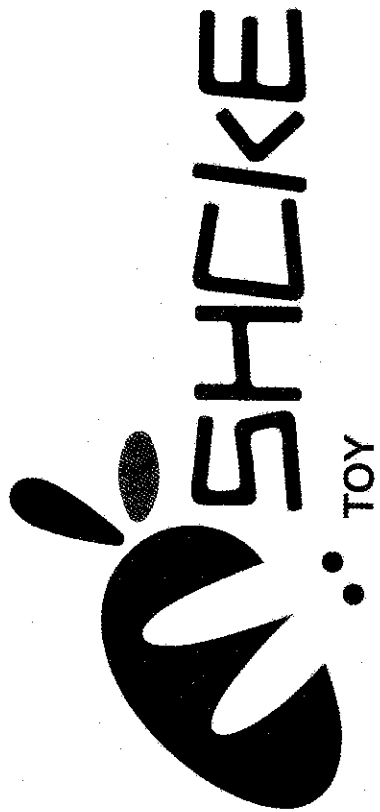


Bubble Machine User Manual



Here is our contact email:

shckeservice@hotmail.com

1. About Our Brand:

SHCKE is a brand full of fun and innovation. Since 2015, SHCKE has been committed to exploring the true fun of childhood and building a bridge between childlike innocence and innovation with the magical power of bubbles. As a pioneer focusing on children's entertainment, we have been deeply involved in the industry for 9 years and continue to reshape children's toys with science and creativity - so that each bubble not only carries childlike fun, but also becomes a wonderful carrier to stimulate imagination and parent-child emotions.

We focus on the two-way needs of exploration in the budding period of 1-3 years old and creation in the expansion period of 3 years old and above, and build a bubble toy ecosystem covering all scenarios: from handheld bubble guns and automatic bubble machines to fantasy-shaped bubble wands and gentle bubble solutions.

From backyard games to outdoor adventures, SHCKE makes bubble magic infinite in seasons and spaces. With one-button operation, long-lasting power and refillable environmentally friendly design, the fascinating experience is at your fingertips.

Each product is carefully crafted to be safe, durable and user-friendly - designed for children and their parents to explore, create and communicate through simple and unlimited bubble fun.

2. Product Overview:

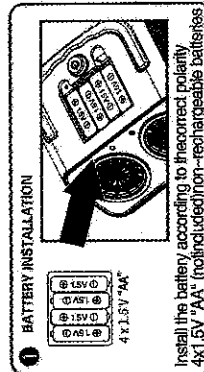
The automatic bubble machine is a fun and easy-to-use device that can create a large number of colorful bubbles, bringing joy and a festive atmosphere to various occasions such as parties, outdoor activities, and family gatherings.

3. Preparation:

Dual power supply modes:

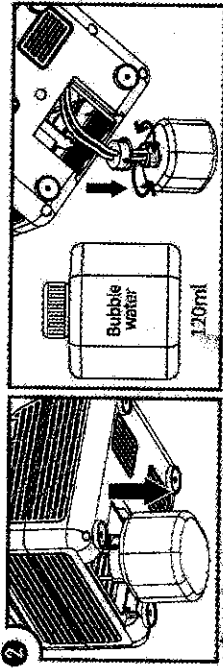
A. **Insert Batteries:** Take out the screws and open the battery compartment cover, insert 4 x 1.5V AA batteries (not included) in their correct position, close the battery cover and tighten the screws to make sure that the batteries don't get wet.

B. **USB Charging:** USB power connection socket or Power Bank. This power supply mode can save a lot of money on purchasing batteries.

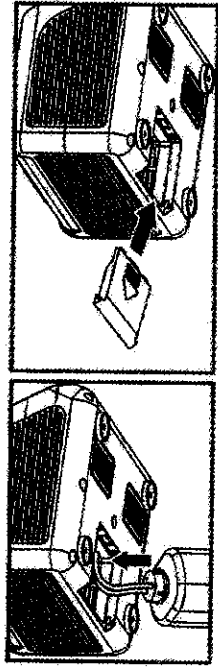


Load the bubble solution:

A. Pour bubble solution: Open the back cover and take out a bottle of bubble water. Twist off the bottle cap, adjust the bubble liquid bottle, align the mouth of the bottle with the bubble bottle storage position. Put the pipes into the bubble bottle, hold the lid firmly with one hand, and rotate the bottle counterclockwise with the other hand to tighten the bottle cap. Then place the bubble bottle vertically into the bubble machine. After fixing the bubble bottle, close the lid.



1. Open the back cover and take out a bottle of water

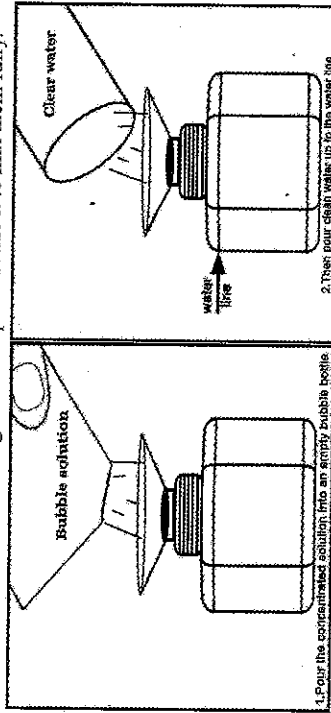


4. After filling the bubble bottle, close the lid

3. Bubble water bottle into bubble machine

B. Mixing bubble liquid:

Put 3 packs of concentrated bubble solution upside down into the empty bubble bottle, then pour clean water up to the water line, not too high or too low, as this will affect the production of bubbles. Tighten the cap and shake it to mix them fully.

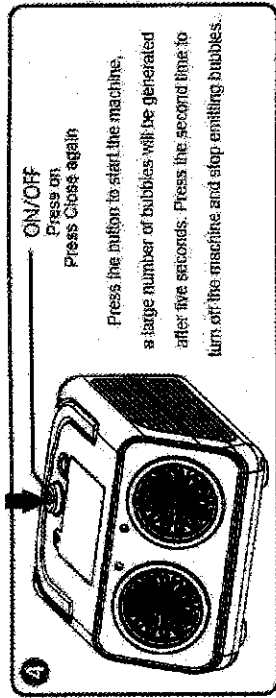


1. Pour the concentrated solution into an empty bubble bottle

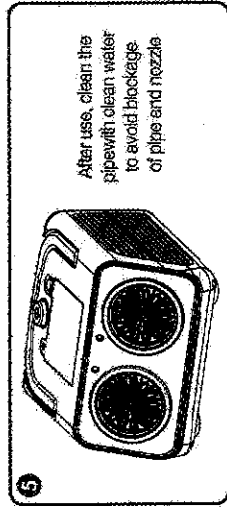
2. Then pour clean water up to the water line

Switch: Press the button to start the machine, a large number of bubbles will be generated after five seconds. Press the second time to turn off the machine and stop

emitting bubbles.



Maintenance: After using the bubble machine, please empty the excess bubble liquid, wipe the body clean, do not immerse the bubble machine in water. Remove the batteries from the battery compartment.



4. Safety Precautions:

- This toy is intended for children aged 3 years and older.
- Adult supervision is recommended during play to ensure safety.
- Do not immerse the bubble machine in water or expose it to rain.
- In case of contact with eyes, rinse immediately with plenty of water. If irritation persists, seek medical attention.
- Surfaces impacted by bubbles can become slippery. Please avoid using this product on smooth ground and pay attention to avoid slipping.
- The bubble liquid that comes with this product has passed strict product testing and certification, is safe and non-toxic, and can be safely used. However, those who experienced previous allergic reaction to bubble liquids should use it with caution.
- If the bubble machine becomes abnormal or no longer works, do not disassemble or repair it yourself and consult a professional or the manufacturer for repair or replacement service.

5. Troubleshooting:

A. Liquid leakage during the use of the bubble machine

Reasons:

- (1) Improper operation: If the bubble machine is not used correctly according to the instructions, such as tilting, excessive shaking or jolting, it can lead to bubble solution

leakage.

- (2) Damaged bubble solution container: If the bubble solution container is damaged or not properly installed, it can result in leakage of the bubble solution.
- (3) Quality issues with the bubble solution: Unstable quality of the bubble solution, such as insufficient viscosity, can cause excessive fluidity. When bubbles are produced by the machine, the bubble solution may not adhere tightly to the nozzle and more easily leak out. Similarly, if the viscosity is too high, the bubble solution may have difficulty flowing smoothly and may clog the nozzle, leading to leakage.
- (4) Received product might be a returned item from Amazon previously used by another customer.
- (5) Insufficient lubricant in the motor causing excessive friction, resulting in hose damage and subsequent leakage of the bubble solution.

Solutions:

- (1) Please use and maintain the bubble machine correctly according to the instructions and video guidance.



- (2) Please prepare the bubble liquid correctly according to the instructions in the video.



- (3) If you receive a returned product or a product with quality problems, please contact us in time to return it for a refund or resend it.

B. The bubble machine stopped working

Reasons:

- (1) Power issues: Insufficient battery power or poor connection of the power cord can cause the bubble machine to stop working after brief usage.
- (2) Nozzle blockage: If the bubble solution being used contains impurities or there is residual bubble solution inside the machine, it can lead to nozzle blockage, preventing the bubble machine from producing bubbles and causing it to stop working.
- (3) Insufficient liquid: If the bubble machine's container does not have enough bubble solution, it cannot supply sufficient liquid for the machine to operate properly, resulting in it stopping working.
- (4) Equipment malfunction: The bubble machine itself may have faulty components or other technical issues, causing it to stop working after brief usage.

Solutions:

- (1) Start by checking the power source to ensure sufficient battery power or proper connection of the power cord. Additionally, check if the nozzle is blocked and if there is enough bubble solution. If the issue persists, it is recommended to contact the customer service team for more detailed troubleshooting guidance.
- (2) You can contact the customer service team for replacement.

C. Only one bubble fan can produce bubbles

Reasons:

- (1) **Power issues:** When the battery is low, the bubble machine will not be able to keep both bubble fans emitting bubbles at the same time.
- (2) **Length or layout issue of the hose:** If one side of the hose is too short and cannot reach the bottom of the bubble solution container, the bubble solution may not be evenly distributed to both nozzles.
- (3) **Hose blockage:** If there is a blockage in the hose of one of the nozzles, the bubble solution cannot flow properly to that side, resulting in only one side producing bubbles.
- (4) **Loose or damaged hose connections:** If the hose connections to the bubble machine or the nozzles are loose or broken, it can hinder the smooth flow of the bubble solution to the nozzles, causing one side not to produce bubbles.
- (5) **The charging cable used by the customer has a rated current lower than 2A.**

Solutions:

- (1) Replace the batteries with new ones or use a USB power connection.
- (2) Adjust the length and layout of the hose appropriately.
- (3) Clean the hose by flushing it with water after each use of the bubble machine.
- (4) Use a charging cable with a rated current of at least 2A.
- (5) If you receive a returned product or a product with quality problems, please contact us in time to return it for a refund or resend it.

D. How to clean nozzles and hoses

- (1) To clean the nozzle, you can use a soft brush dipped in water (or a damp cloth) to clean it, and then dry it with a dry cloth.
- (2) To clean the pipes, first remove the bubble bottle and the bottle cap, rinse the pipes in clean water, and then wipe the water dry with a dry cloth.

Note: Do not immerse the bubble machine in water during the whole process, only partial cleaning.



We hope the above instructions are helpful to you. Have a happy use!

6. Specifications:

Material: ABS

Power supply:

4 x AA batteries (not included)

USB power connection socket or "Power Bank"

Age Range: >3 years old

Dimensions and Weight:

Product weight: 1.73 lb / 0.788kg

Package weight: 1.76 lb / 0.8kg

Package size(L X W X H): 6.49*6.49*4.92inch / 16.5*16.5*12.5cm

Package Contents:

1 x Automatic Bubble Machine

1 x Screwdriver

1 x USB Charging cable

1 bottle Bubble Solution

1 x Funnel

3 x Bubble Wand

9 x Bubble Solution Refill (30ml solution+90ml water+stir=120ml bubble)

Batch Number:

Model: 553

SN: 20250220553

Date: 02/20/2025

Manufacturer:

Shantou Jianhui Toys Industry Co., Ltd.

East Factory of Xinxinghua Road,

Guanshan City, Chenghua City.

Chenghai District, Shantou City, China

Importer:
LUCKY GLOBAL INC
36 S 18TH AVE BRIGHTON CO 80601 United State

WARNING: CHOKING HAZARD- Small parts. Not for children under 3 years.	PRECAUCIONES: PELIGRO DE AHOGARSE. Contiene partes pequeñas. No recomendado para niños menores de 3 años.	NOT SUITABLE FOR CHILDREN UNDER 3 YEARS DUE TO SMALL PARTS. WARNING: تحذير: خطر الاختناق بسبب الأجزاء الصغيرة. غير مناسب للأطفال أقل من 3 سنوات. country of origin: china بموجب المواصفة القياسية المعتمدة من قبل مكتب المواصفات والمقاييس العالمية Tested according to international standards
--	---	---

*** SPECIFICATIONS, COLORS AND CONTENTS
MAY VARY FROM ILLUSTRATION
MADE IN CHINA**

Battery installation precautions
1) Do not mix old and new batteries
2) Do not mix alkaline, standard
(carbon-zinc) or rechargeable
(nickel-cadmium) batteries.

MANUFACTURER: SHANTOU JIANHUI TOYS INDUSTRIAL CO., LTD
ADDRESS: EAST FACTORY BUILDING OF XINXINGHUA ROAD
GUANSHAN CHENGHUA CHENGHAI DISTRICT SHANTOU CITY CHINA 515800

