

# Hasbro's Joy for All

AGES  
5-105

B7592

Companion Pets



## CARE GUIDE

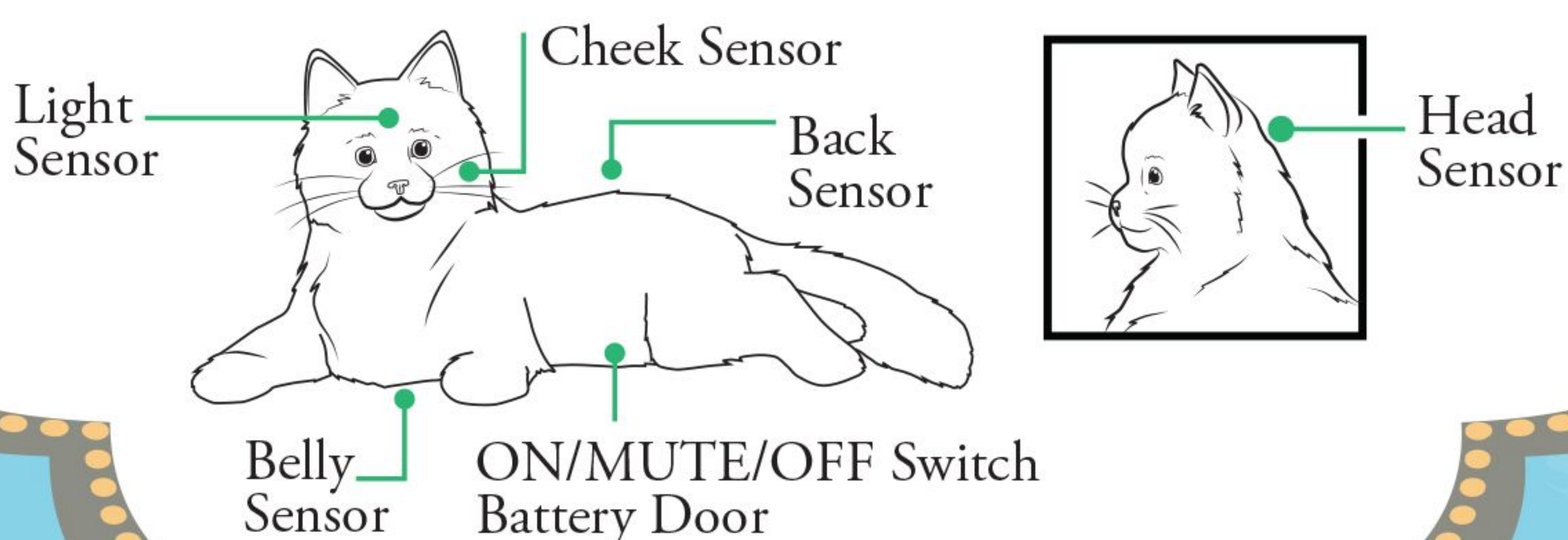
This Hasbro Joy for All™ Companion Pet cat is designed to provide a rich and pleasurable experience for you and your loved ones. We hope this cat will become a good friend that inspires spontaneous smiles, laughter, and warm memories.

The Joy for All Companion Pet cat looks, feels, sounds, and moves like a real cat. No set-up required – it is simple to use and care for. Please read this guide for information on how to enjoy this Companion Pet.

Your Companion Pet cat features state-of-the-art technology that makes it appear lifelike. Built-in sensors work to create a personalized experience by responding to your presence and your touch, and allow it to realistically react to its environment. The sensors are located in its left cheek, belly, back, head, and brow.

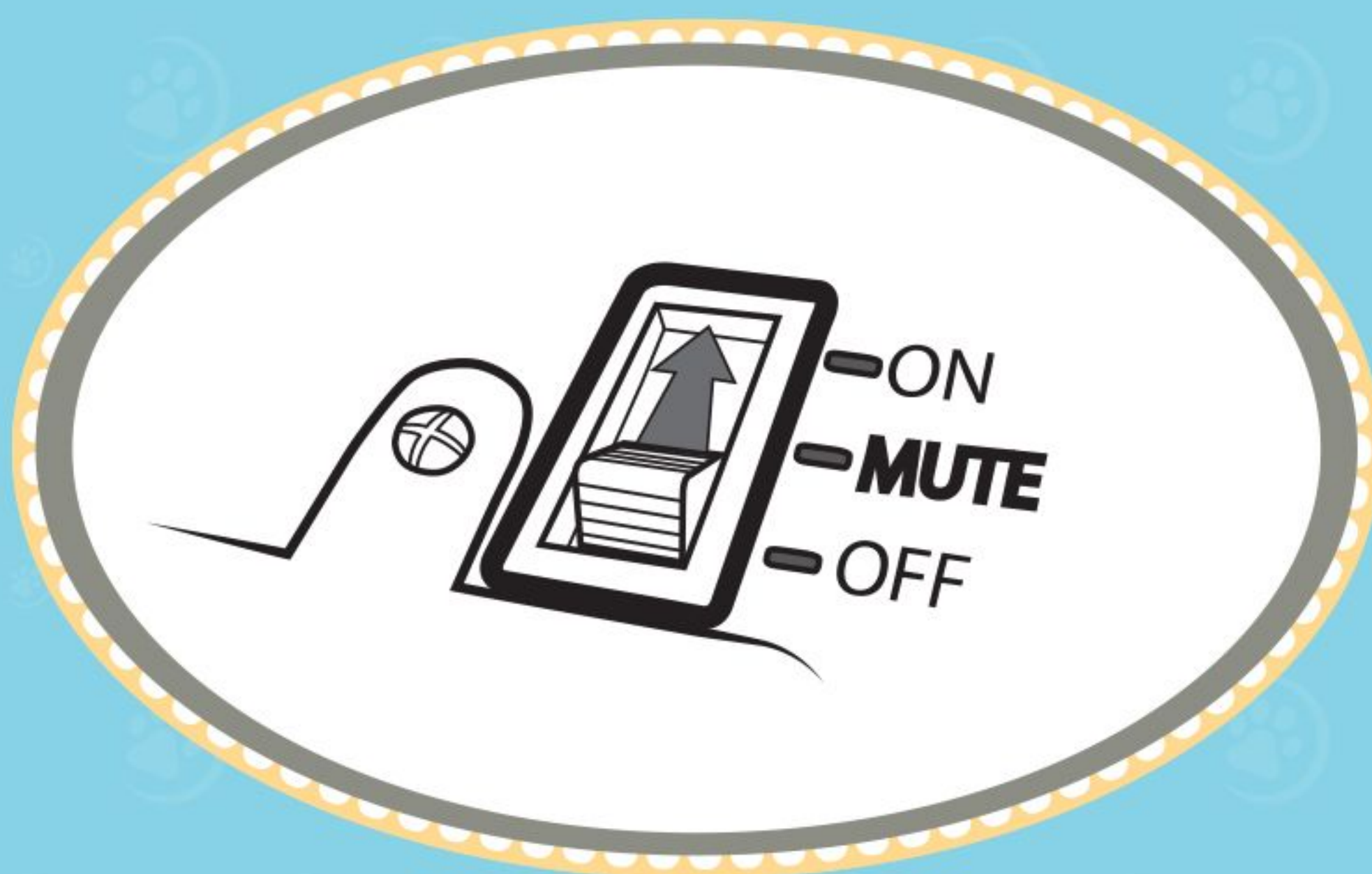
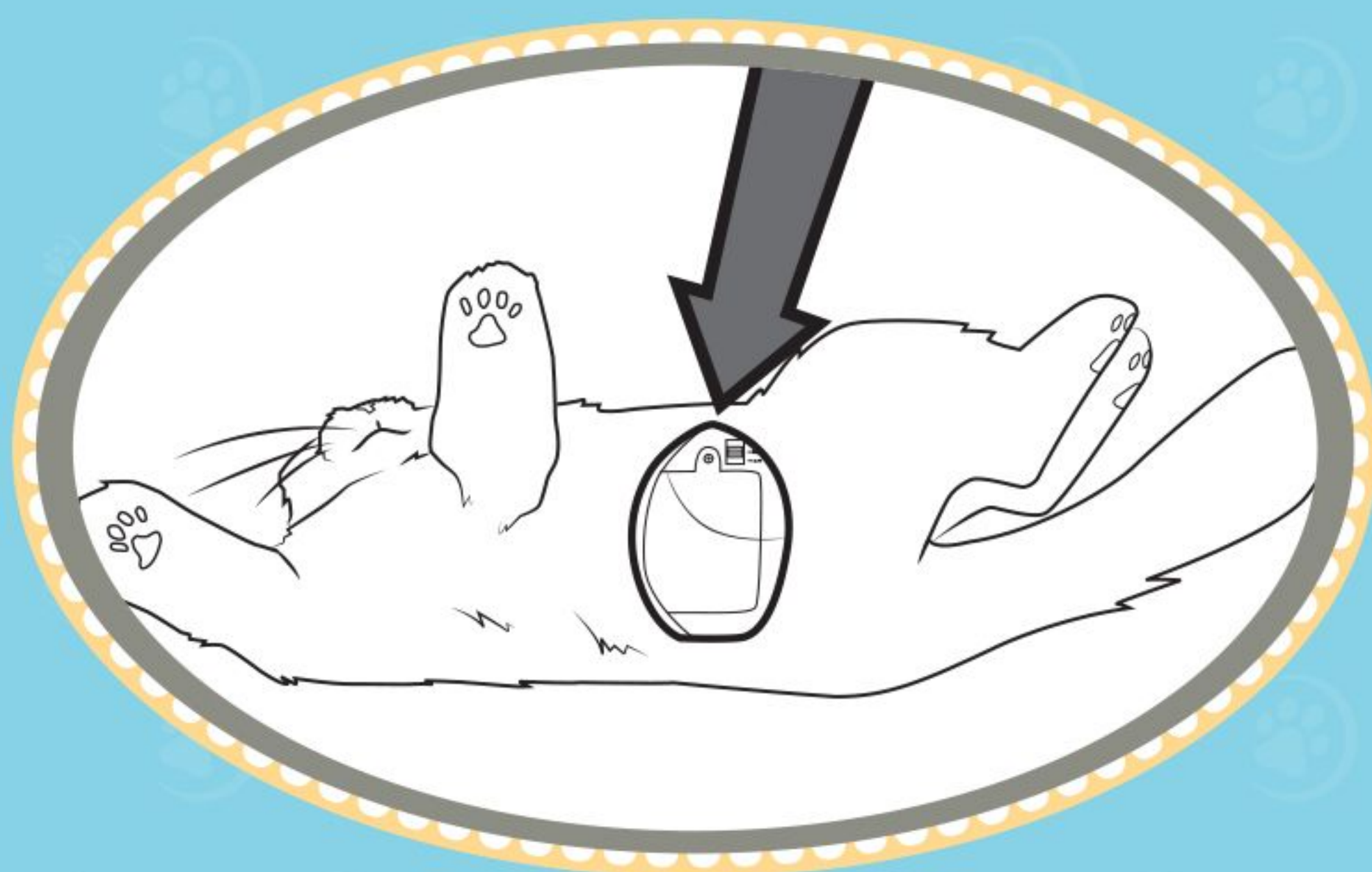
### Features of your cat

- Soft fur inspired by real feline breeds
- Authentic cat sound effects
- VibraPurr™ realistic cat purr
- Movements that mimic a real cat



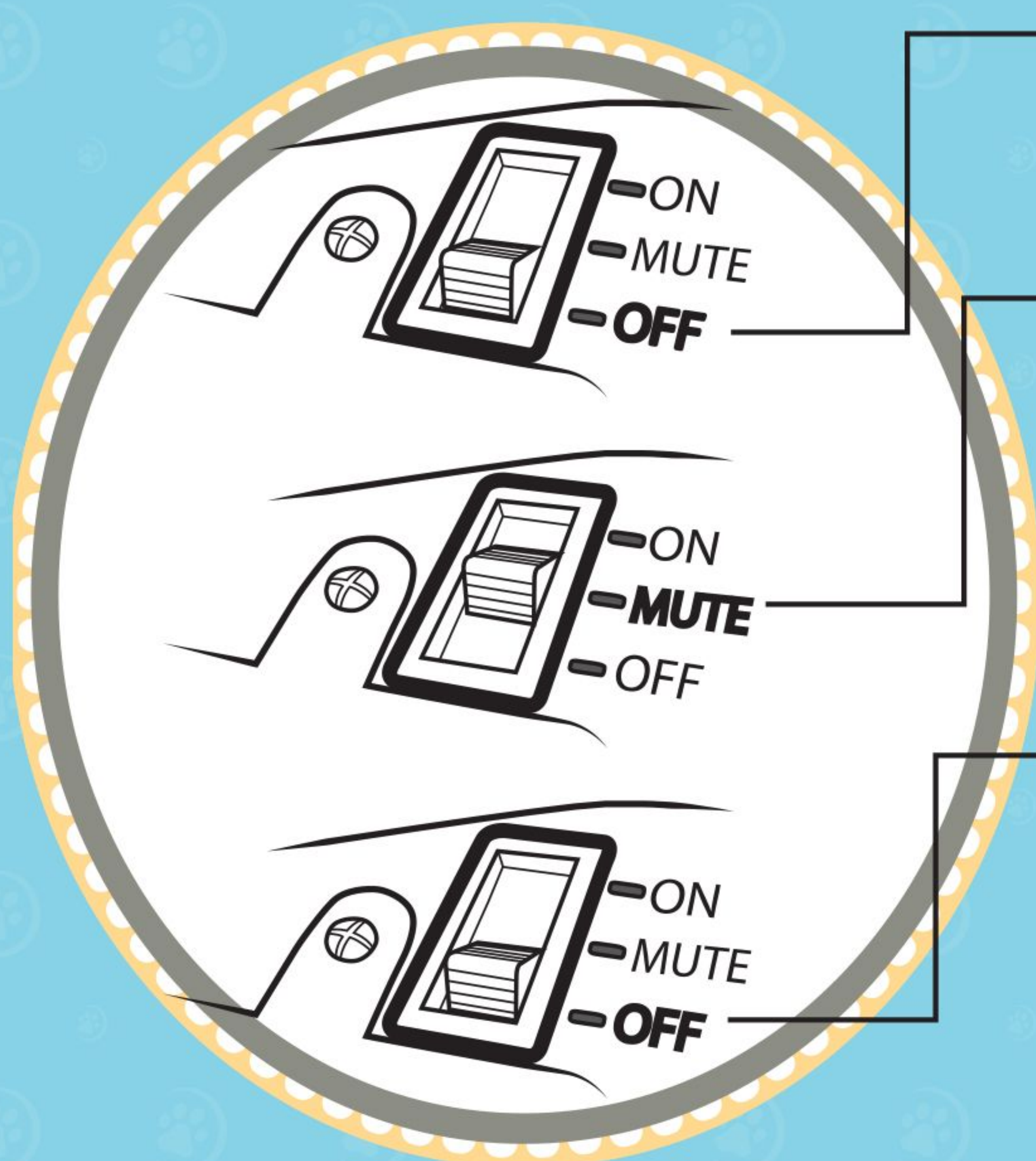
## FIRST-TIME EASY START

- ① Your Companion Pet cat is very simple to set up. It comes with batteries installed.
- ② To turn the cat on for the first time, turn the cat over and find the opening on its underside. Pull the opening apart to reveal the power switch located near the battery compartment.
- ③ Slide the switch from OFF to ON. Your cat is now ready. Turn the cat back over and place it on your lap or on a flat surface. (See below for more about the power switch.)



## THE POWER SWITCH

Find the power switch near the battery compartment on the underside of the cat (under the fur). It has settings for ON/MUTE/OFF.



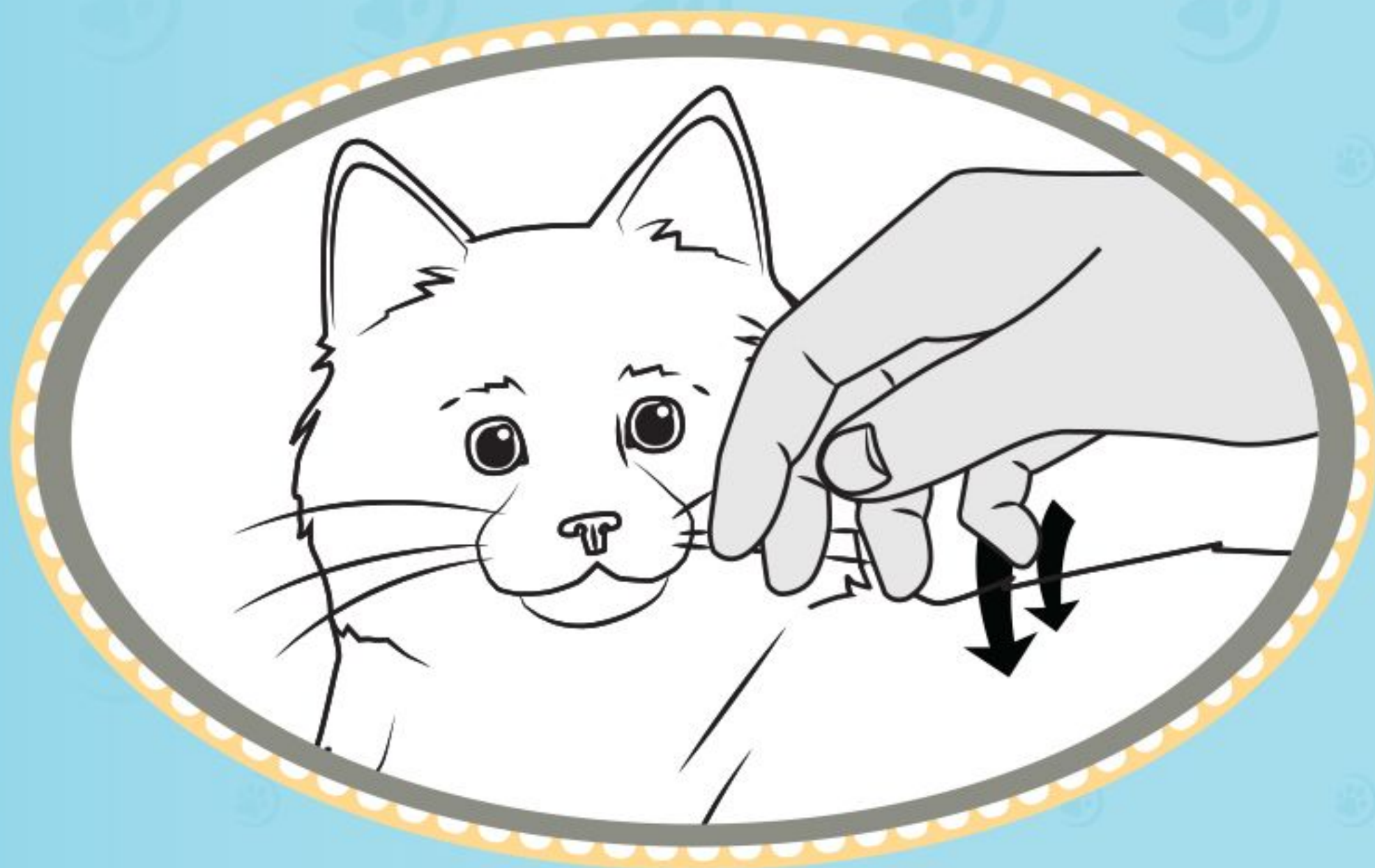
Your cat is set to **OFF** when you first take it out of the box.

To quiet the cat, slide the power switch to **MUTE**. (All other movements will continue.)

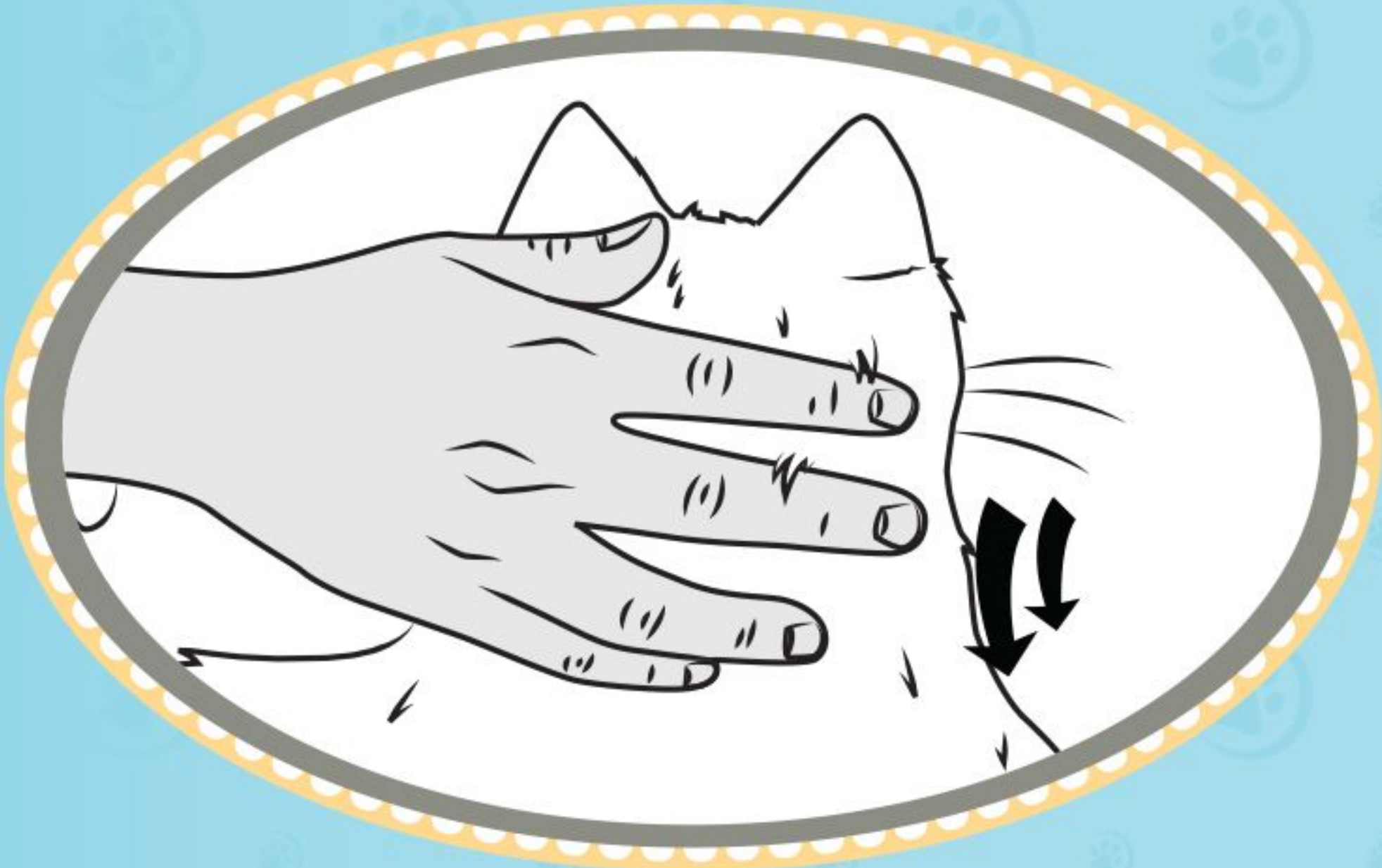
To save battery life if you are not going to be interacting with your cat for several days, slide the power switch to **OFF**.

## INTERACTING WITH YOUR CAT

Your cat will respond differently depending on where you touch it.



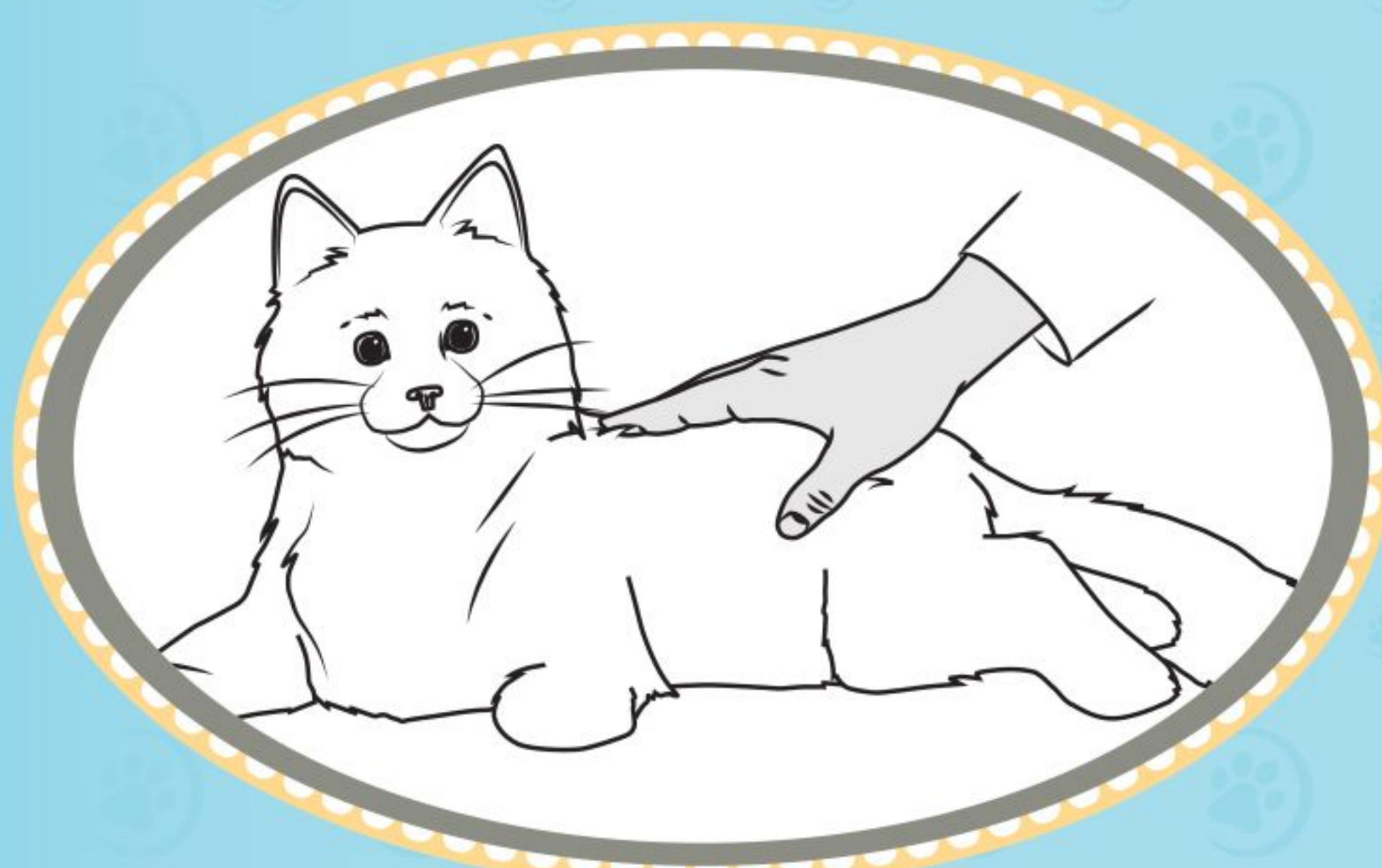
Pet the cat's left cheek and it will move its head toward your hand.



Pet the back of the cat's head and its back and your cat will purr happily.



If you keep petting your cat, it will roll on its back so you can pet its belly.



The more you pet your cat, the more relaxed it will get. It might even close its eyes and seem to snooze!

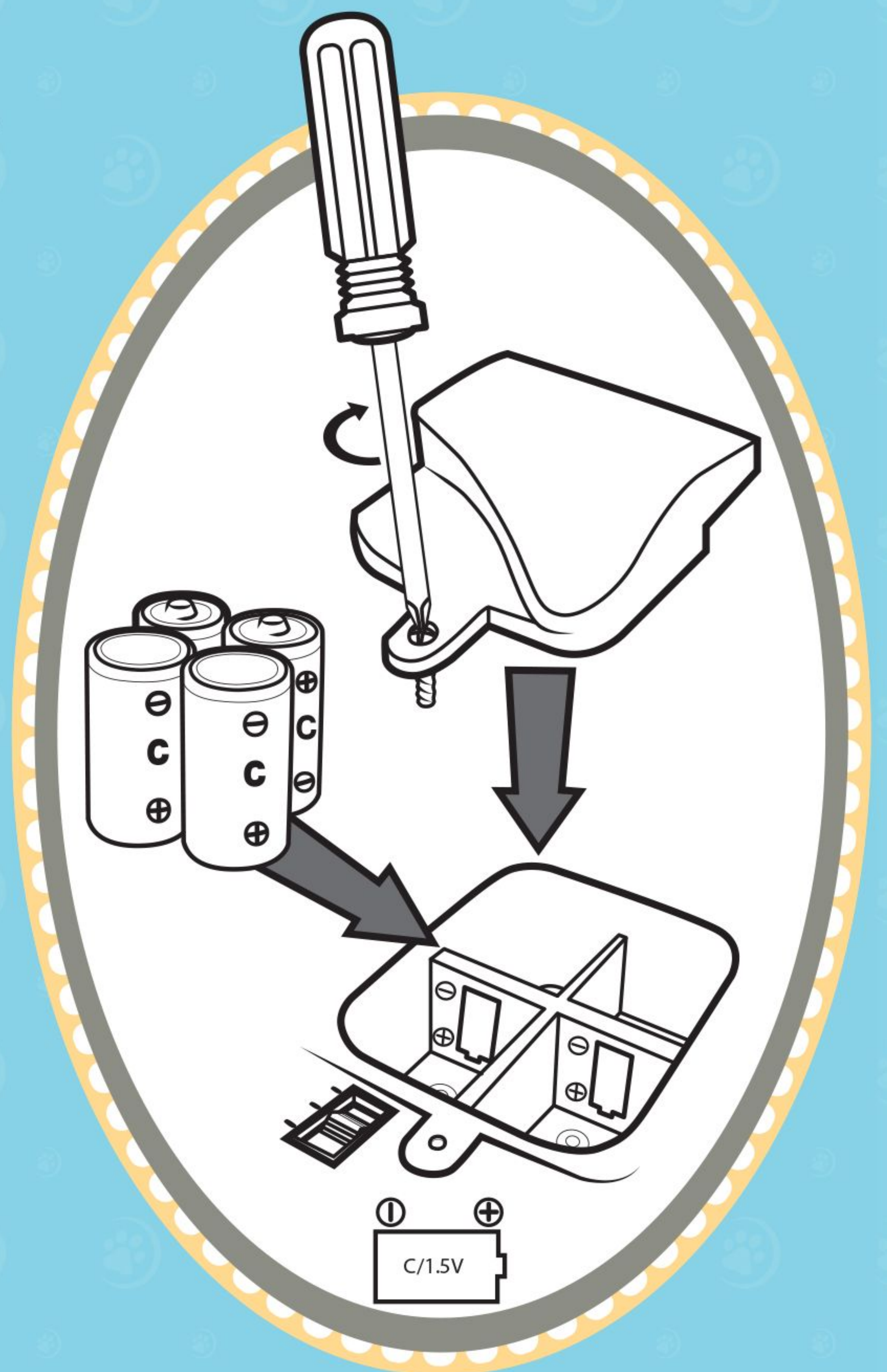


If you don't touch your cat for a few minutes, it will go to sleep. To wake it up simply give it a gentle pat on the back.

# HOW TO REPLACE BATTERIES

## 4x 1.5V C ALKALINE BATTERIES

- ① Locate the battery compartment in the opening on the underside of your cat.
- ② Use a Phillips/cross head screwdriver (not included) to loosen the screw in the battery compartment cover.
- ③ Remove the cover and the batteries. (Discard the old batteries.)
- ④ Replace with four new 1.5V “C” size alkaline batteries.
- ⑤ Replace the cover and tighten the screw.
- ⑥ Be sure the power switch is in the ON or MUTE position.
- ⑦ Close the opening on the underside of the cat.



## IMPORTANT: BATTERY INFORMATION

### ⚠ CAUTION:

#### 1. TO AVOID BATTERY LEAKAGE

- a. Always follow the instructions carefully. Use only batteries specified and be sure to insert them correctly by matching the + and - polarity markings.
- b. Do not mix old batteries and new batteries or standard (carbon-zinc) with alkaline batteries.
- c. Remove exhausted or dead batteries from the product.
- d. Remove batteries if product is not to be played with for a long time.
- e. Do not short-circuit the supply terminals.
- f. **RECHARGEABLE BATTERIES:** Do not mix these with any other types of batteries. Always remove from the product before recharging. Recharge batteries under adult supervision. **DO NOT RECHARGE OTHER TYPES OF BATTERIES.**

2. Should this product cause, or be affected by, local electrical interference, move it away from other electrical equipment. Reset (switching off and back on again or removing and re-inserting batteries) if necessary.

#### FCC STATEMENT

This device complies with Part 15 of the FCC Rules. Operation is subject to the following two conditions: (1) This device may not cause harmful interference, and (2) this device must accept any interference received, including interference that may cause undesired operation.

NOTE: This equipment has been tested and found to comply with the limits for a Class B digital device, pursuant to Part 15 of the FCC Rules. These limits are designed to provide reasonable protection against harmful interference in a residential installation. This equipment generates, uses and can radiate radio frequency energy, and, if not installed and used in accordance with the instructions, may cause harmful interference to radio communications. However, there is no guarantee that interference will not occur in a particular installation. If this equipment does cause harmful interference to radio or television reception, which can be determined by turning the equipment off and on, the user is encouraged to try to correct the interference by one or more of the following measures:

- Reorient or relocate the receiving antenna.
- Increase the separation between the equipment and the receiver.
- Consult the dealer or an experienced radio/TV technician for help.

Caution: Changes or modifications to this unit not expressly approved by the party responsible for compliance could void the user's authority to operate the equipment.

CAN ICES-3 (B) / NMB-3 (B)

## CARING FOR YOUR CAT

Your cat requires minimal care. To keep it looking good:

- Gently brush the cat with a soft brush and wipe off dirt immediately. Do not use detergents or stain removers.
- Keep your cat dry. To remove stains simply wipe with a slightly damp cloth. Do not immerse in water.
- To avoid tripping, never put your cat on the floor. When not in use place your cat on an elevated surface, especially at night.

## TROUBLESHOOTING

If your cat stops working:

- Try switching the cat off and then back on again.
- If switching the cat off and on again does not work, follow the directions on the back to replace the batteries in your cat. (See battery insertion diagram.)

**For additional assistance call US/Canada  
TEL. 1-800-255-5516**

*Hasbro's*  
**Joy**  
for  
**All**<sup>™</sup>

Hasbro has a long tradition of providing the world's best play experiences to children. We believe that play and joy should happen at all stages of life. While most of our products are primarily designed for children, we know from listening closely to our consumers that selected toys and games appeal to people of all ages. With this in mind we are proud to introduce HASBRO'S JOY FOR ALL<sup>™</sup> products, which have been carefully adapted to inspire delight, laughter, companionship, and engagement for all generations.



HASBRO'S JOY FOR ALL<sup>™</sup>  
Why should kids have all the fun?<sup>™</sup>

For more information, visit [JoyForAll.com](http://JoyForAll.com).

FILLING: ALL NEW MATERIALS: ALL POLYESTER FIBERS  
REG. NO. PA-282  
SURFACE WASH ONLY

Product and colors may vary. Retain this information for future reference.  
© 2015 Hasbro, Pawtucket, RI 02861-1059 USA. All Rights Reserved.  
TM & ® denote U.S. Trademarks.  
U.S. Pat. Nos. 8911275, 7695341, 7641535, 6811461 & Pat. Pend.  
P/N 7566750001

US/CANADA TEL. 1-800-255-5516

