

# JOIN AGA AND *invest* IN YOUR FUTURE.

## *Stay Up-to-Date* WITH THE LATEST GI NEWS AND RESEARCH.

- **Clinical Gastroenterology and Hepatology (CGH)\*:** Official monthly clinical practice journal of the AGA Institute.
- **Gastroenterology\*:** Leading monthly journal in the field of GI.
- **GI & Hepatology News:** Official newspaper of the AGA Institute providing commentary about clinical developments and the impact of health-care policy.
- **Cellular and Molecular Gastroenterology and Hepatology (CMGH):** Online open-access peer-reviewed journal publishing cutting-edge digestive biology research.
- **AGA eDigest:** Weekly e-newsletter covering important topics and news from the AGA Institute.
- **AGA Perspectives:** Bimonthly magazine where experts debate today's most controversial GI topics. Sponsored by Gilead.
- **AGA Today in Medicine:** Daily news feed featuring the day's top headlines.
- **www.gastro.org:** Access members-only resources and stay connected all day, every day.

## *Connect and Engage* WITH COLLEAGUES WHO SHARE YOUR PASSIONS AND FACE SIMILAR CHALLENGES.

- **AGA Community:** A private, member-only forum, directory and resource library.
- **Section Affiliations:** Thirteen special interest groups. AGA members can join up to six.
- **Committees:** Groups of volunteer members assigned a mission and set of responsibilities associated with a particular area within the association. You must apply or be nominated for a committee appointment.
- **AGA Academy of Educators:** The home for educators within the AGA.
- **Social Media:** Interact with AGA through a variety of social networks.

## *Improve Your Skill Set* WITH ACCESS TO A VARIETY OF EDUCATIONAL OPPORTUNITIES OFFERED FREE OR AT A DISCOUNT.

- **Digestive Disease Week® (DDW):** The world's largest gathering of GI professionals and one of the top 50 medical meetings.
- **AGA Postgraduate Course:** AGA Institute's flagship educational course covering both basic science and clinical topics.
- **CME and MOC:** Maintain certification through member discounts on a variety of educational resources.
- **DDSEP® 8:** A diverse learning platform that allows you to prepare for the GI board exam, assess your knowledge and keep current on GI advances.

## JOIN AGA AND *save.*

Feature	Savings
CGH	\$467
Gastroenterology	\$968
DDW	\$420
DDSEP® 8	\$200
<b>Total</b>	<b>\$2,055</b>

Journal prices are 2016 rates.

### Connect with AGA

 /AmerGastroAssn

 /AmerGastroAssn

 /AmerGastroAssn

### Join the Discussion

 [community.gastro.org](http://community.gastro.org)

\* Online subscriptions for international corresponding member — category I and II. Subscriptions not included for international affiliate member (available for purchase).

\*\* Eligible physicians must have completed their GI fellowship program within the last three years to receive complimentary access.

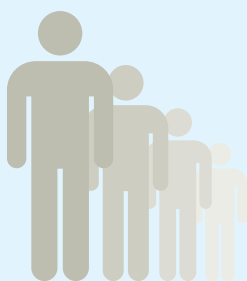
[www.gastro.org/sign-up](http://www.gastro.org/sign-up)



# Welcome to the AGA

*Founded in*  
**1897**

**13 SECTION**  
AFFILIATIONS  
*special interest groups*  
AMONG AGA MEMBERS

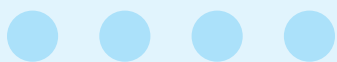


*More than*  
**16,000**  
*members dedicated to*  
**IMPROVING**  
DIGESTIVE HEALTH

## 10 MEMBER TYPES

REPRESENTING *every facet of*

## GASTROENTEROLOGY



*the number of social*  
NETWORKING SITES TO  
CONNECT WITH AGA

# 4

## 21 COMMITTEES

PLAYING AN ACTIVE ROLE IN  
*AGA'S decision-making process*

## 1 MISSION:

*to Advance the Science and Practice*  
OF GASTROENTEROLOGY

## Countries eligible for International Corresponding Member

### CATEGORY I

Annual Dues \$205

Albania	Kazakhstan
Algeria	Lebanon
American Samoa	Libya
Angola	Macedonia
Argentina	Malaysia
Azerbaijan	Maldives
Belarus	Marshall Islands
Belize	Mauritius
Bosnia and Herzegovina	Mexico
Botswana	Montenegro
Brazil	Namibia
Bulgaria	Palau
China	Panama
Columbia	Paraguay
Costa Rica	Peru
Cuba	Romania
Dominica	Russia
Dominican Republic	Serbia
Ecuador	South Africa
Equatorial Guinea	St. Lucia
Fiji	St. Vincent and the Grenadines
Gabon	Suriname
Georgia	Thailand
Grenada	Turkey
Guyana	Turkmenistan
Iran	Tuvalu
Iraq	Venezuela
Jamaica	
Jordan	



## Countries eligible for International Corresponding Member

### CATEGORY II

#### Annual Dues \$55

Afghanistan	Honduras	Rwanda
Armenia	India	Samoa
Bangladesh	Indonesia	São Tomé and Príncipe
Benin	Kenya	Senegal
Bhutan	Kiribati	Sierra Leone
Bolivia	Korea (Dem. Rep.)	Solomon Islands
Burkina Faso	Kosovo	Somalia
Burundi	Kyrgyz Republic	Sri Lanka
Cabo Verde	Lao	Sudan
Cambodia	Lesotho	Swaziland
Cameroon	Liberia	Syrian Arab Republic
Cent. African Republic	Madagascar	Tajikistan
Chad	Malawi	Tanzania
Comoros	Mali	Timor-Leste
Congo, Dem. Rep.	Mauritania	Togo
Congo, Rep.	Micronesia	Tonga
Côte D'ivoire	Moldova	Tunisia
Djibouti	Mongolia	Uganda
Egypt	Morocco	Ukraine
El Salvador	Mozambique	Uzbekistan
Eritrea	Myanmar	Vanautu
Ethiopia	Nepal	Vietnam
Gambia	Nicaragua	West Bank & Gaza
Ghana	Niger	Yemen
Guatemala	Nigeria	Zambia
Guinea	Pakistan	Zimbabwe
Guinea-Bissau	Papua New Guinea	
Haiti	Philippines	

## International Membership Options

### INTERNATIONAL MEMBERSHIP DUES

**One-time application fee: \$40**

#### 2017 Annual Dues

(BASED ON GI TRAINING COMPLETION DATE)

January–December 2016	\$200
January–December 2015	\$300
January–December 2014	\$350
Before 2014	\$450

### INTERNATIONAL CORRESPONDING MEMBERSHIP DUES

**One-time application fee: \$25**

**2017 Annual Dues: \$205\* or \$55\***

#### Benefits

Same benefits as for international membership with the following exceptions: **(1) journal subscriptions are online only**

\*View charts for eligibility.

### INTERNATIONAL AFFILIATE MEMBERSHIP DUES

**One-time application fee: \$25**

**2017 Annual Dues: \$40**

#### Benefits

Same benefits as for international membership with the following exceptions: **(1) DDW savings are not included; (2) journals may be purchased separately at a discounted rate as follows:**

*Gastroenterology*: \$370/year

*Clinical Gastroenterology and Hepatology*: \$84/year

Please indicate your selection of journals on your application for membership.

## ELIGIBILITY REQUIREMENTS

Membership is open to physicians, surgeons, scientists and other persons residing outside North America who meet one or more of the following criteria and have one of the following degrees or certifications (MD, PhD, ScD, DVM, DO or equivalent):

- A physician or scientist with a faculty appointment in gastroenterology.
- Published articles clearly related to gastroenterology in a peer-reviewed journal.
- Completed an analogous postgraduate training program outside North America in gastroenterology.
- A demonstrated professional commitment to gastroenterology, such as through membership in a national society with a special interest in peer-reviewed gastroenterology, specialized practice or function in gastroenterology, research, participation in training of physicians in gastroenterology, or other evidence as may be applicable.

### For Corresponding Membership Only

The reduced dues eligibility is determined using the World Bank's country classifications, which are based on the economic status of an applicant's country of residence. Please view the charts to determine your member category. If your country of residence is not listed, you are not eligible for international corresponding membership.

## QUESTIONS?

Contact AGA Member Relations at 301-941-2651 or send an email to [member@gastro.org](mailto:member@gastro.org).



## Demographics

**Sex:**  Male  Female **Date of Birth** (required): \_\_\_\_/\_\_\_\_/\_\_\_\_  
(DD/MM/YYYY)

**Professional Activity:** Indicate the percentage of time you spend in each of the following professional activities (total should not exceed 100 percent):

\_\_\_\_ % patient care      \_\_\_\_ % research: basic or translational      \_\_\_\_ % research: clinical      \_\_\_\_ % teaching  
\_\_\_\_ % administrative: management      \_\_\_\_ % industry      \_\_\_\_ % other \_\_\_\_\_

**Which of the following best describes your primary work setting?**

- Physician-owned practice       Hospital-owned practice       Jointly owned physician/hospital practice  
 Academic institution with primary mission of teaching/research       Hospital/health system       Locum tenens/independent contractor  
 Pharmaceutical or medical device company       Other \_\_\_\_\_

**If you are in a physician-owned or hospital-owned practice, please answer the following questions:**

How many gastroenterologists are in your practice? \_\_\_\_

How many non-GI physicians are in your practice? \_\_\_\_

How many nurse practitioners/physician assistants are in your practice? \_\_\_\_

If you are in a physician-owned practice, are you an owner?  Yes  No

**Subspecialty:**  General GI, including liver disease       General GI, but not liver disease       Primarily liver disease       Pediatric gastroenterology  
 GI surgery       Other \_\_\_\_\_

**AGA Section Affiliations:** Choose up to six sections to belong to: 1 \_\_\_\_ 2 \_\_\_\_ 3 \_\_\_\_ 4 \_\_\_\_ 5 \_\_\_\_ 6 \_\_\_\_

A. Clinical Practice

E. Liver & Biliary

I. Immunology, Microbiology & IBD

B. Esophageal, Gastric & Duodenal Disorders

F. Gastrointestinal Oncology

J. Cellular and Molecular Gastroenterology

C. Intestinal Disorders

G. Neurogastroenterology & Motility

K. Obesity, Metabolism & Nutrition

D. Pancreatic Disorders

H. Growth, Development & Child Health

L. Imaging & Advanced Technology

## Applicant Signature (required)

I authorize AGA to obtain information from societies, hospital staff, members and any other source regarding this application and my qualifications for membership. This information, whether or not solicited by AGA, may be kept confidential by AGA. I certify that the above information is accurate.

SIGNATURE

PLEASE PRINT NAME

## Payment

Membership period is Jan. 1–Dec. 31. Annual dues will be **prorated** based on acceptance date. You can find the proration chart at [www.gastro.org/membership](http://www.gastro.org/membership). **Payment of the application fee and current dues must be provided at time of submission. New members will not be activated without full payment.**

My check is enclosed in U.S. dollars, payable to AGA.

CHECK #

CHECK AMOUNT

Visa       Mastercard       American Express

NAME ON CARD

CARD NUMBER

CW

EXPIRATION DATE

AMOUNT

SIGNATURE

**Three ways to  
submit your  
application:**



**Mail**

AGA Member Relations Department  
4930 Del Ray Ave.  
Bethesda, MD 20814-2513



**Fax**

301-654-5920



**Email**

[member@gastro.org](mailto:member@gastro.org)