

# Fabrex<sup>®</sup>

Furnishings by **EXCEL**



## linen library - sheers





# linen library - sheers

The Linen Library Sheers collection offers an airy, elegant range of fabrics that softly filter light while introducing refined texture. Designed to add a sense of lightness and openness to any interior, this collection includes sheers with criss-cross check patterns for quiet geometry, fine pinstripes that bring subtle linear flow and a mesh-like weave that adds both structure and transparency. A self-slub textured sheer contributes organic irregularity, while a hexagonal texture adds a touch of modern intricacy.

Each fabric maintains a soft matte finish and fits beautifully into the Linen Library's muted palette of neutrals. These sheers are made to layer seamlessly with drapery, upholstery, and embroidered pieces from the series, allowing for complete spatial harmony. Their refined textures and breathable weaves bring sophistication without overpowering the space, ideal for serene, light-filled environments.





# index

04

## fabric shot

to view the fabric real look in large view

11

## fabric layers

to view the fabric as per the catalog layering

21

## fabric shade chart & technicals

to view the fabric in available shades with  
the technical specifications





NEOMA | SAND | SLL-017  
04



Click on fabric to view the product shades & technicals.

◀go to index

★ The e-catalogue should be used for reference purpose only. Swatches colour may vary in physical.





HENRI | MUSHROOM | SLL-014  
05



Click on fabric to view the product shades & technicals.

◀go to index

★ The e-catalogue should be used for reference purpose only. Swatches colour may vary in physical.





VISAGE | SAND | SLL-020  
06

 Click on fabric to view the product shades & technicals.

[◀go to index](#)

★ The e-catalogue should be used for reference purpose only. Swatches colour may vary in physical.





MARSA | OAT | SLL-026  
07



Click on fabric to view the product shades & technicals.

◀go to index

★ The e-catalogue should be used for reference purpose only. Swatches colour may vary in physical.





AIDAN | SAND | SLL-018  
08



Click on fabric to view the product shades & technicals.

◀go to index

★ The e-catalogue should be used for reference purpose only. Swatches colour may vary in physical.





WATERLINE | SAND | SEL-023  
09

 Click on fabric to view the product shades & technicals.

[◀go to index](#)

★ The e-catalogue should be used for reference purpose only. Swatches colour may vary in physical.





HARBOUR | SAND | SEL-008  
10



Click on fabric to view the product shades & technicals.

◀go to index

★ The e-catalogue should be used for reference purpose only. Swatches colour may vary in physical.





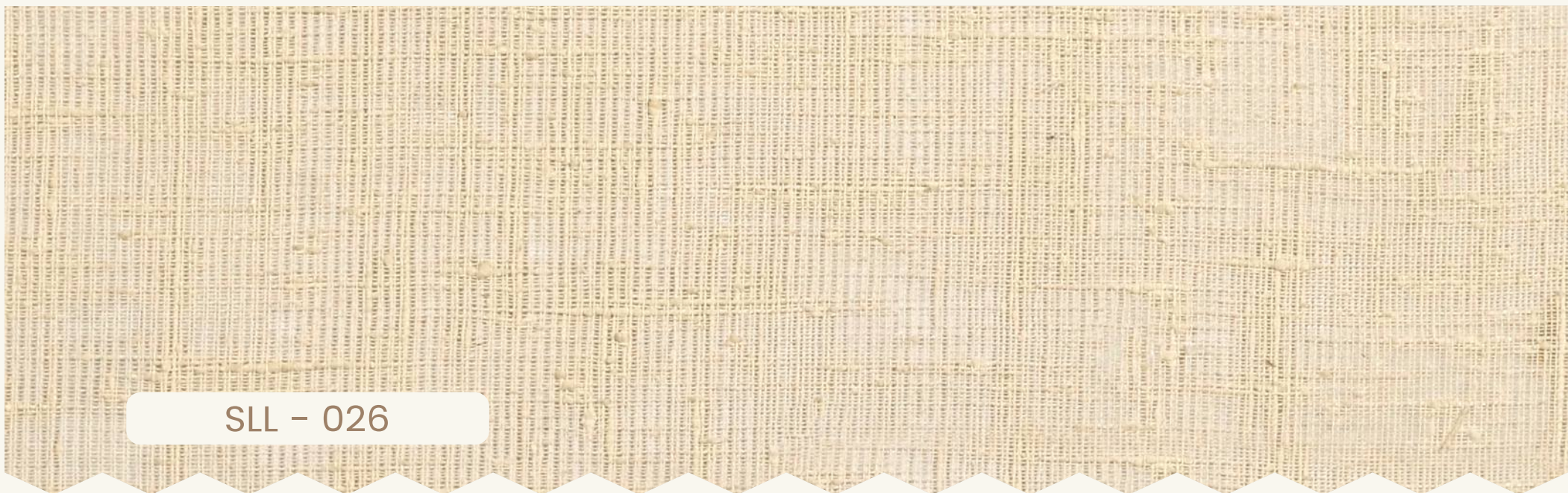
SLL - 027




SLL - 029



SLL - 030



SLL - 026

 Click on fabric to view the product shades & technicals.





SLL - 028



SEL - 022



SEL - 007



Click on fabric to view the product shades & technicals.

◀go to index





SLL - 019



SLL - 020



SLL - 018



SLL - 016

 Click on fabric to view the product shades & technicals.

[◀go to index](#)





SLL - 017



SEL - 008



SEL - 023



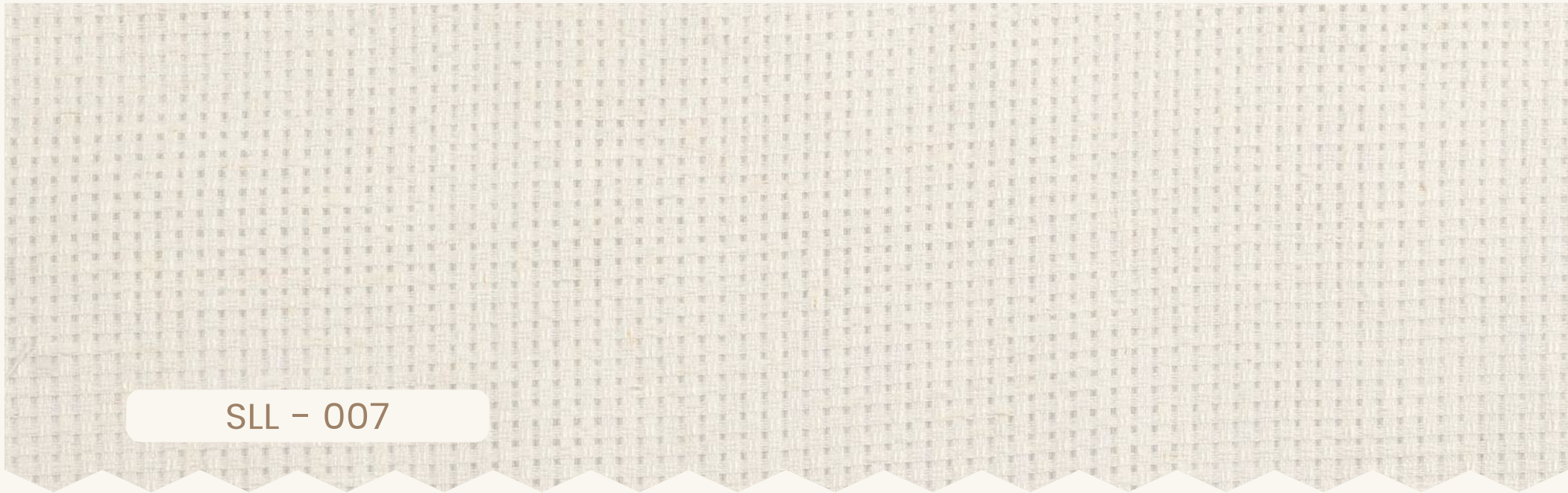
Click on fabric to view the product shades & technicals.

◀go to index





SLL - 008




SLL - 007



SEL - 006



SLL - 006

 Click on fabric to view the product shades & technicals.

[◀go to index](#)





SLL - 010



SLL - 009



SEL - 021



Click on fabric to view the product shades & technicals.

◀go to index

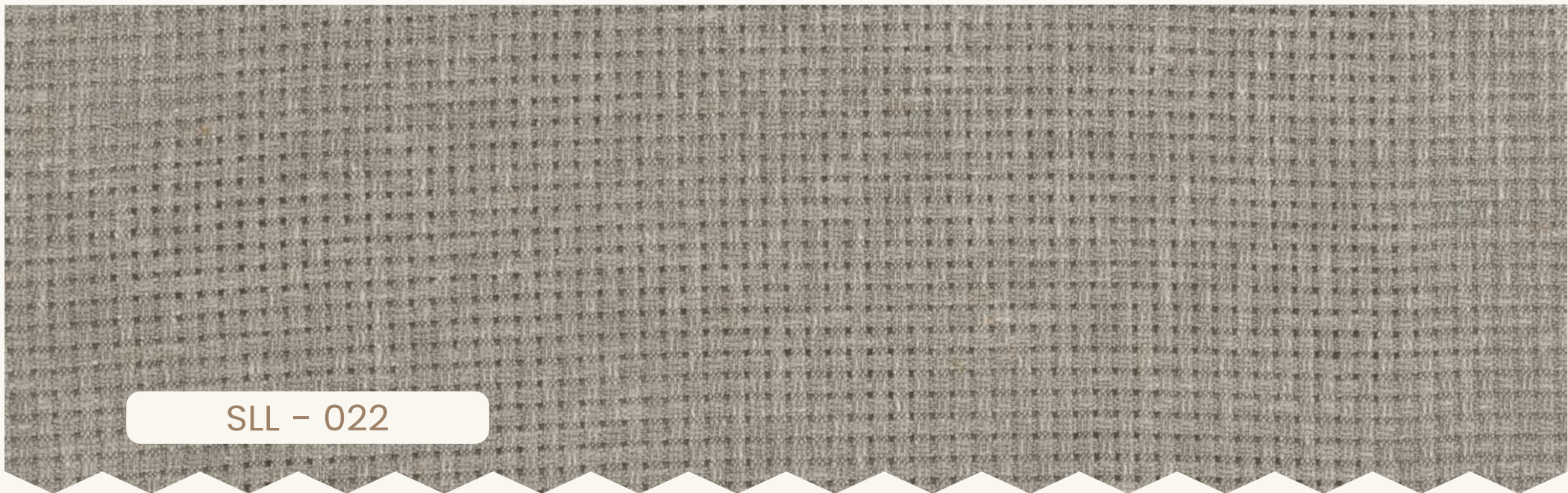




SLL - 023



SEL - 025



SLL - 022



SEL - 010

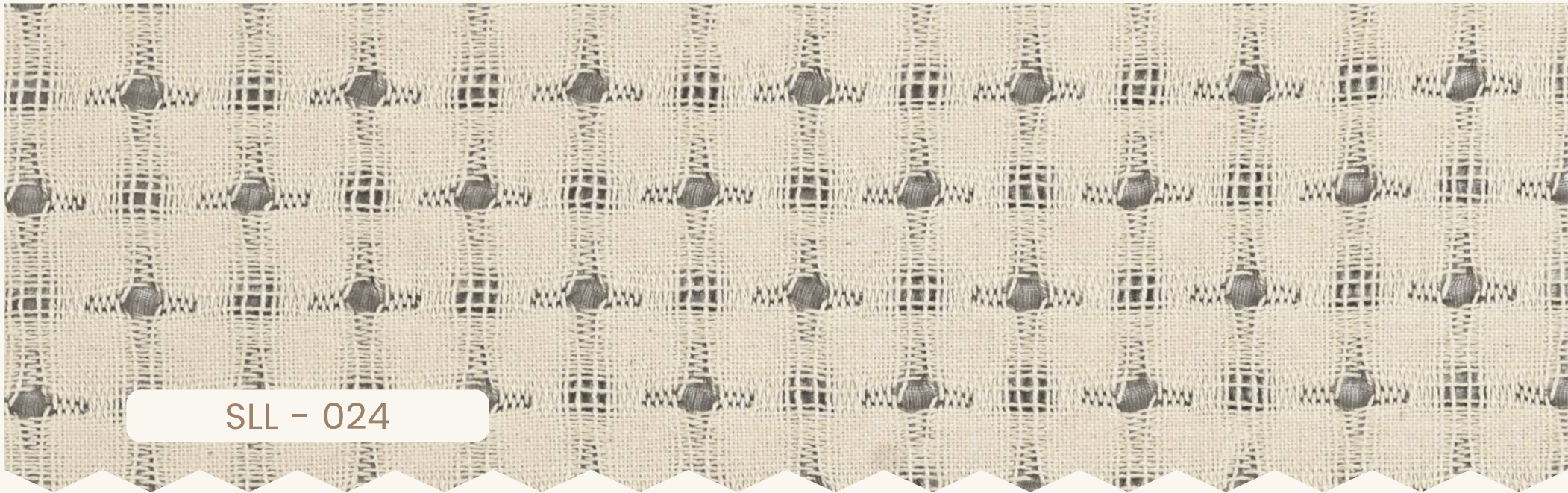


Click on fabric to view the product shades & technicals.

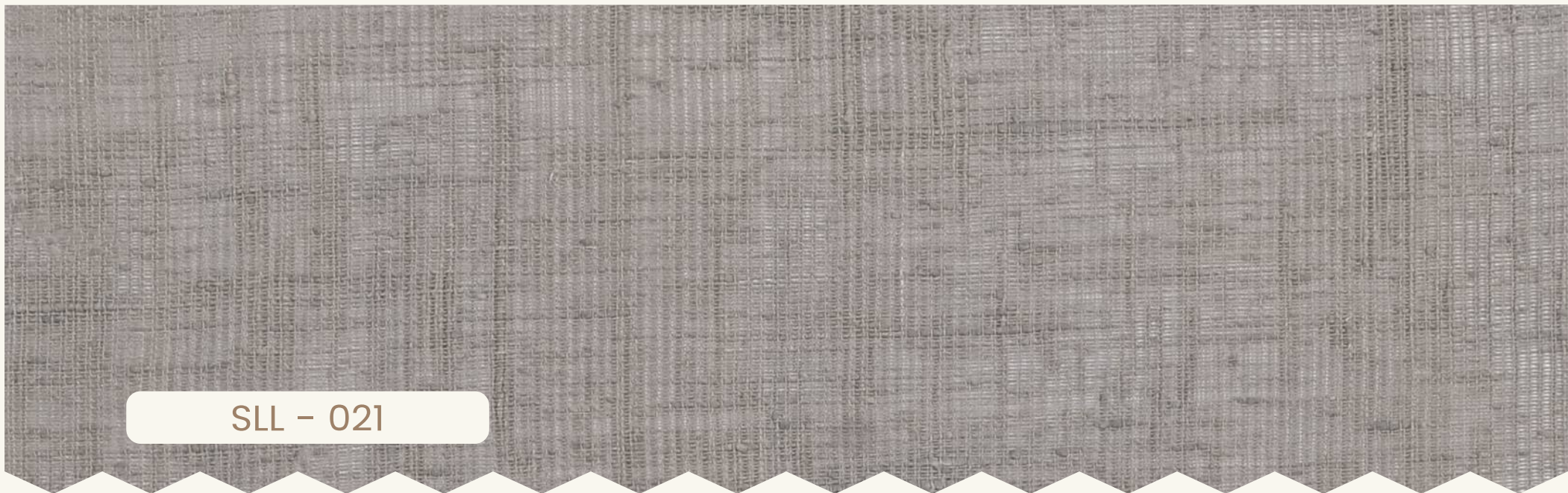




SLL - 025



SLL - 024



SLL - 021



Click on fabric to view the product shades & technicals.

◀go to index





SLL - 013




SLL - 015



SLL - 011



SLL - 014

 Click on fabric to view the product shades & technicals.

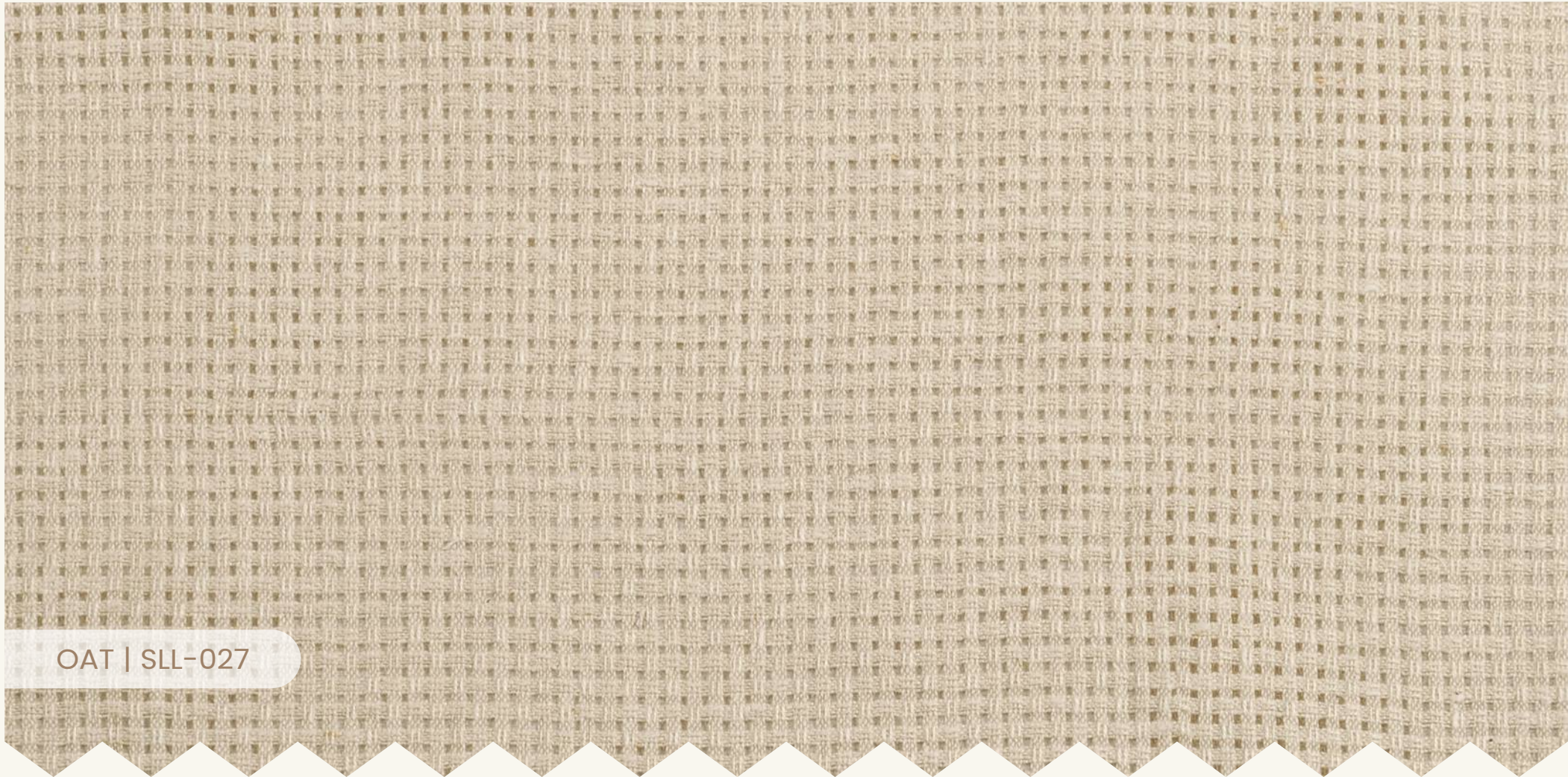
[◀go to index](#)



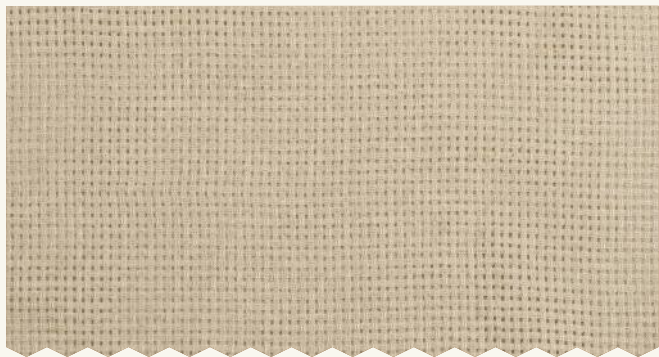




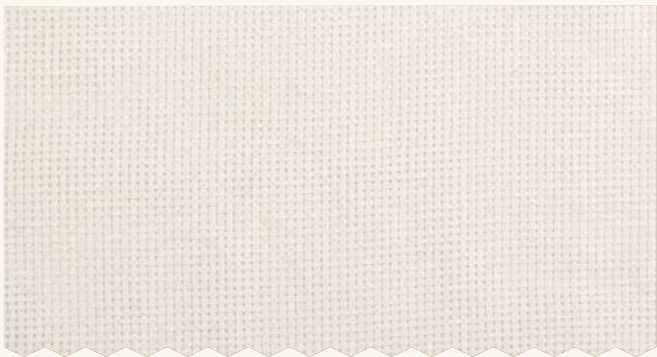
neoma - shade chart



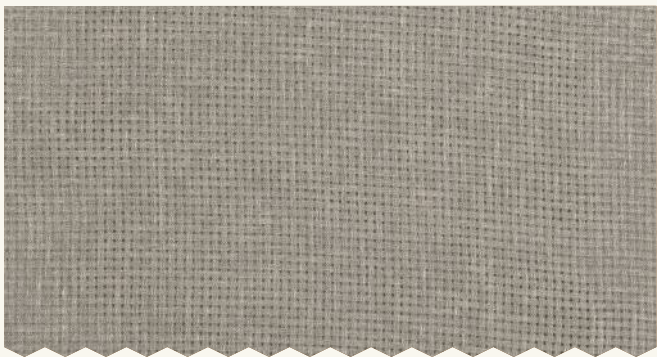
OAT | SLL-027



SAND | SLL-017



PEARL | SLL-007



PEBBLE | SLL-022



MUSHROOM | SLL-012

Width (cm): 140 cms  
Gsm: 150  
Martindale: N/A

Composition: 64% poly. 25% cott. 11% lin.  
H Repeat: 1 cms  
V Repeat: 0.88 cms

Wash Care:   
End Use:



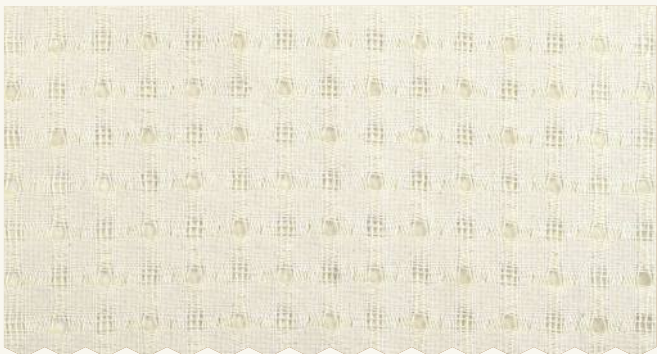
henri - shade chart



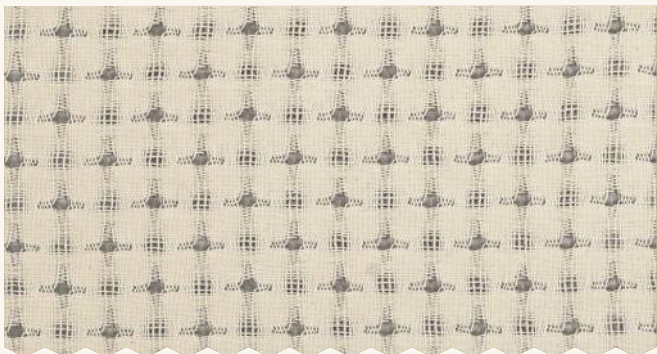
OAT | SLL-029



SAND | SLL-019



PEARL | SLL-009



PEBBLE | SLL-024



MUSHROOM | SLL-014

Width (cm): 140 cms  
Gsm: 253  
Martindale: N/A

Composition: 8% poly. 92% cott.  
H Repeat: 1.98 cms  
V Repeat: 2.08 cms

Wash Care: ○ ☒ ☒ ☒ ☒  
End Use: ☒



visage - shade chart



SAND | SLL-020



PEARL | SLL-010



PEBBLE | SLL-025



MUSHROOM | SLL-015

Width (cm): 140 cms  
Gsm: 124  
Martindale: N/A

Composition: 66% poly. 21% cott. 13% lin.  
H Repeat: 4.01 cms  
V Repeat: 0.12 cms

Wash Care: ○ ☒ ☒ ☒ ☒  
End Use: 🏠



marsa - shade chart



OAT | SLL-026



SAND | SLL-016



PEARL | SLL-006



PEBBLE | SLL-021



MUSHROOM | SLL-011

Width (cm): 140 cms  
Gsm: 230  
Martindale: N/A

Composition: 100% polyester  
H Repeat: N/A  
V Repeat: N/A

Wash Care: ○ ☒ ☒ ☒ ☒  
End Use: 🏠



aidan - shade chart



OAT | SLL-028



SAND | SLL-018



PEARL | SLL-008



PEBBLE | SLL-023



MUSHROOM | SLL-013

Width (cm): 140 cms  
Gsm: 171  
Martindale: N/A

Composition: 89% poly. 7% cott. 4% lin.  
H Repeat: 2.54 cms  
V Repeat: 2.54 cms

Wash Care:   
End Use:





waterline - shade chart



PEARL | SEL-022



SAND | SEL-023



CHALK | SEL-021



SHADOW | SEL-025



MUSHROOM | SEL-024

Width (cm): 140 cms  
Gsm: 128  
Martindale: N/A

Composition: 50% poly. 50% cott.  
H Repeat: 1.50 cms  
V Repeat: 0.51 cms

Wash Care:   
End Use: 



harbour - shade chart



PEARL | SEL-007



SAND | SEL-008



CHALK | SEL-006



SHADOW | SEL-010

Width (cm): 140 cms  
Gsm: 140  
Martindale: N/A

Composition: 100% polyester  
H Repeat: 6.65 cms  
V Repeat: 0.73 cms

Wash Care:   
End Use: 





Fabrex®  
Furnishings by EXCEL



# linen library - sheers



[www.excelwallpapers.com](http://www.excelwallpapers.com)