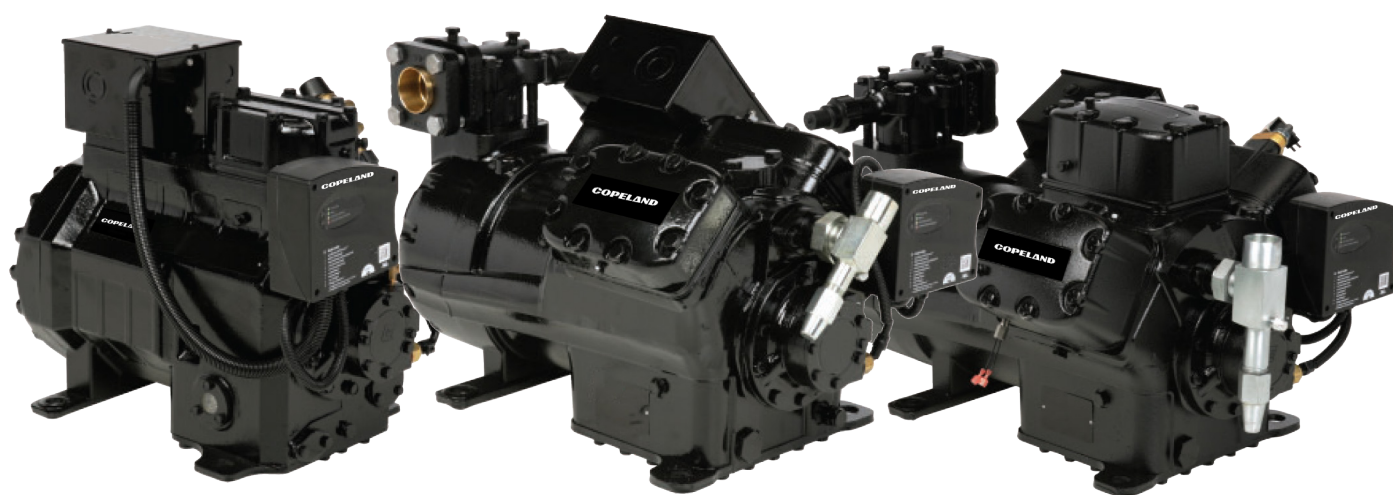


# Copeland Discus

*Compressor replacement guide*



**COPELAND**

## Copeland Discus compressors deliver best in class performance

Copeland Discus compressors have been the unquestioned leader in commercial refrigeration for over 30 years. Combining world class efficiency and reliability, Discus is the compressor of choice to meet your refrigeration needs. The unique Discus valve design provides improved efficiency at operating conditions where most semi-hermetic compressors run. Gruelling life-testing and 30 years of field experience make Discus compressors the most reliable compressor in the industry.

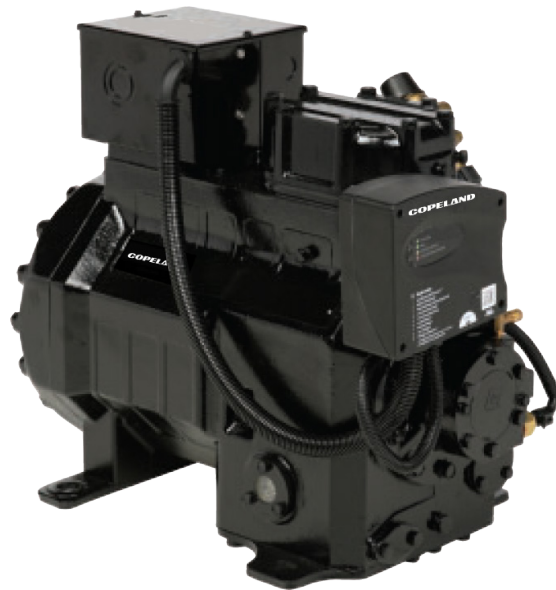
### Continued technology leadership on the Discus platform

Copeland engineers have continued to develop new and exciting technologies to leverage the established Discus platform. One example stems from the challenge end users have always faced with the ability to match compressor capacity to the load requirements of the refrigerated space. Copeland Discus digital compressors were designed to specifically meet that challenge. With the ability to modulate infinitely between 10 - 100% of rated capacity, digital Discus compressors match the system load requirements precisely while consuming less energy and increasing the life of compressor and other system components.

Protect your investment with Copeland.

## Discus compressors

End users want cold and they want it reliably. Even the most robust industry leading compressors, such as Discus, can fail or not function properly under adverse conditions, like poor installations. Facing this challenge, Copeland engineers have developed innovative technologies via compressor electronics to increase compressor reliability and life. All new Discus compressors are shipped with compressor electronics technology onboard. Through innovative and proprietary algorithms, the compressor is used as a sensor to protect and diagnose the compressor. When adverse conditions exist, compressor electronics technology can proactively shut down the compressor to prevent future damage until the condition is no longer present, enabling longer compressor life and sustained product integrity while protecting the refrigeration investment.



### Discus compressor replacement guide

2D Discus Nomenclature					3D Discus Nomenclature					4D Discus Nomenclature					6D Discus Nomenclature				
Model	- Displacement +				Model	- Displacement +				Model	- Displacement +				Model	- Displacement +			
Standard/med temp	2DC	2DD	2DL	2DA	Standard model	3DA	3DB	3DF	3DS	Standard model	4DA	4DB	4DH	4DJ	Standard model	6DB	6DH	6DJ	6DU
Standard/low temp	2DF	2DL	2DA	2DB	Unloader med temp	3DE	3DP	3DK	2DT	Unloader model	4DE	4DC	4DK	4DR	1-Bank unloader	6DW	6DK	6DR	6DV
					Unloader low temp	3DH	3DJ	3DG	3DR	Oil cooler			4DL*	4DT*	2-Bank unloader	6DY	6DP	6DS	6DZ
										Unloader w/oil cooler	4DN		4DP*	4DS*	Oil cooler		6DL*	6DT*	
															1-Bank w/oil cooler		6DN	6DE*	
															2-Bank w/oil cooler			6DF*	

\* 4D and 6D oil cooler capable

Wholesale Replacement Model	Voltage	OEM Discus Model		Obsolete Discus Models (Prior to 2006)				Conventional Reed Models		
		Discus II (2006-current)	Discus III (2012+)							
<b>2DA3F23KE-TFC-800</b>	208/230-3									
<b>2DA3F23KE-TFD-800</b>	460-3	2DA3F23K*		2DA3-060*	MDA1-0600			9RJ*-0765		
2DA3F23KE-TFE-800	575-3									
2DA3R58K0-TFC-800	208/230-3									
2DA3R58K0-TFD-800	460-3	2DA3R58K0		2DA3-0500	MDA1-0500					
<b>2DA3R89KE-TFC-800</b>	208/230-3									
<b>2DA3R89KE-TFD-800</b>	460-3	2DA3R89K*		2DL3-075*	MDA1-0750					
2DA3R89KE-TFE800	575-3									
<b>2DB3F25KE-TFC-800</b>	208/230-3									
<b>2DB3F25KE-TFD-800</b>	460-3	2DB3F25K*		2DB3-060*	MDB1-0600			9RJ*-0765		
2DB3F25KE-TFE-800	575-3									
2DC3R53KE-CFB-800	230-1									
<b>2DC3R53KE-TFC-800</b>	208/230-3									
<b>2DC3R53KE-TFD-800</b>	460-3	2DC3R53K*		2DC3-050*	MDC1-0500			NRA*-0500		
2DC3R53KE-TFE-800	575-3									
<b>2DD3R63KE-TFC-800</b>	208/230-3									
<b>2DD3R63KE-TFD-800</b>	460-3	2DD3R63K*		2DD3-050*	MDD*-0500			NRM*-0500		
2DD3R63KE-TFE-800	575-3									
2DF3F16KE-CFB-800	230-1									
<b>2DF3F16KE-TFC-800</b>	208/230-3									
<b>2DF3F16KE-TFD-800</b>	460-3	2DF3F16K*		2DF3-030*	MDD*-0300			MRA*-0500 MRF*-0500		
2DF3F16KE-TFE-800	575-3									
<b>2DL3F20KE-TFC-800</b>	208/230-3									
<b>2DL3F20KE-TFD-800</b>	460-3	2DL3F20K*		2DL3-040*				MRA*-0500 MRB*-0500		
2DL3F20KE-TFE-800	575-3									
<b>2DL3R78KE-TFC-800</b>	208/230-3									
<b>2DL3R78KE-TFD-800</b>	460-3	2DL3R78K*		2DL3-075*				MRH*-0760		
2DL3R78KE-TFE-800	575-3									
<b>3DA3F28KE-TFC-800</b>	208/230-3									
<b>3DA3F28KE-TFD-800</b>	460-3	3DA3F28K*		3DA3A060*	3DA3-060*	3DA1-0600	9DA*-0600	9RB*-0765		
3DA3F28KE-TFE-800	575-3									
<b>3DA3R10ME-TFC-800</b>	208/230-3									
<b>3DA3R10ME-TFD-800</b>	460-3	3DA3R10M*								
3DA3R10ME-TFE-800	575-3			3DA3A075*	3DA3-075*	3DA1-0750	9DA*-0750	9RC*-101*		
<b>3DADF28KE-TFC-800</b>	208/230-3									
<b>3DADF28KE-TFD-800</b>	460-3	3DADF28K 3DHHF28K								
<b>3DB3F33KE-TFC-800</b>	208/230-3									
<b>3DB3F33KE-TFD-800</b>	460-3	3DB3F33K*		3DB3A075*	3DB3-075*	3DB1-0750	9DB*-0750	9RS*-076*		
3DB3F33KE-TFE-800	575-3									
3DBDF33KE-TFC-800	208/230-3									
3DBDF33KE-TFD-800	460-3	3DBDF33K*								
3DBDF33KE-TFE-800	575-3									
<b>3DB3R12ME-TFC-800</b>	208/230-3									
<b>3DB3R12ME-TFD-800</b>	460-3	3DB3R12M*		3DB3A100*	3DB3-100*	3DB1-1000	9DB*-1000	9RS*-150*		
3DB3R12ME-TFE-800	575-3									
<b>3DBDR12ME-TFC-800</b>	208/230-3									
<b>3DBDR12ME-TFD-800</b>	460-3	3DBDR12M*								
3DBDR12ME-TFE-800	575-3									
<b>3DADR10ME-TFC-800**</b>	208/230-3									
<b>3DADR10ME-TFD-800**</b>	460-3	3DEHR10ME		3DEHA075E	3DEH-075E					
3DADR10ME-TFE-800**	575-3									
3DE3R10ME-TFC-800	208/230-3									
<b>3DE3R10ME-TFD-800</b>	460-3	3DE3R10M*		3DE3A075*	3DE3-075*					
3DE3R10ME-TFE-800	575-3									
<b>3DF3F40KE-TFC-800</b>	208/230-3									
<b>3DF3F40KE-TFD-800</b>	460-3	3DF3F40K*		3DF3A090	3DF3-090*	3DF1-0900	9DF*-0900			
3DF3F40KE-TFE-800	575-3									

(\*) oil types (E), (L), & (O) & variations (1), (2) & (3) (\*\*) 943-0035-00 module is also required  
Wholesaler compressor models in **bold** are **stocked in Mount Comfort**. Some model compressors may have more than one possible replacement model dependent on capacity matching.

Wholesale Replacement Model	Voltage	OEM Discus Model		Obsolete Discus Models (Prior to 2006)				Conventional Reed Models		
		Discus II (2006-current)	Discus III (2012+)							
3DF3R15ME-TFC-800	208/230-3	3DF3R15M*		3DF3A120*	3DF3-120*					
3DF3R15ME-TFD-800	460-3									
3DFDF40KE-TFC-800**	208/230-3	3DGHF40KE		3DGHA090E	3DGH-090E					
3DFDF40KE-TFD-800**	460-3									
3DFDF40KE-TFE-800**	575-3									
3DPHR12ME-TFC-800	208/230-3	3DPHR12ME		3DPHA100E	3DPH-100E					
3DPHR12ME-TFD-800	460-3									
3DPHR12ME-TFE-800	575-3									
3DP3R12ME-TFC-800	208/230-3	3DP3R12ME		3DP3A100*	3DP3-100E					
3DP3R12ME-TFD-800	460-3									
3DP3R12ME-TFE-800	575-3									
3DSDF46KE-TFC-800**	208/230-3	3DRHF46KE		3DRHA100E	3DRH-100E					
3DSDF46KE-TFD-800**	460-3									
3DSDF46KE-TFE-800**	575-3									
3DS3F30K0-TFC-800	208/230-3	3DS3F30K0		3DS3A0750	3DS3-0750	3DS1-0750				
3DS3F30K0-TFD-800	460-3									
3DS3F30K0-TFE-800	575-3									
<b>3DS3F46KE-TFC-800</b>	<b>208/230-3</b>	3DS3F46K*		3DS3A100*	3DS3-100	3DS1-1000	9DS*-1000	4RA3-1000		
3DS3F46KE-TFD-800	460-3									
3DS3F46KE-TFE-800	575-3									
<b>3DS3R17ME-TFC-800</b>	<b>208/230-3</b>	3DS3R17M*		3DS3A150*	3DS3-150*	3DS1-1500	9DS*-1500	4RA3-2000		
3DS3R17ME-TFD-800	460-3									
3DS3R17ME-TFE-800	575-3									
3DSDR17ME-TFC-800**	208/230-3	3DTHR17ME		3DTHA150E	3DTH-150E					
3DSDR17ME-TFD-800**	460-3									
3DSDR17ME-TFE-800**	575-3									
3DT3R17ME-TFC-800	208/230-3	3DT3R17M*		3DT3A150*	3DT3-150*					
3DT3R17ME-TFD-800	460-3									
3DT3R17ME-TFE-800	575-3									
4DA3F47KE-TSE-800	575-3	4DA3F47K*		4DA3A101E	4DA3-101E					
4DA3F47KE-TSK-800	208/230/460-3									
4DADF47KE-TSK-800	208/230/460-3	4DADF47KE								
4DA3R12ME-TSK-800	208/230/460-3	4DA3R12ME		4DA3A100E	4DA3-100E	4DA1-1000		4RL*-1500		
4DADR12ME-TSK-800	208/230/460-3	4DADR12ME								
4DA3R18ME-TSE-800	575-3	4DA3R18ME		4DA3A200*	4DA3-200*	4DA1-2000		4RA3-2000		
4DA3R18ME-TSK-800	208/230/460-3									
4DADR18ME-TSE-800	575-3	4DADR18ME								
4DADR18ME-TSK-800	208/230/460-3									
4DBNF54KE-TSE-800	575-3	4DBNF54KE 4DBXF54KE								
4DBNF54KE-TSK-800	208/230/460-3									
4DBXF54KE-TSK-800	208/230/460-3									
4DBDR20ME-FSD-800	460-3	4DBDR20ME	4DBXR20ME							
4DBDR20ME-TSK-800	208/230/460-3									
4DC3R20ME-TSE-800	575-3	4DB3R20M*	4DCNR20ME	4DC3A220*	4DC3-220*					
4DC3R20ME-TSK-800	208/230/460-3	4DC3R20M*								
4DE3R18ME-TSE-800	575-3	4DA3R18ME		4DE3A200*	4DE3-200*	4DE1-2000		4RE2-2000	4RA3-2000	
4DE3R18ME-TSK-800	208/230/460-3	4DE3R18M*								
4DH3R16ME-TSK-800	208/230/460-3	4DH3R16ME	4DHNR16ME	4DH3A150E	4DH3-150E	4DH1-1500				
4DADR22ME-TSE-800	575-3	4DHDR22ME	4DHXR22ME							
4DADR22ME-TSK-800	208/230/460-3									
4DK3R22ME-TSE-800	575-3	4DH3R22M*	4DHNR22ME	4DH3A250*	4DH3-250*	4DH1-2500				
4DK3R22ME-TSK-800	208/230/460-3									
4DJ3R28ME-TSE-800	575-3	4DJ3R28M*	4DJNR28ME	4DJ3A300*	4DJ3-300	4DJ1-3000		4RJ*-3000	6RA4-3000	
4DJ3R28ME-TSK-800	208/230-3									
4DK3R22ME-TSE-800	575-3	4DH3R22M*	4DKNR22ME	4DK3A250*	4DK3-250*	4DK1-2500		4RJ*-3000	4RR*-3000	6RA4-3000
4DK3R22ME-TSK-800	208/230/460-3	4DK3R22M*								

(\*) oil types (E), (L), & (O) & variations (1), (2) & (3) (\*\*) 943-0035-00 module is also required  
Wholesaler compressor models in **bold** are **stocked in Mount Comfort**. Some model compressors may have more than one possible replacement model dependent on capacity matching.

Wholesale Replacement Model	Voltage	OEM Discus Model		Obsolete Discus Models (Prior to 2006)				Conventional Reed Models		
		Discus II (2006-current)	Discus III (2012+)							
4DL3F63KE-TSE-800	575-3	4DL3F63K*	4DKNF63KE	4DP3A150*	4DP3-150*	4DP1-1500				
<b>4DL3F63KE-TSK-800</b>	208/230/460-3	4DH3F63K*								
4DHDF63KE-TSE-800	575-3	4DHDF63KE	4DHXF63KE							
4DHDF63KE-TSK-800	208/230/460-3									
4DP3F63KE-TSE-800	575-3	4DP3F63K*	4DKNF63KE	4DP3A150*	4DP3-150*	4DP1-1500				
4DP3F63KE-TSK-800	208/230/460-3	4DK3F63K								
4DR3R28ME-TSE-800	575-3									
4DJDR28ME-TSE-800	575-3	4DJ3R28M*	4DRNR28ME	4DR3A300*	4DR3-300*	4DR1-3000	4RR1-3000	4RJ1-3000		
4DJDR28ME-TSK-800	208/230/460-3	4DR3R28M*								
4DR3R28ME-TSK-800	208/230/460-3									
4DJDF76KE-TSE-800	575-3	4DJDF76KE	4DJXF76KE							
4DJDF76KE-TSK-800	208/230/460-3									
4DS3F76KE-TSE-800	575-3	4DS3F76K*	4DRNF76KE	4DS3A220*	4DS3-220*	4DS1-2200	6RL1-2500			
4DS3F76KE-TSK-800	208/230/460-3	4DR3F76K*								
4DT3F76KE-TSE-800	575-3	4DT3F76K*	4DJNF76KE	4DT3A220*	4DT3-220*	4DT1-2200	6RL1-2500			
4DT3F76KE-TSK-800	208/230/460-3	4DJ3F76K*								
6DB3R32ME-TSE-800	575-3	6DB3R32M*	6DBNR32ME	6DB3A300*	6DB3-300*					
6DB3R32ME-TSK-800	208/230/460-3									
6DC3F93KE-TSE-800	575-3	6DC3F93K*	6DKNF93KE	6DC3A270*	6DC3-270*					
6DC3F93KE-TSK-800	208/230/460-3	6DK3F93K*								
6DD3F93KE-TSE-800	575-3	6DD3F93K*	6DPNF93KE	6DD3A270*	6DD3-270*					
6DD3F93KE-TSK-800	208/230/460-3	6DP3F93K*								
6DE3F11ME-TSE-800	575-3	6DE3F11M*	6DRNF11ME	6DE3A300*	6DE3-300*					
6DE3F11ME-TSK-800	208/230/460-3	6DR3F11M								
6DF3F11ME-TSE-800	575-3									
6DF3F11ME-TSK-800	208/230/460-3	6DF3F11M*		6DF3A300*	6DF3-300*					
6DRDF11ME-TSK-800	208/230/460-3	6DS3F11M*								
6DMDR37ME-TSN-800	230/460-3									
6DN3R37ME-TSE-800	575-3	6DG3R37M*	6DGNR37ME	6DG3A350*	6DG3-350*					
6DN3R37ME-TSN-800	230/460-3									
6DP3R23ME-TSK-800	208/230/460-3	6DH3R23ME	6DHNR23ME	6DH3A200E	6DH3-200E	6DH1-2000				
6DP3R35ME-TSE-800	575-3	6DH3R35M*	6DHNR35ME	6DH3A350*	6DH3-350*	6DH1-3500	6RH1-3500			
6DP3R35ME-TSK-800	208-230/460-3									
6DS3R40ME-TSE-800	575-3	6DJ3R40M*		6DJ3A400*	6DJ3-400*	6DJ1-4000				
6DR3R40ME-TSK-800	208/230/460-3									
6DP3R23ME-TSK-800	208/230/460-3	6DK3R23ME		6DK3A200E	6DK3-200E	6DK1-2000				
6DP3R35ME-TSE-800	575-3	6DH3R35M*	6DKNR35ME	6DK3A350*	6DK3-350*	6DK1-3500	6RK1-3500	6RH1-3500		
6DP3R35ME-TSK-800	208/230/460-3	6DK3R35M*								
6DL3F93KE-TSE-800	575-3	6DL3F93K*	6DHNF93KE	6DL3A270*	6DL3-270*	6DL1-2700	6RT1-3000			
6DL3F93KE-TSK-800	208/230/460-3	6DH3F93K*								
6DN3R37ME-TSE-800	575-3	6DG3R37M*	6DMNR37ME	6DM3A350*	6DM3-350*		6RR2-4000			
6DN3R37ME-TSN-800	230/460-3	6DM3R37M*								
6DN3R37ME-TSE-800	575-3	6DG3R37M*	6DNNR37ME	6DNNR37ME	6DN3A350*	6DN3-350*	6RS2-4000			
6DN3R37ME-TSN-800	230/460-3	6DM3R37M*								
6DN3R37ME-TSN-800	230/460-3	6DN3R37M*								
6DP3R35ME-TSE-800	575-3	6DH3R35M*	6DPNR35ME	6DP3A350*	6DP3-350*	6DP1-3500	6RP1-3500	6RK1-3500	6RH1-3500	
6DP3R35ME-TSK-800	208/230/460-3	6DK3R35M*								
6DRDR40ME-TSE-800	575-3									
6DRDR40ME-TSE-899	575-3									
6DRDR40ME-TSN-800	230/460-3	6DJ3R40M*		6DR3A400*	6DR3-400*	6DR1-4000				
6DS3R40ME-TSE-800	575-3	6DR3R40M*								
6DS3R40ME-TSN-800	230/460-3									
6DS3R28ME-TSE-800	575-3									
6DS3R28ME-TSK-800	208/230/460-3	6DS3R28ME		6DS3A300E	6DS3-300E					
6DS3R40ME-TSE-800	575-3	6DJ3R40M*		6DS3A400*	6DS3-400*	6DS1-4000				
6DS3R40ME-TSN-800	230/460-3	6DR3R40M*								
6DS3R40ME-TSN-800	230/460-3	6DS3R40M*								

(\*) oil types (E), (L), & (O) & variations (1), (2) & (3) (\*\*\*) 943-0035-00 module is also required  
Wholesaler compressor models in **bold** are **stocked in Mount Comfort**. Some model compressors may have more than one possible replacement model dependent on capacity matching

Wholesale Replacement Model	Voltage	OEM Discus Model		Obsolete Discus Models (Prior to 2006)				Conventional Reed Models			
		Discus II (2006-current)	Discus III (2012+)								
6DT3F11ME-TSE-800	575-3	6DT3F11M* 6DJ3F11M*		6DT3A300*	6DT3-300*	6DT1-3000					
6DT3F11ME-TSK-800	208/230/460-3										
6DY3R32ME-TSE-800	575-3	6DB3R32M* 6DW3R32M*	6DWNR32ME	6DW3A300*	6DW3-300*						
6DY3R32ME-TSK-800	208/230/460-3										
6DY3R32ME-TSE-800	575-3	6DB3R32M* 6DW3R32M* 6DY3R32M*	6DYNR32ME	6DY3A300*	6DY3-300*						
6DY3R32ME-TSK-800	208/230/460-3										
6DZNF13ME-AWD-800	460-3		6DUNF13ME 6DVNF13ME 6DZNF13ME								
6DVXF13ME-TSE-800	575-3										
6DVXF13ME-AWD-800	460-3										
6DZNF13ME-TSE-800	575-3										
6DVXR49ME-AWD-800	460-3		6DUNR49ME 6DVNR49ME 6DZNR49ME								
6DVXR49ME-TSE-800	575-3										
6DZNR49ME-AWD-800	460-3										
6DZNR49ME-TSE-800	575-3										

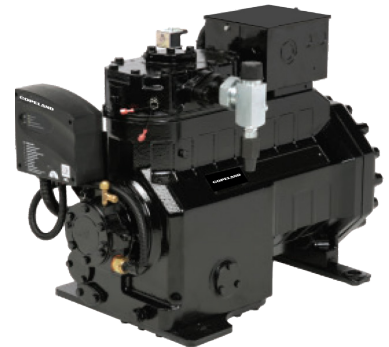
Discus III compressor models, 6DJ, 6DR or 6DS being replaced by a Discus II, require standard bottom plate model ending in 899.

(\*) oil types (E), (L), & (O) & variations (1), (2) & (3) (\*\*) 943-0035-00 module is also required  
Wholesaler compressor models in **bold** are **stocked in Mount Comfort**. Some model compressors may have more than one possible replacement model dependent on capacity matching.

Wholesale Replacement Model	Voltage	OEM Discus Model	
		Discus II	Discus III
<b>6DS3F11METSE899</b>	575-3		6DSNF11ME*
6DS3F11METSK899	208/230/460-3		
<b>6DS3R40METSE899</b>	575-3		6DJNR40ME*
6DS3R40METSK899	208/230/460-3		
<b>6DS3R40METSE899</b>	575-3		6DRNR40ME*
6DS3R40METSK899	208/230/460-3		
<b>6DS3R40METSE899</b>	575-3		6DSNR40ME*
6DS3R40METSK899	208/230/460-3		
<b>6DS3F11METSE899</b>	575-3		6DJNF11ME*
6DS3F11METSK899	208/230/460-3		

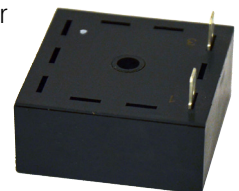
### Copeland Discus Digital Compressor Benefits

- Precise temperature and pressure control, extending shelf life and reducing product shrinkage
- Increases compressor reliability by reducing compressor cycling
- Increases energy efficiency by increasing suction pressure set point



### Drop-in replacement for 3D Moduload using a digital compressor or digital retrofit kit

- Does not require a digital controller
- Uses existing wiring and control circuit
- 50% capacity and reduced energy consumption regardless of compression ratio
- MT and LT capable
- Ideal for condensing units



**943-0035-00**  
cycle timer module kit  
Note: 50% or 100% capacity

### Target applications

- Walk-in cooler/freezer
- Process chiller

# The mobile toolbox

FREE mobile apps, designed to help you service systems more efficiently while on the job.



## Copeland mobile

Mobile access to over 30 years of Copeland compressor product information.



## AE bulletins

Serves as a technical reference to use whenever or wherever you may need it.



## HVAC check & charge

Instant mobile refrigerant charge calculator for HVACR applications.



## Copeland E-Saver

Quickly calculate annual cost savings of high efficiency systems.



## HVACR fault finder

On-site compressor troubleshooting for air conditioning and refrigeration applications.



## WR mobile

New mobile app provides on-the-go access to White-Rodgers product data.



## Sensi

The Sensi Wi-Fi programmable thermostat gives you complete control of your comfort. Anytime. Anywhere.



## Copeland PT Pro

On-the-go access to pressure and temperature conversions.



## Copeland X-Check

A user-friendly tool that will cross-reference a competitor's number over to the Copeland valve, control, or system protector.



## Vilter docs

One-touch access to Vilter's support documents.



## Vilter select lite

Provides Vilter Select users mobile access to their projects and compressor ratings while offline.



Scan to learn more or visit [copeland.com/MobileApps](http://copeland.com/MobileApps)



### ***About Copeland***

Copeland is a global leader in sustainable heating, cooling, refrigeration and industrial solutions. We help commercial, industrial, refrigeration and residential customers reduce their carbon emissions and improve energy efficiency. We address issues like climate change, growing populations, electricity demands and complex global supply chains with innovations that advance the energy transition, accelerate the adoption of climate friendly low GWP (Global Warming Potential) and natural refrigerants, and safeguard the world's most critical goods through an efficient and sustainable cold chain. We have over 18,000 employees, with feet on the ground in 50 countries - a global presence that makes it possible to serve customers wherever they are in the world and meet challenges with scale and speed. Our industry-leading brands and diversified portfolio deliver innovation and technology proven in over 200 million installations worldwide. Together, we create sustainable solutions that improve lives and protect the planet today and for future generations.

To learn more, visit [copeland.com](https://www.copeland.com)

2020ECT-42 R2 (3/21) ©2025 Copeland LP.

**COPELAND**