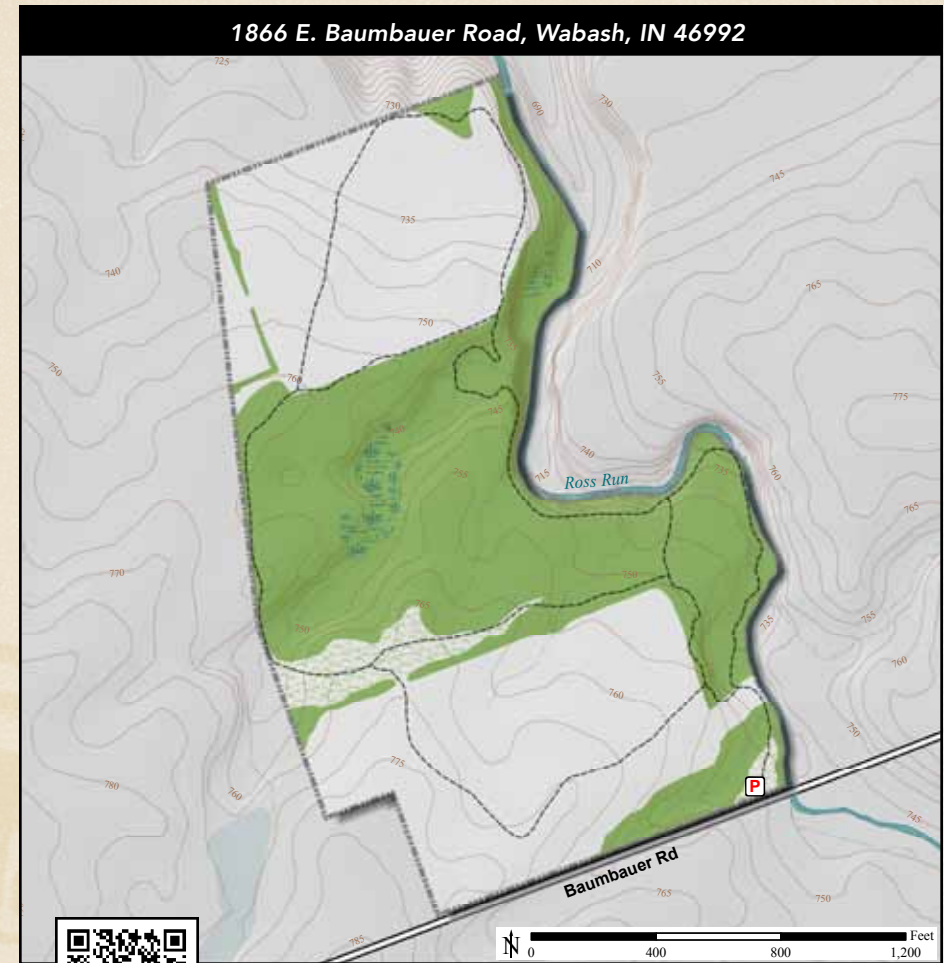



ACREAGE: **72.0** | YEAR ACQUIRED: **2007**



 Hathaway Preserve at Ross Run is a spectacular gorge with waterfalls, reef fossils, exposed bedrock and vertical cliffs as high as 75 feet. On this terrain are mature oaks, some with trunks over four feet in diameter, as well as a diverse understory beneath the oaks and a spectacular display of spring wildflowers. The Ross Run gorge is an impressive natural feature with uncommonly high geological, ecological and aesthetic values.



Wild Columbine

DIRECTIONS:

From Wabash at SR 13 and US 24, take US 24 east 2.0 miles to SR 524 and turn right toward Lagro. Travel east 1.5 miles to SR 524 (Davis St.) and turn right (south). Travel SR 524 for 1.5 miles to Baumbauer Rd., and turn right (west). Travel 2.2 miles to the preserve on the right.

