



An Independent Chapter of



American College of
Healthcare Executives
for leaders who care®

President's Letter

Dear GAHE Membership,

As we exit our fourth surge of the COVID-19 Pandemic and enter our holiday season, it is a perfect time to reflect on our professional and personal lives. We have so much to be individually and collectively thankful for at work and at home. Despite the ongoing stressors this global pandemic has presented over the past 20 months ...we continue to endure.

The often-overused phrase of “resilience” continues to carry more weight than ever. In healthcare, this could not be truer as we see the lingering impact of COVID shift from mask mandates and supply shortages ...to vaccine mandates and labor shortages. Yet we endure.



*R. Trent Lind, FACHE
GAHE President*

IN THIS ISSUE:

BOARD SLATE ANNOUNCED
DISTINGUISHED SERVICE AWARDS
SCHOLARSHIP COMMITTEE
GAHE STUDENT CORNER
SPONSOR SPOTLIGHT
UPCOMING EVENTS
MEMBERSHIP REPORT
ACHE NATIONAL NEWS
SPONSORSHIP
CONNECT WITH GAHE

Please join me in taking this moment of reflection to express your gratitude to a colleague, to a friend and to a loved one. We can all think of a handful of individuals in our professional and personal lives who have helped us to be resilient and endure.

With that thought in mind, I would like to take a moment to express my gratitude to my GAHE Board of Directors for leading this organization through the most challenging two years in our chapter's existence. The countless hours of work that our volunteer Board (and other committee volunteers) have put into helping GAHE fulfill our mission has produced amazing results. Here are just a few examples of these achievements in 2021 alone (January thru November):

GAHE Educational Sessions:

- **8 virtual face-to-face (F2F) programs and one in-person F2F program offering 13.5 F2F hours**
- **20 webinars and Clubhouse programs offering 20 qualified hours**
- **Our five-week virtual Board of Governors exam review course offering 19.5 qualified hours**

Membership Growth:

- **236 New Members -- 1,530 on roster**

ACHE Fellow Advancement:

- **13 New Fellows**
- **83 Recertified Fellows**

Thank you GAHE for allowing me to serve as your President for these past two years, it has truly been an honor and privilege. As I pass the gavel to our next President, I am confident our chapter will continue to “lead the way” for our members here in Georgia and as an example for other chapters across ACHE.

Sincerely,

R. Trent Lind, FACHE

President of the Georgia Association of Healthcare Executives

GAHE 2022 Board of Directors Slate

Election to Be Held at November 18 Business Meeting

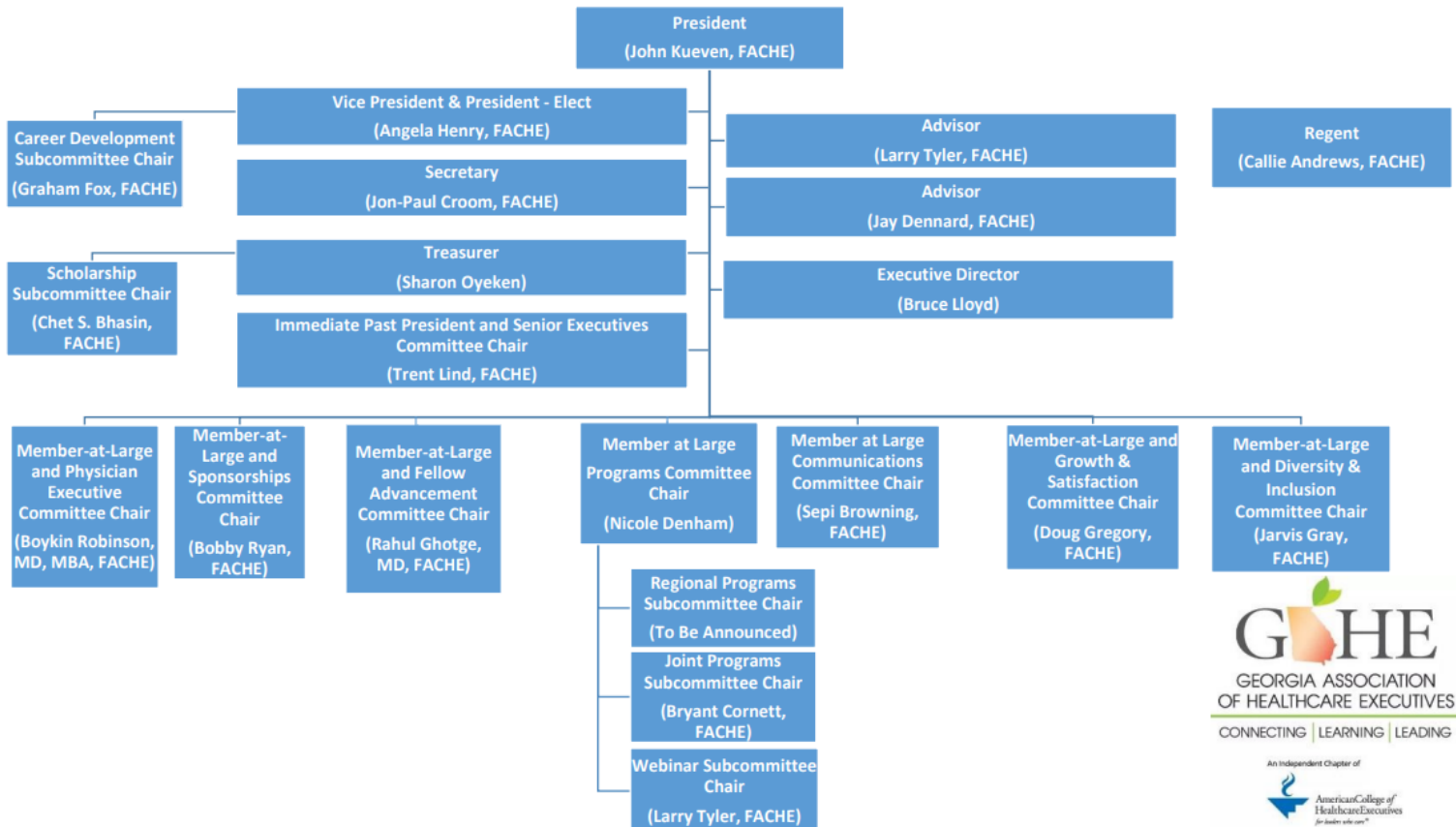
The Nominating Committee of the Georgia Association of Healthcare Executives (GAHE) has met and offers the following slate of Officers and Directors for your consideration for the 2022 chapter year. Voting will take place at the GAHE Annual Meeting to be held virtually via Zoom on Thursday, November 18, 2021, from noon to 1:30 pm ET as part of our monthly lunch and learn. Click the names of candidates listed below to view their bios or LinkedIn profiles.

Candidates:

- President – **John Kueven**, MHA, RN, FACHE (automatic succession)
- Vice President – **Angela Henry**, FACHE
- Secretary – **Jon-Paul Croom**, MSHA, MBA, FACHE,
- Treasurer – **Sharon Oyekan**, MBA, PHR, SHRM-CP
- Immediate Past President – **Trent Lind**, MSHA, MBA, FACHE, (automatic succession)
- At-large Member – **Sepi Browning**, FHIMSS, PMP, FACHE
- At-large Member – **Nicole Denham**, MHA, RN
- At-large Member – **Rahul Ghotge**, MD, MBA, FACHE
- At-large Member – **Jarvis T. Gray**, MHA, MPM, CMQ-OE, CLSSMBB, PM, FACHE
- At-large Member – **Douglas Gregory**, RN, FACHE
- At-large Member – **Boykin Robinson**, MD, MBA, FACHE
- At-large Member – **Bobby Ryan**, MBA, FACHE
- ACHE Regent Director – **Callie Andrews**, MBA, MSHA, FACHE (ex officio)

The proposed **2022 GAHE organizational structure**, including the candidates above and committee and subcommittee chairs, is shown below. With the exception of the Regent Director, President, and Immediate Past President, officers shall be elected by a majority of the voting membership present at the annual meeting of the membership. The Vice President automatically succeeds to the office of President and the President automatically succeeds to the office of

2022 GAHE Organizational Structure (*Proposed*)

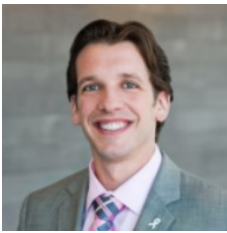


Member News

Five GAHE Members Receive ACHE's Distinguished Service Award

ACHE has recognized five outstanding GAHE members who have provided leadership and volunteerism within ACHE. The ACHE Recognition Program celebrates members' commitment to the healthcare management profession. Through this program, ACHE members earn points for volunteer activities at both the local and national level. You can learn about these awards and how you also can earn this recognition at www.ache.org/abt_ache/awards/acherecognition.cfm.

The following members will be recognized at GAHE's Annual Meeting on November 18:



*Taylan Bozkurt, FACHE,
Chief Technology Officer
& VP of Operations,
Burn & Reconstructive
Centers of America;
GAHE Treasurer*



*Ann R. Brown, FACHE,
Medical Center Dir &
CEO, Atlanta VA
Healthcare System*



*Mary A. Germann, RN,
FACHE, GAHE Board
Advisor*



*John Kueven, FACHE,
SVP & Hospital Presi-
dent, Wellstar Cobb
Hospital; GAHE Vice
President/President
Elect*



*Bobby Ryan, FACHE,
Chief Growth Officer,
ApolloMD; GAHE Board
Member at Large*

Volunteer Opportunities

Call for Volunteers -- Scholarship Committee

by Chet Bhasin

The newly created GAHE Scholarship committee has 1-2 open seats for a GAHE member to join. The goal of this committee is to come up with the framework for who, how, and when to issue scholarship dollars. Earlier this year the GAHE board committed dollars to issue back as scholarships.

Our first few months will be used to create the framework and then we will move onto reviewing applications. Interested members can contact Chet Bhasin (Committee Chair) at cbhasin1@gmail.com to learn more.

The Committee would like to begin granting scholarships in 2022, and more details will be announced soon.



*Chet Bhasin, FACHE
Board Member At
Large and Scholarship
Committee Chair*



Call for Webinar Proposals

Do you have an idea for a webinar that would be appropriate for educating GAHE's membership? If so, GAHE's Webinar Subcommittee invites you to contribute to our [Call for Webinar Proposals](#).

The Webinar Subcommittee is planning webinars for next year, so send in your proposal now.

GAHE Student Corner

A section tailored for GAHE student associates, written by students.



UGA's Student ACHE Chapter Holds In-Person Networking Event

by Austyn Barnes, University of Georgia, Class of 2022, Terry College of Business

This Fall, the ACHE UGA Student Chapter is excited to be back in action! UGA ACHE partnered with UGA Public Health Association (PHA) to organize an In-Person Networking Event on October 21, 2021. ACHE UGA Chapter Vice President and Second-year Master of Public Health student Carlyncia McDowell led the workshop. She, first, explained various forms of networking and their impact on one's career. Between ACHE and GAHE events, internships, and community involvement, students were presented with a number of opportunities to learn from and connect with peers and mentors. Students discussed their own networking experiences and the importance of learning from others in our field and creating business opportunities.

Next, students applied their skills by rehearsing their "Elevator Pitch," a quick self-introduction to create an effective impression and form professional connections. Students discussed the role of social media and how to build lasting connections online by managing your online presence and staying connected with followers. Carlyncia shared ACHE and UGA networking resources with the students, such as the ACHE Career Resource Center and UGA's Career Center.

Finally, students practiced their new skills in a Mock Networking Event. Students rotated throughout the room, almost like "speed dating," and answered questions such as "What is the most valuable piece of career advice you've been given?" or "If you could instantly be an expert in a subject, what would it be?" This fun exercise offered an excellent way for peers to connect with one another while practicing their newfound skills. Overall, the event proved to be very valuable. After October's event, UGA ACHE is looking forward to an exciting year ahead!

If any GAHE members are interested in connecting with UGA's Student Chapter of ACHE, please reach out to our President Aubrey (AJ) Smith at aubreyksmith@uga.edu. We would love to invite you as a guest speaker and/or talk through any other opportunities for us to collaborate!

About Our Student Member News Section

GAHE's Communication Committee has welcomed several student members who have volunteered to coordinate the student section of the newsletter. This section features activities at our Higher Education Network (HEN) schools as well as "Students on the Move." For more information, contact Bruce Lloyd at gahe.org@gmail.com.

Sponsor News

GAHE Gold Sponsor Highlight :

Vocera Strives to Simplify Workflows and Improve Communications

GAHE welcomed Vocera Communications, Inc., as a Gold Sponsor earlier this year. The mission of Vocera is to improve the lives of healthcare professionals, patients, and families.



Founded in 2000, Vocera provides clinical communication and workflow solutions that help protect and connect team members, increase operational efficiency, enhance quality of care and safety, and humanize the healthcare experience. More than 2,300 facilities worldwide, including nearly 1,900 hospitals and healthcare facilities, have selected Vocera solutions to enable their workforce to communicate and collaborate with co-workers and engage with patients and families.

Mobile workers can choose the right device for their role or task, including smartphones or one of the company's wearable communication devices, and use voice commands to easily reach people by name, role, or group. The hand-free Vocera Smartbadge was named to *TIME's* list of the 100 Best Inventions of 2020.

Vocera solutions can integrate with more than 150 clinical and operational systems, including electronic health records, nurse call systems, ventilators, physiological monitors, and more. In addition to healthcare, Vocera solutions are found in aged-care facilities, veterinary hospitals, schools, luxury hotels, retail stores, power facilities, and more. Visit www.vocera.com to learn more and follow @VoceraComm on Twitter.

Find Out More About GAHE Sponsorship

If your organization is interested in becoming a GAHE sponsor, visit our sponsorship page at <https://gahe.org/sponsors/> and learn more about sponsorship levels, benefits, and pricing. Interested in sponsoring one of GAHE's webinars? Here are the fees for webinar sponsorships:

- Educational Webinar — \$500 for event sponsorship
- Leadership Series Webinar — \$1,000 for event sponsorship

For more sponsorship information, please contact: sponsorship@gahe.org.

Upcoming Events



November 17, Free Clubhouse Event

"If You Don't Know, Now You Know: Top Healthcare Challenges that Elude Us," featuring Callie Andrews, MBA, MSHA, FACHE. Noon to 1:00 pm ET, 1 hour of qualified credit.

November 18 GAHE Monthly Virtual Lunch and Learn and Annual Meeting

"Ethical Challenges in Healthcare Leadership, Noon to 1:30 pm. 1.5 hours of ACHE Face-to-Face credit.

Register for All GAHE Events at:

<https://gahe.org/events>

January 20 GAHE Monthly Virtual F2F Lunch and Learn

More details and registration will be announced soon.

Mark your calendar next year for the face-to-face programs on the third Thursday of each month. Events will continue to be virtual for now.

Membership Report (August 1-October 31 2021)

Fellows Recognition and New Members

Congratulations to these GAHE members who achieved their **Fellow of ACHE (FACHE)** credential. Please take a moment to congratulate your colleagues for their commitment to advancing their healthcare careers:

- Vanessa M. Bramble, MS, MBA, RT, FACHE
- Jay E. Carmichael, FACHE
- Jeffrey S. Cunningham, FACHE
- Michael N. Hendell, FACHE
- Robert M. Johnson, FACHE
- Alex X. Le, FACHE
- Cameron Pirouz, FACHE
- Robert B. Reeder, FACHE
- Sean Riley, FACHE
- Joseph S. Williams, FACHE

If you are interested in learning how to become an ACHE Fellow, [click here](#) to view information on ACHE's website.

We recognize the following members who recently recertified their Fellow status:

J. Stephen Aslinger, FACHE	Rahul Ghotge, MD, FACHE	Polly K. Parks, FACHE
Donald R. Avery, FACHE	Srinivas Ginjupalli, MD, FACHE	John D. Quinlivan, Jr., FACHE
Carol T. Barrell, FACHE	Douglas Gregory, RN, FACHE	Lt Col Marc A. Rittberg, FACHE
Chet S. Bhasin, FACHE	Thomas E. Grondin, FACHE	David W. Sides, FACHE
Lisette D. Branscomb, LFACHE	Julia H. Jones, FACHE	Patrick B. Staples, FACHE
Leonard T. Carter, Jr., RN, FACHE	M. Lisa Jones, FACHE	Kurt M. Stuenkel, FACHE
James D. Forstner, FACHE	Rodney J. Laster, FACHE	Patricia G. Webb, FACHE(R)
Graham M. Fox, FACHE	Matthew Osucha, FACHE	Sherry N. Williams, FACHE

We welcome the following new members of ACHE in the Georgia chapter and hope to meet you soon:

Joshua Akins	Benjamin D. Goldberg	Shannon M. Newell
Mohammed AlAhmari, PhD	Will Green, MSM, PMP	Samuel B. Phillips, RN, MBA
Erin Anders	Giselle S. Gursoy, BS	Matthew Piepenbring
Anthony L. Bammer	George Hamil, Jr.	Joel L. Pollack
Rashida La Barrie, MD, MS	Owen Hendricks	George D. Pressley, MBA
Jacob Berry	Edwin J. Herrod, MHA	Charles M. Robinson
Keisha Bonhomme	Jody M. Hughes, MD	Rocio R. Rodriguez
Eric Boyette	Yasamine Jalinouszadeh, Esq.	Raymond R. Samuel, Jr., MBA
Jennifer Butler, MD	Kyndra Jones	Raina Sanford
Ann Marie Buchanan-Cummings, DNP, RN, APRN	Melissa Jordan, EdD, Dr.	Marie Scales
MAJ William R. Capp	Peter Jung	Jennifer Schuck
Joy Chibuzo	Michelle Kimrey	Mark G. Stevens, MBA, PT, MS
Carrie Cunningham	Carey Lamphier, BSN	Jacob H. Stone
Erika Crawford	Haylee Leiner	Mawuna Togbenou
Lynn M. Durham, EdD	John E. Lepto, IV	Jennifer Williams, PhD
Efe Efemini	Shanquia Lymon	Brittany C. Ximines
Anne Ervin	Annelise Marianetti	Dennis Yelverton
Jennifer B. Fields	Meriel McCollum, PhD, RN	Stacy Ziglar
Chableau Ford	Beverley Needham	
	Jonathan B. Newell	

ACHE Congress Will Be In Person March 28-31 in Chicago

Virtual Leadership Symposium Will Be April 11-12

Join leaders from across the care continuum in-person at ACHE's 2022 Congress on Healthcare Leadership March 28-31 at the Hyatt Regency Chicago. Gather solutions, tools and resources to advance healthcare in your organizations and communities. Select from more than 130 sessions to personalize your schedule.



The safety of Congress participants, faculty, exhibitors and staff remain a top priority. Registration opens December 1.



To maximize the experience for both in-person and virtual attendees, we will host a separate **Virtual Leadership Symposium**, April 11–12, with unique content. The event will offer up to 6 ACHE Face-to-Face Education credits. You can bundle this virtual event with your Congress registration or register separately. Congress registrants can receive a discounted registration to the Virtual Leadership Symposium by adding the event to their in-person Congress registration before March 31.

Education and networking sessions will take place Monday through Wednesday, March 28–30. Federal Sector events will be held Thursday, March 31. Bootcamps, Convocation and other pre-Congress events will be held Sunday, March 27.

Registration will open December 1. Register before the early bird deadline on March 7 to save \$300. ACHE encourages early registration as sessions fill up fast. On-site registration is available throughout Congress. Visit the [ACHE Congress website](#) for more information.

Find New Opportunities with ACHE's Job Center

Did you know you can apply for healthcare management positions quickly and easily with ACHE's Job Center? This member-exclusive resource allows you to search through nearly 1,800 open positions across the U.S. based on preferences such as location and desired salary.

ACHE's Job Center also lists internships and fellowships available to help students and recent graduates navigate new opportunities. To gain more exposure to potential employers, all members have the option of posting a resume for review. To provide additional value, the Job Center offers a Career Learning Center to help you enhance your resume and leave a lasting positive impact during your next interview. To take advantage of these resources and more, visit <http://www.ache.org/JobCenter>.

Thank You to GAHE's 2021 Sponsors

Platinum Sponsor



Gold Sponsor



Silver Sponsor



Find Out More About GAHE Sponsorship

If your organization is interested in becoming a GAHE sponsor, visit our sponsorship page at <https://gahe.org/sponsors/> and learn more about sponsorship levels, benefits, and pricing.

Interested in sponsoring one of GAHE's webinars? Here are the fees for webinar sponsorships:

- Educational Webinar — \$500 for event sponsorship
- Leadership Series Webinar — \$1,000 for event sponsorship

For more sponsorship information, please contact:



sponsorship@gahe.org

CONNECT WITH GAHE

GAHE is on social media – so remember to connect with us for the most up to date news and photos...

- Linked In: www.linkedin.com/groups/1121747
- Twitter: @GAHEConnect -- twitter.com/GAHEConnect
- Facebook: www.facebook.com/GAHEConnect



CALL FOR CONTENT

Content submissions to the GAHE newsletter are for reviewed for appropriateness by the Communications Committee. Please send your contributions, including articles, news, member accomplishments and photos to bruce.lloyd@gahe.org, no later than close of business by the 20th day of the last month of each quarter (March, June, September, December). Approved submissions made after this date will be placed into the next newsletter.

Please note that GAHE reserves the right to reject submissions that are not consistent with the goals and purposes of the organization. Articles that endorse or appear to endorse specific products, businesses, services, and are self-promotional or advertorial will not be accepted. Subjects that are appropriate deal with healthcare industry news (national and local), career management, leadership, mentoring, diversity and other professional topics. If you are not sure, please ask.

Articles submitted for the newsletter must be relevant to professional development or healthcare administration. Please format content in a Microsoft Word document, left justified, and be 1-2 pages in length. The content of the article must include: title; name of the author; the source the article was obtained from; full URL that links to the article (if applicable). Please submit photographs as email attachments in JPG file format. Please do not embed photographs in your article text. Provide name and affiliation of any person shown in photographs along with a brief caption. When using a reprint article, please provide credit to the author and/or obtain permission to use the article before submission.

GAHE reserves the right to edit, change or omit certain content (including photographs) because of length, style, relevance, or simply due to lack of space as deemed appropriate.