



An Independent Chapter of



American College of
Healthcare Executives
for leaders who care®

GAHE WEEK

VIRTUAL | MARCH 8-11

FREE WEBINARS

12:00-12:45PM ET EACH DAY

NETWORKING HAPPY HOUR MARCH 11, 5:30PM

Join Us for GAHE Week

March 8-11

Details on page 4 or visit

www.gahe.org/gaheweek

IN THIS ISSUE:

MEMBER OUTREACH NEWS

MEMBER NEWS

DIVERSITY AND INCLUSION CMTE

GAHE WEEK

GAHE STUDENT CORNER

UPCOMING EVENTS

MEMBERSHIP REPORT

SPONSORSHIP OPPORTUNITIES

ACHE NATIONAL NEWS

- CONGRESS REGISTRATION OPEN
- CAREER RESOURCE CENTER WEBINAR SERIES
- NATIONAL ACTION PLAN TO ADVANCE PATIENT SAFETY

CONNECT WITH GAHE

President's Letter:

Dear GAHE Membership,

As we all honor Black History Month, February provides us a time of reflection to remember and learn from the many amazing black leaders who have sacrificed their freedoms and liberties for equality. These sacrifices have charted the path for a brighter future for generations to come across the world, yet we still have so far to go. Martin Luther King Jr once said, "Our lives begin to end the day we become silent about things that matter." To me, these words have never been more meaningful than they are today.

I am proud to announce that the Georgia Association of Healthcare Executives (GAHE) is committed to not being silent. During our February board meeting, the GAHE Board of Directors unanimously voted to approve a formal partnership between GAHE and the Georgia Chapter of the National Association of Health Service Executives (NAHSE) to include the development of GAHE's first Diversity and Inclusion Committee. Some may say this partnership is well overdue ... and I agree with that statement. That said, this is a bold statement by GAHE and NAHSE to assure that our memberships have the appropriate representation and assure that we do our part to lead the way to a brighter future for all healthcare leaders in the state of Georgia.

I encourage you to take a moment to read the board resolution of the establishment of a GAHE Diversity and Inclusion Committee in partnership with Georgia Chapter of NAHSE, voted upon unanimously by the GAHE Board of Directors on February 5, 2021 (see page 3).

Thank you to all of our healthcare leaders in Georgia for your bold and resilient leadership.

Sincerely,

Trent Lind, FACHE

President, Georgia Association of Healthcare Executives



*Trent Lind, FACHE
GAHE President*

Member Outreach News:

GAHE Offers Ways to Get Involved Wherever You're Located in Georgia

by Carrie Bennett, FACHE, Chair, Member Outreach Subcommittee

Did you know that GAHE welcomes approximately 75 new members every quarter? Approximately 60% of these members are like me – long-term ACHE members who are transferring to the Georgia chapter.

I relocated to Savannah from Tennessee to take a new job in 2013. At the time, I was new to my job, my organization and the place I was planning to call home. While transferring to GAHE allowed me to begin building my network of peers, I faced challenges. Only 3% of GAHE's members actually live or work in Chatham county and, even before the pandemic shut down in-person events, I wasn't able to make it to lunch and learns in Atlanta based on my full-time role by day and my goal of supermom-wannabe by night.

I had seen some volunteer opportunities listed on the GAHE website when I first joined but I assumed that these roles were likely by invitation only or that only Atlanta-based members were likely involved. I was pleasantly surprised to learn that GAHE leadership actively encourages all members to lend their interests and skills to one of their standing committees regardless of location or tenure.

I chose to join the Membership Committee. The fact that I don't work or live in Atlanta isn't a deterrent. Meetings are typically held via conference call one morning a month, allowing anyone across the state to join in.

As a group, we find ways to welcome and connect the dots for new members, empower existing members to re-engage, and encourage renewals. We also actively measure member satisfaction and use feedback from new members as well as departing members to help give the board feedback about the ways we can work as a chapter to maximize member experience.

Because all of the other participants face similar scheduling challenges, everyone understands if someone has to step back due to scheduling issues or if now is not the time for you to step up and lead a project. This means, from one month to the next, I can choose how involved I want to be.

While the monthly calls are designed to gather feedback, confirm assignments and report progress on key projects, it is nice to have built-in opportunities for connecting with other healthcare leaders each month. Over time, I have made friends who always make me feel welcomed when I can make it to Atlanta or Macon. It's also nice to have a network of people I can call on the other side of the state to ask, "How are you dealing with this challenge?" or "How is this trend impacting you?"

GAHE offers its members plenty of opportunities to get as involved as you want to be. If you would benefit from being more involved, I invite you to explore and join [one of the committees](#) that shape the way GAHE communicates, educates, and reaches out to its members.



*Carrie Bennett, FACHE,
Chair, Member Outreach
Subcommittee*

GAHE Establishes New Diversity and Inclusion Committee

GAHE is pleased to announce the formation of our first Diversity and Inclusion Committee. The committee was approved at GAHE's February 5 Board meeting (see board resolution below) and forms a partnership between GAHE and the National Association of Health Service Executives (NAHSE). Jarvis Gray, FACHE, will chair the committee.

The Diversity and Inclusion Committee is still in its formative stages or more information will be announced soon. The committee will be featured during [GAHE Week](#) on Thursday, March 11 at noon. Jarvis Gray will be leading that discussion and will have more information on the committee's plans and how to get involved.

If you'd like to submit an application to join the committee, or any other GAHE committee, [click here](#).

GAHE Board Resolution for Establishment of the Diversity and Inclusion Committee

Whereas the American College of Healthcare Executives (ACHE) has established its Values of Integrity, Life-long Learning, Leadership, and Diversity and Inclusion, and

Whereas the Georgia Association of Healthcare Executives embraces the Values of the American College of Healthcare Executives, and

Whereas the Georgia Association of Healthcare Executives wishes to affirm its commitment to diversity and inclusion, and

Whereas the Georgia Chapter of the National Association of Health Service Executives (NAHSE) is also dedicated to the value of diversity and inclusion,

Whereas the Board of the Georgia Association of Healthcare Executives has deemed it appropriate and necessary to establish a Diversity and Inclusion Committee to carry out this vision,

Therefore, be it resolved that the Georgia Association of Healthcare Executives hereby establishes the Diversity and Inclusion Committee, and

Be it further resolved, the Board of the Georgia Association of Healthcare Executives recommends that the President or President-Elect of the Georgia Chapter of the National Association of Health Service Executives be named the Chairman of that committee, subject to the following criteria:

1. The Chairman of the Committee must be a member of ACHE and, preferably, a Fellow of the American College of Healthcare Executives.
2. The Chairmanship of the Diversity and Inclusion Committee is subject to the approval of the Board of Georgia Association of Healthcare Executives.
3. Committee members will be selected by the Chairman of the committee with the input and approval of the President of GAHE
4. The Chairman will, upon being approved, will immediately proceed to develop a committee charter and activity description for approval by the GAHE Board.

Duly approved by the GAHE Board,

Jon-Paul Croom, Secretary

February 5, 2021

GAHE WEEK

VIRTUAL | MARCH 8-11

FREE WEBINARS

12:00-12:45PM ET EACH DAY

NETWORKING HAPPY HOUR MARCH 11, 5:30PM

LEARN ALL ABOUT GAHE AND HOW TO GET MORE INVOLVED!

Welcome to GAHE Week! Each day at noon, March 8-11, GAHE's Committee Chairs and board members will host interactive sessions to fill you in on their activities, answer your questions, and show you how to get involved. Each session is free and will last from 30-45 minutes.

On Thursday at 5:30, there will be a speed networking session to discuss topics of your choice with your GAHE colleagues. The registration fee for this session is \$5 for members and students and \$10 for non-members.

Here's the full schedule of events:

GAHE WEEK DAILY SCHEDULE – MARCH 8-11

Date/Time	Topic	Speakers
Monday, March 8, Noon – 12:45 pm Free Registration	Introductions Membership Committee Webinar Subcommittee and Leadership Series	GAHE President Trent Lind, FACHE Doug Gregory, FACHE Carrie Bennett, FACHE Larry Tyler, FACHE
Tuesday, March 9, Noon – 12:45 pm Free Registration	Programs Committee Communications Committee	Angela Henry, FACHE Sepi Browning, FACHE
Wednesday, March 10, Noon – 12:45 pm Free Registration	Fellow Advancement Committee Career Development Committee	Rahul Ghotge, MD, MS, MBA, FACHE Sonja McClendon, FACHE
Thursday, March 11, Noon – 12:45 pm Free Registration	Sponsorship Committee Diversity and Inclusion Committee	Bobby Ryan, FACHE Jarvis Gray, FACHE
Thursday, March 11, 5:30-6:30 pm Register	Speed Networking Session	Moderators: Sepi Browning, FACHE, and other GAHE Board members

\$5 for Members and Students
\$10 for Non-members

More Information and Updates at GAHE.ORG/GAHEWEEK

GAHE Student Corner

A section tailored for GAHE student associates, written by students.

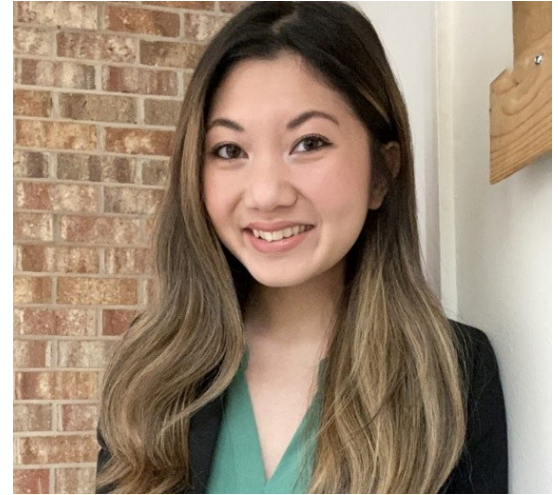
Student on the Move Profile

Diana Nguyen: From Masters Candidate to Administrative Fellow

by Keshni Kokilakumar, MPH/MHA Candidate at The University of Georgia

Diana Nguyen is a second-year Masters in Health Administration student at the University of Georgia (UGA), who recently accepted an administrative fellowship position at CommonSpirit Health in Tacoma, WA. CommonSpirit Health is the second-largest non-profit system in the country and provides their administrative fellows with the opportunity to make an impact on the community through a combination of project-based and rotational-based experiences. Diana will be starting her fellowship with CommonSpirit Health this summer.

Diana's journey began during her undergraduate career at UGA, conducting research under Dr. Ming Zhang, a faculty member of the Epidemiology department in the College of Public Health. Their research revolved around analyzing the possible correlators of sepsis rates in Georgia hospitals. Originally hypothesizing that hospitals in low-income counties were more likely to have higher rates of sepsis, Diana was surprised to find that low scores in certain categories, such as "handwashing" and "enough qualified nurses" were significantly correlated with higher sepsis rates. This phenomenon, paired with her newfound understanding that strong, effective leadership was necessary in hospitals to reduce sepsis rates and deliver high-quality care were the foundational steppingstones that drove Diana to pursue a Masters in Health Administration.



Diana Nguyen is a second-year Masters in Health Administration student at the University of Georgia.

Despite the new onset of the COVID-19 pandemic, Diana placed her faith in her passion for improving health outcomes and poured her time and efforts into the rigorous application process. "Despite feeling [anxious], my friends, family, classmates, and professors were extremely supportive of me throughout the application process and helped to instill a lot of confidence in addition to helping me prepare," she says, when asked about how she overcame any fears during the application process. Eventually, she would receive an offer from CommonSpirit Health, bringing Diana one step closer to her dream.

Diana was initially drawn to CommonSpirit Health's mission, which places protecting the vulnerable and advancing social justice at the forefront of the health system, a concept that strongly resonated with her experiences as a second-generation immigrant. Additionally, she is eager to learn as much as she can about operations on a local and system-wide level and feels that CommonSpirit Health can provide her with the resources to sharpen her skills and knowledge base in strategic planning, process and quality improvement, and finance. Diana is especially keen on learning more about the utilization of data analytics to improve patient care in collaboration with CommonSpirit's Mission Control Center and working alongside healthcare executives and other CommonSpirit Health administrative fellows across the country. Diana hopes to one day use her skills and experiences acquired from CommonSpirit to advance up the health administration ladder and eventually hold an executive position in either strategy or operations.

About Our New Student Member News Section

GAHE's Communication Committee has welcomed several new student members who have volunteered to coordinate a student section in the newsletter. This section will feature activities at our Higher Education Network (HEN) schools as well as a "Students on the Move" article, which will highlight student member's academic achievements, job/internship acceptance, etc. For more information, contact Bruce Lloyd at gahe.org@gmail.com.

Recent Virtual Events Recap



Panelists at our February 18 virtual lunch and learn focused on "Equity of Care."

GAHE has already had several virtual programs this year. We kicked off the new year with a Leadership Series webinar featuring Chuck Stokes, FACHE, Founding Partner at Relia Healthcare Advisors and Former President and CEO of Memorial Hermann Health System in Houston, who looked at workforce issues leaders should be anticipating in a post-COVID environment. Our January 21 virtual face-to-face program covered "Disruptive Innovation in Healthcare Delivery."

Our February 18 virtual lunch and learn featured a lively discussion on "Equity of Care." And on February 24, we had a webinar on "Documentation and Communication: Best Practices." These programs provided GAHE members with 3 hours of face-to-face credit and 2 hours of qualified credit.

Upcoming Events

[March 3 Webinar](#)

"Evolving Technologies Impact to Programming,"

12:00-1:00 PM Eastern Time

1 hour of qualified credit.

[March 8-11 – "GAHE Week"](#)

12:00-12:45 PM Monday-Thursday

Free virtual sessions each day

[March 11 — GAHE Week Speed Networking Session](#)

Happy Hour networking event on March 11 at 5:30 pm.

[March 22-25—ACHE Congress on Healthcare Leadership](#)

Virtual Earn up to 12 hours of ACHE face-to-face credit. Learn more and register at www.ache.org.

March 31 Leadership Series Webinar

Featuring John Couris, President & CEO of Tampa General Hospital

1 hour of qualified credit

Mark your calendar. Details and registration to be announced soon.



Register for All GAHE Events at:

<https://gahe.org/events>

Membership Report *(January 1-February 25, 2021)*

Congratulations to these GAHE members who achieved their **Fellow of ACHE (FACHE)** credential. Please take a moment to congratulate your colleagues for their commitment to advancing their healthcare careers:

- **Kevin M. Bush, Jr., EdD, FACHE**

We recognize the following **members who recently recertified their Fellow status:**

Amy L. Browning, FACHE	Janet W. Parham, FACHE	LTC Jeffery K. Blackwell, FACHE
Beth Ryther, FACHE	Janine Sarti, JD, FACHE	Lynnette Ball, RN, FACHE
Bobby Ryan, FACHE	Jason D. Lilly, FACHE	Mary A. Germann, RN, FACHE
Brian R. Thompson, MBA, FACHE	Jean C. O'Connor, JD, PhD, FACHE	Melinda Wagner, RN, FACHE
Daniel P. Fisher, FACHE	Joyce T. Siegele, FACHE	Robert D. Johnston, MBA, CMPE, FACHE
Divya B. Matai, FACHE	Karen J. Kasowski, FACHE	
James S. Zacharias, MBA, CMPE, FACHE	Laura J. Caramanica, PhD, FACHE	

We welcome the following **new members of ACHE** in the Georgia chapter and hope to meet you soon:

Abubakr Chaudhry, MD	MAJ Regina G. Williams
Alexis Doss	Marilyn Ponder, DBA
Anna Raspino	Marzena Buzanowska, MD
Aubrey Smith, Jr.	Michelle Tillis, RN, BSN, MBA
Billy J. Latham, Jr., MBA	Mohamed Ragab, DDS
Carol Fleming	Ramona Sabau
Colby Herrin	Rebecca Downey, MD
Connie E. Hampton, DNP, RN	Rebecca M. Blake
Corey M. Poindexter, Jr.	Richard Collins
Elvis Amankwah	Samantha Banks, RN
Eric Dalton	Sanford Duke, MD
Heather Avery	Sara Gisler
Jared S. Roe	Saravanan Kuppuswamy
Jason B. Ellis	STANFORD STRONG, MHA
Jerry Shadbolt	Stephanie D. Atkinson
Judy Fitzgerald	Stephanie Vicent
Kay W. Hancock	Sue Lane Hughes
Kendall B. Stoyale, MBA, BA	Thomas J. Willard, Jr.
Kristen Fano-Schultze, PharmD	Valerie Bender
Kurt Kless	Veronica A. Murphy
Linwood G. Burns, MHA	
Lisa P. Smith	



Call for Webinar Proposals

Do you have an idea for a webinar that would be appropriate for educating GAHE's membership? If so, GAHE's Webinar Subcommittee invites you to contribute to our [Call for Webinar Proposals](#).

2021 GAHE SPONSORSHIP OPPORTUNITIES

The American College of Healthcare Executives (ACHE) is an international professional society of more than 48,000 healthcare executives who lead hospitals, healthcare systems, and other healthcare organizations. ACHE's established network of 77 chapters provides access to networking, education, and career development at the local level.

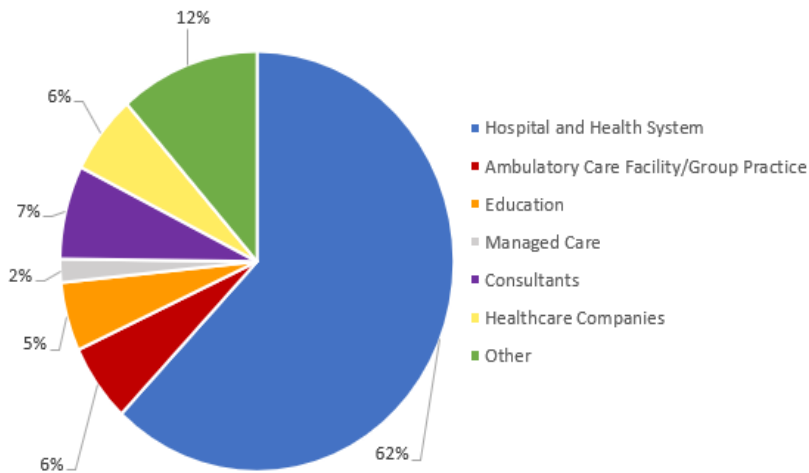
The Georgia chapter of ACHE (GAHE) serves the professional development needs of the state of Georgia. We offer our 1600+ members the opportunity to be leaders committed to excellence in healthcare management, and to grow professionally.

	PLATINUM \$5,000	GOLD \$2,500	SILVER \$1,000*	SR EXEC EVT \$5,000
Sponsor logo on Chapter website with link to sponsor website	●	●	●	
Sponsor name and logo on display at chapter virtual events (12+ per year)	●	●	●	
Sponsor name on monthly email communications to chapter distribution list (2500+)	●	●	●	
Verbal acknowledgments at GAHE events	●	●		●
Sponsor advertisement in quarterly chapter newsletter	●	●		
Sponsor logo on event fliers and registration pages	●	●	●	●
Sponsor spotlight on GAHE social media platform	●	●	●	
Submission of a thought leadership piece to the chapter newsletter	●			
Introduction of speaker for Senior Executive event or ACHE chairman Event				●
Complimentary luncheon registrations	20	10	10	5
Seat at reserved/VIP table	●			●
Sponsor ribbon recognition on name tag	●	●	●	●
Co-chair for planning a meeting	●	●		
Moderator for panel	●			

*Silver sponsorship available to Organizations with 25 or fewer employees

OUR MEMBERS

2020 National Members and Fellows Profile



BY EDUCATION

61.1% AT LEAST 1 MASTERS DEGREE

25.9% DOCTORATE OR 2 MASTERS DEGREES

TOP 4 POSITIONS

CEO
VP
MANAGER
DEPARTMENT HEAD

CHAPTER EVENTS

25+ events planned for 2021

SAMPLE PROGRAMS INCLUDE

SENIOR EXECUTIVE EVENTS

PAST SPEAKERS:

Jonathan S. Lewin, MD | FACR

PRESIDENT, CEO & CHAIRMAN OF THE BOARD | EMORY HEALTHCARE

Carl S. Armato, MD | FACHE

PRESIDENT & CEO | NOVANT HEALTH

LEADERSHIP SERIES WEBINARS

PAST SPEAKERS:

Chuck Stokes, FACHE

FOUNDING PARTNER | RELIA HEALTHCARE ADVISORS AND FORMER PRESIDENT AND CEO | MEMORIAL HERMANN HEALTH SYSTEM

John Goodnow, FACHE

CEO | BENEFIS HEALTH SYSTEM

Steve Purves, FACHE

PRESIDENT & CEO | VALLEYWISE HEALTH

MONTHLY VIRTUAL LUNCH AND LEARNS AND WEBINARS

Focusing on Topics Such As:

- Patient Experience
- COVID-19 Lessons Learned
- Telemedicine
- Joint Ventures
- Diversity and Inclusion

**For more sponsorship information,
please contact:**



sponsorship@gahe.org



404.444.8136

ACHE Congress Registration Is Now Open

Registration for the virtual 2021 ACHE Congress, March 22–25, is open! Don't miss your chance to hear from an amazing lineup of leaders including Anthony S. Fauci, MD, director, National Institute of Allergy and Infectious Diseases; Atul Gawande, MD, surgeon, Brigham and Women's Hospital/writer, *The New Yorker*; Keller Rinaudo, co-founder/CEO, Zipline; Amy Walter, national editor, Cook Political Report/host, "The Takeaway;" Wes Moore, CEO, Robin Hood; Indu Subaiya, MD, co-founder/president, Catalyst @ Health 2.0; and so many more! Register today at ache.org/Congress.



Complimentary Career Resource Center Webinar Series

The career landscape continues to evolve, creating new expectations and requiring enhanced expertise while navigating the potential opportunities ahead. ACHE's Career Resource Center hosted a webinar series designed to support members covering such topics as "The NEW Networking Model", "Building Confidence and Defining Your Executive Presence", and exploring "The Role of an Executive Coach" in your ongoing career and leadership development pursuits. To view these webinars, please visit <https://www.ache.org/career-resource-center/career-resource-webinars>

Safer Together: A National Action Plan to Advance Patient Safety

ACHE joined members of the National Steering Committee for Patient Safety to author *Safer Together: A National Action Plan to Advance Patient Safety* to provide health systems with renewed momentum and clearer direction for eliminating preventable medical harm.

[*Safer Together: A National Action Plan to Advance Patient Safety*](#) draws from evidence-based practices, widely known and effective interventions, exemplar case studies and newer innovations. The plan is the work of 27 influential federal agencies, safety organizations and experts, and patient and family advocates, first brought together in 2018 by the [Institute for Healthcare Improvement](#).

The knowledge and recommendations in the National Action Plan center on four foundational areas deliberately chosen because of their widespread impact on safety across the continuum of care:

1. *Culture, Leadership, and Governance*: The imperative for leaders, governance bodies and policymakers to demonstrate and foster deeply held professional commitments to safety as a core value and promote the development of cultures of safety.
2. *Patient and Family Engagement*: The spread of authentic patient and family engagement; the practice of co-designing and co-producing care with patients, families and care partners to ensure their meaningful partnership in all aspects of care design, delivery and operations.
3. *Workforce Safety*: The commitment to the safety and fortification of the healthcare workforce as a necessary precondition to advancing patient safety; the need to work toward a unified, total system perspective and approach to eliminate harm to both patients and the workforce.
4. *Learning System*: The establishment of networked and continuous learning; forging learning systems within and across healthcare organizations at the local, regional and national levels to encourage widespread sharing, learning and improvement.

For ACHE resources on advancing patient safety, visit ache.org/Safety. There you will find [*Leading a Culture of Safety: A Blueprint for Success*](#), which gives CEOs and senior leaders a tool to both assess and advance their organization's culture of safety.

Thank You to GAHE's 2021 Sponsors

Platinum Sponsor



Gold Sponsor



Silver Sponsor



Find Out More About GAHE Sponsorship

If your organization is interested in becoming a GAHE sponsor, visit our sponsorship page at <https://gahe.org/sponsors/> and learn more about sponsorship levels, benefits, and pricing.

CONNECT WITH GAHE

GAHE is on social media – so remember to connect with us for the most up to date news and photos...

- Linked In: www.linkedin.com/groups/1121747
- Twitter: @GAHEConnect -- twitter.com/GAHEConnect
- Facebook: www.facebook.com/GAHEConnect



CALL FOR CONTENT

Content submissions to the GAHE newsletter are for reviewed for appropriateness by the Communications Committee. Please send your contributions, including articles, news, member accomplishments and photos to bruce.lloyd@gahe.org, no later than close of business by the 20th day of the last month of each quarter (March, June, September, December). Approved submissions made after this date will be placed into the next newsletter.

Please note that GAHE reserves the right to reject submissions that are not consistent with the goals and purposes of the organization. Articles that endorse or appear to endorse specific products, businesses, services, and are self-promotional or advertorial will not be accepted. Subjects that are appropriate deal with healthcare industry news (national and local), career management, leadership, mentoring, diversity and other professional topics. If you are not sure, please ask.

Articles submitted for the newsletter must be relevant to professional development or healthcare administration. Please format content in a Microsoft Word document, left justified, and be 1-2 pages in length. The content of the article must include: title; name of the author; the source the article was obtained from; full URL that links to the article (if applicable). Please submit photographs as email attachments in JPG file format. Please do not embed photographs in your article text. Provide name and affiliation of any person shown in photographs along with a brief caption. When using a reprint article, please provide credit to the author and/or obtain permission to use the article before submission.

GAHE reserves the right to edit, change or omit certain content (including photographs) because of length, style, relevance, or simply due to lack of space as deemed appropriate.