

An Independent Chapter of



American College of
Healthcare Executives
for leaders who care®

IN THIS ISSUE:

- 2026 BOARD SLATE ANNOUNCED
- UPCOMING EVENTS
- REGENTS MESSAGE
- ACHE OF GEORGIA NEWS
- EVENT HIGHLIGHTS
- STUDENT CORNER
- 2025 FELLOWS
- JOINT HOLIDAY EVENT
- FELLOWS RECOGNITION
- NEW MEMBERS
- TOASTMASTERS SPOTLIGHT
- THANK YOU TO OUR SPONSORS
- CONNECT WITH ACHE OF GEORGIA

President's Letter:

Dear Georgia ACHE Chapter Members,

As we enter the fourth quarter, I reflect on what has been a remarkable year for our chapter. I am delighted to announce that our membership has surpassed 1,700 members—a testament to your ongoing commitment to leadership, professional development, and healthcare advancement in Georgia.

Congratulations to the 26 members who earned their Fellow of the American College of Healthcare Executives (FACHE) designation this year. This achievement reflects your dedication to excellence. To those preparing for the FACHE exam, I encourage you to take this important step before year's end. Your commitment strengthens our community and sets a powerful example.

I am pleased to announce that several members will be formally recognized in December for their exceptional contributions: Tamara Bourda, Charisse Braxton, Nicole Denham, Sandy Duke, Graham Fox, Angela Giger-Henry, and Lorraine Duke. Please join me in congratulating these individuals for their dedication to our chapter and the healthcare profession.

Thank you to everyone who participated in our annual member survey. Your feedback guides our programming and led to our chapter receiving an award for outstanding member satisfaction.

This fall, our chapter hosted several successful events including Senior Execs on Deck, generously sponsored by Brasfield & Gorrie, and Health Connect South. These gatherings offered valuable opportunities for networking, learning and collaboration. We also had over 140 attendees at our last luncheon, partnering with the Association for Medical Facility Professionals (AMFP), to discuss healthcare construction.

We are grateful to Kaiser Permanente for joining us as a Platinum Sponsor this year. Their support, along with all our sponsors, enables us to expand our offerings and deliver high-quality programs for our members.

Thank you for your dedication, engagement, and passion for healthcare leadership. I look forward to seeing you at upcoming events and celebrating our progress.

With sincere appreciation,

Lindsey H. Petrini, MBA, FACHE
President, ACHE of Georgia



Lindsey H. Petrini, FACHE

Register Now!

**December 4 Joint Holiday
Event with Georgia HIMSS**



ACHE of Georgia 2026 Board of Directors Slate

Election to Be Held at November 13 Business Meeting

ACHE of Georgia’s Nominating Committee has met and offers the following slate of Officers and Directors for your consideration for the 2026 chapter year. Voting will take place at the ACHE of Georgia Annual Meeting to be held as part of our [Mini Summit at Woven Health Collective](#) in Midtown Atlanta on November 13 from 11:30 AM to 3:45 PM. Click the names of candidates listed below to view their LinkedIn profiles.

President – [Sanford G. Duke, MD, MBA, FACHE](#) (automatic succession)

Vice President – [Nicole Denham, FACHE, MHA, RN](#)

Secretary – [Jon-Michael Williams, FACHE](#)

Treasurer – [Felix Soto Izaguirre, MBA, FACHE](#)

Immediate Past President – [Lindsey H Petrini, FACHE](#) (automatic succession)

At-large Member – [Philip Atoyebi, MD, MBA, MPH, FACHE](#)

At-large Member – [Sepi Browning FHIMSS, FACHE, CHCIO, eFACHDM, MHA/MPH, PMP, CHISL](#)

At-large Member – [Lorraine C. Duke, MBA, FACHE](#)

At-large Member – [Jennifer J. Giusti, MPA, BSN, RN, FACHE](#)

At-large Member – [Lily J. Henson, MD, MMM, FAAN, FACHE](#)

At-large Member – [Anthony J. Saul, FACHE](#)

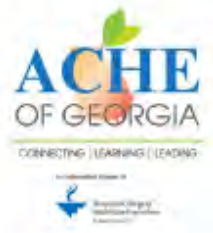
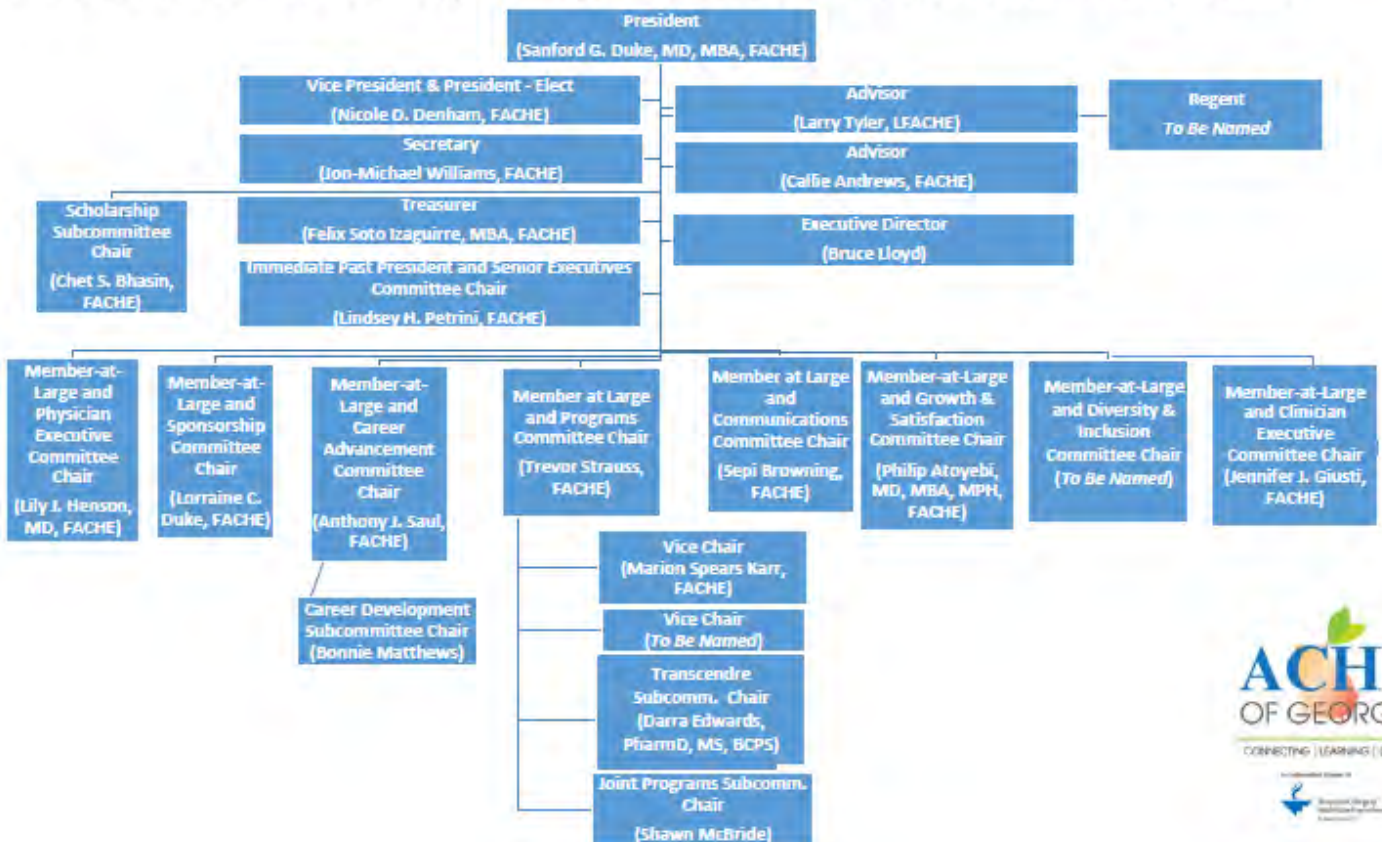
At-large Member – [Trevor Strauss, FACHE](#)

At-large Member – NAHSE/NAHLE Representative to Be Named/Chair of D&I Committee

ACHE Regent Director – To be named

The proposed 2026 ACHE of Georgia organizational structure, including the candidates above and committee and sub-committee chairs, is shown below. With the exception of the Regent Director, President, and Immediate Past President, officers shall be elected by a majority of the voting membership present at the annual meeting of the membership. The Vice President automatically succeeds to the office of President and the President automatically succeeds to the office of Immediate Past President.

2026 ACHE of Georgia Organizational Structure - Proposed



Upcoming Events

Upcoming Events:

- October 16, 11:30 AM to 2:00 PM** — “Fostering Inclusion of Patients and Employees with Disabilities,” Lunch and Learn at Maggiano’s Buckhead. 1.5 hours of ACHE In-Person Education Credit. [Learn More](#) or [Register Now](#)
- November 8, 10:00 AM to 6:00 PM** — Georgia Healthcare Field Day 2025 is a first-of-its-kind collaboration uniting the GA Chapters of HIMSS, ACHE, NALHE, NAHSE, and HFMA for a dynamic day of movement, mission, and meaningful connection. [Sponsorship](#) opportunities available — [Learn More and Register](#)
- November 13, 11:30 AM to 5:15 PM** — “Employee Engagement Bootcamp” and networking at Woven Health Collective in West Midtown. Mini Summit with 3 hours of ACHE In-Person Education credit. Includes lunch, education program, and rooftop networking with drinks and light hors d’oeuvres. Our 2026 Board election will also be held at this meeting. [Learn More](#) or [Register Now](#)
- November 19, 6:00 PM to 8:30 PM** — “The Executive Edge: Networking, Presence, and Servant Leadership for Healthcare Leaders,” in-person Clinician Executives event. Mark your calendar.
- December 4, 4:00 PM to 6:30 PM** — Senior Executives Fireside Chat at Lake Lanier Islands, by invitation only. Details to be announced soon.
- December 4, 6:30 PM to 8:30 PM** — Joint Holiday Networking Event and Awards Night with Georgia HIMSS, Lake Lanier Islands. [Learn More](#) or [Register Now](#) — [Sponsorship Opportunities](#)
- March 2-4, 2026** — ACHE Congress on Healthcare Leadership, Houston, TX, “Purpose in Motion.” Registration is now open. [Learn More and Register](#).

Register for Events at

www.acheofgeorgia.org/events

Registration Now Open
1.5 Hours of ACHE In-Person
Education Credit

ACHE of Georgia In-Person Lunch and Learn
October 16, 11:30 AM - 2:00 PM ET
Maggiano's Buckhead
1.5 Hours of ACHE In-Person Education Credit

Join us on October 16 at Maggiano’s in Buckhead as our panel of experts discusses “Fostering Inclusion of Patients and Employees with Disabilities.”

And earn 1.5 hours of ACHE In-Person Education credit!

ACHE OF GEORGIA

Fostering Inclusion of Patients and Employees with Disabilities

Moderator
Angela Henry, FACHE,
Senior Client Partner,
Korn Ferry

Panelist
Marion Spears Karr, FACHE,
Managing Partner &
Founder, In-Flow Executives

Panelist
Benita K. Miller, FACHE, LISW-CP, VHA-CM, Deputy Network Director, VA Southeast Network (VSN 7), U.S. Department of Veterans Affairs

Panelist
Gina Tipton, RN, MBA, FACHE, Chief Executive Officer, Encompass Health Rehabilitation Hospital of Atlanta

Register Now at www.acheofgeorgia.org or Scan QR Code

Social Media



An Independent Chapter of
American College of
Healthcare Executives
for better healthcare.

More Info



Repost and + Follow

Mini Summit Alert!

November 13, 11:30 AM to 3:30 PM

Rooftop Networking from 3:45 PM to 5:15 PM

3 Hours of ACHE In-Person Education Credit!

“Employee Engagement Bootcamp”

Featuring ACHE Choice Speaker Dawn Z. Wright, JD, FACHE

Ready to transform the way you engage your team? Join us for an Employee Engagement Bootcamp — a powerful 3-hour, in-person summit designed to inspire action and deliver results.

Seats are limited—don’t miss your chance to sharpen your leadership edge and build connections that last!

Location: Woven Health Collective, 889 Howell Mill Road, Ste. 4500, Atlanta

What’s Included:

- ✓ Dynamic ACHE choice speaker (ACHE In Person Credit 3.0 hours)
- ✓ Delicious lunch served during the session
- ✓ Action-packed strategies to boost engagement & retention
- ✓ Rooftop networking to connect with peers

Register now to save your spot!

Social Media



An Independent Chapter of
American College of
Healthcare Executives
for better healthcare.

More Info



Repost and + Follow

Getting Out of Your Comfort Zone

Have you ever been persuaded to do something outside your comfort zone? Last year, my brother-in-law convinced me to hike to the summit of the Grand Teton in Wyoming for his 40th birthday. Close to a year after saying yes, I'm facing the reality of my commitment.

I'm both nervous and excited about this adventure. It has taken a lot of preparation, which you can see in the photos I've shared below. But I know it is something I will see as an accomplishment for the rest of my life.

Just days away from this adventure, it dawned on me, as I was reflecting on my Regent message, that to continue to develop as leaders, we must often take on similar challenges. "Go as far as you can see; when you get there, you'll be able to see farther," is a quote often attributed to John Rockefeller, Sr., father of the philanthropist who was instrumental in creating Grand Teton National Park.

While you don't have to hike a literal mountain, I encourage you to commit to climbing "leadership mountains" on

a regular basis. When you challenge yourself to get out of your comfort zone, you'll probably be uncomfortable—both nervous and excited. I can promise that you'll also be amazed at what you learn along the way, and you'll gain a new perspective at the summit. Just as Rockefeller remarked, you'll be able to see farther.



John Kueven, FACHE

Committing to your leadership journey takes passion, persistence and a plan. ACHE and ACHE of Georgia are committed to helping you climb your leadership mountains. There are many exciting opportunities that will help you learn and become the best leader you can be, from virtual webinars to In-Person opportunities, as well as a partnership with programs from Health Connect South. A comprehensive list of upcoming events can be found at [ACHEofGeorgia.org](https://www.acheofgeorgia.org).

Warmest Regards,

John Kueven, FACHE
Regent for Georgia

Here are some of my favorite pictures from my preparation for my hike, both right here in Georgia!



Blood Mountain



Yonah Mountain

Call for Nominations for ACHE Regents Awards

Nominations are now being accepted for our 2025 ACHE Regents Awards. The awards will recognize outstanding Early Careerist and Senior Executive ACHE members in Georgia. Recipients will be recognized on December 4 at the ACHE of Georgia and Georgia HIMSS joint awards and holiday event at Lake Lanier Islands.

If you know of someone who would be a great fit, please send an email to john.kueven@nghs.com by **November 19** with a brief paragraph describing why your nominee should be selected for the awards based on the [awards criteria](#).

Record Participation in the 2025-26 Mentorship Program

Congratulations to our Career Development Subcommittee -- led by Bonnie Matthews, MSN, RN, and Kevin Matson, FACHE -- on organizing another outstanding Mentorship Program for 2025-26. This year we have 116 members participating in the program – a new record – including 42 Fellows, 30 students, and 13 new members. There will be a program launch event for participants (by invitation only) on October 23.

ACHE of Georgia Co-Sponsors Georgia Healthcare Field Day 2025 on November 8

Get ready to be part of something Georgia’s healthcare community has never seen before. [Georgia Healthcare Field Day 2025](#) is a first-of-its-kind collaboration uniting the GA Chapters of HIMSS, ACHE, NALHE, NAHSE, and HFMA for a dynamic day of movement, mission, and meaningful connection.

This isn’t just a field day—it’s a platform for cross-industry collaboration, personal wellness, and professional growth. Through fun, team-based games and strategic networking, we’ll bring healthcare professionals and business partners together to compete, connect, and grow—inclusively.

This event is for everyone. Whether you’re ultra-competitive or just here for the camaraderie, we’ll have games and activities for every skill level, including options designed with accessibility in mind. Every individual is invited to join a team or attend in support—because community thrives when everyone can participate.

Sponsorship Opportunities Available

Georgia Healthcare Filed Day has several sponsorship opportunities available. [Click here](#) to learn more about remaining sponsorship opportunities for this event.



Mentorship Program

- 116 members participating
- 42 Fellows
- 30 students
- 13 new members



Connecting | Learning | Leading



ACHE of Georgia President Lindsey H. Petrini, MBA, FACHE , and Chapter Vice President Sanford Duke, MD, MBA, FACHE, presented a session on “Expanding Your Statewide Presence” at ACHE’s Chapter Leadership Conference in September.

ACHE of Georgia Event Highlights — August 7 Networking Night Across Georgia

On August 7, ACHE of Georgia hosted networking events in Atlanta, Augusta, and Athens. Pictured at right is the Atlanta group at New Realm Brewing on the Beltline.



Pictured at right is our Augusta group at Cavalier's Coffee in North Augusta.



Our Athens group met at Creature Comforts in downtown Athens.



ACHE of Georgia Event Highlights



We had a fantastic time at ACHE of Georgia's Senior Execs on Deck at Truist Park on September 10. Special thanks to Brasfield & Gorrie for hosting the event. At left is a group photo taken at our pregame party at Brasfield & Gorrie's office. Below is a picture of our group at the game.



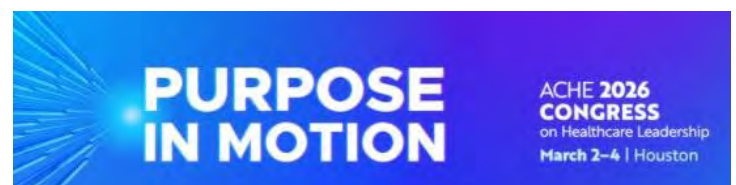
Our September 25 lunch and learn focused on building a more efficient, higher-quality, and truly patient-centered healthcare delivery system.



We had a great turnout for our September 25 luncheon, which was a joint event with the Association of Medical Facility Professionals – Atlanta



On September 17 at Health Connect South, ACHE of Georgia organized an amazing panel of experts whose perspectives truly elevated the conversation. Their topic was "Innovation and the Changing Face of Healthcare."



ACHE of Georgia Student Corner

A section tailored for ACHE of Georgia student associates, written by students.

First-Year University of Georgia MHA Students Learn Leadership Skills from Nicole Denham, FACHE, MHA, RN

UGA's MHA program had another great guest speaker in September in our Leadership & Management course!

Our first-year MHA students had the opportunity to learn from Nicole Denham, FACHE, MHA, RN, Chief Clinical Innovation Officer at DEPTH Health. Nicole shared her career journey from critical care nursing to executive leadership and emphasized how strong leadership blends both the clinical and administrative lenses to achieve lasting impact in healthcare.



First-year UGA MHA students posed for a group picture with Nicole Denham, FACHE, MHA, RN (fifth from left), following her presentation to the group.

Some key takeaways from her session:

- Leadership is influence, not title – every role and level has the ability to lead.
- Multidisciplinary coalitions and diverse voices are essential for durable change.
- Be bold, mission-driven, and resilient – setbacks will

happen, but purpose keeps leaders moving forward.

- True leadership requires showing value, not just vision.

Nicole left our students with a powerful call to action: leadership should be memorable, collaborative, and inspiring.

Thank you, Nicole, for inspiring the next generation of healthcare leaders!

Georgia State MHA Students Engage with Healthcare Leaders at Health Connect South

Georgia State University students and faculty had a great time at Health Connect South on September 17. They had the opportunity to hear from inspiring leaders across the healthcare ecosystem, network with professionals from across the region, and engage in meaningful conversations about the future of healthcare innovation, equity, and leadership.

Big thanks to the organizers of Health Connect South for putting together such a dynamic event — and to all the speakers and panelists who shared their insights and expertise. We're proud to have our Georgia State University Robinson College of Business Institute of Health Administration students representing the next generation of healthcare leaders!



GSU students and faculty gather for a picture at Health Connect South on September 17.

Join Us for Our Annual Joint Holiday Event!

December 4, 6:30 PM to 8:30 PM
Lake Lanier Islands, Buford

About the Event:

Join us for a festive evening of networking and holiday cheer, where you can connect with professionals from all over Georgia. Feel free to invite a colleague to share in the celebration and don't forget to bring your business cards. It's also the perfect opportunity to show off your favorite holiday attire!

Location:

Lake Lanier Islands Peachtree Point Pavilion, Buford, GA



Sponsorships Available!

More Information



Scan QR Code to Register



Registration Open Now at www.acheofgeorgia.org

ACHE of Georgia/Georgia HIMSS December 4 Joint Holiday Event Sponsorship Opportunities

ACHE of Georgia and Georgia HIMSS are hosting a [joint holiday event](#) and awards program at Lake Lanier Islands Peachtree Point on December 4. This is a great opportunity to show your support for both organizations as we celebrate the holidays together and recognize our achievements.

Our sponsorship tiers are:

- Senior Executive Fireside Chat: \$3,000, one available (pre-event by invitation only)
- Joint Holiday Event General Sponsorship: \$1,500

[Click here](#) for sponsorship details.

Congratulations to ACHE of Georgia's 2025 Fellows

- | | |
|---------------------------------------|--|
| ➤ Daniel A. Abad, MBA, FACHE | MBA, FACHE |
| ➤ Philicia Andrews, MD, MBA, FACHE | ➤ Hyeseung Kang, PharmD, FACHE |
| ➤ William T. Blackburn, MBA, FACHE | ➤ Ijeoma Kene-Ewulu, MD, FACHE |
| ➤ Robert J. Brown, FACHE | ➤ Nakia S. Mattis, DHA, MBA, MPH, PMP, FACHE |
| ➤ Marzena Buzanowska, MD, FACHE | ➤ Robert M. Maxwell, FACHE |
| ➤ Ainsley Coley, RN, MSN, FACHE | ➤ Hiroko Miles, FACHE |
| ➤ Aiyana N. Cottman, FACHE | ➤ Robert Norris, FACHE |
| ➤ Brian Evans, FACHE | ➤ Nichole Rydahl, FACHE |
| ➤ Murry Ford, FACHE | ➤ Elysha S. Roberts, PharmD, FACHE |
| ➤ Rebeccah George, FACHE | ➤ Mark G. Stevens, MBA, PT, BS, FACHE |
| ➤ Diana R. Gillogly, FACHE | ➤ LeShea Turner, FACHE |
| ➤ Trent Goode, II, FACHE | ➤ MAJ Matthew Woods, FACHE |
| ➤ Rev. Christopher S. Jennings, FACHE | ➤ Kathryn Wolfe, FACHE |
| ➤ COL John A. Johnson, MD, | |

If you are interested in learning how to become an ACHE Fellow, [click here](#) to view information on ACHE's website.

Membership Report *(Since August 2025)*

Fellows Recognition

New ACHE Fellows:

Congratulations to these ACHE of Georgia members who achieved their [Fellow of ACHE \(FACHE\)](#) credential since our last newsletter. Please take a moment to congratulate your colleagues for their commitment to advancing their healthcare careers:

- Marzena Buzanowska, MD, FACHE
- Ainsley Coley, RN, MSN, FACHE
- Aiyana N. Cottman, FACHE
- Rebeccah George, FACHE
- Hiroko Miles, FACHE
- Elysha S. Roberts, PharmD, FACHE
- Nichole Rydahl, FACHE
- LeShea Turner, FACHE
- Kathryn Wolfe, FACHE

We recognize the following members who recently recertified their Fellow status:

- Timothy Bergeron, FACHE
- Stuart D. Downs, DNP, RN, NEA-BC, FACHE
- Benjamin D. Ernst, Sr., LFACHE
- Charles R. Evans, FACHE
- Dorothy H. Mitchell, RN, LFACHE
- Johnathan W. Prins, RN, FACHE
- Tara M. Torrence, PharmD, FACHE
- LaTonya B. Washington, MD, FACHE
- John H. Williams, FACHE(R)

Prepare for the Board of Governors Exam with Our 2025 Prep Class Archive

To help our members prepare for the Board of Governors Exam to become Fellows, we're offering an archive of all the study materials presented in this Summer's 5-week prep class for \$50. Archived materials include links to videos of speakers' topic presentations and slide decks, class videos, quizzes, and quiz answer keys. [Learn More](#)



ACHE of Georgia President Lindsey Petrini, FACHE, recognized recent Fellow Ainsley Coley, RN, MSN, FACHE, at our September Lunch and Learn.

ACHE of Georgia welcomes the following new ACHE members and members who have trans- ferred to the chapter since August.

We hope to meet you soon.

- Laci Aboud
- Fernando Aleman, MBA, HCM
- Steve Aluoch, PharmD, MBA
- Blesson Andrews
- Stella N. Anukam, MD
- Charbel Aoun, MS
- Sabrina R. Arrowood, MS
- Aaron Badger
- Samitria Beasley, DHA, MBA
- Terin Blanchard
- Metadel Bogale
- Basil U. Bonifacio, MSN, RN, NEA-BC
- Jacquin Britton
- Latonya Brown
- Tammi Brown, MHA, BSN, RN
- Nitasha Burney, MD, CPE

Membership Report (Since August 2025)

New Chapter Members (continued from page 10)

- Jimel Carpenter, MS
- Armando R. Castillo, Jr., MD
- Nieka M. Chen, MBA, MHA
- Daniel S. Ciccio
- Adam Clark
- Shanika Conyers, APRN, NP
- Chianti Davis
- Isaac G. Deaguero, PhD
- Christina E. Downing
- Griffin J. Driver
- Julia Edwards
- Renata D. Ellington
- Maxine I. Elliott
- Jymielia K. Ervin
- Alana A. Finley, MS
- Rashunda Finley
- Justin Forte
- Erin Green
- Victoria Gulley
- Rajan Gupta
- Melanie Gwynn
- 1LT Delmar Halford
- Shani Hamilton-Crawford
- Sherrica Harris
- Stacey L. Heard
- Germyah N. Heart, MD
- Tracey L. Henry
- Tanya Hoebel
- Chad Holloway, PhD, MHA
- Tiffany A. Horn, MS, BSN, RN
- LaShonda R. Horton, MHA, MBA
- Amit Jaipaul
- Ryan Johnson
- Victor Jones
- Sharonjeet Kaur
- Sahara Khan
- Chastity Lewis, RN, MBA-HM
- Alyssa N. Lombres
- Michelle Lovely, MHA
- Ivie L. Lummus, MHA, BSN, RN
- Stephanie Lunt
- Miles Mahan
- Tawauna R. McClendon, DHA, MHA, BSc
- Kay N. Mitchell, DHSc

- Andy Mize
- Alexis Parrish
- Jennifer Penn, MHA, MS
- Reginald Phams
- Dalya Qualls White
- Emoy Reid
- Annaliese Reyes
- Monford Russell, MPH
- Catherine R. Schilling, BSN, MSN, PhD
- 2LT Jonathan Seok
- Caden S. Sime
- Tomia Sheares
- Torey Sledge
- Alicia Smith, DPT, PT
- Monica Stevens, DHA
- Christy Taylor, MSN, RN
- Tiffany R. Taylor
- Ginger Tuminello
- CDR Nicholas Walker, MSN, RN
- Jennifer L. Weaver, DNP
- Dalya Qualls White, EdD
- Jeanesha Word

ACHE OF GA Toastmasters Club Member Spotlight

Taylor Bennett

ACHE of Georgia
Toastmasters Club is
pleased to highlight
member Taylor Bennett,
2025 MHA Graduate from
the University of Georgia!



"For someone nervous about joining, my advice is just to give it a try and stick with it. Over time, you really get to know everyone in the club, and people genuinely care about each other's personal lives, well-being, and careers. The feedback you receive on speeches is constructive, not sugarcoated, but always shared in a positive way to help you improve. It's a community that wants you to succeed, which makes the learning process less intimidating and more rewarding."

Taylor Bennett, ACHE of GA Toastmasters Sergeant-At-Arms
University of Georgia 2025 MHA Graduate

Join Our Toastmasters Club

ACHE of Georgia has a virtual Toastmasters club and members and non-members are invited to be a part of our virtual club. [Learn More](#)



Thank You to ACHE of Georgia's 2025 Sponsors

Dear ACHE of Georgia Annual Sponsors,

On behalf of the American College of Healthcare Executives (ACHE) Georgia Chapter, we want to express our sincere thanks for your generous support. Your contributions are essential in helping us advance healthcare leadership in Georgia through professional development programs, networking, and educational initiatives.

Thanks to your sponsorship, we've made significant progress, and we're excited to continue collaborating in 2025 and beyond. Your commitment plays a key role in shaping the future of healthcare leadership, and we are grateful for your partnership. Thank you once again for your support.

Warm regards,
ACHE of Georgia Board of Directors

Find Out More About ACHE of Georgia Sponsorship

If your organization is interested in becoming an ACHE of Georgia sponsor, [click here](#) to visit our sponsorship page.

Platinum Sponsors



CANCER CENTER
ATLANTA



Gold Sponsors



Silver Sponsors





ACHE of Georgia Social Media: Connect with the Georgia Healthcare Community!

ACHE of Georgia offers several ways to connect with your healthcare colleagues through social media. Options include LinkedIn, Facebook, Instagram and X/Twitter. To join any of our social media groups, scan the QR code or visit www.acheofgeorgia.org/social.



CALL FOR CONTENT

Content submissions to the ACHE of Georgia newsletter are for reviewed for appropriateness by the Communications Committee. Please send your contributions, including articles, news, member accomplishments and photos to bruce.lloyd@gmail.com, no later than close of business by the 20th day of the last month of each quarter (March, June, September, December). Approved submissions made after this date will be placed into the next newsletter.

Please note that ACHE of Georgia reserves the right to reject submissions that are not consistent with the goals and purposes of the organization. Articles that endorse or appear to endorse specific products, businesses, services, and are self-promotional or advertorial will not be accepted. Subjects that are appropriate deal with healthcare industry news (national and local), career management, leadership, mentoring, diversity and other professional topics. If you are not sure, please ask.

Articles submitted for the newsletter must be relevant to professional development or healthcare administration. Please format content in a Microsoft Word document, left justified, and be 1-2 pages in length. The content of the article must include: title; name of the author; the source the article was obtained from; full URL that links to the article (if applicable). Please submit photographs as email attachments in JPG file format. Please do not embed photographs in your article text. Provide name and affiliation of any person shown in photographs along with a brief caption. When using a reprint article, please provide credit to the author and/or obtain permission to use the article before submission.

ACHE of Georgia reserves the right to edit, change or omit certain content (including photographs) because of length, style, relevance, or simply due to lack of space as deemed appropriate.