

An Independent Chapter of



American College of  
Healthcare Executives  
*for leaders who care®*

#### IN THIS ISSUE:

REGENTS MESSAGE

CALL FOR BOARD NOMINATIONS

UPCOMING EVENTS

ACHE OF GEORGIA NEWS

EVENT HIGHLIGHTS

STUDENT CORNER

ACADEMIC SCHOLARSHIP  
APPLICATIONS DUE SEPTEMBER 5

JOINT HOLIDAY EVENT

FELLOWS RECOGNITION

NEW MEMBERS

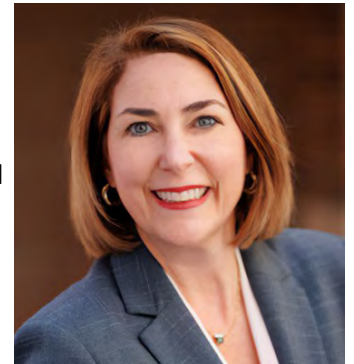
THANK YOU TO OUR SPONSORS

CONNECT WITH ACHE OF GEORGIA

#### President's Letter:

Dear ACHE of Georgia Members,

We are halfway into 2025, and ACHE of Georgia has had a lot going on and a lot of areas to celebrate. We had over 200 Chapter members travel to Houston for the ACHE Congress on Healthcare Leadership. It was a record number of Georgia participants. Adding to the excitement, our Chapter received prestigious recognition from ACHE, earning awards for both Chapter Distinction and Sustained Performance.



*Lindsey H. Petrini, FACHE*

ACHE of Georgia has been a hub of local activity, fostering networking, education, and connection through a variety of events. Earlier this year, we hosted a fabulous summit in Savannah, Georgia—a true highlight that brought members together from all over the state. As we work to continue to advance programming across the state, [networking events](#) are being held in Athens, Augusta and Atlanta on August 7 offering opportunities to forge new relationships and strengthen existing ones. Additionally, our virtual events continue to reach members across the state.

I am thrilled to report that our membership continues to grow, also reaching record numbers. This growth signifies the trust and enthusiasm that healthcare leaders have in our organization and the value we provide. We've already had 17 individuals who advanced to fellow over the past few months and over 90 attendees at our recent Board of Governors review classes. I highly encourage everyone who meets the requirements for fellowship to work towards advancement. It is worth it!

As we look ahead, I want to express my deepest gratitude to each of you for your membership and active participation in ACHE of Georgia. Together, we will continue to build on this momentum, ensuring that our Chapter remains a vital resource for professional growth and connection.

Warm regards,

Lindsey H. Petrini, FACHE  
President, ACHE of Georgia

**Applications Due  
September 5!**



#### **ACHE of Georgia's 2025 Academic Scholarships**

This Fall, ACHE of Georgia is offering two \$2,500 Academic Scholarships to students in our chapter who are pursuing healthcare-career-focused Master's degrees. Applications are due September 5. **See page 8 for details.**

**Regent's Message**

## The Impact of a Mentor

I was fortunate to have a mentor early in my career. Chuck Stokes was my first boss out of graduate school and my preceptor during my fellowship. Some of you may have also been lucky enough to know Chuck, a former healthcare executive, servant leader, and chair of the American College of Healthcare Executives (ACHE), who influenced many healthcare leaders across the country.

Over the past 20 years, Chuck made a tremendous impact on me, professionally and personally. He quickly became a friend, and, over time, felt like family. He helped shape who I strive to be every day. The world lost a great leader when Chuck unexpectedly passed away last year.

As a leader in the ever-evolving world of health care, it can sometimes feel like you are navigating uncharted territory alone. Mentors like Chuck can help you see through the challenges and beyond the moment. They offer perspective on tough decisions, encouragement during moments of doubt, and insight that sharpens judgment and builds confidence. I firmly believe that a mentor you can rely on is one of your most valuable assets.

In organizations like ACHE and ACHE of Georgia, mentorship programs support emerging leaders by providing a safe space to ask questions, explore ideas, and learn from the real-world experiences of those who have walked the path before. These programs also give more experienced leaders the opportunity to give back to the next generation through reflection and sharing of knowledge.

I hope you'll take advantage of these resources; visit [acheofgeorgia.org/career-development](https://acheofgeorgia.org/career-development) to learn more. Supporting and learning from each other is critical to the future success of our industry. If you are not currently serving as a mentor or mentee, I want to challenge you to participate in these great programs.

While there are many lessons I hold on to from my time with Chuck, I'll always remember his sayings. If you spent time around him, you undoubtedly heard some memorable ones, too. In honor of a great mentor, I'll close with

my 10 favorite Chuck-isms, in no particular order:

1. Plan your career path in 3-to-5-year blocks and commit your plan to writing.
2. Be authentic in all relationships, personal and business.
3. Feedback is a gift, and we only give gifts to people we care about.
4. You are always on stage, inside and outside the organization.
5. Sometimes you must tell people to "catch the vision or catch the bus."
6. Most harmful events are a result of broken processes, not bad employees.
7. Your integrity is your #1 asset. Any action or reaction to a situation either enhances or diminishes your integrity.
8. Time with family is precious and should be protected.
9. When you ask what I am doing today, and I say "nothing," it doesn't mean I am free; it means I am doing nothing.
10. When I say, "the other day," it could be referencing any time between yesterday and 15 years ago.

In a field like ours where challenges are complex, stakes are high, and pressure to lead with strength and compassion is constant, the guidance and support of a mentor can make all the difference.

Warmest Regards,

John Kueven, FACHE  
Regent – Georgia



*John Kueven, FACHE*

## Call for Nominations for the 2026 ACHE of Georgia Board Slate of Officers

Are you an active member in good standing with ACHE and ACHE of Georgia? WE NEED YOU! Be a part of leading ACHE of Georgia into the future and choose to serve!

### Slate of Officers for Nomination:

**1) Vice President:** The candidate must be certified in healthcare leadership holding the ACHE designation of FACHE. The Vice President will automatically succeed to the office of the President and Chair of the Nominating Committee (due to automatic succession, nomination for the President position is unnecessary).

**2) Secretary:** Serving as the Secretary to the Board of Directors, this position is the record keeper of the ACHE of Georgia corporate records and membership. Provides notices, prepares and signs minutes, and assists with interpretation of bylaws. The candidate should be organized with timely follow-through.

**3) Treasurer:** The successful candidate shall be knowledgeable in basic accounting principles. The Treasurer has oversight of the financial matters of ACHE of Georgia, shall receive and distribute funds, submit monthly financial reports, and work in collaboration with our accounting firm to prepare and preserve proper financial and tax records.

**4) Members at Large (eight positions):** Members at Large are elected to serve on the Board of Directors. Members at Large serve as advisors to the board, are representatives of the membership and serve in various positions such as Chair of the Programs Committee, Membership Committee, Communications Committee, and other committees.

### How to Submit a Nomination:

Candidates should email an application to ACHE of Georgia Vice President Sanford Duke, MD, MBA, FACHE, ([sanford.duke@atriumhealth.org](mailto:sanford.duke@atriumhealth.org)) that includes the following:

Resume or Curriculum vitae

1. A brief statement on your desire and commitment to serve
2. Two letters of reference

**Deadline for Board Nomination Submission:** August 8, 2025

**Submit Nominations to:** Sanford Duke, MD, MBA, FACHE, Vice President of ACHE of Georgia, at [sanford.duke@atriumhealth.org](mailto:sanford.duke@atriumhealth.org).

Our 2026 Board slate will be elected at our November 13 Annual Business Meeting and lunch and learn.

### ACHE of Georgia Nominating Committee:

- Lindsey Petrini, FACHE, President
- Sanford Duke, MD, MBA, FACHE, Vice President
- Jon-Paul Croom, FACHE, Immediate Past President
- John Kueven, FACHE, ACHE Regent for Georgia

#### Have a particular interest in serving on a committee?

Please let us know as we would love to have you join us. Current committees include Career Development, Communications, Diversity and Inclusion, Fellow Advancement, Membership Growth and Satisfaction, Physician Executives, Programs, Clinician Executives, Senior Executives, and Sponsorship. [Click here](#) to view descriptions of each committee and submit your application for committee membership.

## Upcoming Events

### Upcoming Events:

- **August 7, 2025, 6:30 PM to 8:30 PM** -- Networking Night Across Georgia with events in Atlanta, Athens, and Augusta. [Learn More and Register.](#)
- **August 21, 11:30 AM to 2:00 PM** -- "Bending the Execution Curve: Implementing Successful Organizational Change in Hospitals and Healthcare Organizations," ACHE of Georgia lunch and learn at Maggiano's in Buckhead. 1.5 hours of In-Person Education credit. [Learn More and Register.](#)
- **August 28, 12:00 PM to 1:00 PM** -- "Lessons from Gaza: Health Care in Crisis," ACHE of Georgia webinar. 1 hour of Qualifying Education credit. [Learn More and Register.](#)
- **September 4, 12:00 PM to 1:30 PM** -- "Rebuilding Public Trust Following Hospital Clinical and Managerial Errors," Virtual Interactive session. Mark your calendar!
- **September 17, 7:00 AM to 4:30 PM** -- Health Connect South, Georgia Aquarium. ACHE of Georgia is a community sponsor of this event, and we will have a panel discussion as part of the event. 20% discount for ACHE members. [Click here](#) for the registration code.
- **September 25, 11:30 AM to 2:00 PM** -- "Designing a More Efficient and Higher Quality Patient-Centered Healthcare Delivery Facilities Model," ACHE of Georgia lunch and learn. Joint program with Association of Medical Facility Professionals Atlanta Chapter.

Register for Events at

[www.acheofgeorgia.org/events](http://www.acheofgeorgia.org/events)

# NETWORKING NIGHT *Across Georgia*



**Date:**  
**August 7th, 2025**  
**6:30pm – 8:00pm**

Three locations are Atlanta, Augusta and Athens

- **Atlanta – New Realm Brewing Co.**  
*Joint Event with*  **Bonne Fire ATL**
- **Athens – Creature Comforts Downtown**
- **Augusta – Cavalier's Coffee**

Scan the QR code below for details or visit  
**[www.acheofgeorgia.org](http://www.acheofgeorgia.org)**

Social Media





An Independent Chapter of  
American College of  
Healthcare Executives  
for leaders who care.

 Repost and + Follow

More Info



**Registration Now Open**  
**1.5 Hours of ACHE In-Person Education Credit**

**ACHE of Georgia In-Person Lunch and Learn**  
**August 21, 11:30 AM - 2:00 PM ET**  
**Maggiano's Buckhead**  
**1.5 Hours of ACHE In-Person Education Credit**

Join us on August 21 at Maggiano's in Buckhead as our panel of experts discusses "Bending the Execution Curve: Implementing Successful Organizational Change in Hospitals and Healthcare Organizations."

**And earn 1.5 hours of ACHE In-Person Education credit!**

**Bending the Execution Curve: Implementing Successful Organizational Change in Hospitals and Healthcare Organizations**



**Moderator**  
**Nicole Denham, FACHE, MHA, RN,**  
Chief Clinical Innovation Officer, DEPTH Health



**Panelist**  
**Kevin D. Gordon, MBA,**  
Vice President, Supply Chain, Grady Health System



**Panelist**  
**Cary Tiede, MBA,**  
Chief Transformation Officer, Children's Healthcare of Atlanta

**Register Now at [www.acheofgeorgia.org](http://www.acheofgeorgia.org) or Scan QR Code**

Social Media





An Independent Chapter of  
American College of  
Healthcare Executives  
for leaders who care.

 Repost and + Follow

More Info





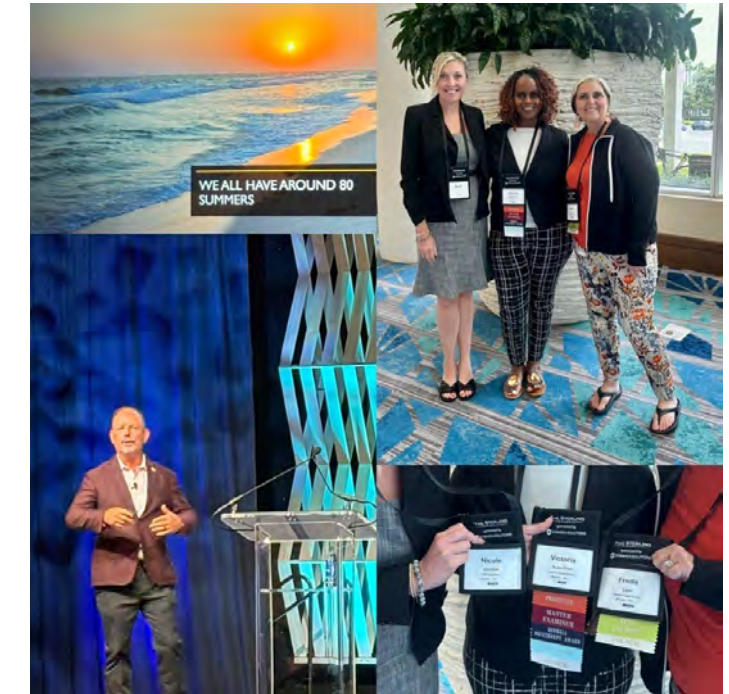
## Bringing Excellence Home: Lessons from the Sterling Conference

I recently had the honor of representing ACHE of Georgia at the Sterling Leadership Conference in Orlando, and I want to extend my deepest thanks to the organizers and speakers for their warm welcome and impactful programming. The energy, depth, and clarity around the pursuit of organizational excellence were truly inspiring.

The Sterling Conference is grounded in the Baldrige Performance Excellence Framework, a model that helps organizations, especially in healthcare, align strategy, operations, and performance outcomes. While some may know it as a blueprint for large health systems or academic medical centers, I left Orlando reminded that its strength lies in its versatility. Whether you're a startup or an established provider, the Baldrige model offers a roadmap for continuous improvement, leadership accountability, and measurable results.

As someone who advises early- and growth-stage healthtech companies, I see a profound opportunity to integrate the Baldrige principles into how we support innovation. From helping founders focus on systems thinking and strategic alignment, to building cultures that value learning, results, and customer-driven excellence, the model provides a common language for scaling both impact and integrity.

ACHE of Georgia is a community filled with leaders navigating change, and frameworks like Baldrige can guide not



just what we do, but how we grow. I'm excited to bring back the insights and tools I've gained and explore ways we can apply them across our member initiatives.

To the Sterling team: thank you again for the invitation. You've lit a spark, and I look forward to helping carry it forward here in Georgia.

Warmly,

Nicole Denham, FACHE, MHA, RN  
ACHE of Georgia Secretary

## Larry Tyler Receives Army Medical Service Corps Honor at ACHE Congress

Congratulations to J. Larry Tyler, LFACHE, FHFMA, CMPE, on his induction into the Order of Military Medical Merit by the Army Medical Service Corps at ACHE Congress in Houston.

This distinguished honor recognizes Larry's contributions to the benefit of military officers and enlisted personnel as they moved from the military to the civilian healthcare sector.

His ACHE Congress Course, "Transitioning from Military to Civilian Healthcare," is the longest-running course at Congress and he taught it for 36 years.



*Larry Tyler (left) at the induction ceremony at ACHE Congress in Houston.*



## ACHE of Georgia Event Highlights



*We kicked off our May 1 Summit on the Coast event with Cocktails on the Coast in Savannah on April 30. We had a great turn out and lots of fun.*



*Our morning Summit session featured an excellent presentation by Mitchell E. Kusy, PhD, who discussed Toxic Behaviors in Healthcare.*



*We opened Summit on the Coast with a fireside chat with our keynote speaker Emory Healthcare CEO Joon Lee, MD, and Gina Tipton, FACHE, CEO of Encompass Health.*



*Group shot at the Cocktails on the Coast networking event on April 30.*



*Special thanks to Kaiser Permanente for sponsoring our Summit on the Coast Keynote session with Emory Healthcare CEO Joon Lee, MD, and featuring an introduction by Corwin Harper, FACHE, President, Kaiser Permanente Georgia Region.*



*Our May 16 lunch and learn featured Hannah M. Palmquist, Chief of the Human Trafficking Prosecution Unit at the State of Georgia Office of the Attorney General. She shared how healthcare executives can play a critical role in combatting human trafficking.*



## ACHE of Georgia Event Highlights



Our mentorship group concluded this year's program with a "Walk the Beltline" networking event at New Realm Brewing. We also connected with Bonne Fire Atlanta as they were doing a networking event as well.



Our June 19 lunch and learn covered ethical challenges in healthcare involving AI. From left are Tyler Wallace, Ph.D., MBA, Savneet Singh, Pranav Jain, MD, MBA, FHM, and moderator David Lluberes.



Career Development Subcommittee Chair Bonnie Matthews, MSN, RN, LSSBB, and her mentee Fitzgerald Reed, DSL, MBA, at the Walk the Beltline event.

Mentor Kevin Dover, FACHE (Left) with his mentee Michael Burnett at the Walk the Beltline networking event.



**Registration Now Open!**  
**1 Hour of ACHE Qualifying Education Credit!**

**ACHE OF GEORGIA**  
**Virtual Education Program**

**"Lessons from Gaza: Health Care in Crisis"**

**August 28, 12:00 PM to 1:00 PM ET, Via Zoom**  
**1 Hour of ACHE Qualifying Education Credit**

Join us via Zoom at noon ET on August 28 for "Lessons from Gaza: Health Care in Crisis," with our guest speaker Ayaz Pathan, MD, MBA, FACEP, Divisional President, ApolloMD.

Lessons from Gaza use frontline stories and evidence-based practices to explore health care delivery during crisis. Learn how to tackle access barriers, staffing shortages, and supply chain failures and prepare your system for the unexpected.

**Social Media**

**More Info**

**ACHE OF GEORGIA**

Repost and Follow

**Ayaz Pathan, MD, MBA, FACEP**

## ACHE of Georgia Student Corner

*A section tailored for ACHE of Georgia student associates, written by students.*

### University of Georgia MHA Program Receives CAHME Accreditation

*by Naomi Castillo, MHA Candidate at UGA*

Some exciting things are happening this summer! All current UGA MHA students have begun their internships and have started to gain a hands-on experience in hospitals and healthcare organizations across Georgia. Applying the knowledge and skills developed from the classroom to the real world.

Along with these student accomplishments, we are also celebrating a huge milestone that reflects the quality of our program. Last week the University of Georgia Master of Health Administration program officially became CAHME accredited.

This recognition from the Commission on Accreditation of Healthcare Management Education (CAHME) confirms what we as students have known for a long time. That our program meets the rigorous standards for curriculum, outcomes, and alignment with the best practices in the healthcare management field. For us, this accreditation is more than a credential. It highlights the exceptional edu-

cation we are receiving and demonstrates the dedication of our faculty and administration. Who have worked so hard to prepare us for careers in the healthcare industry.

We are incredibly grateful to this program's leadership for their unwavering commitment throughout this process. Our program director, in particular Dr. Jessica Smith, has been a crucial part not only in guiding the program to success but also in supporting us as future healthcare leaders. This is a proud moment for the UGA MHA community. We are excited to be part of a program that continues to raise the bar in healthcare education and excited to see what the future brings.



*Naomi Castillo*

### ACHE of Georgia Accepting Applications for Academic Scholarships

***Deadline Is September 5***

ACHE of Georgia is pleased to announce that we will offer two \$2,500 academic scholarships this fall. The scholarships will be awarded to ACHE Student Associate members or regular ACHE members assigned to the Georgia chapter who are enrolled in an accredited college or university pursuing a healthcare-career-focused Master's degree, such as MHA, MPH, MBA, or another related graduate degree.

Students who meet the requirements are invited to submit an online [scholarship application](#) by September 5, 2025, to be considered for the scholarship.

Please read the criteria carefully to see if you qualify, and

please share this message with anyone you think does qualify.

ACHE of Georgia's goal is to foster lifelong learning, and this is another example of how our chapter intends to fulfill that. All of this could not be possible without the tremendous support of our membership, sponsors, and board members.

#### **Application Deadline**

Application materials must be received by 10:00 PM on September 5. Application materials must be submitted electronically via the [application form](#). Academic Scholarship recipients will be notified by the end of October.



## Congratulations to ACHE of Georgia's 2025 Fellows (Since January 1)

- > Daniel A. Abad, MBA, FACHE
- > Philicia Andrews, MD, MBA, FACHE
- > William T. Blackburn, MBA, FACHE
- > Robert J. Brown, FACHE
- > Brian Evans, FACHE
- > Murry Ford, FACHE
- > Diana R. Gillogly, FACHE
- > Trent Goode, II, FACHE
- > Rev. Christopher S. Jennings, FACHE
- > COL John A. Johnson, MD, MBA, FACHE
- > Hyeseung Kang, PharmD, FACHE
- > Ijeoma Kene-Ewulu, MD, FACHE
- > Nakia S. Mattis, DHA, MBA, MPH, PMP, FACHE
- > Robert M. Maxwell, FACHE
- > Robert Norris, FACHE
- > Mark G. Stevens, MBA, PT, BS, FACHE
- > MAJ Matthew Woods, FACHE

If you are interested in learning how to become an ACHE Fellow, [click here](#) to view information on ACHE's website.

### ACHE of Georgia/Georgia HIMSS December 4 Joint Holiday Event Sponsorship Opportunities

ACHE of Georgia and Georgia HIMSS are hosting a [joint holiday event](#) and awards program at Lake Lanier Islands Peachtree Point on December 4. This is a great opportunity to show your support for both organizations as we celebrate the holidays together and recognize our achievements.

Our sponsorship tiers are:

- Senior Executive Fireside Chat: \$3,000, one available (pre-event by invitation only)
- Joint Holiday Event General Sponsorship: \$1,500

[Click here](#) for sponsorship details.

### Join Us for Our Annual Joint Holiday Event!

December 4, 6:30 PM to 8:30 PM  
Lake Lanier Islands, Buford

#### About the Event:

Join us for a festive evening of networking and holiday cheer, where you can connect with professionals from all over Georgia. Feel free to invite a colleague to share in the celebration and don't forget to bring your business cards. It's also the perfect opportunity to show off your favorite holiday attire!

#### Location:

Lake Lanier Islands Peachtree Point Pavilion, Buford, GA



**Sponsorships Available!**

More Information



**HIMSS  
GEORGIA  
CHAPTER**

Scan QR Code to Register



Registration Open Now at [www.acheofgeorgia.org](http://www.acheofgeorgia.org)

## Membership Report (Since April 2025)

### Fellows Recognition

#### New ACHE Fellows:

Congratulations to these ACHE of Georgia members who achieved their [Fellow of ACHE \(FACHE\)](#) credential since our last newsletter. Please take a moment to congratulate your colleagues for their commitment to advancing their healthcare careers:

- Daniel A. Abad, MBA, FACHE
- William T. Blackburn, MBA, FACHE
- Robert J. Brown, FACHE
- Brian Evans, FACHE
- Ijeoma Kene-Ewulu, MD, FACHE
- Rev. Christopher S. Jennings, FACHE
- COL John A. Johnson, MD, MBA, FACHE
- Nakia S. Mattis, DHA, MBA, MPH, PMP, FACHE
- Mark G. Stevens, MBA, PT, BS, FACHE
- MAJ Matthew Woods, FACHE



*ACHE of Georgia President Lindsey Petrini, FACHE, recognized recent Fellow Hyeseung Kang, PharmD, FACHE, at our April Lunch and Learn.*



*At our May lunch and learn, ACHE of Georgia VP Sanford G. Duke, MD, MBA, FACHE, presented Murry Ford, FACHE, with his Fellow pin.*

#### We recognize the following members who recently recertified their Fellow status:

- Donny P. Abraham, RN, FACHE
- J. Michael Butler, FACHE
- Lori L. Cassidy, FACHE
- Herimone L. Chappell, MD, FACHE
- Teara J. Collins, FACHE
- Jane P. Gray, CPA, FACHE
- Angela Henry, FACHE
- Lily J. Henson, MD, FACHE
- Jerry Dwayne Hooks, Jr., PhD, FACHE
- Julia H. Jones, FACHE(R)
- Felicia Bolden Mobley, PhD, FACHE
- Tom Morris, FACHE
- James A. Nixon, FACHE
- Kelly L. Norling, FACHE
- John D. Quinlivan, Jr., LFACHE
- Dawn M. Morton-Rias, EdD, FACHE
- Candice L. Saunders, LFACHE
- Nelson So, FACHE
- W. Asbury Stembridge, Jr., LFACHE
- Frances W. van Beek, FACHE
- Blakely D. Watts, FACHE
- Sherry N. Williams, FACHE

### Prepare for the Board of Governors Exam with Our Summer 2025 Prep Class Archive

To help our members prepare for the Board of Governors Exam to become Fellows, we're offering an archive of all the study materials presented in this Summer's 5-week prep class for \$50. Archived materials include links to videos of speakers' topic presentations and slide decks, class videos, quizzes, and quiz answer keys. [Learn More](#)



## Membership Report *(Since May 2025)*

**ACHE of Georgia welcomes the following new ACHE members and members who have transferred to the chapter since May. We hope to meet you soon.**

- Melissa N. Adams
- Opeyemi O. Akintimehin
- Sameer Baig, MD
- Ingrid Baillie, MSN, RN
- Chanavian Baugh
- Joy Bello
- Tiffany Benjamin
- Monica Branch, MD, MS
- Danielle Brown
- Angela Brown
- SSG Rayshawn Burch, BS, MHA
- Mark Canada
- Shaniqua Clancy, BS, MHA
- Lindsey Clay
- Melissa W. Clements, MSN, RN
- John Cole
- Griffin M. Collier, MHA
- Sage Cooley
- Chris Corde
- Christopher B. Cranshaw
- Alex Davidovich, DPT, PT
- Lisa A. Donohue
- Jessica E. Duke, MBA, BSN, RN
- Rashida Elliott
- Rosemary O. Fashogbon, MD, PhD
- PO2 Adam M. Fazilat
- Edward V. Fletcher, MBA, MHA
- Osmin L. Flowers
- Brian Fuller, FACHE
- 1Lt (MSC) Gregory Gainty, BS
- Katlyn A. George
- Justin Green
- Kristi A. Halsell, AuD
- Matthew Hanley, MD
- Suzanne Heck
- Susan Holman
- Kristin Holman
- Nicole Hooper
- Heather Howard, RRT
- Kevin B. Hysmith
- Pearly S. Ittickathra
- Rev. Willie J. Jackson, III, MHA
- Rachel M. Jenkins
- Julie Jines
- COL John A. Johnson, MD, MBA, FACHE
- Rodesha Johnson
- Jennifer B. Johnston
- Selene Jones
- Sydney Kaufmann
- Phillip J. Kelly, OD
- Kate Koplan
- Hunter Kurek, BSN
- SrA Linae Landry
- Robert J. Maloney, Jr.
- Alexandria M. Masocco
- Varti Mckinnon
- Malissa McNally
- Otito E. Okpalannaka
- Blessing O. Onuigbo
- Olabisi O. Oshikanlu, MD, MBA, CPE
- MAJ Vincent E. Pair
- LTC Justin Pao
- Krishna Y. Patel, MBA
- Anita Pearson-Sherrod
- Patrice Peters
- Jeena E. Philip, MSN, RN
- Angela Philpot
- Shanetria Pierson
- Mary Portwood
- George D. Pressley, MBA
- Tina C. Ragsdale
- Daniel Ralston, MD
- Ana Recendiz, DPM
- Ashly R. Revoy
- Barret D. Rhoads, FACHE
- Chad Roberson, MBA, MHA
- LaTesa H. Roberts
- Billy E. Roberts, MBA, PA-C
- Deidre Robinson
- Tammy Rowe
- Alphonso Sanders, DHA
- Kent Seckinger
- James D. Shehy
- James Simpson
- Christa-Marie Singleton, MD, MPH
- Letitia K. Skelton
- Gary S. Smith, MBA, PA-C
- Dustin S. Smith
- Babatunde Sobowale, MD, MBA, MHA
- Lindsey Sorensen
- William Steed
- Teresa Summerhill
- Wesley Taylor, FACHE
- Julia Taylor
- Chasity D. Tharpe, MPH
- Tarah J. Tracy, MA, BS
- Stephanie Troncalli, FACHE
- Kelly A. Trummer
- David M. Walker, FACHE
- Dr. Clyde Watkins
- HM2 Michael Weatherall-Keck
- Chiquita White, BS
- Mia T. Willhite, FACHE
- Steven M. Williams, MHA
- Lisa Williams
- Jonathan Wood, MBA
- Shawnise Woods
- Jacqueline M. Woodward

## Thank You to ACHE of Georgia's 2025 Sponsors

Dear ACHE of Georgia Annual Sponsors,

On behalf of the American College of Healthcare Executives (ACHE) Georgia Chapter, we want to express our sincere thanks for your generous support. Your contributions are essential in helping us advance healthcare leadership in Georgia through professional development programs, networking, and educational initiatives.

Thanks to your sponsorship, we've made significant progress, and we're excited to continue collaborating in 2025 and beyond. Your commitment plays a key role in shaping the future of healthcare leadership, and we are grateful for your partnership. Thank you once again for your support.

Warm regards,  
ACHE of

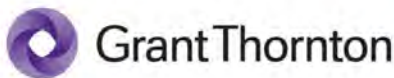
### Find Out More About ACHE of Georgia Sponsorship

If your organization is interested in becoming an ACHE of Georgia sponsor, [click here](#) to visit our sponsorship page.

### Platinum Sponsors



### Gold Sponsors



### Silver Sponsors







## **ACHE of Georgia Social Media: Connect with the Georgia Healthcare Community!**

ACHE of Georgia offers several ways to connect with your healthcare colleagues through social media. Options include LinkedIn, Facebook, Instagram and X/Twitter. To join any of our social media groups, scan the QR code or visit **[www.acheofgeorgia.org/social](http://www.acheofgeorgia.org/social)**.



### **CALL FOR CONTENT**

Content submissions to the ACHE of Georgia newsletter are for reviewed for appropriateness by the Communications Committee. Please send your contributions, including articles, news, member accomplishments and photos to [bruce.lloyd@gmail.com](mailto:bruce.lloyd@gmail.com), no later than close of business by the 20th day of the last month of each quarter (March, June, September, December). Approved submissions made after this date will be placed into the next newsletter.

Please note that ACHE of Georgia reserves the right to reject submissions that are not consistent with the goals and purposes of the organization. Articles that endorse or appear to endorse specific products, businesses, services, and are self-promotional or advertorial will not be accepted. Subjects that are appropriate deal with healthcare industry news (national and local), career management, leadership, mentoring, diversity and other professional topics. If you are not sure, please ask.

Articles submitted for the newsletter must be relevant to professional development or healthcare administration. Please format content in a Microsoft Word document, left justified, and be 1-2 pages in length. The content of the article must include: title; name of the author; the source the article was obtained from; full URL that links to the article (if applicable). Please submit photographs as email attachments in JPG file format. Please do not embed photographs in your article text. Provide name and affiliation of any person shown in photographs along with a brief caption. When using a reprint article, please provide credit to the author and/or obtain permission to use the article before submission.

ACHE of Georgia reserves the right to edit, change or omit certain content (including photographs) because of length, style, relevance, or simply due to lack of space as deemed appropriate.