

An Independent Chapter of



American College of  
Healthcare Executives  
*for leaders who care®*

**IN THIS ISSUE:**

2025 BOARD SLATE ANNOUNCED

REGENT'S MESSAGE

UPCOMING EVENTS

EVENT HIGHLIGHTS

STUDENT CORNER

BOG PREP COURSE ONLINE ARCHIVE  
AVAILABLE

NEW FELLOWS AND MEMBERSHIP  
REPORT

SPONSORSHIP

CONNECT WITH ACHE OF GEORGIA

**ACHE of Georgia's 2025 Board Slate  
Has Been Announced —  
See Page 2 for Details**

***Attention Fellows:***

**Volunteer Opportunity with MedShare  
Available on September 28**

Do you need public service  
hours to apply for or main-  
tain the Fellow designation?  
Our Fellow Advancement



MedShare

Committee has arranged a volunteer day at MedShare on September  
28 from 9 AM to Noon. We hope you can join us.

[Click here](#) to learn more and sign up.

***Save the Date!***  
**December 5 Joint Holiday  
Event with Georgia HIMSS**



**Welcome to Our Newest Platinum Sponsor,  
Kaiser Permanente**

ACHE of Georgia is pleased to announce that Kaiser Permanente  
has joined as an annual Platinum Sponsor. Be sure to visit Kaiser  
Permanente's website at [www.kp.org](http://www.kp.org).

We appreciate all of our annual sponsors' support of our chapter.  
For a complete list of annual sponsors and other details on spon-  
sorship, see [page 11](#) of this issue.



**KAISER  
PERMANENTE®**

## ACHE of Georgia 2025 Board of Directors Slate

### *Election to Be Held at November 7 Business Meeting*

ACHE of Georgia's Nominating Committee has met and offers the following slate of Officers and Directors for your consideration for the 2025 chapter year. Voting will take place at the ACHE of Georgia [Annual Meeting and luncheon](#) at Maggiano's on Thursday, November 7, 2024, from noon to 1:30 pm ET as part of our monthly lunch and learn. Click the names of candidates listed below to view their bios or LinkedIn profiles.

President – [Lindsey Petrini](#), FACHE (automatic succession)

Vice President – [Sanford G. Duke](#), MD, MBA, FACHE

Secretary – [Nicole Denham](#), MHA, RN, FACHE

Treasurer – [Felix Soto Izaguirre](#), MBA, FACHE

Immediate Past President – [Jon-Paul Croom](#), MSHA, MBA, FACHE (automatic succession)

At-large Member – [Sepi Browning](#), FHIMSS, CHCIO, eFACHDM, FACHE

At-large Member – [Jennifer J. Giusti](#), FACHE

At-large Member – [Lily J. Henson](#), MD, FACHE

At-large Member – [Tammy T. Jackson](#)

At-large Member – [Lorraine C. Smith](#), FACHE

At-large Member – [Anthony J. Saul](#), FACHE

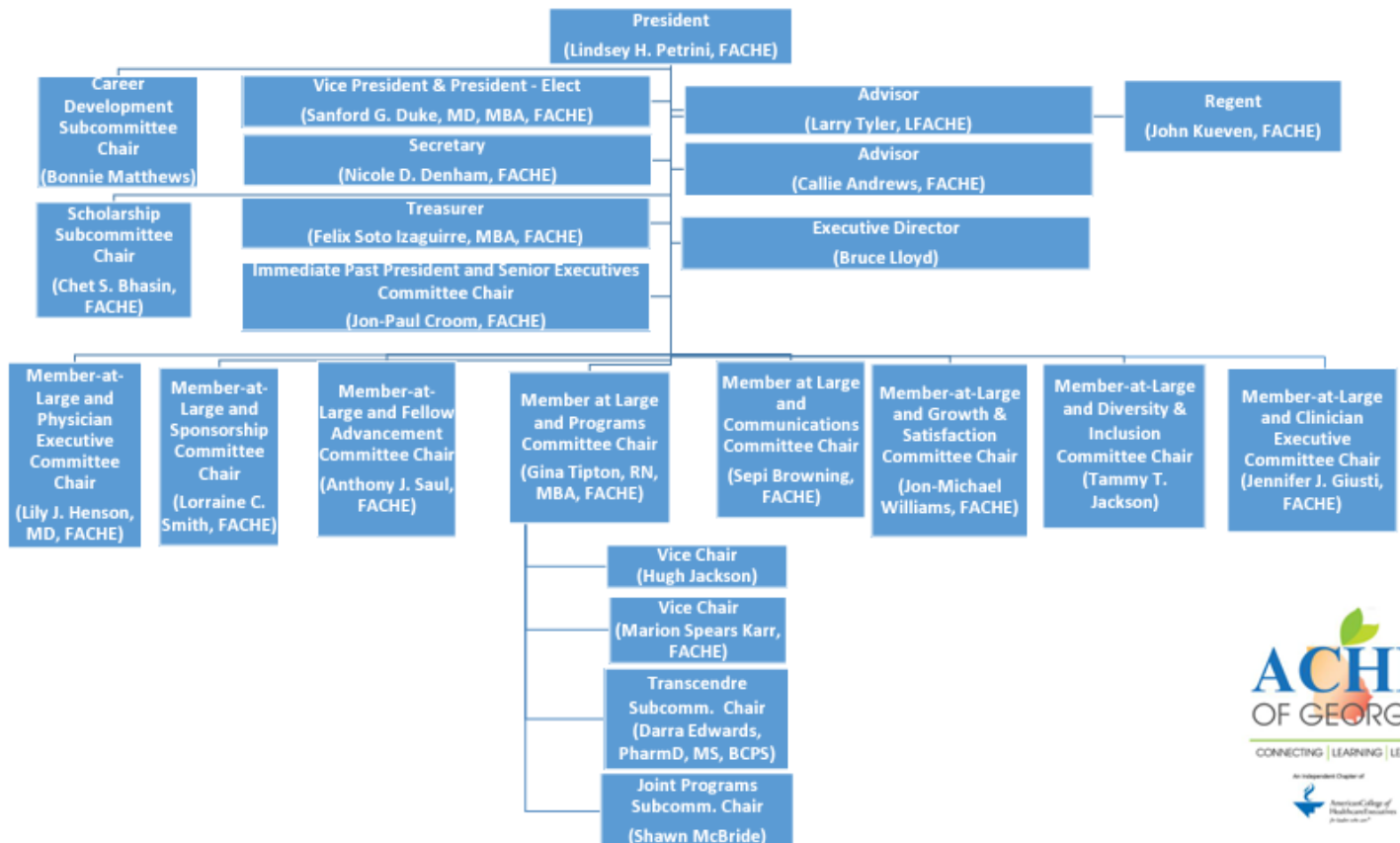
At-large Member – [Gina Tipton](#), RN, MBA, FACHE

At-large Member – [Jon-Michael Williams](#), FACHE

ACHE Regent Director – [John Kueven](#), MHA, RN, FACHE (ex officio)

The proposed [2025 ACHE of Georgia organizational structure](#), including the candidates above and committee and sub-committee chairs, is shown below. With the exception of the Regent Director, President, and Immediate Past President, officers shall be elected by a majority of the voting membership present at the annual meeting of the membership. The Vice President automatically succeeds to the office of President and the President automatically succeeds to the office of Immediate Past President.

## 2025 ACHE of Georgia Organizational Structure - Proposed



### Healthcare Leadership is a Calling

When I worked for a hospital in Katy, Texas, I oversaw incident command during Hurricane Harvey, one of the most destructive hurricanes in U.S. history. Throughout my career, I've been involved with a variety of teams handling natural disasters, mass injuries and the COVID pandemic. While it may be challenging to recognize in the moment, these types of situations can stretch us - both as leaders and individuals. We can learn some of the most valuable lessons while supporting our teams through difficult, heartbreaking and tragic circumstances.

We all recognize that frontline team members are nothing short of heroic, often caring for victims and communities while demonstrating selflessness and humanity. I witnessed this firsthand during the aftermath of the Sept. 4 school shooting at Apalachee High School in Winder, Georgia. That morning I received a call I never really expected, there was an active shooter at a high school and our health system would need to respond; my heart dropped and my mind started going in a thousand directions. This tragedy occurred within miles of one of my health system's hospitals, and our team - including EMS, clinicians, counselors and operational leaders - quickly sprang into action. Their response made me reflect on the critical role healthcare plays during and after a disaster. It's not only about providing emergency service in the moment, but also finding ways to offer compassion and encourage healing long after the media attention fades.

Unlike tornadoes or pandemics, a school shooting is uniquely tragic; it involves an intentional act of harm rather than a natural occurrence. As a parent of a 13-year-old, it has been particularly impactful for me to see our community deal with this devastating event. I see how deeply it touched a multitude of people - from students, teachers and parents in Winder to our own physicians and staff, as well as our neighbors, our region and the entire nation.

As this community tries to heal, and as we continue to support our frontline team, I can't help but reflect on the complex responsibilities of a healthcare leader. As you

know, this particular brand of leadership often involves tremendous stress, complex decisions and impossible choices. It also often comes with unexpected blessings and humanity.

On September 4, while we were figuring out how to support our staff, manage rumors and ensure we were doing everything

possible to support the impacted families and communities, many healthcare colleagues I've met throughout my career and ACHE reached out to check on me and our team, offer assistance and coordinate care. Even though several worked for competing health systems, they supported me - and continue to check in - during this challenging time. To those who reached out, THANK YOU. It means more to me than you know.

It can be easy to focus on the business side of health care and forget the human side of challenges we face. ACHE is a network of leaders committed to development, idea-sharing and building connections, but we are also working to make our industry better, more compassionate and more collaborative. For that, I am grateful.

We've all faced difficult situations over the past several months, and I guarantee there are more coming in the future. I challenge you to make the time this month to reconnect with a friend or former colleague. During a crisis, these relationships can make a difference in the healing process - whether you are seeking support or offering a helping hand.

We never know what tomorrow brings. Hug your family, celebrate with friends and support someone who is struggling.

Warmest Regards,

John Kueven, FACHE  
Regent for Georgia

[John.Kueven@nghs.com](mailto:John.Kueven@nghs.com)



*John Kueven, FACHE*

## Upcoming Events

### Upcoming Events:

- [September 28, 9:00 AM to Noon](#) -- Public service volunteer day at MedShare sponsored by our Fellow Advancement Committee.
- [October 1 Georgia HIMSS 2024 Annual Conference](#) — All day at Cobb Galleria Centre Atlanta, up to 5 hours of Qualifying Education Credit.
- [October 12 and 19](#)—ACHE of GC/THEF Board of Governors Exam Prep Webinar
- [October 17, 12:00 PM to 1:30 PM](#) — “Successfully Leading Change in Healthcare Organizations,” ACHE of Georgia virtual interactive program via Zoom. 1.5 Hours of ACHE Virtual Interactive credit.
- [October 21-23](#) — 2024 ACHE Atlanta Cluster, Omni Atlanta Hotel .
- [October 23-25 UAB National Symposium for Healthcare Executives](#) — Up to 7.5 ACHE In-Person Education Credits
- [November 7 ACHE of Georgia Lunch and Learn/Annual Meeting at Maggiano's in Atlanta](#) — “Improving the Bottom Line by Optimizing Patient Throughput.”
- [December 5 Senior Executive Fireside Chat and Joint Holiday/Networking Event](#) — Lake Lanier Islands. Mark your calendar!
- [December 12 Virtual Interactive Program](#) — "Meeting the Needs of Today's Healthcare Consumer." Mark your calendar!

Register for Events at

[www.acheofgeorgia.org/events](http://www.acheofgeorgia.org/events)

**Approved for 1.5 Hours of ACHE Virtual Interactive Credit!**



**October 17, Noon to 1:30 PM ET Via Zoom**

Join us via Zoom on October 17 as our panel of experts discusses, “Successfully Leading Change in Healthcare Organizations.” And earn 1.5 hours of ACHE In-Person Education credit!

**Registration is limited to 90, and the deadline is October 15.**



Social Media



An Independent Chapter of  
American College of  
Healthcare Executives  
for leaders who care.

More Info



## Sign Up Now for ACHE of Georgia's 2024-25 Mentorship Program

**Program Is Free to ACHE of Georgia Members as a Members-Only Benefit**

**In-Person Launch Party on November 12**

**Visit [www.acheofgeorgia.org](http://www.acheofgeorgia.org) or Click the QR Code Below to Learn More and Sign Up**



**Mentorship Application Deadline is October 1**

Social Media



An Independent Chapter of  
American College of  
Healthcare Executives  
for leaders who care.

Apply



*The Mentorship Program is a members-only benefit for ACHE members in Georgia.*



## ACHE of Georgia Event Highlights



*We had a great turn out for our Summit networking event at Reformation Brewing in Canton on August 21.*



*(From left) Dean Cikins, Jon-Paul Croom, and Duston Harper at our August 21 networking event.*



*(From left) Nichole Rydahl, Angela Henry, Callie Andrews, and Sepi Browning at our August 21 networking event.*



*Christopher Kunney was our keynote speaker at the August 22 Summit in Jasper.*



*(From left) Phindile Erika Chowa, MD, FACEP, and La Verne Hamilton at the August 21 networking event.*



*Trevor Straus (right) introduces our afternoon panel on "Rethinking the Ambulatory Care Network" at the August 22 Summit. From left are Eddie Lai, Christine Beam, Aiyanna Cottman, and Ben Anderson.*



## ACHE of Georgia Event Highlights



Our morning panel at the August 22 Summit discussed, "Meeting the Needs of Today's Healthcare Consumer." From left are Lauren Smeeding, Kevin Phipps, and Claudia Douglass.



ACHE of Georgia presented a panel on "The State of Healthcare" at Health Connect South on September 18. Trevor Strauss (right) moderated the panel, with (l to r) Josh Hargraves, MD, Robert Bunch, and Leigh Hamby, MD.



Senior Execs on Deck "tailgate" party at DTSpade's office before the September 5 Braves game at Truist Park.



Future healthcare executives at Georgia State University pose for a picture at Health Connect South on September 18.



Fun times at the Senior Execs on Deck event at the Braves game on September 5. The event was held in the Below the Chop space at Truist Park. Special thanks to Grant Thornton for sponsoring the event, and to DTSpade for hosting our tailgate party.



From left, David Tyler and John Sumnerlin (with event sponsor Grant Thornton), Stephen Vault, and Lindsay Demboski.



## UGA MHA Students Reflect on Their Summer Internships

After three months of immersive learning, UGA MHA students returned to their program with a new wealth of healthcare knowledge. Students spent the summer learning from experienced healthcare professionals spanning prestigious organizations across the East Coast. Returning to the classroom, they reflected on the key takeaways from their experiences. Here's a glimpse of what they have learned:

### 1. Data-driven decision-making enhances strategic initiatives.

At Emory Healthcare, **Becca Wildmon** and **Shirley Kumar** learned how the power of data shapes strategy. Throughout the summer, Becca developed a pro forma, highlighting the role of data in financial planning and deepening her interest in healthcare finance. The emphasis on data was mirrored in Shirley's experience, where she participated in executive meetings, underscoring the importance of leveraging data to guide strategic decisions. Their experiences help them understand the need for data-driven approaches to enhance operational efficiency and strategy.

### 2. Navigating complex environments requires an understanding of organizational structure.

At Mayo Clinic, **Kaleb Carter** observed how didactic partnerships help streamline operation and reinforce effective communication, ensuring patients are at the center of decision-making. Similarly, **Rachel Temin** applied the project management cycle to meaningful project work at Children's Healthcare of Atlanta, gaining a deeper understand-



*Rachel Temin Interned with Children's Healthcare of Atlanta*

## SUMMER '24 PLACEMENT STUDENT INTERNSHIPS



*UGA MHA Student Internship Placements over Summer 2024*

ing of organizational dynamics. Her experience has refined her career aspirations, focusing on program management with an interest in employee wellness.

### 3. Developing connections and community is essential for effective leadership and professional development.

At Locum Tenens, **Darby Walser** received exposure to multiple departments and learned how they work together to carry out initiatives. She is thankful for her preceptor's guidance and support, strengthening her confidence to navigate her next steps, with an interest in licensing and credentialing. **Trisha Patel** spent her summer with UPMC Hamot, participating in weekly rotations through service lines, reinforcing the importance of connecting with diverse leadership styles and team dynamics. Her connections have profoundly influenced her perception of leadership, setting a great example as she takes the next steps in her career

## ACHE of Georgia Student Corner

*A section tailored for ACHE of Georgia student associates, written by students.*

# UGA MHA Students Reflect on Their Summer Internships



*Lindy Burts, Shirley Kumar, and Becca Wildmon with their Emory Internship Cohort.*



*Students (clockwise from top left) Unu Eke, Jamie Westerfield, Rachel Temin, and Lindy Burts presenting about their internship experiences.*



*Trisha Patel with her UPMC Administrative Residency Cohort*



*Unu Eke and Darby Walser learned and lived Locum Tenens' values.*



*Kaleb Carter Interned with Mayo Clinic in Jacksonville, FL.*



## Membership Report (Since July 26, 2024)

### Fellows Recognition and New Members

#### New ACHE Fellows:

Congratulations to these ACHE of Georgia members who achieved their **Fellow of ACHE (FACHE)** credential since our last newsletter. Please take a moment to congratulate your colleagues for their commitment to advancing their healthcare careers:

- Nicholas S. Benton, FACHE
- Laura Price, FACHE
- Vivian M. Yu, FACHE

#### We recognize the following members who recently recertified their Fellow status:

- Al W. Allred, FACHE(R)
- Amelia Boyd, FACHE(R)
- Joanna J. Conley, FACHE
- Luis Fonseca, MHA, FACHE(R)

# FACHE

Fellow of the American College of Healthcare Executives  
*The Distinction of Board Certification*

If you are interested in learning how to become an ACHE Fellow, [click here](#) to view information on ACHE's website.

### Public Service Opportunity this Month

Do you need public service hours to apply for or maintain the Fellow designation? Our Fellow Advancement Committee has arranged a volunteer day at MedShare on September 28 from 9 AM to Noon. [Click here](#) to learn more and sign up.



## Prepare for the Board of Governor's Exam with ACHE of Georgia's Prep Class Archive

ACHE of Georgia's 2023 Board of Governors Exam Tutorial and Review course was presented over 5 weeks last fall. The class covered all 10 BOG exam topic areas. To help our members prepare for the Board of Governor's Exam, we're offering an archive of all the study materials presented in these sessions for \$50.

Archived materials include links to videos of speakers' topic presentations and slide decks, class videos, quizzes, and quiz answer keys

### Scan the QR Code Below for More Information

#### Social Media



An Independent Chapter of  
American College of  
Healthcare Executives  
*for leaders who care*

#### More Info



## Membership Report *(Since July 26, 2024)*

**ACHE of Georgia welcomes the following new ACHE members and members who have transferred to the chapter since July 26. We hope to meet you soon.**

- Nakia Abrams
- Ibukun Afon, MSHA, BSN, RN
- David Anderson, Jr.
- Chris Appleton
- Kyle P. Atkins
- Tori-Nicole Bailey
- Tonya Beckett
- Ginnie Berg, MBA
- Natasha M. Brocks
- Lexi Bromfield
- Afua A Celestin, DNP, FNP
- Mark Cussans
- George Dardey, BS
- Jeni Melissa Edrington
- Shaquetta N. German
- Sharon Giles, SHRM-CP
- PFC Douglas R. Gillespie, MSN
- Stephanie L. Gloster
- George B. Haizlip, Jr.
- Ronald C. Hartman, PharmD, MHA, FACHE
- COL Charlotte L. Hildebrand, PhD, FACHE
- Josef Hobdy, MHA, FACMPE
- Peter J. Iacobell
- Mfon Inyang, MD
- Jasmine Jarrett, MBA, BSN, RN
- Zontayvia S. Jiles, MBA, HCM
- Kimberly J. Johnson, MSN
- Igor Kilimnik
- Rodney J. Laster, FACHE
- John Lawhorn
- Timothy Lee
- Abeni Lee, MHA
- Jennifer P. Little, MBA, HCM
- Amir Malkami
- Michael Mantooth
- Lucas Marsh
- Roslyn S. Marshall, MS, RN, NEA-BC
- LTC Jerry A. Mayers, FACHE
- Micah McArthur, MSN, RN, NE-BC
- Corrin McCloskey, MPH
- John B. McCutcheon, MD
- Jake Neuber
- Augustine C. Okoye, MBA, MHA
- Chinedu Okpukpara
- Harrison E. Omoruyi
- Shivam Pandya, MD
- Susan Partain
- Anmol Patel
- Lesha Priest, MS
- Tariq Qureshi
- Fitzgerald A. Reed, DSL, MBA
- Covea Robertson, BS, MHA
- Aileen Savino
- Melissa Shorrock, BSN
- Praveen Singh, MBBS
- Brian Sloan
- Jason A. Studley, DHA, MHA, BSc, FACHE
- Capt ilyasah Sullen, MHA, MSN, RN
- Staphanie E. Sylvain
- MAJ Alex Tatone, MBA, MHA
- MSG David A. Tenorio
- Susan Whitmer
- Bilal Yehia



## Thank You to ACHE of Georgia's 2024 Sponsors

### Platinum Sponsors



### Gold Sponsors

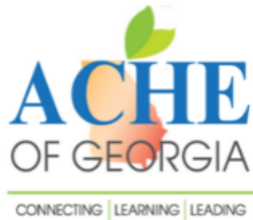


### Silver Sponsors



### Find Out More About ACHE of Georgia Sponsorship

If your organization is interested in becoming an ACHE of Georgia sponsor, visit our sponsorship page at <https://acheofgeorgia.org/sponsors/>



## **ACHE of Georgia Social Media: Connect with the Georgia Healthcare Community!**

ACHE of Georgia offers several ways to connect with your healthcare colleagues through social media. Options include LinkedIn, Facebook, Instagram and X/Twitter. To join any of our social media groups, scan the QR code or visit **[www.acheofgeorgia.org/social](http://www.acheofgeorgia.org/social)**.



### **CALL FOR CONTENT**

Content submissions to the ACHE of Georgia newsletter are for reviewed for appropriateness by the Communications Committee. Please send your contributions, including articles, news, member accomplishments and photos to [bruce.lloyd@gmail.com](mailto:bruce.lloyd@gmail.com), no later than close of business by the 20th day of the last month of each quarter (March, June, September, December). Approved submissions made after this date will be placed into the next newsletter.

Please note that ACHE of Georgia reserves the right to reject submissions that are not consistent with the goals and purposes of the organization. Articles that endorse or appear to endorse specific products, businesses, services, and are self-promotional or advertorial will not be accepted. Subjects that are appropriate deal with healthcare industry news (national and local), career management, leadership, mentoring, diversity and other professional topics. If you are not sure, please ask.

Articles submitted for the newsletter must be relevant to professional development or healthcare administration. Please format content in a Microsoft Word document, left justified, and be 1-2 pages in length. The content of the article must include: title; name of the author; the source the article was obtained from; full URL that links to the article (if applicable). Please submit photographs as email attachments in JPG file format. Please do not embed photographs in your article text. Provide name and affiliation of any person shown in photographs along with a brief caption. When using a reprint article, please provide credit to the author and/or obtain permission to use the article before submission.

ACHE of Georgia reserves the right to edit, change or omit certain content (including photographs) because of length, style, relevance, or simply due to lack of space as deemed appropriate.