

Life's Perspectives

Frederick B. Brown, M.D.

San Antonio, Texas

July 14, 2024



210-370-3939 awccenters.com

free on-board
pregnancy tests
sonograms and
std testing

 **AWC**centers
Acceptance • Wellness • Care

NOAH









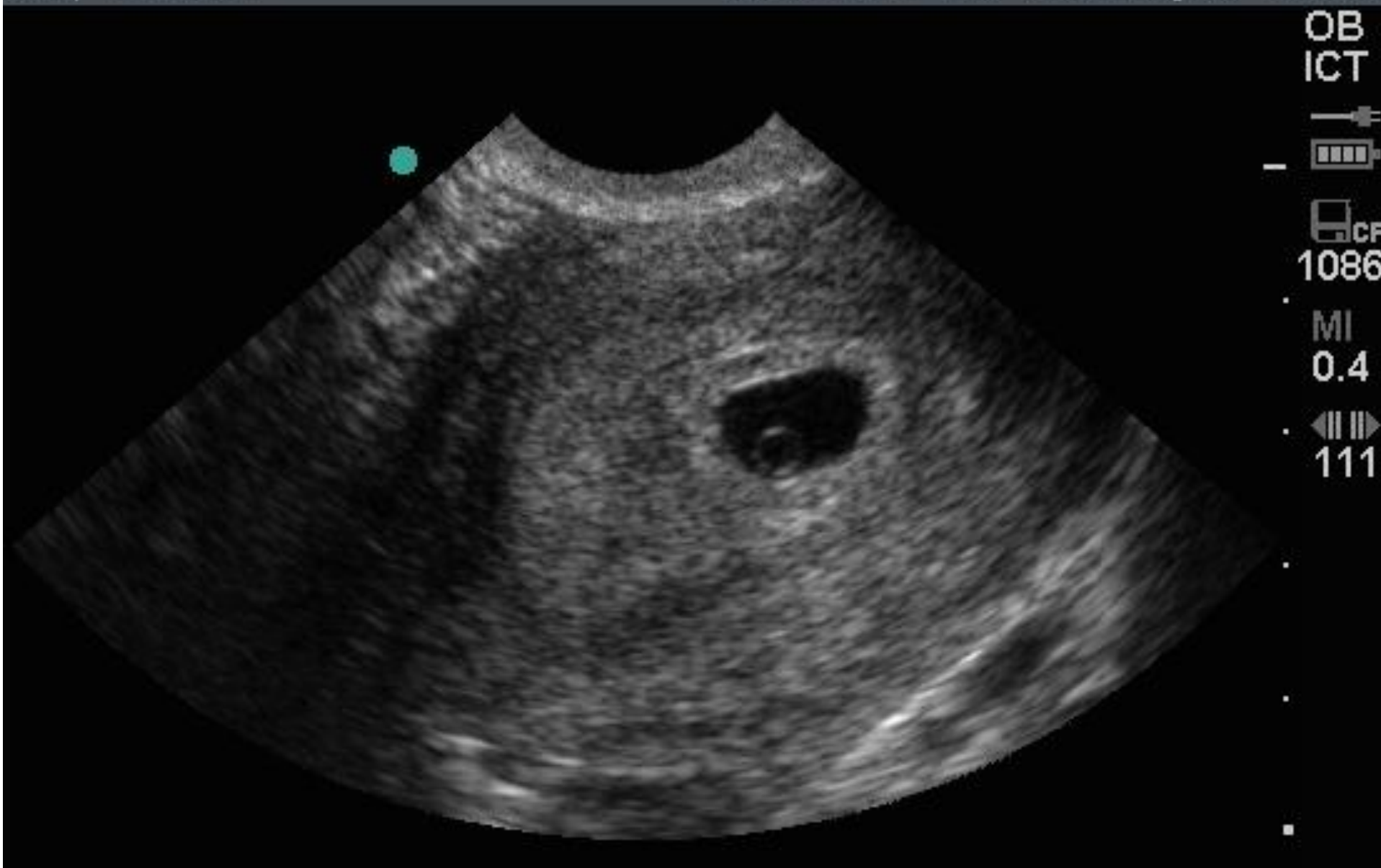




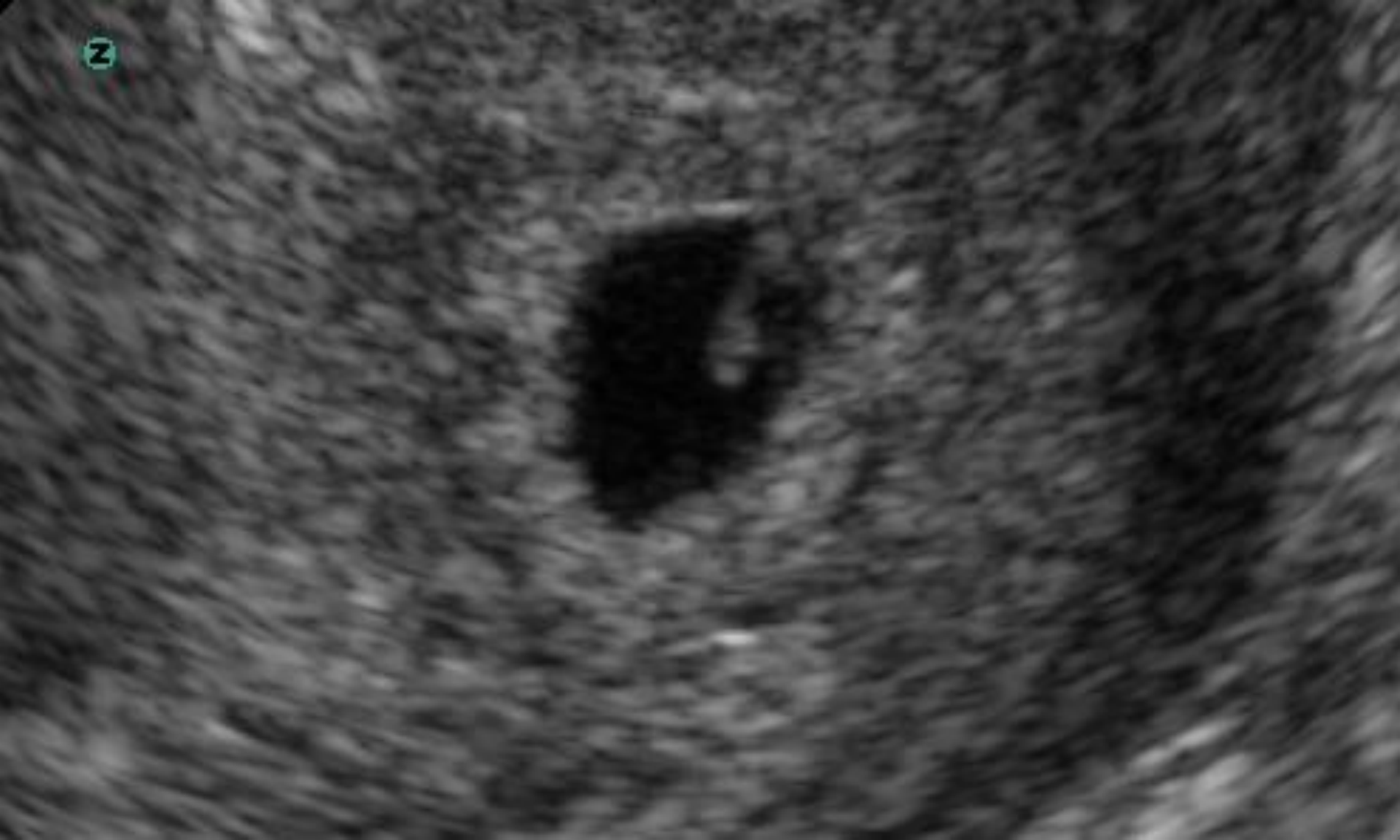
Normal non-pregnant endometrial lining



Four week gestation not visible on ultrasound



Five Week Gestation 5 mm yolk sac



6 week gestation 4 mm active heart beat!



7 week gestation 1 cm



8 week gestation 2 cm



9 week gestation 3 cm



9 week gestation



12 week gestation 6 cm

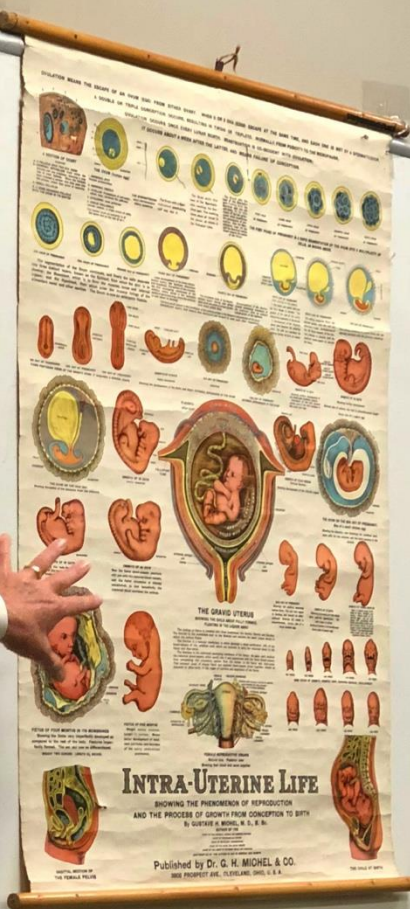
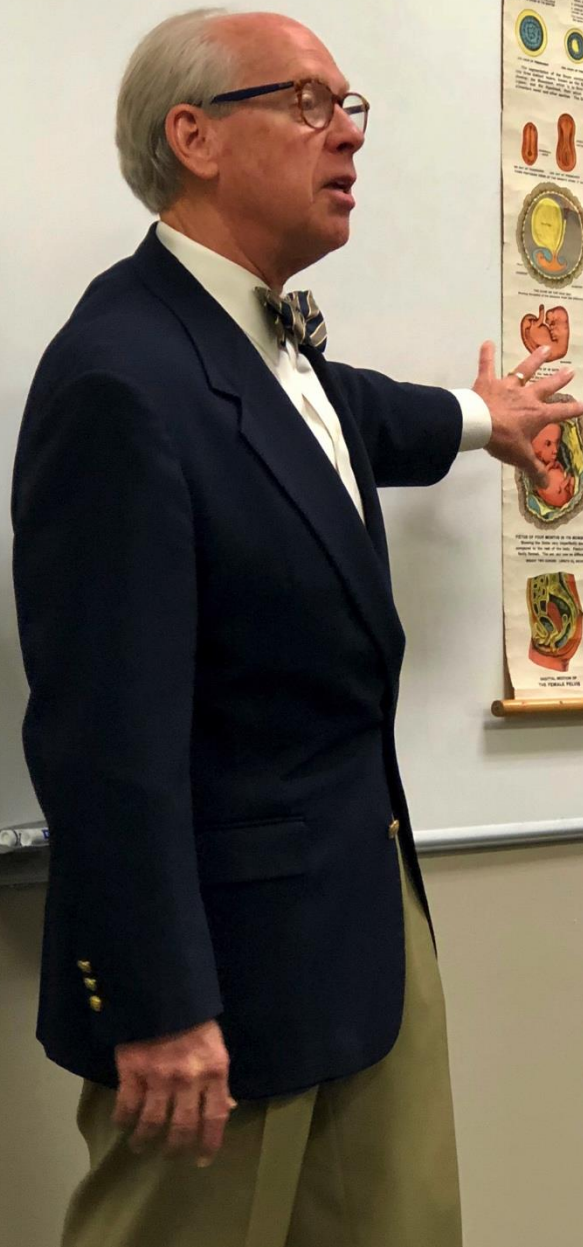


Perspectives of a Christian Obstetrician Gynecologist

Frederick B. Brown, M.D.
San Antonio, Texas
September 11, 2018

Perspectives of a Christian
Obstetrician Gynecologist
Frederick B. Brown, M.D.
San Antonio, Texas
September 11, 2018



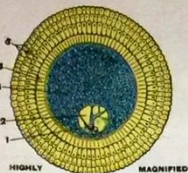


OVULATION MEANS THE ESCAPE OF AN OVUM (EGG) FROM EITHER OVARY. WHEN 2 OR 3 OVA (EGGS) ESCAPE AT THE SAME TIME, AND EACH ONE IS MET BY A SPERMATOZOON, A DOUBLE OR TRIPLE CONCEPTION OCCURS, RESULTING IN TWINS OR TRIPLETS. NORMALLY, FROM PUBERTY TO THE MENOPAUSE, OVULATION OCCURS ONCE EVERY LUNAR MONTH. MENSTRUATION IS CO-INCIDENT WITH OVULATION; IT OCCURS ABOUT A WEEK AFTER THE LATTER, AND MEANS FAILURE OF CONCEPTION.



A SECTION OF OVARY

- A-A FOLLICLE WITH TWO OVA (EGGS)
B-GERMINAL EPITHELIUM from which the follicles and ova originate, showing a long row of small follicles. When the follicles have attained a certain size they pass into the stroma, where they grow to maturity.
C-SMALL FOLLICLES
D-A MORE ADVANCED FOLLICLE WITH THE OVUM IN ITS CENTER

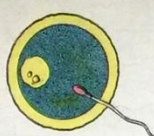


THE OVUM (human egg)

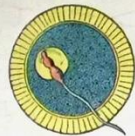
- 1-GERMINAL SPOT (Female pronucleus)
2-GERMINAL VESICLE
3-VITELLUS (Protoplasm of cell-body, which, later, becomes the yolk-sac.
4-OVULEMMA (zona pellucida)
5-DISCUS PROLIGERUS (corona radiata), a triple crown of cells. The human ovum at maturity is of the same size as the dot of an i.



THE SPERMATOZOON
MALE PROTONUCLEUS: HIGHLY MAGNIFIED



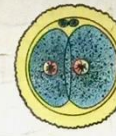
The Ovum with a Spermatozoon penetrating half way into it



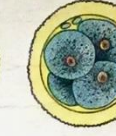
The Ovum with the head of the Spermatozoon reaching the Germinal spot. The meeting takes place at times in the uterus, at others in the Fallopian tube.



The Ovum with the head of the Spermatozoon fusing with the Germinal spot into one cell-body. It is this fusion of the two pronuclei which constitutes the phenomenon of conception. Now the Spermatozoon loses its tail and the Germinal vesicle draws toward the center of the Ovum.



FIRST HOUR OF PREGNANCY



THIRD HOUR OF PREGNANCY



FIFTH HOUR OF PREGNANCY



SEVENTH HOUR OF PREGNANCY



NINTH HOUR OF PREGNANCY

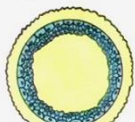
THE FIRST PHASE OF PREGNANCY IS A RAPID SEGMENTATION OF THE OVUM INTO A MULTIPLICITY OF CELLS, AS SHOWN ABOVE.



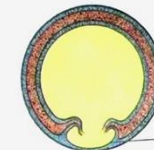
12TH HOUR OF PREGNANCY



18TH HOUR OF PREGNANCY



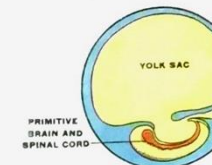
SECOND DAY OF PREGNANCY



THIRD DAY OF PREGNANCY

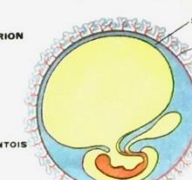


FOURTH DAY OF PREGNANCY



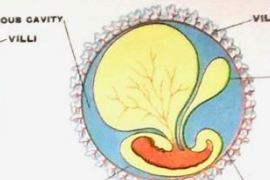
SIXTH DAY OF PREGNANCY
FIRST VESTIGE OF THE EMBRYO.

1. The brain and spinal cord are the first things to develop. The growth of the rest of the body follows the expansion of the nerves.
2. Development of the Allantois, which later becomes the umbilical cord. The yolk sac nourishes the embryo during the first six weeks.



EIGHTH DAY OF PREGNANCY.

The embryo acquires form; the allantois grows, and the yolk-sac diminishes in size. Development of the villi (blood-vessels) of the Chorion, destined to connect with the maternal blood-vessels to nourish the fetus.



12TH DAY OF PREGNANCY

The embryo continues to acquire form, and the allantois connects with the primitive umbilical

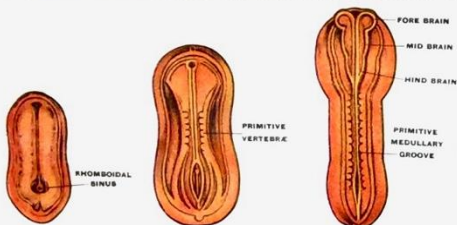
The segmentation of the Ovum continues, and finally the cells separate into three distinct layers, known as the Epiblast, from which the skin is to develop; the Mesoblast, which is to form the muscles, bones and internal organs; and the Hypoblast, from which arise the mucous linings of the alimentary canal and other cavities. The Ovum is now an embryonic Vesicle.

Later development of the three blastodermic layers, the Epiblast, Mesoblast and Hypoblast. Formation of the Amnion, the first enveloping membrane of the embryo, within which is the amniotic cavity or germinal area, where the embryo is now about to develop.

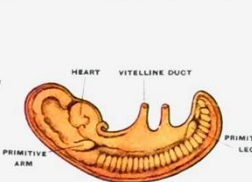
The bi-lateral folds of the blastodermic layers having now joined each other, the embryo proper grows from these united folds.

Development of the Chorion, second enveloping membrane of the embryo from an outward reduplication of the Epiblast.

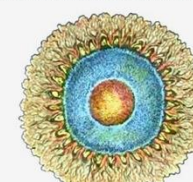
The first act of nature in the formation of the embryo proper is the bilateral reduplication of the three blastodermic layers, first inward, then downward and forward to meet each other respectively.



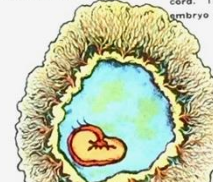
8TH DAY OF PREGNANCY 10TH DAY OF PREGNANCY 12TH DAY OF PREGNANCY
THREE POSTERIOR VIEWS OF THE EMBRYO WHEN IT ACQUIRES A SANDAL SHAPE



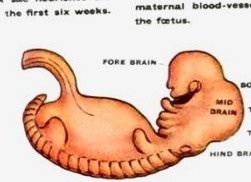
EMBRYO OF 14 DAYS
HIGHLY MAGNIFIED



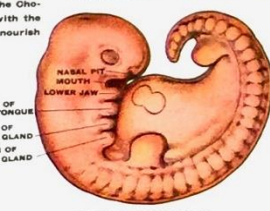
15TH DAY OF PREGNANCY
MAGNIFIED



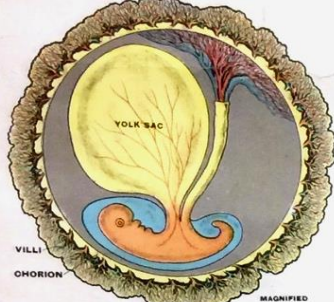
15TH DAY OF PREGNANCY
INTERNAL APPEARANCE OF THE OVUM



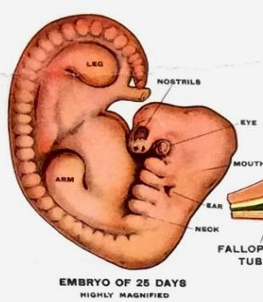
EMBRYO OF 18 DAYS
Showing further development of the Brain and vertebral column. Formation of the five visceral arches and of the first vestiges of the arms and legs.



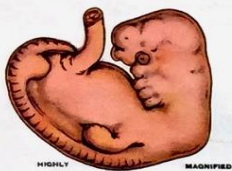
EMBRYO OF 20 DAYS
Showing further development
Natural size of embryo one inch in circumferential length
Ovum size of a pigeon egg



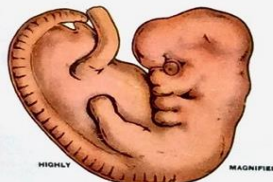
THE OVUM ON THE 22nd DAY
Showing formation of the placenta from the allantois



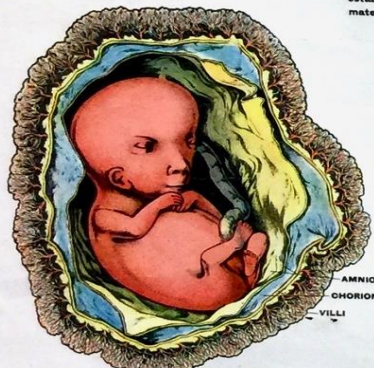
EMBRYO OF 25 DAYS
HIGHLY MAGNIFIED



EMBRYO OF 35 DAYS
Showing the web-like appearance of the hands. Embryo, two inches in circumference.



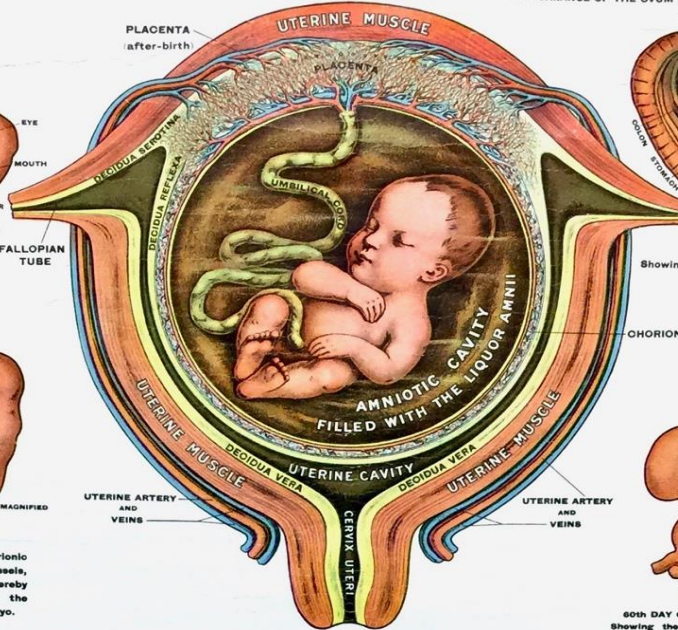
EMBRYO OF 40 DAYS
Now the fetal blood-vessels (chorionic villi) join with the maternal blood-vessels, and the fetal circulation is thereby established, so that henceforth, the maternal blood nourishes the embryo.



FETUS OF FOUR MONTHS IN ITS MEMBRANES
Showing the limbs very imperfectly developed as compared to the rest of the body. Features imperfectly formed. The sex can now be differentiated. WEIGHT TWO OUNCES. LENGTH $\frac{6}{16}$ INCHES.

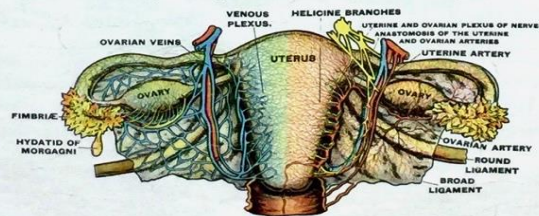


FETUS OF FIVE MONTHS
Weight seven ounces. Length 11 inches. Shows better development of head, neck and limbs, and decrease of the early abdominal prominence.

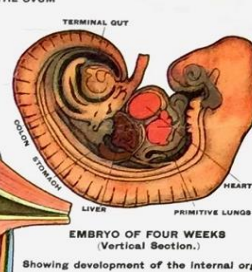


THE GRAVID UTERUS SHOWING THE CHILD ABOUT FULLY FORMED, FLOATING IN THE LIQUOR AMNII

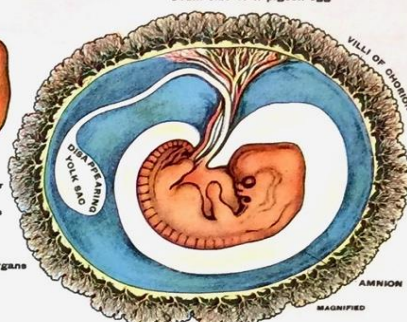
The embryo or fetus is invested with three membranes—the Amnion, Chorion and Decidua. The Amnion is the membrane next to the Embryo, and contains the water (Liquor Amnii) in which the embryo floats. The Chorion is a vascular membrane in which develops a dense ramification (villi) of the blood-vessels of the umbilical cord, which are destined to carry the maternal blood to the fetus and vice-versa. The Decidua is the outermost enveloping membrane of the fetus. Its upper part receives the maternal blood-vessels, which ramify into it and anastomose with the fetal blood-vessels, thus completing the circulatory system from the mother to the fetus and vice-versa. That compact mass of minute fetal and maternal blood-vessels joined together, known as placenta or after-birth, is the organ of nutrition and respiration of the fetus.



FEMALE REPRODUCTIVE ORGANS
Natural size. Posterior view
Showing their blood and nerve supplies



EMBRYO OF FOUR WEEKS
(Vertical Section.)
Showing development of the internal organs



THE OVUM ON THE 30th DAY OF PREGNANCY,
Size of a small chicken egg.
Showing the allantois, now becoming the umbilical cord, open, with its two arteries and two veins passing to the chorion.



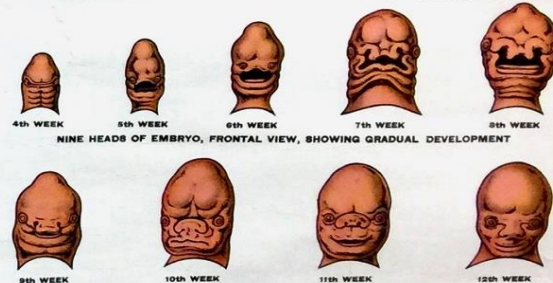
60th DAY OF PREGNANCY
Showing the embryo assuming human form. The sex now begins to develop, but cannot be differentiated. Embryo, $\frac{3}{16}$ inches in circumference. Ovum, size of a large chicken egg.



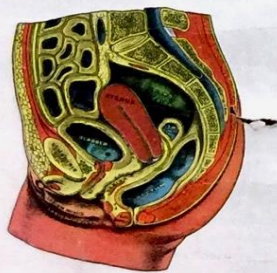
EMBRYO OF 75 DAYS
Showing the hands and feet losing their web-like appearance. The nails begin to grow. Embryo 5 inches in circumference. Ovum size of goose egg.



EMBRYO OF THREE MONTHS
Size 4 inches long from head to foot. Weight one ounce. Ovum size of an ostrich egg. At this stage, the growing little being assumes a more perfect human form. It is no longer called an "ovum" or "fetus." The head becomes more erect and the neck acquires better form.



NINE HEADS OF EMBRYO, FRONTAL VIEW, SHOWING GRADUAL DEVELOPMENT



SAGITTAL SECTION OF
THE FEMALE PELVIS



THE CHILD AT BIRTH

INTRA-UTERINE LIFE

SHOWING THE PHENOMENON OF REPRODUCTION
AND THE PROCESS OF GROWTH FROM CONCEPTION TO BIRTH

By GUSTAVE H. MICHEL, M. D., B. Sc.

AUTHOR OF THE

CHART OF THE ARTERIAL, VENOUS AND NERVOUS SYSTEMS

CHART OF THE MUSCULAR SYSTEM

CHART OF ORTHOGONY, RADIOGRAPHY

CHART OF THE SPINE AND SPINAL NERVES

CHART OF THE HEART IN ITS EVERY DETAIL, AND POSITION

COPYRIGHTED BY THE AUTHOR IN 1916 IN AMERICA AND EUROPE

Published by Dr. G. H. MICHEL & CO.
3808 PROSPECT AVE., CLEVELAND, OHIO, U. S. A.

THE PHENOMENON OF REPRODUCTION FROM CONCEIVED

By GUSTAVE H. MICHEL, M. D., B. Sc.

AUTHOR OF THE

CHART OF THE ARTERIAL, VENOUS AND NERVOUS SYSTEMS

CHART OF THE MUSCULAR SYSTEM

CHART OF OSTEOLOGY (RADIOGRAPHIC)

CHART OF THE SPINE AND SPINAL NERVES

CHART OF THE HEART IN ITS EVERY DETAIL AND FUNCTION

COPYRIGHTED BY THE AUTHOR IN 1918 IN AMERICA AND EUROPE

Published by Dr. G. H. MICHEL

PROSPECT AVE., CLEVELAND, OHIO, U. S. A.



FINAL

DAILY NEWS

NEW YORK'S PICTURE NEWSPAPER

10¢

LBJ DEAD

*Former President, 64, Suffers
Heart Attack at Texas Ranch*



LYNDON BAINES JOHNSON, 64-TH
Saves Pages of Stories and Photos Begins on Page 2

Life's Perspectives

Frederick B. Brown, M.D.

San Antonio, Texas

July 14, 2024