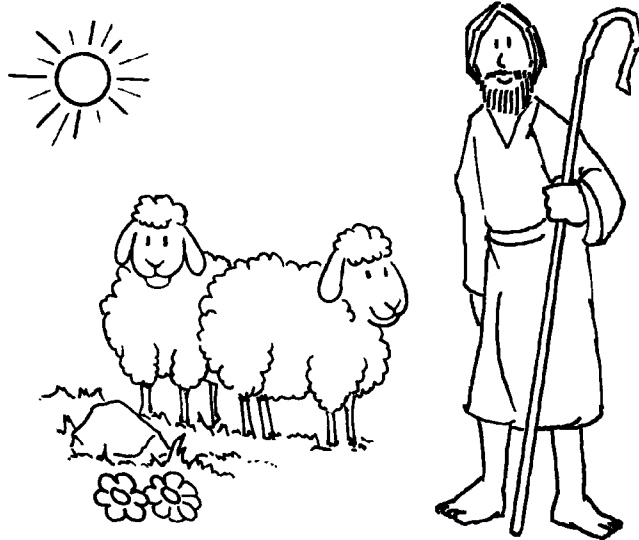
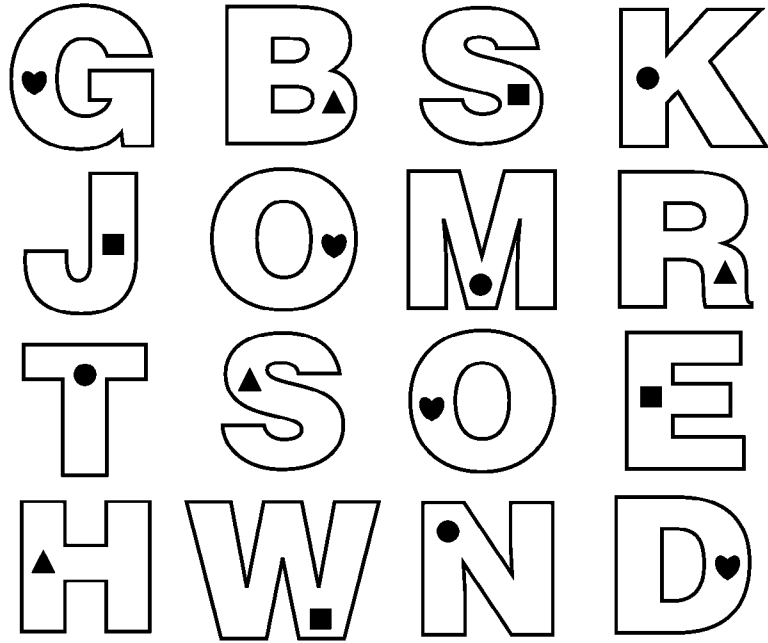


# What kind of Shepherd is Jesus?

Shade in the letters that have a ♥.

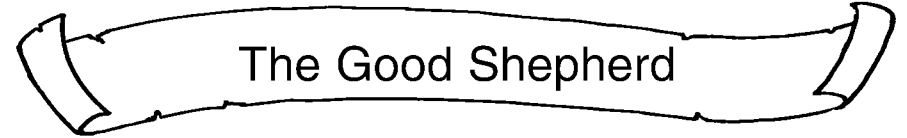


# Children's Worship Bulletin™



Ages 3+

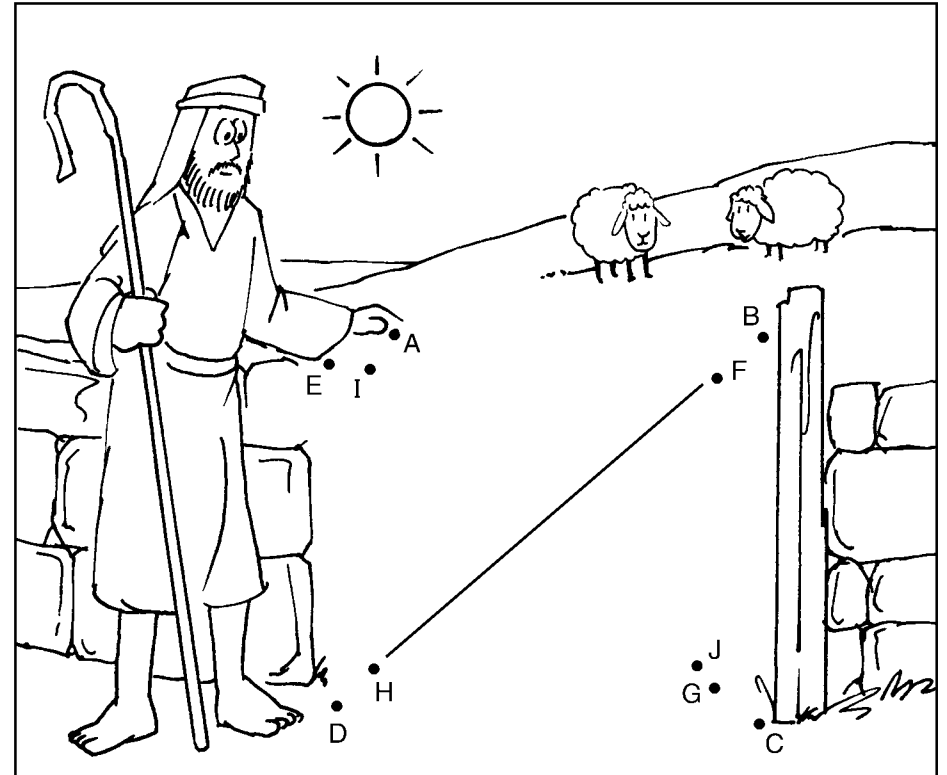
April 26, 2026 • John 10:1-10



## The Good Shepherd

The shepherd enters by the gate.

Connect the dots: A B C D E F G H I J

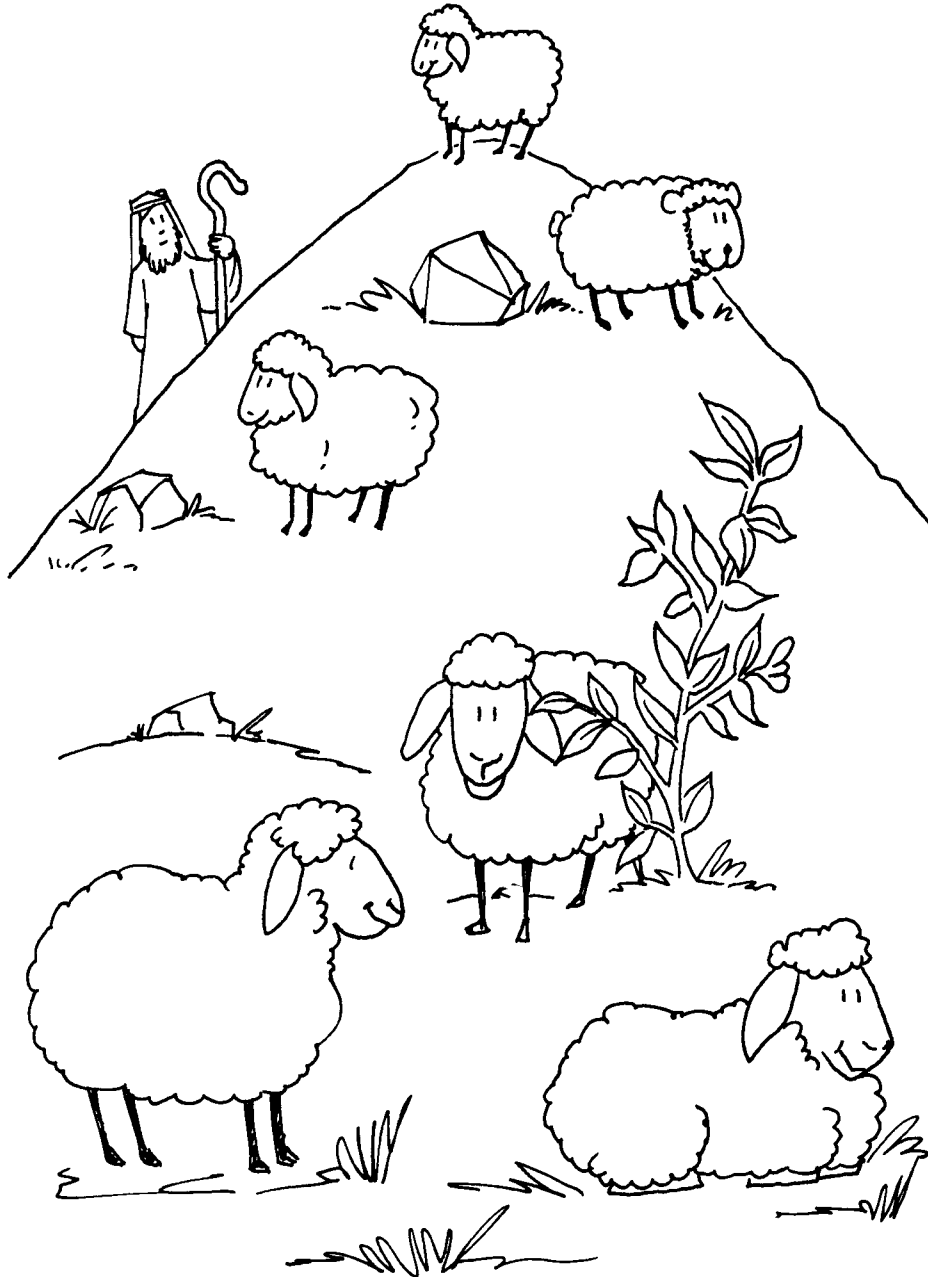


Enter your **SECRET CODE** to unlock games @ [games.childrensbulletins.com](http://games.childrensbulletins.com)

**SECRET CODE**  
**RPJB21**

The sheep listen to the shepherd.

Count how many sheep. 6 or 7 ?



The shepherd knows each sheep by name.

Circle the matching sheep in each row.

