

At St. Charles, all are invited to
meet Christ, know Christ,
love Christ and serve Christ.

March 22, 2026
FIFTH SUNDAY OF LENT



Oliver Ross L.
Son of Luke & Melissa L.



Ella Marie M.
Daughter of Michael & Jacquelyn M.



George Leopold G.
Son of Justin & Madison G.



Audrey Ann & Connor Alan V.
Children of Cody & Allison V.

Celebrating the
Sacrament of Baptism

Congratulations to our newest members and their families!



WELCOME TO ST. CHARLES - WE ARE HERE FOR YOU



PASTOR
Fr. Ken Omernick



ASSOCIATE PASTOR
Fr. Aaron Siehr

ST. CHARLES STAFF TEAMS

CONTACT PASTOR THROUGH ASSISTANT:

Terrie Carew, Ext. 224, tcarew@stcharleshartland.org
ASSOCIATE PASTOR:

Fr. Aaron Siehr, asiehr@stcharleshartland.org

TEACHING PARISH SEMINARIANS:

Timothy Heyrman, theyrman@sfs.edu

SCHOOL TEAM 262-367-2040

Principal/School Team Lead: Dan Garvey, Ext. 208,
dgarvey@stcharleshartland.org

School Administrative: Lisa Moehrke, Ext. 207,
school@stcharleshartland.org

School Administrative: Karen Dejewski, Ext. 206,
kdejewski@stcharleshartland.org

School Administrative: Nina Wolf, Ext. 218,
nwolf@stcharleshartland.org

School Administrative: Cindy Hinca, Ext. 218,
chinca@stcharleshartland.org

WORSHIP TEAM

Director of Worship: Peg Kasun, Ext. 225,
pkasun@stcharleshartland.org

Director of Music: Dr. Aaron Mathews, Ext. 229,
amathews@stcharleshartland.org

Director of Liturgy: Elizabeth Thompson, M.Div.,
262-367-6704 ethompson@stcharleshartland.org

Worship Associate/ Baptism Coordinator: Jacqueline Bernard,
Ext. 205 jbernard@stcharleshartland.org

Wedding Coordinator: Dee Anne Hamer, Ext. 219,
dhamer@stcharleshartland.org

DISCIPLESHIP TEAM

Director of Student Discipleship: Tiffany Topel, Ext. 209
ttopel@stcharleshartland.org

Director of Evangelization: Valerie Winkel, Ext. 220,
vwinkel@stcharleshartland.org

Children's Discipleship Lead: Shelly Buchan, Ext. 221,
sbuchan@stcharleshartland.org

Student Discipleship Coordinator: Caroline Coiner, Ext. 209,
ccoiner@stcharleshartland.org

Catechesis of the Good Shepherd Staff: Sharon Tobolski,
Ext. 221, stobolski@stcharleshartland.org

Catechesis of the Good Shepherd Staff: Erika Wood,
Ext. 221, ewood@stcharleshartland.org

OPERATIONS TEAM

Director of Finance & Human Resources: Celia Meyers,
Ext. 216, cmeyers@stcharleshartland.org

Director of Operations: Mike Cattani, Ext. 201,
mcattani@stcharleshartland.org

Maintenance Manager: Tim Orzechowski, Ext. 217,
torzechowski@stcharleshartland.org

Accounting: Dee Anne Hamer, Ext. 219,
dhamer@stcharleshartland.org

Phase III Cornerstone: Brenda Zingsheim, Ext. 231,
bzingsheim@stcharleshartland.org

Safeguarding: Karen Dejewski, Ext. 206,
kdejewski@stcharleshartland.org

COMMUNICATIONS & STEWARDSHIP TEAM

Director of Communications & Stewardship: Allison Caswell,
Ext. 202, acaswell@stcharleshartland.org

Assistant to the Pastor: Terrie Carew, Ext. 224,
tcarew@stcharleshartland.org

Communications & Stewardship Coordinator: Lucca Kenyon,
Ext. 210, lkenyon@stcharleshartland.org

Administrative: Kathy Gillstrom, Ext. 200,
kgillstrom@stcharleshartland.org

Administrative/Hospitality Lead: Mary Jo Romportl, Ext. 212,
mjromportl@stcharleshartland.org

PARISH OFFICE: 262-367-0800,
Mon. - Fri., 8 am - 4 pm
EMAIL US: parish@stcharleshartland.org

PARISH SCHOOL: 262-367-2040
school@stcharleshartland.org



WEBSITE: www.stcharleshartland.org
LIVESTREAM: Scan QR code
with phone camera

WELCOME TO ST. CHARLES - WE ARE HERE FOR YOU

SATURDAY VIGIL MASS: 5:00pm

SUNDAY MASS TIMES: 7:00am, 9:00am, 11:00am & 6:00pm

DAILY MASS: Monday - Saturday: 8:30am

EUCCHARISTIC ADORATION

We offer Adoration from Mondays at 5:00 a.m. through Saturday mornings at 10:00 a.m.

For current openings, please see our website.



RECONCILIATION

Saturdays: 9:30am - 10:30am (two Priests)

Thursdays: 5:00pm - 6:00pm (one Priest)

Please arrive within 30 minutes of the start time.

SACRAMENT OF THE SICK/ ANOINTING MASSES

Sacrament of the Sick Masses are the 2nd and 4th FRIDAYS of every month or by appointment with Fr. Ken or Fr. Aaron (call the Parish Office).

BAPTISMS

If you are inquiring about having your child baptized, please call 262-367-0800 ext. 205 or email baptisms@stcharleshartland.org.

OUTREACH SERVICES

Contact the Parish Office at 262-367-0800.

TO ASK FOR PRAYERS or to be added to the email list, please email: prayernetwork@stcharleshartland.org

FOR EMERGENCY PRAYERS, please email: emergencyprayers@stcharleshartland.org

Printed weekly prayer sheets are available on the information wall.

ST. VINCENT DE PAUL: if you need food, shelter or assistance call 262-367-0800 (Parish Office)

NEED HOME COMMUNION:

For information call 262-367-0800 (Parish Office)

Mass Intentions for the Week of March 22



Sunday, March 22

- 7:00 am † Laura Siedschlag
- 9:00 am † Kathy Wilson
- 11:00 am † Living & Deceased Members of St. Charles
- 6:00 pm † Kelly Kruger

Monday, March 23

- 6:30 am † Fr. Michael Strachota
- 8:30 am † Patricia Herning

Tuesday, March 24

- 6:30 am † Fr. Robert Skeris
- 8:30 am † Living & Deceased Members of the Jack & Haley Demski Family

Wednesday, March 25

- 6:30 am † Living & Deceased Members of the Thomas & Lorenz Families
- 8:30 am † Arlene Condon

Thursday, March 26

- 6:30 am † Ed & Sandy Cibula
- 8:30 am † Bill Ring

Friday, March 27

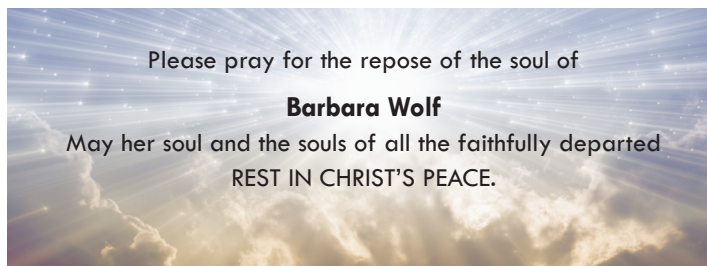
- 6:30 am † Clare Leaman
- 8:30 am † Mary Pat Wach

Saturday, March 28

- 8:30 am † Rita Wengel
- 5:00 pm † Jerry O'Leary

Sunday, March 29

- 7:00 am † Albert Oskey
- 9:00 am † Pete Schneider
- 11:00 am † Paul Piotrowski
- 6:00 pm † Living & Deceased Members of St. Charles



One of the easiest ways to support St. Charles Parish and School is through the secured online e-giving system.



PARISH SUPPORT
THRU FEBRUARY 22

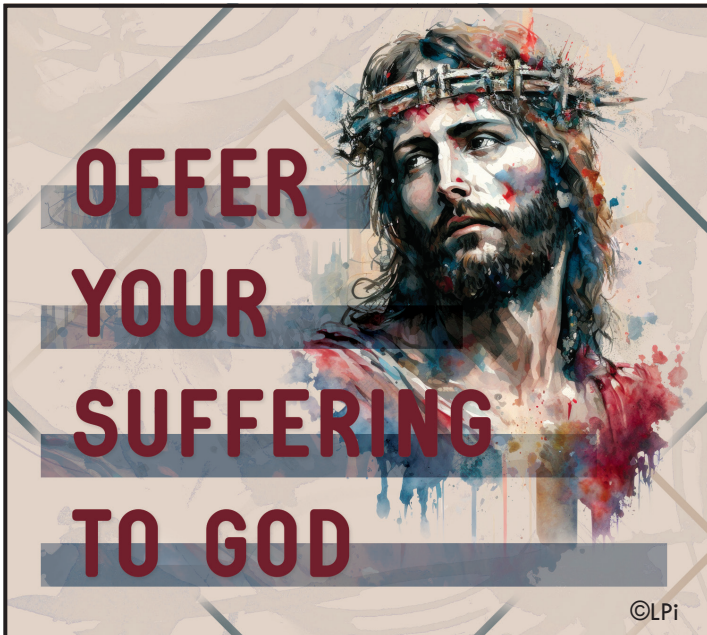
FISCAL YEAR
JULY 1 THRU JUNE 30

2025-2026

Envelopes.....	\$21,006.50
Offertory.....	\$3,929.77
Weekend Total	\$24,936.27
E-Giving	\$17,889.40
YTD	\$2,023,846.64

2024-2025

Envelopes.....	\$43,642.33
Offertory.....	\$3,400.51
Weekend Total	\$57,042.84
E-Giving	\$12,934.50
YTD	\$1,874,164.86



©LPi

THIS WEEKEND'S GOSPEL MEDITATION

John 11:1-45

A friend of mine wrote an imaginative reflection on the raising of Lazarus that caught me off guard. She proposed that when Jesus called Lazarus from the tomb, the man was not joyful but angry and annoyed. After so much suffering, maybe death felt like a release. He had finally escaped the pain. And then, suddenly, Jesus' voice cuts through the silence: "Lazarus, come out!" (John 11:43). The light stings his eyes. The pain returns. And now he is dragged back into a world that had broken him.

It startled me at first, but the more I sat with it, the more it made sense. Sometimes, people do not want to be raised. Not at first. Think of those in the grip of addiction, despair, or numbness. The tomb can feel safer than the risk of living again. Yet Jesus, moved by the grief and faith of others (Martha, Mary, the community), calls the dead man out. Lazarus obeys. But he is still bound, head to foot. Jesus says to the bystanders, "Untie him and let him go" (John 11:44).

That is often how healing happens: slowly, reluctantly. Not just by a personal decision but through the love and persistence of others. Resurrection is not always euphoric. It may begin in protest and confusion and only later turn to gratitude and freedom. But Christ's voice breaks through anyway.

Lenten challenge: Who in your life needs to be called back to life? Pray for them. If that person is you, listen for the voice. It is calling even now.

— Father John Muir

©LPi

PRAY WITH SCRIPTURE

Lectio Divina

15 minutes each day spent in God's presence – reading, reflecting, responding and resting with his Word – adds up to 90 hours in one year. That is time well spent and a testimony to how a little at a time turns into something remarkable!

Sunday, March 29th Readings

Mt 21:1-11 (37)/Ps 22:8-9, 17-18, 19-20, 23-24/Is 50:4-7/Phil 2:6-11/Mt 26:14-27:66 or 27:11-54

To find readings for the weekdays and/or Feast Days, please visit <https://bible.usccb.org/bible/readings>.

Reflection questions for Sunday, March 29th

- Isaiah speaks of his obedient response to God's call despite his suffering. Have you ever suffered for your faith?
- Paul recounts how Jesus' life was characterized by humility and obedience. In what ways do you live by these virtues?
- There are numerous unique features to Matthew's account of the passion of the Lord, including the details of Judas' suicide. What parts of the passion narrative do you find most engaging?



READ. REFLECT. RESPOND. REST.

Cut out and keep in your Bible for reference!



EASTER MASS TIMES

EASTER VIGIL ON APRIL 4

8pm (with incense)

EASTER SUNDAY ON APRIL 5

7am

9am (with incense)

11am (with incense)



FELLOWSHIP WEEKEND RETURNS

The Hospitality Team invites you to share a new menu of food and beverages after Masses this weekend!

How about pizza after 5pm and 6pm Masses? Breakfast items on Sunday morning will include donuts as well as other offerings. We hope to see you there!

WOMEN'S STATIONS OF THE CROSS

We invite you to join us at 10:30am on Thursday, March 26 in the church.

Hosted by our Women's Ministry, we will reflect on the Stations of the Cross through the lens of Mary, Our Mother.

We hope you prayerfully consider attending this beautiful prayer invitation.



LAKE COUNTRY LIFE TEEN

BOYS FOOTBALL GAME

All High School boys are invited to join Seminarian Tim for a football game on Sunday, April 12th after the 11 a.m. Mass!



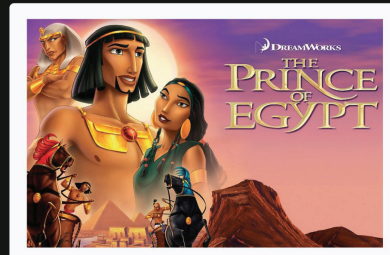
Scan the QR Code to sign up!

Contact Caroline (ccoiner@stcharleshartland.org) for more information



LAKE COUNTRY LIFE TEEN

HIGH SCHOOL MOVIE NIGHT



All 9th - 12th grade high school students are invited to join us for a Faith in Film Movie Night on Saturday, March 28th 6-8:45 pm!

Enjoy pizza, snacks, and a showing *The Prince of Egypt!*



Contact Caroline (ccoiner@stcharleshartland.org) for more information



GARDEN CLUB LUNCHEON

Saturday, April 18 | Doors open at 10am
Borromeo Hall

We're excited to welcome Melissa Harwick, founder of At Home Organics, as our featured speaker! Melissa will share her passion for natural gardening in Wisconsin, with a special focus on growing beautiful flowers using healthy, sustainable practices.

Whether you're a seasoned gardener or just starting out, you'll walk away with tips you can use right in your own garden!

Guests will also enjoy delicious salads and desserts during the event.

The cost is \$28 for pre-registration or \$30 at the door. Please register by scanning the QR code to access the form.



2027 MASS INTENTION BOOK

The 2027 Mass Intention Book is now open.

Here at St. Charles, a Mass Intention for deceased persons can be reserved through the Parish Office. They are available for all weekend and daily Masses for an offering of \$20.00.

For more information, contact the Parish Office at 262-367-0800, extension 200.

PARISH NEWS

STATIONS OF THE CROSS

The Stations of the Cross will be prayed every Friday at 7pm in the church until Friday, April 3. We invite you to join us as we prepare our hearts for Jesus' Passion, Death, and Resurrection.



Grieving with Great HOPE

FIVE-WEEK GRIEF SUPPORT WORKSHOP AT ST. CHARLES

April 18, 2026 - May 16, 2026

Saturdays, 9:30 - 11:30 am in the Life Teen Cafe



Grieving with Great HOPE is a five-week grief support workshop using a video on-demand format offered by St. Charles Bereavement Ministry. It offers a prayerful, practical and personal approach for anyone who is mourning the loss of a loved one.

If you would like to register for the workshop, visit the parish website to find the online form or scan the QR code. For more information or questions, please contact Dianne Merkel at diannemerkel@gmail.com or 414-322-1309.

NEW HEIGHTS SMALL GROUP SUMMIT

May 9, 2026 9AM - 5PM MASS

Topics include an immersive prayer experience, the mission of the Church, how disciples are made, walking with people on their journey of faith and yours, and more! Sessions are intentionally built to foster personal spiritual growth and discipleship for our daily lives, not just in a small group. Register today to grow in community and faith together!

Contact Valerie Winkel for more information.

262.367.0800 ext. 220

vwinkel@stcharleshartland.org

Registration deadline is April 26th.

Please scan the QR code to register.



KEYNOTE SPEAKERS



KRISTIN BIRD

Burning Hearts Disciples



AJ GARCIA

FOCUS

Featuring music with Nick Scanlan.

ADORATION OPENINGS

Mondays: 8am

Tuesdays: 1 am, 2am, 11 pm

Wednesdays: 10pm, 11 pm

Thursdays: Noon, 8pm, 11 pm

Fridays: Midnight, 2am, 1pm, 5pm, 7pm, 10pm

Saturdays: Midnight, 1 am, 2am, 3am

Please see our website to sign up.



FLOWERS FOR THE CHURCH

The beautiful decorations in our Church during the Easter season lift our spirits closer to the Lord Jesus as we celebrate His Resurrection. They help us to pray more deeply and feel closer to one another. We invite you to make an offering in memory of a loved one, in thanksgiving for a blessing in your life, for a special intention or simply as a free-will offering. We will list the names of the people remembered, the blessings recalled or the intentions held in your hearts in a **bulletin after Easter**. However, we will not print the donor's name nor the amount given.

If you wish to make this offering, please fill out this form and return it with your donation to the Business Center by Monday, March 30th. You can also mail it to us: 313 Circle Drive, Hartland, WI 53029

Name of Donor _____

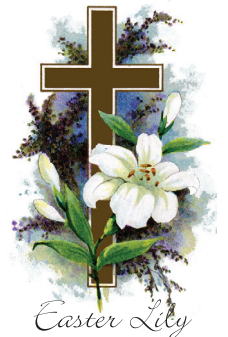
In Memory of those Deceased _____

Blessing Recalled _____

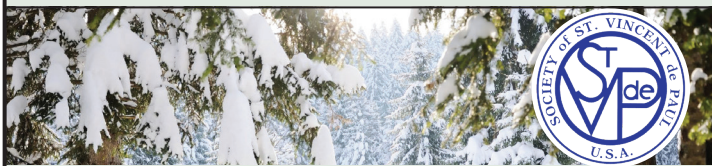
Special Intention _____

Amount Enclosed \$ _____

PLEASE PRINT – THANK YOU



ST. VINCENT de PAUL SOCIETY



FOOD PANTRY NEEDS: Kleenex, Instant Brown Rice, Mandarin Oranges, Shampoo, Kleenex

The Gospel today on the Fifth Sunday of Lent is the story of Lazarus that demonstrates Jesus' authority over life and death and serves as a powerful symbol of faith, hope, and the promise of resurrection for believers. It challenges us to see and believe the signs of grace in our lives: joy, peace, forgiveness, mercy, and kindness.



A special thank you to our local Cub Scouts and Boy Scouts. They received donations from our community for our St. Vincent de Paul Food Pantry.

Is there a family you know who needs assistance? Please contact us at 262-367-0800 so that together we can help the suffering and poor in our community.

The St. Charles SVDP Food Pantry is located on the church grounds at 313 Circle Drive, and it is open Tuesday mornings between 10am and noon. It is also open on the second and fourth Tuesday evenings of the month between 5pm and 6:30pm (new evening times).

The food pantry will be closed when Arrowhead Schools close for inclement weather. It will reopen the following week, weather permitting.



OUTREACH
SERVICES
TEAM



ROSEMARY'S MISSION

Rosemary's Mission, named in memory of Rosemary Becker who was the founder of this ministry, provides meals to homeless shelters. Twice a week we deliver three meal pans to Sentry House, the single men and women's shelter, and once a week two meal pans to Juno House, the family shelter.

We have thirteen cooks who provide the ingredients for the

meals, and each meal is prepared in a 13 x 9 aluminum pan, which is provided by each cook who decides how many pans they will make and what to make, often a recipe their family likes. Cooks sign up for a Monday or Friday date to make a meal on Signup Genius.

We also have five volunteer drivers that deliver the meals plus any additional donated food from the church kitchen. Drivers receive a short training by riding along with a delivery.

We do need more cooks and volunteer drivers. Contact Ann Hansen for more information by email at hansendairy97@gmail.com or 920-763-4773.



BREAD OF LIFE COMMUNITY MEALS

Please join us for our final Bread of Life Community Meal on Thursday, March 26th in the Borromeo Hall. The

meal will be hosted by Valerie Winkel's small group. The menu will be a hot pasta bar with red & white sauce, pulled chicken or meat balls, salad, garlic bread, and assorted desserts. There will be music provided by the "A Little Bit of Heaven" band. We also offer blood pressure readings before the meal.

The meal will begin at 5:30pm. We look forward to seeing you there!



LA SAGRADA FAMILIA REFLECTION

I was very blessed to be able to go the Dominican Republic and visit La Sagrada Familia last November with a group from St. Charles.

While there, we were able to assist at the health center when the seniors got their check-ups and some donated medications. When they left they were given a tooth brush, tooth paste, and a very heavy bag of food that I could barely lift. Most had smiles and seemed very appreciative. We were able to see the new clinic that opened this Spring.

We toured a school and nutritional center for 2-5 year olds. My highlight was bending over to say hello to a little boy and being surrounded by three others for a group hug.

With daily Mass at several different churches (all very simple and beautiful), I was impressed with how much joy and enthusiasm they had with their prayers and music. They were very friendly with greetings, smiles and hugs after Mass.

They live simpler lives with fewer material goods than us. The houses they live in are very small with none of the many conveniences that we have like washers, dryers and air conditioners to name a few. Yet they seem very joyful and grateful.

To see firsthand all that has been done with our support and other parishes was great. Please don't forget these thankful people with your almsgiving this Lent.

-Colleen Stuetgen



Roman Holiday Gala

GALA TIME IS ALMOST HERE!

Don't miss this one-of-a-kind evening creating connections while making a meaningful impact in supporting our Parish and School.

YOUR TICKET: Includes a strolling dinner experience throughout I.D., the Foyer, the Cushing Room, and an outdoor bar with theater-style seating in the Ballroom for a shortened program.



BID FROM ANYWHERE: By scanning the QR code above you are able to bid for auction items without leaving your house! Support our parish and school by bidding on an auction item.

DINE & MINGLE SEATING: Open, shared seating designed for movement and conversation, with high-top tables and 120+ shared seats throughout the space.

FOOD, SHOW & FUN: An engaging program led by Fr. Ken, Mr. Garvey, and Dr. Mathews. Support our leaders, raise funds for our students, and connect with fellow parents and parishioners.

WHAT TO WEAR: Explore the Roman Holiday-inspired style board curated by Kristin Bachman who's ready to help you bring your look together. Contact Kristin at krisbachman333@gmail.com.



Please scan the QR code to sign up for a volunteer task or visit stcharleshartland.org/gala-homepage/ for more information.



SUPPORT OUR GROCERS & HELP ST. CHARLES PARISH

Please save your receipts from Piggly Wiggly in Hartland/Oconomowoc and Sentry in Delafield. St. Charles receives 1% of the receipt totals from these receipts, and only receipts with grocery purchases are valid.

Your receipts do pay off! In 2025, St. Charles received \$1,159.17 from Sentry and \$3,105.83 from Piggly Wiggly!

Please use the drop box located next to the Parish Office to turn them in. **Please include the whole receipt; do not cut the top or bottom off because it makes them invalid.** Do not staple, tape, roll or rubber band them together and keep them flat. Receipts expire within six months, so be sure to turn them in as soon as possible. Thank you for your help!

SAVE THE DATE FOR THE SPRING MUSICAL

April 24 & 25



We look forward to watching our students perform as they have worked so hard! Please check our website for more information coming soon.

BULLETIN DUE DATES!

If you have an event(s) you would like to publicize in the upcoming bulletins, please email your information by 8:00 am on the due dates listed below to lkenyon@stcharleshartland.org.

April 5th bulletin is due Thursday, March 26th
 April 12th bulletin is due Monday, April 6th

BULLETIN ADVERTISERS OF THE WEEK

Please support our advertisers!

hope-iatry™
 Personalized Mental Health Care
 for Children & Adolescents
support@hope-iatry.com
 (262) 303-4017

Maddie Goedken 
 WEDDING
 PHOTOGRAPHER
 Parishioner
maddiegoedkenphoto.com

ST. CHARLES SCHOOL UPDATES

MULTIPLYING THE FUN



Our students had a great time celebrating Math Day as they played games that multiplied the fun! Thank you to our Math Club for planning this fun day!



CHEERING ON OUR ATHLETES



Thank you to our students on the cheerleading team! The energy and joy you bring to the games helps our athletes succeed!

Knights of Columbus Council 3562

2nd Annual KNIGHTS OF COLUMBUS SCHOLARSHIP

OPEN TO 8TH GRADERS!



Are you eligible?

Requirements:

- ✓ You're a current 8th grader
- ✓ Will attend a Catholic high school
- ✓ Current member of one of the six Council 3562 Lake Country parishes

UP TO FOUR
\$1,000
SCHOLARSHIPS
AVAILABLE!

Important Dates

- ✓ Applications will be accepted from February 1st through April 1st, 2026
- ✓ Go to the following website for details, criteria, and application:

kc3562.org/scholarship



Knights of Columbus Council #3562 is offering their 2nd annual 8th Grade Scholarship.

Four \$1,000 scholarships will be awarded to graduating 8th graders who are members of this parish and will be attending a Catholic high school as a freshman in the Fall of 2026.

Details, criteria, and application can be viewed at kc3562.org/scholarship. The application submission website will be open through April 1st.



ST. CHARLES DINING OUT!

Duke's Bar & Grill in Hartland
Wednesday, March 25 - ALL DAY!

Duke's (formerly Endter's) will donate \$5 for every large pizza and \$3 for every small pizza to St. Charles Parish School. Dine in or carry out. Don't forget to buy SCRIP for Duke's! They generously give us a 20% rebate on gift cards.



SCHOOL MISSION STATEMENT

St. Charles Parish School in Hartland, Wisconsin nourishes and grows a vibrant Catholic community committed to innovation, responsiveness and compassion as it prepares and challenges students in their intellectual, spiritual and moral lives.

AROUND THE ARCHDIOCESE

PRESENTATION ON HUMAN TRAFFICKING

Monday, March 23rd at 6:30pm at Queen of Apostles Parish Hall

Human trafficking IS in our backyard. Join us for a presentation on this important topic. FBI agent Amy Mentzel will provide an explanation of human trafficking, recruitment methods, and the roadblocks faced by victims seeking help.

Anne Haines, founder and Executive Director of St. Bakhita Catholic Worker House, will then share how St. Bakhita responds to this issue by providing for the housing and community needs of women survivors of human trafficking in Milwaukee, as well as addressing survivors' trauma and promoting healing. Resources will be shared highlighting red flags to watch for and how to report it if you see something that could be human trafficking.

ONLINE EVENING PRAYER WITH YOUNG ADULTS

Prayer is an integral part of your Lenten journey. Young adults ages 18+ are invited to pray online together with other young adults and School Sisters of Notre Dame from across the U.S. and Canada on Tuesday, March 24 at 7 p.m. CT.

Learn more and register for the Zoom link at ssnd.org/events/3-24-26/.



ARCHDIOCESE OF MILWAUKEE Day of Reconciliation

Please mark your calendars for March 25!

Scan the QR code for more information.



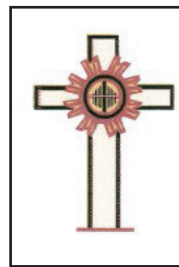
WORLDWIDE MARRIAGE ENCOUNTER

"I am the resurrection and the life; whoever believes in me, even if he dies, will live, and everyone who lives and believes in me will never die." Do you believe that Jesus is the Lord of your marriage? Bring God into your marriage by attending a Worldwide Marriage Encounter Experience. Visit our website at wwme.org or call (888) 574-5653.



Join us in praying and fasting for an end to abortion in your community until March 29. You are also invited to stand and peacefully pray during a 40-day vigil in the public right-of-way outside the Waukesha Planned Parenthood (426 W. Main St., Waukesha) for an hour between 8am and 7pm. Your prayers, fasting and witness change hearts.

For more information visit 40daysforlife.com/waukesha or call Bill at 262-894-3247.



THE CATHOLIC STUDY CLUB

The Catholic Study Club invites all women to our luncheon on Tuesday, April 14th. After the meal, we welcome Lieutenant Steve Johannik, who will share information on "Home, Vehicle and Self Protection." Reservations are required and must be made by March 24. Contact Rita at 262-547-4827 for more details.



VIRTUE BASEBALL REGISTRATION IS OPEN!

This summer, join a growing group of families in Lake Country and the greater Milwaukee area that share your beliefs and virtues by registering your child for Virtue Baseball!

Registration is open through March 31. No prior playing experience is required! To register please scan the QR code, visit www.VirtueBaseball.com or email connect@VirtueBaseball.com.

Virtue Baseball Club is an apostolate of the Men of Christ movement.



"Cast all your anxiety on Him because He cares for you." — 1 Peter 5:7

FINDING HOPE AFTER THE LOSS OF A CHILD

April 24-25, 2026

You are not alone. Your child is remembered. Grace meets you here.



Register at www.elizabethministry.com/events or call 920-766-9380 for more information.



Ground Crew Service
Full Service Landscape Management
262.821.9680
www.groundcrewservice.com

Hartland Terrace
 Assisted Living

- RN Lead 24-Hour Elite Care Team
- Full Continuum of Care • Memory Care
- All Inclusive Pricing • Private Studios
- Family Centered Care Model

327 North Avenue • Hartland | 262-369-4391
www.hartlandterrace.com

Wolf Electric LLC
 Commercial, Industrial, Residential

Garrett Wolf • Master Electrician/Parishioner
 Commercial • Industrial • Residential
 (414) 899-3608 • www.wolfelectricllc.com

PAUN Construction
 Specializing in Masonry Residential & Commercial

W300 N741 Christine Ln., Hartland, WI 53029
 Robert J. Paun (262) 926-6043
www.paunconstruction.com
 mail@paunconstruction.com

R&R INSURANCE
 Rick Kalscheuer Parish Member
 Tom McInerney
 Jon Budzney
 MyKnowledgeBroker.com
 800.566.7007
we know.

WISCONSIN ORTHODONTICS

HARTLAND • 262-367-7076
 WEST BEND • 262-306-0600
 WAUWATOSA • 414-463-5700
www.wisconsinorthodontics.com

Daniel Holzhauser, DDS, MS • Charles Hewett, DDS, MS • Joshua Barta, DDS, MS • Benjamin Schneider, DDS, MS

IF YOU LIVE ALONE

MDMedAlert!™ As Low As **\$19.95** mo.

✓ Ambulance/Police **CALL NOW!**
 ✓ Family/Friends **800.808.9294**
 ✓ GPS & Fall Alert **md-medalert.com**



TODD WANGERIN ELECTRIC, Inc.

Free Estimates - Licensed - Insured
 Over 20 years experience

Todd Wangerin 262-719-4411
 twelectric4411@att.net

Culver's
 BUTTERBREADS & FRENCH CUSTARD

701 Industrial Ct., Hartland
262-367-5800

ARKENSTONE
 Real Estate Experts
 Unleash Your Potential. Transform Your Land, Home and Business.
262-510-1096

Elevate your journey with us!



Lake Country Clean
 Stay Green, Stay Clean

- + Eco-Friendly Standard and Deep Cleaning
- + Residential and Commercial
- + Home Organizing

www.LakeCountryClean.com
 Service@LakeCountryClean.com + (262) 232-7720

BUNZEL'S OLD FASHIONED MEAT MARKET

Fresh Custom Cut Choice Meats
 Party Trays • Catering
 Thank You For Supporting A Family Tradition

9015 W. Burlington 414-873-7960
www.bunzels.com

Espire
 YOUR HOME FOR BUILDING HOME.

EspireHomes.com
262-746-2000
 Parish Members



Pat's Heating, Air Conditioning, & Electrical

OVER 35 YEARS OF EXCELLENCE
262-567-7499 • OCONOMOWOC
www.patsh heating.com

Hartland Family CHIROPRACTIC

211 Cottonwood Ave, Hartland
 (262) 367-7424
www.hartlandchiro.com




FOOT & ANKLE
 Associates of Wisconsin
 Parish Member
 Dr. Amy Galati

Call: (262) 542-3779
www.footandanklewi.com

Dental Care that Shines

parkway dental **Smile FX Dental**

DELAFIELD
 524 Milwaukee St., St 200
 Delafield, WI 53018
 262-646-7717

GREENFIELD
 6919 W Forest Home Ave.
 Greenfield, WI 53220
 414-545-8226

NEW BERLIN
 15855 W National Ave. Ste. 104
 New Berlin, WI 53151
 262-782-4220
 Smile@smilefxdental.com

Dr. Glenn Gequillana Dr. Sahar Karimuddin Dr. Hamza Omar Dr. Edward Park




JT ARBORISTS

262-719-1440

Mulch Madness
 Dyed and Hardwood Mulch
DELIVERY, PICKUP AND SPREADING OF MULCH IS AVAILABLE
 Hartland

TOWN BANK
 N.A.
 A WINTRUST COMMUNITY BANK

800-433-3076
www.townbank.us

VS VISU-SEWER, INC.
262-695-2340

Professional Sewer Inspection, Maintenance and Rehabilitation Services

Parish Members
www.visu-sewer.com

Palmer's STEAKHOUSE

www.Palmerssteakhouse.com
 122 E. Capitol Dr. • Hartland, WI
262-369-3939

FALBO PIZZERIA

Carry Out ~ Delivery ~ Catering
 262-367-2700 | FalboPizza.com
 Pizzas • Subs • Salads • Appetizers
 Located on 418 Merton Avenue off Hwy 16 in Hartland

CHARLES St.
 Parish and School

St. Charles School... We choose Christ in learning, living, & values in the light of our faith.
262-367-2040
www.stcharlesschoolhartland.com

JENSON MOTORS
 Auto - Truck Repair

Hours: Mon-Fri 7:30-5:30
 Proprietor: Guy Jenson
262-367-5556
 364 Cottonwood Ave., Hartland, WI




MATHNASIUM
 The Math Learning Center

BROOKFIELD • HARTLAND • OCONOMOWOC
www.mathnasium.com

Compliments of:
Boehme & Taylor, CPAs

LAKESIDE INTERNATIONAL TRUCKS **BADGERLAND IDEALEASE**

Offering Wisconsin businesses transportation solutions nearly 40 years.

- Truck Sales
- Parts
- Service
- Body Shop
- Leasing & Rental

Bill Reitley, Jr. Parish Member



SERVING: Milwaukee • Madison • Racine
 West Bend • Sheboygan • Janesville • Monroe • Rockford

EVERT-LUKO FUNERAL HOME
 & CREMATION SERVICES

Guiding with skillful hands and soulful hearts


262-367-2156
www.evertlukofuneralhome.com



Little space.
 Big impact.

Advertise here
 Call 800-950-9952

We help real estate investors invest in passive assets and defer tax.
 If you are planning on selling your investment property, let's talk.



Broaching Technologies
 Machines • Tooling • Subcontracting

Blind and Thru Hole: www.keyway-spline-broaching.com
 Broaching, Splining, Keyseating, P (262) 820-1200
 Slotting, Shaping sales@broachingtech.com

KLINK'S KARPETS, INC
 Hartland's Floor Covering Center
 Family Owned & Operated for over 47 Years
 Carpeting & Hard Surfaces
 107 North Ave. Hartland, WI
 367-4670 Parish Member

INSIGHT INVESTMENT ADVISORS

BRANDON BRUCKMAN
414-882-8738
www.investwithinsight.com

CMC
 CUSTOM MADE CABINETRY

For All Your Remodeling Needs!
 KITCHEN & BATH REMODELING
 COMPLETE HANDYMAN SERVICES

JIM FISCHER
fischerjames29@gmail.com
 414-614-7329

Generations DENTAL

Jim Muenzenberger, D.D.S.
 and Kelly Newman, D.D.S.
 Parish Members
GenerationsDentalHartland.com

139 E. Capitol Dr.
 Hartland, WI 53029
 Office 262-367-2750

Sprung Heating & Pump Service LLC

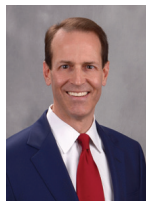
HVAC • PLUMBING • WELL PUMPS • GENERATORS
 PO BOX 3024 • MERTON, WI 53056
262-538-1400
www.sprungheating.com

Lake Country Eye Care

580 Hartland Dr. • Hartland, WI
 Amber A. Dentz, OD - Parishioner
www.lakecountryeyecare.com
 262-367-6610



Helping you achieve financial dreams



James Dunn
Managing Director – Financial Advisor
(262) 395-1101
www.dunninvestmentmanagement.com



Lake Five
LANDSCAPE SUPPLY LLC
Mulch • Firewood • Nursery
262-777-1523
W275N7813 Lake Five Rd Hartland, WI
LakeFiveSupply.com

Lake Country
Bed Barn
Good Morning Store
Mattress & Furniture Store
600 Hartbrook Dr, Hartland
Parish Member

Support Our Advertisers!

REICHL & KOLSTAD
ORTHODONTICS
Dr. Peter Reichl & Dr. James Kolstad
look forward to meeting you!
Offering Traditional Braces & Invisalign
Located in Waukesha, Mukwonago & Hartland
GOLD+ **262-547-2827**
www.ReichlKolstadOrtho.com

WISE
DESIGN BUILDERS
262-790-4444
Parish Members
www.wisedesignbuilders.com

HARTLAND SERVICE
AUTOMOTIVE REPAIR CENTER
400 E. Industrial Dr.
Hartland, WI 53029
262-367-4234
hartlandservice.com

COURI
INSURANCE
AGENCY
Protection for the Unexpected™
Coverages IMPORTANT
Pricing IMPORTANT
Low Costs
GREAT COVERAGES
Jerry & Judie Couri
262-548-8077 • couri.com

CCGI
Corporate Contractors Inc.
CCIWI.COM

CARPET PLUS, INC.
We Bring the Showroom to You!
(414) 573-0105
Proudly Serving Crusader Nation for over 25 years!
Dan Taylor, Parish Member

Angela Isherwood
Owner & Luxury Travel Designer
Parishioner
262.229.9271
Angela@OliveAndAtlasTravel.com
www.OliveAndAtlasTravel.com

Savings & care
24/7/365
Call, click or stop by today
State Farm
Joe Woelfle ChFC®
Agent
Parishioner
303 Oakton Ave
Pewaukee, WI 53072
Bus: 262-303-4441
www.insurelakecountry.com
State Farm - Bloomington, IL

hope-iatry™
Personalized Mental Health Care
for Children & Adolescents
support@hope-iatry.com
(262) 303-4017

PASTERNAK & ZIRGIBEL s.c.
FRANK PASTERNAK, PARISH MEMBER
BEST LAWYERS IN AMERICA
BEST LAW FIRMS U.S. NEWS & WORLD REPORT
TOP 25 MILWAUKEE & TOP 50 WISCONSIN SUPER LAWYERS
(262) 785-0802 injurywisconsin.com

OFFICE FURNITURE WAREHOUSE®
New & Preowned Office Furniture
Design, Delivery, Installation, & Liquidation Services
Elijah Walters (262)719-8621
ofwgo.com

-GRADING AND EXCAVATION SPECIALISTS-
Rough and Finish Grading • New and Old Construction
Egress Windows • Brush Clearing • Minor Demolition
Parishioner
TROY BOESL
Owner/Operator
414-254-9794
Cardinal SERVICES

NO INTEREST PAYMENTS UNTIL 2028

Pella WINDOWS & DOORS OF WISCONSIN
Visit the Pella Windows & Doors of Wisconsin showroom nearest you:
Brookfield | De Pere | Madison | Pellawi.com | (262) 783-6600
VISIT PELLAWI.COM FOR CURRENT OFFERS

Maddie Goedken
WEDDING PHOTOGRAPHER
Parishioner
maddiegoedkenphoto.com

Elegant Nails Spa
ELEGANT NAILS SPA
WHERE ELEGANCE BLOSSOMS
(262) 367-6688
600 Hartbrook Dr., Ste. 109 • Hartland, WI

Jonathan Riesch
Investment Advisor Representative GLOBAL VIEW CAPITAL ADVISORS
Powered by Armathea Investing - "Put your money where your faith is" Retail Investing for Catholics
• Tactical Asset Management • Retirement Planning
• Estate Planning (Trusts & Tax Mitigation)
jriesch@gvconline.com | (262) 650-1030 x117 | www.rieschfinance.com
Global View Capital Advisors is an affiliate of Global View Capital Management, Advisory services offered through Global View Capital Management (GVCM). GVCM is an SEC registered investment Advisory firm. Jonathan Riesch is an Investment Adviser Representative ("Advisor") with GVCM.

PLM
PAVING AND CONCRETE
A PAVE AMERICA COMPANY
262.691.3964 www.plmpaving.com

MS Landscaping LLC
(262) 352-6606
mslandscape72@gmail.com
MSLandscapingLLC.com
Hartland, WI
SERVICES:
• Dirt Work/Grading • Lawn Installation
• Fertilizing • Lawn Maintenance
• Lawn Aeration • Mulch
• Landscape Construction • Snow Removal
• Tree Work

Best Tuxedo Company
Best Price, Best Fit Tuxedo & Suit Rentals
phone or text:
608-412-0914
besttuxedocompany@gmail.com
Located in Lake County - Parishioner

AMUNDSEN DAVIS
ATTORNEYS
MICHAEL THURSTON PARISH MEMBER
ILLINOIS | INDIANA | MISSOURI
OHIO | WISCONSIN
WWW.AMUNDSENDAVIDLAW.COM

FRONTIER
TITLE & CLOSING SERVICES
1130 James Drive, Hartland, WI 53029
Office: 262-361-4466 Fax: 262-361-4462
www.frontiertitlellc.com
Frontier Title & Closing Services, LLC
Lake Country's Most Experienced Title & Closing Company
Specializing in Residential, Commercial & New Construction Transactions
Serving the Real Estate Community!

Wisconsin Dance Theatre Conservatory
Build-Your-Own Summer Intensive
July 7th - August 15th
wisconsintheatre.com

NELCO ELECTRIC, INC.
GERMANTOWN, WI
Commercial • Industrial • Residential
24 Hour Service **262-502-9950**
WWW.NELCOELECTRIC.COM
Barb Jarchow Parishioner

KJN Builders
Quality construction since 1991
Jim Lewein 414-881-4774
2lewein@gmail.com kjnbuilders.com

Custom Asphalt Solutions Since 1941
WOLF PAVING
Parking Lots
Private Roads
Walking Paths
Athletic Courts
wolfpaving.com

zimmerman
ARCHITECTURAL STUDIOS, INC.
2122 West Mt. Vernon Avenue
Milwaukee, WI 53233 | zastudios.com
TELEPHONE (414) 476-9500
FACSIMILE (414) 476-8582