



GOOD SHEPHERD

LUTHERAN CHURCH

NEWS AND ANNOUNCEMENTS

December 19, 2021
Updates and more information at gslcva.org/

Christmas Eve's readings

Isaiah 9: 2 - 7

Titus 2: 11 - 14

Luke 2: 1 - 14[15 - 20]

Next worship services:

December 24

- December 24, 2:00 p.m. -- Outdoor worship service -- [Click here to register](#)
(Preservice music at 1:30 p.m.)
- December 24, 4:00 p.m. -- Family worship service (Kid Friendly) -- [Click here to register](#)
- December 24, 7:30 p.m. -- Indoor traditional candlelight worship service (Livestream)-- [Click here to register](#)
(Preservice music at 7:00 p.m.)
- December 24, 10:00 p.m. -- Indoor traditional candlelight worship service -- [Click here to register](#)
(Preservice music at 9:30 p.m.)



Registration for services

By registering in advance of worship services, you help us plan for those services. When you fill out the Sign-Up Genius form for our worship services, we have a better idea of how many bulletins to print, how many communion packets to prepare, and even whether holding an outdoor service is viable. As always, registration is not required, but we do strongly encourage you to let us know in advance, if you can, that you will be attending.



Livestream links

Indoor worship service on Sunday morning at 11:00 a.m. will be a recorded livestream event. Our current livestream platforms are:

- Facebook Live (<https://www.facebook.com/events/158368062885622/>)
- YouTube (https://youtu.be/Gie08Xc_sCY)
- Vimeo (<https://vimeo.com/event/1064052>)

Note: These livestream links will also provide access to Principal Festivals like our Christmas Eve service.

Holiday adjusted services

There will be one service, in the sanctuary, at 9:30 a.m., on December 26 and January 2.

Sunday, December 26, 9:30 a.m. -- Indoor traditional worship service -- [Click here to register](#)

Sunday, January 2, 9:30 a.m. -- Indoor traditional worship service -- [Click here to register](#)

Christmas Eve overflow parking

We have been blessed to see a large number of early registrations for the Christmas Eve services. If parking limits have been reached for the 7:30 p.m. and 10:00 p.m. services overflow parking is available at the Montessori School. Please see the drawing to the right for more details.

Fellowship

Please join us for fellowship, coffee, and donuts around 9:00 a.m. in the Fellowship Hall.

Wednesday Bible Stories

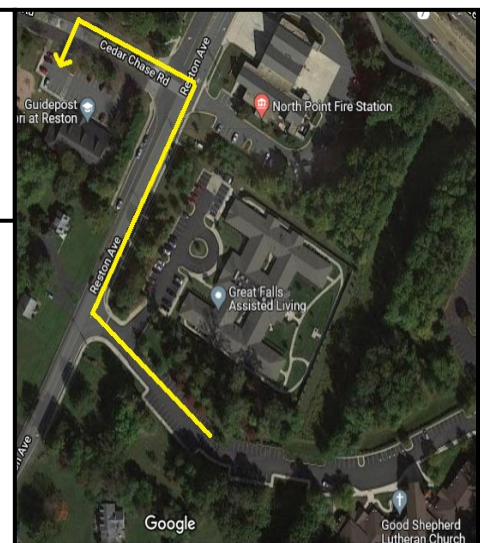
Good Shepherd Lutheran Church is pleased to release our continuing midweek feature, Wednesday Bible Stories. Join us as we use pictures, quotes, and thoughts to continue our exploration of the Bible via our social media platforms ([Instagram](#) and [Facebook](#)). This week we conclude our Advent special edition!

Music CDs for Advent, Christmas

"A King is Born," a 2-CD set featuring Advent and Christmas music sung by the GSLC Sanctuary Choir, will be available in the church entry area in the Fellowship Hall (near the coffee and donuts) through December. Suggested donations: \$20. Proceeds will benefit the Music Ministry.

Hypothermia giving tree

Good Shepherd will be supporting Support the North County Hypothermia Shelter with items for their clients. During cold weather, these items will help those who are homeless to make it through the winter. [For more information please click here](#)
OR contact Holly Vanderhoof, holly@gslcva.org, for more details.



Above & Beyond (A&B) catalog for 2021 - 2022

Thank you to those who have, or are looking, to respond to the Above and Beyond program this year. Your generosity enables us to expand our outreach to GSLC members, to our local community, and to worldwide outreach programs. The new catalog is available on our website or as a hard copy in the church office and Welcome Center. Look in the catalog on the pages indicated with each item, for a description of these opportunities and their funding needs. Check with Business Manager Georgia Thorstenson for the most up-to-date information on giving opportunities.

[Please Click here to see our FY 2022 A&B Catalog and other opportunities \(under the Giving Section\)](#)

For questions regarding A&B please contact Georgia Thorstenson at [geor-](#)



Baklava with Georgia

Join us, virtually, for Georgia's baklava class. During this 20 minute video you will see how to make this Greek inspired dessert. Visit the "[News & Resources](#)" section of our website for the video and the recipe!

Adult Education

Ladies Bible Study: "A Christmas Carol"

Tuesdays at 7:30 p.m. Heidi Cooper will be holding an ongoing series of evening Bible Studies via a teleconference platform, in lieu of a Sunday morning class. This series, entitled, *A Christmas Carol Book and Bible Study*, includes the *Christmas Carol* book and Bible study guide as well as Bible study discussion questions for each chapter, Scripture references, and related commentary. Sign up by emailing Heidi Cooper: heidi@gslcva.org.

Word Workers: "The Christ Key"

A Life Group that meets via a teleconference platform on the 2nd and 4th Wednesdays of each month from 7:30 p.m. to 9:00 p.m. The purpose of the group is to develop close relationships while sharing the spiritual journey. This year the group will be studying *The Christ Key* by Chad Bird. Word Workers welcomes all who would like to join! Sign up by emailing Melinda DeWan: dewanmelin@aol.com.

Parking for 8:00 a.m. service

As a reminder if you are attending the early service—the 8:00 a.m. indoor—please avoid parking in the lower parking lot near the preschool. This area will be used for the 9:00 a.m. outdoor service.

Coronavirus Relief Fund: accepting applications

Our Coronavirus Relief Fund is available for those among us who may be especially hurting (furloughed, unemployed, etc.) because of this crisis. If you know of anyone at Good Shepherd who is especially hurting, please contact the church office. If you are hurting but want to keep the information confidential, please contact Pastor Johann directly. To donate to the fund, make your contribution to GSLC, and note that it's for the Coronavirus Relief Fund.

Webpage focus group

Do you have ideas and suggestions for our website? Good Shepherd is looking to start a focus group in early 2022 to improve the ease of use and functionality of our website, www.gslcva.org. If you are interested in taking part please contact Jeff Donahue at jeff@gslcva.org for more information.

High School Ministry (HSM)

2022 Summer Workcamp – SAVE THE DATE! *Drum roll please*our next Workcamp (high school mission trip) location has been selected and this coming summer we will be serving in...[Erie, Pennsylvania](#)! **Mark your calendars and save the dates for our 2022 Sr. High Youth Workcamp: July 10-16, 2022.** Stay tuned for an informational letter and registration form that will be sent out in the coming weeks. Until then, mark your calendars and save those dates, and if you have any questions about Workcamp, contact holly@gslcva.org.

Upcoming HSM Events (Grades 9-12)

December 19 – Sunday School (Youth Room): 10:00 a.m. to 10:45 a.m.

January 2 – HSM: 6:30 p.m. to 8:00 p.m.

January 9 – Sunday School (Youth Room): 10:00 a.m. to 10:45 a.m.

January 16 – Sunday School (Youth Room): 10:00 a.m. to 10:45 a.m.

January 16 – HSM: 6:30 p.m. to 8:00 pm.

January 23 – Sunday School (Youth Room): 10:00 a.m. to 10:45 a.m.

January 30 – Sunday School (Youth Room): 10:00 a.m. to 10:45 a.m.

January 30 – HSM: 6:30 p.m. to 8:00 pm.

HSM630 Stay Connected! High school kids – download the GroupMe app and scan the code below to join our HSM630 Group Chat to stay connected for the latest information about youth group.



Angel Tree for Lake Anne Fellowship House

Good Shepherd has helped our older, low income neighbors at Lake Anne Fellowship House for years. Again, due to Covid-19 restrictions, LAFH is restricting all gifts to \$25 gift cards for shopping at local businesses (groceries, Target, Walmart, Kohl's, etc.). Good Shepherd will collect the cards and will deliver them to the social worker at LAFH for distribution to the neediest residents. Please drop your cards in the Angel Tree box near the office at Good Shepherd by today, Dec. 19, 2021.



Community Service and COVID-19. Active COVID protocols will be followed in most cases and are subject to change.

LAST DAY! Angel Tree for Lake Anne Fellowship House. Good Shepherd has helped our older, low-income neighbors at Lake Anne Fellowship House for years. This year is no different! Please note that due to Covid-19 restrictions, LAFH is restricting all gifts to \$25 gift cards for shopping at local businesses (groceries, Target, Walmart, Kohl's, etc.). Good Shepherd will collect the cards and will deliver them to the social worker at LAFH for distribution to the neediest residents. Please drop your cards in the Angel Tree box near the church office by the end of the day today, Dec. 19, 2021.

North County Hypothermia Shelter. Good Shepherd will once again be supporting the Fairfax County hypothermia shelter every Wednesday, December through March. COVID-19 restrictions are allowing for in-person servers to return but they will be limited to 3 individuals (2 are preferred). All volunteers that are serving must be fully vaccinated (two shots of Pfizer/ Moderna, one of J&J; extra booster even better) and provide proof (vaccination card) prior to “volunteering”. All servers must have their temperature checked and complete a short wellness check form on the evening they serve. Masks and gloves must be worn, and appropriate social distancing must be observed while in the hypothermia shelter. More volunteers may assist with getting the meal to the hypothermia room at the start of the evening and to take away everything at the end of the meal. Vaccination proof will only be done once if serving multiple times. All volunteers must be 18 years or older. You can also opt to make and/or coordinate meal and deliver to the Hypothermia Shelter and choose not to serve the meal – vaccination not required if you are not serving the meal.

Meals should be delivered between 5:30 p.m. and 5:45 p.m. to the Hypothermia Shelter, located in the North County Human Services Building, 1850 Cameron Glen Drive in Reston, just ¼ mile from the Embry Rucker Shelter. Food should be delivered hot and in disposable containers, along with all the napkins, plates, cups, and plastic utensils needed for the evening.

Restaurant food deliveries are also welcome! Please provide enough food for 40 people.

Sign up at <https://tinyurl.com/54wur4me>

South Lakes Food Pantry! We have collected, stored and distributed more than 225,000 pounds of food and toiletries in the last 18 months to families in need. What an incredible difference you’ve made in the community by your support of this incredible ministry. *If you are interested in helping, email Holly Vanderhoof, holly\ gslcva.org, to get up-to-date volunteer needs. Revised volunteer guidelines: masks required regardless of vaccination status.*

The pantry will be closed December 27 and December 29.

NO-CONTACT Donation curbside drop offs:

Mondays: 2:00 p.m. to 4:00 p.m.

Wednesdays: 10:00 a.m. to 12:00 p.m.

Donations may also be shipped to the church: SLHS Food Pantry,
c/o GSLC, 1133 Reston Ave., Herndon, VA 20170

URGENT NEEDS: jelly, diced tomatoes, spaghetti, boxed milk

Cornerstones Winter Coat Collection. Help our neighbors in need stay warm this winter! New or gently used coats and new hats, gloves, mittens and scarves may be donated at the following locations and dates.

January 8 at North County Government Center, 1801 Cameron Glen Dr., Reston, VA 20190 from 10:00 a.m. to 1:00 p.m.

Donations of children’s coats in all sizes and adult coats in sizes 3XL or larger are especially appreciated at this time.

The Closet of Greater Herndon. New volunteer opportunities! The Closet now requires proof of COVID vaccination from all staff and volunteers who work/volunteer at The Closet. This measure is being taken to protect the health and safety of the store’s customers, volunteers, and staff. *Masks required regardless of vaccination status.*

Signup at: <https://tinyurl.com/vv9czt8k>