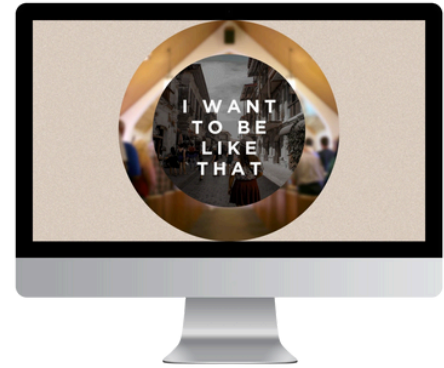


Sermon Discussion Guide

73



I Want to Be Like That!
June 1st – Romans 9:1-3

To Start:

- Make sure everyone has become acquainted with each other.
- Ice Breaker: When have you felt really burdened or brokenhearted for someone else's situation? What stirred that deep concern in you?

UP

"Life on Life"

- How does Paul's sorrow over the lost reflect God's own heart? (What does this show about God's love and longing for His people?)
 - What role does the Holy Spirit play in shaping our desires and burdens to match God's priorities? (See how Paul says "my conscience bears me witness in the Holy Spirit.")
-

IN

"Life in Community"

- How can we, as a small group, hold each other accountable for praying for and supporting the spread of the gospel?
 - What are some distractions or barriers among Christians today that can dull our concern for the lost? (How can we guard against spiritual apathy?)
-

OUT

"Life on Mission"

- Who in your personal life (family, friends, coworkers) comes to mind when you think of someone who is spiritually lost?
- What steps can you take this week to reach out or build a bridge toward a gospel conversation with them?
- What can we learn from ministries like the Timothy Initiative about reaching people who have never heard the name of Jesus?