

Sunday Worship Services

Sanctuary 9:00 am
Online 9:30 am
Chapel 10:30 am

Rev. Karla Shaw
Senior Pastor

2128 Chatsworth Blvd.
San Diego, CA 92107

Inside This Issue

Church News	2
Experience Jesus	4
Journey Into Deeper Faith	6
Strengthen the Church	8
Transform Our World	10
Life Events & Flowers	10
Staff & Session Info	11



Read this online!
pointlomachurch.org/spire-newsletter



Sign up for our weekly email newsletter!
Pointlomachurch.org

Our Vision

Loving everyone to LIFE with everything we have.

Our Mission

Through authentic community, we seek to *experience* Jesus, *journey* into deeper faith, *strengthen* the Church, and *transform* our world.

Values

We are a good home.
We are intergenerational.
We inspire engagement.

A note from Pastor Karla

The month of May brings with it a natural shift in pace. The days are getting longer, schedules start to change, and within that there becomes more “flex” time to connect—both with God and with each other. After a very full spring, this is a good time to be intentional about how we show up in the life of the church which includes the lives of one another.

The other day I watched a line of ants come through my patio door. Rather than call the exterminator, as I have quickly done in the past, I decided to watch. After a few minutes, I noticed something: ants rarely move alone for very long. Instead they build paths, carry what they can, and work with a steady, shared purpose. One ant on its own doesn't accomplish much, but together they create something far greater than the sum of their parts.

Fellowship in the church works in a similar way. It's not just a social extra or a way to fill our calendars, it's how we support one another, share the load, and stay grounded in faith over time. Whether it's a group gathering, a shared meal, or a conversation that goes a little deeper than usual, these moments help shape who we are becoming. Fellowship is essential in our shared mission to “Strengthen the Church”.

Throughout May and into summer, there will be a number of opportunities to connect—some structured, some informal (these you must create). If you've been on the edge of getting more involved, this is a good month to step in and take a risk. You don't have to commit to everything—just start by showing up.

As we move into this season, let's take the cue from

something as small as an ant: we're not meant to carry life alone. There's strength in walking together, and purpose in being part of something bigger than ourselves. Thanks be to God for the lessons we glean from God's smallest creatures.





Contribute to the Endowment

Make an impact today & for generations to come!

Scan the QR Code or visit pointlomachurch.org/give
Or call (619) 223-1633



The Endowment

AT POINT LOMA CHURCH

The Endowment at Point Loma Church is a lasting way to support the church's mission and ministries well into the future. Unlike regular giving, which supports the church's ongoing operations, gifts to the Endowment are invested, and only the interest is used to support special projects beyond the operating budget. These include both the care and improvement of church facilities and the development of new and innovative ministry initiatives that allow the church to explore fresh ways of living out its mission. Gifts are invested in a diversified portfolio with the Presbyterian Foundation and overseen by a dedicated committee with accountability to the Session, ensuring that each gift is stewarded with care. In this way the Endowment is designed to grow over time, enabling future generations to experience and share God's love through the church's work.

An example of one of these ways the endowment promotes our church's mission is the production of *1776*, which was made possible in part by the generosity of those who give to the Point Loma Church Endowment Fund. Taking place in June and July, this project reflects how the Endowment helps us step beyond our walls to create meaningful connections through creativity, collaboration, and hospitality.

Our Sanctuary, with its resemblance to Independence Hall and its ability to host large gatherings, provides a unique setting to welcome the wider community. As guests step onto our campus, they'll experience not only a memorable production, but also the warmth and hospitality of our church and the beauty of our newly renovated spaces. *1776* also provides an opportunity to partner with other local churches, bringing together a diverse and talented cast that reflects the broader body of Christ.

The Endowment doesn't just support projects; it helps open doors for ministry to grow in ways that extend far beyond what we might imagine. By contributing to the Endowment, you have a meaningful opportunity to leave a legacy of faith, generosity, and vision. Whether through planned giving, memorial gifts, or bequests, your contribution helps secure the future of the church's mission in the Point Loma community and beyond. Please remember the Endowment.

Generation to Generation

RENOVATION UPDATE

There's a growing sense of anticipation around campus as we begin to see the finish line for Phase Two of the Generation to Generation Renovation Project.

Inside the building, spaces are quickly taking shape. The new upstairs Kids Worship space and first-floor multi-purpose rooms are now being painted, and ceiling installation is underway. In the Preschool, cabinetry is going into the Infant and 1-year-old rooms— a glimpse into how close these spaces are to being ready for the kids they're designed to serve.

Outside, the vision is becoming even more tangible. The connection between the Preschool playground and the Plaza behind the Sanctuary is now clearly visible through an open walkway that beautifully frames the Sanctuary's stained glass window.

The central access to the second floor through the exterior stairs and elevator will make moving through campus easier and more welcoming, especially on busy Sundays and during community events.

Looking ahead, we expect the construction portion of Phase Two to be complete within the next month. Following that, we will move into final inspections and receive occupancy approval from the City. As summer unfolds, we're excited not only to open these new spaces but also to begin imagining—and dreaming together—about the ministry opportunities they will make possible.

As always, this progress is made possible by the generosity of our community. Thank you to everyone who has contributed to the Generation to Generation Capital Campaign. Your support is creating spaces that will serve our church and the broader Point Loma community for years to come.

If you haven't yet completed your pledge or would like to give for the first time, there is still time to be part of what God is building here. Make a contribution at pointlomachurch.org/give



Session Highlights

APRIL 22, 2026 SESSION MEETING | JOHN SPAFFORD, CLERK

The April Session meeting was moderated by Parish Associate Rev. Chris Lenocker, as Pastor Karla visited family out of town.

Finance Chair Elder Amy Radonich discussed the terms and conditions related to new Citi National Bank corporate credit cards, issued to Operations Director Althea Holford and Preschool Director Nicole Hage.

Radonich provided an update on plans for the solar electric project. Permits will be issued in about three months, and engineering is underway for modifications to existing equipment.

Lenocker discussed a change in church office hours. New hours are Monday to Thursday, 8:30am - 4:30pm, and Friday, 8:30am - 12:30pm.



Discover Our Community Class May 31 & June 7

Join us for our next Discover our Community class. This class provides an opportunity to meet others who are exploring and growing in their faith at PLCPC, learn what we believe and what makes this community unique, explore how your gifts can be expressed and get to know our leadership. After the second class, there is an opportunity to join the PLCPC community, if you choose. Lunch and childcare are provided for in-person attendees. Zoom link will be sent to online participants.

Scan the QR code to sign up!



EXPERIENCE JESUS



1776 Musical Coming Summer 2026

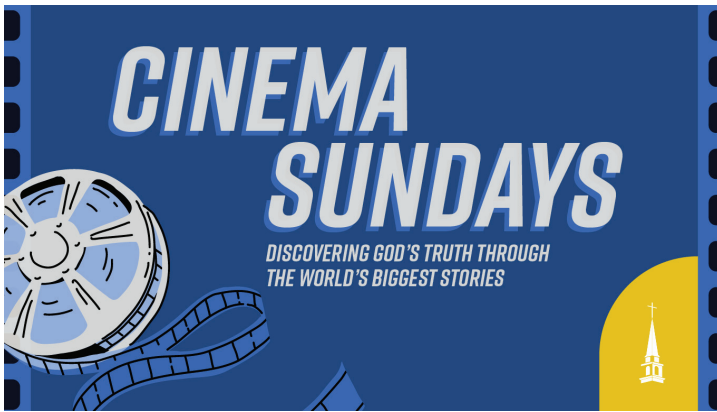
It's the summer of 1776, and the nation is ready to declare independence... if only our founders can agree to do it! This Tony award-winning best musical tells the story of the conflicts and compromises leading to the signing of the Declaration of Independence. Using humor and song, 1776 puts a human face on the pages of history.

Through a special co-production with Vanguard Theatre, 1776 will run at PLCPC on the following dates and times:

June 26, 7pm
June 27, 2pm & 7pm
June 28, 2pm

July 3, 7pm
July 4, 2pm
July 5, 2pm

July 10, 7pm
July 11, 2pm & 7pm
July 12, 2pm

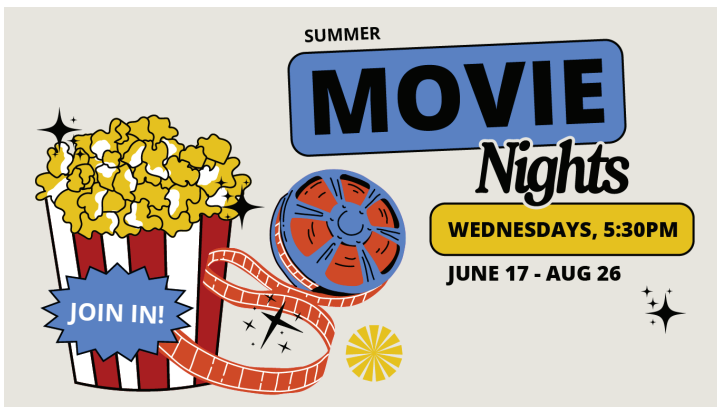


Cinema Sundays | Starting June 21

This summer, we explore themes from popular films alongside Scripture, uncovering how God’s truth speaks through the stories we love. From adventure and sacrifice to redemption and hope, each week reminds us that God is present in every part of our story—inviting us into something greater.

Summer Movie Nights Wednesdays, 5:30pm | 6/17 - 8/26

This summer we are diving into a new sermon series, Cinema Sundays, where we will discover God’s truth through classic movies. Join us Wednesdays to watch the movie that will be featured in the upcoming sermon. This is an awesome way to connect with community as we get ready for each Sunday’s sermon.



Music Ministry



Children’s Music Program

The children did an amazing time leading worship during the musical on May 3! If you have a child who would be interested in participating in a play like this, our fall music class registration will open this month! Class will start in August and students will have the opportunity to participate in a Christmas musical.



Summer Ensemble LEAD WORSHIP JULY 26 & AUGUST 30 REHEARSAL AT 8:00AM

For extra practice or to preview music, singers are welcome to attend rehearsal on Thursday, June 4 and/or May 28 at 7:00pm. Contact Alicia if you are interested at alicia@pointlomachurch.org and to get listening links for rehearsal.

JOURNEY INTO DEEPER FAITH



Red Brick Preschool

Nicole Hage, Preschool Director

preschool@pointlomachurch.org

619-223-1633 x220

Spring is in full bloom at our preschool, and it has been a joyful and busy season! We recently hosted our Art Show, where children proudly displayed their creativity throughout the campus. Each classroom also collaborated on a special group project that was raffled off—such a fun way to celebrate both teamwork and artistic expression!

Our students are also experiencing the wonder of God's creation firsthand as they learn about the lifecycle of a butterfly. Watching caterpillars transform into chrysalises and then emerge as beautiful butterflies has been a meaningful and exciting process for the children.

As we head into the final stretch of the school year, we are looking forward to celebrating our graduating students as they prepare to move on to elementary school. Our last day of school will be May 22nd, followed by two months of fun-filled summer camps.

It's a special time of growth, discovery, and celebration here at the preschool, and we are so grateful to be part of each child's journey.



children & family MINISTRY

Sarah Butterfield, Director of Children & Family Ministry

sarah@pointlomachurch.org | 619-223-1633 x215

VBS Build Day

June 6, 9am-1pm



VBS Build Day | June 6, 9am-1pm | FLC

Help get our campus ready for VBS! We need all hands on deck and kids as young as 7 are welcome and encouraged to come help!

VBS Volunteer Training | May 31, 3-4pm | FLC

This is a mandatory training for all volunteers and those under 18 are especially encouraged to attend! (Ice cream sundae bar included!)

Youth

Ryan Silvia, Director of Youth & Young Adults Ministry
ryan@pointlomachurch.org | 619-223-1633 x215



CONGRATULATIONS to our student who completed confirmation pictured here from left to right: Soren Shaw, Ketsia Karesh, Shea Waldron.

JOIN IN WEEKLY!

YOUTH WORSHIP SERVICE

Sunday Mornings, 10:30am during Chapel service

YOUTH GROUP

Sundays, 4:30-6:30pm

Junior High and High Schoolers join us on Sunday nights to eat, have fun and get to know about Jesus!

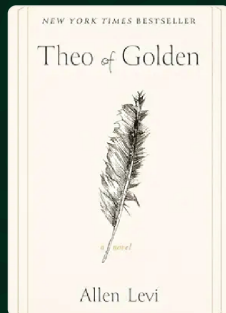
WELCOME TO YOUTH GROUP • MAY 31, 4-6PM

Incoming 6th graders, please join us on May 31 after the VBS volunteer training to check out youth group!

FAITH & FICTION BOOK CLUB

Next Meeting:
19
MAY

Currently Reading: *Theo of Golden*
by Allen Levi
Location: Chapel
Time: 6:30 - 8:00 PM



Faith and Fiction Book Club May 19, 6:30 - 8:00pm | Chapel

In this book club we dive into fiction and explore connections to our faith. Whether you're a seasoned bookworm or a casual reader curious about exploring faith through the lens of fiction, everyone 18 and older is welcome! We will meet in the chapel and discuss *Theo of Golden* by Allen Levi.

THE BOOK OF JONAH Debrief the Sermon

NOW - JUNE 14
IN THE CHURCH OFFICE
AND ON ZOOM

SUNDAYS

10:30AM-11:15AM

Debrief the Sermon

Come for conversation and reflection as we unpack the sermon together. We meet from 10:30-11:15 in a hybrid model of in-person in the Church Office or online through the zoom link in the chat after the online services. Come when you can, each session stands alone. Questions? Email Cheryl Louie at clouie3@gmail.com

STRENGTHEN THE CHURCH

Deacons Pancake Breakfast



SUNDAY, JUNE 14
9:30-11:00AM
FAMILY LIFE CENTER

PROCEEDS BENEFIT THE DEACON FUND

PLCPC Deacons will be serving delicious, homemade pancakes. Proceeds to benefit the Deacon Fund. Come join us for fun, fellowship and a full tummy!

Senior Adult MINISTRY

Elaine Burrell, MSW, CSA, *Director of Senior Adult Ministry*
elaine@pointlomachurch.org | 619-223-1633 x210



MEXICAN FIESTA LUNCH WITH MARIACHI OLMOS

**Tuesday, May 12 | Doors open 10:00am, Music 11:00am,
Lunch 12:00pm | Family Life Center | \$7 at the door**

For only the second time in Senior Adult Ministry history, our luncheon will feature live mariachi music joyfully provided by the premiere group from Chula Vista: Mariachi Olmos! Our lunch menu is a Mexican feast consisting of chicken enchiladas, beans, rice, chips and a hot churro for dessert. Colorful attire encouraged; bring a friend! RSVP by Sunday, May 10. Olé!

SENIOR TECH CONNECT: SMARTPHONE BASICS

Wednesday, May 20, 11:00-12:30pm | Family Life Center

Back by popular demand, Dylan Willis from Senior Tech Connect will teach us all about unlocking the potential of our smartphone. Topics include: Smartphone Confidence, Hardware Basics, Organizing Your Smartphone, Emergency Essentials and more! Bring your smartphone fully charged and your questions. RSVP to Elaine.



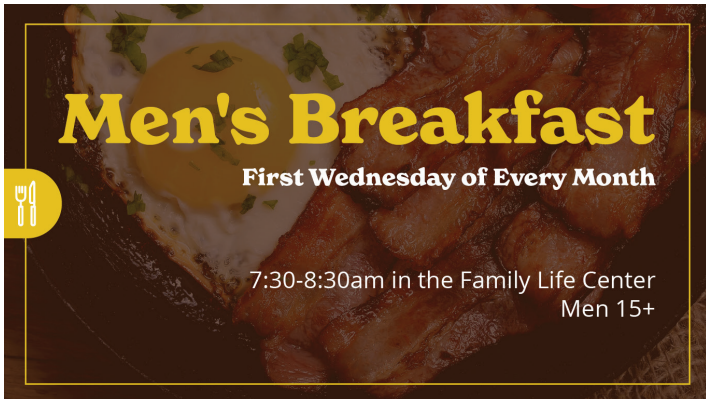
SENIOR TECH
CONNECT

PIZZA & MOVIE: E.P.I.C.: ELVIS PRESLEY IN CONCERT

Wednesday, May 27, 11:00-12:30pm | Family Life Center

Re-live the phenomenal charisma of the King of Rock & Roll, Elvis Presley, in this documentary featuring dazzling performance footage from the early days of his Vegas residency. Witness never-before-seen archival footage unearthed for the first time. You will be captivated by this riveting cinematic portrait of the greatest performer of all time. RSVP by Monday, May 25.

Activity Groups



Men's Breakfast
First Wednesday of Every Month
7:30-8:30am in the Family Life Center
Men 15+

Mens Breakfast | June 3

On the first Wednesday of every month we will be gathering together in the FLC for fellowship, encouraging teaching time as well as a home cooked hearty breakfast! All men ages 15 and older are invited to join us! No registration needed. Just show up ready to eat!

Prayer Quilt Ministry | 1st Sat. of the month, 9am-3pm, FLC

Come make quilts on the first Saturday of the month from 9:00am - 3:00pm in the Family Life Center to bless those in need. Each quilt is placed in the Sanctuary, where our church family "ties in" prayers—knot by knot. These quilts offer comfort, hope, and a tangible reminder of God's love. Request a prayer quilt by emailing redbrickprayerquilts@gmail.com

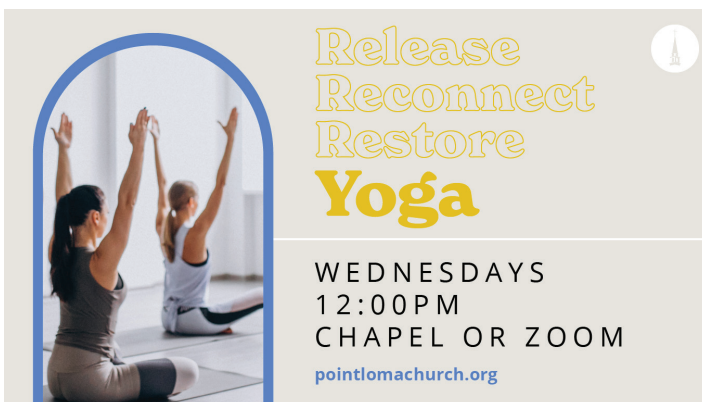


Prayer Quilt Ministry Retreat
May 28-30
Family Life Center
pointlomachurch.org/register

Prayer Quilt Retreat | May 28-30

Please join us as we gather on campus in the Family Life Center of PLCPC for our 2026 retreat. We will have three days of sewing, food and fellowship! There is no cost to come and sew or just hang out, but there is a charge if you would like to participate in meals.

Register



**Release
Reconnect
Restore
Yoga**
WEDNESDAYS
12:00PM
CHAPEL OR ZOOM
pointlomachurch.org

Yoga Wednesdays, 12:00pm Chapel

Take time to pause from the busyness and reconnect to what's most important, our healthy and balanced walk with Christ, during our weekly yoga class.



Scan to join
online!

Knitters & Crocheters | 2nd Thurs. of the month, 10am, Parlor

All who enjoy knitting or crocheting at any level of expertise are invited to join us. We knit or crochet 8" squares that are assembled into blankets for New Day Urban Ministries, Genesis Diez Orphanage and Military Outreach Ministries. Our members range in age from 13 to 80+, and there is always room at our table for more!

Join The Transform Our World Mission Group

The Transform Our World Mission Group is a great place to be part of how our church lives out its calling to serve beyond our walls. This team meets on the second Tuesday of each month to support and strengthen mission efforts—reviewing grant applications, helping distribute funding each summer, and organizing meaningful drives that care for our community and partners.

If you have a heart for missions or simply want to learn more about how we make an impact locally and globally, you're invited to join. Whether you're ready to jump in or just want to listen and grow, there's a place for you.

Join in:

- Come to our meetings on the second Tuesday of month at 7pm in the Chapel
- Email Michele Reynolds, Transform Our World Lead Elder, at mreynolds619@gmail.com for more info



MAY FLOWER DONATIONS

Each week, the Deacons deliver flowers in order to brighten days and bring cheer. We are so grateful to those who have donated to make this flower ministry possible. The flowers this month are given...

MAY 3

By Cindy Wright, James Stradling and Janet Gompper in loving and joyful memory of their parents Julia and Cornell "Corky" Stradling.

And, in loving memory of my dear Linda, by Fred Daughtery.

MAY 24

By Jean and Mike Collins in loving memory of her mother, Ruby Lippels

MAY 10

By Clara Larson in loving memory of my husband, Leland Curtis Larson.

And, by Robert Tripp Jackson in celebration of his mom's 81st Birthday!

MAY 31

In honor of the VBS volunteers, especially the kitchen crew.

And, in memory of my dear husband Chuck Wright.

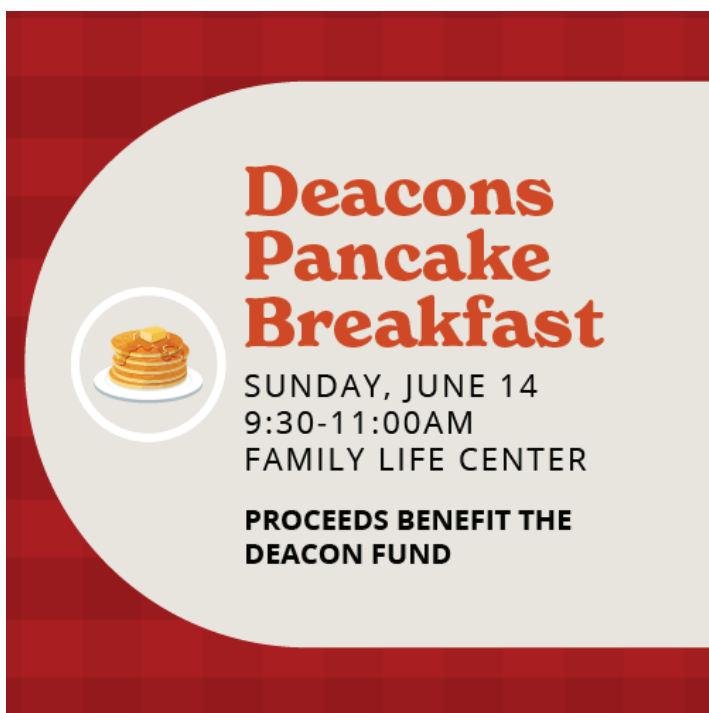
MAY 17

By Vici and Jim Willis in memory of their parents, Anita and Lee Byron Willis and Regina and Herman Walter and in honor of all Mothers!

And, by Treasa Skiles in loving memory of her husband, Mike Skiles




COMING UP



**Deacons
Pancake
Breakfast**

SUNDAY, JUNE 14
9:30-11:00AM
FAMILY LIFE CENTER

**PROCEEDS BENEFIT THE
DEACON FUND**





SUMMER

MOVIE
Nights

WEDNESDAYS, 5:30PM

**JUNE 17
- AUG 26**

