

# Spire

December  
2023  
Vol. 32  
No. 11

## A note from Pastor Karla...

When I was traveling in Russia during college, my friends and I decided to take an overnight train. This was in the mid-90's not too long after the collapse of the Soviet Union, so the aftermath of the previous turmoil left an evident depression over the country. Being in a foreign nation is always disorienting, but the 1990's in Russia were particularly daunting. I remember vividly military men strapped with rifles on nearly every street corner. The buildings were painted terrible, drab colors. The cars all looked the same. The water came out of the faucet with an orange tint, smelling equally suspicious. But the worst was the train station, packed with people and tracks going every direction. My friends and I waited, fearfully and anxiously, for what felt like an eternity, to board the train to take us out of the country. When our desired train pulled into the station, relief flooded the group.

The Advent Season is a reminder to us that we are trapped in a drab story as well. This life we see with our naked eye has its beauty, but it is not the end of the story. We, too, are waiting for the arrival of hope, peace, joy, and love on Christmas morning. Jesus Christ ushered in the possibility for a more abundant life. Thankfully we get glimpses of that here and now, but we also wait for another arrival when the fullness of God will be present in a way no one can deny. Will you join me in the waiting this season? The best, my friends, is yet to come.

**Rev. Karla Shaw**  
Senior Pastor



Join us Christmas Eve!  
Dec 24

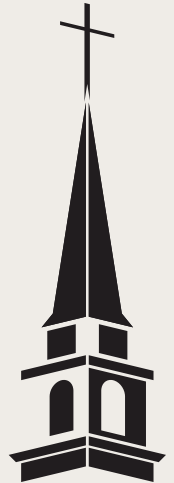
**10:00am Cafe Service**  
Chapel

**4:00pm Family Service**  
Sanctuary & Livestream

**6:00pm Online Service**  
[PointLomaChurch.org](https://PointLomaChurch.org)

**7:00pm & 9:00pm Classical Services**  
Sanctuary

**Point Loma  
Community  
Presbyterian  
Church**



## Worship Services

Sundays  
Sanctuary Service 9:00 am  
Online Service 9:30 am  
Café Service 10:30 am  
in the Chapel

Rev. Karla Shaw  
Senior Pastor

2128 Chatsworth Blvd.  
San Diego, CA 92107

## Inside This Issue

Church News .....	2
Experience Jesus .....	3
Journey Into Deeper Faith .....	4
Strengthen the Church .....	7
Senior Adult Programs .....	8
Transform Our World .....	9
Life Events .....	9
Staff & Session Contacts .....	10

## Looking Ahead

Dec. 8	Shabbat Dinner
Dec. 9	Advent Quiet Day
Dec. 10	Red Brick Christmas
Dec. 17	Blue Christmas Service
Dec. 17	Youth Christmas Party
Dec. 24	Christmas Eve Services



**Sign up for our weekly  
email newsletter!**

[PointLomaChurch.org](https://PointLomaChurch.org)

## Our Vision

Loving everyone to *LIFE* with everything we have.

## Our Mission

Through authentic community, we seek to *experience* Jesus, *journey* into deeper faith, *strengthen* the Church, and *transform* our world.

## Values

We are a good home.  
We are intergenerational.  
We inspire engagement.

## CHURCH NEWS

### Supporting PLCPC's Mission for Generations to Come

STEVE SMITH, CHAIR PLCPC ENDOWMENT COMMITTEE

The end of the year has traditionally been a favorite time for members and friends of PLCPC to contribute to the Endowment. In 2023, we again invite contributors to the long-term work of the church.

There are several reasons for year-end endowment gifts. It is a time we think of the past and consider the future, and the Endowment is all about the future. The end of the year requires us to finalize financial and tax matters. It is also when many of us must review our "Required Minimum Distributions" (RMD) from IRAs and similar retirement plans. In each case, the Endowment may play a role. Here are some examples of ways of making contributions, each with significant tax advantages:

Charitable contributions (including to the Endowment) may be made from IRAs.

"Required minimum distributions" may be met by charitable contributions, including to the Endowment.

Appreciated property (stock, for example) can be contributed to PLCPC.

Cash donations to the Endowment are subject to the usual charitable donation rules and deductions.

In considering the Endowment, it is essential to remember the nature of the Endowment and how it relates to other giving opportunities in the church. The Endowment is legally and ethically committed to the long-term future of the church. All gifts to the Endowment are invested in the "principal" of the Endowment, and only the income (interest and dividends) are available to spend. That income, however, will be produced and available each year

for the church's future.

There are several ways to contribute to the work of PLCPC. The two most common are gifts to the annual fund, which pays for activities in the current year, and a "specific purpose" gift to be spent (perhaps over several years) for a particular program (e.g., music, missions, or facilities). These are important ways of supporting the work of the church. The Endowment is an additional way, and it focuses on supporting the long-term mission of the church. In this way, contributions to the Endowment supplement and support annual and program gifts.

We welcome questions and comments. Please feel free to contact the chair of the Endowment Steve Smith at [SRS@cwsu.edu](mailto:SRS@cwsu.edu), or Jolene Wade in the church office [jolene@pointlomachurch.org](mailto:jolene@pointlomachurch.org)



#### Sign up to Serve at PLCPC

God has given everyone gifts and talents, and we are very grateful that so many volunteers use those talents right here--serving the church. Our volunteers are crucial to keeping the church running.

Check out all the ways to serve around campus at [pointlomachurch.org/serve](http://pointlomachurch.org/serve)



Each Christmas, our Sanctuary and Chapel are decorated with poinsettias, greens and trees to enhance the Advent Season.

#### Contribute at:

[pointlomachurch.org/register](http://pointlomachurch.org/register)



#### FAITH FORWARD TAKE A STEP >>>

You recently received information about PLCPC's 2024 giving campaign in the mail. Don't forget to take a step and fill out your commitment card at [POINTLOMACHURCH.ORG/FAITHFORWARD](http://POINTLOMACHURCH.ORG/FAITHFORWARD)

We are over two thirds of the way to our pledge goal!  
**Make your pledge today!**



## Session Meeting Highlights | NOVEMBER 15, 2023

Another milestone was passed at the November Session meeting when the Generation to Generation Building Committee's selection of Prava Construction Services, Inc. as the general contractor was approved.

Community Life Director Evan Gratz introduced the Deacons Class of 2026 for Session "examination." He and Rev. Chris Lenocker had prepared the deacons-elect with a course of study, and each deacon presented a statement of faith to a small group of elders. The Session joyfully "concurred with the election" of Deacons Tom and Jo Lancaster, Mike Long, Carol Irwin, Jennifer Moser, and Fran Eppig.

The Session spent some time considering strategic staffing options, heard another good financial report, and learned from Elder Martha Lenocker about the new Visual Arts Committee. And all were surprised and pleased with Pastor Karla's announcement that the Quieter Non-Residential Program will begin replacing windows and doors on certain parts of the campus on December 11.

**John Spafford**  
Clerk

## EXPERIENCE JESUS

### Engage with Us Online

Have you ever missed Worship? Or been especially moved by a song or message? We maintain a vast library of online resources including past worship services, choir selections and even Bible studies on our YouTube channel and other social media platforms. Find, follow and like us to keep up with the latest news and events!

[pointlomachurch.org](https://pointlomachurch.org)

[!\[\]\(5361750c22c4e047a52f4eac1ec2d4cc\_img.jpg\)](#) [!\[\]\(f276343e5e0d2402c20fdc9e8443c0dd\_img.jpg\)](#) [!\[\]\(f63d0a0c6c21d1cd8465081c8a0d79d6\_img.jpg\)](#) [@pointlomachurch](#)

### We Have a Podcast!

The Point Loma Community Church Podcast includes the weekly sermon and other special classes. Listen each week on your favorite podcast platform.

 [pointlomachurch.org/podcast](https://pointlomachurch.org/podcast)

Release  
Reconnect  
Restore

Wednesdays  
Noon  
Chapel or Zoom



**GET THE  
ZOOM  
LINK**

Take time to pause from the busyness of the holiday season and reconnect to what's most important, our healthy and balanced walk with Christ, during our weekly yoga class.



**JOIN US SUNDAYS DECEMBER 3 - DECEMBER 24**  
for our Advent series entitled **Arrival**

9:00am Sanctuary  
9:30am Online  
10:30am Chapel

**BLUE CHRISTMAS**  
**A Service of Remembrance**  
DEC. 17TH, 5PM | CHAPEL

**Childcare provided**



# JOURNEY INTO DEEPER FAITH



## The Messiah: Comfort and Joy

AN ADVENT QUIET DAY

Come away from the Christmas rush and enjoy a quiet moment with Jesus, the Messiah. Discover the truths of the promised comfort and joy that come with knowing the Christ of Christmas!

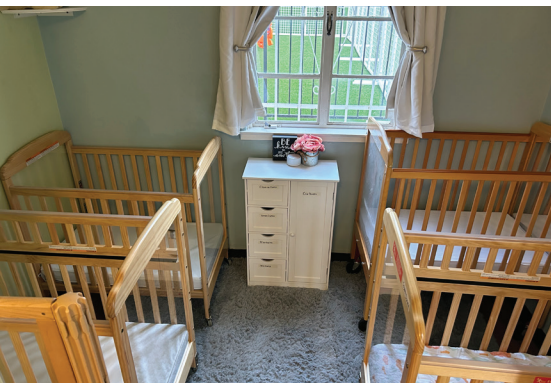
This event will take place at the Point Loma home of the Wylie family and via Zoom. Specific address will be sent after registering.

**Saturday, December 9 • 8:30am-2:30pm**

**\$40 for in-person** includes a light breakfast, lunch, & retreat materials.  
**\$15 for online**



[POINTLOMACHURCH.ORG/REGISTER](https://pointlomachurch.org/register)



## Red Brick Preschool

We are excited to announce we have our infant care license and have opened an infant classroom for 8 children. We now serve children 6 weeks old to Kindergarten. The week of December 4th we will have Gifts to the Manger. This is where the preschoolers can bring in needed items for babies to be donated to M.O.M.

The Preschool Christmas program will be on December 15th at 12:30 PM in the sanctuary. This will be a fun family event to start off our Christmas Holidays.

Registration for next school year is right around the corner! If you are interested in getting more information, please visit our website at [redbrickpreschool.com](https://redbrickpreschool.com) and schedule a tour. You can add your child to our waiting list on our website. We will be mailing out registration information letters soon. We will have half day and extended day options in the fall.



**Red Brick PreSchool's new Infant Room is now Open!**



**Sarah Butterfield, Director of Children & Family Ministry**  
sarah@pointlomachurch.org | 619-223-1633 x215

November was all about gratitude in Kids' Cafe. I'm grateful for all the fun we had at our Bingo Night and Ice Cream Social. Nearly 60 people joined in the fun, ages 4 to 70! It was certainly special to gather as families and enjoy the simple pleasures of ice cream and a chance to win prizes. Thanks to everyone who came!



December will center on the miracle of Christ's birth! We will especially be emphasizing the idea of waiting. In all the excitement around Christmas, kids have first-hand experience around waiting, but we will be highlighting the excitement of Jesus' arrival and our anticipation of his return!



**Don't miss our annual Red Brick Christmas happening Sunday, December 10, from 3-5 PM.** In true "Polar Express" fashion, guests are encouraged to come in their pajamas and enjoy the cookies, hot chocolate bar, Christmas crafts, and visit with Santa!

## SAVE THESE DATES

- **December 12:** MOPS Christmas celebration, 9:30-11:30m
- **December 19:** MOPS Mom's morning out, 9:15-11:45pm

## Children's Music Programming



Registration open for the new year!

### Children's Music & Movement Class

Ages 4-6 | Wednesdays,  
4:00pm - 4:45pm  
Starts: Jan 10

### Music, Improvisation & Drama

Grades 2-6 | Thursdays,  
4:00pm - 6:00pm  
Starts: Jan 11

[pointlomachurch.org/register](http://pointlomachurch.org/register)

## Joining us for Christmas Eve?

Childcare will be available at the 10:00am & 4:00pm services.





**Brick Youth Group**  
brick youth@pointlomachurch.org

**SUNDAY 12/10**  
**Red Brick Christmas**

Instead of Youth Group students can come serve and get some cookies. Parents can pick up their students after the event at 5pm.

**SUNDAY 12/17**  
**White Elephant Christmas Party**

In the Youth Room, 4:30-6:30pm. All students grades 6-12 are invited for games, crafts and a big White Elephant gift exchange. The limit for the gift is \$15 and cannot be something that is alive or was once alive.

**SUNDAYS 12/24 AND 12/31**

Youth Group will take a break, but will resume again on 1/7. Again from 4:30-6:30 up in the Youth Room.



**Welcome Ryan!**

**Our new Director of Youth and Young Adult Ministry**

Ryan has been a ministry leader in various churches for the last 10 years. His walk with Christ began while in college at UCSB and he has been in love with the Lord ever since. Ryan is also a big nerd and loves all things puzzles, Marvel and legos. His passion is to show all students here at PLCPC and around San Diego that God loves them exactly the way they are. Ryan believes that there's fun to be found in everything and hopes to share the joy and love of Jesus in everything he does.

**MEN@WORK**  
**TUESDAYS, 8:30 AM | LIBRARY AND VIA ZOOM**

We meet each week for a time of fellowship and Bible study. Afterwards, when needed we perform repairs, painting, and fix-it projects on our church campus and for the preschool.

For work projects contact Allen Hobbs, allenmhobbs@msn.com or Sam Bick, samuelbick@aol.com. For the Zoom link and Bible study information contact Em Cummins, emcum@sdsu.edu.



## STRENGTHEN THE CHURCH

**As a Deacon, we are blessed to deliver our beautiful Sunday flowers to members of our congregation.**

The occasions vary from the happiness of a baby's birth to the passing of a loved one. Cards are prepared with thoughtful messages and the Deacons then hand deliver the bouquets. It is so uplifting to witness the joy and gratitude of each recipient. We certainly hope that the flowers brighten everyone's day and that they know the Deacons and staff of PLCPC are thinking of them!



### Red Brick Knitters

Founded over a decade ago, knitters have gathered in fellowship to knit and crochet squares which are assembled into blankets. To date, the Red Brick Knitters have created and donated over 1,000 blankets to New Day Ministries, MOMs, and Rancho Genesis. At this time we welcome new participants who wish to connect with others in a creative atmosphere.

#### Knitters meet

- **Second Thursday of each month**
- **10:00 a.m. in the Parlor**
- **All ages and levels of knitters, crocheters, & crafters welcome**

Call or text Hope Roel for information at (619)742-3986.



### Wine, Women, & Word

Sixteen women gathered in the home of Jean and Carl Federici on October 19th for dinner, wine and fellowship on their lovely patio. We will reconvene in the new year after the holidays.

If you would be willing to host a gathering in your home in 2024 (food and beverages provided) please contact Judy Nissen, [jnissen2019@gmail.com](mailto:jnissen2019@gmail.com) for details and to answer any questions.



### Memorial Guild Tea

On October 24th an afternoon tea party was held in honor of all our Memorial Guild volunteers for their dedication and hard work. Working in teams, the Memorial Guild holds memorial receptions for grieving families 10-15 times per year. Approximately 30 volunteers enjoyed the tea. The staff served the tea sandwiches and sweets, and poured the tea at each table set with fine china.

# Senior Adult Ministry Programs

## GOLDEN BACHELOR FINALE WATCH PARTY & DISCUSSION

**Friday, December 1, 1:00-3:00pm • Family Life Center**

The Golden Bachelor is a spinoff of the popular reality TV dating show, The Bachelor, featuring adults aged 60 and over. In this finale episode, The Golden Bachelor (Gerry) makes his final selection of his true love. The live final episode airs Thursday night, so if you don't want the outcome to be spoiled, avoid all media until we watch the finale together! Don't worry if you haven't seen the show before; we will bring you up to speed! Light refreshments provided.



## TIMKEN MUSEUM TOUR IN BALBOA PARK

**Wednesday, December 6 • Depart in church van at 12:00; Tour at 1:30pm - \$10**

The dazzling holiday installation, Jewels of the Season, will showcase the exquisite ornaments designed by San Diego artists Florence Hord and Elizabeth Schlappi. Often compared to Faberge eggs, each ornament features semi-precious gems, sequins, stones, and filigree collected around the world by the two artists. We will receive a docent-led tour which also includes the Putman Collection of European old masters, American art and Russian icons. We will arrive at Balboa Park with time to stroll the park before our tour at 1:30pm. Space is limited.

## CHRISTMAS LUNCHEON WITH ENTERTAINMENT

**Tuesday, December 12 • Family Life Center • \$7 at the door  
10:00am doors open • 11:00am Entertainment • 12:00pm Lunch served**

Oscar Arias and Candy Silva will bring their fun & jazzy musical holiday cheer for our annual Christmas luncheon. Join us for a festive meal of savory ham, sweet potatoes and all the fixings. Kindly RSVP by December 8.

## FALL PREVENTION WORKSHOP

**Wednesday, December 20, 12:00 - 1:00pm • Family Life Center**

Falls among adults 65 and older are common and present a significant challenge to the health, wellbeing, and independence of seniors. This talk will highlight local and national statistics, common risk factors, effective fall reduction strategies, and related community resources. Sponsored by the San Diego Fall Prevention Task Force and UC San Diego Health. Coffee and light refreshments provided.

## FOREVER FIT WEEKLY CLASS & CHRISTMAS SOCIAL

**Every Wednesday, 9am - 9:50am • Family Life Center • Instructor: Elke Ertle**

**Christmas Social: Wednesday, December 20 immediately following class**

Join us weekly for this free, gentle exercise class especially for senior adults. Exercises are chair-based with some standing with a focus on flexibility, balance and core strength. Equipment provided, no reservation needed. Offered in partnership with the Ryan Family YMCA. For the annual Christmas social, bring a brunch dish of any type to share (optional) and the recipe which will be compiled into a recipe book by Elaine.

**Register**

**ONLINE** [pointlomachurch.org/register](https://pointlomachurch.org/register)

**CONTACT ELAINE** (619) 223-1633 Ext. 210 | [elaine@pointlomachurch.org](mailto:elaine@pointlomachurch.org).



## ONGOING STRENGTHEN THE CHURCH OPPORTUNITIES

### Prayer Quilt Ministry

1st Saturday of the month,  
9:00 am - 3:00 pm | FLC

Contact Maureen Blackhall,  
maureenblackhall@gmail.com  
Request a prayer quilt, email  
redbrickprayerquilts@gmail.com

### Red Brick Knitters

2nd Thursday  
of the month,  
10:00am | Parlor

### Prayer Requests

Submit Prayer  
requests to the  
Prayer Chain at  
[prayer@pointlomachurch.org](mailto:prayer@pointlomachurch.org)



### Women's Retreat 2024

We hope that you will join us for a spiritual and fun weekend, connecting with Christian women, strengthening our faith, and taking a deep breath from our busy lives. We will hear from guest speaker Eileen Moran VanGieson and dig into the theme of being Rooted and Grounded in Love. Find out more at [pointlomachurch.org/womens-retreat](http://pointlomachurch.org/womens-retreat)

## TRANSFORM OUR WORLD

### An Update from Together For The Family

A MISSION PARTNER OF POINT LOMA COMMUNITY PRESBYTERIAN CHURCH



#### TFF's new health center

The mustard seed became a large tree, and birds came from all directions to rest in its branches. This is exactly what happened. The great love, generosity, and attention provided by our partners resulted in the construction of this health center, which was visited by 280 patients just two days after the inauguration ceremony on September 20. It is a dream and hope for every suffering person who cannot pay for a doctor's visit or buy treatment. Thank you, my beloved ones, for you imitate your Master our Lord, who was roaming the earth doing good and healing all who were afflicted with pain, fear, and groaning.



#### The firm foundation programs in the earthquake areas

I did not expect when the ground shook, the buildings collapsed, and more than 50,000 people died in a few seconds, that God would use us to bandage wounds, heal the broken, console the grieving, and be the refuge and white hand for thousands of afflicted families in various

areas of destruction. But the greatest blessing was the help of 61 children to regain their studies and semi-normal lives. We, with your participation, will continue this program for the next year 2024 because of the great need to follow up on these children and heal them from trauma.

Jaafar passes by his destroyed house every day, memories come back to what happened eight months ago, when he heard a frightening roaring sound, screaming, and wailing in every direction, and his father was screaming, "Get out now." He carried his younger sister while seeing his father carrying his twin sister and his mother rushing to carry the middle sister, and as soon as they left the house, the entire building collapsed. He thanks God that his family is still alive despite the deep psychological wounds, but he is very sad because five of his friends, with whom he used to spend all day, whether at school or on the sidewalk, playing, laughing, and having fun, not caring that there is something called death, have gone away, never to return, and more than that. His teacher, who lived in the same building and who was his role model, has also passed away. He feels safe being with the rest of the traumatized kids in our school, The Firm Foundation Program, but he needs a lot of care, attention, and love.



### Thank you

As we come to an end, we would like to express our sincere gratitude to our partners and those who have kept us in their thoughts and prayers. Your support has been instrumental in enabling us to continue our mission of serving the underprivileged in Lebanon and Syria, and we are deeply grateful for your generosity and compassion. Your contributions, whether through financial support or prayer, have made a tangible difference in the lives of those we serve. We look forward to continuing to work together to create a better future for so many who lost hope and are deeply wounded.

## Life Events | Deaths

**Betty Kaiser** passed away on October 14, 2023. A private graveside service will be held in December.

**Beth Finster** passed away on September 30, 2023. A Celebration of Life was held on November 13, 2023 at the Thursday Club.

**Daniel Wedge Fox** passed away on September 4, 2023.

**Lou Ray Checkert** passed away on October 30, 2023.



SHINE A LIGHT HANUKKAH SHABBAT DINNER

DECEMBER 8  
6PM  
CHAPEL



Lawrence Family Jewish Community Center JACOBS FAMILY CAMPUS ADL StandWithUs Jewish Federation of San Diego HIVE

**Shine a Light Hanukkah Shabbat Dinner  
December 8, 6pm | Chapel**

The Lawrence Family JCC is hosting a special Hanukkah Shabbat Dinner in our Chapel. Hanukkah, is a historical Jewish holiday in which Jewish people across the globe light candles with the hope of dispelling the darkness in our world. In an effort to engage in interfaith relationships, we have been invited to join with them to share in this celebration. Space is limited so please register on our website or scan the QR code by December 6.