



03/02/2025



Merriman Holt Powell Architects



Jim Powell



John McWilliams



Michelle Carter



Jose Fernandez



Katherine Tees

MHPA Team

Master Plan Committee

Mike Handel (Chair) & Cheryl Moore (Vice-Chair)

Sandy Ballard (Facilities)

Carter Bliss (Facilities)

Alf Halvorson (Senior Pastor)

Amy Harrington (Land Acquisitions)

Christyn Knoop (Children & Former Staff)

Michael McCormack (Generosity & Young Adult)

Bill McDonald (The Scouts)

Josie Pielop (Youth & New Members)

Mary Shindler (Neighbors)

Marcus Vajdos (Staff)

Regina Verona (BPC)

Master Plan Process

What is a Master Plan?

Steps Completed

Project Kick-Off	June 4, 2024
Master Plan Committee Meetings	Every two weeks
Ministry Interviews	July & August 2024
Houston Benchmark Tour	September 26, 2024
Site & Building Analysis	August & September 2024
Dallas Benchmark Tour	October 17, 2024
Gaming Session	December 18, 2024
Design Concepts	January 2025
Session Presentation	January 24, 2025
Town Hall #1	March 3 rd , 2025

Next Steps

Develop Final Master Plan	March - July 2025
Develop Project Phasing Plan	March - July 2025
Identify Phase One Plan	March - July 2025
Town Hall #2	September 2025

Possible Next Steps

For a Phase One Project

Fundraising Feasibility Study	September – December 2025
City Specific Use Permit Process	September 2025 -
Phase One Project Design Phases	January 2026 – March 2027
Capital Campaign	Spring 2026
Phase One Project Permit Process	March 2027 – July 2027
Construction (+ / - 18 months)	August 2027 – March 2029
75 th Anniversary	2030

Interviews — 16 Groups

- Adult Discipleship
- Caring Ministry
- Children's Ministry
- Facilities
- Food Service
- Fuente & BPC
- Little School
- Music Ministry
- Outreach
- Relationships
- Scouts
- The Antioch Partners
- Worship
- Yellow School
- Youth
- Young Adult

Interviews — Themes

- Optimize space utilization by making spaces support multiple uses over time.
- 400 or 500-person multi-purpose room that can be used for Fuente/BPC worship, lectures, conferences, and events.
- Clear circulation, with a prominent Front Door and Welcome Center.
- Align the enrollments of Yellow School and Little School to optimize capacity.
- Additional space for classrooms for all ages.
- Consolidate staff offices.

Future of Church in Society

- **Belonging**

With the secularization of society, people need to belong before they can believe. Churches that build trust will thrive.

- **Importance of the Next Generation**

The current trends suggest 35 million youth will leave the church by 2050, unless churches are clear about Jesus, are committed to formation, care about their members, and reach out to future generations. Churches that provide a safe place to ask questions and grow spiritually will thrive.

- **Outreach**

Millennials and Gen Z are greatly concerned about the planet and the divisiveness of our world. Churches that partner with others to alleviate human need and share Jesus in a non-judgemental way will thrive.

MDPC is Thriving!

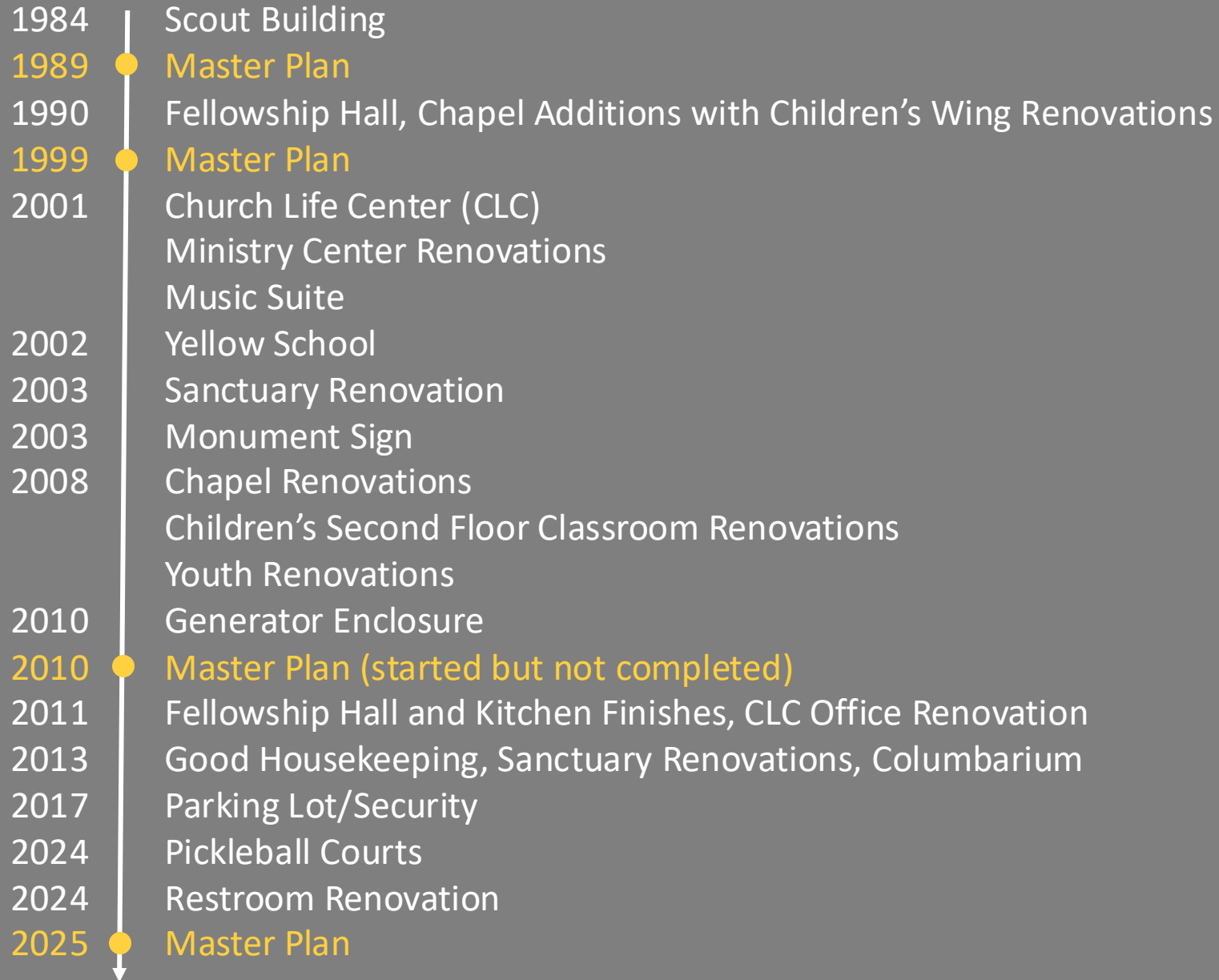
- **Membership has grown from 3,000 in 2015 to 4,400 today.**
- **Average worship attendance has grown from 1,000 in 2015 to 2,400 today, including online attendance.**

Future of MDPC

- **MDPC is a leader in Houston.**
 - Mega Cities and Why Cities Matter
 - MDPC is near the center of Houston and can play an important role in evangelism.
- **MDPC is a leader in ECO**
 - ECO's Goal to Plant 1,000 Churches by 2030.
 - Church Planting vs Multiple Congregations under MDPC's Umbrella
- **MDPC is a teaching church.**
 - Discipleship focus and Residency Program

Site / Building Analysis

Timeline of Projects

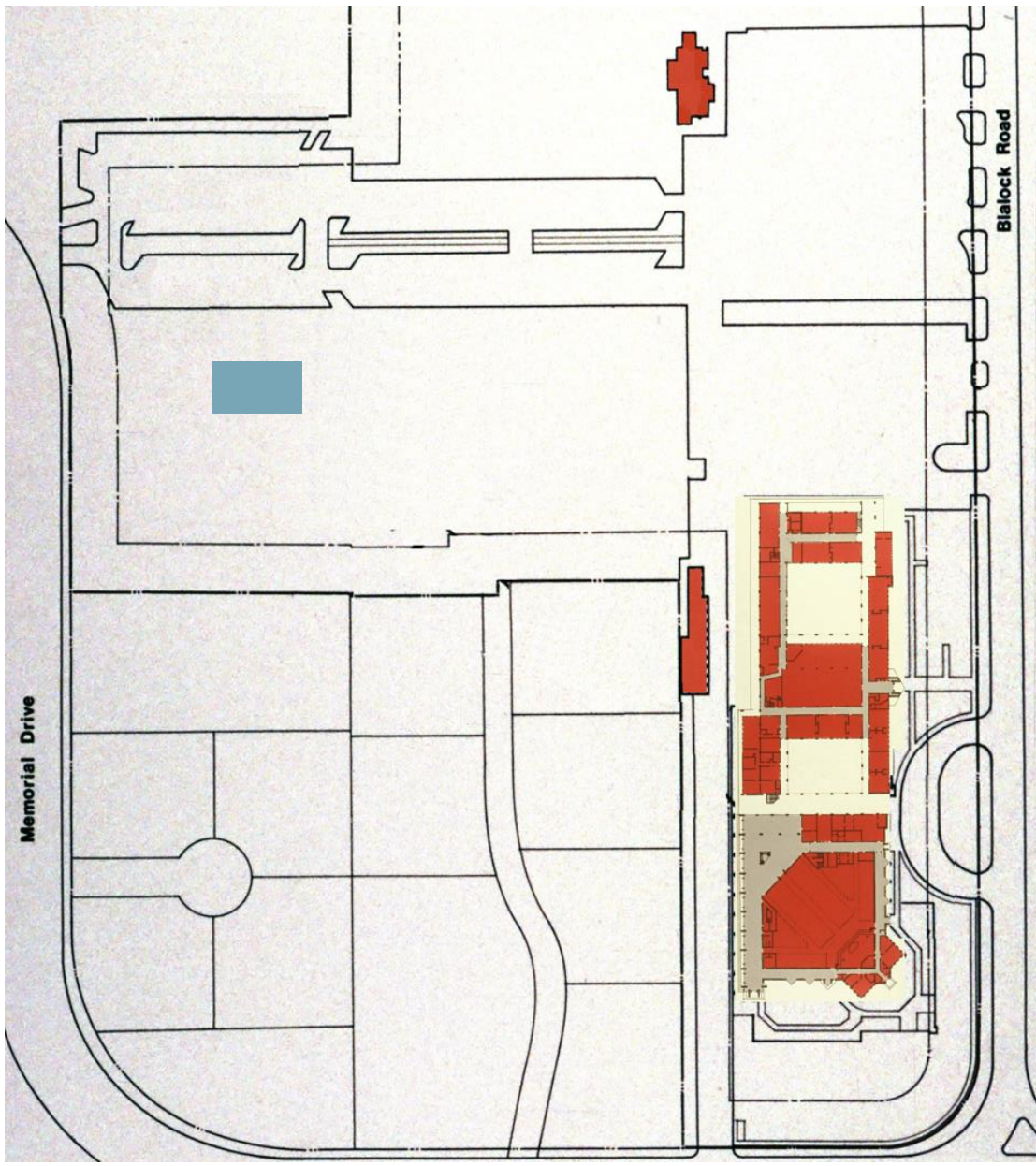


1984	Scout Building
1989	● Master Plan
1990	Fellowship Hall, Chapel Additions with Children's Wing Renovations
1999	● Master Plan
2001	Church Life Center (CLC) Ministry Center Renovations Music Suite
2002	Yellow School
2003	Sanctuary Renovation
2003	Monument Sign
2008	Chapel Renovations Children's Second Floor Classroom Renovations Youth Renovations
2010	Generator Enclosure
2010	● Master Plan (started but not completed)
2011	Fellowship Hall and Kitchen Finishes, CLC Office Renovation
2013	Good Housekeeping, Sanctuary Renovations, Columbarium
2017	Parking Lot/Security
2024	Pickleball Courts
2024	Restroom Renovation
2025	● Master Plan

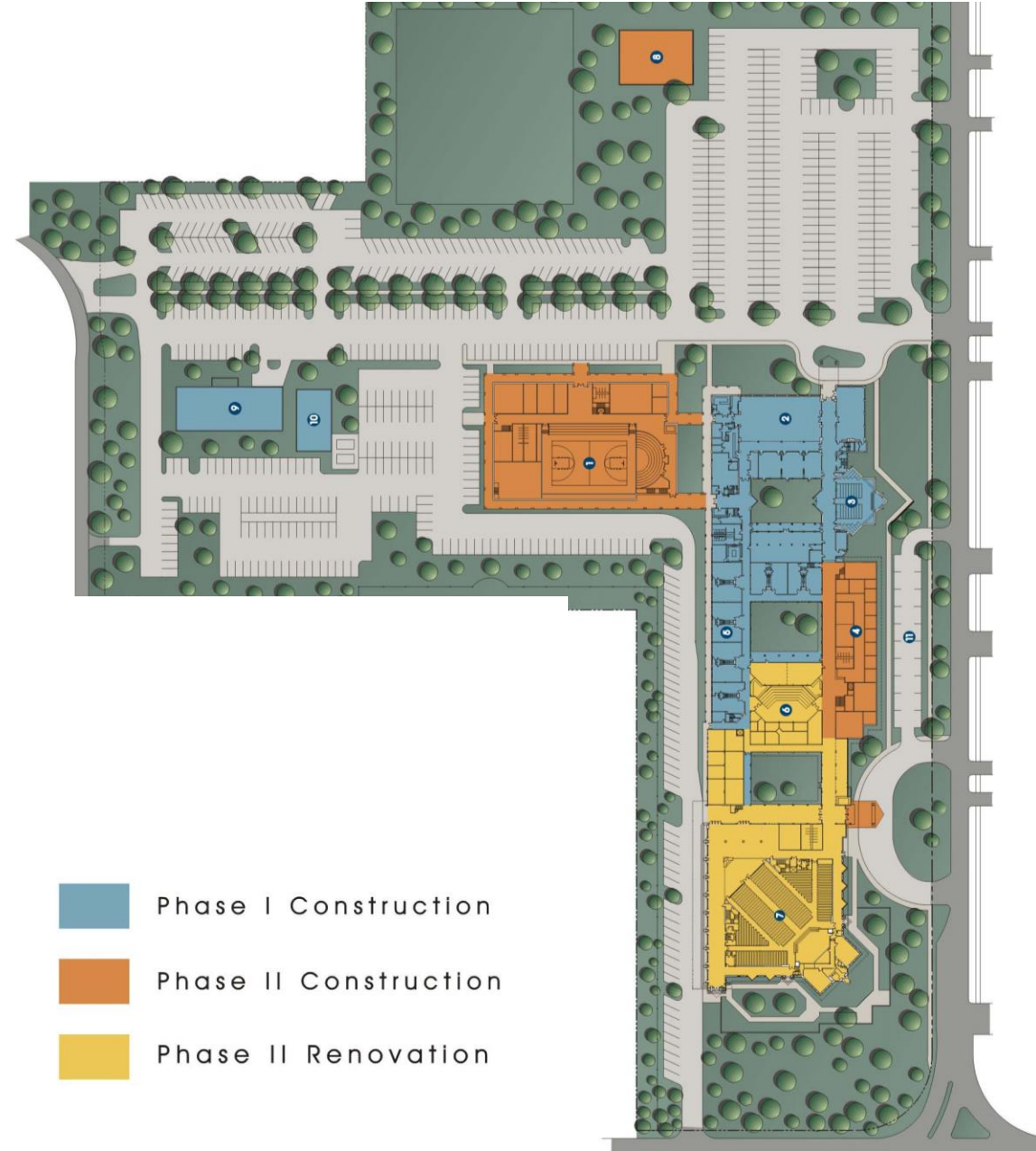
Timeline of Projects

26 years since last Master Plan

24 years since last major addition

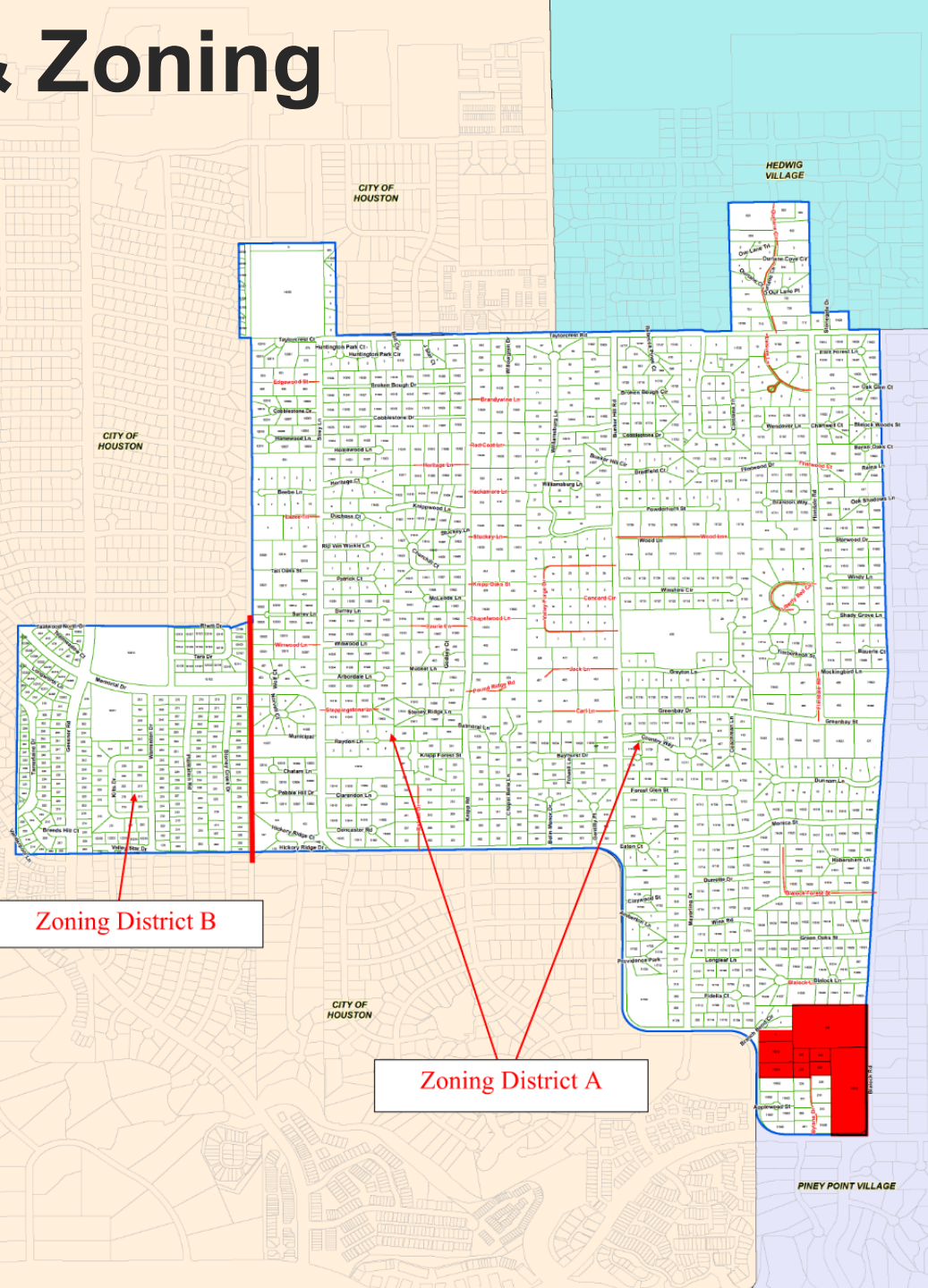
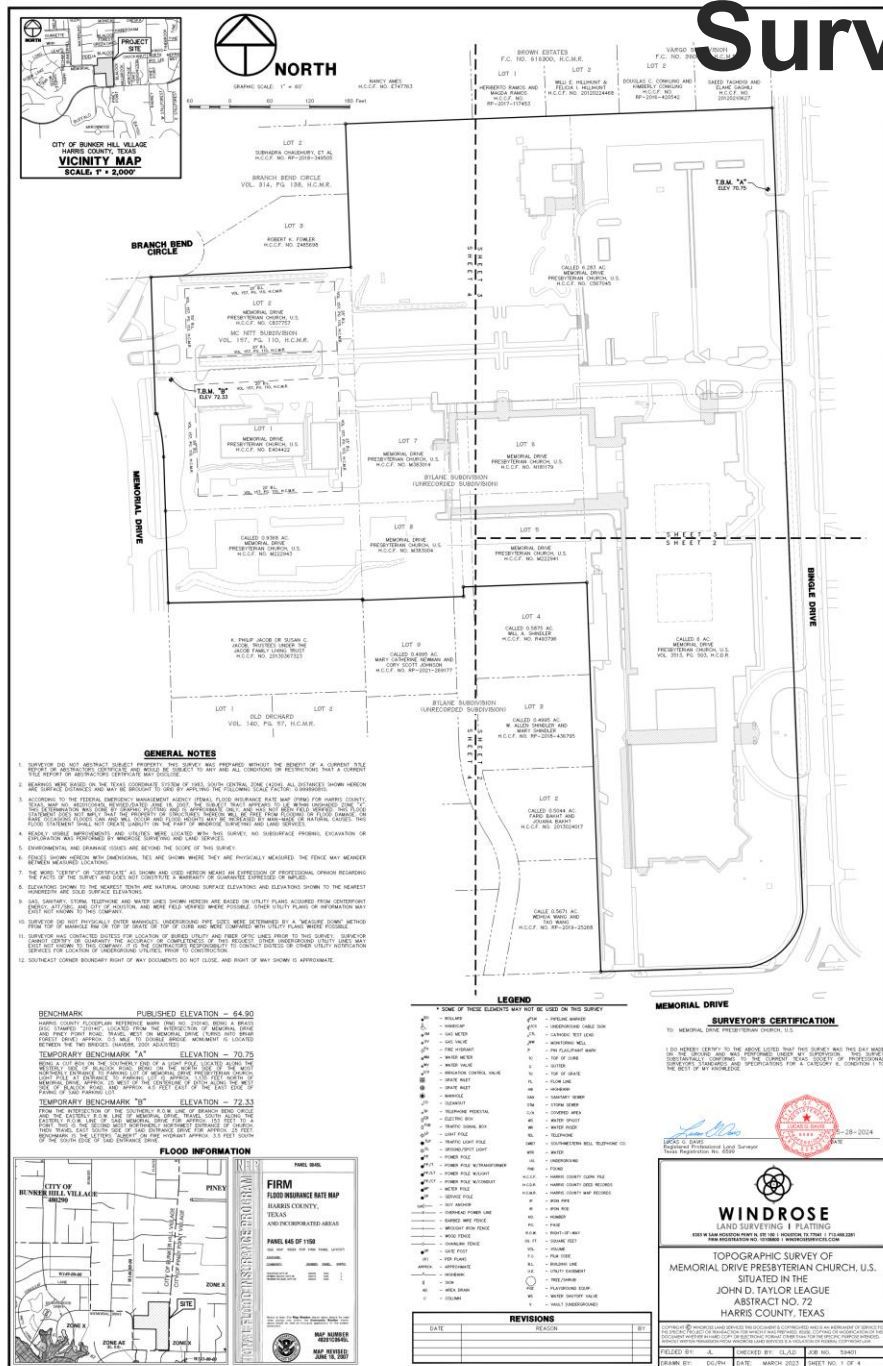


Campus prior to 1989 Master Plan

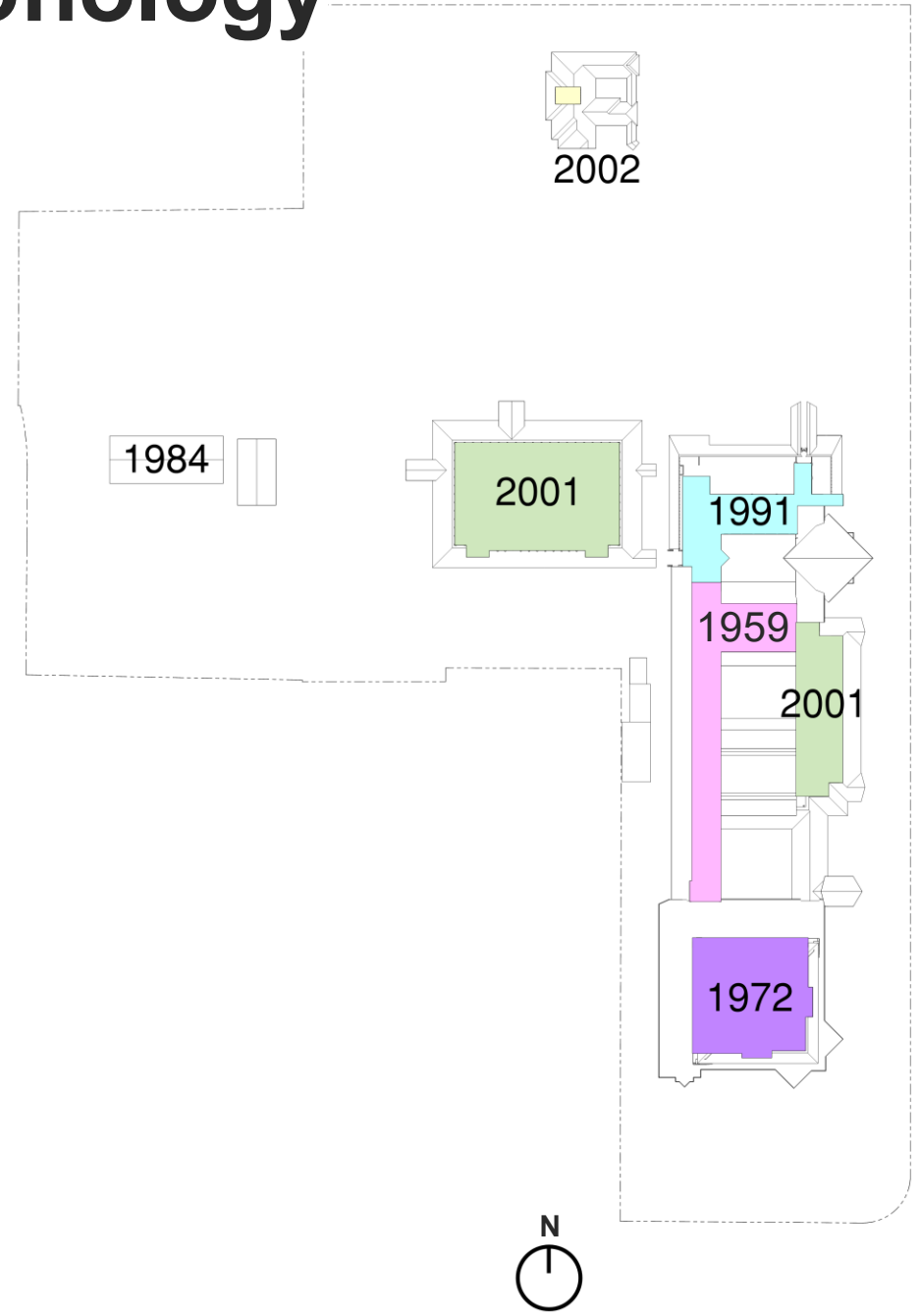
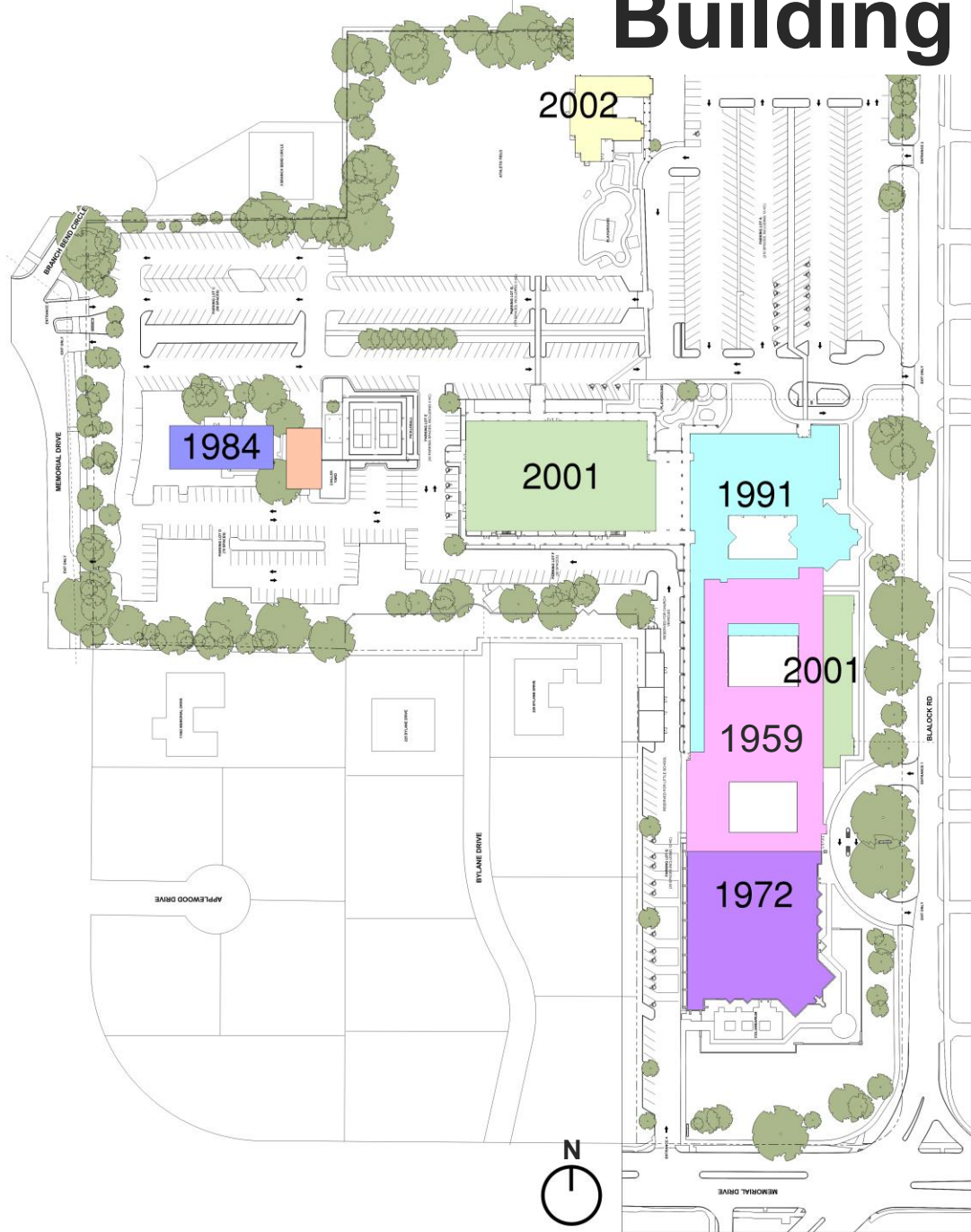


1999 Updated Master Plan

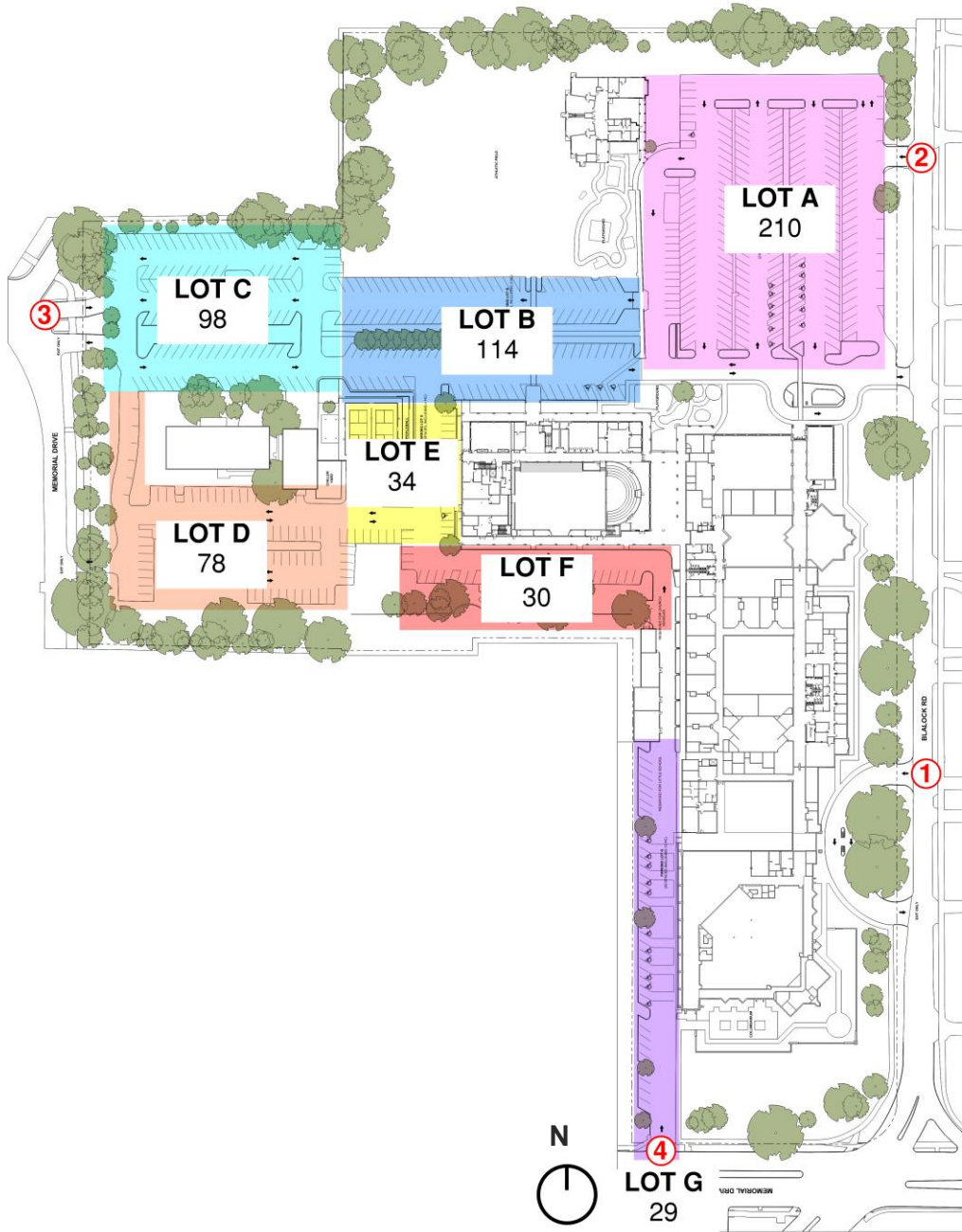
Survey & Zoning



Building Chronology



Planned Parking



Current Parking Spaces: **593 Spaces**

Code Minimum: **379 Spaces**

1.0 space for every 5 fixed seats Sanctuary & Chapel

Sanctuary Code Capacity: 1,594 (18" per person)

Chapel Code Capacity: 299 (18" per person)

Practical Parking Required: **520 Spaces**

$1,088 \text{ Total People} / 2.2 = 495 \text{ Cars}$

Inefficiency factor .05 = 520 Spaces

Overflow Parking:

Second Baptist Memorial Campus

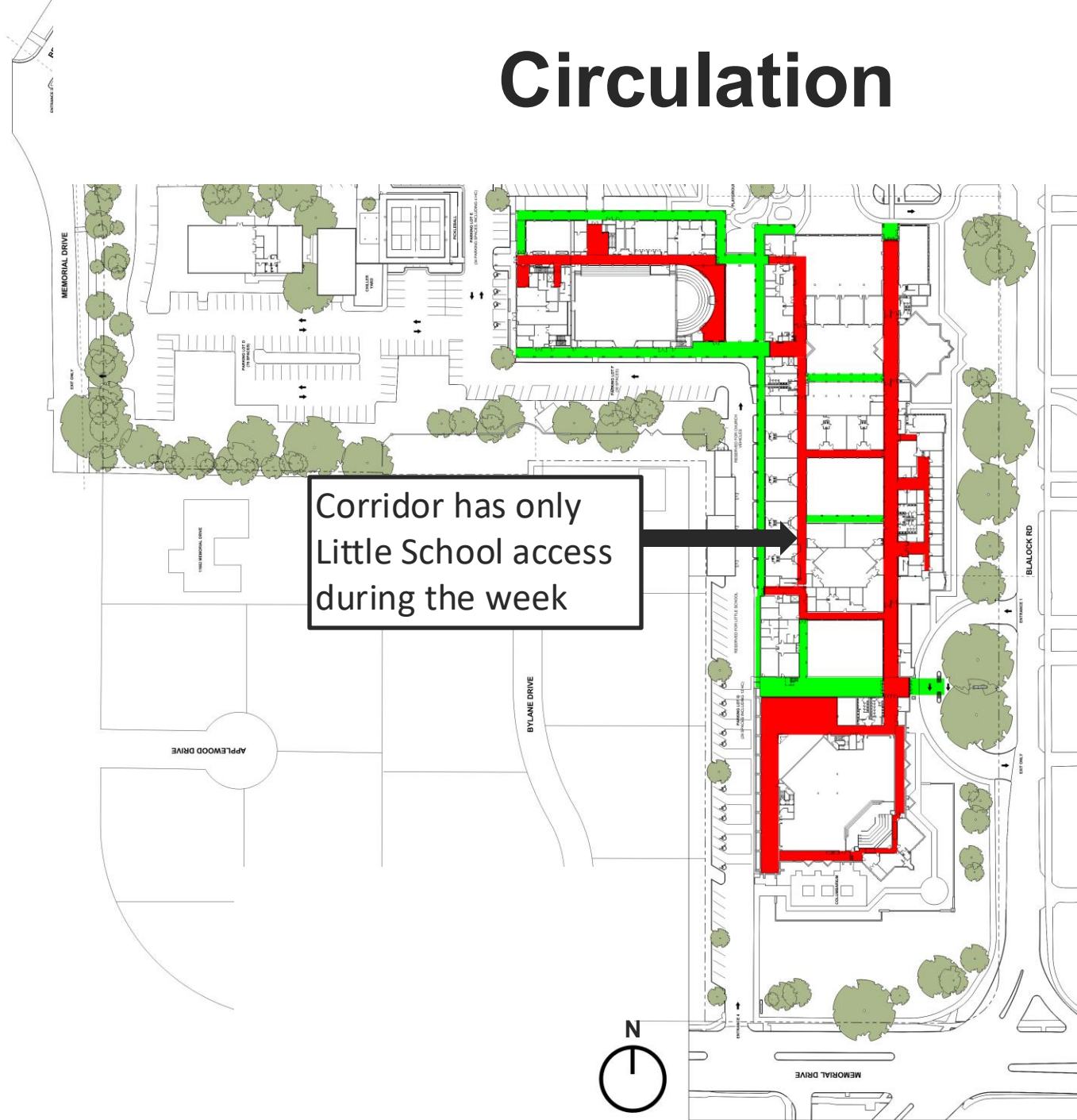
Kinkaid

Frostwood Elementary

Memorial High School

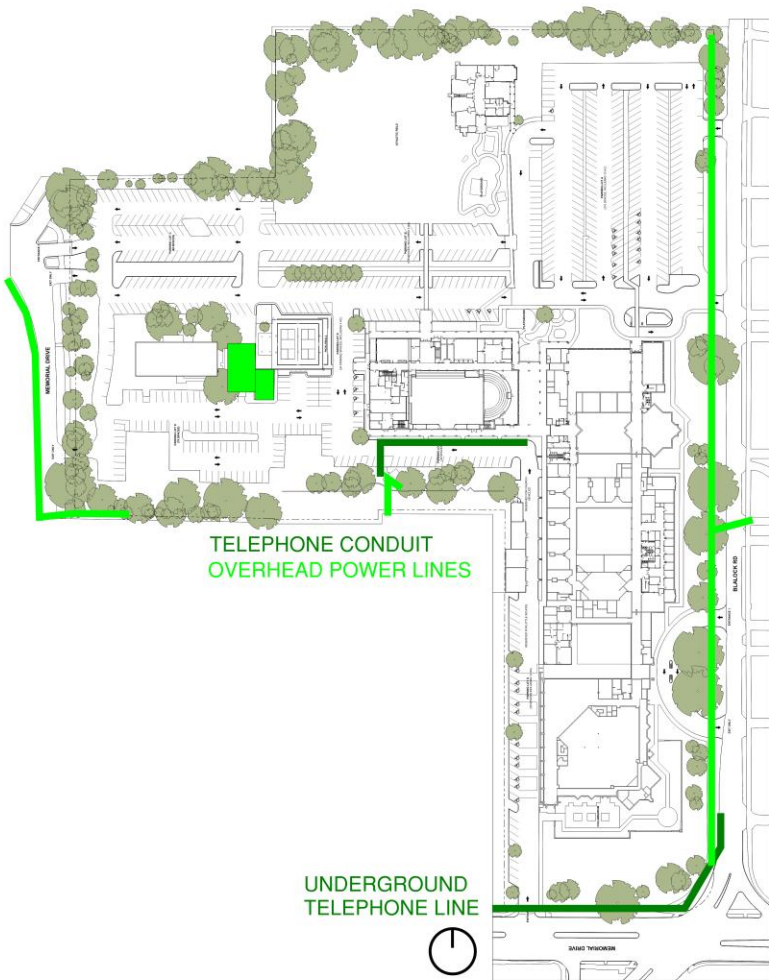
Improve Traffic Flow

Circulation

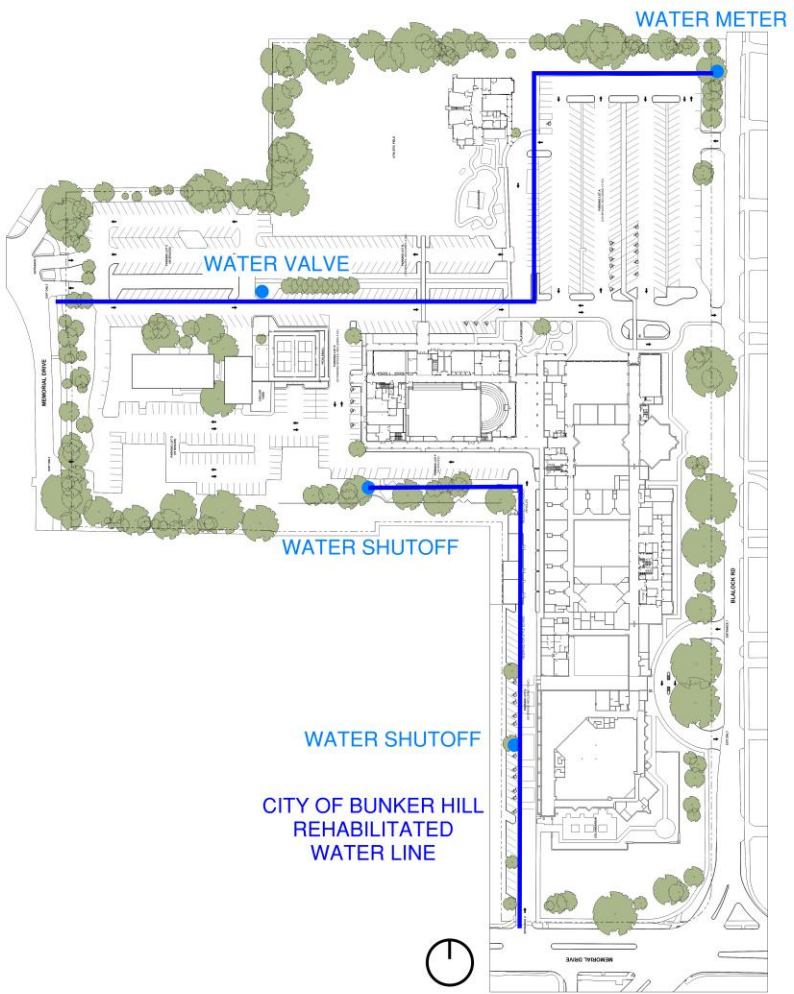


- Covered Walkway
- Conditioned Corridor

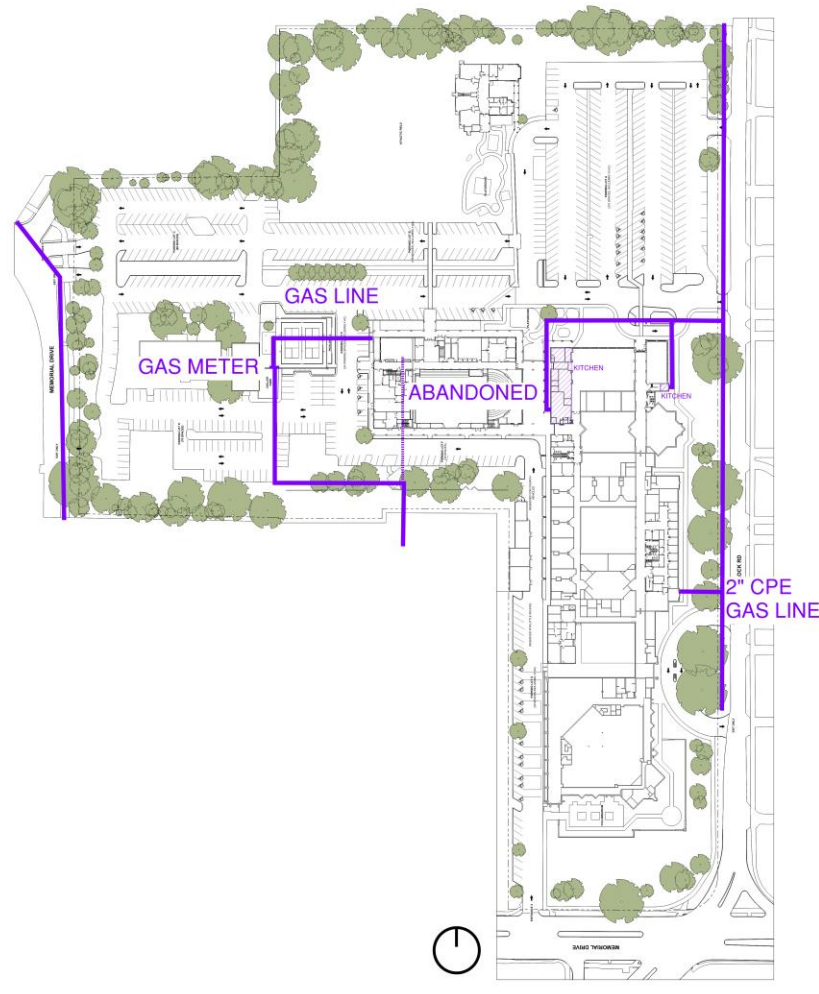
Utilities



Electrical

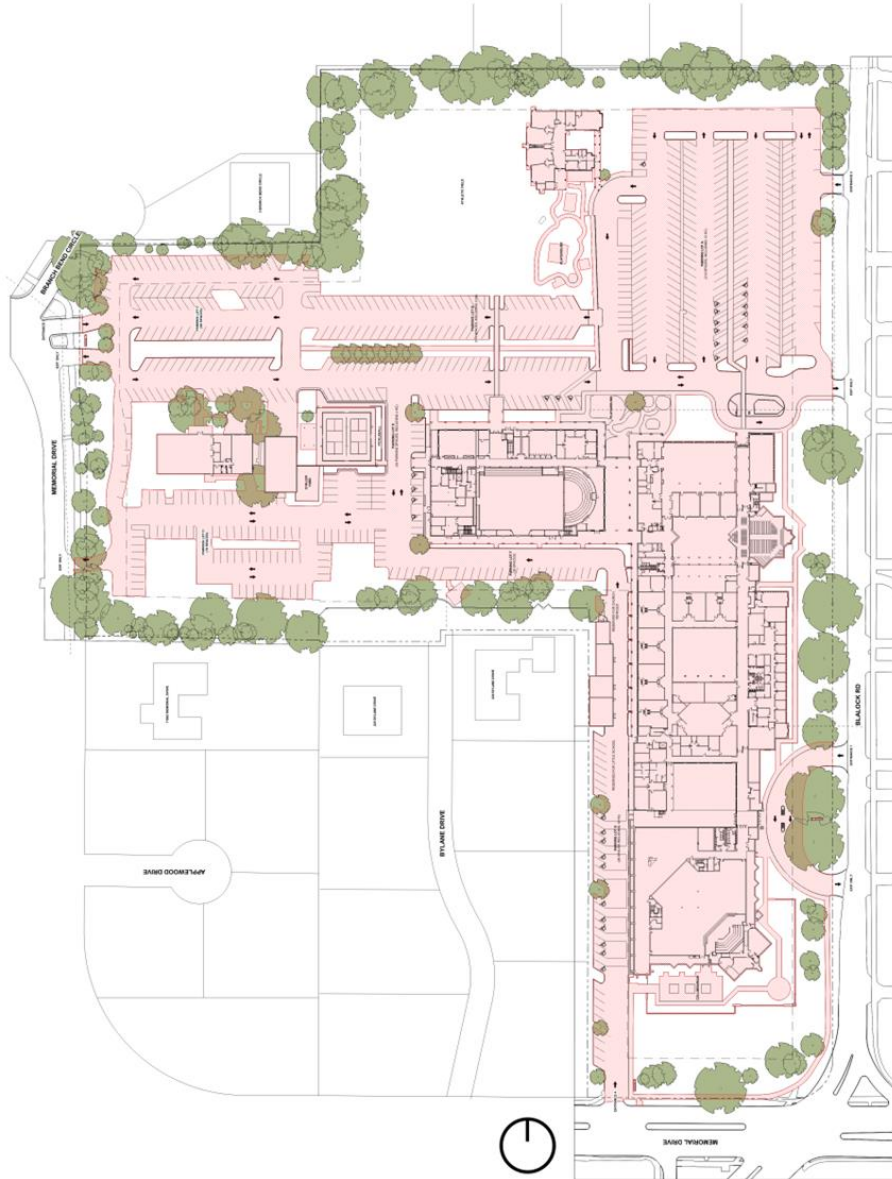


Water



Gas

Impervious Coverage (Drainage)



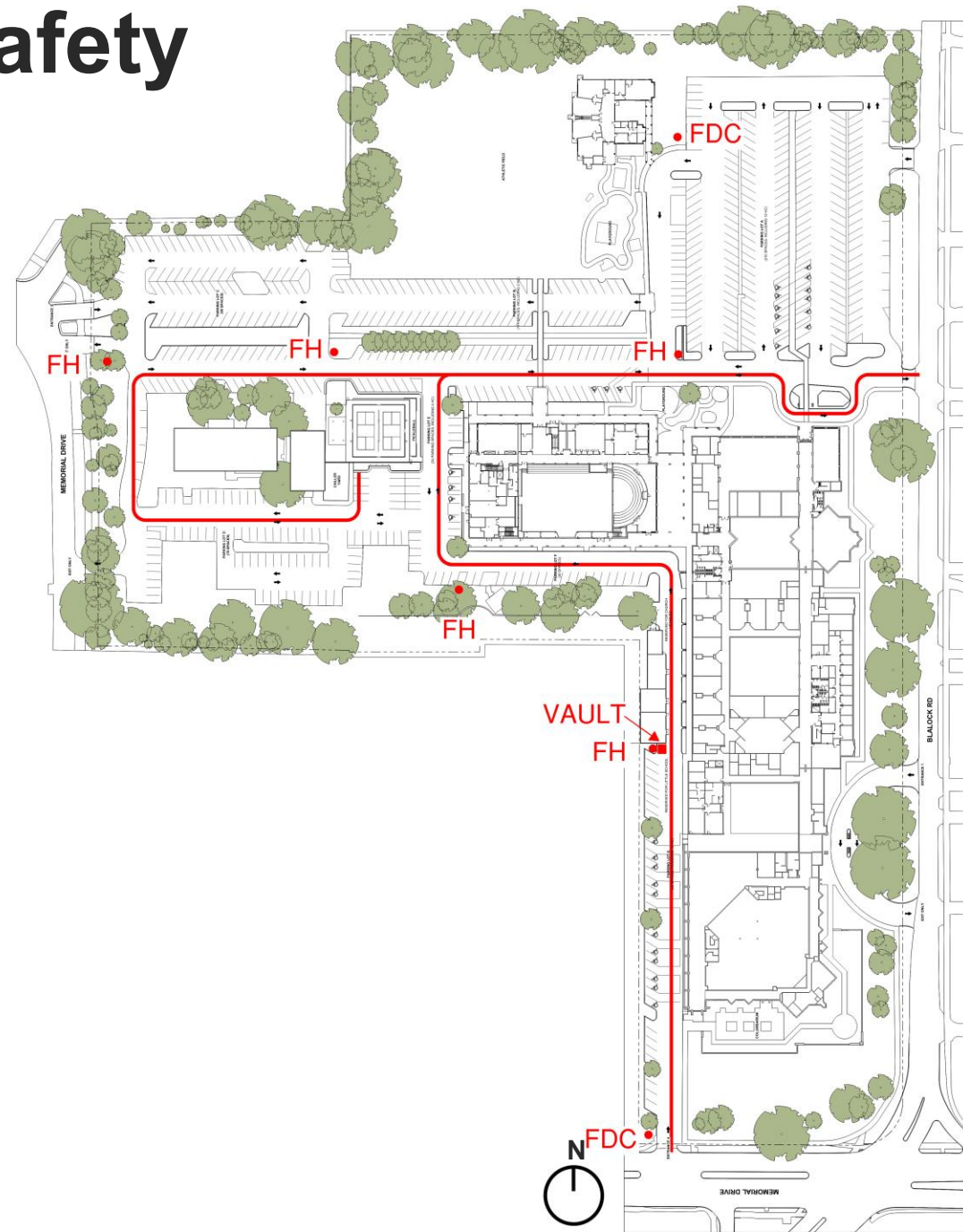
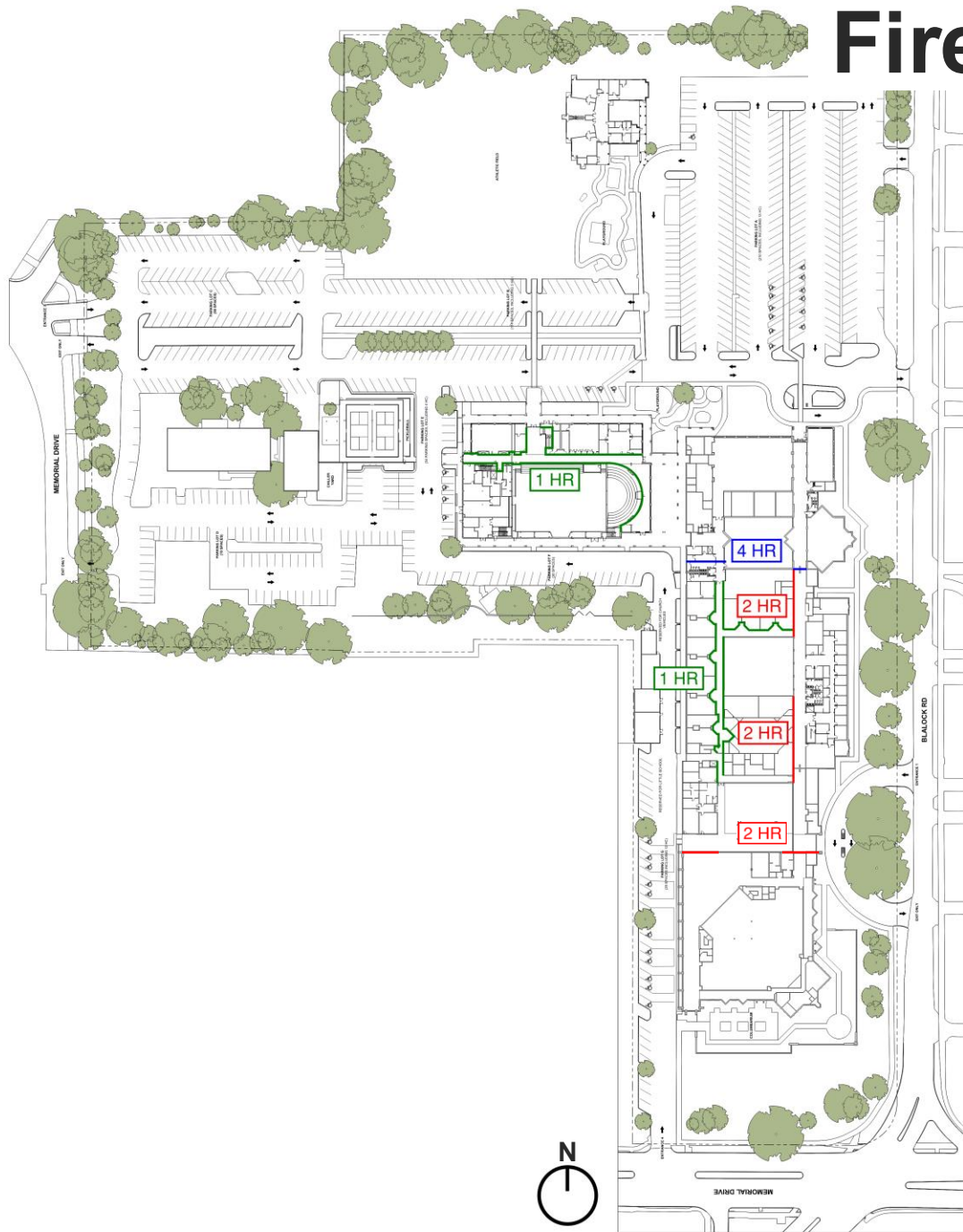
Impervious Coverage
Net Zero Change

Basement	16,232	8%
First Floor	134,651	69%
Second Floor	45,779	23%
Total	196,662	100%

Gross Air-Conditioned Space
Room to Build Second Floor and Basement

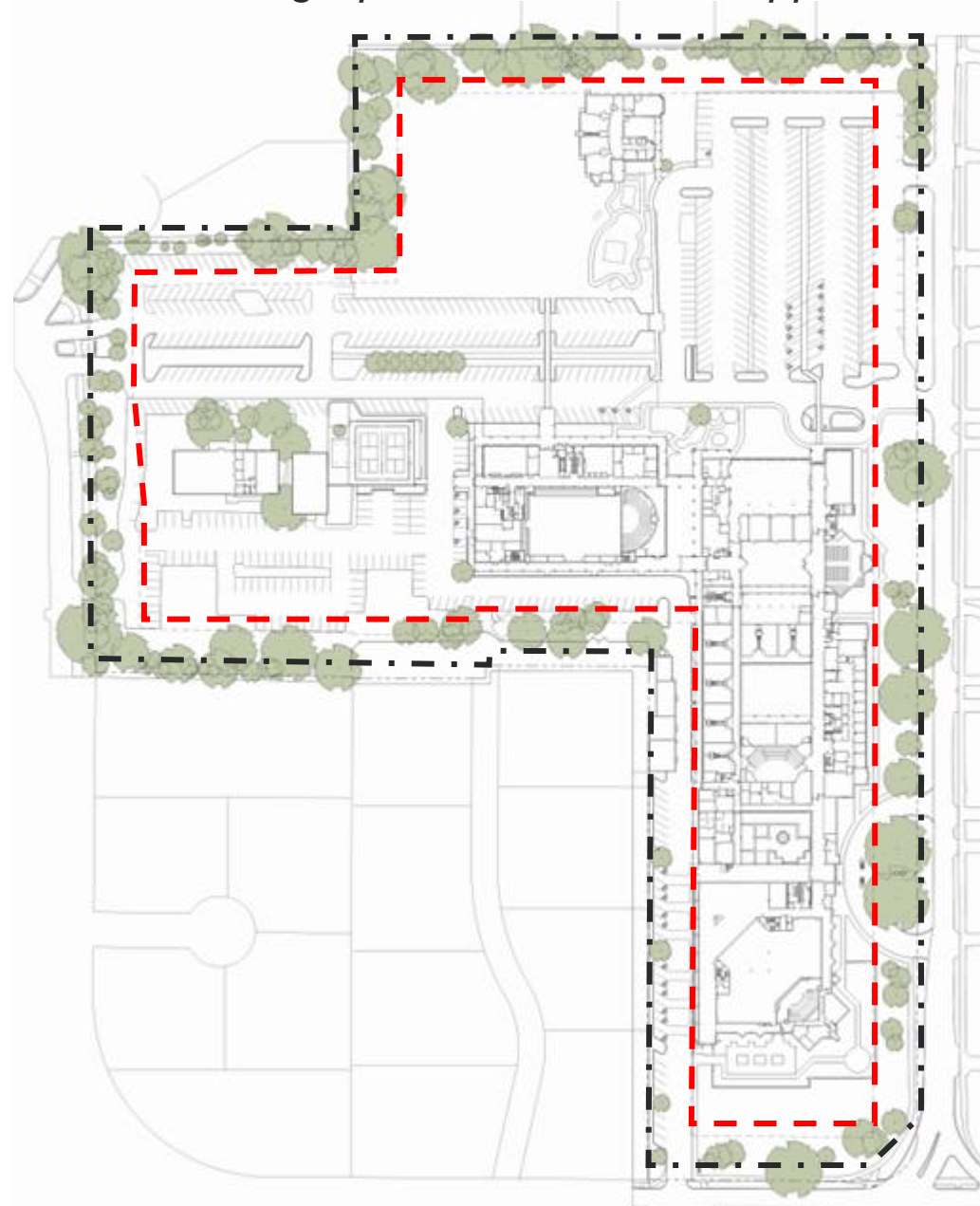
**Goal: Net Zero Change in
Coverage so Storm Detention
is not required.**

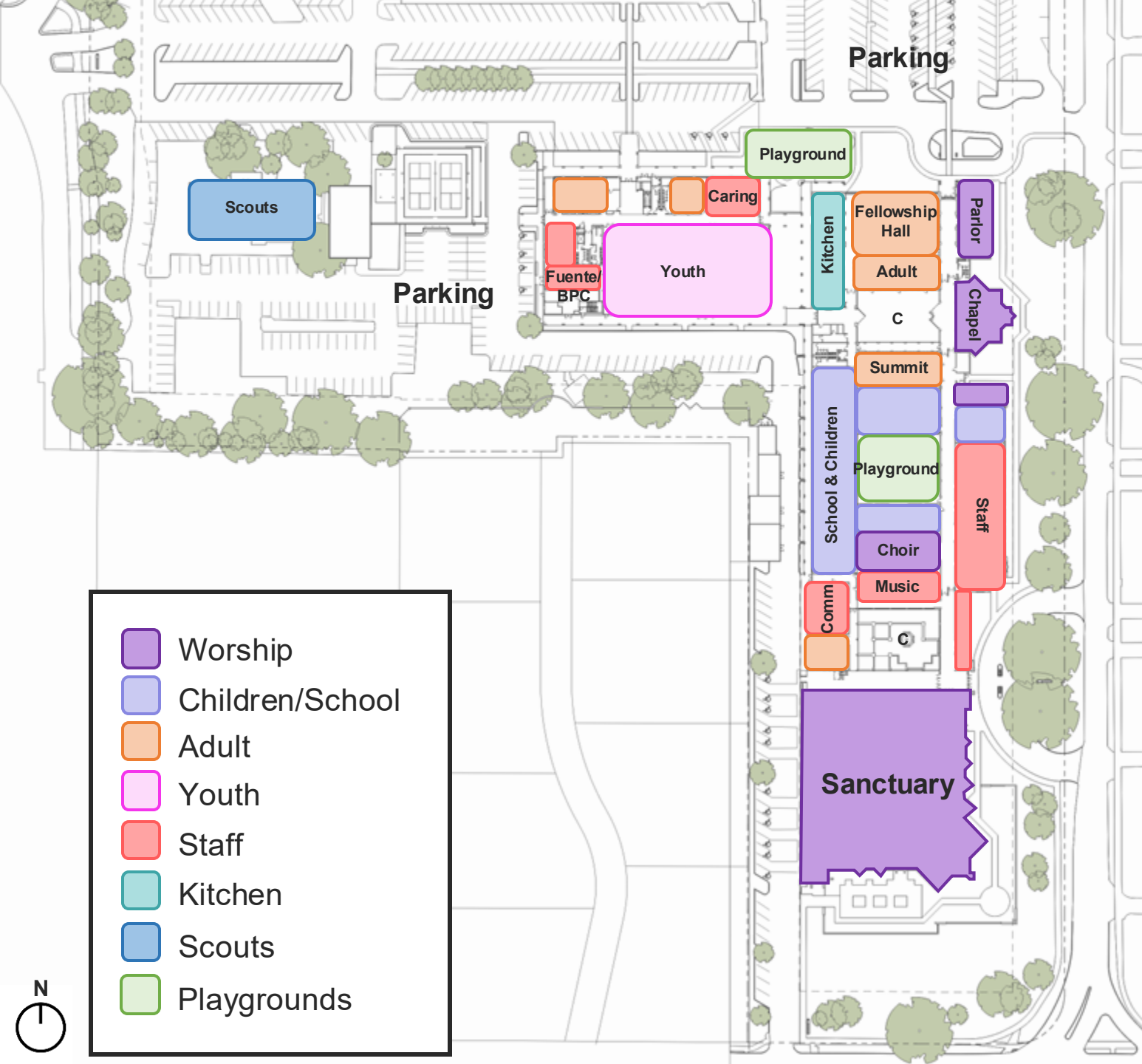
Fire Safety



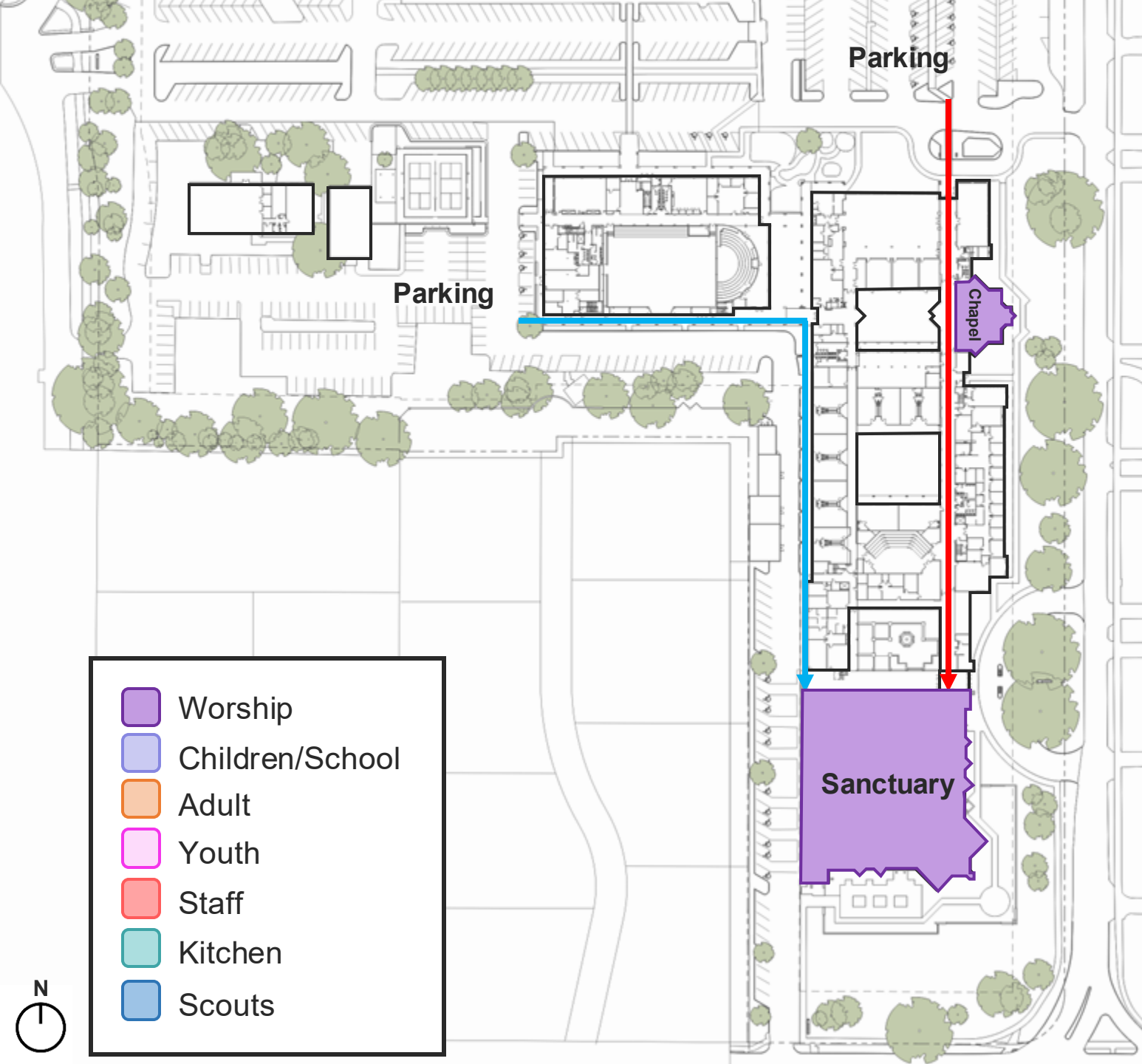
50' Building Setbacks

Pending Specific Use Permit Approval





Existing Campus Ministry Areas

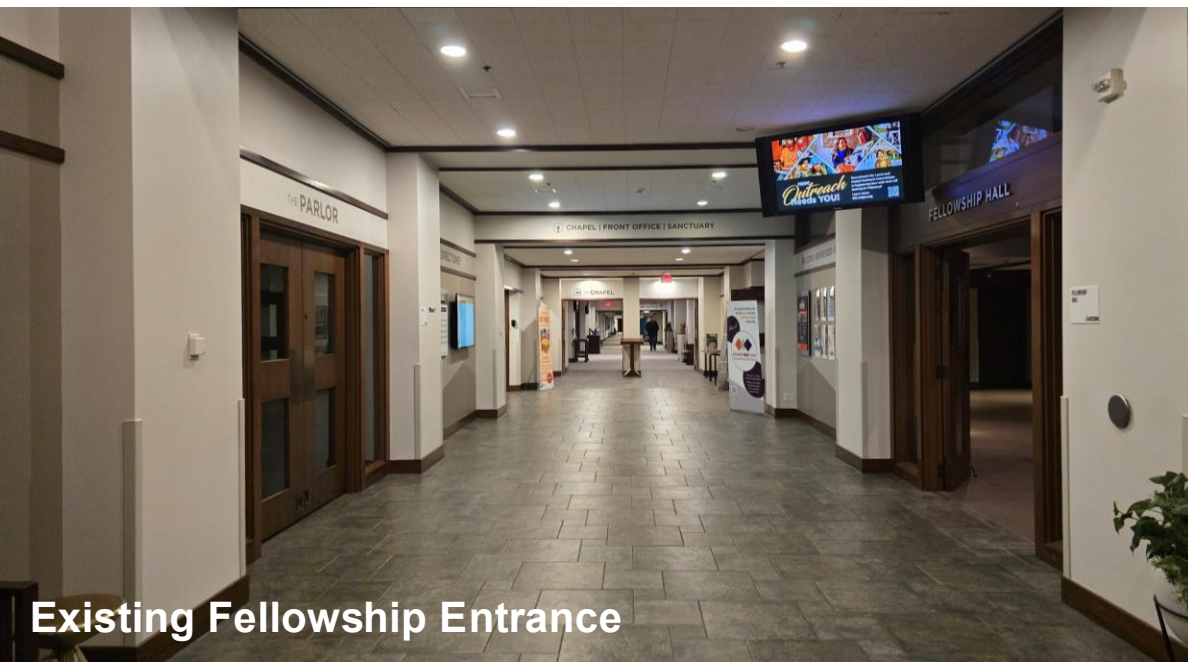


Challenge / Opportunity 1:

The Sanctuary is far from parking.



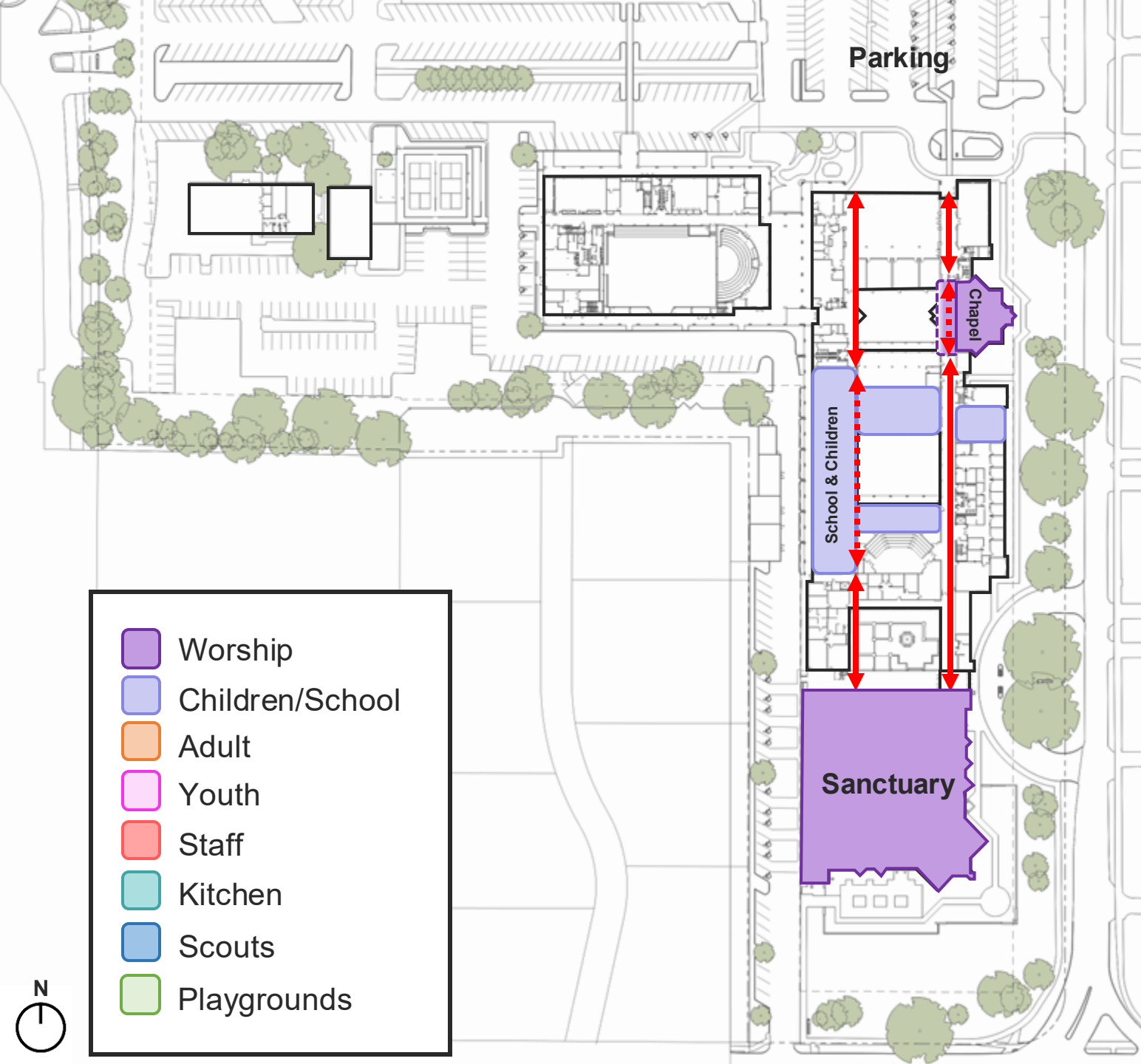
Existing Sanctuary Entrance / Lobby



Existing Fellowship Entrance

Challenge / Opportunity 2:

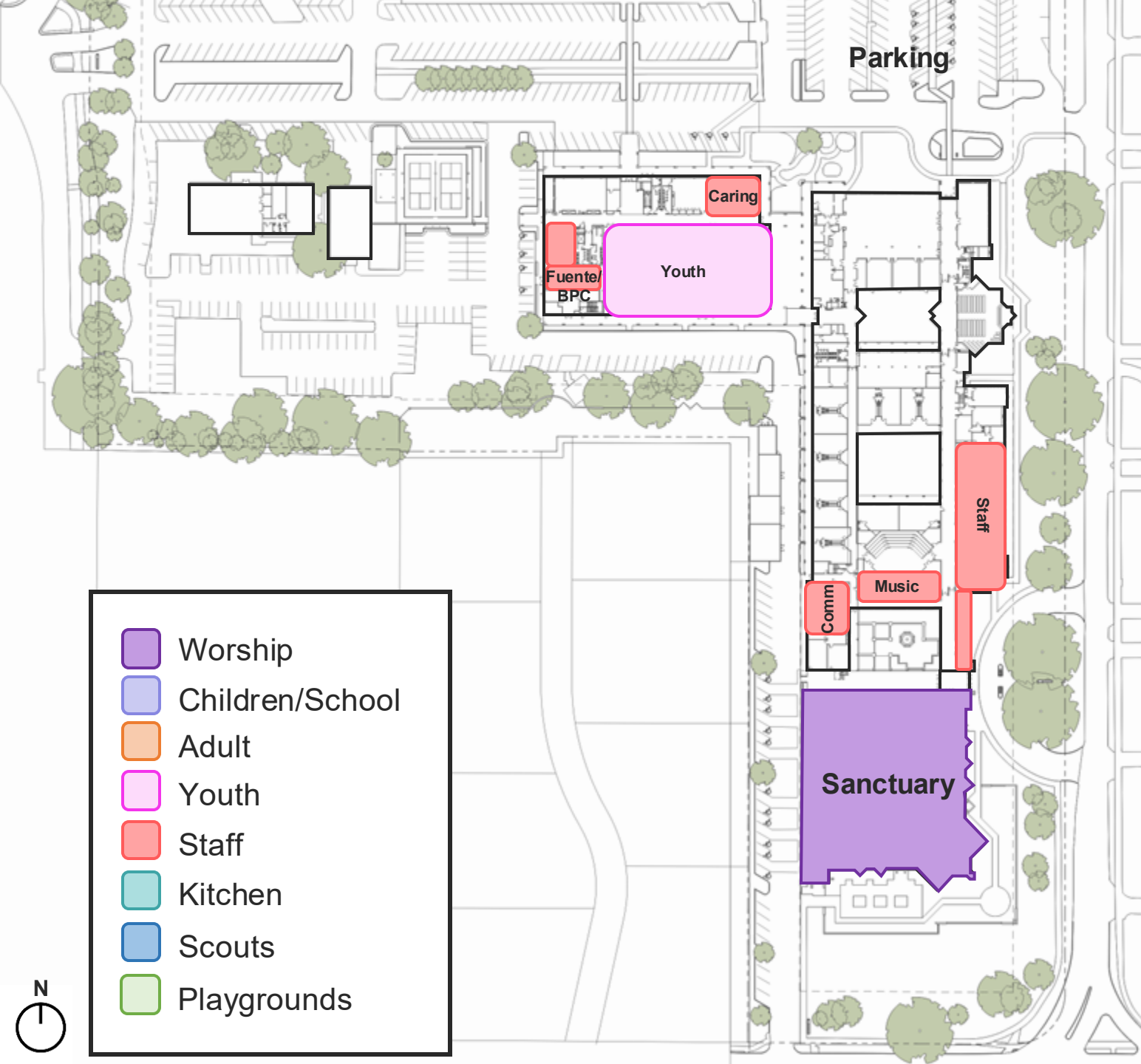
MDPC does not have a Welcome Center or clear Front Door.



Challenge / Opportunity 3:

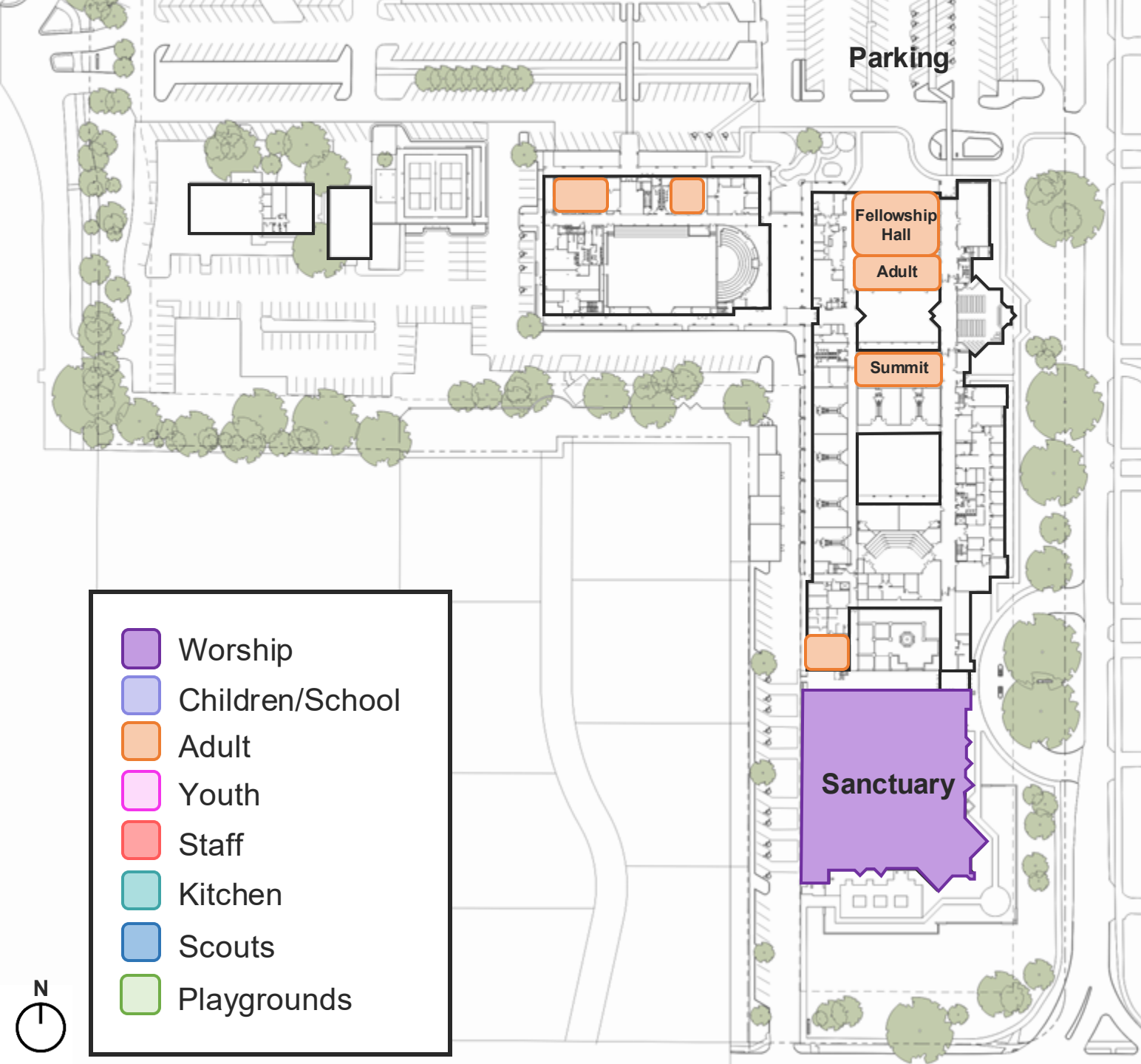
The Little School's security shuts down one of the two main corridors, and the Chapel's overflow area blocks the other corridor.





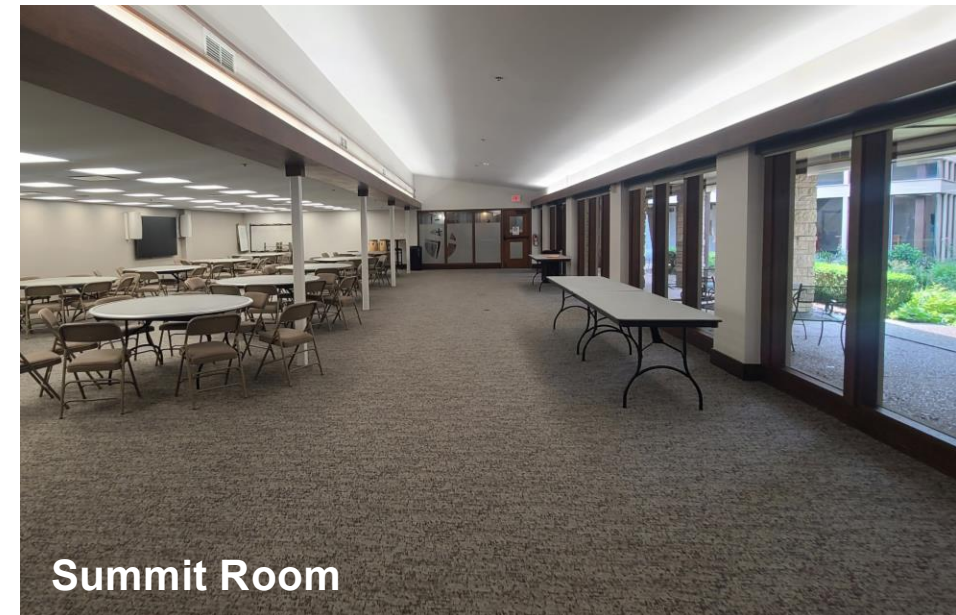
Challenge / Opportunity 4:

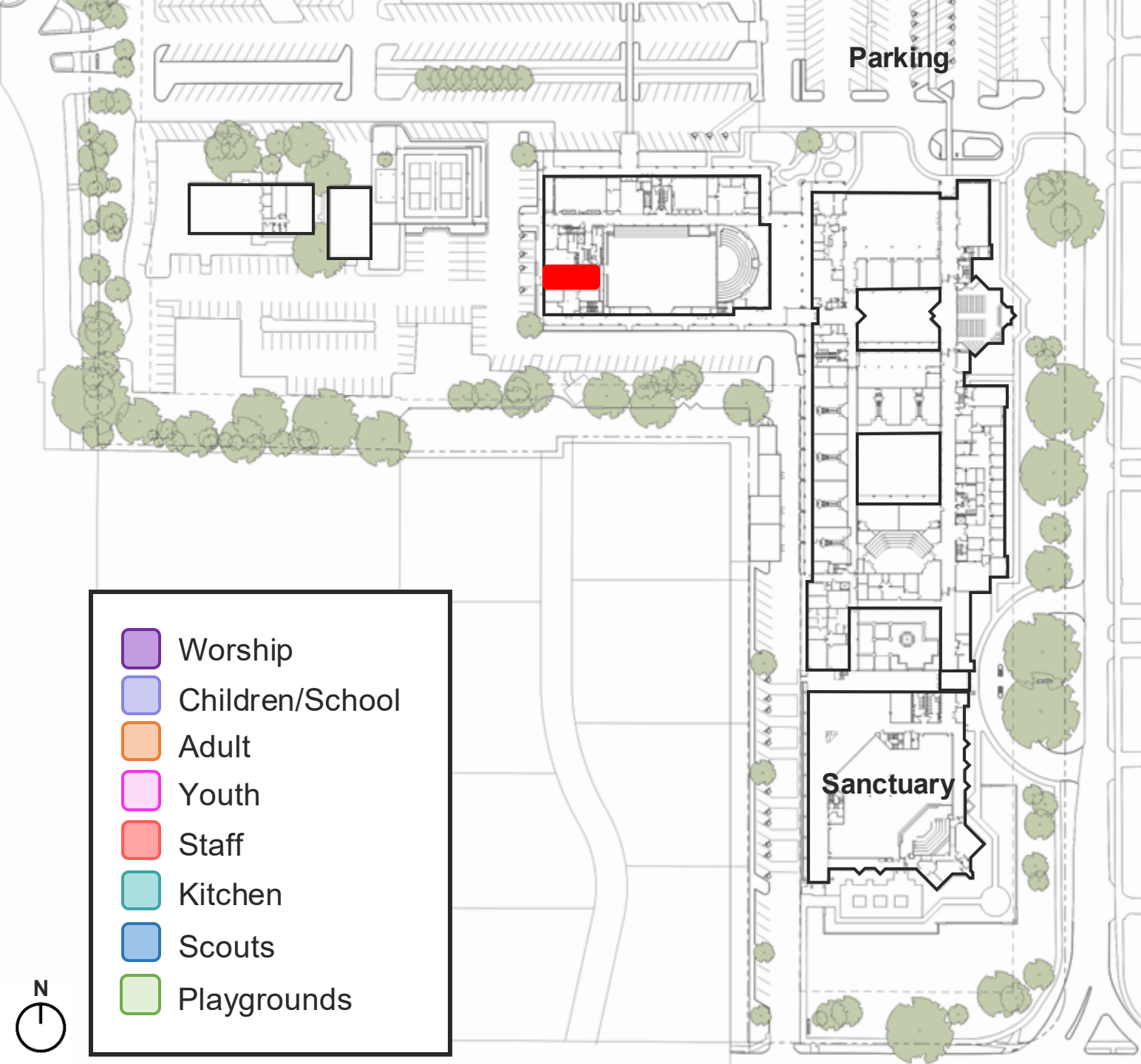
Admin/Staff Offices are spread out across campus and take up valuable space near the Sanctuary and CLC spaces intended for Youth.



Challenge / Opportunity 5:

Adult Classrooms are spread out and far from the Sanctuary

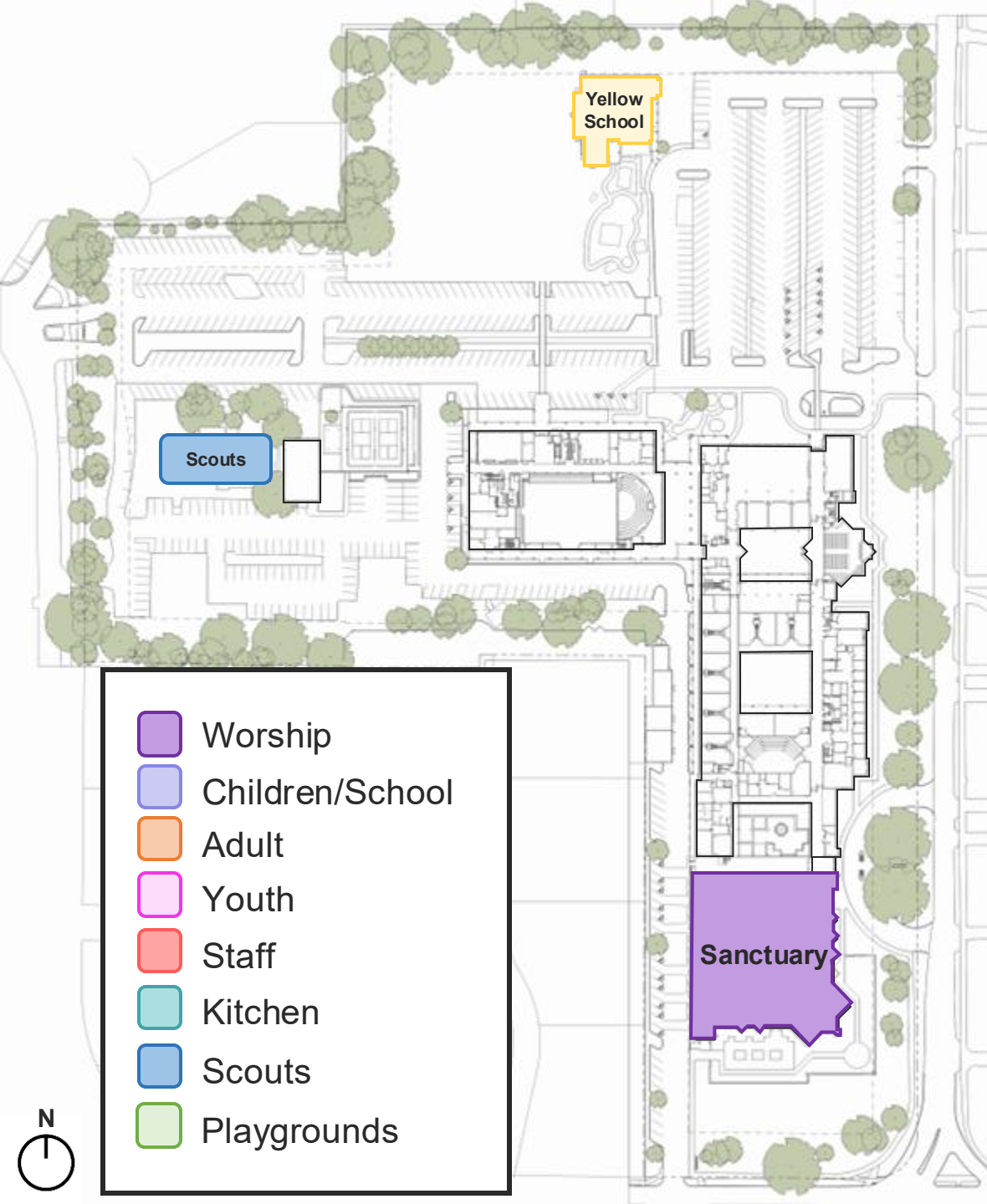




Challenge / Opportunity 6:

The Food Pantry has outgrown their current location on campus. The slab is cracking due to the excessive loads above the basement.





Challenge / Opportunity 7:

The Scout House and Yellow School are remote and therefore are not multipurpose, or utilized to their full potential.

Facilities Tour



Benchmark Tours

Houston

Memorial Church of Christ
Houston First Baptist – The Loop
Houston First Baptist – Cypress

Dallas

Highland Park Presbyterian Church
Highland Park United Methodist Church
Watermark Community Church



Houston's First Baptist - Cypress



Memorial Church of Christ



Houston's First Baptist – The Lawn @ The Loop



Houston's First Baptist



Watermark Community Church



Highland Park United Methodist Church (Great Hall)



Highland Park Presbyterian Church

Master Plan Goals

MDPC Strategic Goals through 2027

In addition to our previous goals, we affirm the four central Strategic Guiding Priorities below that fuel the advancement of The Great Commandments (Matt. 22:34-40) and The Great Commission (Matt. 28:18-20) with our head, heart, and hands.



CONNECTION/ COMMUNITY

Show after the example of Jesus that people matter more than programs

- A) Koinonia and Team Building (Train, align, release laity and staff)
- Offer and live into appropriate vulnerability/sharing opportunities, making time for the ones Christ came to save. Belonging often happens before believing in the 21st Century.
 - Focus our Leadership and Staff Annual Retreats on volunteerism, healthy teams, leadership succession, and ongoing teaching and training to enhance alignment and fruitfulness through 2027.
 - Onboard new and existing staff and lay leaders in our articulated culture, DNA, and being an ideal teammate for our programs and mission.
- B) Leadership Succession (laity and staff)
- Provide off ramps and on ramps to our servant leaders so that all the areas of MDPC's life facilitate leadership development, appropriately honor sacrificial service, and replenish new blood into our ecosystem for sustainable and faithful ministry.



EVANGELISM/ CONVERSATIONS

Know God's story through Jesus personally

- C) Grow Alpha participants, testimonies of transformation in worship and online, and believer baptisms by 5% annually, so that more God moments become God movements.
- D) Take 75 staff and members through "The Witnessing Disciple" or equivalent annually, so we can put the Great Commission principles into greater practice.
- E) Partner with Steiger International to attend, practice, and mature in large & small Gospel sharing events & spiritual conversations in Houston and beyond.
- F) Create new avenues to incorporate Next Generation (Children with Parents, Youth, & Young Adult) as well as Multi-cultural congregations more fully and vibrantly.



FORMATION/ DISCIPLESHIP

Grow in Jesus and His story

- G) Align and coordinate intentional Christian Formation Pathways (especially relying on the wisdom and commitment of our senior generation):
- For all ages and stages thru stair-stepped classes
 - Small groups
 - MDPC Institute
 - Events
 - Speakers
- H) Take a leadership role in pioneering and sustaining a Teaching Church Internship Program with ECO Seminary (and/or others) by equipping emerging leaders from and for the wider church and MDPC's own pipeline needs.



SERVICE/ OUTREACH

Go together to love generously

- I) Equipping the Saints/Priesthood of All Believers/Volunteerism
- Remake our Policies & Procedures so that our committees have 'At Large' members; offer a Spiritual Gifts Class annually to expand engagement of mutually life-giving & life-changing placements; and re-size Session to collaborate with Deacons in expanding our Eph. 4 '5-fold ministry' balance & effectiveness.
 - Have 75 staff & lay go through The Equipped Disciple or equivalent annually.
 - Put 100+ fresh (new or re-engaged) volunteers yearly in the 'game,' inside and outside our walls.

Master Plan Committee Charter

Looking forward to the next 25 years, develop a plan to provide campus improvements that reflect MDPC's Strategic Guiding Priorities to advance The Great Commandments and the Great Commission through the Four Pillars of Community, Evangelism, Formation, and Outreach.

Across The Four Pillars

- As good stewards of the campus, **make spaces to support multiple functions with improved intuitive technology**, maintenance-friendly materials, energy efficient systems, necessary infrastructure updates and flexible furnishings.
- **Optimize the development potential of the church's property** by considering multi-story structures, while respecting MDPC's architectural heritage and working within the city's site coverage and height limitations.

Connection / Community

- Create a gracious Welcome Center / Fellowship Hall that becomes a clear and inviting main entrance to MDPC, orients visitors and members alike, and promotes sharing time with Christ.
- Clearly organize ministry areas to reduce travel time and promote collaboration.

Evangelism / Conversations

- Revitalize the Sanctuary and Chapel for worship and music for all services and improve the Sanctuary Lobby to facilitate flow and promote meaningful conversations before and after services.

Formation / Discipleship

- Provide a highly flexible 400 - 500 capacity space with adjacent small group rooms to support growing worship services and large attendance teaching opportunities.
- Create exciting and secure Children's spaces, while aligning enrollment potential between the Little School and Yellow School to continue to attract young families. Consolidate Youth breakout rooms and foster Youth engagement with the broader MDPC community.

Service / Outreach

- Improve facilities for radically generous outreach to meet the local and global needs, while also aiming to equip all believers in volunteerism and loving generously.

2011 / 2012 Good Housekeeping Goals

1. Make the church **more attractive and inviting**, especially to young families.
2. Plan for Renovation of the **Sanctuary**.
3. Provide warm, inviting spaces for **Fellowship Gathering**
4. **Maximize underutilized areas** of the site and buildings and plan for the **maximum build out** of the campus as allowed by city open space requirements.
5. Plan for **growth** and enhancement of church ministries.
6. Plan for **gracious flow** from parking to the Sanctuary.
7. Plan for improvements to the church's **infrastructure**.

Space Program

Memorial Drive Presbyterian Church										Memorial Drive Presbyterian Church									
Existing										Master Plan Program									
Merriman Holt Powell Architects										Sanctuary/Worship									
Room Name	Rm #	No.	Pop.	Tot.	NSF	EA	NSF	EA	GSF	Room Name	Rm #	No.	Pop.	Tot.	NSF	EA	NSF	EA	GSF
Sanctuary/Worship										Sanctuary/Worship									
Existing										Existing, New/Changed in Bold									
41,431										44,574									
Sanctuary					11,583					Sanctuary					11,583				
Recess Room/Storage Workshop					211					Recess Room/Storage Workshop					211				
Sanctuary Lobby					4,984					Sanctuary Lobby					4,984				
South Gallery					1,288					South Gallery					1,288				
North Gallery					989					North Gallery					989				
Alt. Room					117					Alt. Room					117				
Brider's Room					658					Brider's Room					706				
Brider's RR					75					Brider's RR					90				
Storage					189					Storage					176				
Restroom					1,053					Restroom					1,053				
Gathering Room/Family Room					960					Gathering Room/Family Room					960				
Caring Room					162					Caring Room					162				
Men's Restroom					264					Men's Restroom					264				
Women's Restroom					249					Women's Restroom					249				
Family Restroom					45					Family Restroom					45				
Storage (Off West Gallery)					106					Storage (Off West Gallery)					106				
Chapel					2,399					Chapel					2,399				
Chapel Brider's Room	MC116				655					Chapel Brider's Room	MC116				71				
Taber					71					Taber					85				
Restroom					87					Restroom					87				
Restroom					60					Restroom					60				
Restroom					64					Chapel Sanctuary / BPC Kitchen					100				
Equipment					33					Equipment					123				
Storage (in Sunbelt Room)					82					BPC Storage					100				
Prayer Chapel					274					Prayer Chapel					274				
Recessing Hall					6,651					Recessing Hall					6,651				
Prayer					1,812					Prayer					1,812				
Media Office (Basement)					123					Storage					100				
Office 1					163					Office 1					167				
Office 2					163					Office 2					168				
Media Basement					848					Media Basement					848				
Recording Studio					387					Recording Studio					346				
Studio					161					Studio					99				
Mixing					161					Mixing					161				
Restroom (Basement)					387					Restroom (Basement)					387				
Restroom (Basement)					387					Restroom (Basement)					387				
Restroom (Basement)					60					Restroom (Basement)					60				
Restroom (Basement)					117					Restroom (Basement)					117				
AV Room (Sanctuary)					117					AV Room (Sanctuary)					117				
Shared Storage					2,626					Shared Storage					2,626				
CLC Basement Storage 1					268					CLC Basement Storage 1					268				
CLC Basement Storage 2					268					CLC Basement Storage 2					268				
Sanctuary Basement Storage 1					104					Sanctuary Basement Storage 1					104				
Sanctuary Basement Storage 2					104					Sanctuary Basement Storage 2					104				
Wet Coat					29					Wet Coat					29				
Men's Restroom					281					Men's Restroom					281				
Organ Storage					106					Organ Storage					106				
Storage (By Family Room)					106					Storage (By Family Room)					106				
Storage (Juniors, by Sanctuary)					106					Storage (Juniors, by Sanctuary)					106				
Sanctuary BOM					46					Sanctuary BOM					46				
IT					42					IT					42				
Janitor					904					Janitor					904				
Organ					104					Organ					104				
Organ Equipment					104					Organ Equipment					104				
Organ Equipment					104					Organ Equipment					104				
Choir										Choir									
3,419										3,400									
Existing										New/Changed									
Choir Practice Room					2,215					Choir Practice Room (Shared)					2,000				
Recess Room 1					989					Men's Rehearsal Room					280				
Recess Room 2					217					Women's Rehearsal Room					480				
Music Library					713					Music Library					780				
Choir Storage					99					Choir Storage					180				
Rehearsal Practice Room (Shared)					1,688					Rehearsal Practice Room (Shared)					1,600				
New Welcome Center										New Welcome Center									

Space Program Highlights

<u>Ministry</u>	<u>Existing</u>	<u>Master Plan Program</u>
General	Fellowship Hall	400/500-person Multi-Purpose New Welcome Center
Children	9 Classrooms	shared space with expanded Little & Yellow Schools expanded Zone & Galaxy
Youth	In CLC and Main Building	Consolidate in CLC Building and gain breakout space
Young Adult	3 Classrooms	5 Classrooms
Little School	15 rooms + multipurpose	15 rooms + multipurpose
Yellow School	5 Classrooms + multipurpose	8 classrooms + multipurpose

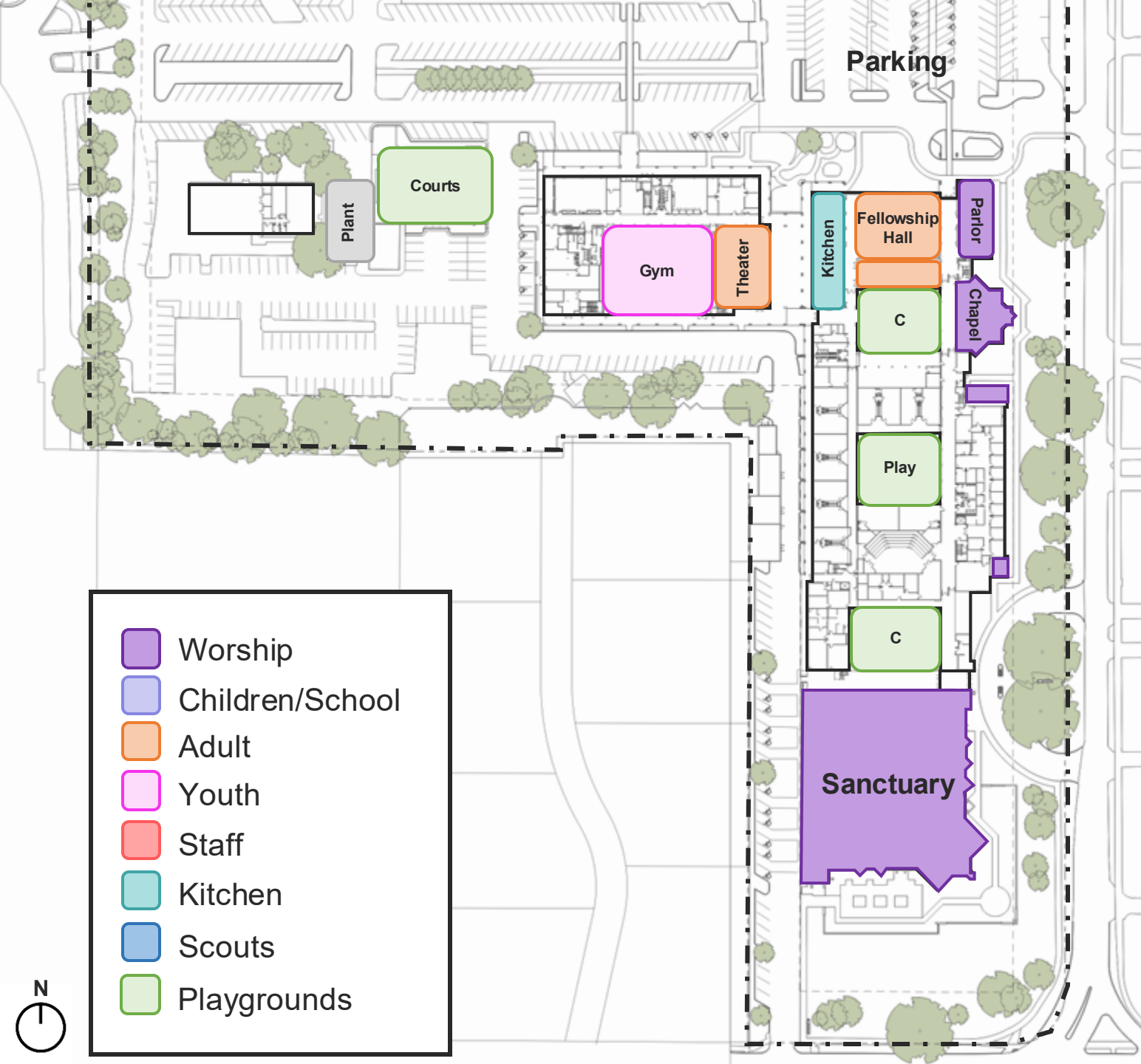
Worship Program Highlights

- Sanctuary:
Comfortable Seating Capacity: **956** (24" per person, @ 80%)
Code Capacity : **1,594** people (18" per person)
- **New Multipurpose Room:**
Comfortable Seating Capacity: **400** (@ 80%)
Code Capacity: **500** people (lecture seating)
- Chapel:
Comfortable Seating Capacity: **175** (24" per person @ 80%)
Code Capacity: **299** people (18" per person)



Gaming

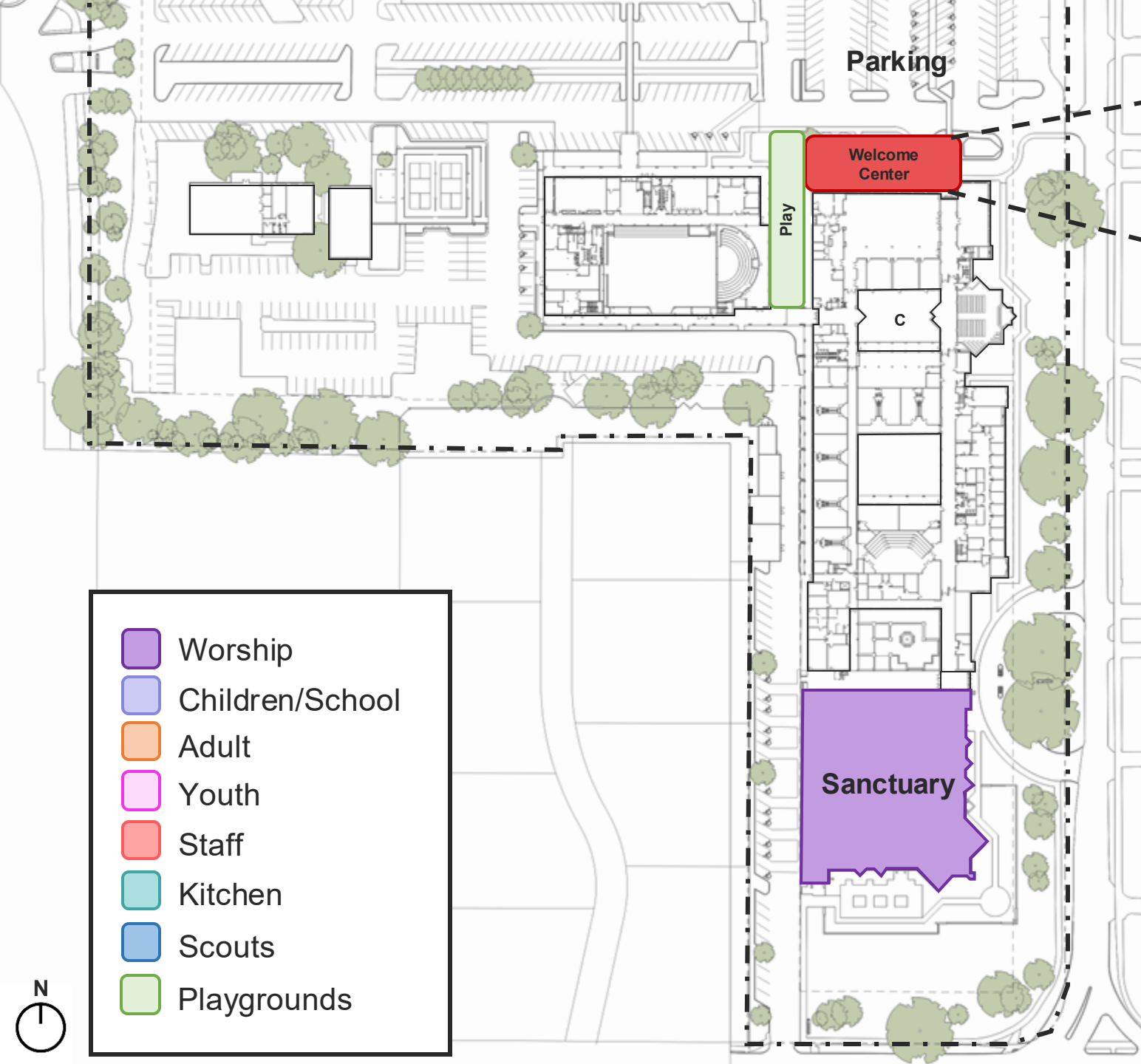
Initial Thoughts



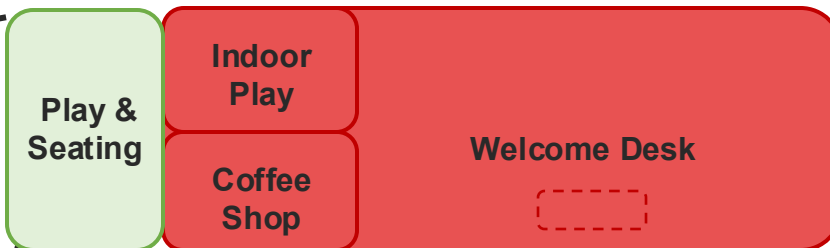
What wouldn't move?

Sanctuary
Chapel
Chapel Bride's Room
Prayer Chapel
Parlor
Kitchen
Fellowship Hall
Amphitheater
Gym
Courtyards
Central Plant
Pickleball Courts

Refresh & Expand as Needed



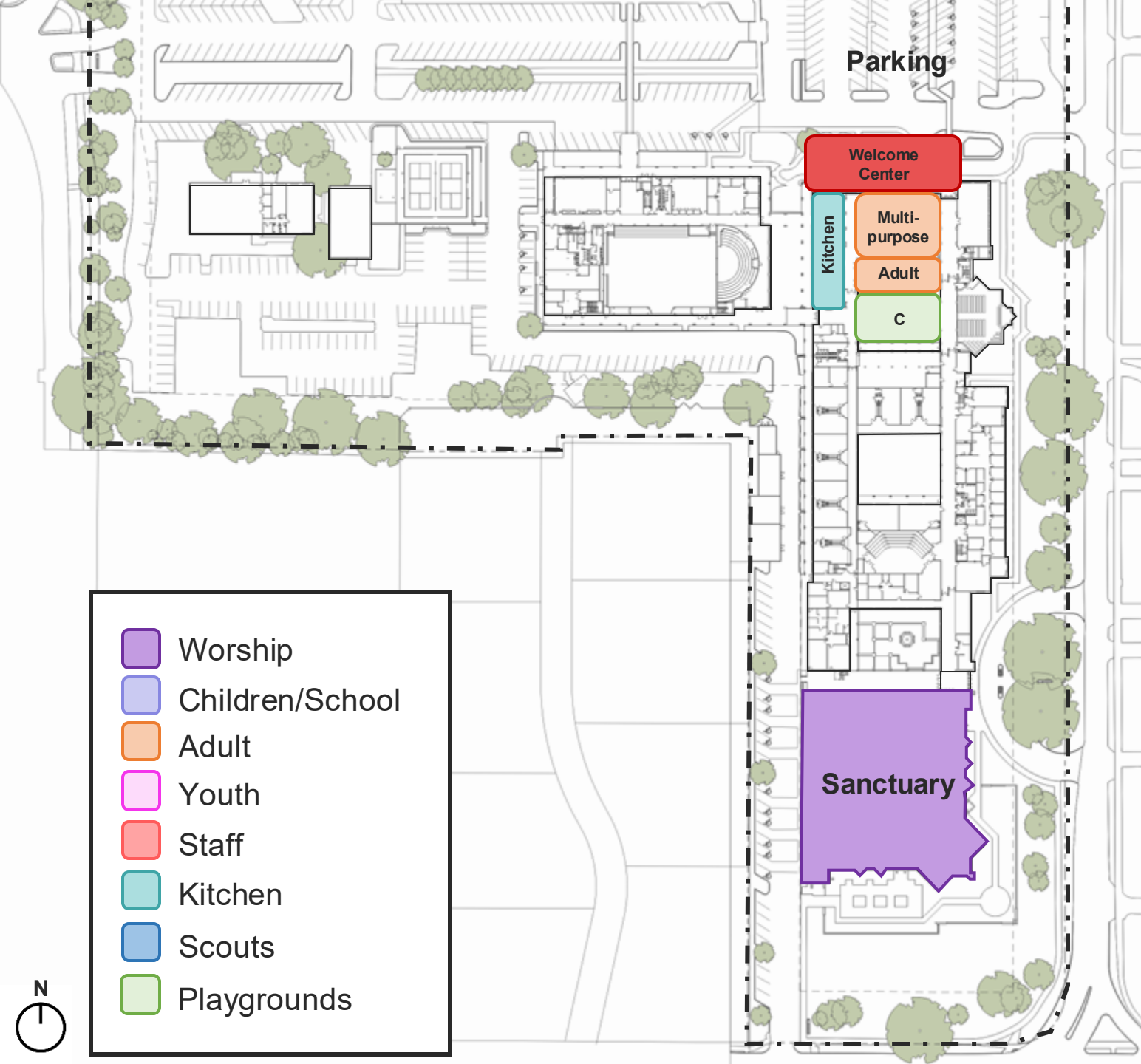
New Main Entrance ↓



Initial Thought 1:

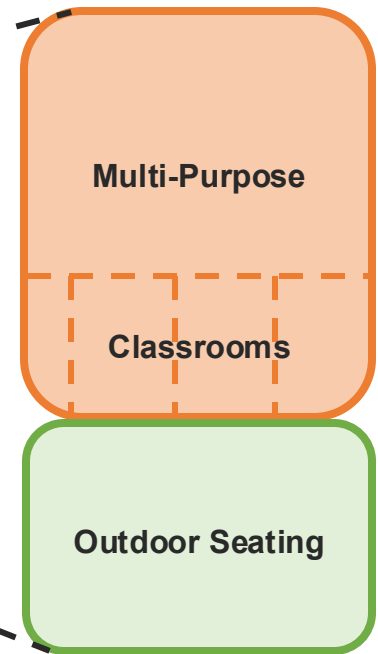
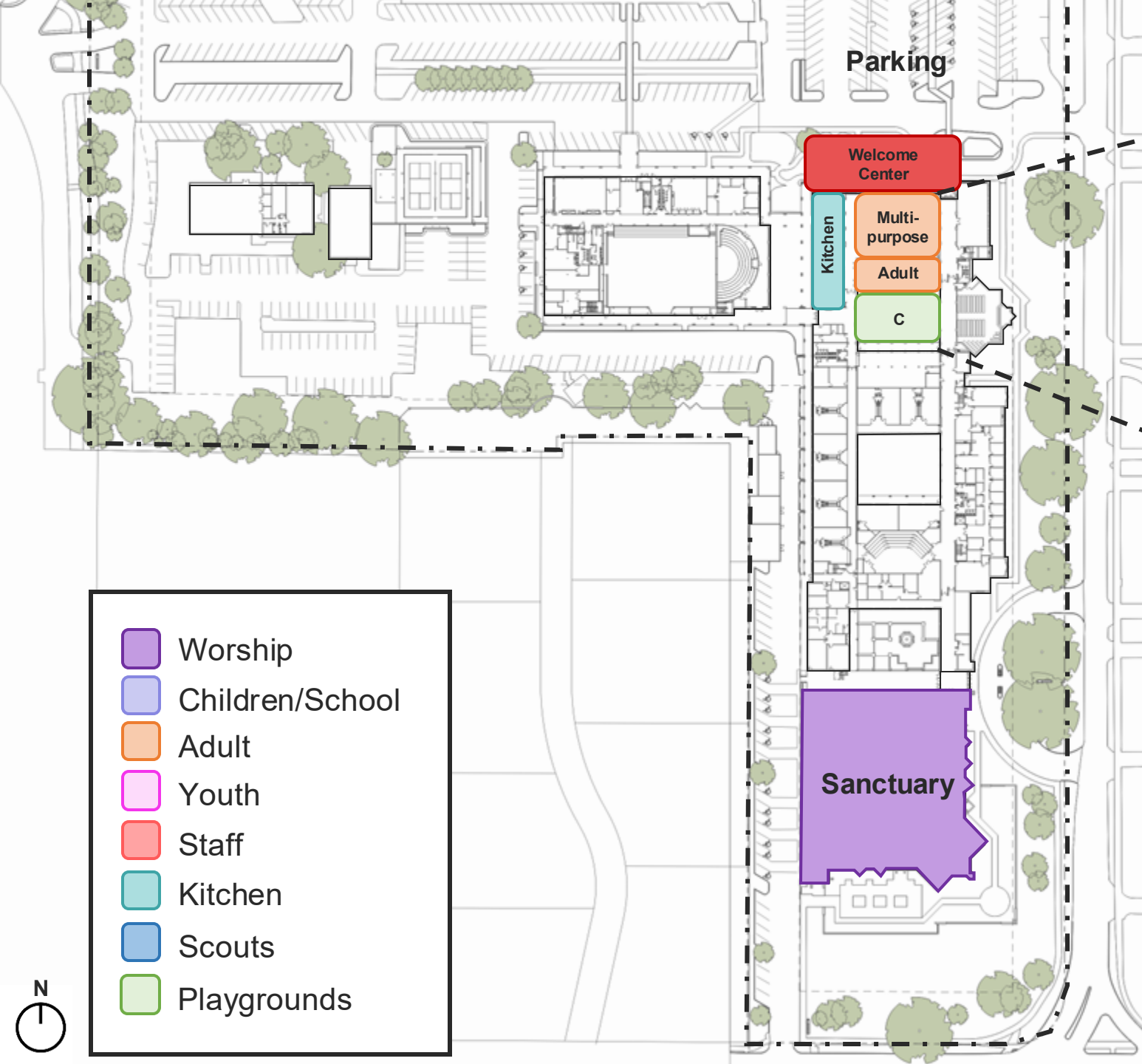
Provide a new Welcome Center and Front Door for the Campus close to Parking.



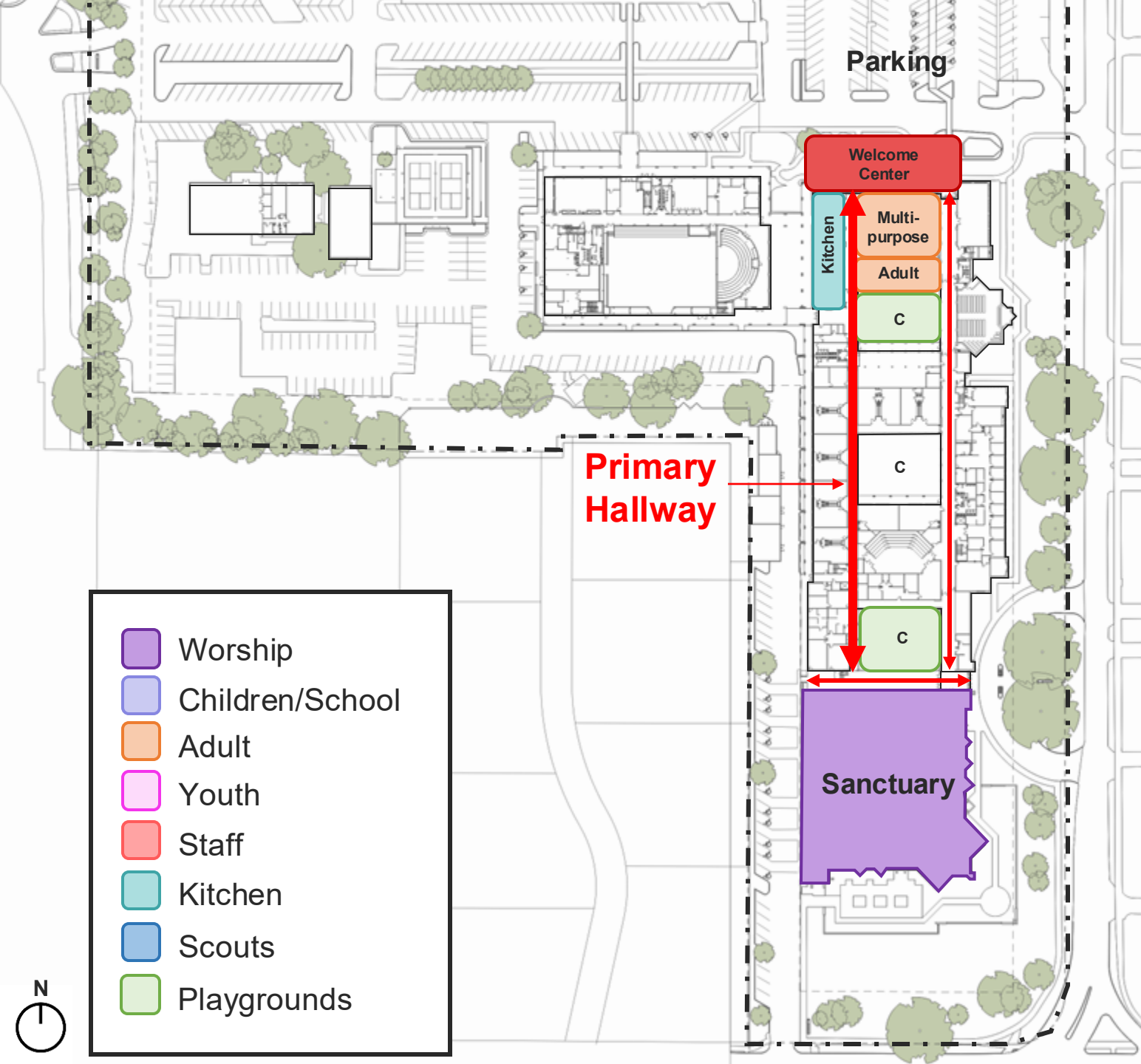


Initial Thought 2:

Expand the Fellowship Hall to become the 400 or 500 capacity (lecture seating) Multipurpose Space and use the adjacent classrooms as break-out rooms.



Initial Thought 3:
Increase the utilization of
the Chapel Courtyard

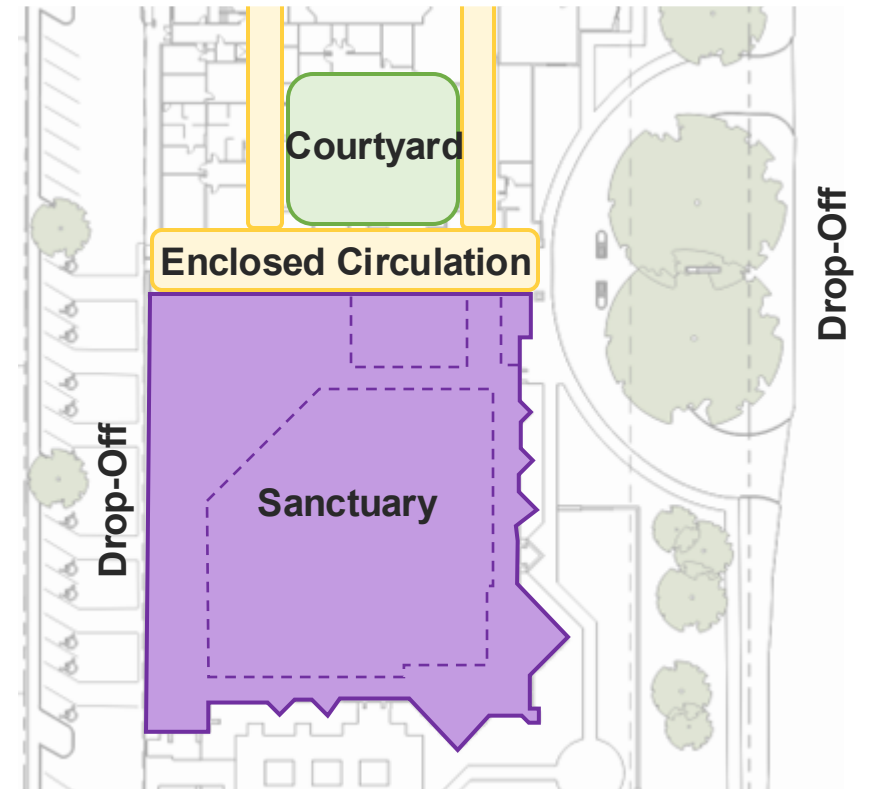


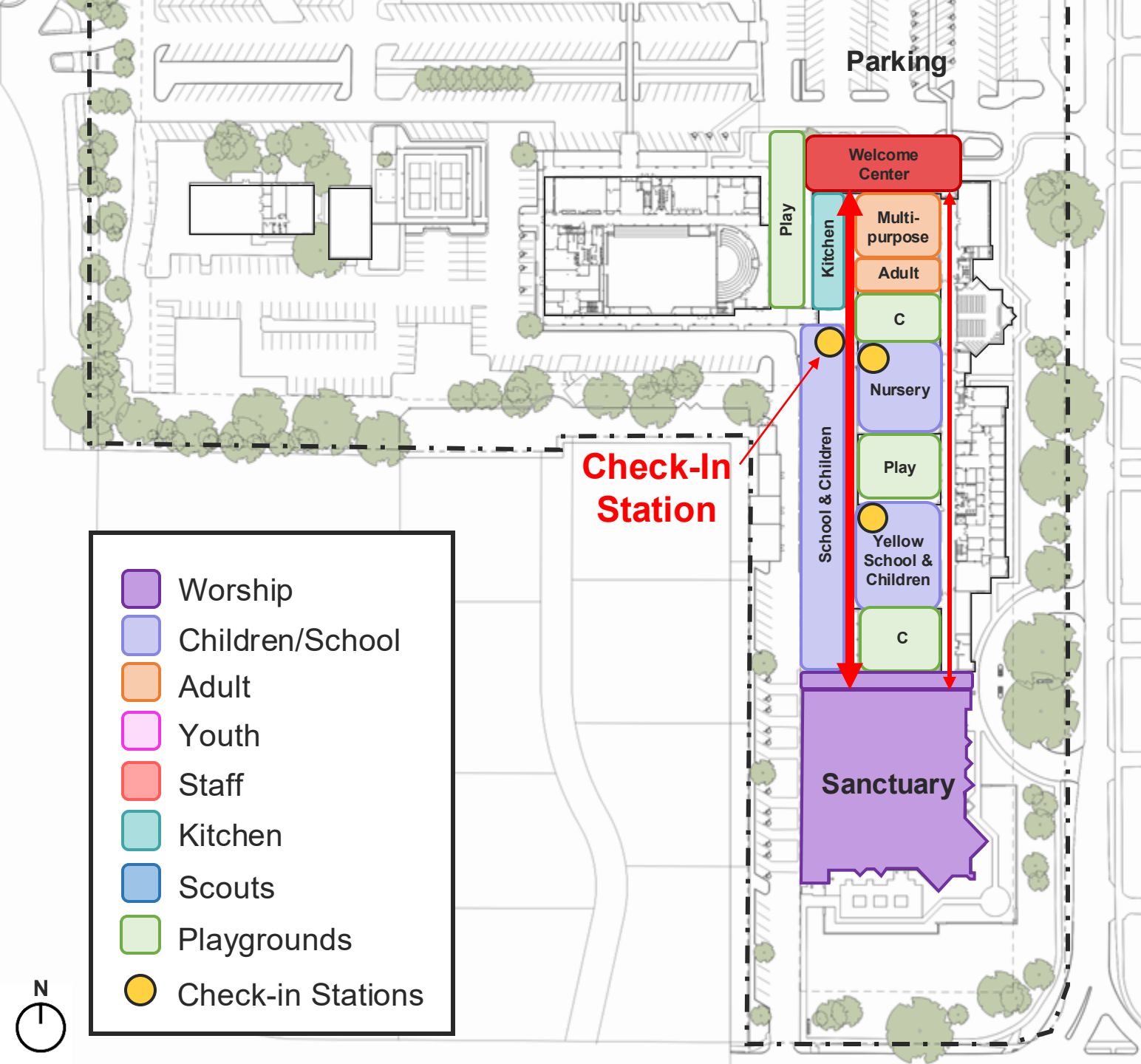
Initial Thought 4:
Connect the Campus
with uninterrupted
conditioned corridors.



Initial Thought 5:

Enclose pathways to Sanctuary



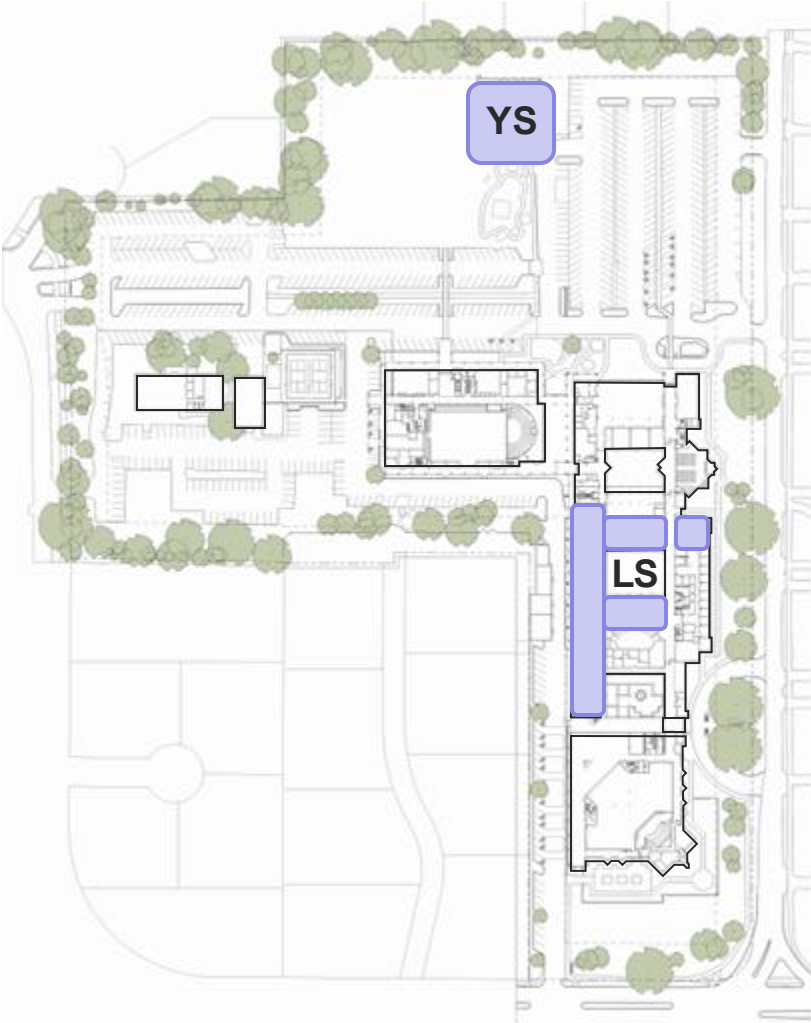


Initial Thought 6:

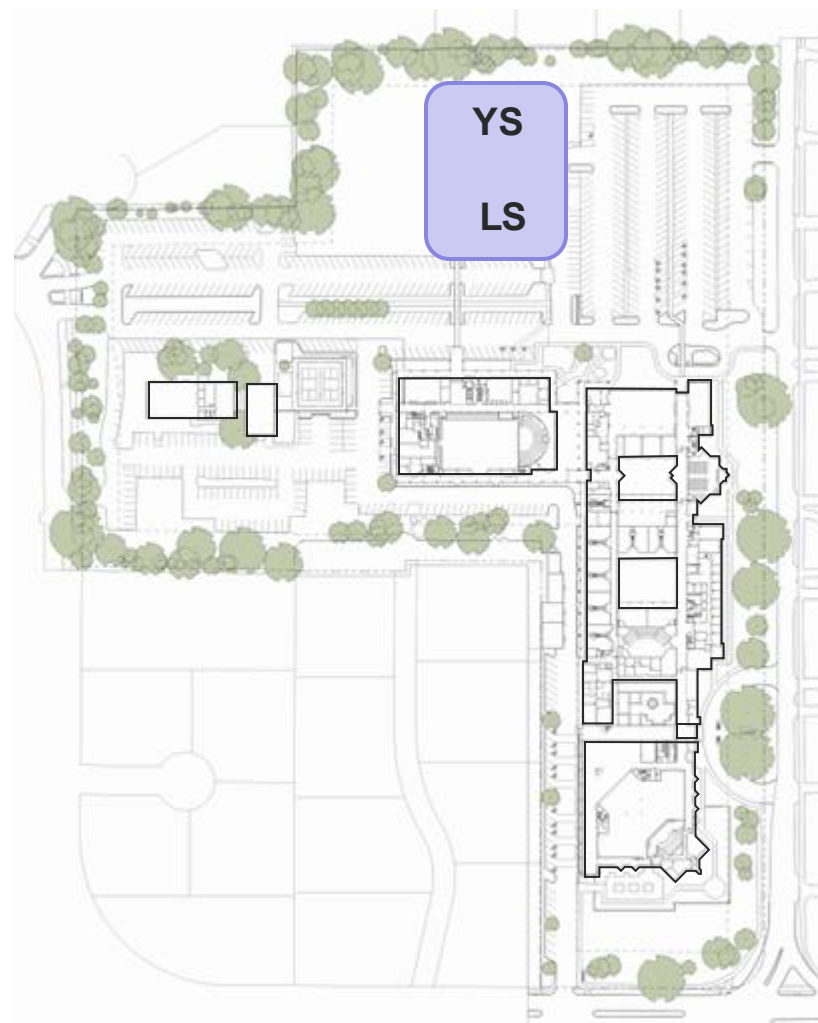
Replace the oldest part of campus with a combined Little School and Yellow School, that is shared by Children's Ministry. Provide internal circulation and check-in stations within each zone.

Little School, Yellow School, & Children's Ministry

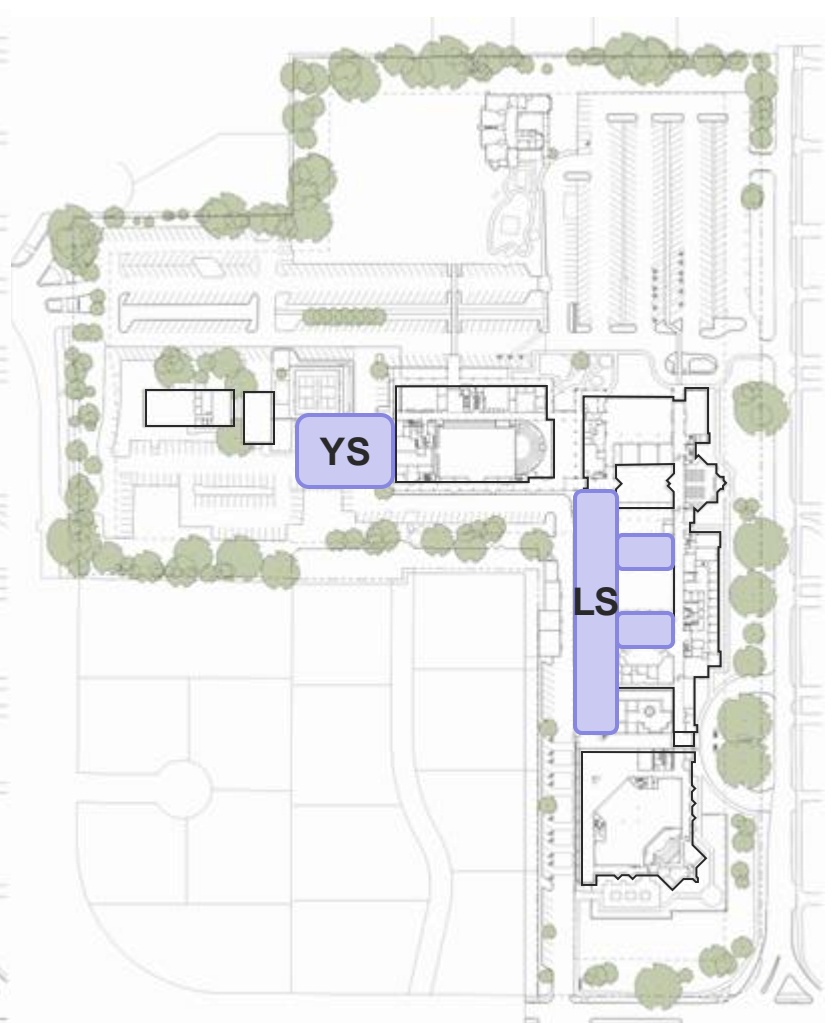
Current Location

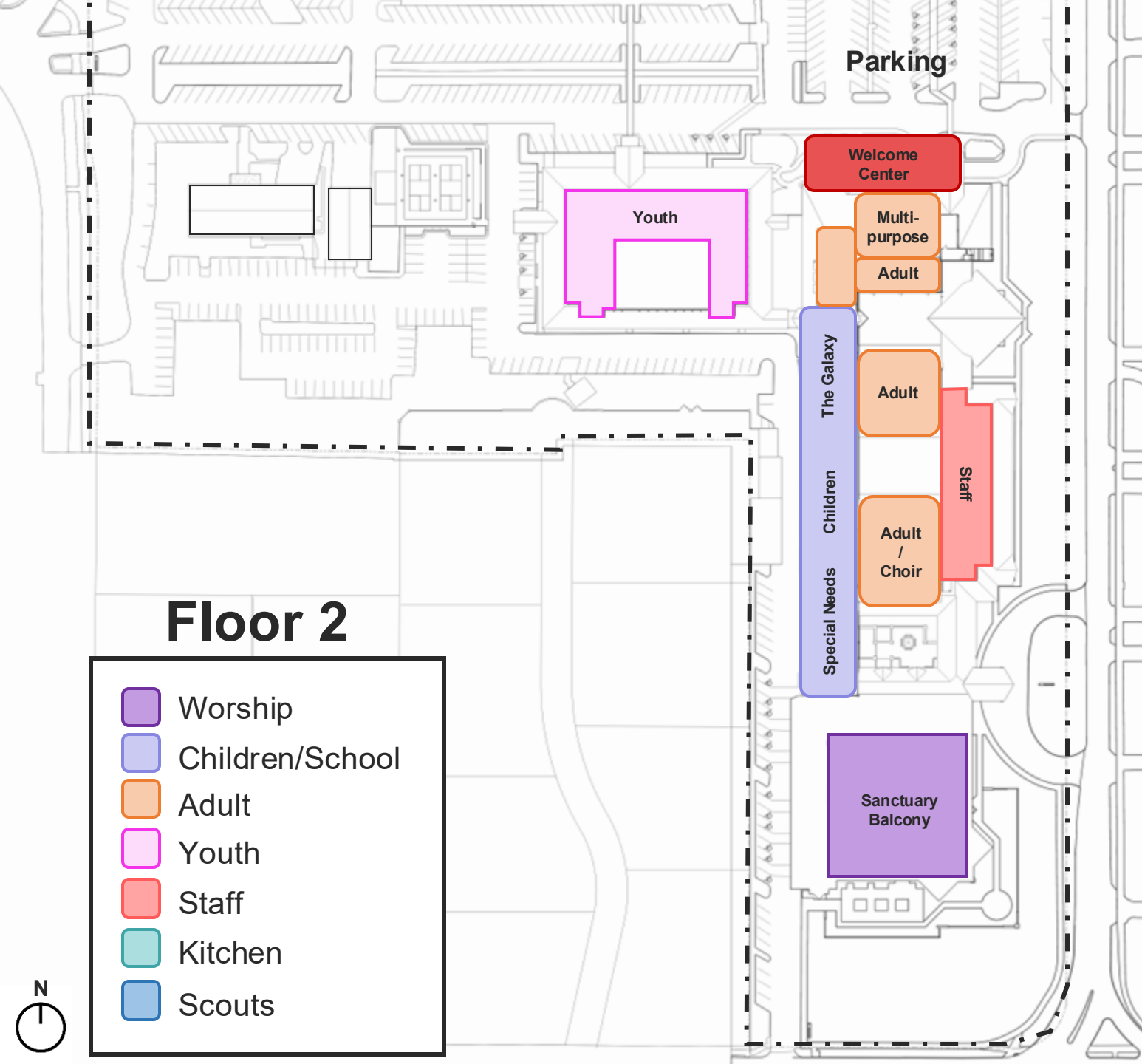


Alternative Location 1



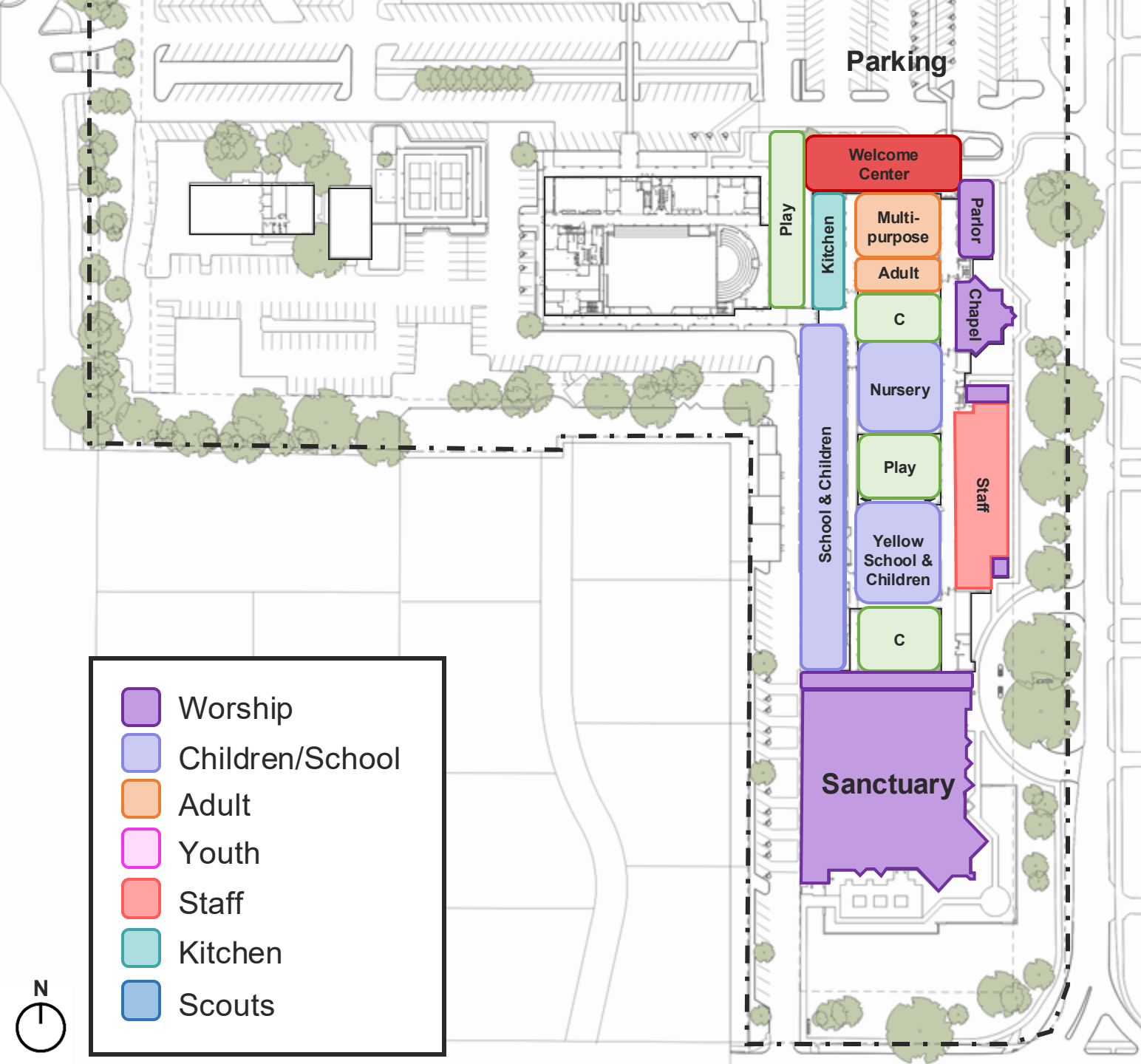
Alternative Location 2





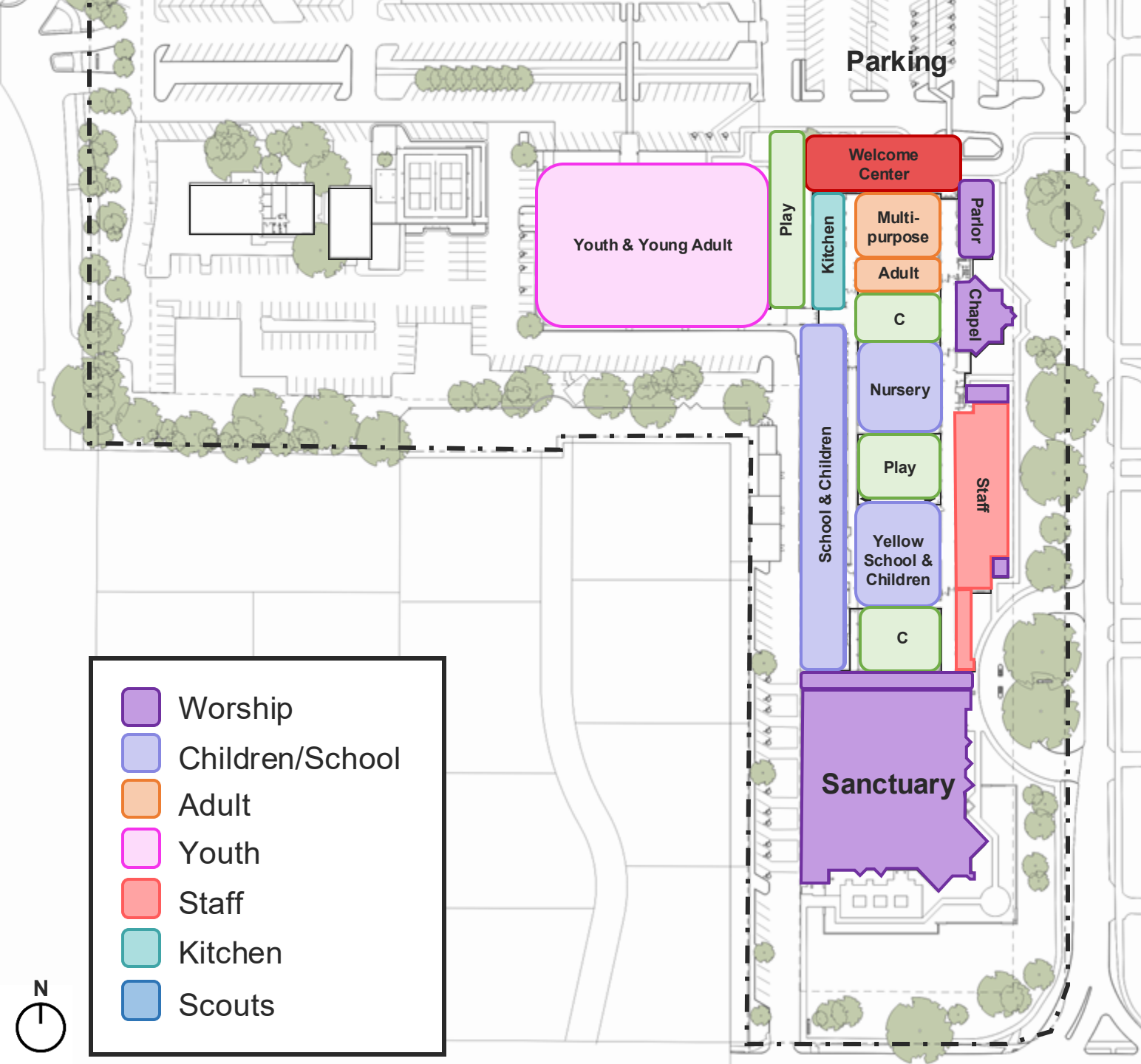
Initial Thought 7:

Replace oldest parts of the campus and free up the first floor for children's spaces by moving adult classrooms and multi-purpose choir rooms to the second floor.



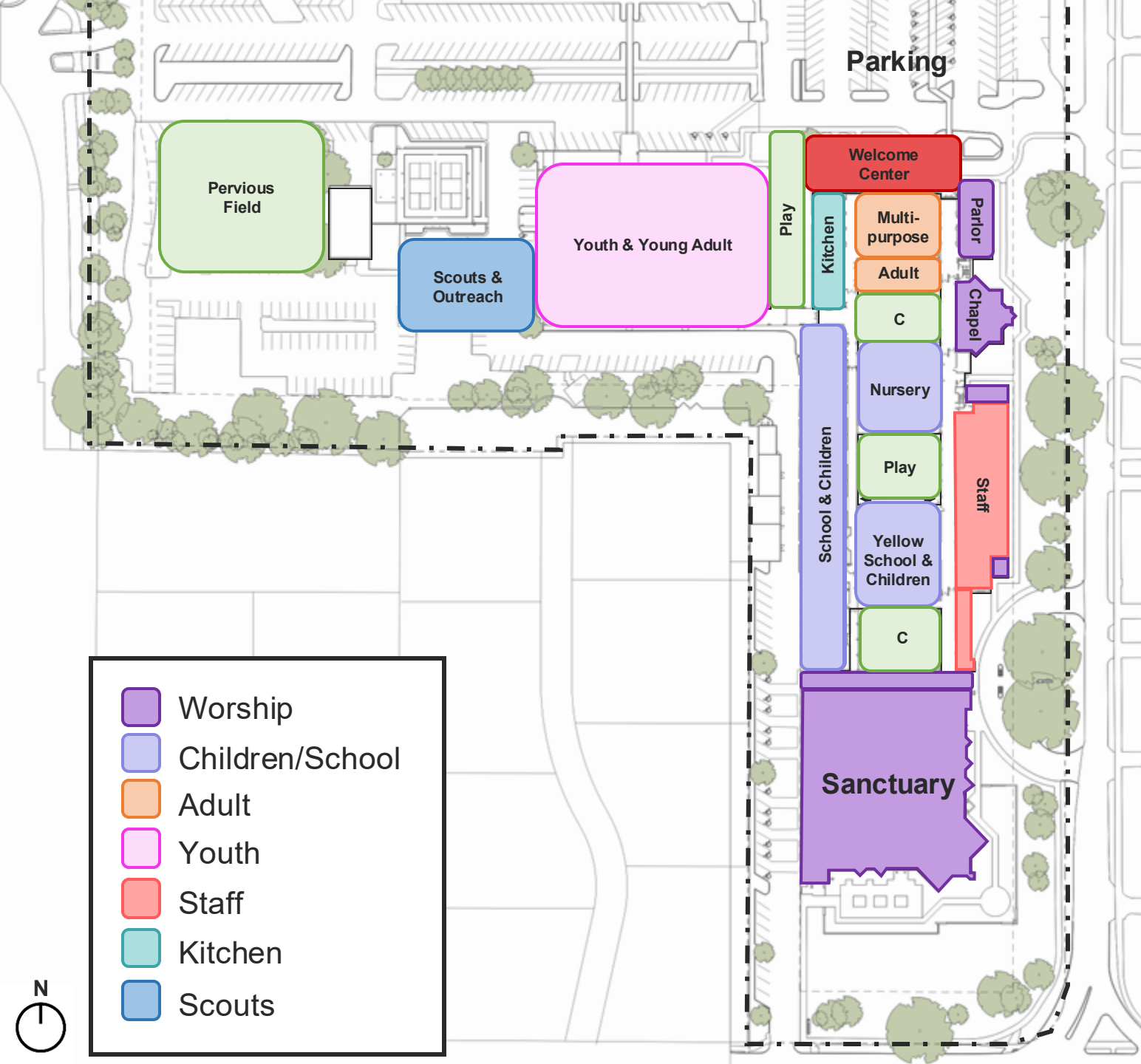
Initial Thought 8:

Consolidate staff offices and put staff that are not involved in everyday activities of the Church in the existing Yellow School Building.



Initial Thought 9:

Move all offices and adult classrooms out of the CLC to provide Young Adult classrooms and Youth break-out rooms



Questions

Email Additional Questions

masterplan@mdpc.org

Additional Information





Thank you!

<u>Sunday morning Schedule</u>			
	<u>Start</u>	<u>End</u>	<u>2023 ASA</u>
Blended	8:30	9:30	102
Contemporary	9:45	10:45	500
Traditional Worship	11:15	12:15	248
Spanish	11:15	12:15	125
Future Congregation			
Sunday School	9:45	10:45	65
Adults			
Sunday School	11:15	12:15	
Adults			
Youth			
Staff			20
Total ASA, all services			975
Sunday School			315

Available Overflow Parking			
1	Second Baptist School (MEM)		75
2	Kinkaid		100
3	Frostwood Elementary		150
4	Memorial HS		400

	Worship	Sunday School @ 25% Attendance	Other Activities	Parking Need
8:30 am	0 Sanctuary 154 Chapel 0 MP Room	100 Total	50 Total	304 Total
9:45 am	756 Sanctuary 0 Chapel 0 MP Room	929 @ 25% = 232 Total	100 Total	1,088 Total People / 2.2 = 495 Cars Inefficiency factor .05= 520 Spaces
11:15 am	375 Sanctuary 100 Chapel 300 MP Room	756 @ 25% = 189 Total	50 Total	1014 Total

Space Utilization: Sunday Morning

ROOM	Capacity	8:30 AM	9:45 AM	11:15 AM
101	35			Life 2.0 (20's-30's, Married, Pre-school kids)
102	50			W&W Coed Group (Co-ed)
103	55			Daily Bread (30's-50's, Co-ed, Elementary/MS kids)
116 - Chapel Bride's Rm	16		Pathways Women: All ages, all stages	Grace and Peace (40's+, Co-ed)
122	55		Together In The Word (Co-ed)	available
126	40		GPS	GPS
127	45			Parents of Preschoolers (Parents of Preschool aged children)
170	55		Faith Explorations (60's+, Co-ed)	Cross+Roads (50's+, Co-ed)
171/172	45		Fuente Bible Study	Fuente Bible Study
206				Parents of Grade School children (Parents of children in Grade School)
217	30		YA	YA
218	30			The Parish (20's-30's, Co-ed)
219	45			Nearly & Newly (20's-30's co-ed)
Amphitheater	225		Building Your Faith	Building Your Faith
Parlor (furniture)	80		Quest Class (50's +, Co-ed)	Bible Basics (30's-40's, parents of school aged children)
Summit Room	100		ongoing 6 wk classes	
Pastors Conference Room	16			
ZOOM			Pathways (Women; all ages)	
Gathering Room (fixed furniture)	20	Baptism Sundays; Discover MDPC	Baptism Sundays; Discover MDPC	Baptism Sundays; Discover MDPC

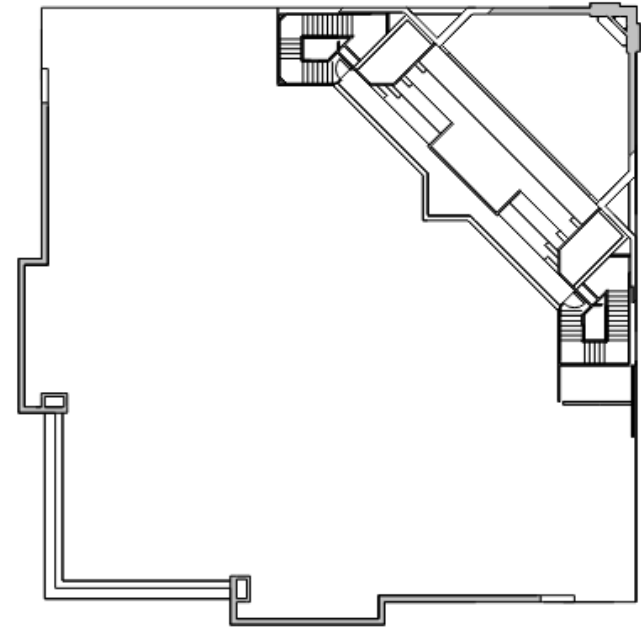
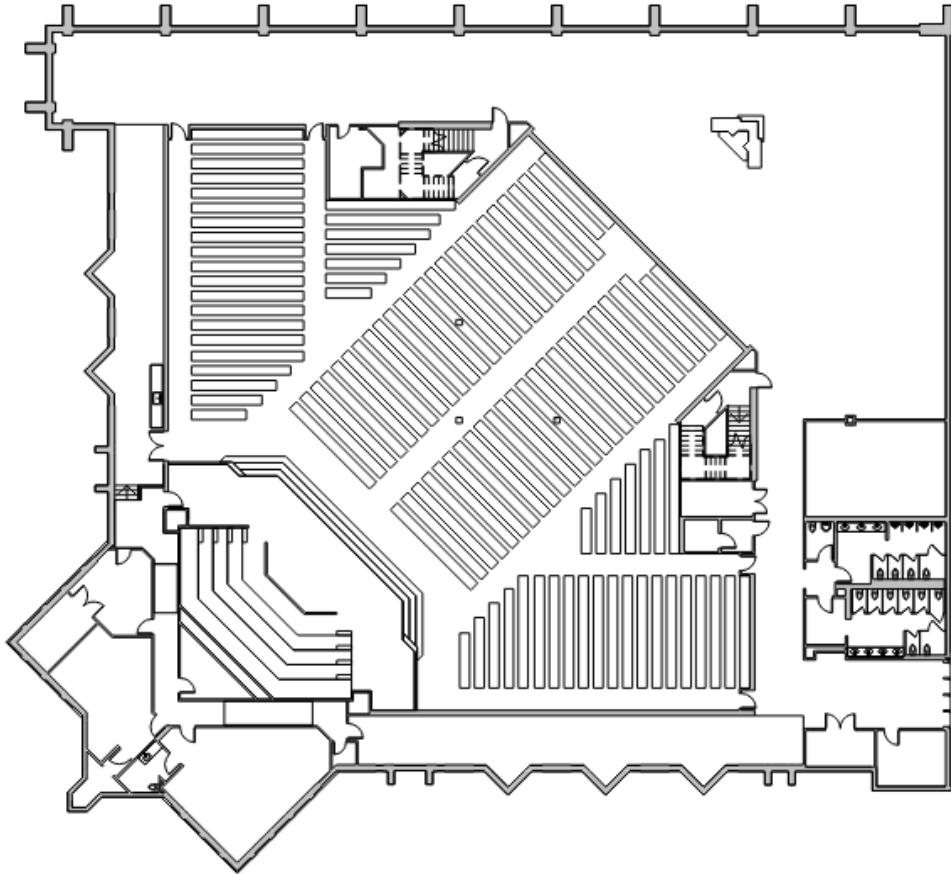
Adult Discipleship requested:
 4 (30-60 person) classrooms
 1 (100 person) classroom
 1 (500 person) multipurpose space

Is the Pastors Conference Room open for classes? Other Conference Rooms?

Sanctuary

Comfortable Seating Capacity: 956 (24" per person, @ 80%)

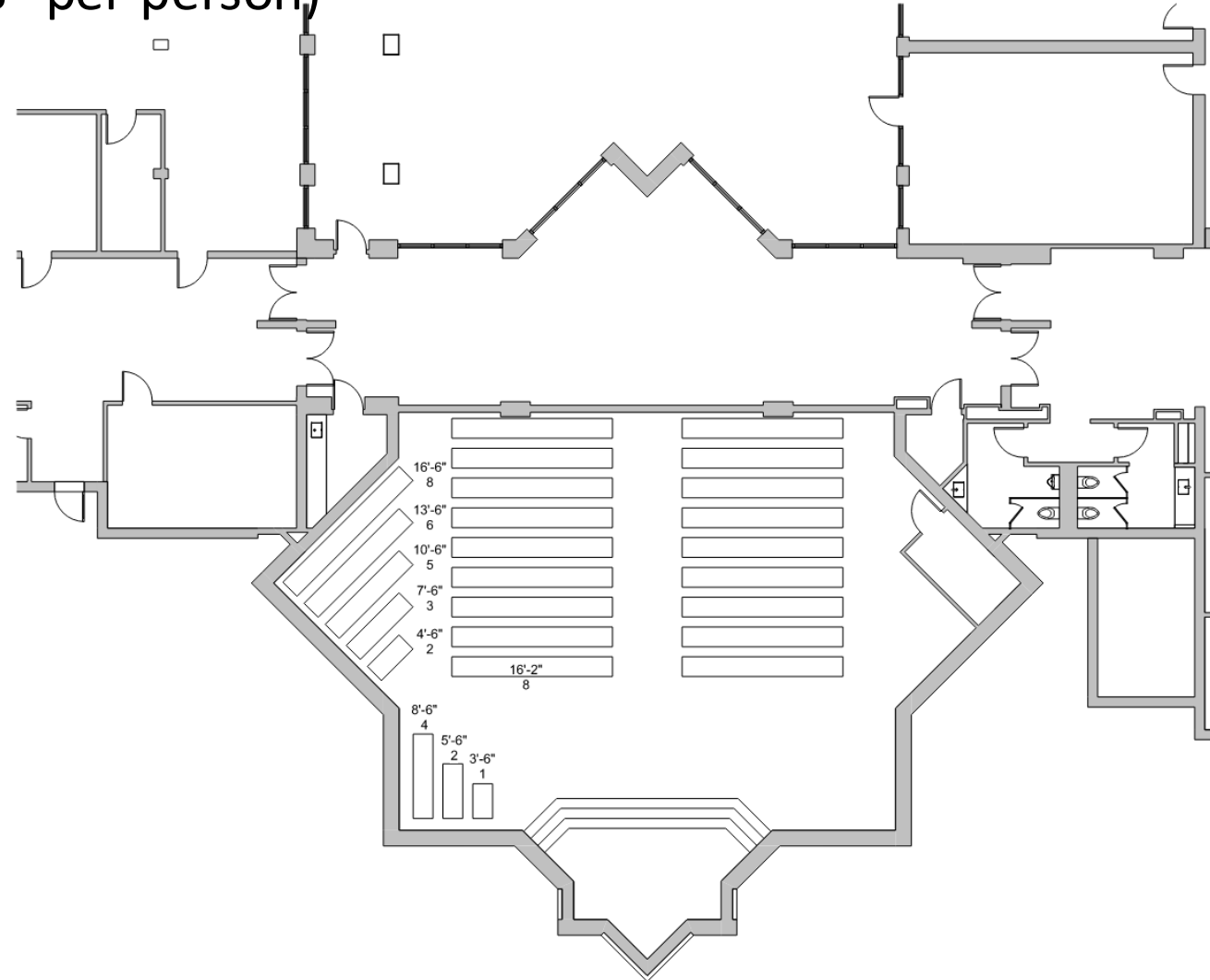
Code Capacity : 1,594 people (18" per person)



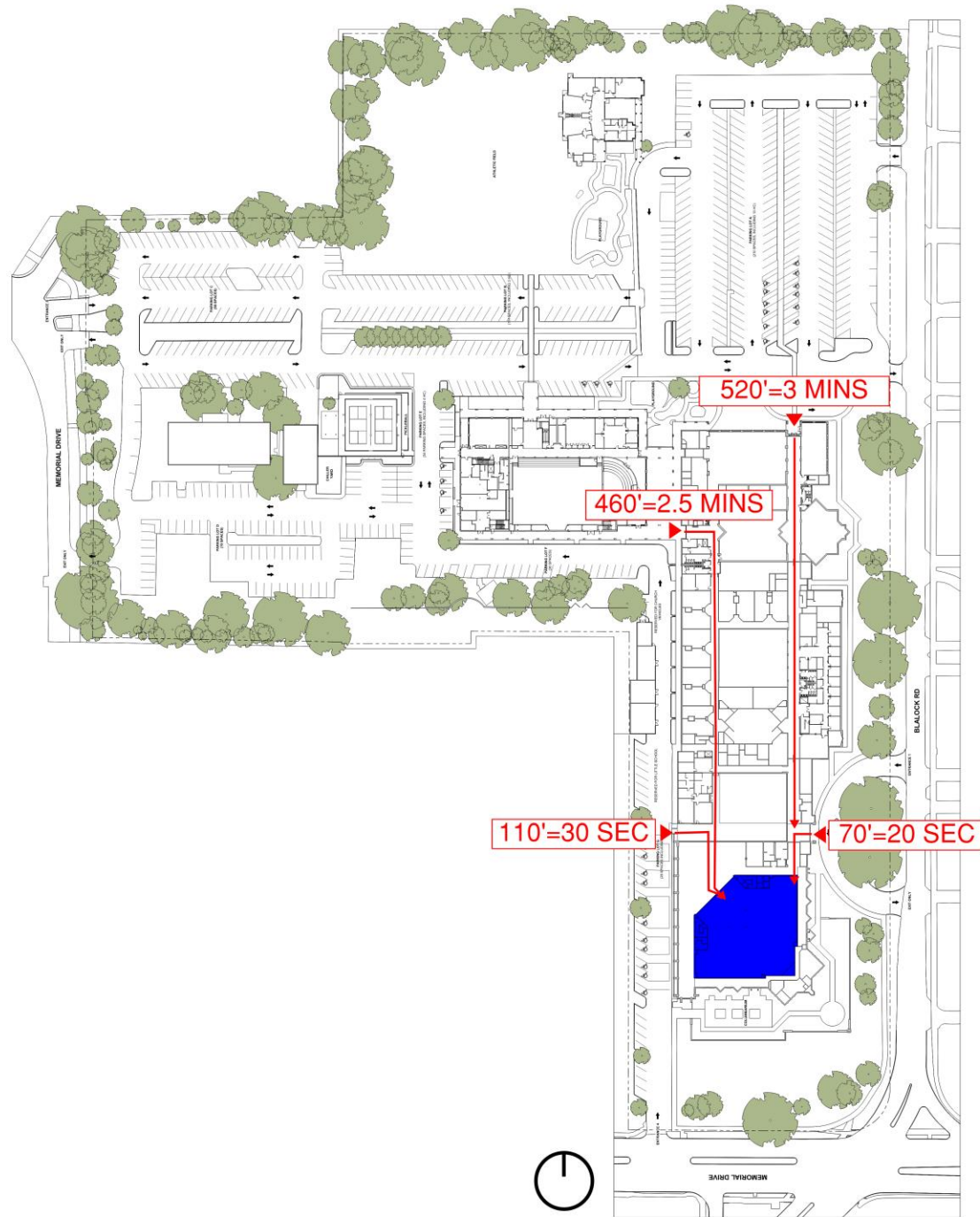
Chapel Capacity: 175 people

Comfortable Seating: (24" per person)

Code: 299 people (18" per person)



Walk Time to Sanctuary



Level Changes

