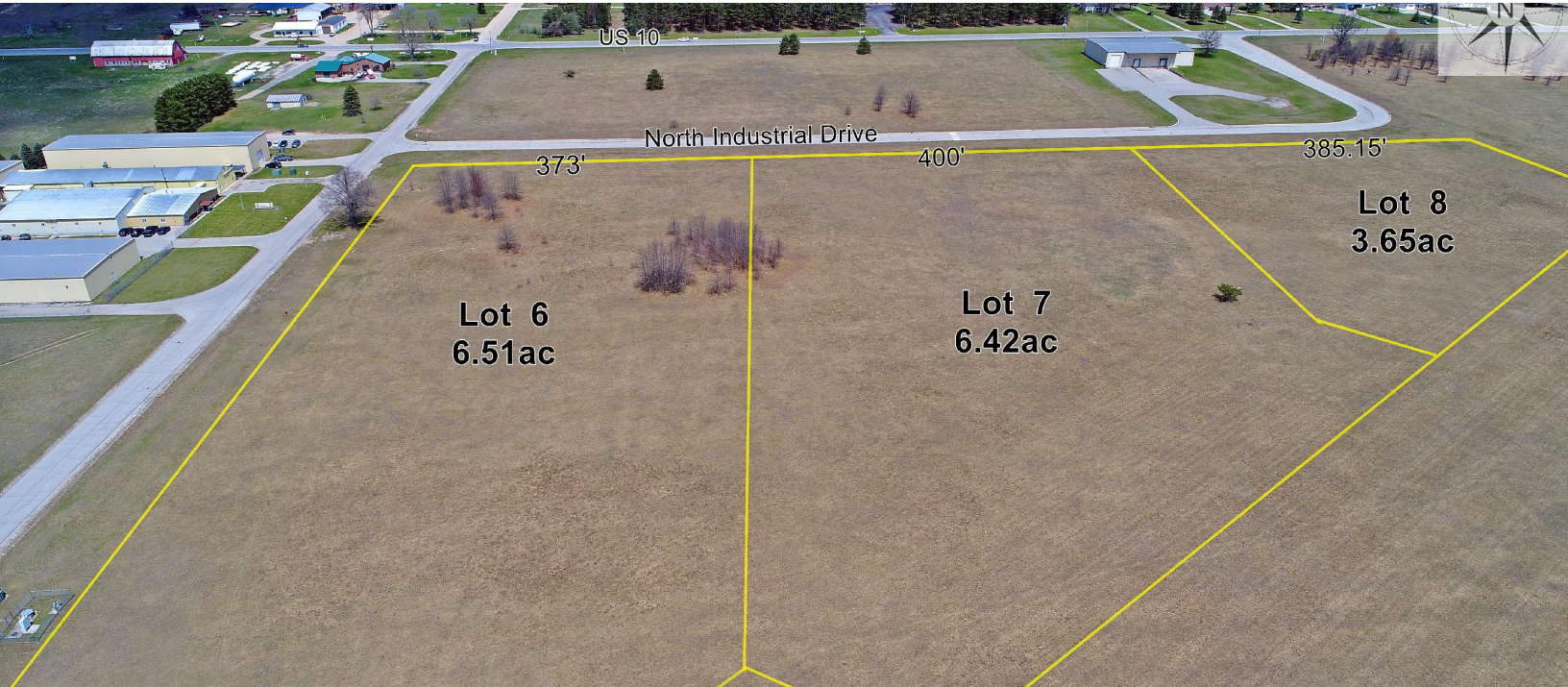


EVART AIR NORTH INDUSTRIAL

NORTH INDUSTRIAL DRIVE. EVART. MI 49631



Three commercial lots located off US-10 at the edge of Evart



3.65 / 6.42 / 6.51 Acres

Three commercial properties perfect for business of all sizes. Located right by US Highway 10, this location offers the perfect opportunity for industrial development. Conveniently located between US-131 and US-127.

Property

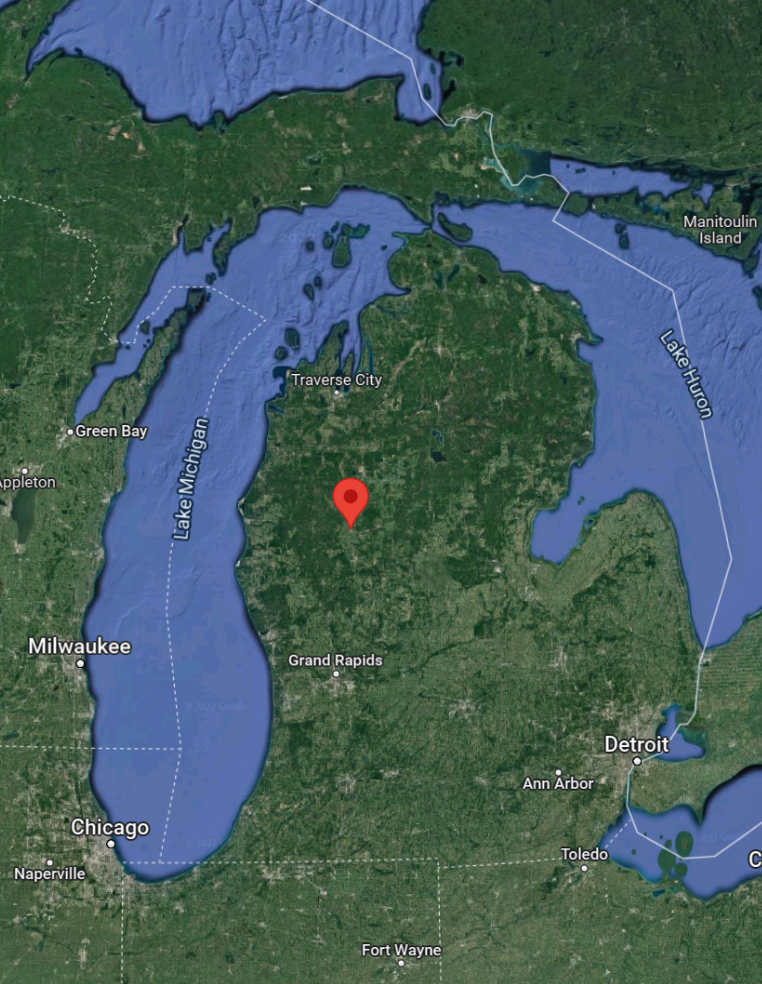
Street Address	North Industrial Drive
City	Evart, Michigan
County	Osceola County
Type of Space	Commercial
Min Acres	3.65 Acres
Max Acres	16.58 Acres
Use Potential	Industrial

Utilities

Energy Service	Consumers Energy
Gas Service	DTE
Water Service	City of Evart (6624k gallons per day)
Sewer Service	City of Evart (750k gallons per day)
Broadband	Point Broadband

Site Details

Municipality	City of Evart
Total Acres	16.58 Acres
Zoning	Industrial
Expandable	✓
Divisible	✓
Acreage	✓
For Purchase	✓
Environmental Phase I Study	✓



Lot 6
6.51ac



Lot 7
6.42ac



Lot 8
3.65ac

EVART CITY, MICHIGAN INDUSTRIAL PARCELS

Excellent opportunity for industrial development, in the heart of Michigan.

Access / Transit

Airports	MBS: 1 Hour, 11 mins GRR: 1 Hour, 25 mins
Nearest Highway	US-10, <1 mile
Nearest City, Pop>15K	Mount Pleasant: 46 mins
Healthcare	Spectrum Health
Higher Ed	Ferris State University, 30 min Mid Michigan College, 36 min Central Michigan University, 51 min
Major City Access	Grand Rapids: 1 hr, 14 mins Lansing: 1 hr, 48 mins Detroit: 2 hrs, 46 mins Chicago: 4 hrs, 4 min Cleveland: 5 hrs, 7 min

Community

Population	City of Evart: 1,742 Osceola County: 23,626
-------------------	--

Contact

Contact	City of Evart
Phone	Pepper Lockhart
Website	(231) 734-2181 citymanager@evart.org

