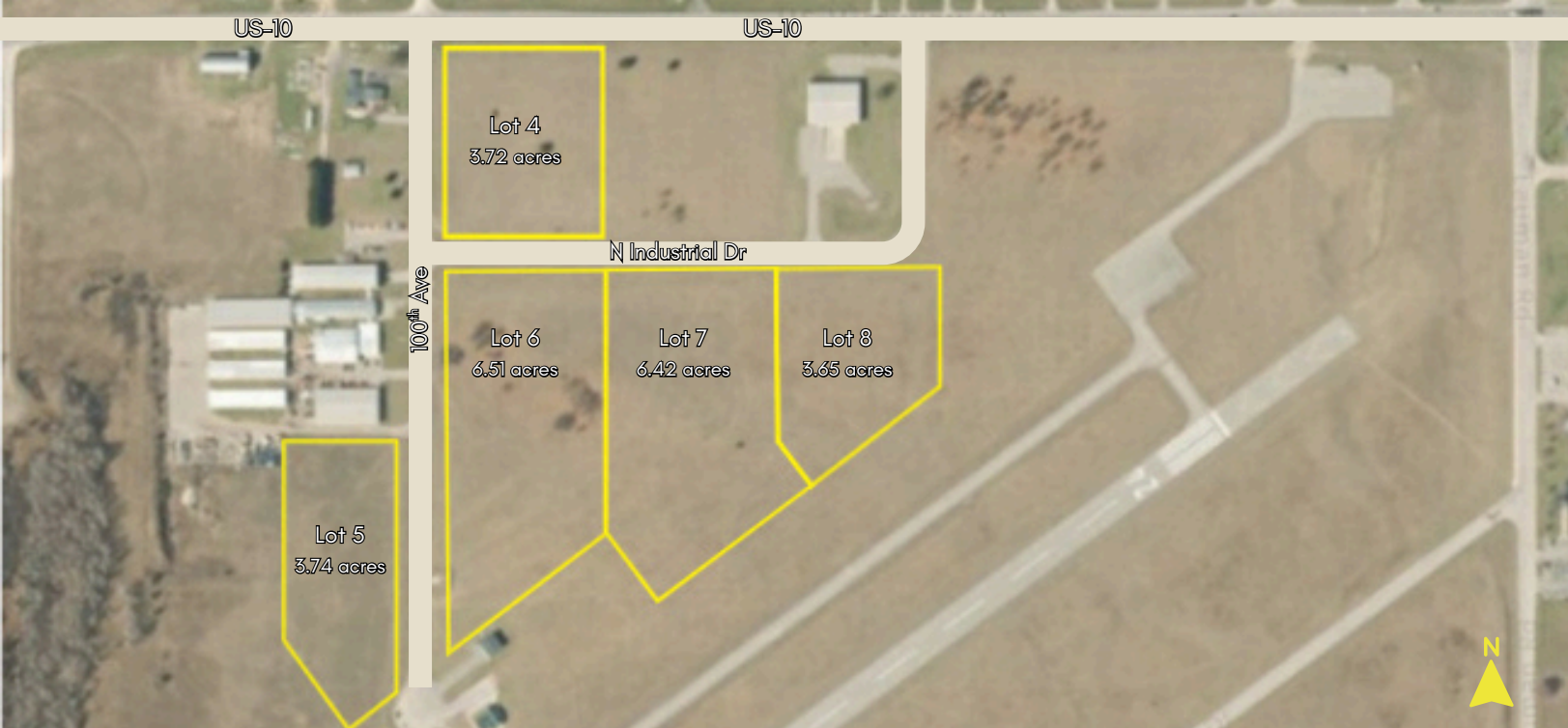


EVART AIR INDUSTRIAL PARK

N INDUSTRIAL PARK DR, EVART, MI 49631



MIDDLE MICHIGAN
DEVELOPMENT CORPORATION

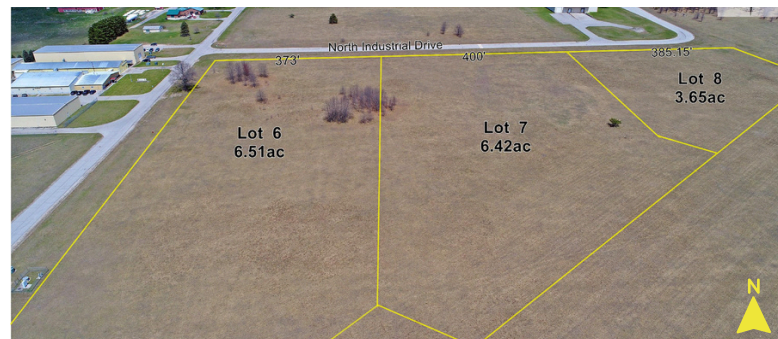


PROPERTY HIGHLIGHTS

EXCELLENT OPPORTUNITY FOR INDUSTRIAL DEVELOPMENT, IN THE HEART OF MICHIGAN.

FIVE VACANT INDUSTRIAL PARCELS LOCATED IN THE EVART AIR INDUSTRIAL PARK. LOCATED RIGHT BY US HIGHWAY 10, THIS LOCATION OFFERS THE PERFECT OPPORTUNITY FOR INDUSTRIAL DEVELOPMENT. CONVENIENTLY LOCATED BETWEEN US-131 AND US-127.

24.04 ACRES TOTAL AVAILABLE



FOR MORE INFORMATION, PLEASE CONTACT:

COMPANY	MIDDLE MICHIGAN DEVELOPMENT CORPORATION
CONTACT	KATI MORA
EMAIL	KATI.MORA@MMDC.ORG
PHONE	O: 989-772-2858 C: 989-400-1478
WEBSITE	WWW.MMDC.ORG



EVART AIR INDUSTRIAL PARK

N INDUSTRIAL PARK DR, EVART, MI 49631



MIDDLE MICHIGAN
DEVELOPMENT CORPORATION

PROPERTY DETAILS

ADDRESS	N INDUSTRIAL DR
CITY, STATE	EVART, MICHIGAN
ZIP CODE	49631
COUNTY	OSCEOLA
TYPE OF SPACE	VACANT INDUSTRIAL LOTS
MIN SIZE	3.65 ACRES
CONTIGUOUS	16.58 ACRES
PARCEL SIZE	
MAX SIZE	24.04 ACRES
PARCELS	5 PARCELS
AVAILABILITY	AVAILABLE NOW
USE POTENTIAL	INDUSTRIAL

ACCESS/TRANSIT

AIRPORTS	MBS: 1 HOUR, 11 MIN GRR: 1 HR, 25 MIN
NEAREST HIGHWAY	US-10: <1 MIN US-131: 15 MIN US-127: 48 MIN
NEAREST CITY, POP > 15K	MT PLEASANT: 46 MIN
HEALTHCARE	SPECTRUM HEALTH
HIGHER ED	FERRIS STATE UNIV MID MICHIGAN COLLEGE CENTRAL MICHIGAN UNIV
MAJOR CITIES	GRAND RAPIDS: 1 HR, 14 MIN LANSING: 1 HR, 48 MIN DETROIT: 2 HR, 46 MIN CHICAGO: 4 HR, 4 MIN CLEVELAND: 5 HR, 7 MIN

SITE DETAILS

MUNICIPALITY	CITY OF EVART
TOTAL ACRES	24.04 ACRES
ZONING	GENERAL INDUSTRIAL
STUDIES	PHASE I ENVIRONMENTAL STUDIES COMPLETED MARCH 2020

UTILITIES

ENERGY SERVICE	CONSUMERS ENERGY
GAS SERVICE	DTE ENERGY
WATER SERVICE	CITY OF EVARRT 5.428 MILLION GPD
SEWER SERVICE	CITY OF EVART 750 THOUSAND GPD
BROADBAND	POINT BROADBAND

COMMUNITY

POPULATION	CITY OF EVART: 1,742 OSCEOLA COUNTY: 23,626
CRIME	LOWER THAN US AVERAGE

