


PREPARING A PLACE

2X2030

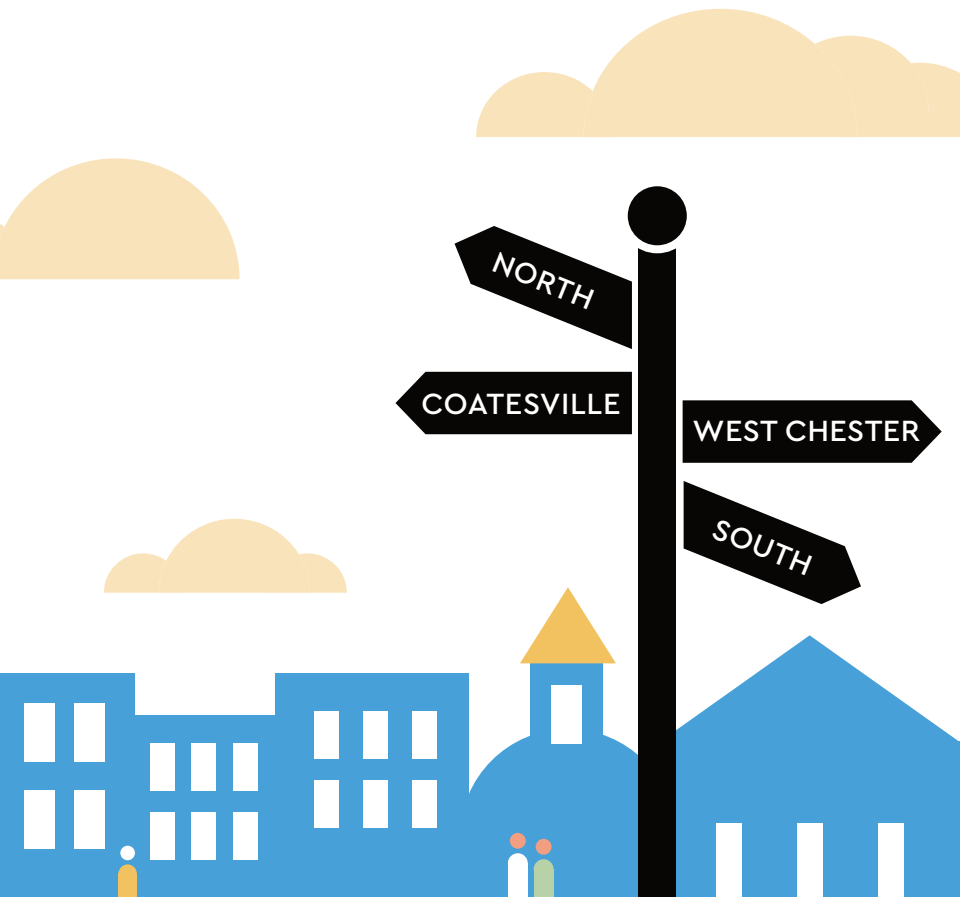


WHO ARE WE?

Mission  Leading people to grow in their faith, hope and love for Jesus Christ.

Vision  To plant 2 new Providence churches.





NORTH

COATESVILLE

WEST CHESTER

SOUTH



A Letter from our Pastors

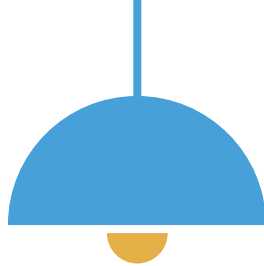
God will give you immeasurably more than we could ever ask or imagine, and we are often reminded of that truth when we walk through the doors of Providence.

The story of Providence is marked by lives being transformed by the love of Jesus. What started as a prayer meeting in a living room back in 2005 grew into an unimaginable display of people gathered weekly for prayer, singing, and to celebrate the work of God's grace and truth together. It was in these early days of our history that ***family*** became one of the central values to the culture of Providence. Eighteen years later the ***Providence family*** has grown, but the invitation to become a part of God's family is still being made. There is still ample room at God's table and He is preparing a place for you and others.

Our goal is to plant 2 new churches by 2030.
We need your help in ***Preparing a Place.***

- Pastor Todd Madonna + Pastor Phil Carnuccio





In my Father's house are many rooms. If it were not so, would I have told you that I go to prepare a place for you? And if I go and *Prepare a Place* for you, I will come again and will take you to myself, that where I am you may be also.

John 14:2-3





Todd Madonna

MULTIPLICATION PASTOR, *Prov Church West Chester*

LEAD PASTOR, *Prov Church West Chester*

Phil Carnuccio



CORE VALUES

JESUS IS THE FOCUS

We are in relationship with God through the person and life of Jesus. We refuse to be distracted by anything that takes our eyes off Jesus.

HEBREWS 12:1-2

IMPERFECT PEOPLE ARE WELCOME

We are a family of imperfect people being loved and transformed by God.

MATTHEW 9:12

TRANSFORMATION HAPPENS FROM THE INSIDE OUT

Healing happens when we slow down and allow God to reshape us from the inside out. The power of the Spirit, the truth of the Scriptures, and dependence on God will change us.

ROMANS 12:2

WE ARE A FAMILY

We are a family, living in community, fighting for joy and fueled by the gospel. We are more focused on how we love one another than what we consume. Honest feedback and feet to our faith is the atmosphere at Providence.

EPHESIANS 2:19; 1 CORINTHIANS 12:1-31

**DISCIPLES
ARE MADE
NOT BORN**

An authentic life is not automatic, it is the result of a passionate pursuit of Jesus. We equip people to be + make disciples.

MATTHEW 28:19

**WE ARE
BETTER
TOGETHER**

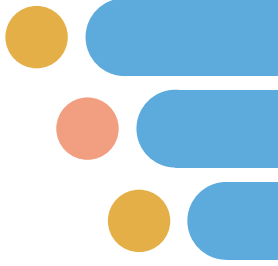
To give every person the opportunity to respond to the gospel, we must collaborate with others.

PHILIPPIANS 1:5

**IT'S THE
BEGINNING
OF THE END
IF WE DO NOT
REACH YOUNG
PEOPLE**

We are committed to reaching young people because they can serve God passionately, follow God faithfully, and change the world radically - Now! We equip them with grace and truth to shape future culture from the inside out.

DEUTERONOMY 6:7, 1 TIMOTHY 4:12



THE NEED TO MULTIPLY

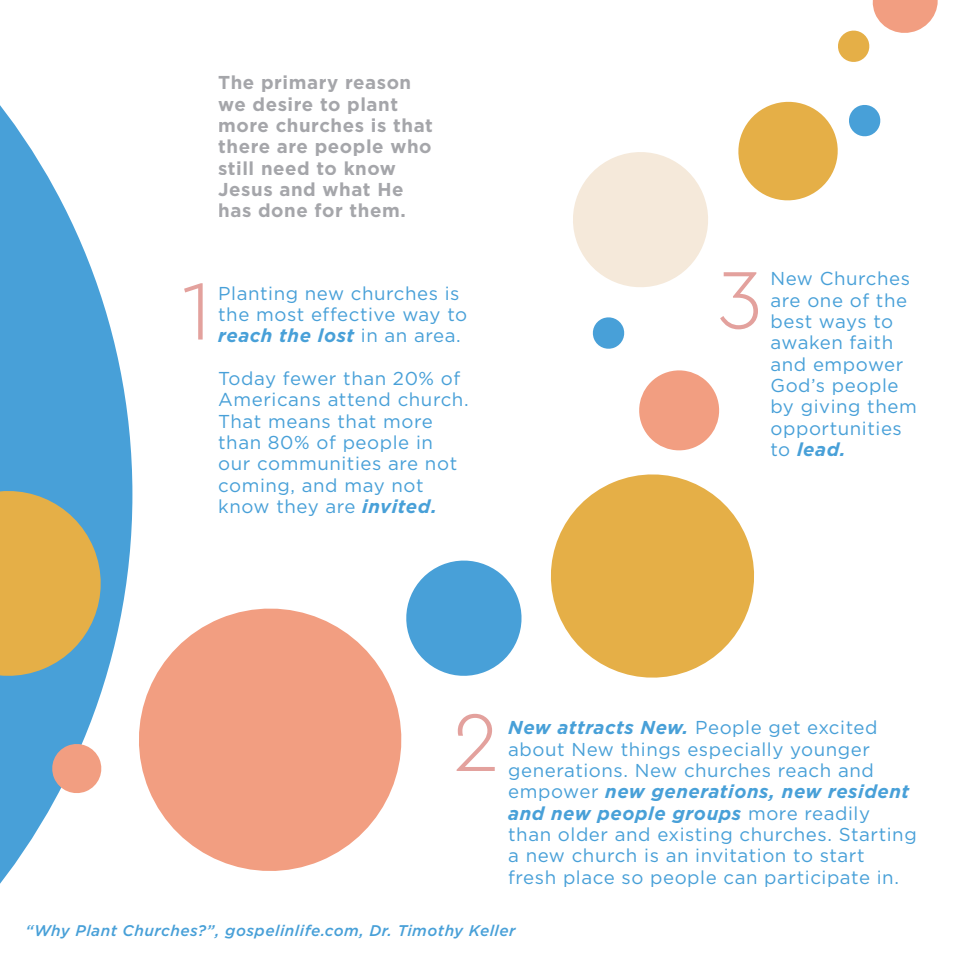
Jesus' disciples said, "Send the people away so that they can go to the surrounding countryside and villages and buy themselves something to eat." But he answered, "**YOU GIVE THEM SOMETHING TO EAT.**" Mark 6:36-37

Jesus multiplied his gospel ministry through His twelve disciples.

As the crowds gathered then, we too are at a divinely appointed moment at Providence. We are growing and people are coming from all around the region.

Providence's vision has always been to multiply our efforts to expand the kingdom of God in the greater Chester County area and beyond.

But why do we need more churches?



The primary reason we desire to plant more churches is that there are people who still need to know Jesus and what He has done for them.

1 Planting new churches is the most effective way to **reach the lost** in an area.

Today fewer than 20% of Americans attend church. That means that more than 80% of people in our communities are not coming, and may not know they are **invited**.

3 New Churches are one of the best ways to awaken faith and empower God's people by giving them opportunities to **lead**.

2 **New attracts New.** People get excited about New things especially younger generations. New churches reach and empower **new generations, new resident and new people groups** more readily than older and existing churches. Starting a new church is an invitation to start fresh place so people can participate in.

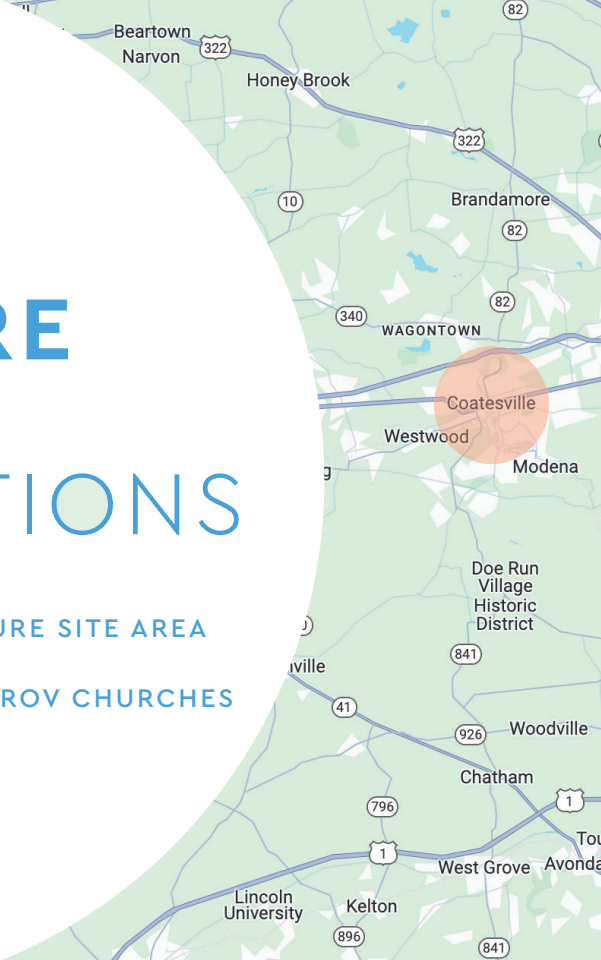
FUTURE PROV LOCATIONS

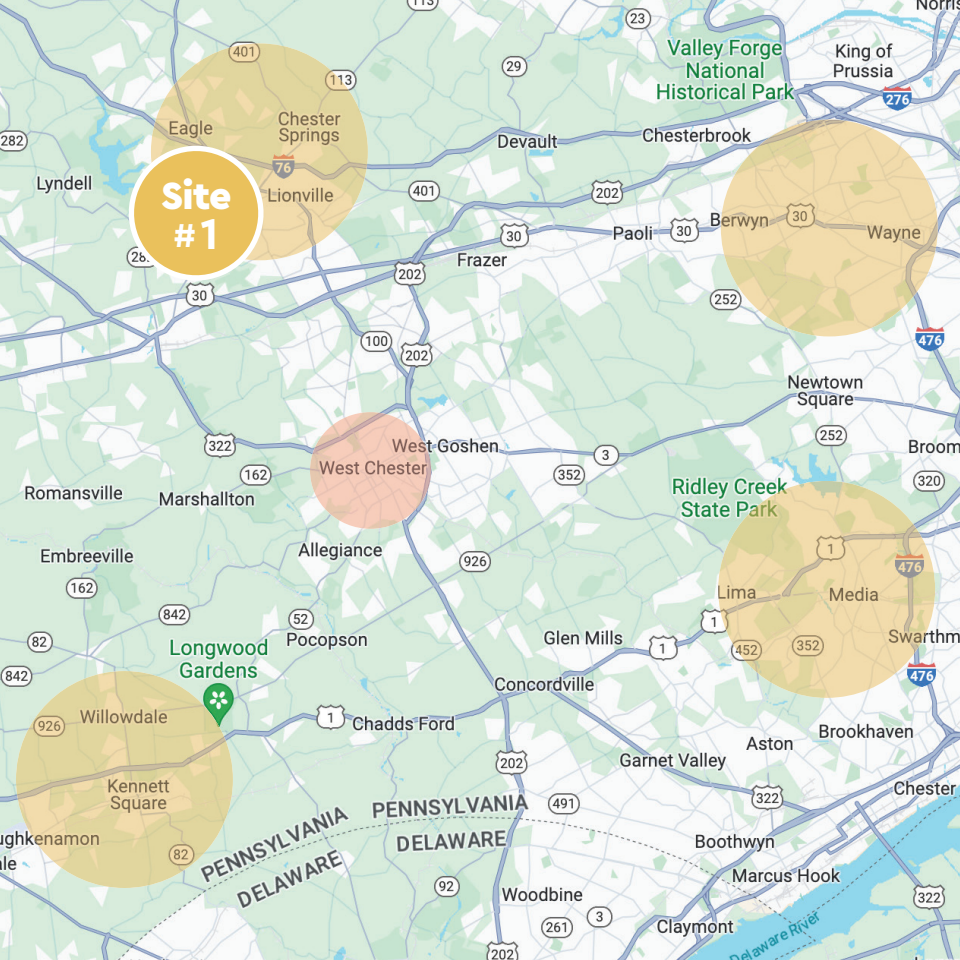


POTENTIAL FUTURE SITE AREA



ESTABLISHED PROV CHURCHES





THE STORY OF PROV



Prov leaders
begin praying
for a church
in living rooms

2005



First service
held at the
Journey on
Church Street

2006



Providence
purchases the
Westside
building

2008



The Westside
Community Center
opens after-school
program +
community garden

2010



Providence
Coatesville, our
first church plant,
begins meeting
weekly.



Prov on Hannum
Ave reopens after
renovations from the
Expanding the
Table Campaign.



2 new Providence
churches planted for
the glory of God.



2017



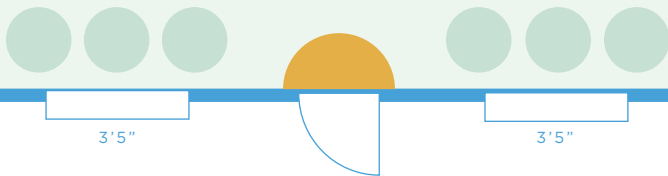
2020



2030

PROVIDENCE

WILL YOU HELP US
**PREPARE
A PLACE?**



Help us to raise **3.5 million dollars** to
plant two new Providence Churches.

PRAY • GO • GIVE

5'2"

18'0"

PRAY

Will you commit to praying regularly for this plant? For the leaders, for the core plant team, for those from Prov West Chester who will say yes to going? Watch for specific times of corporate prayer in the coming months.

To receive monthly emails, contact
sherry@providencewc.org

GO

Could God be calling you to **GO**? Making this shift has the potential for personal growth, community impact, and spiritual fulfillment even though it could be a sacrifice! Will you prayerfully consider giving up your seat at Prov West Chester to make room for more people in the WC area to attend Prov and be a part of the **GO TEAM**?

11'4"

2'6"

2'6"

GIVE

● To contribute any amount to our **\$3.5 million goal** visit ***providencewc.org/preparingaplace*** or to learn more.

● Contact Emanuele at ***emanuele@providencewc.org*** to make a contribution of stocks, bonds, CDs, other assets, or electronic funds transfer.

Learn more about the campaign breakdown on the *next page!*

2'6"

2'6"

11'4"

WHAT DOES YOUR FINANCIAL GIFT ACCOMPLISH?

LEADERSHIP

\$0.5 million

Church Planting
Network: Resources

Lead Pastor
1-year Residency



LOCATION

NORTH

\$0.5 million

Building Lease &
Other Operating
Needs

Kids & Youth
Ministry Leaders

Music Worship
Leader + other staff

LAUNCH STRONG

\$2.5 million

Pay off ProvWC
mortgage to free
up funds

Boost property
reserves for
ProvWC



HELP US to *Prepare a Place*
where more can hear the **good news!**



FAQ

GENERAL OVERVIEW

Why are we planting churches?

God commands and calls us to GO to the world and to make disciples. One of Prov's strategies to accomplish this mission is by planting churches. At this time, God has richly blessed us with financial and leadership resources to send and create new Prov churches with our vision and values.

Do we need more churches in our area?

Yes. Current statistics say that fewer than 20% of Americans attend church. This could mean that more than 80% of people in our communities are not coming to church, and may not know they are invited.

Where will these church plants be located?

The exact locations have yet to be determined, however, we do know that based on our desire to resource these new churches, locations will be no more than 20-30 minutes from Prov West Chester.

When will our first location launch?

We are praying and planning toward launching our first location in Eagle-Chester Springs-Lionville corridor in the fall of 2025.

Who is involved in the planning of Prov's Multiplication Vision and Strategy?

Our Multiplication Pastor, Todd Madonna, is leading a team. Decisions will be made at the elder level, the staff level and lay leader level.

What makes them Prov churches?

These new churches will share the Providence name, vision, values, and discipleship strategy. We will be one church family contextualized in new locations with live teaching and music.

Who do I ask if I have questions about the campaign?


Questions about the **fundraising campaign**, direct them to Bob Newman jrnewmanjr88@outlook.com

Questions about the **ProvNorth Church plant**, direct them to Aaron Chapman aaron@providencewc.org

Questions about **multiplication** in general, direct them to Todd Madonna Todd@providencewc.org

How will this impact Providence West Chester?

We will be actively sending together and praying throughout the planting process. Some individuals and families will choose to be sent, others will remain as senders. Our faith will be stretched and strengthened as a body as we walk through this journey of multiplication.



How is Prov Coatesville connected to this vision?

Strengthening Prov Coatesville and working towards a true Prov family of churches contextualized in multiple locations is among Prov's primary goals for multiplication.

What is ProvLaunch - the Gap Year Training Program?

ProvLaunch is a Gap Year Fellowship that will equip and empower young Christ-centered leaders as kingdom influencers.

PREPARING A PLACE FINANCIAL CAMPAIGN

When does the campaign start and end? What is the final date that I can pledge?

The church-wide campaign will be from March 9 - June 15, 2025. You can make a pledge until Sunday, June 15th, 2025.

What is a pledge?

A pledge is the total amount you plan to give, by faith, over the length of the campaign. We are asking people to consider a 2 year pledge. Pledges can be divided into weekly, monthly, quarterly, or annual giving, as well as one-time gifts. How you fulfill giving your full pledge amount is up to you, but having a sense of what amount you're committing to the campaign helps us track the progress of the campaign fundraising goal.

How will funds be allocated as they come in?

As funds are received we will allocate funds proportionately according to the main pillars of Launch Strong, Leadership, and Location.

What is the current amount of the mortgage? How did we get that amount?

As of June 30, 2024, the end of Prov's most recent fiscal year, the outstanding balance of bank debt totaled \$2,288,949. Prov utilized bank borrowings to finance the original acquisition of our building (2010), the acquisition of The Spot property at 415 W. Washington Street (2019), the expansion of our building (2020), and the acquisition of the digital billboard at 525 Hannum Avenue (2021).

Why are we paying off the mortgage?

When Prov utilized mortgage debt during the building expansion, it created a "house payment" consisting of principal and interest amounting to roughly \$200,000 per year until fully paid off in 2047. Paying off the mortgage by 2027 eliminates twenty years-worth of future house payments, thereby enabling us to allocate those amounts to funding the start up of location #2, and long-term ministry impact in West Chester and beyond. Therefore, \$2.3 million in debt reduction today frees up \$200,000 per year for 20 years, or \$4 million for long-term ministry growth.



FAQ CONTINUED

Will there be events or gatherings related to the campaign?

Yes, we will have 2 events that anyone can sign up for: a dinner on April 24th at Marshilton Inn and a breakfast at Providence on Saturday, June 7th. We will also hold a Town Hall Meeting on Sunday, April 27th after services in the Darlington Room that all are invited to attend to hear about the campaign.

How do I make a pledge to the campaign?

You can make a pledge toward the campaign by filling out a physical pledge card and mailing it back to Providence or dropping it off at the giving stations in the main sanctuary. In addition, you can go to our Preparing a Place webpage and click on the pledge link there.

When should I start giving my pledge?

Starting your pledge quickly allows for funds to be mobilized immediately for Gospel work. The pledge card will provide a space for you to share with us when you hope to begin so that we can track the two year time period accurately.

If I already give to Prov, should my pledge be separate?

First of all, if you already give regularly to Providence—THANK YOU! We are so

grateful for the generosity and sacrifice you make to support this ministry.

From a budget perspective, regular giving is used to pay for ongoing ministry expenses, not Preparing A Place. In light of that, yes, we ask that your pledge be separate from your regular giving. Please prayerfully consider how you can be a part of this campaign.

If I use PushPay to give to Providence, how do I make sure my pledge goes toward the project?

When using PushPay, make sure that “**Preparing A Place**” is selected under the “fund” option.

Is my gift tax-deductible?

Yes! Gifts to Preparing A Place are tax-deductible (to the extent of the law). A giving receipt will be provided each year contributions are made. In addition, you will receive a letter twice a year with your pledge progress.

Can I give assets other than cash?

Yes! We accept stocks, bonds, mutual funds, and other non-cash assets. Please contact ***Emanuele@providencewc.org*** for more information.

ProvNorth INFORMATION

When will our first location launch?

We are praying and planning toward launching our first location in the Eagle-Chester Springs area in the spring of 2026.

Who will be leading each new location?

Aaron Chapman has been hired as the Lead Planting Pastor. We are praying for a Core Planting Team who will help come alongside Aaron.

Will there be ProvKids? Youth ministry?

Yes, these will be available for kids, youth, and families.

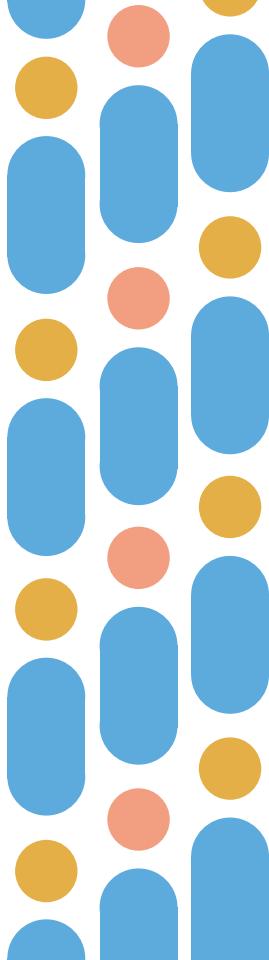
How can someone be involved now?

PRAY: Pray about locations, for leadership, for wisdom in all the decisions being made, and pray about how God wants YOU to be involved. We have monthly times of corporate prayer on specified Sundays at Prov.

What do we do if we have further questions?

You can email
Multiplication@providencewc.org.

Please go to our webpage for updates at
providencewc.org/preparing-a-place/



Father, Son and Holy Spirit,

We come before you with humble hearts as we prepare for the adventure of becoming a sending church.

- 1 Guide us in every step we take and with every detail of our church multiplication plan.
- 2 Grant us discernment to understand Your will and then the supernatural courage to follow it.
- 3 We pray for the people and financial resources needed to build a spiritually-engaging and attractive community where people encounter Jesus.
- 4 May this sending endeavor be a catalyst that inspires and empowers us to boldly share the message of Your grace and salvation.
- 5 We pray for gospel unity for our Providence family as we begin to pray, plan, and step out in faith.

May Your name be glorified through our efforts, and may we grow deeper together as we go to the world.

In Jesus' name, we pray.

Amen.

A decorative graphic in the bottom right corner consisting of several overlapping circles in blue, orange, and yellow colors of varying sizes.