



“Remember that you are dust...”

Welcome to installment two of Rye Presbyterian’s own version of HGTV – “Heaven’s Gate, Theologian’s Version.” The manses that your pastors live in may not be exactly “heaven’s gate,” but they are places of respite and retreat for us for which we are deeply grateful. The concern for the ongoing care and maintenance of these homes by our trustees is deeply appreciated.

Last month Dan highlighted the work done on the garage floor of the 900 manse where the Loves live. This month I turn your attention to the 890 manse where the Millers live. This stone home, located next to the columbarium, is the third oldest building on the church property, built in 1890. The basement walls, which are the foundation of the home, are made primarily of stone, with a few bricked areas where repairs have been made over the years. As you can imagine, after 133 years, the walls, and especially the mortar between the stones, were in need to some repair work. In some places you could simply run your fingers across the mortar joints between the stones and the mortar (primarily made with sand) would come falling out. A company was hired scrape out all of the old, loose mortar, fill in the joints with a concrete material, and then seal everything with a special waterproof sealant. On the days they were scraping, with the workmen wearing goggles and masks, the basement filled with a great cloud of gray dust.

This whole process, from scraping, to re-cementing, to applying a white sealant, is evocative of a Lenten discipline of some type – “Remember that you are dust, and to dust you shall return.” It is with that phrase that we began the 40 day Lenten journey on Ash Wednesday. We often think of Lent as a time of reflection and preparation as we look toward Holy Week and then Easter. Could it be that Lent is also a time for repairs, to be “repairers of the breach” as our One Great Hour of Sharing offering reminds us from Isaiah 58?

Where in our lives is it time to scrape away that which is no longer doing what it was meant to do? Where do we need once again to fill the gaps within the foundations of our lives

with the restoring cement or salve of God’s love, grace, and forgiveness – not only for ourselves but also for one another?

What must we do this Lenten season so that in the end, we too might be sealed in that covering of white? As the choir sang on Jazz Sunday last month in their anthem, “Down by the Riverside” – “I’m goin’ to put on my long white robe...”

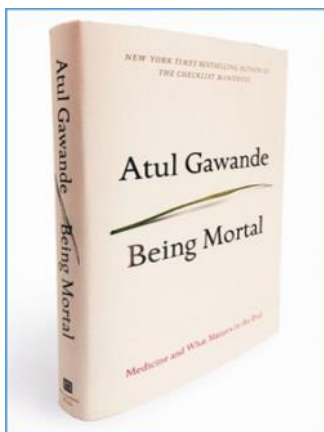
Here are the photos of the work being done and then completed. In this season when we hear again the words, “Remember that you are dust...,” what work is there to be done in the basement, in the foundation of your life? Frederick Buechner says this about the contemplative work of Lent. “To hear yourself try to answer questions like these is to begin to hear something not only of who you are but of both what you are becoming and what you are failing to become. It can be a pretty depressing business all in all, but if sackcloth and ashes are at the start of it, something like Easter may be at the end.” (*Whistling in the Dark*, p.75)

Peace,

What’s Inside?

- Page 2:** Book & Bible Studies
- Page 3:** One Great Hour of Sharing
- Page 4:** Coming Home, New Members, Volunteering
- Page 5:** Christian Education, Communion Workshop
- Page 6:** Music Notes
- Page 7:** Upcoming Events
- Page 8:** Women’s Association & Thrift Shop to be honored; Davidson Gordon Award
- Page 9:** Worship, Giving
- Page 10:** Monthly Meetings

Book & Bible Studies



LENTEN BOOK STUDY

***Being Mortal*, by Atul Gawande**

Tuesday evenings: March 7, 14, 21, and 28.

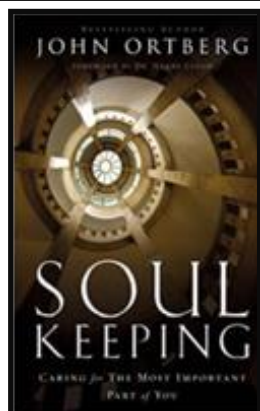
It's not too late to join in the discussion!

"Medicine has triumphed in modern times, transforming the dangers of childbirth, injury, and disease from harrowing to manageable. But when it comes to the inescapable realities of aging and death, what medicine can do often runs counter to what it should."

As we begin Lent with a visible reminder of our humanity and mortality, together we will dive into the realities of aging and the end of life—for ourselves, and those we love. Subtitled "Medicine and What Matters in the End," Dr. Gawande's powerful book takes a

fearless look at the limitations of modern medicine as life moves toward its end.

All are welcome as we gather to discuss the thought-provoking book and its intersection with the life of faith. Led by Dan Love. Please contact Dan dlove@ryepc.com if you would like to be part of this conversation.



Women's Discipleship Group

"Soul Keeping" by John Ortberg

All are welcome!

Tuesdays, 1:00 p.m., in the RPC Library

Please e-mail questions to:

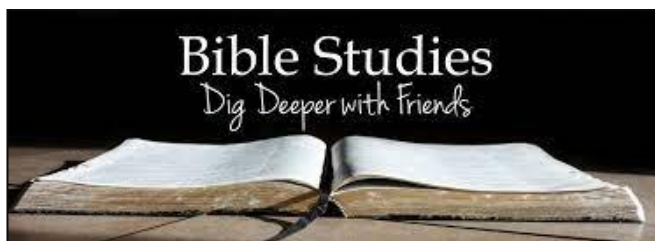
Alicia Baldwin

(alicia.baldwin@verizon.net)

or

Courtney Bennett

(Courtneybennett910@gmail.com)



Men's Bible Study

Sundays, March 5 & 19,

8:00 p.m., in the Library with Zoom option

We continue our conversation with Paul's letters and one another—all are welcome to join in! If you'd like to be on the email reminder list for this gathering, please contact Dan Love at (dlove@ryepc.com) for more information.

Monday Morning Bible Discussion

Mondays, March 6, 13, 20, & 27,

9:15 a.m., via Zoom

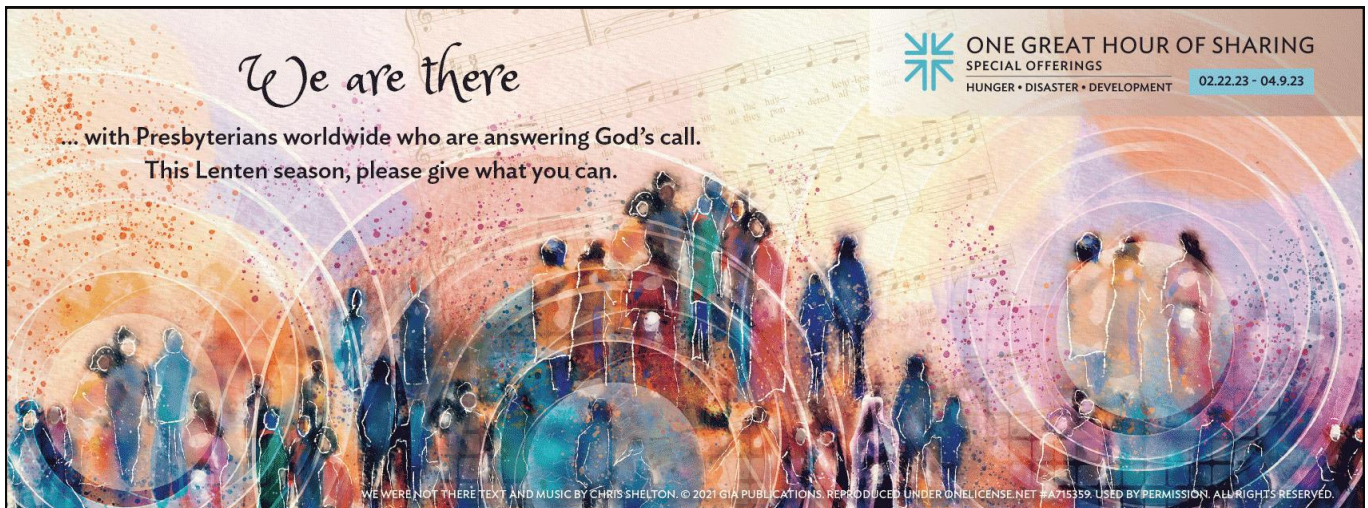
All are welcome to join in this on-going reading and discussion of the Gospel according to Luke. Please contact Dan Love - dlove@ryepc.com if you'd like to join in!

Women's Bible Study

**Saturdays, March 4 & 11, 10:00 a.m.,
2nd. Fl. Conference Rm. and via Zoom**

For further information,
contact Cynthia De Santis (cynthialwells@gmail.com).

One Great Hour of Sharing



The pandemic stretched the Church in many ways — but we are still here. We have continued to gather for worship. We have continued to build and shape community. We have continued to take care of one another. And we have continued to come together to serve those in need, both here in our own community and all over the world through our participation in the One Great Hour of Sharing offering.

In Isaiah 58, the prophet reminds us that God's people belong with those in need, releasing people from the bonds of injustice and also with the hungry whom we are to welcome into our homes. And in Matthew 25, Jesus calls the Church to be with those who are thirsty, imprisoned and suffering illness.

The three programs supported by One Great Hour of Sharing, the Presbyterian Disaster Assistance, the Presbyterian Hunger Program, and the Self-Development of People committee, all work to serve individuals and communities in need. From initial disaster response to ongoing community development, their work provides people with safety, sustenance, and hope. The One Great Hour of Sharing Offering provides us a way to share God's love with our neighbors in need.

Presbyterian Disaster Assistance (PDA) is the emergency and refugee program of the Presbyterian Church (U.S.A.). It enables our congregations and mission partners to witness to the healing love of Christ through caring for communities adversely affected by crisis and catastrophic event. Internationally, PDA works with Presbyterian and community-led partners to respond to natural disasters, including the recent earthquakes in Turkey and Syria. Last year PDA granted \$3.1 million in the US and 15 other countries. The Presbyterian Hunger Program (PHP) works to alleviate hunger and eliminate its root causes. In 2020, PHP gave 80 grants impacting 23 countries. The Presbyterian Committee on the Self-Development of People works with low-income communities to overcome oppression and injustice. In 2020, National SDOP entered partnerships with projects focused on advocacy, youth-led initiatives, skills development, farming, worker rights, immigration/refugee issues and capacity building. Through One Great Hour of Sharing, projects in economically poor communities around the world have had an opportunity to develop solutions to their own challenges.

One Great Hour of Sharing is the largest way Presbyterians come together to do mission and ministry with those whom we see are in need. Supporting the One Great hour of Sharing supports hunger, thirst, disaster recovery, refugee assistance, education, and community development for people in the United States and around the World. I invite you to visit the One Great Hour of Sharing website (pcusa.org/oghs) to find out more information on how your gift helps people all over the world, and offer prayers for the people and projects who receive this support. Please give generously. This offering will be received through Easter Sunday, April 9.



Coming Home, New Members, Senior Scholarship, Volunteering



COMING HOME IS Back!

Our Coming Home program began recently. Members and friends of the congregation are invited to join us for dinner on Thursday evenings at 7:00 p.m. Dinner is free! Just bring your welcoming spirit as you share a meal with our participants and other church members. For more information, contact John Miller, 914-967-0842, ext. 14 or at jmiller@ryepc.com. To volunteer to prepare a meal, contact our Meals Coordinator, Linda Otness, at otness.linda@gmail.com. We look forward to hearing from you soon!

THE PETER BISHOP SCHOLARSHIP SENIOR HIGH SCHOOL STUDENTS

Since 1968, Rye Presbyterian Church has awarded grants to graduating high school seniors who are going on to college studies. The award is in memory of Peter Bishop, son of a former pastor of RPC.

The number of grants and the amounts awarded each year vary, but it is a one-time award given to students demonstrating academic promise and financial need, with priority consideration given to those seniors who have been active in the life of Rye Presbyterian Church.

If you are a Rye High School senior, application for this scholarship is done through the guidance office at RHS.

If you are not a student at Rye High School, but wish to apply for the scholarship, please contact [Rev. Love](#) for more information.



VOLUNTEER FOR DINNER AT NOON

Dinner at Noon is a volunteer collaboration between local faith based groups including Rye Presbyterian Church, Community Synagogue, and Resurrection who serve a hot meal at the Carver Center every Saturday to those in need. Each group manages several Saturdays during the year.

RPC's upcoming dates are **April 15** and **June 3**. We are in need of 5 volunteers for each date from 9:30 a.m. until 12:30 p.m. Volunteers will set tables, plate food, serve meals to guests, bag meals to go and clean up. Masks are recommended for all volunteers.

Please contact Gabby McCree (gabmccree1@gmail.com) if you are interested in helping. Families and children ages 10 and up are welcome to volunteer together!

If you are not able to volunteer in person, please consider donating nut-free baked goods (homemade or store bought) to serve with the meal.

NEW MEMBER WELCOME DISCUSSIONS

Perhaps you've been coming to RPC a long time, or perhaps you are brand new to the area or the church. Either way, if you've thought about taking a further step into the life, community, and mission of RPC, this is a great time to explore it. All those who are interested in finding out more about what it means to be a member of the Rye Presbyterian

Church are invited to take part in the New Member classes. The classes are Sundays, March 5 and 12 immediately following worship, in the church library. Childcare will be available if needed.

In these classes, we will explore what it means to be a Presbyterian in general, and what it means to actively live out our faith together as a part of this particular church. In addition to the Sunday classes, for those choosing to join the church, there will be a meeting with the leadership of the church Sunday evening, March 26 at 7:00 p.m. This is a time to meet the officers of the church and for the Session to meet briefly to approve the new class for church membership. Public welcome and recognition of the new members will take place during worship on Sunday, April 2.

Anyone wishing to find out more about joining the church should contact Peggy Berretta in the church office – pberretta@ryepc.com or 967-0842 x11.

**Become
Part of
Our
Church
Family**

VOLUNTEERS NEEDED

Do you like party planning? We're looking for a few people to help us plan this Spring's celebration commemorating the 25th, 10th, and 5th anniversaries of Revs. Dan Love, John Miller, and Jean-Paul Marshall serving Rye Presbyterian Church.

If you are interested, please email Sue Parish— (susan.parish@yahoo.com). We'll have a kickoff meeting sometime in late February. Watch the Sunday bulletin for more details.

-Katherine Olsen (*Trustee President*)

-Katy Ridley (*Clerk of Session*)

-Sue Parish (*Deacon President*)



SAVE THE DATE!
CHURCH AND JUSTICE SERVICE
Sunday, April 16, 10:00 a.m.

Christian Education, Confirmation, Communion Workshop



This March we continue our journey through our Sunday School curriculum called **Celebrate Wonder**, which seeks to engage our children's natural sense of wonder and curiosity to help them understand God's love. Through opportunities for reflection, music, engaging activities, and spiritual practices, our children will be given a safe space to ask big questions and help them live into their identities as beloved children of God. Below are the stories we are engaging this month:

Mar. 5: Luke 21:1-4
(The Widow's Coins)

Mar. 12: Luke 10:25-37
(The Good Samaritan)

Mar. 19: Matthew 7:24-27
(The Two Houses)

Mar. 26: Matthew 13:1-9
(The Sower and the Seed)

We invite families to engage these stories together at home. This curriculum comes with its own Take-Home pages that invite families to read, wonder, and pray together. These pages will be sent home with your children every Sunday morning. We will also include these pages in our **weekly Christian Ed newsletter**. If you would like to receive our newsletter, please contact **Rev. JP**. (jmarshall@ryepc.com).

Middle School Connection

All 6th – 8th graders are welcome at RPC's Connection!

- **Wednesday, March 8 & 29 @ 5:30 p.m., Youth Rooms**
We'll take time to catch up over pizza, play some games, and reflect on the Lenten season together!

Let **Rev. JP** - (jmarshall@ryepc.com) know if you'd like to be on the **parent email list**. All updates about Connection gatherings will also be put on the website each month.

Updates through Remind!
Text @rpecon to 81010 or sign up at <https://www.remind.com/join/rpecon>.

YOUTH GROUP High School Youth Group

All 9th – 12th graders are welcome at RPC's High School Youth Group!

- **Sunday, March 5 @ 6:00 p.m., Youth Rooms:** Join us as we meet in the church kitchen to prepare a meal together for the Coming Home program that will be held the following Thursday. We will learn to cook a recipe together and discuss the importance of the Coming Home program held by our church.

- **Thursday, March 9 @ 6:00 p.m., RPC Kitchen:** Join us as we help serve the meal of the evening and share table fellowship with the participants and mentors attending the Coming Home program. This is a great way for our youth to participate in one of our community's ministries!

- **Sunday, March 26 @ 6:00 p.m., Youth Rooms:** Join us at The Table (formerly "Vespers"), where we will gather around a meal together for reflection, conversation, and games. Everyone is encouraged to bring a favorite dish/dessert to share! Please let Rev. JP (jmarshall@ryepc.com) know if you plan on joining us and if you are bringing food.

We are on Instagram!

Username: ryepresyouth

Updates through Remind!

Text @ryepre to 81010 or sign up at <https://www.remind.com/join/ryepre>.



Class meets this month on Sundays, March 5 and 26 at 5:00 p.m. in the Westminster Room. First drafts of your Statements of Faith are due at the end of the month!



NOLA Bingo

Fun for all ages!

Youth Mission Trip Fundraiser
Sunday, March 6, 11:15a.m.-12:30 p.m.,
in the Assembly Room.

Prizes will be given to winners and snacks provided for all!
If you do not wish to play Bingo, but would like to contribute, we will gratefully accept contributions.

All proceeds from the event go toward the Youth Mission Trip to New Orleans.



COMMUNION WORKSHOP

Saturday, March 25,
10:00-11:30 a.m.

Grape Juice and Bread ... at church?
What is that all about?

If your child or children have been curious about the Lord's Supper, this is a great opportunity for children to learn more about it, to be officially welcomed at the communion celebration of the church, and for you to grow in your faith together.

On Saturday, March 25, from 10:00-11:15 a.m., children in the second through fifth grades are welcome to come with a parent to this special workshop. Together we will explore the meaning of the sacrament and how we celebrate it here at Rye Presbyterian.

Space is limited, so please sign up by contacting Rev. Love (dlove@ryepc.com).

Music Notes



Children's and Youth Music Programs to Begin Anew on March 8

Children (grades 1 through 5) and middle-school youth (Grades 6 through 8) are invited to be groundbreakers as we resume – begin anew, in many ways – our music ministries with them. We'll come together to sing, move, explore rhythms and pitches, play some instruments, and create some musical expressions of our own.

I will lead these sessions, always with another adult in the room (per church policies regarding children and youth), with the hope that each group will grow in numbers and vitality.

Children will be together each Wednesday (except for April 5), from 3:30 – 4:15 p.m., from March 8 through June 7. Youth will gather on the Wednesdays when there is Connection (the middle school youth group), from 5:00 – 5:30 p.m. Both groups will meet in the Choir Room.

Please let me know (jcharneski@ryepc.com) or 914-967-0842, ext. 16) if you or your child/youth plans to attend. Be a part of something new!

Chamber Music Series Program on March 26: Birds in Song and in Story

An Event for All Ages – Families Encouraged to Attend!

The next program on the Chamber Music series will be inter-generational in focus. Come on Sunday, March 26, at 3:00 p.m., for a wonderful afternoon of stories and music about birds. The highlight will be two stories – *Ping the Duck* and *Don't Let the Pigeon Drive the Bus* – told while music composed specifically for them is played. It's an opportunity for all, but, especially for families and children to hear new music along with some standards ("Spring" from *The Four Seasons*; "The Swan" from *Carnival of the Animals*) and see and hear many instruments: violin, viola, flute, oboe, English horn, and cello.

RPC members and friends and RPNS parents/guardians and staff are offered a special admission rate of \$20 per adult, with children and students admitted free of charge! See the flyer (printed elsewhere) for some more information. Come, and invite your friends to join you!

Chamber Music at Rye Presbyterian Church

Michael Roth, artistic director

presents

Birds

in Song and Story

an all-ages event!



Michael Roth, violin; Sarah Adams, viola; Susan Rotholz, flute; Andrew van der Paardt, oboe & English horn; Eliot Bailen, cello

Sunday, March 26, 2023

3:00 p.m.



Ping the Duck
and

Don't Let the Pigeon Drive the Bus,
with music by Eliot Bailen, told by Susan Rotholz,
interspersed with movements from
"The Bird" quartet (Haydn; adapt.),

"Spring" from *The Four Seasons* (Vivaldi; adapt.)
and "The Swan" from *Carnival of the Animals* (Saint-Saëns; adapt.)



Admission: \$20

(special rate for RPC members and friends & RPNS parents/guardians and staff);

FREE for children and students

to reserve your seats, please call Jason Charneski at 914-967-0842, ext. 16,
or send him an email at jcharneski@ryepc.com.



BE A PART OF IT!

**CHILDREN'S & YOUTH MUSIC PROGRAMS
TO BEGIN ANEW ON**

MARCH 8

Join your friends: You'll engage your
voice, hands, feet, mind, and heart!

Children (Grades 1 – 5):
3:30 – 4:15 p.m., Wednesdays

Youth (Grades 6 – 8):
5:00 – 5:30 p.m.,
on the Wednesdays
when Connection* meets.
(* = Middle School Youth Group)

Both groups will meet in the Choir Room.

Contact Jason Charneski
(jcharneski@ryepc.com)
to sign-up or to ask questions.

Upcoming Events



On Sunday, March 26, RPC will be hosting a food packing event with Food2GrowOn. The packing of spring vacation bags will take place at 1:00 p.m. at Congregation KTI, at 575 King Street in Port Chester. The packing should take approximately 1-1/2 hours. The food bags will be given to Port Chester elementary school children to bring home during their spring vacations. We need student and adult volunteers to help with the packing. RPC members are also asked to purchase and send food items via Amazon for the event. (Please [click here](#)).

For more information on Food2GrowOn, [click here](#).

THRIFT SHOP

**THRIFT SHOP
SAVE THE DATE**

**Drive-By, Drop-Off Donation Day
Saturday, March 4, 10am-12pm**

Please drop off gently used items by the Grape Arbor.
Please enter at RPNS entrance on Milton.

Your donations help us to help others.
Questions? Email Ryethrift10580@gmail.com.

The Thrift Shop is open Thursdays, 10:00 am-1:00 pm.
For information on donations,
please check the church website.
You can also email the shop at
RyeThrift10580@gmail.com.
Drop-Off Times: Wednesdays and Thursdays,
10:00-11:30 a.m.



Rye Women's Interfaith Conference
Saturday, April 1, 2023, 7:30 PM
Coffee House
Community Synagogue of Rye
200 Forest Avenue, Rye, NY 10580



Our Better Angels: Lapidus & Myles - Music for People of Conscience
Lapidus & Myles is a collaboration between two faith-based musicians in Atlanta. Micah Lapidus is a reform rabbi and composer-in-residence at The Temple. Melvin Myles is a leading soloist with the Historic Ebenezer Baptist Church Choir, former pulpit of MLK Jr. Evocative of the long-standing ties between these communities, their music and message is all about bringing people together in a spirit of love, respect, peace, and justice.

Sponsored by Rye Women's Interfaith Committee

To make a reservation click here.

**Please direct your questions to info@comsynrye.org
in collaboration with**

**Community Synagogue, Rye Presbyterian Church,
Christ's Church of Rye, Resurrection Church of Rye.**

Women’s Association & Thrift Shop to be Honored Davidson Gordon Award

MARK YOUR CALENDARS AND JOIN US!


As The RPC Women’s Association (RPC WA) and Thrift Shop are being honored by the Youth Shelter Program at Westchester at their Annual Gala on Friday May 5, 2023 at the Greentree Country Club! Cocktails are from 7:00pm. Tickets are \$225 per person with a table of 10 until April 1st, and are available online through this link <https://bit.ly/YSOWGALA2023>

Our RPC Community is being honored for our long-time support of The Youth Shelter Program which works to transform justice through restorative practices and alternatives for youth. They are changing lives. Together our mission to help local families continues to grow. The other 2 honorees are NY Presbyterian Westchester and the Honorable Judge Lyndon Williams.

Let’s all celebrate this honor for RPC, and support The Youth Shelter, by coming together for a fun-filled evening of fellowship on May 5th.

If you have any questions, please contact either Co-President of the RPC WA: Kathryn Stack 914-420-9674 or Terry Ann Weil 917-597-2144.

Please note in your response that you are celebrating with our RPC table. See the invitation below!

	<p>Youth Shelter of Westchester - 45th Gala</p> <p>Dear Friends & Family of the Youth Shelter Program of Westchester, We're pleased to announce this year's 45th Anniversary Gala, Transforming Justice. We invite you to join us for a 7:00 pm cocktail hour, followed by an evening of celebration as we usher in 45 years of creating equitable opportunities and valuable experiences to elevate justice for youth. Since its inception, YSOW has been a pioneer in providing an alternative to incarceration for young people involved in the criminal legal system. We operate under two main program structures: Residential & Community-based. Residential - Our residential program is operated through a 12-bed facility that serves young men ages 18-24. The YSOW model is unique in its emphasis on treating the whole person with a wide array of services within a structure of discipline and accountability. With an outstanding record of reducing recidivism, YSOW has demonstrated that its nontraditional approach effectively improves public safety, saves public dollars, and redefines the lives of young people involved in the legal system.</p>
--	--

Let’s all celebrate this honor for RPC, and support The Youth Shelter, by coming together for a fun-filled evening of

Presenting Alonso Osorio, recipient of this year’s Davidson Gordon Award for Quiet Service.



Worship, Giving

Weekends in March

Sunday, March 5

- 9:15 a.m. Chancel Choir Warm-Up
- 10:00 a.m. Worship in the Sanctuary / Hybrid - Communion
- 11:00 a.m. New Member Class, Library
- 11:15 a.m. NOLA Bingo, Assembly Room
- 11:15 a.m. Chancel Choir Rehearsal
- 5:00 p.m. Confirmation Class, Westminster Room
- 6:00 p.m. NOLA Prep Meeting, Assembly Room
- 8:00 p.m. Men's Bible Study, Library

Sunday, March 12

- 9:15 a.m. Chancel Choir Warm-Up
- 10:00 a.m. Worship in the Sanctuary / Hybrid
- 11:00 a.m. New Member Class, Library
- 11:15 a.m. Chancel Choir Rehearsal

Sunday, March 19

- 9:15 a.m. Chancel Choir Warm-Up
- 10:00 a.m. Worship in the Sanctuary / Hybrid
- 11:15 a.m. Chancel Choir Rehearsal
- 8:00 p.m. Men's Bible Study, Library

Sunday, March 26

- 9:15 a.m. Chancel Choir Warm-Up
- 10:00 a.m. Worship in the Sanctuary / Hybrid
- 11:15 a.m. Chancel Choir Rehearsal
- 3:00 p.m. Chamber Music Concert
- 5:00 p.m. Confirmation Class, Westminster Room

**Worship in the Sanctuary
In Person**

As conditions and guidance change, please [click here](#) for updated Covid protocols.

**Sunday Services also
Online via Live Stream!**

Bulletin and instructions on joining via Zoom or YouTube are on the church website:

ryepc.com/worship/worship-at-rpc/

**DIAL IN TO
SUNDAY WORSHIP!**

To attend worship by using your phone, call 1-646-558-8656 then enter this Meeting ID: 560 770 303

8:30 A.M. WORSHIP UPDATE

Please note that the Worship and Music Committee has decided that 8:30 am worship will be paused for now based upon attendance patterns.

WILLING TO HELP ON SUNDAY?

We welcome those who would like to help out on Sunday mornings by joining the crew of people who read scripture, usher, or serve communion. If you are interested in doing so on an occasional basis, please with one of the pastors or Gary Gibson (ggibson@med.cornell.edu), chair of the Worship and Music Committee.



Online donation options are available on the RPC Website Giving page.

To access, go to ryepc.com/give or scan the QR Code to the right with your cell phone.



Please contact Maida Robinson:

mrobinson@ryepc.com

if you have any questions or need assistance.



*Ezra Fox Marshall,
February 14,
son of Susie &
Jean-Paul Marshall*

In Memoriam

- Rebecca (Becky) McDermott, January 26*
- Beatrice O'Connell, February 4,
Mother of Suzanne Yarrow*
- Ray Hensel, February 8,
Father of Dolores Eyler*
- David Florence, February 13*
- Patrick Lin, February 22,
Father of Gloria Holtman*



March Meetings

MARCH MEETINGS



On Sunday, January 29, volunteers packaged over 10,000 meal boxes. The meals we put together will be used as needed around the world.



Board Meetings

Deacons: Wednesday, Mar. 8, 7:30 p.m., Westminster Rm/Zoom

Trustees: Wednesday, Mar. 15, 7:30 p.m., Library & Zoom

Session: Wednesday, Mar. 22, 7:30 p.m./Hybrid,, Westminster Room

Lenten Book Study

Being Mortal: Tuesdays, Mar. 7, 14, 21, & 28, Library, Hybrid

Bible Studies

Men's Bible Study: Sunday, Mar. 5 & 19, 8:00 p.m., Library with Zoom option

Monday Morning Bible Discussion: Mar. 6, 13, 20, & 27, 9:15 a.m., via Zoom

Women's Bible Study: Saturdays, Mar. 4, 11, 18, 25, 10:00 a.m., 2nd fl. Conference Room & via Zoom

Women's Discipleship: Tuesdays, Mar. 7, 14, 21, & 28, 1:00 p.m., Library

Children & Youth

Confirmation: Mar. 5 & 26, 5:00 p.m., Westminster Room

Middle School Connection:

-Wednesdays, Mar. 8 & 29, 5:30 p.m., Youth Rooms

High School Youth Group:

-Sunday, Mar. 5, Coming Home prep, Kitchen

-Thursday, Mar. 9, Coming Home, Kitchen/Westminster Room

-Sunday, Mar. 26, 6:00 p.m., "The Table" (formerly Vespers) Youth Rooms

Music

Chancel Choir: Meet 9:15 a.m., sing at 10:00 a.m. service, rehearsal following service (11:15 a.m.-12:30 p.m.)

Children's Music: Wednesday, Mar. 8, 15, 22, & 29, 3:30 p.m., \ Choir Room

Youth Music: Wednesday, Mar. 8 & 29,, 5:30 p.m., Choir Room

Other Church Meetings

Coming Home Dinner: Thursdays, 7:00 p.m., Westminster Room, Library, Kitchen

Mission & Outreach: Wednesday, Mar. 1, 7:30 p.m., Library/Hybrid

New Member Discussions: Sundays, Mar. 5 & 12, 11:15 a.m., Library

New Member Dessert with Session: Sunday, Mar. 26., 7:00 p.m., Library

NOLA Bingo, Sunday, Mar. 6, 11:15 a.m., Assembly Room

Personnel Committee: Monday, Mar. 6, 7:30 p.m., Conf. Rm.

3Ts: Thursday, Mar. 16, 10:00 a.m., via Zoom

Contact [Jane Mickatavage](#) (914-967-8622) or

[Nancy Steed](#) (914-328-9658).

Stephen Leaders: Monday, Mar. 20, 7:30 p.m., Conf. Rm.

Stephen Ministry Supervision: Monday, Mar. 13, 7:00 p.m., Westminster Room/Hybrid

Thrift Shop: Thursdays, 10:00 a.m.-1:00 p.m.

Drive-By, Drop-Off Donations: Saturday, Mar. 4, 10:00 a.m. – 12:00 p.m; Please enter at RPNS-entrance on Milton.

: