

## THE GATHERING

### PRELUDE FOR ORGAN

Fughetta in D

Felix Mendelssohn (1809-1847)

### CHIMING OF THE HOUR

### GREETING AND PASSING OF THE PEACE

Pastor: May the peace of the Lord be with you.

**People: And also with you.**

Pastor: Let us greet one another with the peace of Christ.

### PEALING OF THE BELL AND SILENT PRAYER OF PREPARATION

*My Lord God, I have no idea where I am going. I do not see the road ahead of me. I cannot know for certain where it will end. Nor do I really know myself, and the fact that I think I am following your will does not mean that I am actually doing so. But I believe that the desire to please you does in fact please you. And I hope that I have that desire in all that I am doing. I hope that I will never do anything apart from that desire. And I know that if I do this you will lead me by the right road, though I may know nothing about it. Therefore will I trust you always though I may seem to be lost and in the shadow of death. I will not fear, for you are ever with me, and you will never leave me to face my perils alone. – Thomas Merton*

### ✠CALL TO WORSHIP (from Psalm 80)

Pastor: Give ear, O Shepherd of Israel, you who lead Joseph like a flock!

**People: You who are enthroned upon the cherubim, shine forth**

Pastor: Turn again, O God of hosts; look down from heaven, and see;

**People: But let your hand be upon us, making us strong.**

Pastor: Then we will never turn back from you; give us life, and we will call on your name.

**All: Restore us, O LORD God of hosts; let your face shine, that we may be saved.**

### ✠HYMN (see interior back cover)

They Did Not Build in Vain

Leoni

### ✠PRAYER OF THE DAY

#### PRAYER OF CONFESSION

Jesus, you call us to run with perseverance the race marked out for us, fixing our eyes on you. But we admit we don't always know how to persevere through hardship. At times we get stuck in complaint, self-pity, or discouragement. Our hearts can quickly sink into disappointment with ourselves, others, and you. Forgive us, O God.

✠ *please stand as you are able*

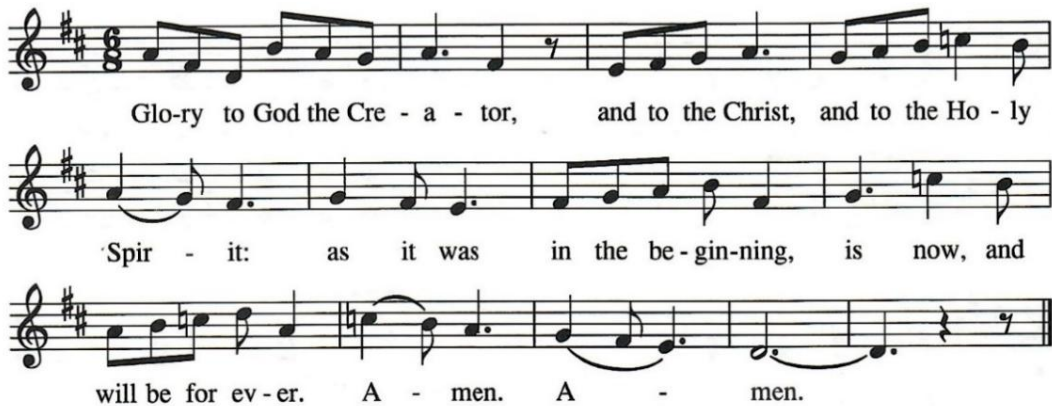
*Silent prayers of confession are offered.*

Remind us, Lord, that we are surrounded by so great a cloud of witnesses: a host of heavenly and earthly support of those who run this race alongside us. Our mentors in the faith, our loved ones who've passed on, and our spiritual family near and far – all help carry us through. And you, too, pray on on our behalf. So help us throw off everything that hinders us, and the sin which so easily entangles, and run with perseverance this race you've marked out for us, fixing our eyes always on you. In your name we pray, Amen.

## DECLARATION OF FORGIVENESS

### ✦ GLORIA PATRI

Ronald A. Nelson, 1986



*Latin, 3<sup>rd</sup>/4<sup>th</sup> centuries; transl.*

## CHILDREN'S MESSAGE

### THE WORD

#### PRAYER FOR ILLUMINATION

Leslie Bradford, *lay reader*

#### EPISTLE LESSON 1

Hebrews 11:29-38

(Pew Bible, New Testament page 226)

*after each reading:*

Reader: The Word of the Lord.

People: Thanks be to God.

#### EPISTLE LESSON 2

Hebrews 11:39 – 12:1-2

(Pew Bible, New Testament, page 226)

#### SERMON

"The Journey of Faith is Not a Round Trip"

Rev. Pattison

### THE RESPONSE

#### ✦ HYMN 377

I Want to Walk as a Child of the Light

*Houston*

✦ **AFFIRMATION OF FAITH** *(From The Westminster Confession, 1643-1646)*

Pastor: People of God, let us affirm our faith together:

**All:** The grace of faith... is the work of the Spirit of Christ in our hearts; and is ordinarily wrought by the ministry of the Word: by which also, and by the administration of the sacraments, and prayer, it is increased and strengthened. By this faith, a Christian believes what is revealed in the Word, for the authority of God Himself speaks therein; and we embrace the promises of God for this life, and that which is to come. But the principal acts of saving faith are accepting, receiving, and resting upon Christ alone for justification, sanctification, and eternal life, by virtue of the covenant of grace. This faith is different in degrees, weak or strong; may be often and in many ways assailed and weakened, but gets the victory; growing up in many to the attainment of a full assurance through Christ, who is both the author and finisher of our faith. Amen.

**PRAYERS OF THE PEOPLE AND THE LORD'S PRAYER**

Our Father, who art in heaven, hallowed be thy name. Thy kingdom come, thy will be done, on earth as it is in heaven. Give us this day our daily bread; and forgive us our debts, as we forgive our debtors; and lead us not into temptation, but deliver us from evil. For thine is the kingdom, and the power, and the glory, forever. Amen.

**CALL FOR THE OFFERING**

Please visit [ryepc.com/give/](http://ryepc.com/give/) to give online, detailed on the back cover. If you do not have your offering with you today, "Gift cards" are in the pews so that you may participate in this portion of worship by placing one in the offering plate.

**MUSIC FOR ORGAN**

Pastorale

Peter C. Lutkin (1858-1931)

✦ **DOXOLOGY**

*Old Hundredth*

*This setting is printed in the hymnal at no. 606.*

**Praise God, from whom all blessings flow;**

**Praise God, all creatures here below;**

**Praise God above, ye heav'nly host;**

**Praise Father, Son, and Holy Ghost. Amen.**

*—Thomas Ken, 1674; alt.*

✦ **PRAYER OF DEDICATION**

**THE SENDING FORTH**

✦ **HYMN 307**

God of Grace and God of Glory

*Cwm Rhondda*

✦ **CHARGE AND BENEDICTION**

**POSTLUDE FOR ORGAN** *(All are invited into the chancel to listen to the postlude.)*

God of Grace

Paul Manz (1919-2009)

## FOLLOWING WORSHIP

*Coffee and refreshments will be in the Chapel Narthex following worship. All are welcome!  
(The Chapel Narthex can be found by exiting the front left doors.)*

---

## *Welcome to Rye Presbyterian Church*

### *General Information*

If you are a guest today, we welcome you and hope you are enriched and inspired by this time of worship. You may go to [ryepc.com/im-new/](http://ryepc.com/im-new/) and fill out the welcome form online.

If you or a family member need to step out of the sanctuary during worship, please feel free to do so. There is live audio from the service in the narthex at the back of the sanctuary and live video in the church library.

### *Children and Childcare*

Our team of dedicated staff and volunteers is available to care for children 3 months to 3 years old while parents attend worship services. Childcare can be found on the first floor of the Education Wing.

If you have any questions, please reach out to Anne Halloin at [ahalloin@ryepc.com](mailto:ahalloin@ryepc.com).

To help children feel welcomed and engaged during worship, Rainbow Bags – filled with crayons, books, and coloring pages – are located in boxes at each sanctuary entrance door.

Please return Rainbow Bags following worship.

### *Hearing Assistance*

The sanctuary is equipped with an induction loop assistive listening system. To access the system, please switch your hearing aid setting to “T” (telephone).

### *Grace Notes Newsletter*

Pick up one of our free full-color monthly church newsletters, available at every sanctuary entrance: includes photos, updates, articles, and devotions from pastors. It is also available via email subscription, along with our website’s resources page at [ryepc.com/grace-notes-newsletter/](http://ryepc.com/grace-notes-newsletter/).

### *Summer Staff Notice*

Please note that Rev. Love is on vacation. He will return on Tuesday, September 2. If you have a pastoral emergency or concern during this time, please contact Rev. Cari Pattison by email at [cpattison@ryepc.com](mailto:cpattison@ryepc.com), or by phone at 914-967-0842, extension 14.

Jason Charneski is on vacation. He, too, will return on Tuesday, September 2. During these weeks, we’re pleased to welcome Eric Birk as our substitute organist.

### *Participants in Today’s Service*

Edward Avery, Carl Friedrich, and Connie McBroom, *Ushers*.

## DEDICATIONS

*The chancel flowers are given to the Glory of God.*

## TODAY

Walking Group, Slow-Cooker Sundays, 5:00 p.m., Rye Nature Center Entrance

## THIS WEEK

### Monday, August 18

9:00 a.m. Walking Group: Moderate Mondays – Sanctuary Doors

### Tuesday, August 19

11:00 a.m. Stephen Leaders – Conference Room

### Wednesday, August 20

5:00 p.m. Fruit of the Spirit – Pattison Manse: 890 Boston Post Road

### Sunday, August 24

5:00 p.m. Walking Group: Slow Cooker Sundays – Sanctuary Doors

## GENERAL NOTICES

**Helping Hands Rye**

**MISSION BACKPACK**



**Tue, Aug 19**  
**9:30 - 12**

**Wed, Aug 20**  
**10 - 12**



**Rye MIDDLE School Gym**



[www.HelpingHandsRye.org](http://www.HelpingHandsRye.org)



# **WALKING GROUPS**

## **MODERATE MONDAYS**

August 4, 11, 18, and 25

9:00-10:00 a.m. starting in front of the Sanctuary Doors

**Brisk walk, rain or shine!**

Good leash-walker-dogs welcome.

We'll explore a number of  
different routes around town.

## **SLOW-COOKER SUNDAYS**

August 10, 17, and 24

5:00-5:45 p.m. starting at the Rye Nature Center

873 Boston Post Rd, Rye, NY 10580

**Light and easy pace, enjoying nature and conversation.**

No dogs. Walks are cancelled for heavy rain.

We'll conclude with a short scripture and prayer.

Rye Presbyterian Church Summer Session



# FRUIT OF THE SPIRIT

**Wednesdays, August 20 and 27, from 5:00-6:00 p.m.**

Come to one session, or come to all!



## **Co-Pastor's Manse**

890 Boston Post Road, Rye  
(right next to the Church)

Enjoy a relaxed evening of light food and fellowship with  
a brief devotion & question on the Fruit of the Spirit.

On the day of, we'll decide whether we're  
outside on the patio or indoors with AC  
depending on the weather.

RSVP to Cari at [cpattison@ryepc.com](mailto:cpattison@ryepc.com)

Rye Presbyterian Church Summer Session





# **SUMMER SERVICE OPPORTUNITY**

## **REACH OUT AND READ**

### **AT THE OPEN DOOR FAMILY MEDICAL CENTER IN PORT CHESTER**

Do you love reading to children? Reach Out and Read is a national literacy program designed to take place in medical offices. The goal is to improve kindergarten readiness for children who are economically challenged and to provide a foundation for success by incorporating books into pediatric care and encouraging families to read aloud together.

Volunteers play an important role in the success of Reach Out and Read, and are needed to read aloud to young patients in waiting areas at the medical center, demonstrate reading techniques that parents can use at home, help the child select a book to take home, organize the Open Door book library, help restock book inventory at medical centers, and deliver books to medical centers and arrange and categorize by age level on book carts.

For additional information contact: Wendy Armstrong, Senior Manager of Volunteer Services at [warmstrong@odfmc.org](mailto:warmstrong@odfmc.org) or 914-502-1468. Let Cari know if you'd like to get two or three RPC folks together to share the fun and service!



Rye Presbyterian Church Summer Session





# SUMMER SERVICE OPPORTUNITY

## CARVER CENTER MARKET

The Carver Market has consistently served the Port Chester community throughout the early days of the pandemic till today. Their self-choice market has a robust selection of fresh produce, protein, and shelf-stable food items each week.

They currently need volunteers (16+ over: and bilingual in Spanish a plus) during the following timeslots to help re-stock and reorganize shelves, unpack deliveries, and help set up for Market days. Many of these tasks might require the ability to lift boxes.

### **VOLUNTEER HOURS**

#### **MONDAY**

9:00 a.m. – 12:00 p.m.

#### **TUESDAY**

11:00 a.m. – 2:00 p.m.

#### **WEDNESDAY**

9:00 a.m. – 12:00 p.m.

#### **THURSDAY**

9:00 a.m. – 5:00 p.m.

#### **FRIDAY**

9:00 a.m. – 12:00 p.m.



400 Westchester Avenue, Port Chester, NY 10573

Go to [carvercenter.org/volunteer/](https://carvercenter.org/volunteer/) via the QR Code to fill out a volunteer application for one of the above time-slots, and to see what market items are currently most needed, should you like to make a donation. Let Cari know if you'd like to get two or three RPC folks together to share the fun and service!

Rye Presbyterian Church Summer Session



# STEPHEN MINISTRY AT RPC



## STEPHEN MINISTRY'S CARING CONNECTIONS

### Fall 2025 Stephen Ministry Course

Caring Connections, a Stephen Ministry-based training course, has been helping RPC members become better listeners and caregivers since 2004. This offering is open to all who wish to explore and improve their skills to lead and serve with compassion. Let us deepen our faith together as we learn how to give back!

Classes are led by our clergy and RPC Stephen Leaders. Completing these twelve sessions qualifies you to serve as a Friendly Visitor. For those wishing to go further, Caring Connections is foundational for becoming a Stephen Minister, where training and continuing education continues through January 2026, followed by monthly Supervision Meetings. To register, and to reach out for more information, contact Debbie Zingg at [debbie.zingg@gmail.com](mailto:debbie.zingg@gmail.com), or reach out to Becky Ruegger or Mary Versfelt.

### Caring Connections Schedule

Saturday, September 20, 8:30 a.m. - 3:30 p.m.	Saturday, October 25, 9:00 a.m. - 11:30 a.m.
Tuesday, September 23, 7:00 p.m. - 9:30 p.m.	Tuesday, October 28, 7:00 p.m. - 9:30 p.m.
Tuesday, September 30, 7:00 p.m. - 9:30 p.m.	Tuesday, November 4, 7:00 p.m. - 9:30 p.m.
Tuesday, October 7, 7:00 p.m. - 9:30 p.m.	Tuesday, November 11, 7:00 p.m. - 9:30 p.m.
Tuesday, October 14, 7:00 p.m. - 9:30 p.m.	Tuesday, November 18, 7:00 p.m. - 9:30 p.m.
Tuesday, October 21, 6:30 p.m. - 9:30 p.m.	Saturday, November 22, 8:30 a.m. - 3:00 p.m.



Permission to reprint music in this Order of Worship and to livestream it obtained from ONE LICENSE License #A-725535.

They Did Not Build in Vain

Text: Alan Luff

Text © 1990 Hope Publishing Co., Carol Stream, IL 60188.

All rights reserved. Used by permission.

Glory to God the Creator

Music: Ronald A. Nelson

Music © 1986 The United Church of Christ. All rights reserved.

I Want to Walk as a Child of the Light (Houston)

Text and Music: Kathleen Thomerson

Text and Music © 1970, 1975 Celebration. All rights reserved. Used by permission.

God of Grace

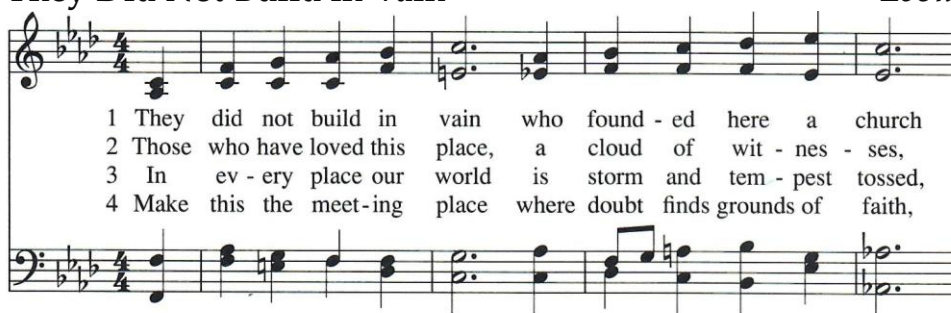
Music: Paul Manz

Music © 1974 Concordia Publishing House, assigned 1989 to MorningStar Publishers.

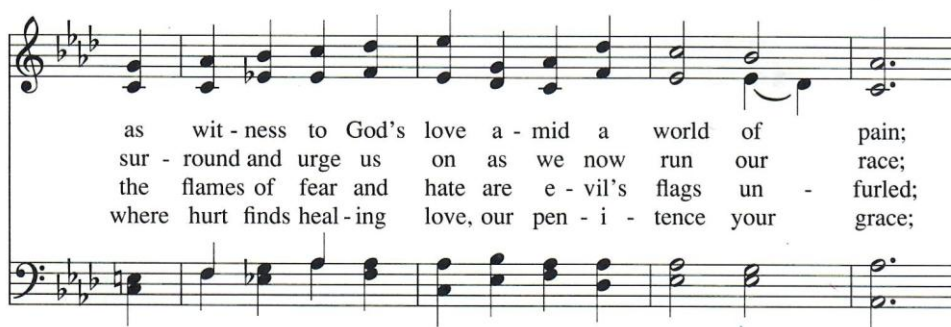
All rights reserved. Used by permission.

# They Did Not Build in Vain

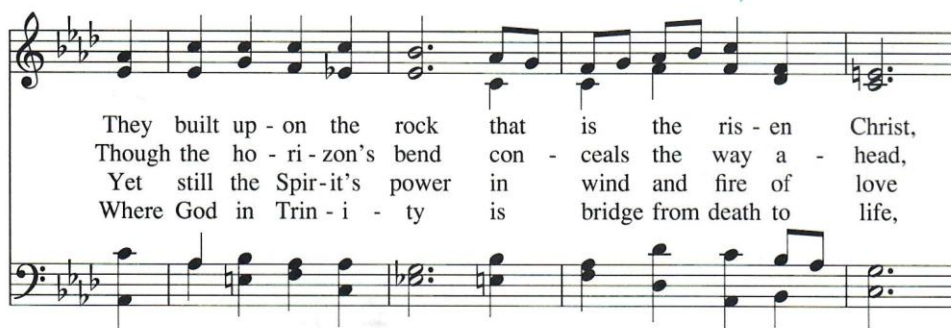
*Leoni*



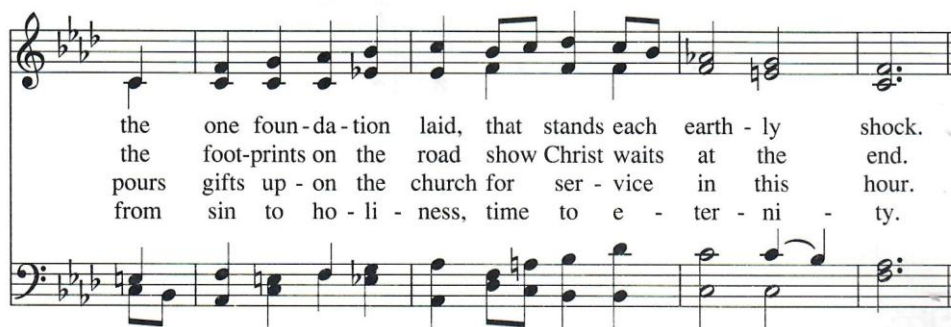
1 They did not build in vain who found - ed here a church  
 2 Those who have loved this place, a cloud of wit - nes - ses,  
 3 In ev - ery place our world is storm and tem - pest tossed,  
 4 Make this the meet - ing place where doubt finds grounds of faith,



as wit - ness to God's love a - mid a world of pain;  
 sur - round and urge us on as we now run our race;  
 the flames of fear and hate are e - vil's flags un - furled;  
 where hurt finds heal - ing love, our pen - i - tence your grace;



They built up - on the rock that is the ris - en Christ,  
 Though the ho - ri - zon's bend con - ceals the way a - head,  
 Yet still the Spir - it's power in wind and fire of love  
 Where God in Trin - i - ty is bridge from death to life,



the one foun - da - tion laid, that stands each earth - ly shock.  
 the foot - prints on the road show Christ waits at the end.  
 pours gifts up - on the church for ser - vice in this hour.  
 from sin to ho - li - ness, time to e - ter - ni - ty.

Text: Alan Luff, 1989; alt. Music: Yigdal melody, adapt. Meyer Lyon, 1770



## CHURCH STAFF

The Rev. Daniel Love, *Co-Pastor*

[dlove@ryepc.com](mailto:dlove@ryepc.com)

The Rev. Cari Pattison, *Co-Pastor*

[cpattison@ryepc.com](mailto:cpattison@ryepc.com)

Anne Halloin, *Director of Children and Youth Ministries*

[ahalloin@ryepc.com](mailto:ahalloin@ryepc.com)

Jason Charneski, *Director of Music and Organist*

[jcharneski@ryepc.com](mailto:jcharneski@ryepc.com)

Maida Robinson, *Chief Administrative Officer*

[mrobinson@ryepc.com](mailto:mrobinson@ryepc.com)

Peggy Berretta, *Administrative Assistant*

[pberretta@ryepc.com](mailto:pberretta@ryepc.com)

Max Crawley, *Administrative Assistant for Communications*

[mcrawley@ryepc.com](mailto:mcrawley@ryepc.com)

Aileen Lynch, *Office Assistant*

[alynch@ryepc.com](mailto:alynch@ryepc.com)

Juan Velasquez, *Head Sexton/Building Manager*

[jvelasquez@ryepc.com](mailto:jvelasquez@ryepc.com)

Alonso Osorio, *Sunday Sexton*



*We are a Stephen Ministry church that offers a one-on-one caring ministry to those in need.  
If you need assistance from your pastors, deacons, or a Stephen Minister, please call at (914) 967-0842.*

*If you are experiencing an acute crisis, you can call or text 988  
and you'll connect with a mental health professional through the National Suicide & Crisis Lifeline.*



## GIVING AT RPC

Online donation options are available on our giving page,

[ryepc.com/give/](https://ryepc.com/give/), and through the QR code.

Contact Maida Robinson at [mrobinson@ryepc.com](mailto:mrobinson@ryepc.com) with any questions.

*Thank you for your continued generosity and support of the church.*

