



 CONNECT

 GROW

 SERVE

 HOLY SPIRIT

 PARTNER

CONNECTING IN RELATIONSHIPS

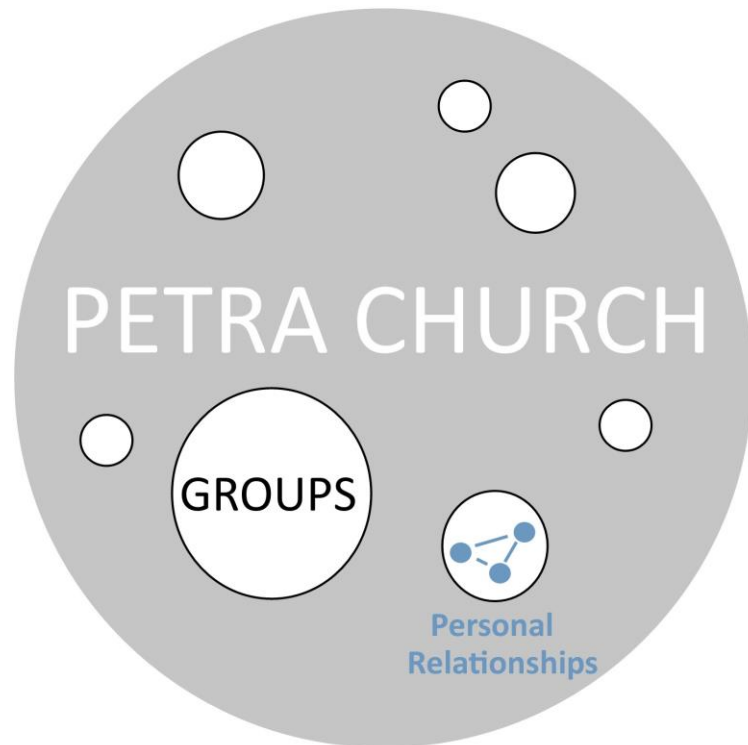
There's nothing more important in life than your relationships. The health of your relationships can dramatically affect your sense of fulfillment, quality of life, and success in faith. God's desire for you is that you'd find a home among vibrant, healthy relationships that encourage you to live like Jesus and share his love. Those kinds of relationships are life-giving.

Acts chapter 2 describes contagious Biblical community:

"Those who believed what Peter said were baptized and added to the church – about three thousand in all. They joined with the other believers and devoted themselves to the apostles' teaching and fellowship, sharing the Lord's Supper and in prayer. A deep sense of awe came over them all, and the apostles performed many miraculous signs and wonders. And all the believers met together constantly and shared everything they had. They sold their possessions and shared the proceeds with those in need. They worshiped together at the Temple each day, met in homes for the Lord's Supper, and shared their meals with great joy and generosity – all the while praising God and enjoying the goodwill of all the people. And each day the Lord added to their group those who were being saved." Acts 2:41-47

3 LEVELS OF COMMUNITY

PETRA'S HOPE. . . is that you progress from attending a church service to belonging to healthy, Biblically based, and purposeful relationships.



1. PETRA CHURCH COMMUNITY. Community on this level begins with the weekend services when our church family gathers together for prayer, worship, communion, teaching, serving one another, and celebrating the presence of God.
2. PETRA GROUPS. The second form of community takes place in our specialized ministries and ***Petra Groups***. These relational environments encourage people to interact in smaller group settings, helping healthy relationships develop over time.
3. PERSONAL RELATIONSHIPS. The third form of community develops once individuals take their relationships beyond a church-sponsored event or activity. This is where community develops in a very personal and fulfilling manner.

Taking initiative to join groups and get to know people is essential to developing community in a church this size.

FIRST STEPS AT PETRA

FREEDOM

FREEDOM

When our lives are aligned with God's truths, we begin to walk in freedom, joy, and power.

Description: In this twelve-week group, you'll learn some simple but dynamic truths that will deepen your relationship with God, replace performance with rest, break off shame, live in the Holy Spirit, choose forgiveness, speak words of life, replace judgments with blessings, and more.

Learning is personalized through daily habits, a workbook, and weekly discussions in small groups. There are also a few video teachings and a conference at the end. The truths we learn in FREEDOM are foundational to Petra Church's way of life, and we hope this group will be the first group you join here in our community.

TO SIGNUP:

- www.petra.church/freedom
- **FREEDOM GROUP START DATES:** September, February // **COST:** Workbook costs \$12

PETRA GROUPS and START DATES

Petra Groups are a primary way in which the church family builds relationships, grows toward God, and cares for each other. We have different types of groups that meet a variety of needs and interests. Short-term groups meet for 6, 8, or even 12 weeks. Our **Small Group** communities mostly meet in people's homes and are usually ongoing.

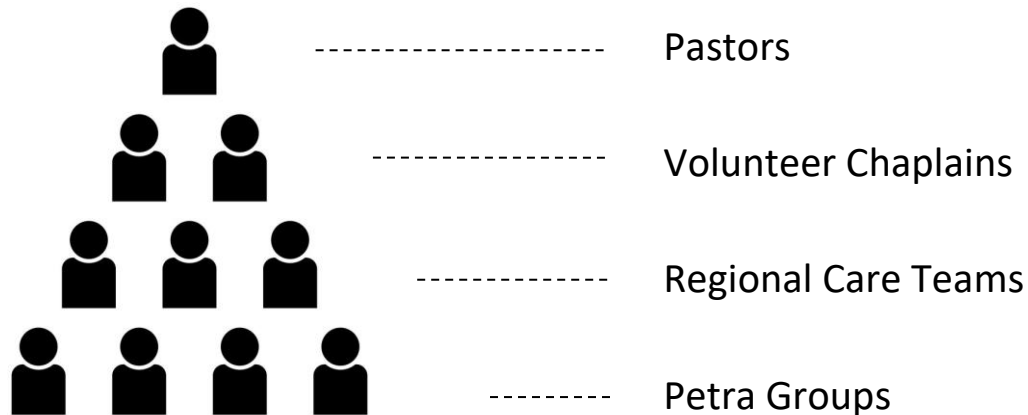
Small Groups

Small Groups are our ongoing communities of people that meet in homes throughout Lancaster. Their focus is on...

- connecting relationally
- reading and applying God's word
- praying together
- discussion and application

To learn more about the different types of groups or sign up for a group, go to petra.church/groups. **September & January** are the two major signup months to join or start a Petra Group.

Whether your need concerns marriage, pre-marriage, finance, organizing funerals or weddings, managing an emergency situation, or just relational connectedness, our Care Team would love to walk alongside you. Our care teams include:



God designed communities to help care for each other's needs. In the New Testament, pastoral care was mostly met through the personal community of friends and not professional clergy. The health of every Petra family member is important to us, and we all work together to meet the needs of those around us. Acts 4:32-37; Acts 6:1-7; 1 Timothy 5:3-16.



PETRA.CHURCH/REGIONALCARE

PETRA'S DIGITAL RESOURCES

We believe technology and social media are tools to connect believers and provide discipleship throughout the week. Church is not just a Sunday morning thing; we believe it's a tool for growth in wisdom and knowledge. However, we hope it never substitutes for real relationships and community.



WWW.PETRA.CHURCH

CHURCH APPS:



PETRA APP: Watch online content, view upcoming events, give online, register for upcoming events, follow a Bible reading plan, and more.



REALM CONNECT: Functions as our church directory. You will get a login at your next step conversation.



RIGHTNOW MEDIA: Video-based content, thousands of Bible studies, children's videos, leadership, marriage, and financing taught by Church leaders from across the U.S. is a FREE resource to you through Petra's subscription. www.petra.church/rightnowmedia



PETRA BLOG: Devotions, essays, and written content from Petra people equipping you for faith and life. www.petra.church/blog



PETRA NEWS: Get up-to-date information about events and community life on a weekly basis through EMAIL subscription. www.petra.church. Click on "Petra News" under *Media*.

FOLLOW US ON SOCIALS:

@PetraChurchNewHolland

