

THE MESSENGER

Monthly Newsletter



Advent at RLC - "The Lord is My Shepherd"

The season of Advent begins on Sunday, Nov 30th, as we gather in worship and see the David Hetland mural, "The Lord is My Shepherd," across the front of the sanctuary. Throughout the season of Advent we remember God's eternal promise of hope given to us through our Good Shepherd, born in a lowly manger, Jesus Christ. Each Sunday in Advent prepares us for the celebration of the birth of Christ Jesus, who lives in our hearts and lives through faith.

The RLC Kids Christmas program will be presented in worship on Sunday, December 7, at the 10:30am service.

Christmas Festival Concert – Saturday, December 13 at 7:00pm

CHRISTMAS AT RLC – "For unto us a child is born"

Our Christmas worship celebrations begin on Christmas Eve, December 24, with two Christmas Family Blessing services at 3:00pm and 4:30pm. The celebration continues at 9:00pm with a Christmas Candlelight Communion service.

Join us on Christmas morning for worship at 10:00am.

On the First Sunday of Christmas, December 28, we have One Worship at 10:00am.

Important Dates & Events in Dec./Jan.

November 30th to Dec. 21st
RLC Sharing Tree

December 7th
Kids Christmas Program

December 13th
Christmas Festival Concert

December 28th
One Worship

January 21st
Dresser Build

For a full calendar of church events, please check out the church website at this QR code.



Sign Up for Our Weekly eBlast

Scan the QR Code Below



Holiday Festivities



Kids Christmas Program + Rehearsal

The RLC Kids Christmas Program will be December 7th during the 10:30am worship service. Join us as our RLC Kids tell the Christmas story through word and song! RLC Kids families, please note: we will have a special rehearsal the Saturday before (December 6) at 9am. Please make every effort to attend, as this is the only time we get to run through the program in the Worship Center, start to finish, with everyone present!

RLC Sharing Tree - Nov. 30 to Dec. 21

We're excited to host the RLC Sharing Trees to support our community partners this holiday season! There will be two trees: one in the commons with a Gift Card station, and one in the upper lobby (no gift card station). Tags on the trees list the items needed—simply take a tag and return the unwrapped gift with the tag attached.

The Sharing Tree benefits Keystone Community Services (personal hygiene items), Bridging (household items), Interfaith Action (toys and winter clothing), Every Meal (donations for school-age children), and Central Park Elementary/Roseville Area Schools (gift cards in \$25 increments for gas, groceries, and household items).

Please return all gifts or gift cards by Sunday, December 21. Questions? Contact Janelle Olson at janelleaolson@gmail.com



Christmas Garden

Christmas is both a time for celebrating the birth of Jesus and remembering or honoring our loved ones.

Through a contribution to the Christmas Poinsettia Garden at Roseville Lutheran Church, you can help to purchase beautiful poinsettias that help to enhance the Sanctuary and the sense of joy as we celebrate the birth of Jesus.

Please consider a monetary donation in memory or in honor of someone special or in celebration of a special occasion. Contribution forms will be available at the Welcome Desk and the church office. Information from completed forms received by Monday, December 8, 2025 will be printed in the Christmas Concert, Christmas Eve and Christmas Day bulletins. Any funds exceeding the cost of the poinsettias will go to the Chancel Fund to enhance the Sanctuary with flowers throughout the year.



First Sunday Breakfast

Bring your family and friends and join us for a delicious Sunday breakfast and great conversation and fellowship in the Social Hall after each worship service. Free will offering welcome.

Community Updates

CONGREGATIONAL COUNCIL UPDATE

Congregational Council Update

Council members have committed to a successful stewardship campaign by expressing our gratitude through online pledges. Council members are also encouraging committee members to consider pledging in the same way.

The Personnel Committee, along with Pastor Kent, has completed a process to recruit a new church administrator. Council has approved the recommended candidate, and we are excited to announce that Nancy Johnson will be joining us. We are grateful for Carol Garbisch's dedicated efforts over the past year; she will continue to serve as a valuable resource during the transition.

Council and staff are also beginning a process to assess church security, starting with a discussion with the Ramsey County Sheriff's Office.

Finally, we extend our sincere thanks to the many volunteers and staff who made Reformation Sunday a wonderful and meaningful event.

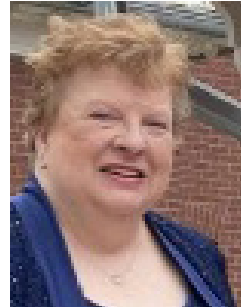
Church Security

In an effort to reduce unmonitored & unlocked exterior doors, RLC's exterior doors will generally be **UNLOCKED 15 MINUTES EITHER SIDE OF THE START OF A MEETING**. Depending on the meeting room, lower level meeting rooms will have **DOOR 1** (South Entrance) unlocked, and for upper level meeting rooms, **DOOR 2** (Lobby Door) will be unlocked, 15 minutes either side of the start of the meeting. Questions/Comments: KJ Bach, Bob Zisner or Pastor Kent.



Introducing Our New Church Business Administrator

Hello RLC, my name is Nancy Johnson, and I am excited and blessed to be joining the Roseville Lutheran ministry team as the Church Business Administrator. I am a proud mother of two adult children. My son is a Corrections Office in Wisconsin and my daughter is a special education teacher here in the Twin Cities. I have six wonderful grandchildren who I love to spend time with. My work experience includes Administrative Director for a local non-profit organization, working with both the Minneapolis and Saint Paul Area Synods and working as a church business administrator for another Lutheran Church. I look forward to sharing this experience and my gifts as your new Church Business Administrator.



STEWARDSHIP

Managing God's Gifts To Us

Stewardship Thank You - Our Duty and Delight

Thank you to everyone who has submitted their pledges to support Christ's ministry at Roseville Lutheran Church. If you haven't received or have misplaced your pledge materials, please contact the church office at 651-487-7752. You can still bring your pledge card to church or mail it to the office. Every gift makes a difference, and we are grateful for your faithful support.

Giving as faithful stewards of God's gifts is both our duty and delight. Check out our Weekly Stewardship Talks on the RLC YouTube page by scanning the QR Code:



Community Updates

RLC Quilters Group: A Year of Warmth and Community Outreach

The RLC Quilters Group is pleased to share an update on our outreach over the past year. Our members have lovingly crafted quilts to bring comfort and warmth to vulnerable populations in our community and beyond.

Our ministry has reached a variety of needs in the community: quilts for babies and toddlers have been donated to the Women's Care Center, offering comfort to new mothers and their infants; lap robes and larger quilts have been provided to local nursing homes, bringing a touch of home to seniors and those in care; and twin and larger quilts have been shared through Bridging and the Immigration team, welcoming new families with a tangible symbol of community support.



By year's end, we anticipate surpassing 250 quilts donated, a true testament to our volunteers' dedication.

Anyone interested in joining this meaningful ministry is welcome! We gather on Wednesdays

Pastoral Care Visits

In need of a visit from one of our pastors? We would love to come visit you!

Please contact the church office if you or someone you love is desiring a pastoral visit. Call 651-487-7752. One of our pastors will call you to arrange for a visit.

Scrapbooking Group

Hey RLC! Did you know that we have a group that gathers once a month to scrapbook, craft, sew, create, or any project you can bring? Or just to hang out with some great people. We meet on the second Friday of the month from 7 to midnight. All are welcome! If you would like to be on our email reminder list or be notified if we have a change in schedule, please contact Gena at genashawnone@comcast.net. Hope to see you there and feel free to bring a friend.

ONAM Lecture Event

Our Neighbors and Me (ONAM), Roseville Lutheran's racial justice committee, would like to invite you to attend a lecture by Rev. Mariann Edgar Budde on the topic, 'How Much Can a Human Heart Hold? To Persevere in Hope in Fearful Times' at Westminster Town Hall Forum on Thursday December 4th at noon. Doors open at 11 am, and this is expected to be a full house, so it is recommended to arrive early. Carpooling will be available in the South lot of RLC at 10:30 am. A reception will follow the program and be an opportunity to connect with others who attend from RLC.

Rev. Budde is an Episcopal bishop. She preached at the 2025 US inaugural prayer service, calling for unity and mercy. ONAM sponsored a book discussion on 'How We Learn to be Brave' by Rev Budde this past summer. Her talk will be inspiring and hope filled encouragement. For questions contact Kathy Miller 651-494-8639.

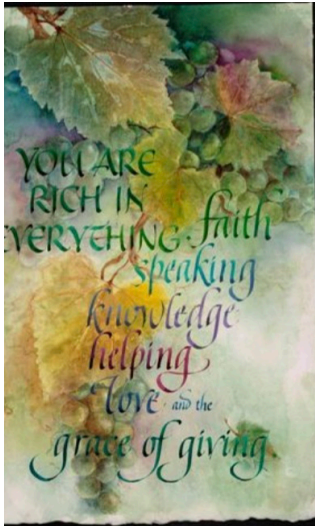
For more information, scan the QR code below.



Stay in the Loop!
Scan the QR code to
view the full RLC event
calendar and never
miss an upcoming
event!

LOVE GOD • LOVE YOUR NEIGHBOR

Community Updates



Shine God's Light this Christmas Through the RLC Endowment Fund

Shine God's Light this Christmas Through the RLC Endowment Fund. This Christmas season, you can celebrate God's love and honor the saints in your life by supporting the RLC Endowment Fund. Every gift—whether a current contribution or part of your estate plans—strengthens our mission and ensures RLC continues sharing God's love for generations to come.

Join us during our All Saints Love Lights presentation at the Christmas Concert and help the Endowment Fund grow as we shine God's light together.

You can donate to the fund by scanning the QR code.



Upcoming Adult Education Forums

RLC Adult Education • 10:00 am Sundays

December 7th:

Noted art historian, Kristin Anderson, will present "The Christmas Story In Art". She will use art to tell the wonderful story of the birth of Christ with images of angels, shepherds, kings, and the Holy Family beginning with the Annunciation and ending with the Flight into Egypt.

December 14th:

Professor James Boyce will present the Christmas Story as told in the book of Matthew.

December 21st:

One of John Helgen's many talents is his thorough knowledge of hymnal history. He will present "Hymns New and Old for Advent Christmas".

December 28th:

Christmas break. No Adult Ed session.

January Preview:

January 4th, Adult Ed Future Topic Session. (Bring your ideas. Coffee and goodies provided.) January 11th, Member Arlene Skoor attended the last ELCA convention where she took part in the election of ELCA's new bishop, Yehiel Curry. She will discuss that process along with how other decisions are made. January 18th, Lourdes Flores-Hanson, Multilingual Program Administrator with Roseville Area Schools, will be speaking on Immigrant experiences in Roseville.. January 25th, no Adult Ed because of the annual Dresser Build Event.

Children, Youth & Family Updates

Holiday Schedule for CYF Programming

There will be no RLC Kids programming on December 28-Please enjoy ONE worship together as a family at 10:00am.

There will be no Confirmation on December 24 or 31, due to the holidays. Please come to worship on Christmas Eve and the NYE Jazz Concert.

Dresser Build

Dresser build returns this January! Confirmation will build dressers for Bridging on January 21, 2026. Then RLC Kids and the whole congregation will join in the fun and service to continue the effort to build dressers for clients at Bridging on Sunday, January 25, 2026.



Our goal is to build 50 dressers this year and we need everyone to pitch in! Come to the Activity Center before or after worship to join in the fun-stay as long as you can! Bridging serves folks coming out of homelessness and RLC has been partnering with them for many years. The Dresser Build is a fun way to serve right here at church.



2026 Camp Wapo Dates

Registration for Camp Wapo opens on January 15! Seeds Weekend is a taste of camp for students in 1st-3rd grade. Their weekend will be July 24-26, 2026. Our 4th-9th grade students will go together July 26-31st. More registration information will be available in the next newsletter, but for now, hold those dates and get ready to register on January 15th, as our spots are only held for one month!



Confirmation Lock-In

The Confirmation Lock-in will be Feb 6-7, 2026. Confirmation Families will receive more details and a link to registration soon, but for now, save the date and tell your friends! This event is for 7-9th grade students. Friends are welcome, but everyone must register in advance. This will be a night full of food, fun, friends, and fellowship! Previous lock-ins have included karaoke, bowling, foosball, basketball, friendship bracelets, 9 square, board games, and many other fun activities. This is a night you won't want to miss!

Preschool Taskforce Update

Hello from the RLC Preschool Taskforce!

We've been working hard to consolidate all pre-school, childcare, and children's ministry items and take inventory of what we have at RLC. We're identifying which items to keep for our nursery, family room, RLC Kids ministry, and VBS, and letting go of anything outdated, broken, or unusable.

This spring, we're planning a sale and donation event to share usable items with others. Our goal is to show that RLC values families and children both inside and outside our doors. We want to keep our ministry vibrant and fresh, supporting all aspects of children's ministry so every little one we cherish is visible and supported at RLC.

We'll pause for the holidays and resume in the new year to complete our sorting and planning—then work with the congregation and staff to support the future vision of our Children's Ministry.

Blessings,
Lori, Lorene, Val, Heidi, Julie, & Gena

Organ Project Update

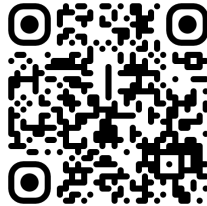


It is exciting to see the transformation in the pipe loft! The Swell Division is enclosed on the east wall, the center Choir Division is framed, and more curved oak casework is up. Once the infrastructure is complete, organ builder J.F. Nordlie will start setting pipes.

It was hoped the organ would be playable for the Christmas concert, however due to delays of the hand-crafted pipes from the Netherlands, completion will likely be March or April 2026. The Organ

Project Team continues to plan inaugural events, the organ dedication and a recital series.

Many thanks to over 50 RLC volunteers who help keep the project running smoothly by providing lunches or assisting the Nordlie team!



Stay updated on all Organ Project news—scan the QR code for all of the latest updates!

Financial Update (As of 10/31/25)

Fiscal Year July 2025 to June 2026
Operating Budget (July - October)

	Actual	Budget	Budget vs. Actual	
Offerings	318,558	313,050	5,508	Offerings more than budgeted
Other Receipts	28,922	31,733	(2,811)	Other Receipts less than budgeted
Total Income	347,480	344,783	2,697	Total Income more than budgeted
<hr/>				
Expenses	333,936	396,872	(62,936)	Expenses less than budgeted
Totals	13,544	(52,089)	65,633	Actual more than budgeted!

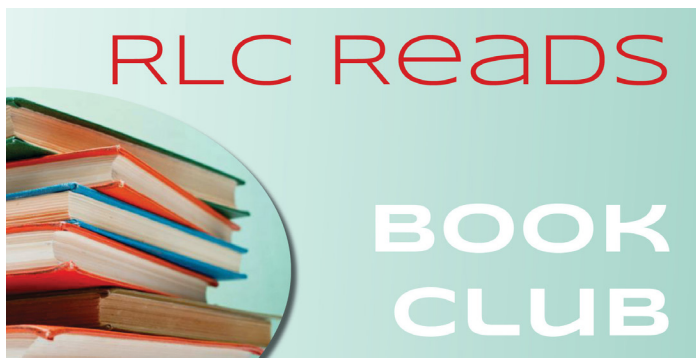
First half of the fiscal year typically runs a deficit.

December and January reports we start seeing a positive number in the budget and hopefully actuals will continue to run a surplus.

We are running a surplus in Actuals due to giving doing better and staffing expenses still running lower than budgeted due to open positions.



NON-PROFIT ORG
U.S. POSTAGE
PAID
TWIN CITIES MN
PERMIT NO. 2168



Worship at Roseville Lutheran

Sundays at 9am & 10:30 am

Upcoming RLC Reads Books

RLC Reads meets at 7:00 PM on the 2nd Thursday of the month in the "coffee shop" area near the church office just inside the north doors. Use the upper parking lot and come join us. Even if you haven't finished the book, we'd still love to see you there. Everyone is welcome! Contact Bob Bergstrom (rcbergstrom@comcast.net) with any questions. Here are the upcoming books:

December, 2025

No RLC Reads Meeting

January 8th, 2026:

The Emperor of Gladness by Ocean Vuong (2025, 416 pgs)

February 12th, 2026:

The Heaven and Earth Grocery Store by James McBride (2023, 385 pgs)

March 12th, 2026:

My Friends by Frederik Backman (2025, 436 pgs)