



August 4, 2020

## Message from David Amaral, Scientific Director of Autism BrainNet

We sincerely hope that you and your loved ones have escaped the ravages of COVID-19. It is at times like these that we appreciate that friends and family are the most important things in life. Yet this crisis is often hard to deal with — particularly if your family includes an individual with a developmental condition. The COVID-19 pandemic is also affecting autism research worldwide; you can read about the impact on and resiliency of autism scientists in an article that was recently published in the journal *Autism Research*. [Read more.](#)

### SCIENCE

#### The biological basis of social challenges in ASD



Autism spectrum disorder (ASD) is associated with changes in hundreds of genes, but it is unclear how these changes lead to the behavioral challenges experienced by people with ASD. This study highlighted a small set of genes in a part of the brain called the 'amygdala,' which controls emotions.

[Learn more about this study.](#)

#### Effects of gene regulation on biological pathways in the autism brain



Many changes in the brains of people who have autism may happen in specific types of brain cells. These changes can affect genes that are important for immune responses in the brain and communication between brain cells. Findings from this new study suggest that specific gene changes in autism may have an effect in certain biological pathways.

[Read more.](#)



We recently spoke with Kelly Gleason, Tissue Coordinator for Autism BrainNet at the University of Texas Southwestern in Dallas, TX, to learn more about her research, her role with Autism BrainNet and the importance of advancing autism research.

[Read the interview.](#)

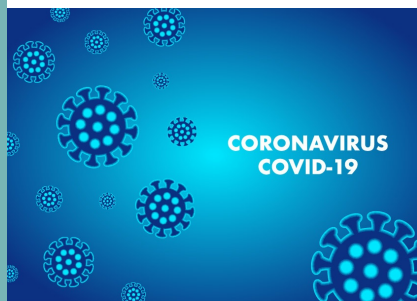
## NEW COLLABORATION



**FAMILIES. RESEARCH.  
CLINICS. COMMUNITY.**  
WITH YOU FOR THE JOURNEY.

Autism BrainNet and the Angelman Syndrome Foundation (ASF) have established a partnership to help foster research to gain a deeper understanding of Angelman syndrome and autism. Welcome ASF! Visit [angelman.org](http://angelman.org) to learn more about ASF.

## COVID-19 RESOURCES



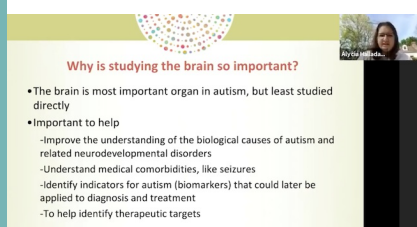
COVID-19 has affected autism research worldwide and how it will be carried out in the future. This collaborative article from researchers around the world helps shed light on the collective and various challenges researchers face during the COVID-19 pandemic. [Learn more.](#)

## COMMUNITY EVENTS

Thanks to all the individuals, families, researchers and organizations that joined us virtually to support and learn more about Autism BrainNet, and help advance autism research.



Matthew Anderson, director of Autism BrainNet's node at Beth Israel Deaconess Medical Center in Boston, shared his latest research findings during a live chat hosted by the Autism Research Coalition. To view the presentation, [click here.](#)



Alycia Halladay, from the Autism Science Foundation, a community partner of Autism BrainNet, joined families, researchers and healthcare providers at the [Dup15q Alliance Facebook Live family event](#) to share information on the importance of studying the brain to understand autism and Dup15q syndrome.

## HOTLINE

## Contact us, we are here to help.



If you have questions about Autism BrainNet and the donation process, email us at:

[info@autismbrainnet.org](mailto:info@autismbrainnet.org)

If you have questions about making a donation, call our 24 hour hotline:

**1-877-333-0999**

STAY CONNECTED



<https://autismbrainnet.org> | <https://takesbrains.org>