

Corbicula Clam Results 2003

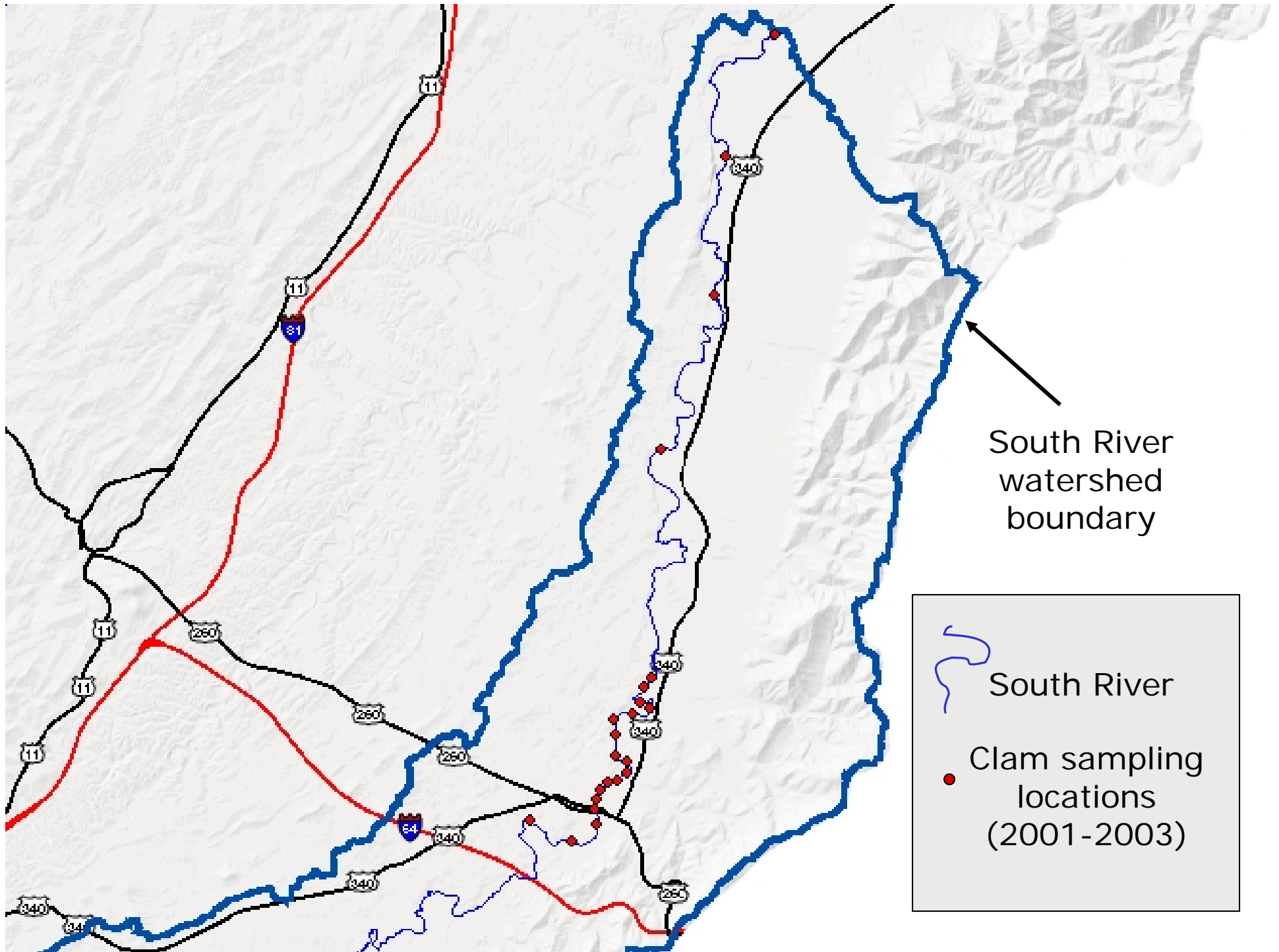
Thomas R. Benzing
James Madison University
February 10, 2004

Ecology of *Corbicula fluminea*

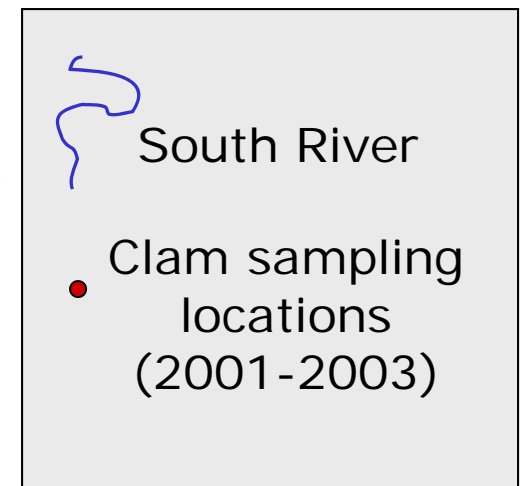
- non-native freshwater clam
- first reported in Virginia in 1972
- average life span: 1-3 years
- abundant in South River
- filter rate: 8 – 800 mL per hour
- typical adult size: 0.2 – 0.5 grams



Asiatic clam, *C. fluminea*



South River watershed boundary

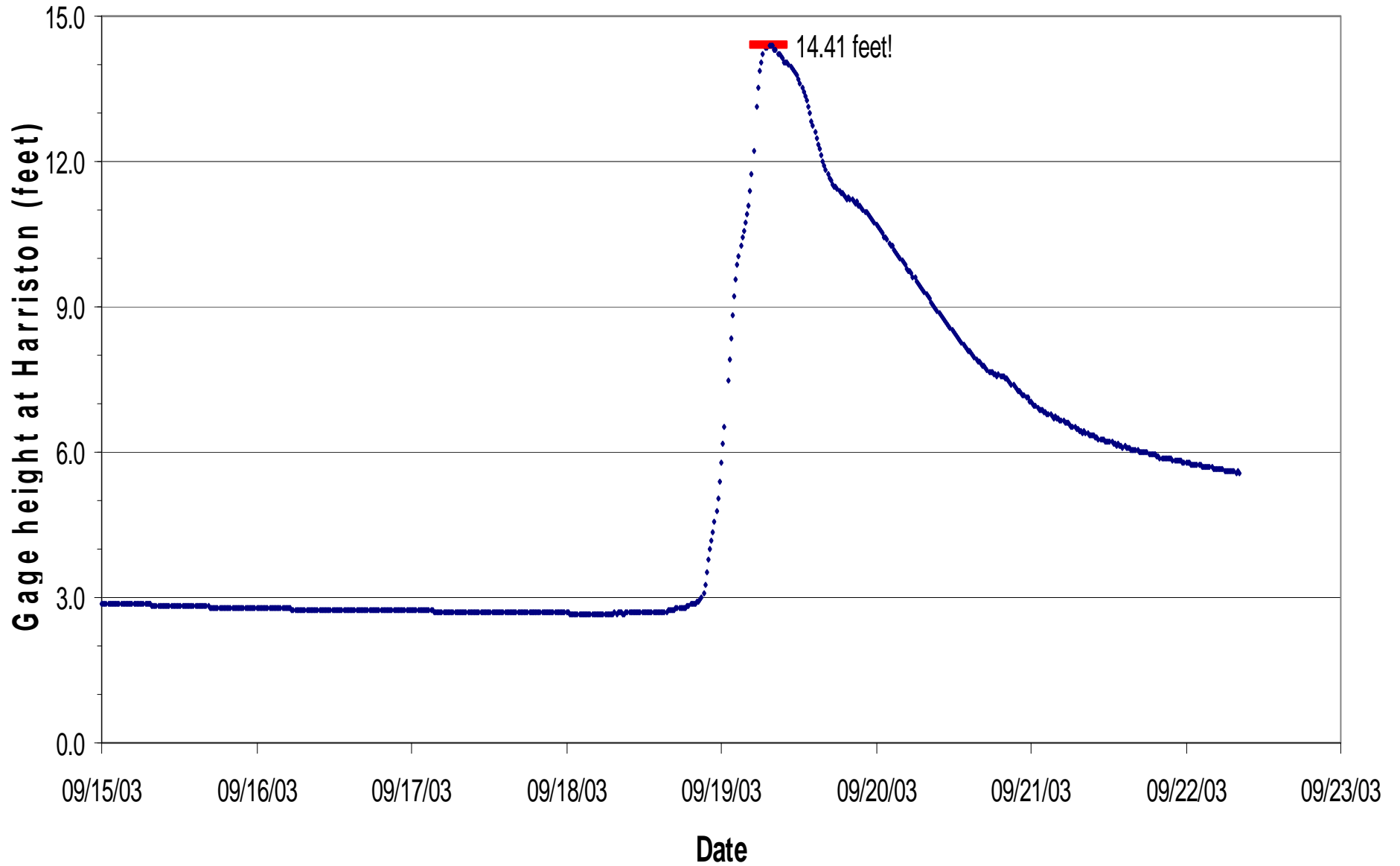


Sampling Notes: November 15, 2003

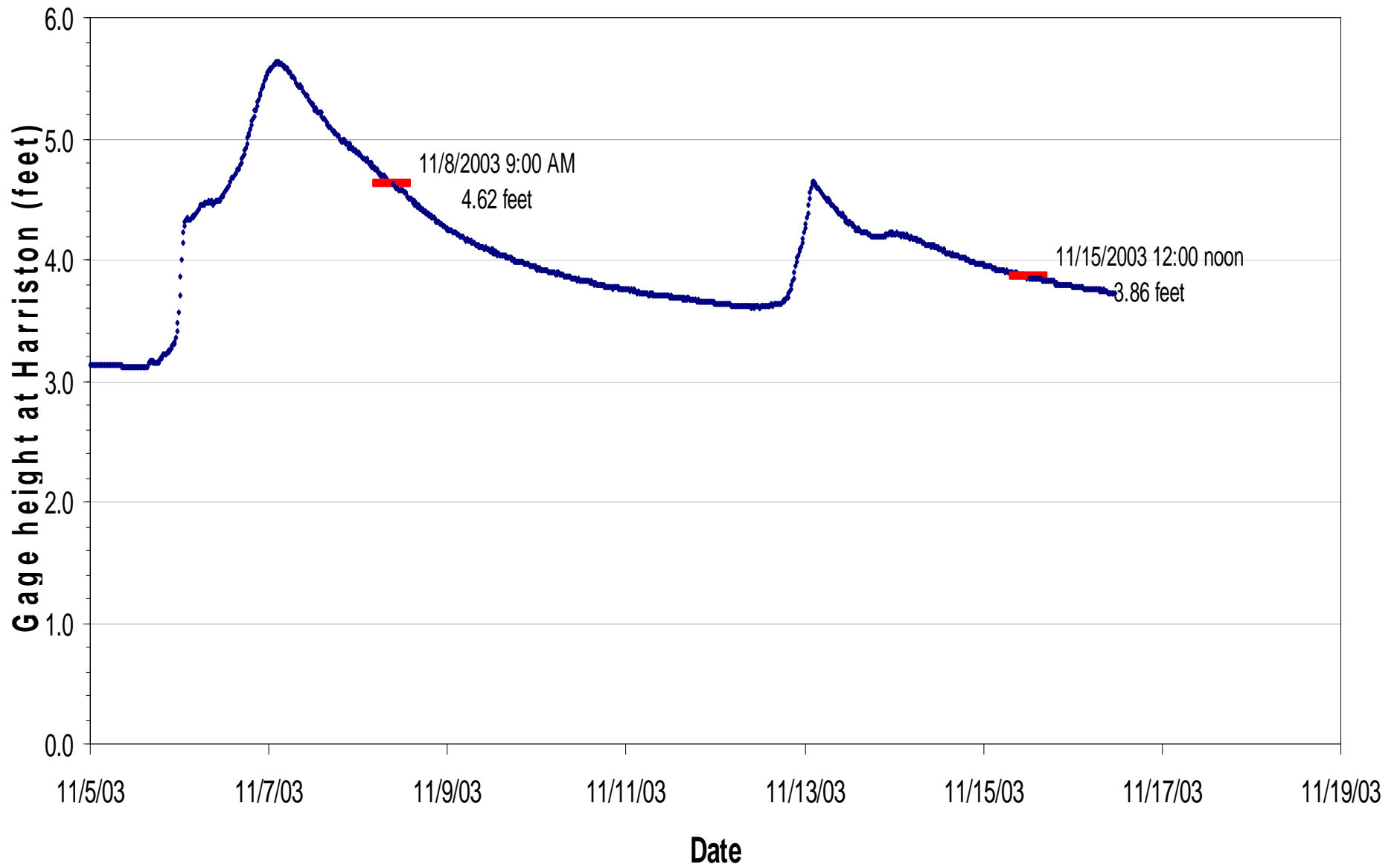
- Streamflow was higher than normal
 - Evidence of recent scouring of river channel
 - Clams were not as easy to find as last year
 - Purged in deionized water for over 48 hours
 - Shucked and frozen on November 18
 - Shipped to analytical lab on November 19
-



South River Stage during Hurricane Isabel (September 2003)



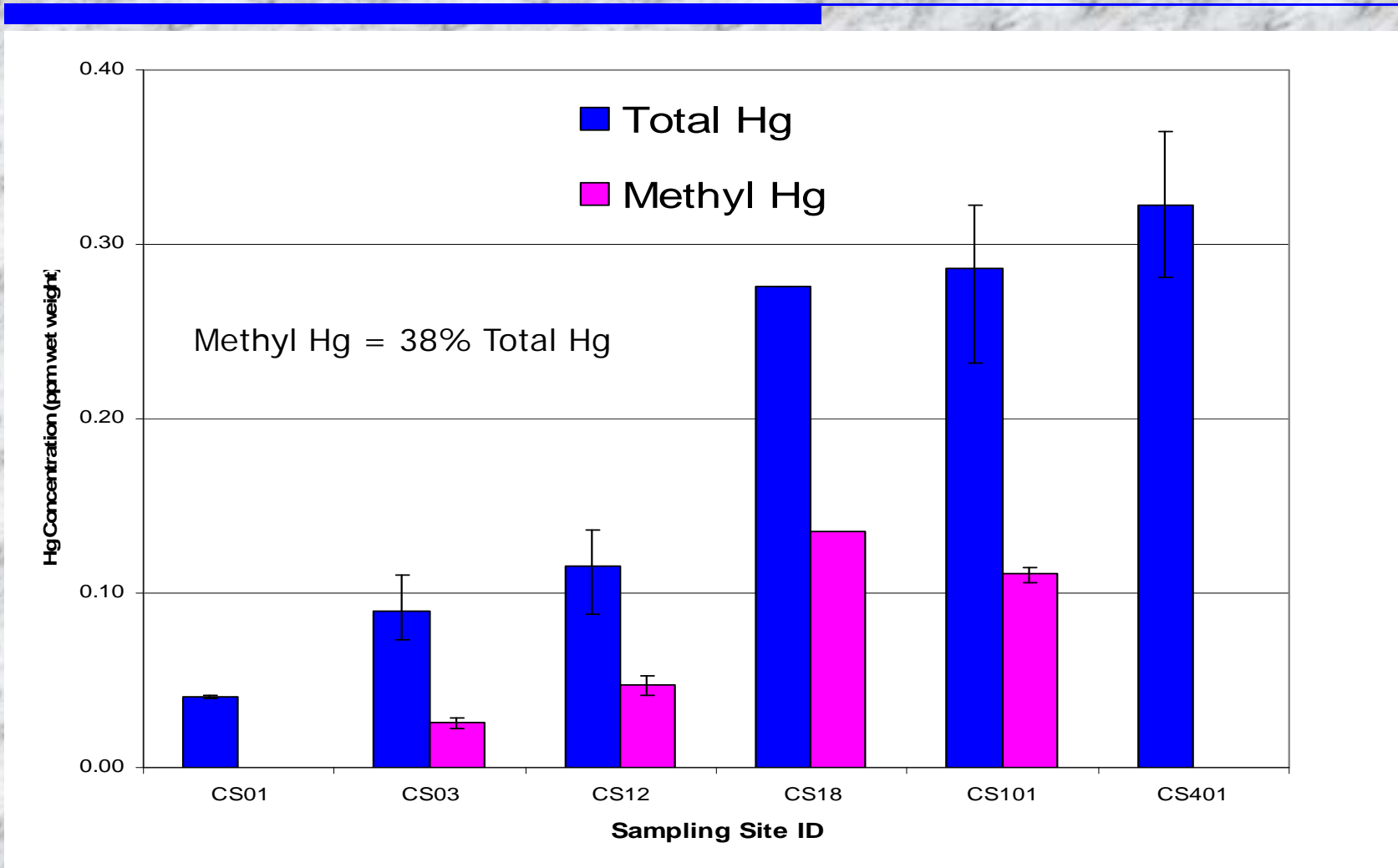
South River Stage during November 2003



Clam Tissue Results, 2003

Site ID	Description of Location	Replicates	Hg (ppm)	MeHg (ppm)
CS01	Ridgeview Park (control)	2	0.040	
CS03	Constitution Park	3	0.090	0.026
CS08	North Park	1	0.158	
CS12	downstream of Hopeman Parkway bridge	3	0.115	0.048
CS18	Dooms	1	0.276	0.135
CS101	Augusta Forestry Center	3	0.286	0.111
CS401	Port Republic @ Town Park	3	0.322	

Clam Tissue Results, 2003



Comparison of Clam Data, 2001-2003

