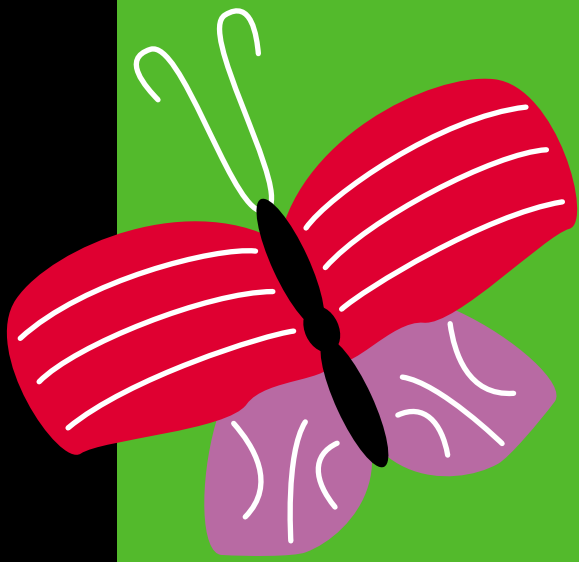




PEGASUS®

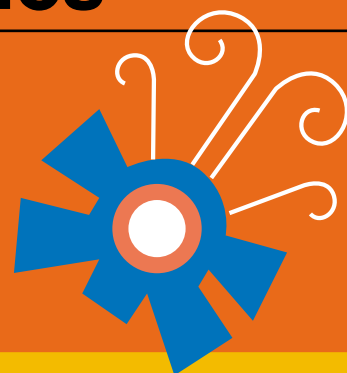
W1500

2 or 3-needle, flatbed,
interlock stitch machines



New concepts, New global standards, New interlock stitch machines

The W1500 Series offers safety and excellent cost-effectiveness, as well as unprecedented high-quality of finished products. Pegasus is confident that this series will become the standard by which interlock stitch machines will be judged in the future.



Point 1 Pursuing beautifully finished stitches

Thanks to Pegasus' unique needle thread take-up mechanism, the amount of thread supplied, which influences the visual characteristics and textures of finished stitches, will become more uniform. In addition, as a leading manufacturer of chainstitch machines, the various features Pegasus has developed with its comprehensive achieve unmatched, high quality, well-balanced and neatly-finished stitches.



Point 2 Operator-friendly design

The driving parts, such as the thread take-up, are covered by eye guards. Projected areas have been removed as much as possible from the surface of the machine. Therefore, the W1500 Series provides operators with safe working conditions. In addition, these machines are stress-free, with minimal noise and vibration.



Point 3

All the subclasses are equipped with a needle and thread cooler (HR device) that protects the fabrics and threads against heat.

Needle heat rises in high speed machines due to friction when the needle penetrates the fabric, causing thread breakage and skip stitching. The W1500 Series is equipped with a needle and thread cooler (HR device) that reduces needle heat generation. In addition, this device allows the thread to go through the machine smoothly, so uniform stitches are formed.





W1500 Specifications in common



- No. of needles : 2-3 needles
- No. of threads : 3-5 threads
- Needle space : 2-needle machine (3.2mm 4.0mm 4.8mm 5.6mm 6.4mm) *
3-needle machine (5.6mm 6.4mm)
- Stitch length : 1.2mm-4.4mm
- Differential feed ratio: 1: 0.5-1: 1.3
- Presser foot lift : 6.3mm
- Machine speed : Max 6,000 rpm**
- Application : Plain seaming, Attaching tape, Attaching elastic lace

* 5.6mm and 6.4mm gauges are achieved by removing the middle from the machine with gauges 3-needle machines.

**Depends on sewing conditions.

Point 4 Achieving high quality

A new shape for the needle bar and the use of special parts effectively prevents oil leakage. This feature enhances the quality of sewn products.

Point 5 Economical features

All of the subclasses are equipped with thread guides and stands for three threads. One machine can be used as a versatile machine by using accessory parts. These features allow for excellent cost effectiveness.

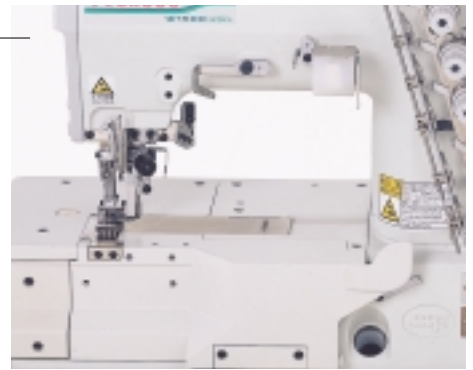




Other Features

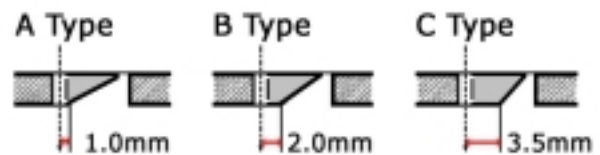
■ Handling the fabric is easy, increasing production.

The space to the right of the needle drop hole is large, so it is easy for the operator to handle the fabric.



■ The W1500 Series can sew light to heavy weight items.

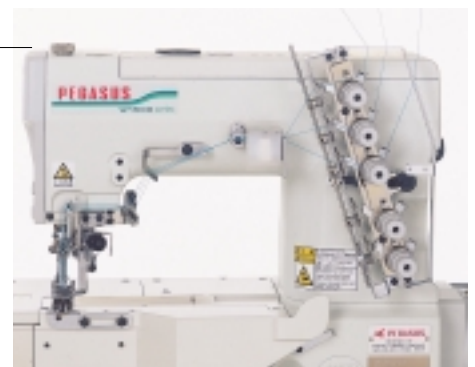
Three kinds of needle plates are available, according to the diversity of the sewn products.



Cross section of the needle plate

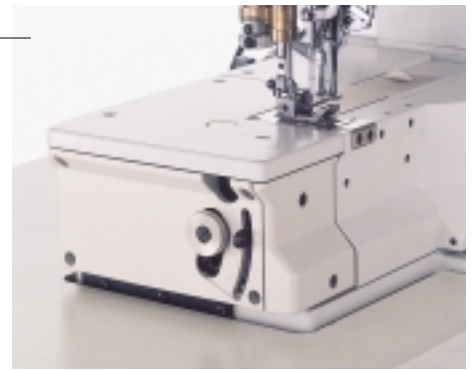
■ Threading the machine is easy.

Needle thread: You can thread the machine almost horizontally from the right to the left.
Looper thread: The looper thread guide bracket pops out toward the operator with a touch of the push button, so threading the looper thread take-up is also easy.



■ Effortless, but accurate, adjustments of the differential feed ratio

The adjustment knob is positioned outside of the side cover, so there is no need to open the side cover when adjustments are made. Fine adjustments of the differential feed ratio can be made effortlessly and accurately, according to the characteristics of each sewn product.



■ Oil sight gauge window for checking the amount of oil, Oil flow sight gauge

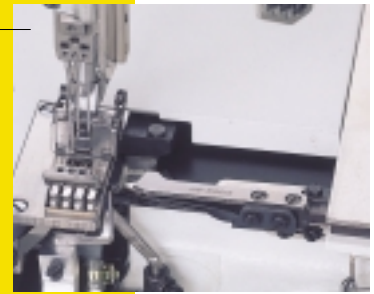
You can check the amount of oil and the flow of oil through the respective windows from the outside of the machine. Thus, it is easy to know when to replace the oil and how the oil is circulating. Thanks to this feature, you can always run the machine safely.



W1500 Devices

■ Thread trimmer (UT)

To cut the threads you simply press the treadle with heel. No scissors are needed. This feature allows you to concentrate entirely on sewing, dramatically increasing production efficiency. If the UT includes the capability of lifting the presser foot.



Underbed thread trimmer

Cuts the needle and looper threads. If the UT has the thread wiper that picks up the needle threads after they are trimmed, you can go smoothly to the next operation.

Top cover thread trimmer

Cut the top cover thread as soon as the needle and looper threads are trimmed. Eliminates the need for a bothersome operation of cutting the top cover thread, increasing production when the operation needs the top cover thread.



■ Presser foot lift (PL)

Reduces operator fatigue. Pressing the treadle actuate the air cylinder to raise the presser foot. As for PL device, only the pneumatic type is set up.



■ Tape/Thread chain cutter (TK)

Cuts the tape and/or thread chain at the start and end of sewing. Switch-operated knife brings down in order to cut the tape and/or thread chain. There are two types of driving methods available, pneumatic and electric.



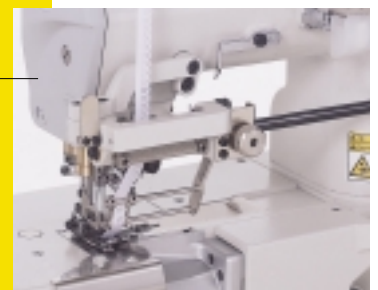
■ Fabric edge trimmer (FT)

Trims the fabric edge during sewing, providing neatly finished products.



■ Lace/Elastic feeder (MD)

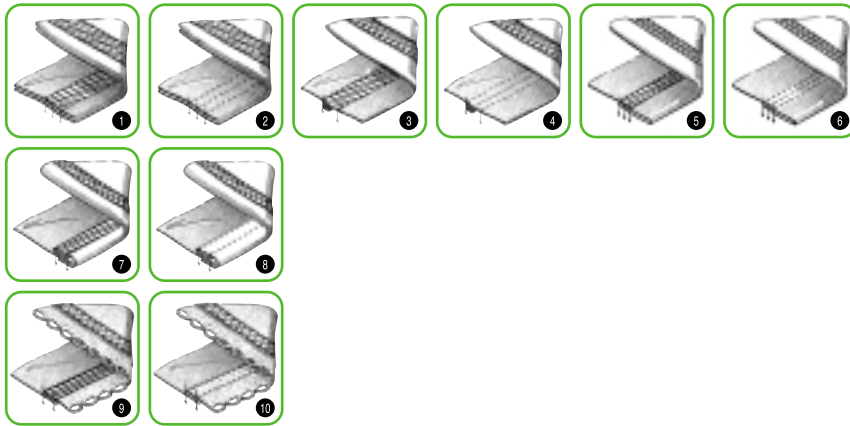
Feeds lace or elastic according to the feeding amount of the fabric, so the lace or elastic is fed constantly if sewing speed is changed. Thanks to this feature, beautifully finished sewn products are obtained.





W1500 Series Subclasses

seam	Type of machine	Model	No. of needles	No. of threads	Machine speed(rpm)	Remarks
① ② ③	Plain seaming light to medium weight fabrics					
④ ⑤ ⑥	Available for a wide range of applications using various guides and/or attachments	W1562-01J	2 · 3	3~5	6,000	The guides for covering, hemming
⑦ ⑧	Binding tape on light to medium weight fabrics					
⑦ ⑧	Binding tape on neck openings of underwear or T-shirts	W1562-02G	2 · 3	3~5	6,000	Tape guide assembly
⑨ ⑩	Attaching elastic lace					
⑨ ⑩	Attaching elastic lace to women's underwear	W1562-05B	2 · 3	3~5	5,500	Fabric edge trimmer, Lace/elastic feeder Reel stand assembly



PEGASUS®

PEGASUS SEWING MACHINE MFG.CO.,LTD.
 5-7-2, Sagisu, Fukushima-ku, Osaka 553-0002, Japan
 Phone: 81-6-6458-4739 Telefax: 81-6-6454-8785
<http://www.pegasus.co.jp>

※The specification and/or appearances of the equipment described in this catalog is subject to change because of modification without previous notice.

