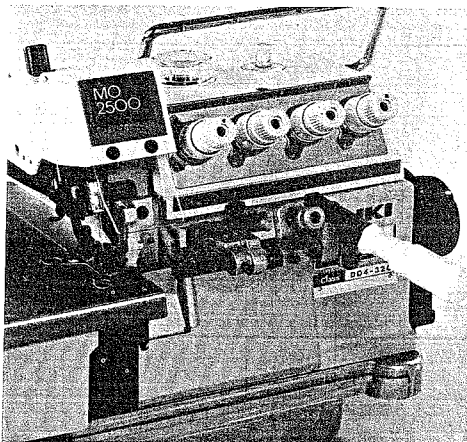


## Other attachments

Name **Swing-type Gathering Device (lever-operated)**

Code No. **S097**



### Applicable machines

MO-2△16E-BD4-320  
MO-2△16E-DD4-320  
MO-2△16E-DD6-320  
MO-2△16E-DH6-320  
MO-2△16E-FF6-320  
MO-2△16E-RH6-320  
MO-2△43E-DBD6-320

### Class of work

Negligee, pajama, blouse,  
one-piece dress, etc.

### Application

Suited for intermittent gathering and  
runstitching for joining fabrics.

### Materials

Light-weight materials such as geor-  
gette and broadcloth.  
Knit material.

### Conditions

Cannot be used for fully-sunken type  
table.  
Cannot be used with MO-2300 series.

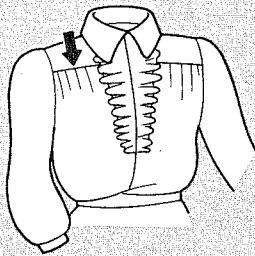
### Exchanging parts

Throat plate  
Presser foot  
Main feed dog  
Differential feed dog

### Remarks

DL-6  
Differential feed ration selector

#### ● Seam specifications

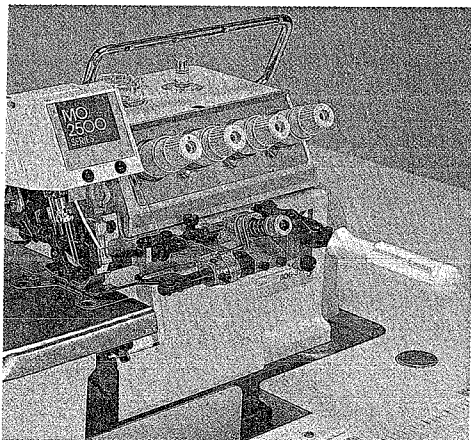


Part No.

MAS-09700-0A0

Name **Swing-type Gathering Device (lever-operated)**

Code No. **S098**



### Applicable machines

MO-2△04E-0D6-320  
MO-2△04E-0F6-320  
MO-2△04E-0H6-320  
MO-2△14E-BD6-320  
MO-2△12E-DF6-320

### Class of work

Negligee, pajama, blouse,  
one-piece dress, etc.

### Application

Suited for intermittent gathering and  
runstitching for joining fabrics.

### Materials

Light-weight materials such as geor-  
gette and broadcloth.  
Knit material.

### Conditions

Cannot be used for fully-sunken type  
table.  
Cannot be used with MO-2300 series.

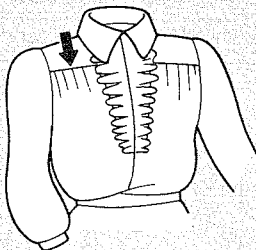
### Exchanging parts

Throat plate  
Presser foot  
Main feed dog  
Differential feed dog

### Remarks

DL-6  
Differential feed ration selector

#### ● Seam specifications

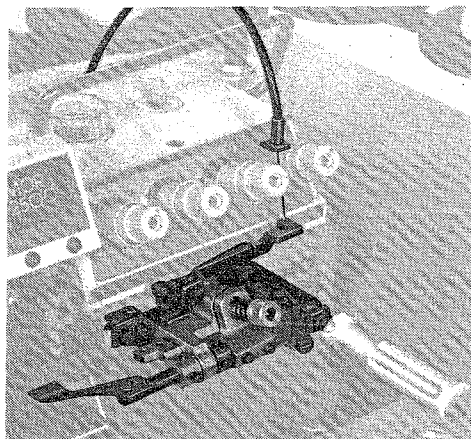


Part No.

MAS-09800-0A0

# Other attachments

<b>Name</b>	<b>Swing-type Upper Cloth Gathering Device (Knee-operated)</b>	<b>Code No.</b>	<b>S112</b>
-------------	--	-----------------	-------------



### Applicable machines

MOR-2514E-BD4, BD6-327/S112  
 MOR-2516E-DD4, FF6, RH6-320/S112  
 MOR-2543E-DBD6-327/S112

### Remarks

This gathering device is operated by knee pad.  
 DL-7  
 Differential feed ratio selector

### Class of work

Ladies' wear, blouse, etc.

### Application

Gather yokes, cuffs, etc.

### Materials

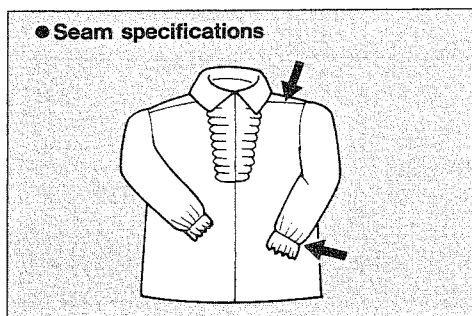
Knit, georgette, T/C broadcloth, etc.

### Conditions

Types of machines with which this can be used are limited.

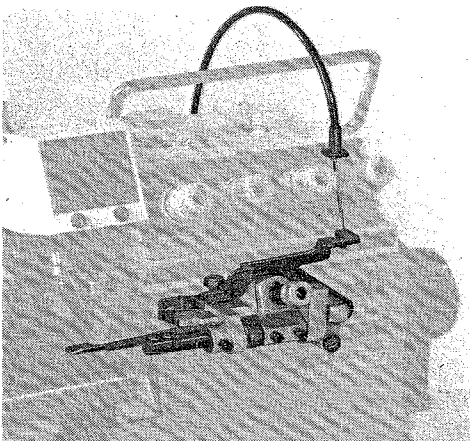
### Features

Top feed dog  
 Presser foot & top feed dog for MOR-2516E-DD4-320/S112



<b>Part No.</b>
MAS-11200-0A0-A

<b>Name</b>	<b>Swing type Lower Cloth gathering device (pedal-operated)</b>	<b>Code No.</b>	<b>S114, S115</b>
-------------	---	-----------------	-------------------



### Applicable machines

MOR-2500 series  
 MOR-2514E-BD6-3B7/S114/M077  
 MOR-2516E-FF6-3B0/S115/M077

### Conditions

Gather lower cloth. When used together with piping holder use M077 gimp piping holder.

### Class of work

Pajama, baby wear, etc.

### Remarks

It is also possible to use only for lower cloth gathering without using piping.  
 DL-6  
 Differential feed ratio selector

### Application

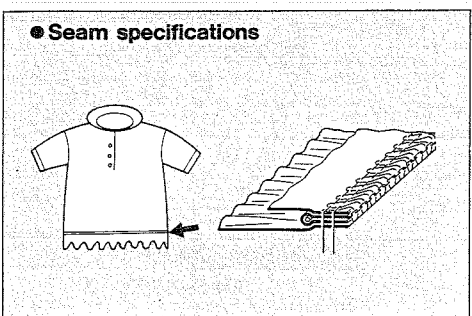
Used for bottom piping & gathering

### Materials

Knit material and knitwork

### Features

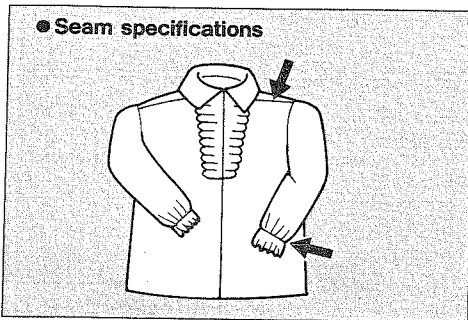
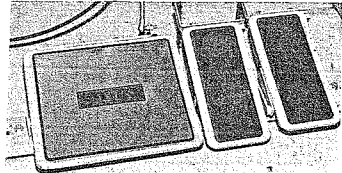
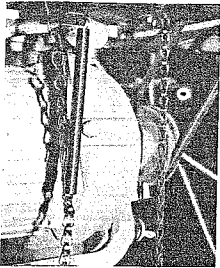
Part name	MOR-2514-BD6-3B7	MOR-2516-FF6-3B0
Throat plate	R4305H0DE0A	R4612H0FD00
Presser foot	11935053	11935152
Top feed dog	11938602	11938701
Main feed dog	11883402	11885902
Differential feed dog	B1657814B0L	11884103
Needle guard	—	B4120816F0CA
Needle guard setscrew	—	SS7060610SP



<b>Part No.</b>
MAS-11400-0A0-A
MAS-11500-0A0-A

# Other attachments

<b>Name</b>	<b>Pedal-operated top differential ratio change device (for Z stand)</b>	<b>Code No.</b>	<b>S118</b>
-------------	--	-----------------	-------------



### Applicable machines

MOR-2514E-BD4, BD6-327/S112  
 MOR-2516E-DD4, FF6, RH6-320/S112  
 MOR-2543E-DBD6-327/S112

### Class of work

Ladies' wear, blouses, etc.

### Application

Ideally suited for gathering yokes, cuffs, etc.

### Materials

Knit, georgette, T/C broadcloth, etc.

### Conditions

Applicable models are limited.

### Features

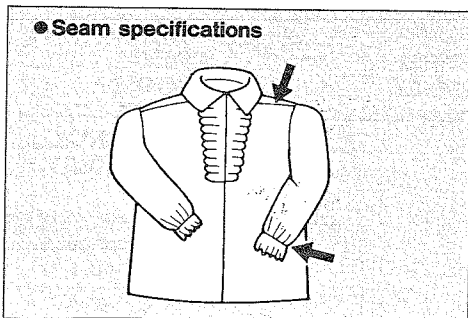
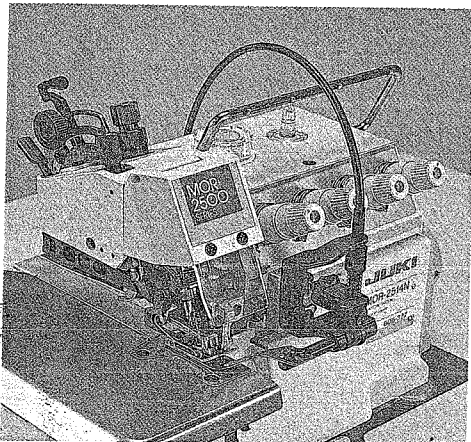
Same as S112.

### Remarks

Cannot be used together with DL-7.

<b>Part No.</b>
MAS-11800-OA0-A

<b>Name</b>	<b>Swing-type Upper Cloth Gathering Device (Compact type Knee-operated)</b>	<b>Code No.</b>	<b>S125</b>
-------------	---	-----------------	-------------



### Applicable machines

MOR-2514E-BD4, BD6-327/S125  
 MOR-2516E-DD4, FF6, RH6-320/S125  
 MOR-2543E-DBD6-327/S125

### Class of work

ladies' wear, blouse, etc.

### Application

Gather yokes, cuffs, etc.

### Materials

Knit, georgette, T/C broadcloth, etc.

### Conditions

Types of machines with which this can be used are limited.

### Features

Top feed dog  
 Presser foot & top feed dog for MOR-2516E-DD4-320/S112

### Remarks

This gathering device is operated by knee pad.  
 DL-7  
 Differential feed ratio selector

<b>Part No.</b>
MAS-125000A0