

MODEL

907 / 914

Heat Seal Machines



PUT IT ON!®

THIS MACHINE IS DESIGNED TO BE OPERATED BY ONE OPERATOR ONLY

Congratulations!

Your selection of the Insta Graphic heat seal machine is a sound business decision. Insta Graphic equipment is the result of the highest quality engineering and time-tested design. Your new machine combined with Insta's reputation of innovation in the heat sealing field, insures the continuing capability of delivering the best decorated garments possible.

This manual describes installation, operation, and maintenance procedures for your new 900 series machine, as well as easy to use instructions for on the spot maintenance.

Your 900 series machine will have a long trouble free life. Read this manual. Keep it with your machine, it's your key to proper operation and lasting service.

Installation



DOMESTIC - 900 SERIES

Use a separate 15 amp AC circuit. Only industrial extension cords with proper wire size should be used: size 18/3 wire for distances up to 25 feet, and size 16/3 for distances up to 50 feet.



INTERNATIONAL - 900 SERIES

Use a designated 16 amp AC circuit. Only industrial extension cords with proper wire size (2.5 sq. mm) shall be used.

Limited Machine Warranty

Insta Graphic Systems (IGS) warrants this heat seal machine, when operated under normal conditions, to be free from manufacturing defects in material and workmanship for a period of one year on parts (lifetime on the heating element) and 90 days on labor.

This warranty will be effective only when IGS authorizes the original purchaser to return the product to the factory in Cerritos, California,

freight prepaid, and only when the product upon examination has proven to be defective.

This warranty does not apply to any machine that has been subjected to misuse, negligence or accident.

IGS shall not be liable for the injury, loss or damage, direct or consequential, arising out of the use or the inability to use the product.

No claim of any kind shall be greater in amount than the sale price of the product or part to which claim is made.

This is the sole warranty given by the company, it is in lieu of any other warranties, expressed or implied, in law or in fact, including the warranties of merchantability and fitness for a particular use, and is accepted as such by the purchaser in taking delivery of this product.

Operation

1. It is recommended that you review the "How to Apply Instructions" (in our Product Information Sheet) before beginning heat sealing operations.
2. Push ON/OFF switch to ON position.
3. Set desired temperature.
4. Allow the machine to warm up until the selected temperature is reached.
5. Set the desired pressure by adjusting the air pressure regulator.
6. Select the desired timing cycle.
7. Place the substrate on lower platen, smoothing out all wrinkles.
8. Position transfer or lettering on substrate.
9. Swing the upper platen into position directly over the lower platen.

NOTE



For operator safety the machine is designed not to operate unless the upper platen is in the extreme left hand or right hand position.

10. Depress both start buttons, one on each side of the machine, simultaneously. At this point the machine operation is fully automatic. The upper platen moves downward, seals the transfer to the substrate and then releases automatically at the end of the selected timing cycle.

FOR USE BY QUALIFIED SERVICE PERSONNEL ONLY



CAUTION

Do not place hands between the platens after activating.

11. Swing away the upper platen to the opposite side and remove substrate.



NOTE

Another substrate may be prepared on the unused platen during the sealing operation of the used platen.

12. The DISENGAGE button may be pushed at anytime to deactivate the machine.

Solid State Controller



This controller has four (4) control features:

1. Temperature - Temperature may be set from 125-450°F (52-232°C)
2. Time - Time may be set from 1 second to 10 minutes
3. Counter - Cycle counter counts the number of applications from 1 to 9999 (see Additional Notes - Counter)
4. Presets - Five (5) presets that can be programmed by the user. Each preset will retain a temperature and time setting, i.e. Program #1 could be set for 325°F and 10 seconds while Program #2 could be set for 375°F and 15 seconds. Once the five presets have been programmed, the user need only press the PGM button several times until the desired program is selected. The lit LED above the PGM button indicates the selected program. *Note: there is also a sixth setting that is indicated by no lit LED's.*

Controller Operation

1. Select the desired program by pressing the PGM button until the LED above the PGM button indicates the desired setting.
2. If a setting other than the presets is desired, press the PGM button until none of the LED's above the PGM button are lit.
3. If the temperature is not being displayed, press the MODE button until temperature is displayed.
4. Push and hold SET button and simultaneously push UP (↑) or DOWN (↓) arrow buttons to the desired temperature setting.
5. Press the MODE button until time is displayed.
6. Push and hold SET button and simultaneously push UP (↑) or DOWN (↓) arrow buttons to the desired timer setting.
7. **Note: When the machine is operating with none of the LED's lit, i.e. no presets, the time and temperature WILL BE SAVED even if the power is turned off. The presets will also be saved when the power is turned off.**
8. Allow the machine to warm up until the selected temperature is reached.
9. Set the desired pressure by adjusting the air pressure regulator.
10. Place the substrate on lower platen.
11. Position transfer or lettering on substrate.
12. Swing the upper arm into position directly over the lower platen.



NOTE

For operator safety the machine is designed not to operate unless the upper arm is directly over one of the lower platens.

13. Depress both start buttons simultaneously. At this point the machine operation is fully automatic. The upper platen moves downward, seals the transfer to the substrate, and then releases automatically at the end of the selected timing cycle.
14. Swing away upper platen to the alternate lower platen and remove the substrate.
15. The DISENGAGE switch (located in the center of the instrument panel) may be pushed at any time to deactivate the machine.

FOR USE BY QUALIFIED SERVICE PERSONNEL ONLY

Setting the Presets

To program the presets:

1. Push and hold both the MODE and PGM buttons for 3-5 seconds until one of the programs LED's starts to blink. This is the programming mode.
2. A lit LED above the PGM button indicates which preset is active.
3. Select a program (1,2,3,4,or 5) by pressing the PGM button
4. If the temperature is not being displayed, press the MODE button until temperature is displayed.

Note: If a Fahrenheit/Celsius change is desired see Additional Notes - Temperature.

5. Push and hold SET button and simultaneously push UP (↑) or DOWN (↓) arrow buttons to the desired temperature setting.
6. Press the MODE button until time is displayed.
7. Push and hold SET button and simultaneously push UP (↑) or DOWN (↓) arrow buttons to the desired timer setting.
8. Repeat steps 4-8 until all five (5) presets have the desired preset (temperature/time cycle).
9. Push and hold both the MODE and PGM buttons for 3-5 seconds to exit the programming mode.
10. When in the normal mode, none of the five program LED's will be blinking.

Note: *When the machine is operating in its normal mode, the user cannot change the time and temperature for any of the five presets.*

ADDITIONAL NOTES:

Temperature



NOTE

Fahrenheit/Centigrade (Celsius) Conversion

The temperature controller can be programmed to display either °F or °C.

To change:

Push and hold MODE and PGM buttons for 3 seconds to enter the programming mode.

Push the Mode button until the temperature is displayed. Then with the SET button depressed, push and hold the MODE button for 3 seconds . To exit the programming mode, push and hold MODE and PGM buttons for 3 seconds.

Timer

- The controller has a count down timer, which automatically disengages (opens) the machine at the completion of the application.
- Timer display is minutes:seconds. Range is 00:00 to 10:00, Colons (:) flash while timer is running.
- The DISENGAGE button (center of instrument panel) may be pressed anytime during a cycle, and the cycle will stop immediately, and the timer will reset.

Counter

The controller has a built in cycle counter.

- Press MODE button until the counter is displayed.
- Counter display range is 0000 to 9999.
- To reset the cycle counter, display the counter reading, then push and hold both UP (↑) and DOWN (↓) arrow buttons for 3 seconds until the counter resets to zero (0000) on the display.

FOR USE BY QUALIFIED SERVICE PERSONNEL ONLY

Preventive Maintenance Suggestions

The Insta Graphic heat seal machines are relatively maintenance free. For long trouble-free life, the following preventive maintenance instructions should be followed:

1. Do not heat seal items such as buttons, pins, snaps, or zippers which tend to cut the silicone rubber pad or scratch the Teflon heat platen.
2. Periodically clean the Teflon-coated heat platen with a non-abrasive piece of cloth. Stubborn stains may be cleaned, when platen is cool, with mineral spirits.
3. When the heat platen is hot and not in use, keep in open position (away from the silicone rubber pads).
4. To prevent soiling of garment, periodic wiping of the entire exterior machine, including platens, with a clean rag is recommended. If necessary, use mineral spirits for cleaning a cold machine. Since mineral spirits are flammable, use precautions and keep away from sparks, flame, or hot heat platen.
5. Occasionally apply a few drops of heavy machine oil to the moving parts.



NOTE

Wipe off any excess oil or grease.

General Maintenance

It is recommended that you have the following items available:

- A. Regular screw driver
- B. Phillips head screw driver
- C. Small adjustable wrench
- D. Needle nose pliers with insulated handle
- E. Set of Allen wrenches (supplied with the machine)

With the above items you should be able to accomplish most repairs.



WARNING

Power cord replacement should be supplied from the manufacturer only (because it requires a specially prepared cord).

Micro Switch Adjustment

1. Disconnect power supply, remove top panel of instrument housing.
2. Swing upper platen into working position until stop is reached.
3. The micro switch must be adjusted to JUST CLOSE, as upper platen swings to this position.
4. To change micro switch setting, loosen the screw on slotted end of micro switch. Move in desired direction to bring switch to JUST CLOSED condition (listen for an audible click from micro switch) and re tighten screw.

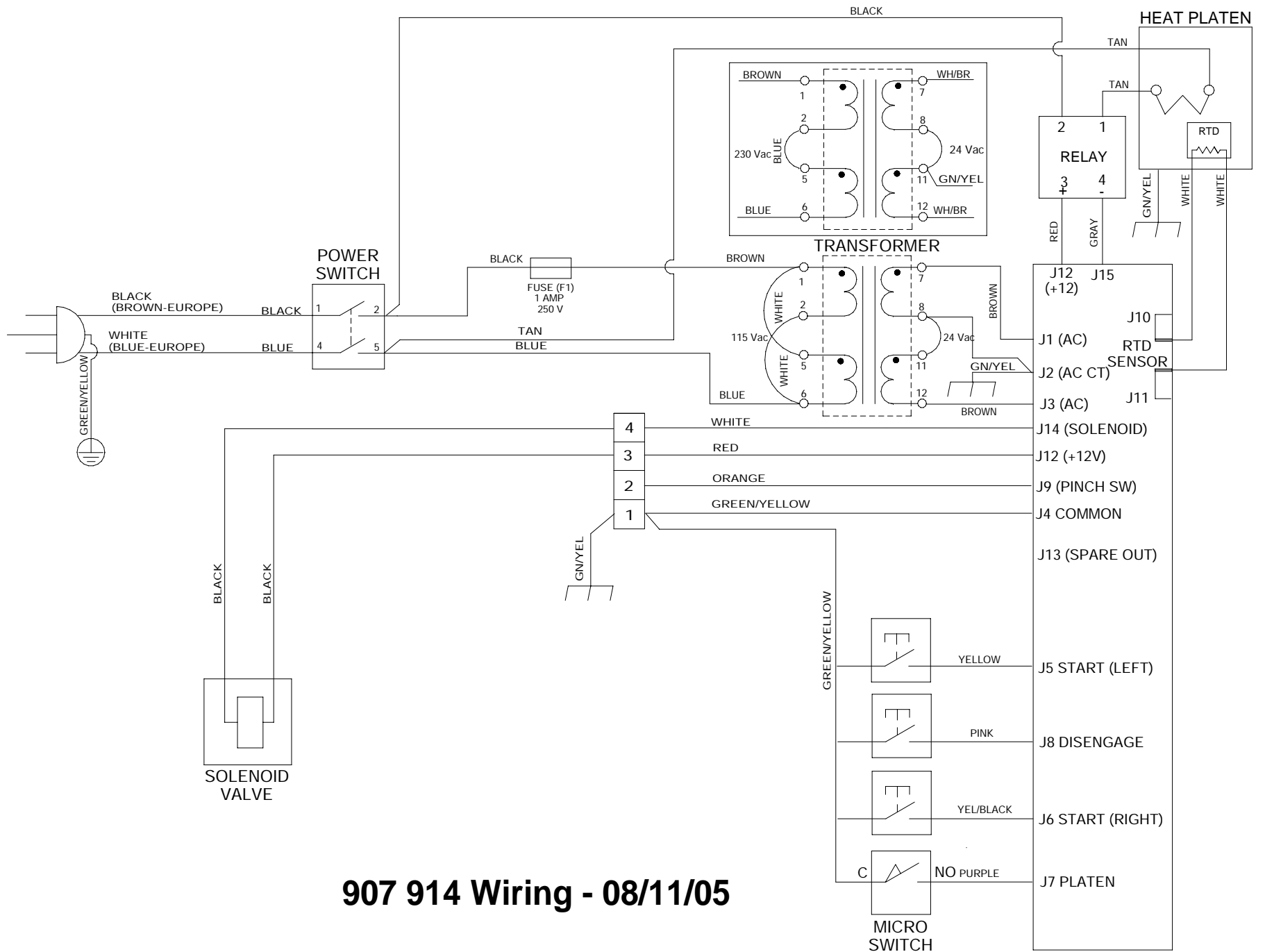
Specifications

Voltage	120 Volts AC	50/60 Hertz
Model 907	8.4 Amps	1000 Watts
Model 914	3.4 Amps	400 Watts

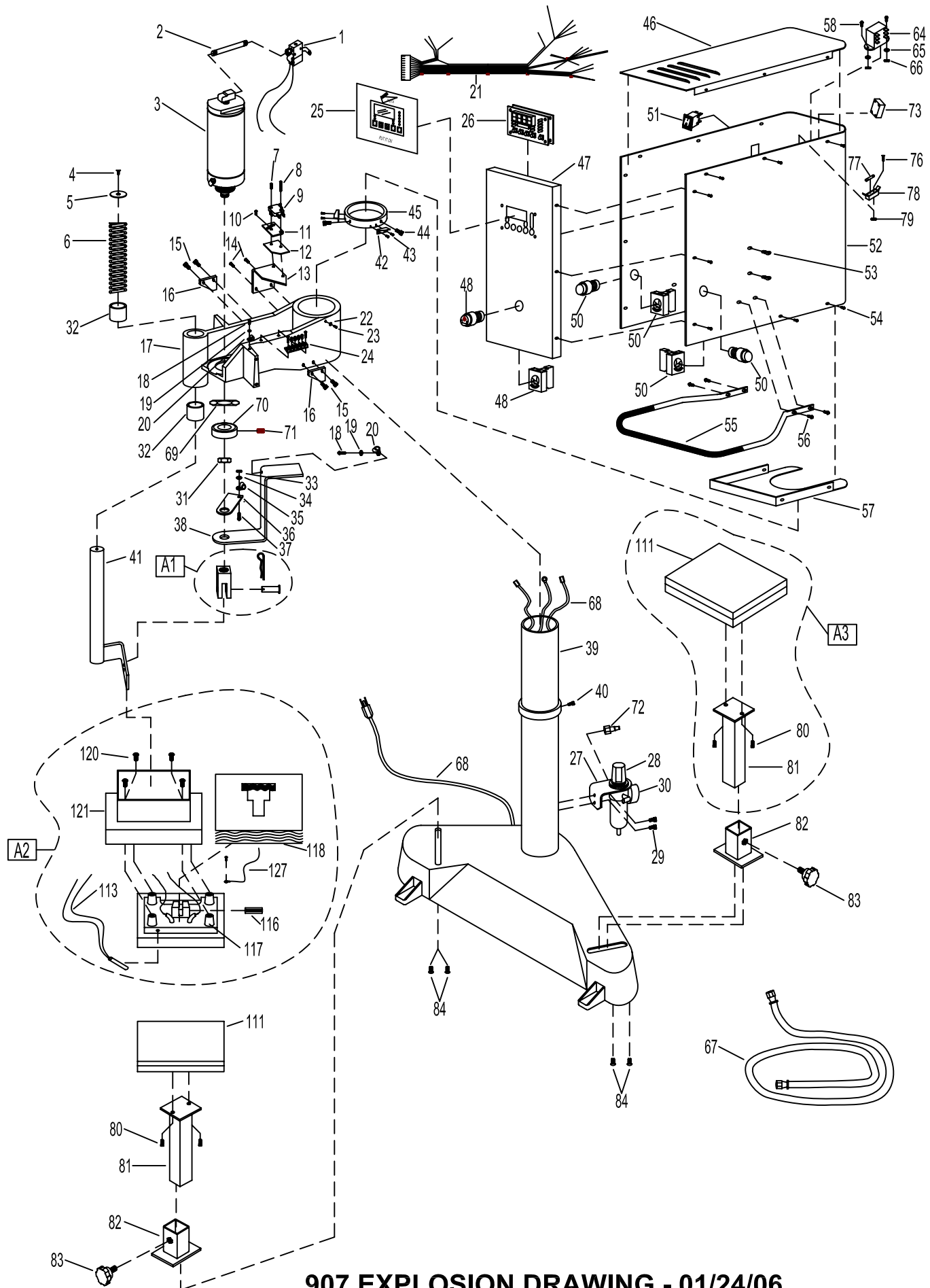
Voltage	230 Volts AC	50/60 Hertz
Model 907	4.0 Amps	920 Watts

Voltage	240 Volts AC	50/60 Hertz
Model 914	1.7 Amps	400 Watts

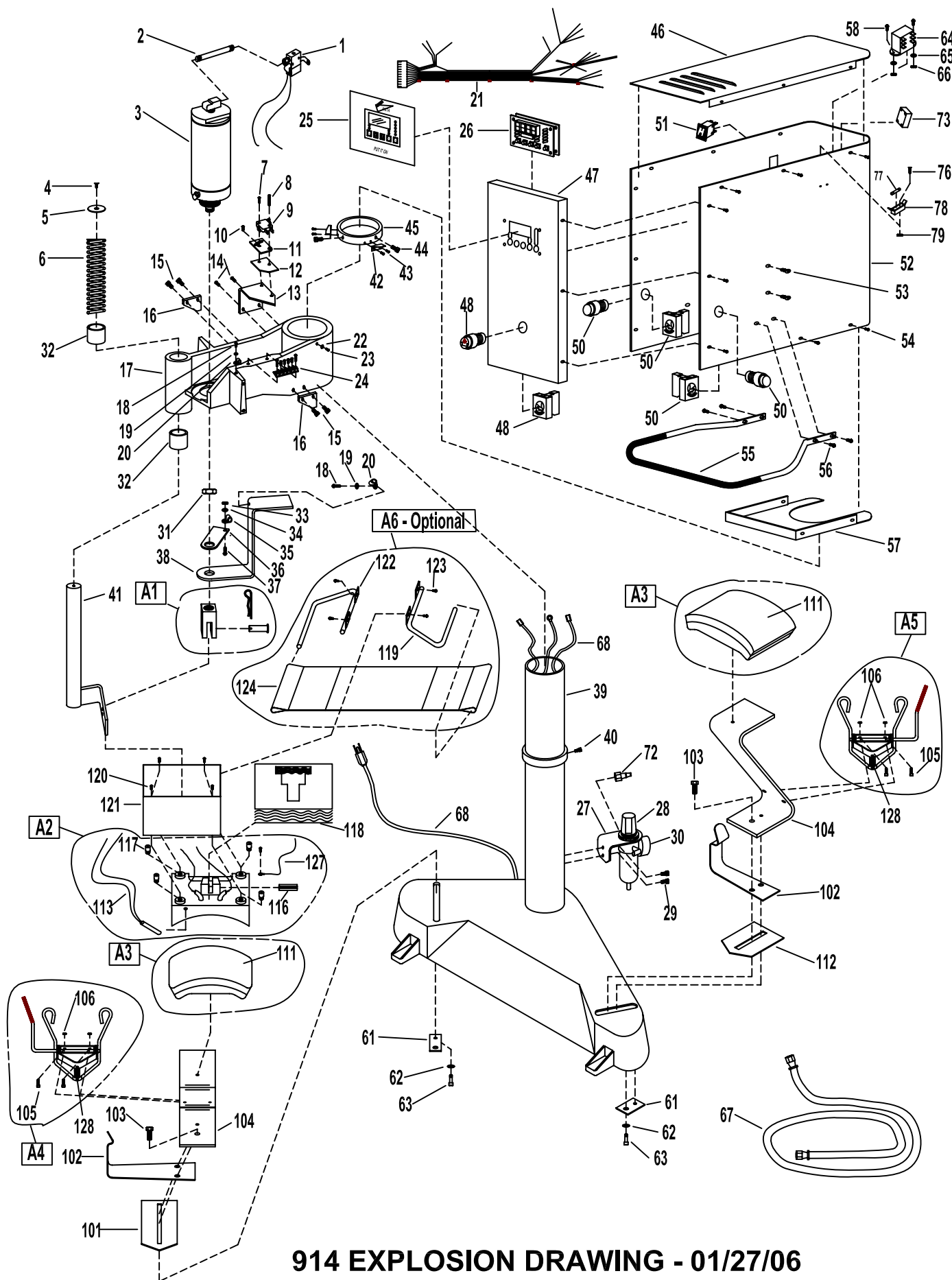
Weight Model 907/914	90 Pounds (40.8 KG)
----------------------	---------------------



907 914 Wiring - 08/11/05



907 EXPLOSION DRAWING - 01/24/06



914 EXPLOSION DRAWING - 01/27/06

907 914 PARTS LIST

		MODEL	MODEL	MODEL	MODEL
		907	907	914	914
NO	PART NAME	120V AC	230V AC	120V AC	240V AC
1	AIR SOLENOID VALVE ASS'Y	MPPA903	MPPA903	MPPA903	MPPA903
2	NIPPLE, CYLINDER	MHN14412	MHN14412	MHN14412	MHN14412
3	AIR CYLINDER ASS'Y	MPPA413	MPPA413	MPPA413	MPPA413
4	SCREW, COMPRESSION SPRING 1/4-20 X 3/4	MHSF142034	MHSF142034	MHSF142034	MHSF142034
5	WASHER, SPRING	MHWC716	MHWC716	MHWC716	MHWC716
6	SPRING, COMPRESSION	MPSS884	MPSS884	MPSS884	MPSS884
7	SCREW, MICRO SWITCH 4-40 X 1/2	MHSR44012	MHSR44012	MHSR44012	MHSR44012
8	SCREW, MICRO SWITCH 4-40 X 3/4	MHSR44034	MHSR44034	MHSR44034	MHSR44034
9	MICRO SWITCH (ARM)	MPPS044	MPPS044	MPPS044	MPPS044
10	SCREW, MICRO SWITCH 8-32 X 3/8	MHSP83238	MHSP83238	MHSP83238	MHSP83238
11	PLATE, MICRO SWITCH MOUNTING	MH700213	MH700213	MH700213	MH700213
12	INSULATOR, MICRO SWITCH	MH700214	MH700214	MH700214	MH700214
13	BRACKET, MICRO SWITCH	MPSM90018	MPSM90018	MPSM90018	MPSM90018
14	SCREW, MICRO SWITCH BRACKET 10-24 X 3/8	MHSP102438	MHSP102438	MHSP102438	MHSP102438
15	SCREW, STOP BRACKET 1/4-20 X 1/2	MHSH142012	MHSH142012	MHSH142012	MHSH142012
16	BRACKET, STOP	MPSM90010	MPSM90010	MPSM90010	MPSM90010
17	ARM ASS'Y	MPSA90021	MPSA90021	MPSA90021	MPSA90021
18	SCREW, 8-32 X 3/8	MHSP83238	MHSP83238	MHSP83238	MHSP83238
19	WASHER	MHWSAE8	MHWSAE8	MHWSAE8	MHWSAE8
20	CLAMP, CABLE	MHCC516	MHCC516	MHCC516	MHCC516
21	WIRE HARNESS	MPPW931	MPPW932	MPPW931	MPPW932
22	WASHER	MHWSAE8	MHWSAE8	MHWSAE8	MHWSAE8
23	SCREW, 8-32 X 3/8	MHSP83238	MHSP83238	MHSP83238	MHSP83238
24	TERMINAL BLOCK	MPST6014	MPST6014	MPST6014	MPST6014
25	LABEL, CONTROL PANEL OVERLAY	MPPL015	MPPL015	MPPL015	MPPL015
26	DIGITAL CONTROLLER	MPPT752	MPPT752	MPPT752	MPPT752
27	MOUNT, AIR REGULATOR FILTER	MPSM90009	MPSM90009	MPSM90009	MPSM90009
28	AIR PRESSURE/FILTER REGULATOR ASS'Y	MPPA900	MPPA900	MPPA900	MPPA900
29	SCREW, AIR FILTER 1/4-20 X 1/2	MHSH142012	MHSH142012	MHSH142012	MHSH142012
30	AIR GAUGE ASS'Y	MPPA025	MPPA025	MPPA025	MPPA025
31	NUT, JAM CLEVIS	MHJN21	MHJN21	MHJN21	MHJN21
32	BUSHING, GUIDE POST	MPSB070	MPSB070	MPSB070	MPSB070
33	NUT, HEX	MHJN21	MHJN21	MHJN21	MHJN21
34	WASHER	MHWSAE8	MHWSAE8	MHWSAE8	MHWSAE8
35	CLAMP, CABLE	MHCC516	MHCC516	MHCC516	MHCC516
36	BRACKET, WIRE STABILIZER	MPSM90019	MPSM90019	MPSM90019	MPSM90019
37	SCREW, 8-32 X 1/2	MHSP83212	MHSP83212	MHSP83212	MHSP83212
38	BRACKET, ELECTRICAL SUPPORT	MPSM90024	MPSM90024	MPSM90024	MPSM90024
39	BASE ASS'Y	MPSB90711	MPSB90711	MPSB90711	MPSB90711
40	SCREW, SOCKET 5/16-18 X 3/4	MHH5161834	MHH5161834	MHH5161834	MHH5161834
41	GUIDE POST ASS'Y	MPSC90008	MPSC90008	MPSC90008	MPSC90008
42	CAM, MICRO SWITCH	MPSC90020	MPSC90020	MPSC90020	MPSC90020
43	SCREW, PAN HD 6-32 X 1/4	MHSP63214	MHSP63214	MHSP63214	MHSP63214
44	SCREW, SOCKET HD 5/16-18 X 3/4	MHH5161834	MHH5161834	MHH5161834	MHH5161834
45	COLLAR, POST	MPSC90023	MPSC90023	MPSC90023	MPSC90023
46	PANEL, TOP COVER (SHEET METAL)	MPSM90004	MPSM90004	MPSM90004	MPSM90004
47	PANEL, FRONT (SHEET METAL)	MPSM90703	MPSM90703	MPSM90703	MPSM90703
48	DISENGAGE SWITCH ASS'Y	MPPS713	MPPS713	MPPS713	MPPS713
50	START SWITCH ASS'Y	MPPS703	MPPS703	MPPS703	MPPS703
51	POWER SWITCH (ON/OFF) ASS'Y	MPPS060	MPPS060	MPPS060	MPPS060
52	PANEL, WRAP AROUND (SHEET METAL)	MPSM90701	MPSM90701	MPSM90701	MPSM90701
53	SCREW, 10-24 X 3/8	MHSP102438	MHSP102438	MHSP102438	MHSP102438
54	SCREW, 6-32 X 1/4	MHP63214ST	MHP63214ST	MHP63214ST	MHP63214ST
55	HANDLE	MPSH900	MPSH900	MPSH900	MPSH900
56	SCREW, 8-32 X 1/2	MHSP83212	MHSP83212	MHSP83212	MHSP83212
57	PLATE, BOTTOM (SHEET METAL)	MPSM90002	MPSM90002	MPSM90002	MPSM90002
58	SCREW, TRANSFORMER	MHSP83238	MHSP83238	MHSP83238	MHSP83238

907 914 PARTS LIST

		MODEL	MODEL	MODEL	MODEL
		907	907	914	914
NO	PART NAME	120V AC	230V AC	120V AC	240V AC
61	BRACKET, ATTACHMENT (LOWER PLATEN ZEE)	N/A	N/A	MPSM90016	MPSM90016
62	WASHER, LOCK	N/A	N/A	MHWL516	MHWL516
63	SCREW, SHOULDER	N/A	N/A	MPSS410	MPSS410
64	TRANSFORMER	MPPT700	MPPT700	MPPT700	MPPT700
65	WASHER	MHWSAE8	MHWSAE8	MHWSAE8	MHWSAE8
66	NUT, TRANSFORMER	MHNH832	MHNH832	MHNH832	MHNH832
67	AIR HOSE	MPPA005	MPPA005	MPPA005	MPPA005
68	POWER CORD (USA MODEL)	MPPW141	MPPW162	MPPW141	MPPW162
68A	POWER CORD (EUROPEAN MODEL)	N/A	MPPW202	N/A	MPPW202
68B	POWER CORD (GREAT BRITAIN)	N/A	MPPW203	N/A	MPPW203
69	NUT, HEX JAM	MHNHJ114	MHNHJ114	N/A	N/A
70	SPACER, PISTON ROD	MPSB900	MPSB900	N/A	N/A
71	SCREW, SET 1/4-20 X 3/8	MHST142038	MHST142038	N/A	N/A
72	AIR FITTING (MALE)	MPPF085	MPPF085	MPPF085	MPPF085
73	RELAY, SOLID STATE	MPSR2450	MPSR2450	MPSR2450	MPSR2450
76	SCREW, FUSE	MHSF44038	MHSF44038	MHSF44038	MHSF44038
77	FUSE F1 (1 AMP 250V)	MPPF701	MPPF701	MPPF701	MPPF701
78	FUSE HOLDER ASSEMBLY	MPPF708	MPPF708	MPPF708	MPPF708
79	NUT, FUSE	MHNH440	MHNH440	MHNH440	MHNH440
80	SCREW, LOWER PLATEN TUBE	MHSH142012	MHSH142012	N/A	N/A
81	LOWER PLATEN SUPPORT TUBE	MPSP477	MPSP477	N/A	N/A
82	SOCKET, LOWER PLATEN	MPSP499	MPSP499	N/A	N/A
83	KNOB, LOWER PLATEN	MH4210H	MH4210H	N/A	N/A
84	SCREW, SOCKET ATTACHMENT	MHSB142012	MHSB142012	N/A	N/A
101	PLATE, SKID (LEFT)	N/A	N/A	MPSM90017L	MPSM90017L
102	CLIP, CAP HOLD DOWN HANDLE	N/A	N/A	MPSC412	MPSC412
103	BOLT, HEX	N/A	N/A	MHBH5161	MHBH5161
104	SUPPORT, LOWER PLATEN ZEE	N/A	N/A	MPSS471	MPSS471
105	SCREW, SOCKET HEAD 10-32 X 1/2	N/A	N/A	MHSH103212	MHSH103212
106	NUT, HEX	N/A	N/A	MHNH1032	MHNH1032
111	SILICONE RUBBER PAD	MPPP026	MPPP026	MPP90144	MPP90144
112	PLATE, SKID (RIGHT)	N/A	N/A	MPSM90017	MPSM90017
113	SENSOR, RTD	MPPS210	MPPS210	MPPS210	MPPS210
116	PIN, UPPER PLATEN	MHSF142058	MHSF142058	MHPR38112	MHPR38112
117	INSULATOR, SHROUD	MPSI089	MPSI089	MPSI089	MPSI089
118	INSULATION FIBERGLASS	MPSP249	MPSP249	MPSP249	MPSP249
120	SCREW, SHROUD (4 SET)	MPSS143	MPSS143	MPSS143	MPSS143
121	SHROUD, UPPER PLATEN	MPS90143	MPS90143	MPSS91405	MPSS91405
127	GROUND WIRING WITH SCREW	MPW90140	MPW90140	MPW90140	MPW90140
128	SPRING, HANDLE/HOLD DOWN	N/A	N/A	MPSS454	MPSS454
A1	CLEVIS ASS'Y	MPSC919	MPSC919	MPSC919	MPSC919
A2	UPPER PLATEN ASS'Y	MPP9071A	MPP9072A	MPSP917	MPSP918
A3	LOWER PLATEN ASS'Y	MASP475	MASP475	MASP469	MASP469
A4	RETAINER, CAP HOLDDOWN (LEFT)	N/A	N/A	MPSR900L	MPSR900L
A5	RETAINER, CAP HOLDDOWN (RIGHT)	N/A	N/A	MPSR900	MPSR900
A6	RETAINER, TRANSFER ASS'Y (OPTIONAL)	N/A	N/A	MASR025	MASR025

INSTA GRAPHIC SYSTEMS®

13925 E. 166th Street • Cerritos CA USA 90702-7900

Service: (800) 426-3609 • Fax: (562) 861-1519 • (562) 861-2566 • Sales: (800) 421-6971 (562) 404-3000 • Fax: (562) 404-3010
<http://www.instagramh.com>