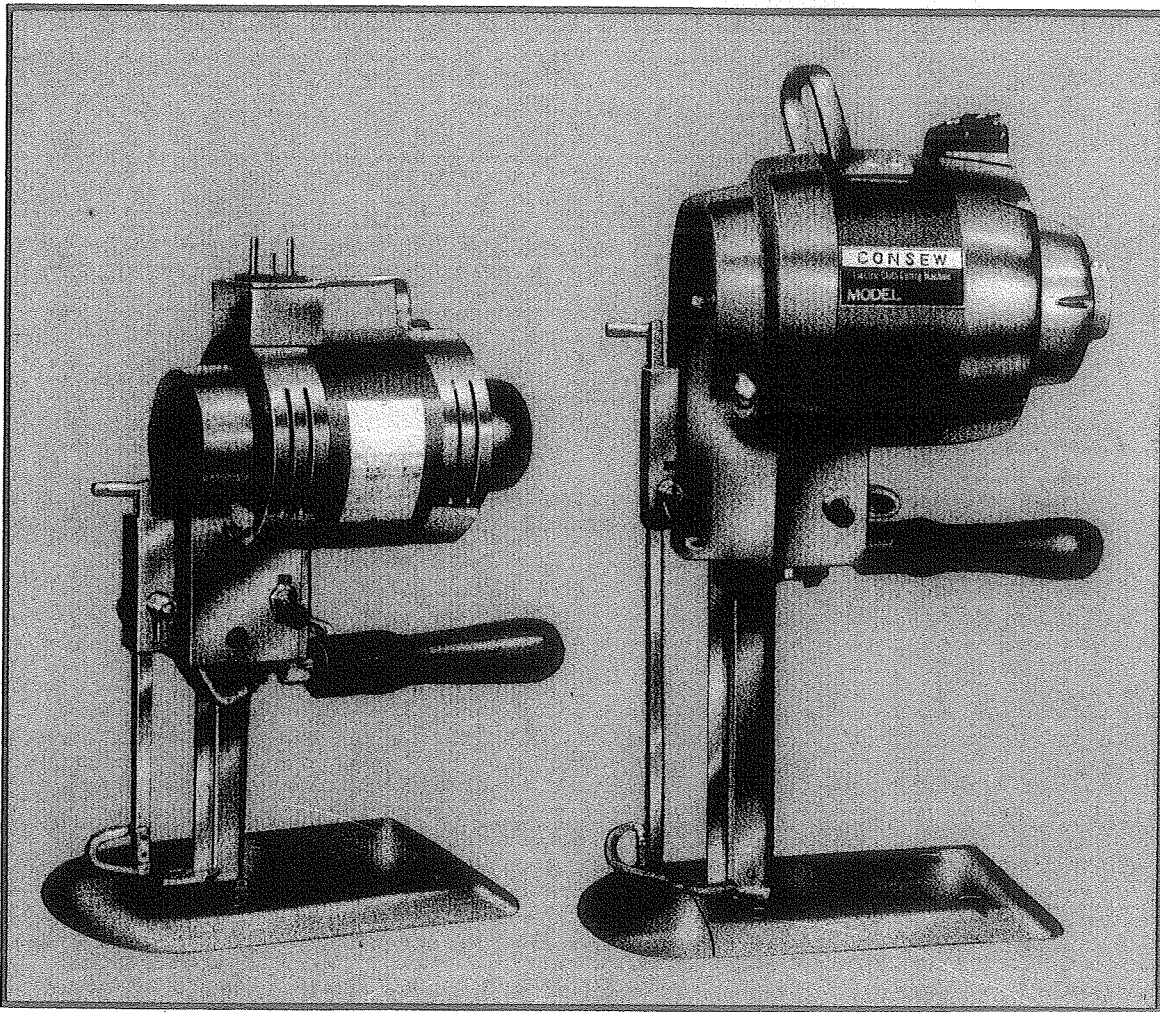


# 510/

## Instructions & Parts List



**CONSEW INTERNATIONAL LTD.**

Yamajin Bldg., 18, 1-chome, Hon-machi, Higashi-ku, Osaka 541, Japan  
P.O.Box: Osaka Higashi No. 509  
Telephone: Osaka 261-3291~3297 (7 Lines)  
Cable Address: "CONSEWMACH" Osaka  
Telex: J64459 CONSEW  
Fax: (06) 261-3298

84112C Printed in Japan



# Instructions

Consew Cutters are precision tools, made by master craftsmen.

In order to maintain this precision and the adjustments which are essential to satisfactory operation of your cutter, it is important to conscientiously follow these instructions.

## 1. Starting

Connect the cord supplied to machine terminal and then to the electrical outlet. Prior to operating the machine rotate the rotor hand pulley by hand. If pulley rotation is difficult, please refer to Item (4) below.

## 2. Cloth Presser Adjustment

To adjust the height of the cloth presser and fit the cloth to be cut, lift the shaft knob while lightly pressing down on the brake lever.

## 3. Knife Sharpening

Lift the cloth presser to its highest point and then sharpen the edge of the knife by hand with the emery stone. When sharpening the knife do not shave the stand and knife slide.

**Important Note:** Before doing any work on the machine, be sure to disconnect the machine from the electrical outlet.

## 4. Knife Installation

To change the knife, unscrew the knife lock screw with the box wrench and take the knife out. Prior to installing a new knife clean the stand groove and knife slide with the cleaner. It is recommended to use oil to achieve a cleaner stand groove. Make sure the knife lock screw is tight before starting the machine.

## 5. Other Precautions

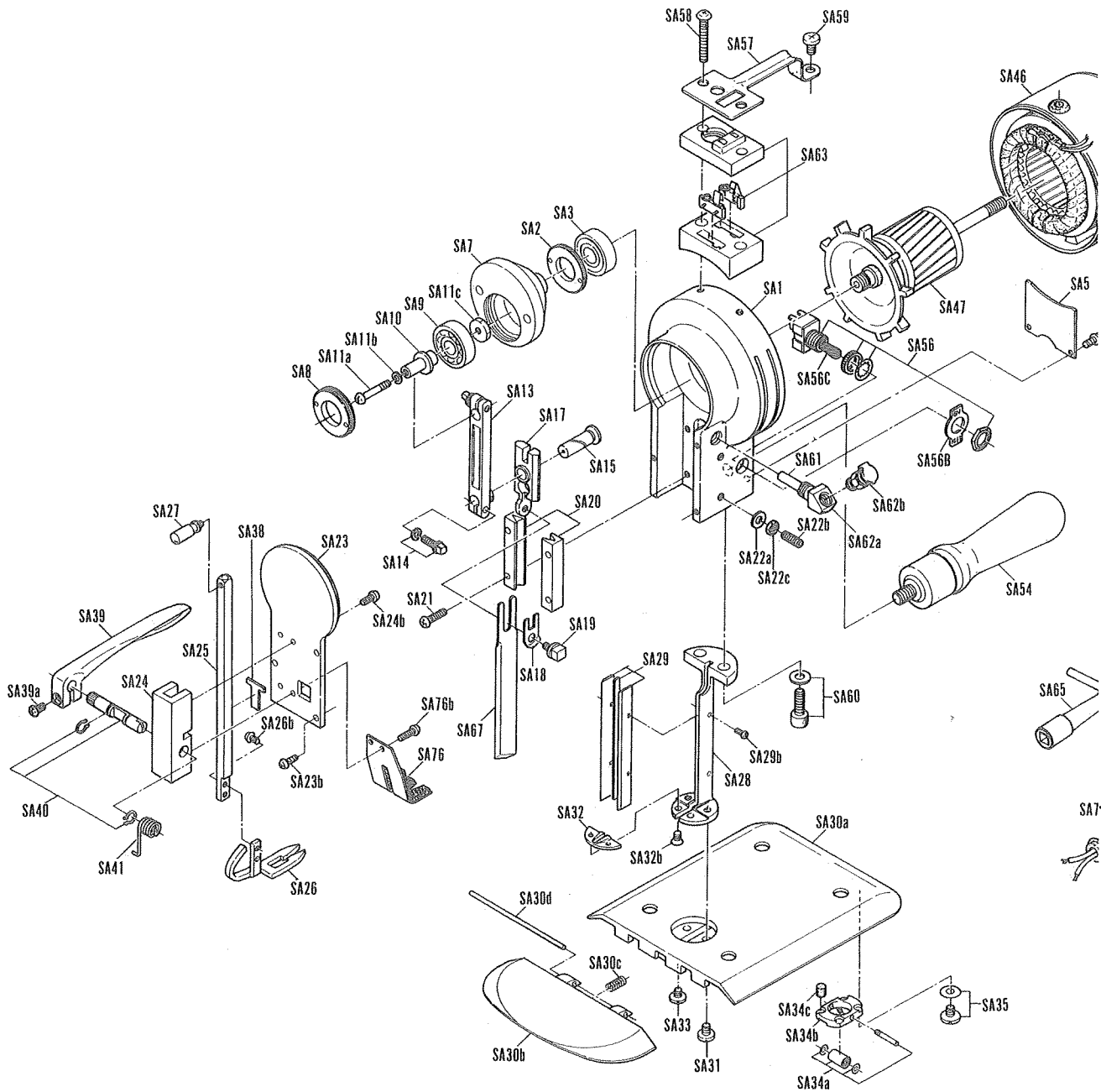
Occasionally, dust or lint will become trapped on a contact point of the stator base which may cause difficulty with starting the machine. In this case remove the dust from the contact point.

The machine requires a minimum of lubrication. Periodically, oil should be supplied through the oil cup. In order to lubricate all necessary parts after oiling, rotate the rotary hand pulley by hand, and switch the machine on and off intermittently. Oiling should also be done during the first week of operation of a new machine, and when the machine has been idle for a period of time.

Keep the machine clean by removing all accumulations of lint, thread and cuttings.

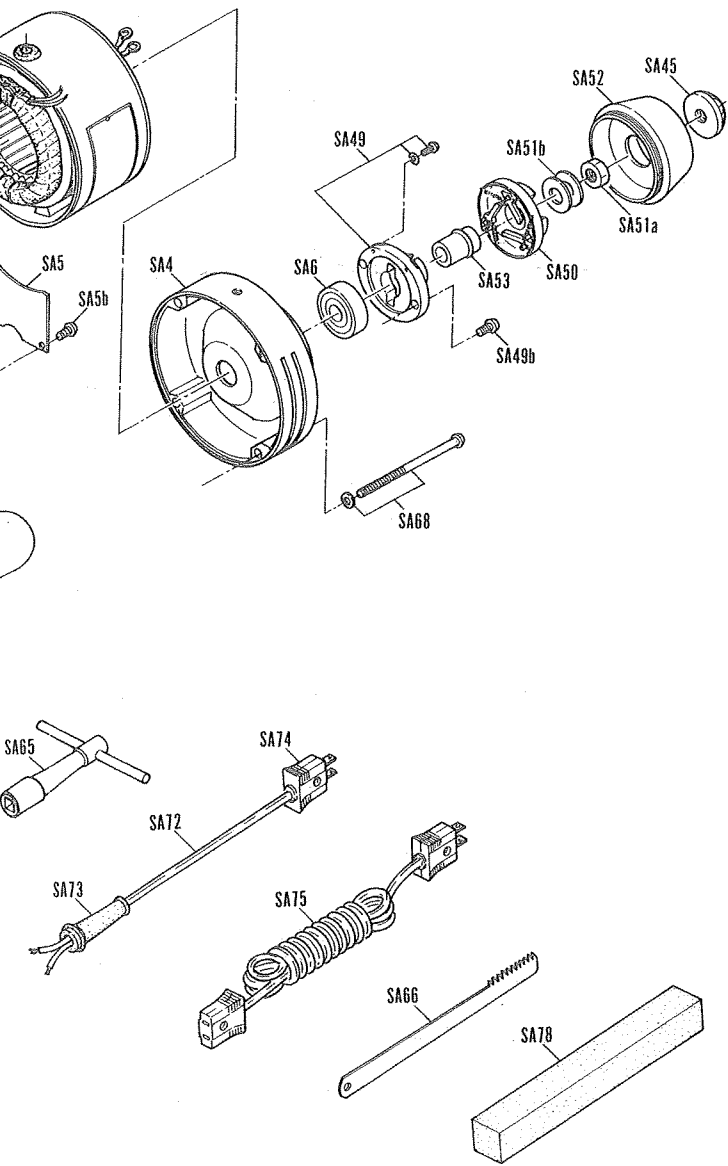


# Parts List (510)



Part No.	Part Name	Q'ty	Part No.	Part Name	Q'ty
SA1	Motor front cover	1 pc.	SA6	Ball bearing (#6200 ZZ)	1 pc.
SA2	Bearing cover	1 pc.	SA7	Balance	1 pc.
SA3	Ball bearing (#6200 ZZ)	1 pc.	SA8	Bearing cover	1 pc.
SA4	Motor rear cover	1 pc.	SA9	Ball bearing (#6200 ZZ)	1 pc.
SA5	Switch plate	1 pc.	SA10	Crank pin	1 pc.
SA5b	Screw	2 pcs.	SA11a	Screw	1 pc.





Part No.	Part Name	Q'ty
SA18	Knife lock plate	1 pc.
SA19	Knife lock screw	1 pc.
SA20	Guide metal	1 set
SA21	Guide metal fixed screw	4 pcs.
SA22 a	Guide metal washer	2 pcs.
SA22 b	Guide metal screw	2 pcs.
SA22 c	Guide metal nut	2 pcs.
SA23	Crank cover	1 pc.
SA23 b	Crank cover screw	3 pcs.
SA24	Pressure shaft holder	1 pc.
SA24 b	Pressure shaft holder screw	2 pc.
SA25	Pressure shaft	1 pc.
SA26	Pressure foot	1 pc.
SA26b	Pressure foot screw	2 pcs.
SA27	Pressure shaft knob	1 pc.
SA28	Stand	1 pc.
SA29	Knife slide	1 set
SA29b	Knife slide screw	2 pcs.
SA30a	Base	1 pcs.
SA30b	Front base	1 pc.
SA30c	Front base tension spring	1 pc.
SA30d	Front base pin	1 pc.
SA31	Cap screw	2 pcs.
SA32	Throat plate	1 pc.
SA32b	Throat plate screw	2 pcs.
SA33	Cap screw	2 pcs.
SA34	Roller assembly	4 sets
SA34a	Roller	4 sets
SA34b	Roller bracket	4 pcs.
SA34c	Roller cushion rubber	16 pcs.
SA35	Roller fixed screw & washer	8 sets
SA38	Stay piece	1 pc.
SA39	Brake lever	1 pc.
SA39a	Brake lever screw	1 pc.
SA40	Lever pin & snap ring	1 set
SA41	Lever spring	1 pc.
SA45	Rotor hand pulley	1 pc.
SA46	Motor field (stator) assembly	1 set
SA47	Rotor with shaft	1 pc.
SA49	Stator base (contact flange) assembly	1 set
SA49b	Stator base screw	2 pcs.
SA50	Rotor base (Governor)	1 pc.
SA51a	Rotor base nut	1 pc.
SA51b	Rotor base washer	2 pcs.
SA52	Rotor base box	1 pc.
SA53	Collar	1 pc.
SA54	Operating handle	1 pc.
SA56	Switch	1 set
SA56B	ON/OFF indication plate	1 pc.
SA56C	Switch cap	1 pc.
SA57	Carrying handle	1 pc.
SA58	Carrying handle screw (long)	2 pcs.
SA59	Carrying handle screw (short)	1 pc.
SA60	Stand fixed screw & washer	2 sets
SA61	Oil tube	1 pc.
SA62a	Oil tube fixture	1 pc.
SA62b	Oil cap	1 pc.
SA63	Terminal block	1 set
SA65	Box wrench	1 pc.
SA66	Knife groove cleaner	1 pc.
SA67	Knife (blade) 4"	1 pc.
SA68	Motor fixed screw & washer	4 set
SA72	Terminal cord	1 pc.
SA73	Terminal cord rubber	1 pc.
SA74	Cord plug	1 pc.
SA75	Electric cord with plug (10 feet)	1 pc.
SA76	Oil holder	1 pc.
SA76A	Screw	2 pcs.
SA78	Sharpening stone	1 pc.

Part No.	Part Name	Q'ty
SA17b	Washer	1 pc.
SA17c	Nut	1 pc.
SA13	Crank rod	1 pc.
SA14	Crank rod screw & washer	2 set.
SA15	Wrist pin	1 pc.
SA17	Cross head	1 pc.

