

Model 695HEX

EX-SERIES HIGH SPEED OVERLOCK MACHINE with TRACTOR FOOT

For Extra Heavy Weight Materials

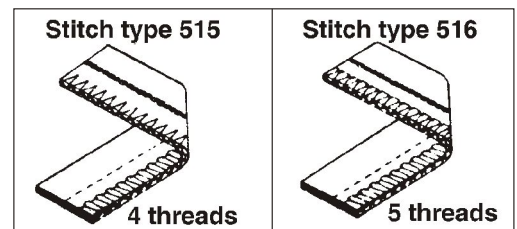
WITH
FULLY AUTOMATIC LUBRICATION
DIFFERENTIAL FEED with MICROMETRIC ADJUSTMENT
PUSHBUTTON STITCH REGULATOR

**ULTRA HIGH
FOOT LIFT**



Note: 695HEX has a fifth thread tensioner on the side

- Uses an extra high-throw upper looper, tractor foot and feed dog for sewing extra heavy-weight materials
- True safety stitch suitable for sewing products such as 12-ply, 14 oz. denim jeans, mats, carpets, auto trim, upholstery, canvas, tents, etc.



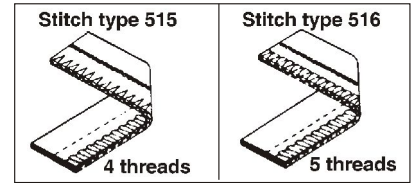
TWO NEEDLE — 5 THREAD

Model 695HEX

APPLICATIONS

For overlock sewing of heavyweight materials

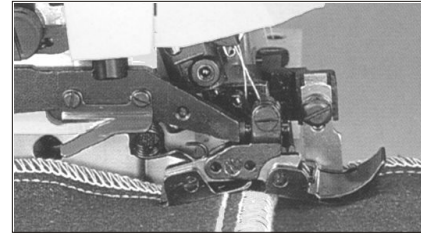
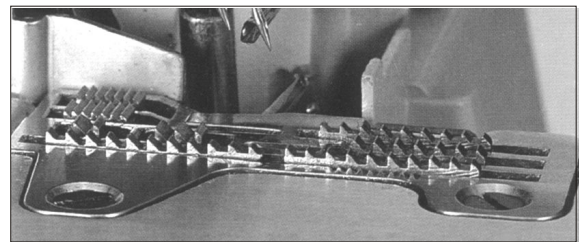
Model 695HEX - TrueSafety Stitch - suitable for sewing products such as vinyl, 12-ply, 14 oz. denim jeans, mats, carpets, auto trim, upholstery, canvas, tents, etc.



FEATURES

- Uses an extra high-throw upper looper, tractor foot and feed dog for sewing extra heavy-weight materials
- 695HEX - Speed, Max. up to 6000 s.p.m.
(Speed depends on materials, threads & operation)
- Fully automatic lubrication with visual flow controls
- Lubricating oil continuously filtered by replaceable filter
- External cooling of oil supply
- Differential feed with micrometric adjustment for shirring and stretching.
- Push-button stitch regulator
- Intermittent action possible
- Standard type 142X5 needles
- Tractor presser foot for sewing over seams
- Extra high presser foot lift
- Extra long stroke of upper looper
- Large, aggressive feed dog

LARGE FEED



TRACTOR FOOT

SPECIFICATIONS

Max. Sewing Speed:	6,000 S.P.M. *
Presser Foot Lift:	7.0 mm
Differential Ratio:	1 : 0.8 ~ 1 : 1.5
Needle Gauge (2)**:	5 mm standard
Needle System:	142X5
Overedging Width:	5, 6, 7 mm
Stitch Length, Max:	5 mm
Number of Threads:	2, 3, 4 or 5

* Speed depends on operation, materials and thread

** Call for information on other stitch patterns:

