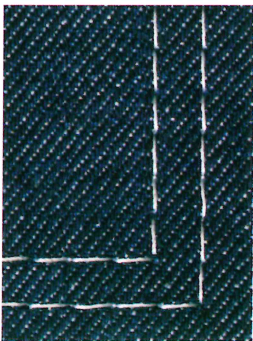


Since 1898
CONSEW®

MODEL 369RB-2

WITH
CENTRA-LUBE® SEMI-AUTOMATIC LUBRICATION SYSTEM
LARGE VERTICAL AXIS ROTARY HOOKS AND BOBBINS
DISENGAGEABLE RIGHT AND LEFT NEEDLE BARS
REVERSE FEED
SAFETY CLUTCH

WALKING FOOT
Double Needle
Split Bar

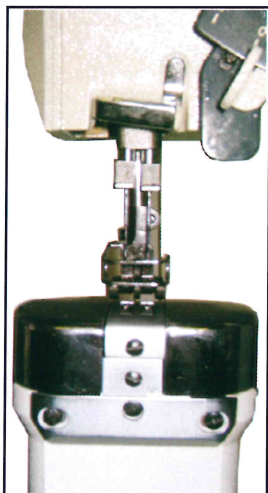


ANGULAR STITCHING



LARGE
BOBBIN

POST BED

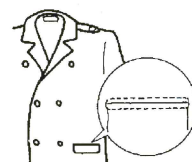


HEAVY DUTY
HIGH SPEED
POST TYPE
TWO NEEDLE
ANGULAR STITCHING
(SPLIT NEEDLE BAR)
DROP FEED, NEEDLE FEED
WALKING FOOT
ALTERNATING PRESSER FEET
LOCKSTITCH MACHINE

Model 369RB-2

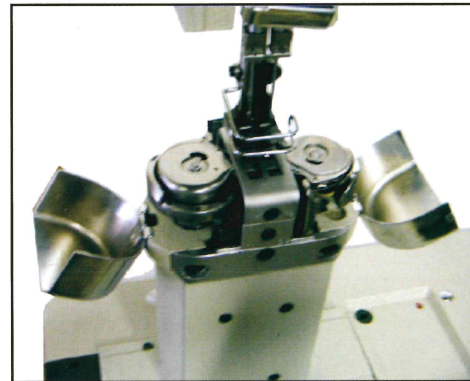
APPLICATIONS

- For sewing medium to medium heavy-weight fabrics, leather, canvas, vinyl, synthetics and various coated and laminated materials
- Designed for sewing operations which require decorative or functional angular stitching such as collars, pockets, shoe uppers, auto, boat and furniture upholstery, slacks, shirts, etc.
- Designed for stitching such products as overalls, raincoats, luggage, travelware accessories, bags, umbrellas, awnings, covers, tarpaulins, tents, wearing apparel, outdoor clothing, underwear, etc.
- General / parallel two-needle stitching with split bar for making even angle turns.
- Suitable for stitching uneven, hollow, tubular and curved articles



FEATURES

- Compound feed, walking foot mechanism assures perfect feeding of sewing material
- Large hooks and bobbin cases with their own thread take-up mechanism assure uniform and perfect stitching with minimal bobbin changes
- Easy operation of disengageable right and left needle bars by use of finger-touch lever
- Centra-Lube® semi-automatic lubrication system
- Oil fed take-up
- Stitches per minute - 2200
- Reverse stitching
- Various gauge sets available
- Safety clutch protects the hooks from being damaged



SPECIFICATIONS

Speed, Max. (S.P.M.) *	2200*	Hook	14005
(* Speed depends on operation, material and thread.)		Bed Size	7" x 20 ³ / ₈ " (177 mm x 518mm)
Clearance Under Foot	11/32" (8.5 mm)	Working Surface	2 ¹ / ₈ " x 4" (54 x 101 mm)
Needle Bar Stroke	1-1/4" (32 mm)	Post Height	7" (178mm)
Stitch Length, Max.	5 s.p.i. (5 mm)	Stitch Type	301
Needle	135 x 17	Needle gauges available: ³ / ₁₆ " - 1" (4.7 - 25.4 mm)	
Bobbin	Metal	16408	
	Pre-wound	U	

Specifications subject to change without notice.

©2007 Consew USA -107