

FOREX POWER PRO

1. Currently used by select **Professional traders**
2. **Easy to understand**
3. Be trading it in **less than 20 minutes**
4. **Catches trades early before big moves**
5. After captures **1:2 risk reward Ratios**
6. Works on every **currency pair**
7. Works on every timeframe
8. Could Easily sell

RISK DISCLOSURE STATEMENT / DISCLAIMER AGREEMENT

Trading any financial market involves risk. This report and all and any of its contents are neither a solicitation nor an offer to Buy/Sell any financial market.

The contents of this material are for general information and educational purposes only [contents shall also mean the website <http://www.russhorn.com> or <http://www.russhorn.biz> or any website ("the sites") the content is hosted on, and any email correspondence or newsletters or postings related to such website]. Every effort has been made to accurately represent this product and its potential. There is no guarantee that you will earn any money using the techniques, ideas and software in these materials. Examples in these materials are not to be interpreted as a promise or guarantee of earnings. Earning potential is entirely dependent on the person using the product, ideas and techniques. We do not purport this to be a "get rich scheme."

Although every attempt has been made to assure accuracy, we do not give any express or implied warranty as to its accuracy. We do not accept any liability for error or omission. Examples are provided for illustrative purposes only and should not be construed as investment advice or strategy.

No representation is being made that any account or trader will or is likely to achieve profits or losses similar to those discussed in this report or on <http://www.russhorn.com> or on the sites. Past performance is not indicative of future results.

By purchasing any content, subscribing to our mailing list or using the website or contents of the website or materials provided herewith, you will be deemed to have accepted these terms and conditions in full as appear also on our site, as do our full earnings disclaimer and privacy policy and CFTC disclaimer and rule 4.41 to be read here with. So too, all the materials contained within this course, including this manual, whether they appear on our domain(s) or are in physical form, are protected by copyright. "Warning: The unauthorized reproduction or distribution of this copyrighted work is illegal. Criminal copyright infringement, including infringement without monetary gain, is investigated by the authorities and is punishable with imprisonment and a fine." We reserve all our rights in this regard.

Alaziac Trading CC, in association with <http://www.tradeonix.com>, the sites, content, and its representatives do not and cannot give investment advice or invite customers or readers to engage in investments through this course or any part of it.

The information provided in this content is not intended for distribution to, or use by any person or entity in any jurisdiction or country where such distribution or use would be contrary to law or regulation or which would subject us to any registration requirement within such jurisdiction or country.

Hypothetical performance results have many inherent limitations, some of which are mentioned below. No representation is being made that any account will or is likely to achieve profits or losses similar to those shown. In fact, there are frequently sharp differences between hypothetical performance results and actual results subsequently achieved by any particular trading program and method.

One of the limitations of hypothetical performance results is that they are generally prepared with the benefit of hindsight. In addition, hypothetical trading does not involve financial risk and no hypothetical trading record can completely account for the impact of financial risk in actual trading.

For example, the ability to withstand losses or to adhere to a particular trading program or system in spite of the trading losses are material points that can also adversely affect trading results. There are numerous other factors related to the market in general or to the implementation of any specific trading program, which cannot be fully accounted for in the preparation of hypothetical performance results. All of which can adversely affect actual trading results.

We reserve the right to change the set terms and conditions without notice. You can check for updates to this disclaimer at any time by visiting <http://www.tradeonix.com>

Governing law: this policy and the use of this report / course / DVDs / eBook, provided in any form, and any content on the website are governed by the laws of the Republic of South Africa. If any dispute arises the parties have agreed to resolve it with the help of an arbitrator in the following location: Durban, South Africa. Further details on this are found under the Terms and Conditions on our site. Please ensure you have read and agree with all Terms and Conditions as set out on our site before using any of the materials. Your use and reliance on the materials is based on your acceptance of such Terms and Conditions and policies as appear on the site.

Table Of Contents

RISK DISCLOSURE STATEMENT / DISCLAIMER AGREEMENT.....	2
I. INTRODUCTION.....	4
II. INDICATORS	5
A. 20 EMA of the Highs and Lows	5
B. 10 EMA of the Highs and Lows	8
C. RSI	9
III. RULES	16
A. ENTRY Rules	16
1. Buy Trade	16
2. Sell Trade	17
B. STOP LOSS Rules	18
1. Buy Trade	18
2. Sell Trade	19
C. TAKE PROFIT Rules.....	20
1. Buy Trade	20
2. Sell Trade	21
IV. TRADE EXAMPLES	22
A. Complete Buy Trade.....	22
B. Complete Sell Trade	23
V. 2 TO 1 PROFIT TARGET OPTION.....	24
VI. RSI NEUTRAL ZONE	25
VII. RSI AS AN EXIT	27
VIII. MONEY MANAGEMENT	28
IX. CONCLUSION	29

INTRODUCTION

“Make things as simple as possible, but not simpler”

- Albert Einstein

This saying from the famous theoretical physicist is one of my favourites. This application can be applied to trading as well. Trading can be quite simple, but in an effort to filter trade signals, we sometimes add an extra dimension with an additional indicator or set of rules. This doesn't automatically make a trading system complicated, but there are limits to its simplicity.

This system is one such system.

There are 2 sets of indicators and no more. One indicator filters out the other and the average creates ideal trading opportunities. It's not as simple as a single indicator, but at the same time, is definitely not complicated.

I have been trading for a long time now, since 2000. I have seen a lot of trading systems, talked to a lot of professional traders, seen a lot of success stories and unfortunate failures. I have learned a lot and have been able to apply what I have learned.

This trading system was something I developed a while ago and has been used by a handful of professional traders with incredible success.

Why has it not been released for public use until now? The truth is that this system has an element of simple efficiency that seems to be looked down upon by the average day trader. They have it in their mind that if it works, it has to be complicated. This trading system is indeed simple in its application, but not so simple that it doesn't work properly.

I want you to make money trading; I want you to succeed as a trader. This is why I am willing to give away such a powerful trading system instead of selling it. I invite you to use this system, apply it in your daily trading and become profitable.

Best of luck!

INDICATORS

You will need only 3 indicators: For the entries:

- 20 Exponential Moving Average – applied to the high (dodger blue)
- 20 Exponential Moving Average – applied to the low (red)

For the trailing stop:

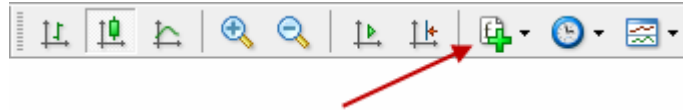
- 10 Exponential Moving Average – applied to the high (red)
- 10 Exponential Moving Average – applied to the low (dodger blue)

Additional entry indicator:

- Relative Strength Index – period 10 – levels at 45 and 55 (dodger blue)
- 10 Simple Moving Average applied to RSI (red)

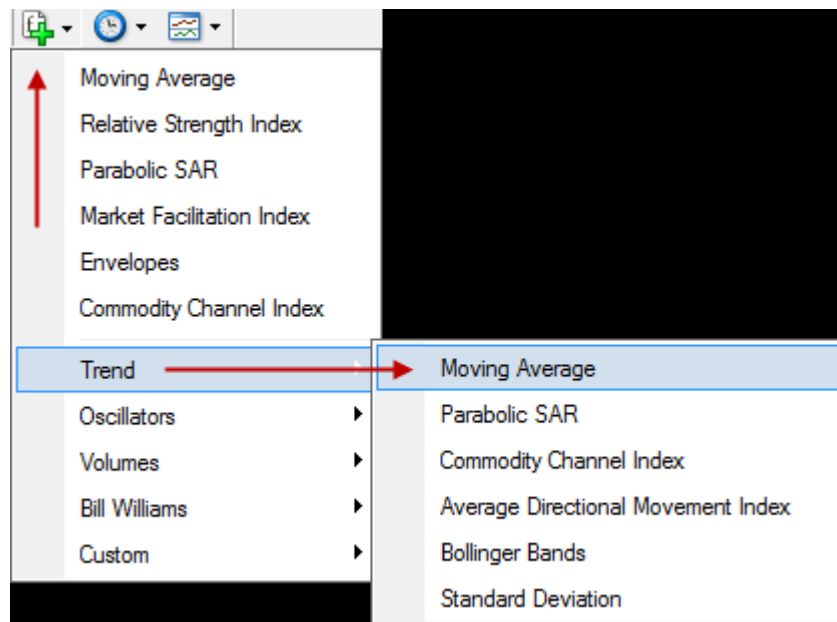
A) 20 EMA of the Highs and Lows

First, we add the 20EMA of the highs. You will find Moving Averages in your indicators files by clicking on the Indicators button in the toolbar,



Next, place your mouse over "Trend" and then click "Moving Average" from the new popup menu.

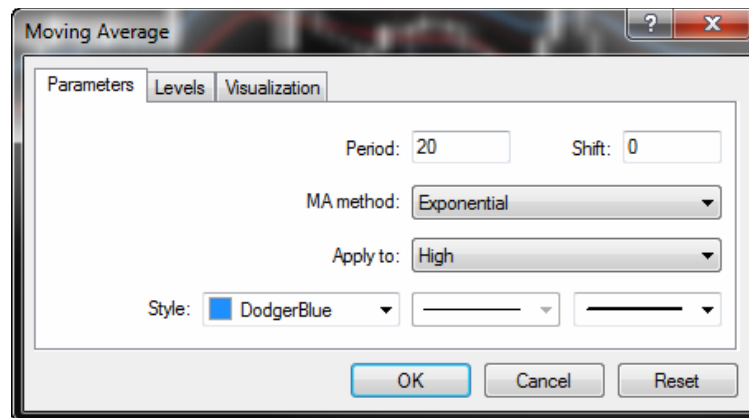
In my example below, the Moving average selection is at the top because I have recently used it, this might not be the case for you.



When you select the Moving Average indicator, the Moving Average properties box will pop up. Firstly, make sure the Parameters tab is chosen and then you need to fill it out so it looks like the one below. Once you have the fields properly filled out, click "OK".

Of course, you can make the colour and the line thickness anything you like, but the values should be the same:

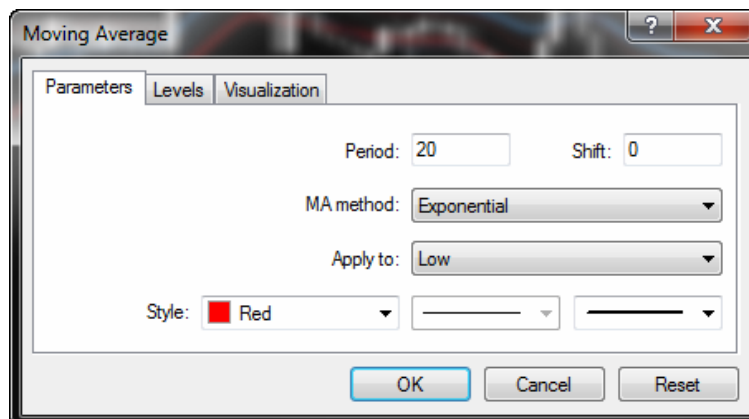
- Period: 20
- Shift: 0
- MA method: Exponential
- Apply to: High



Next, we add the 20 EMA of the lows.

Following the same steps as above, we apply a new moving average but this time, when the properties box pops up, we choose to apply to the lows. I also make this EMA a different colour. Once you have the field properly filled out, click OK.

- Period: 20
- Shift: 0
- MA method: Exponential
- Apply to: Low



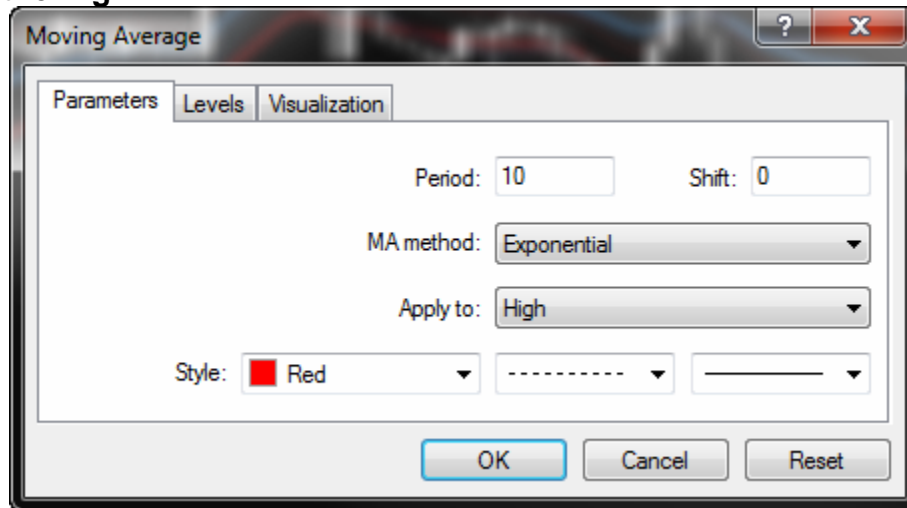
B) 10 EMA of the Highs and Lows

Just like how we added the 20 EMAs, we now add the 10 EMAs in exactly the same way.

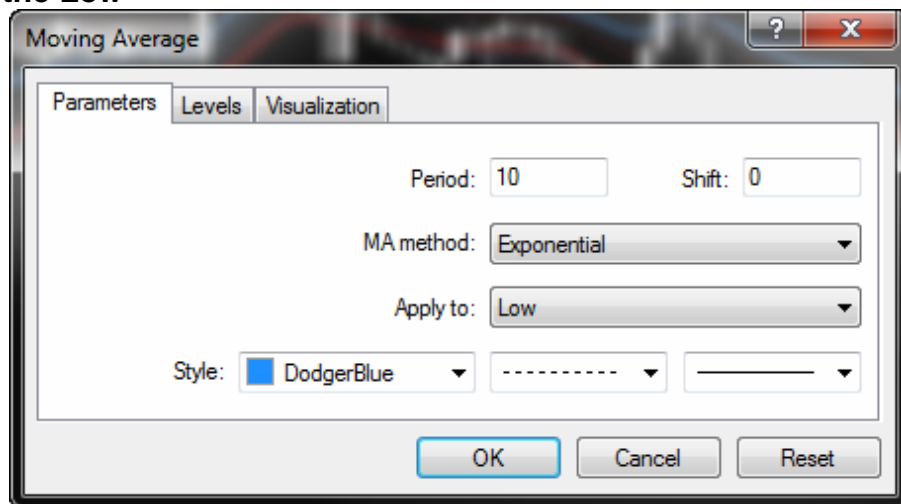
You will notice that for the 10 EMAs, the line colours have been reversed from the 20 EMAs. The 10 EMA high is coloured red and the 10 EMA low is coloured blue.

You will also notice that I have chosen the thinnest line and then chosen to make it a dotted line rather than a solid line. This will help us make the distinction between the lines on the chart.

10 EMA of the High

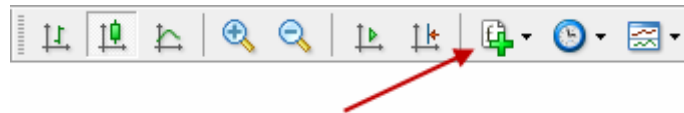


10 EMA of the Low



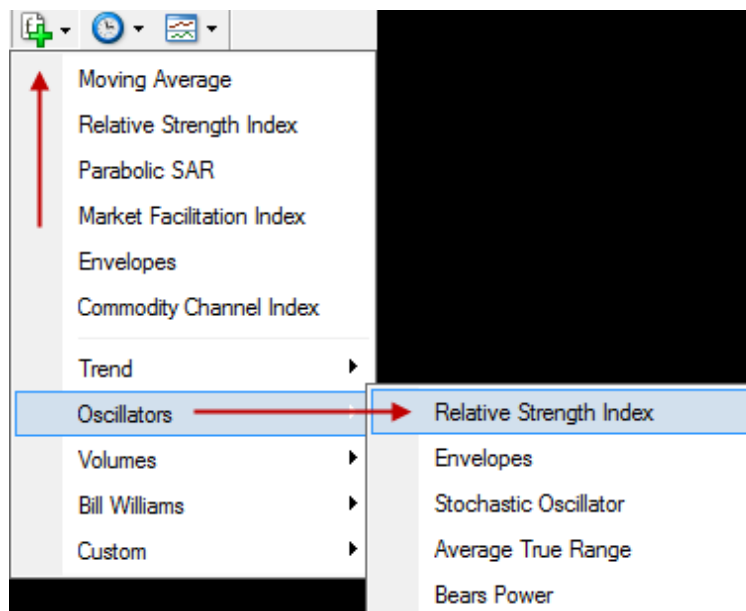
C) RSI

To add the Relative Strength Index, click the indicators button in the toolbar.



Next, place your mouse over Oscillators and then click Relative Strength Index from the new popup menu.

In my example below, the Relative Strength Index selection is at the top because I have recently used it, this might not be the case for you.

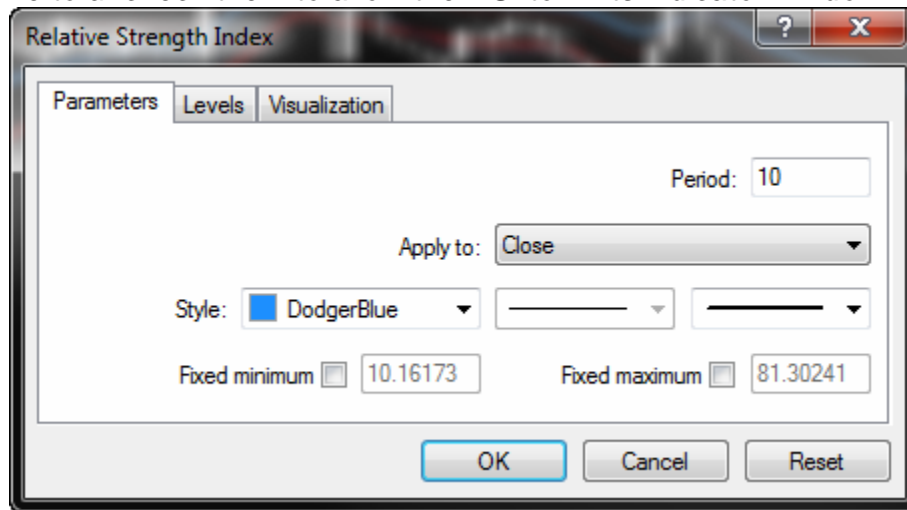


When you select the Relative Strength Index indicator, the Relative Strength Index properties box will pop up. First, make sure the Parameters tab is chosen, then you need to fill it out so it looks like the one below.

Of course, you can make the color and the line thickness anything you like (I use the second thickness in the selection), but the values should be as follows:

- Period: 10
- Apply to: Close

By default, the 2 check boxes at the bottom (Fixed minimum & Fixed maximum) will be checked. I like to uncheck them to allow the RSI to fill its indicator window.



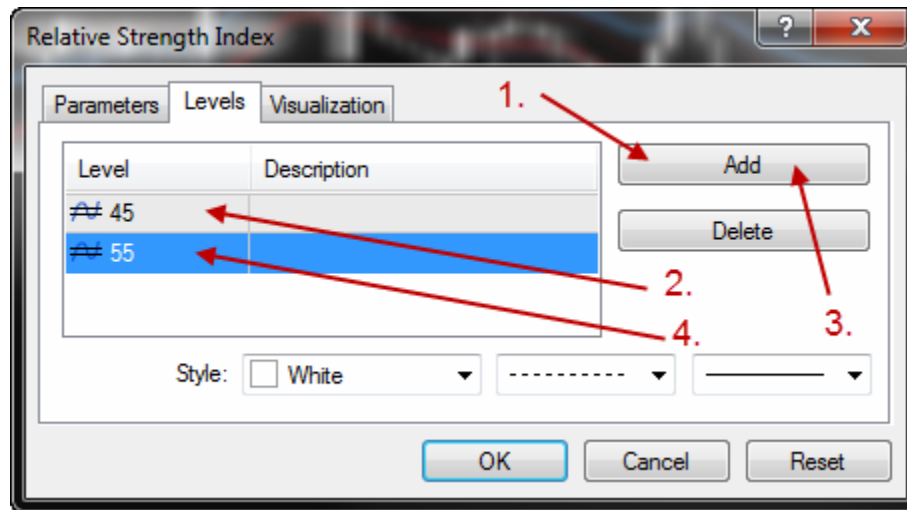
Next, we add the 45 and 55 levels to the RSI.

Click the "Levels" tab, then you need to add a 45 level and a 55 level to your Relative Strength Index.

Again, you can make the color and the line thickness anything you like.

1. Click the "Add" button and you will see a level appear in the level window.
2. Make the level 45.
3. Click the Add button again (you might have to click it twice to get a new level in the window).
4. Make this level "55".

Change the color and line thickness to what you like. I am using this on a black chart, so I made this level line white and I made the line a dotted line. Click "OK".



You now have MOST of the indicators with the proper settings on your chart. We still have to add the 10 SMA to the RSI.

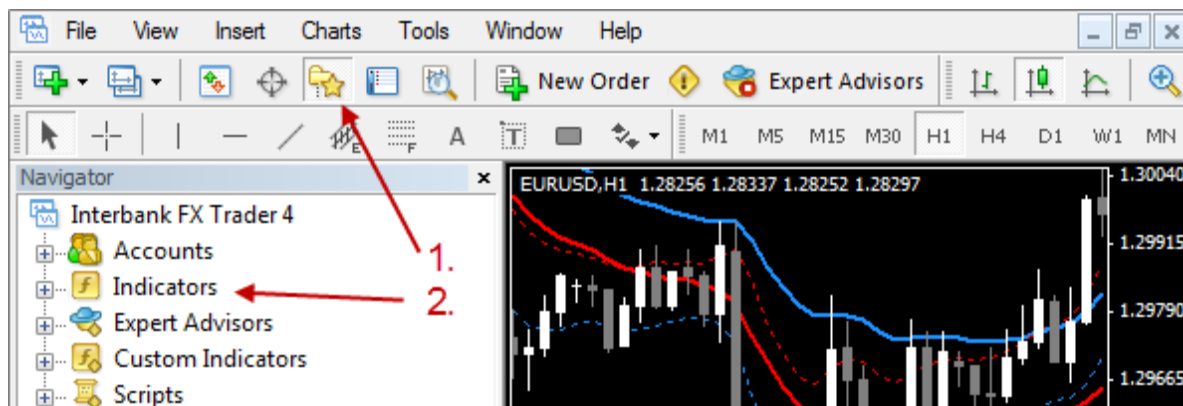
My chart is a black chart with white bull candles and grey bear candles.

After adding the Forex Power Pro indicators, your chart will look something like this:



The next step now is to add the 10 SMA to the RSI.

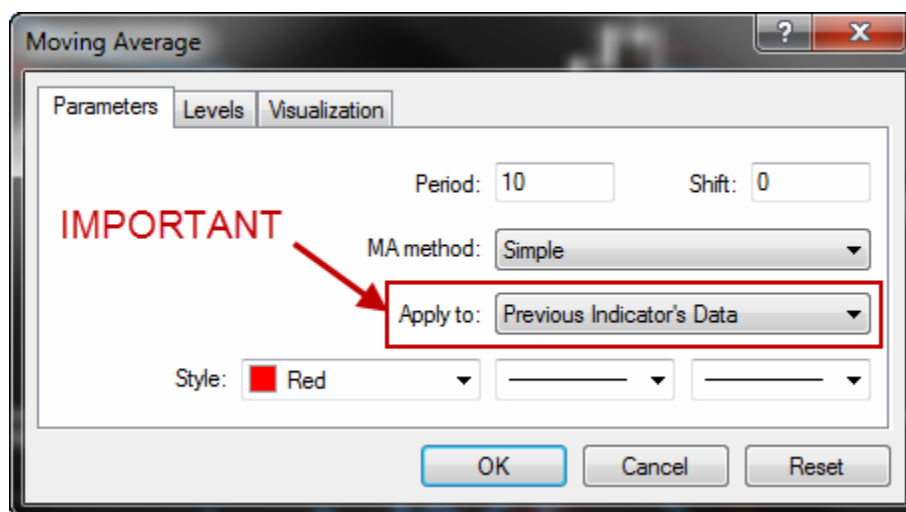
1. Click the Navigator button on your toolbar.
2. Double-click the Indicators folder to open it.



3. Once the Indicators folder is opened, scroll down until you see "Moving Average". Drag and drop that onto the RSI indicator window.



4. The Moving Average properties box will open. Make the settings:
- Period: 10
 - Shift: 0
 - MA method: Simple
 - Apply to: Previous Indicator's Data



Note:

The "Apply to" setting is very important. If it's not set to "Previous Indicator's Data", you will not get the moving average to appear on the RSI. It will instead appear on the price chart.

Once everything is filled out, click "OK".

Your finished chart will now look like this:



This system looks pretty simple. It is pretty simple. It works really well!

Just by looking at the chart, you can already see that it works, even without knowing exactly what to do.

Let's get ready to bank some pips!

Before we get to the rules of the system, let me first briefly explain what the different indicators are for.

20 EMAs of the highs and lows

These EMAs are used to find entry signals and to help us place an initial stop loss.

A close above the blue 20 EMA of the highs means we can place a buy trade. Our initial stop loss will go just under the red 20 EMA of the lows.

A close below the red 20 EMA of the lows means we can place a sell trade. Our initial stop loss will go just over the blue 20 EMA of the highs.

10 EMAs of the highs and lows

These are used for our trailing stop. Once the market starts to move in our favour, we will use the 10 EMAs as a guide for moving our stop loss. The 10 EMAs are coloured according to the 20 EMAs.

In a buy trade, we will use our blue 10 EMA of the lows to trail our stop loss. As price climbs, the 10 EMA of the lows will also climb. Each new closed candle will see us moving our stop to just under the 10 EMA of the lows.

In a sell trade, we will use our red 10 EMA of the highs to trail our stop loss. As price drops, the 10 EMA of the highs will also drop. Each new closed candle will see us moving our stop to just over the 10 EMA of the highs.

RSI and the 10 SMA

The RSI is a confirmation of an entry signal. We could literally trade using the RSI/10 SMA combination without ever looking at the price chart.

In a buy trade, we want to see the RSI move over the 55 line and at the same time be over the 10 SMA.

In a sell trade, we want to see the RSI move under the 45 line and at the same time be under the 10 SMA.

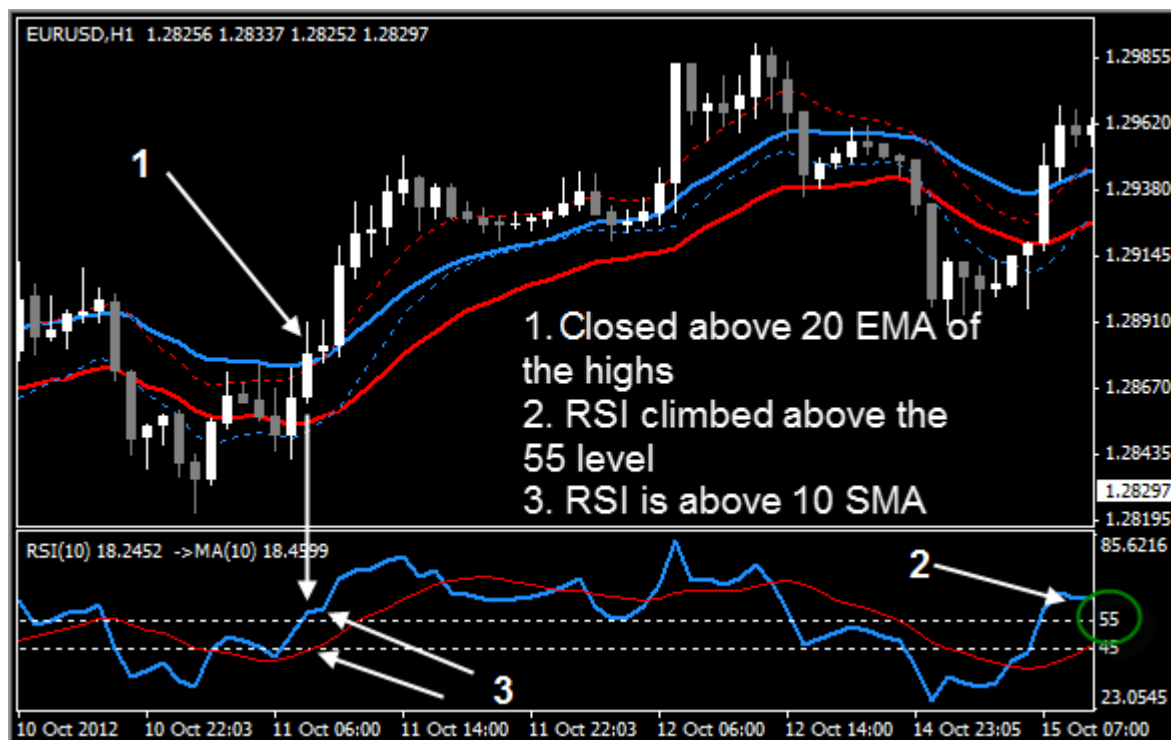
Time for the rules.

RULES

A. ENTRY Rules

1. Buy Trade

1. Price closes above the blue 20 EMA of the highs.
2. RSI is above the 55 line.
3. RSI is above the 10 SMA on the RSI indicator.



When all the elements fall together, we are good to enter the market in a buy trade.

2. Sell Trade

1. Price closes below the red 20 EMA of the lows.
2. RSI is below the 45 line.
3. RSI is below the 10 SMA on the RSI indicator.



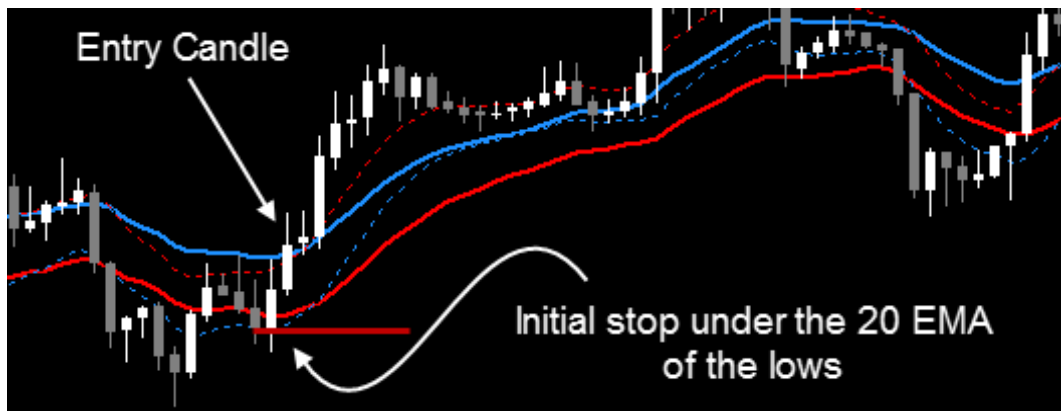
When all the elements fall together, we are good to enter the market in a sell trade.

B. STOP LOSS Rules

1. Buy Trade

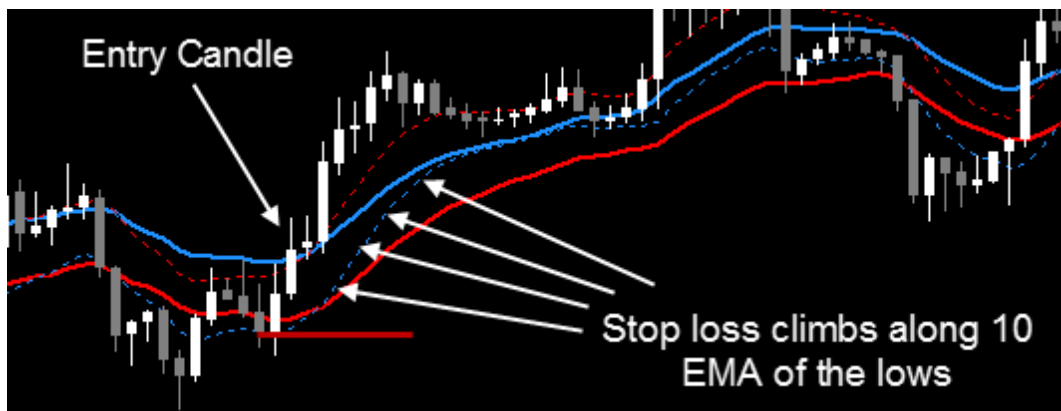
Initial Stop Loss

As we enter a buy trade, the initial stop loss will be placed a few pips under the red 20 EMA of the lows. (The term "a few pips" will range from timeframe to timeframe.)



Trailing Stop Loss

As new candles form and close, the stop loss will get moved along the blue 10 EMA of the lows (dotted line). This will reduce your risk almost immediately. This aspect is very important in any trading system.



When a candle closes, the 10 EMA of the lows will climb. This new position under the last closed candle is where we move our Stop Loss to.

2. Sell Trade

Initial Stop Loss

As we enter a sell trade, the stop loss will be placed a few pips over the blue 20 EMA of the highs. (The term “a few pips” will range from timeframe to timeframe.)



Trailing Stop Loss

As new candles form and close, the stop loss will get moved along the red 10 EMA of the highs (dotted line). This will reduce your risk almost immediately, this aspect is very important in any trading system.



When a candle closes, the 10 EMA of the highs will fall. This new position over the last closed candle is where we move our stop loss to.

C. TAKE PROFIT Rules

1. Buy Trade

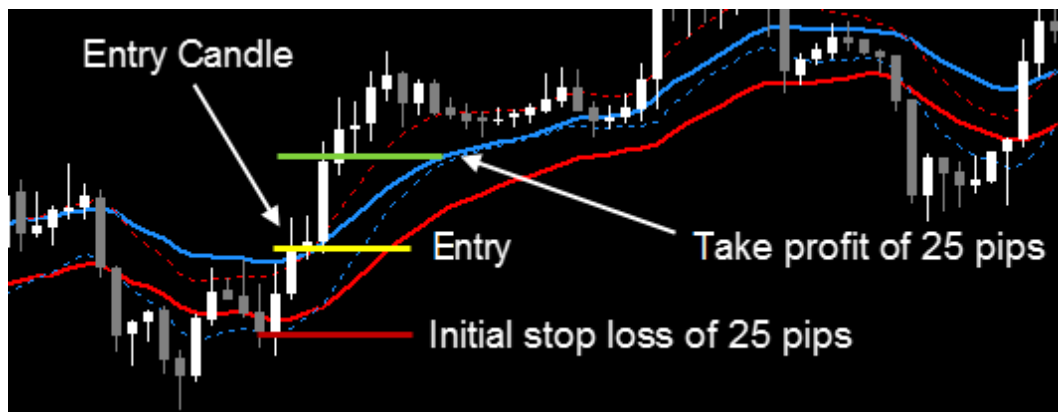
When we find a trade setup, how much do we go for? My general rule of thumb is a 1 to 1 risk to reward ratio.

As you can see by scrolling back through time on your charts, a "2 to 1" risk reward will work out very often.

To begin with though, the 1:1 is the safest bet. It will get you a ton of winners and reduce your losers.

So, what is a 1:1 risk reward ratio?

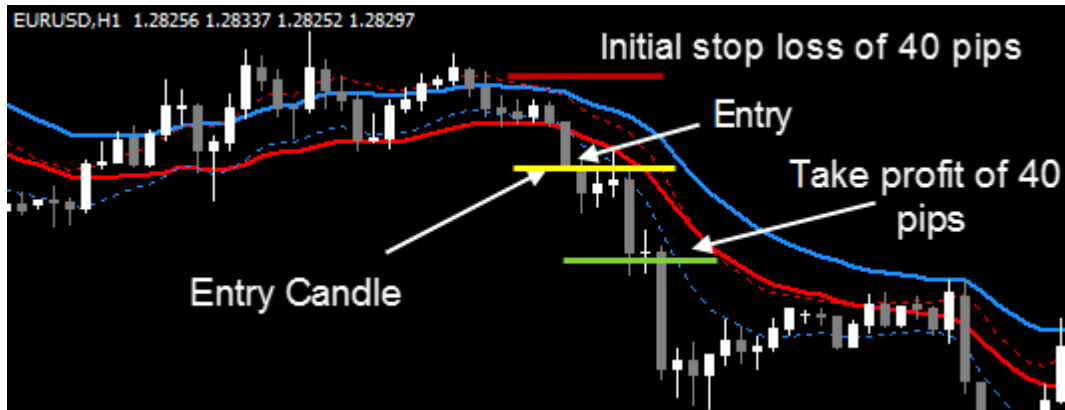
Whatever we set our stop loss to is what we go for as a profit target. For example, if our stop loss is 25 pips from where we enter the market, we will aim for a 25 pip profit target.



It's really that easy.

2. Sell Trade

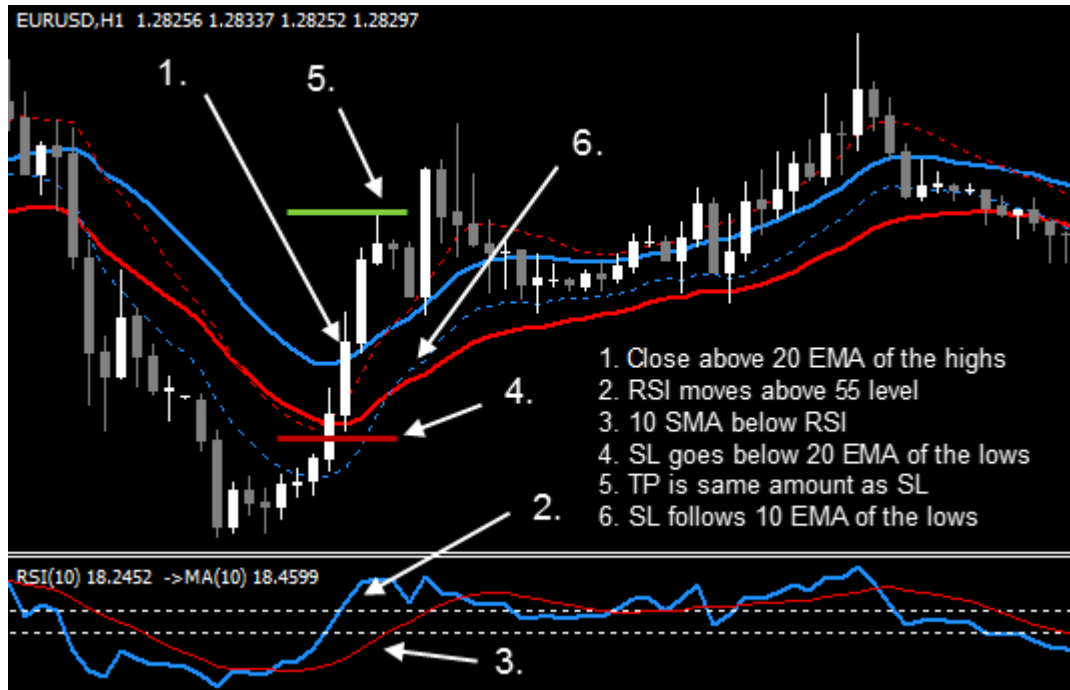
Following the 1 to 1 risk reward ratio, again we first look to the stop loss we have in mind. In the example below, the stop loss is 40 pips away from the entry. This is called the "Initial Stop Loss" as it's the initial one we place when we place the trade. It will be the farthest away we will get with our stop.



As the market moves in our favor, the stop loss will move closer to the entry level as the 10 EMA moves closer to the entry level. We do NOT change our take profit level to reflect the new Stop loss level. It will remain at the distance the Initial Stop Loss was placed.

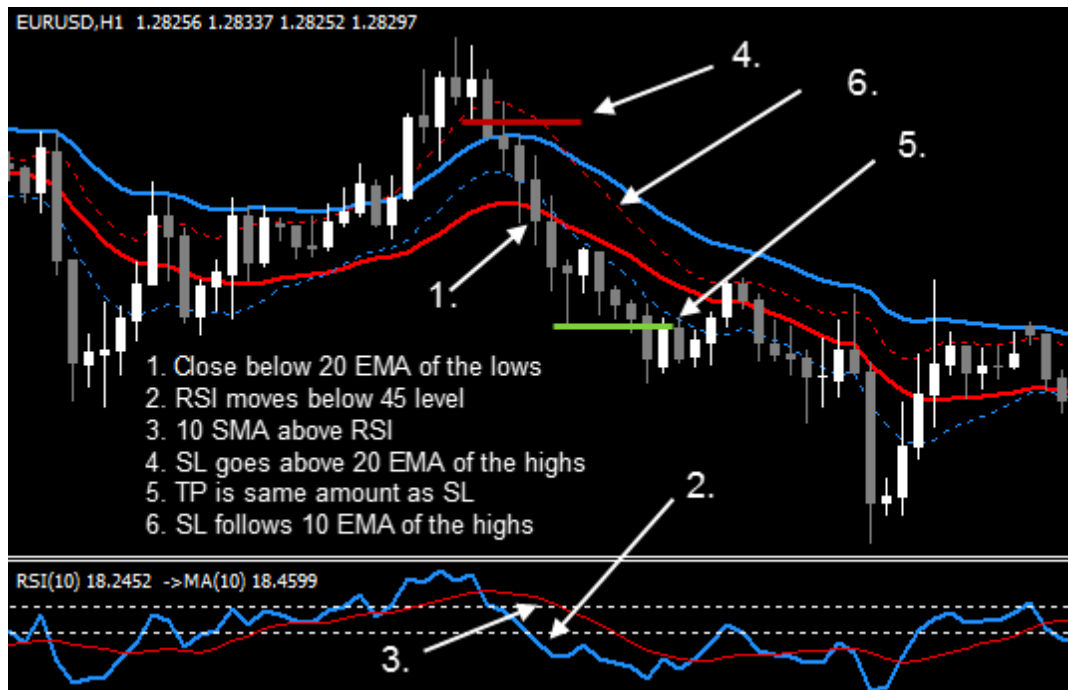
TRADE EXAMPLES

A. Complete Buy Trade



1. A candle closes above the 20 EMA of the highs.
2. The RSI moves above the 55 level.
3. The RSI is above the 10 SMA of the RSI.
4. The stop loss goes below the 20 EMA of the lows of the candle that signalled the entry. There's no need to look for swing lows, only the closed candle that triggered the entry. The Stop Loss is 35 pips on this trade.
5. The take profit will be 35 pips. Using the 1 to 1 (1:1) risk to reward ratio, if the stop is 65 pips, the take profit will also be 65 pips.
6. As the price moves in our favor, the stop loss will follow along the 10 EMA of the lows, reducing our risk and potential loss if we do lose this trade.

B. Complete Sell Trade



1. A candle closes below the 20 EMA of the lows.
2. The RSI moves below the 45 level.
3. The RSI is below the 10 SMA of the RSI.
4. The stop loss goes above the 20 EMA of the highs of the candle that signalled the entry. You don't need to look for swing highs, only the closed candle that triggered the entry. The Stop Loss is 65 pips on this trade.
5. The take profit will be 65 pips. Using the 1 to 1 (1:1) risk to reward ratio, if the stop is 65 pips, the take profit will also be 65 pips.
6. As the price moves in our favour, the stop loss will follow along the 10 EMA of the highs, reducing our risk and potential loss if we do lose this trade.

2 TO 1 PROFIT TARGET OPTION

You will find that a lot of your trades manage to hit twice what you are risking on it. This means that if you place a 50 pip stop loss, you can hit a 100 pip profit target.

This type of trade is one that can really skyrocket your profits and the benefit of this kind of target is that you only have to win 1 trade and lose 2 just to break even. That's a 33% win ratio in order to not make any money and not lose any money. With the proper trade management, you should never get anywhere near as low as that; you will be doing much better.

I mentioned trade management. If you are aiming for a 2:1 risk reward ratio, the best thing that you can do is manage the trade with your 10 EMA, but also it's important to move your stop loss to break even when you reach the 1:1 level. If you have a stop loss of 25 pips and you are aiming for 50 pips, move your stop to break even when the market hits 25 pips in profit.

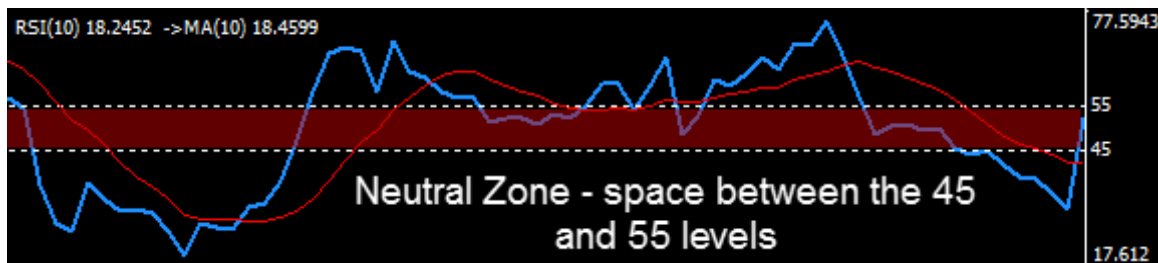


RSI NEUTRAL ZONE

You've noticed that there are 2 levels on the RSI. If you are familiar with the RSI at all, you will generally see only 1 line at the 50 level.

The RSI 50 line is like a busy intersection, and taking trades based on this can be extremely dangerous. The market at this level can be very undecided and choppy. The whole system has been built around the momentum the market has once it's made up its mind in a certain direction.

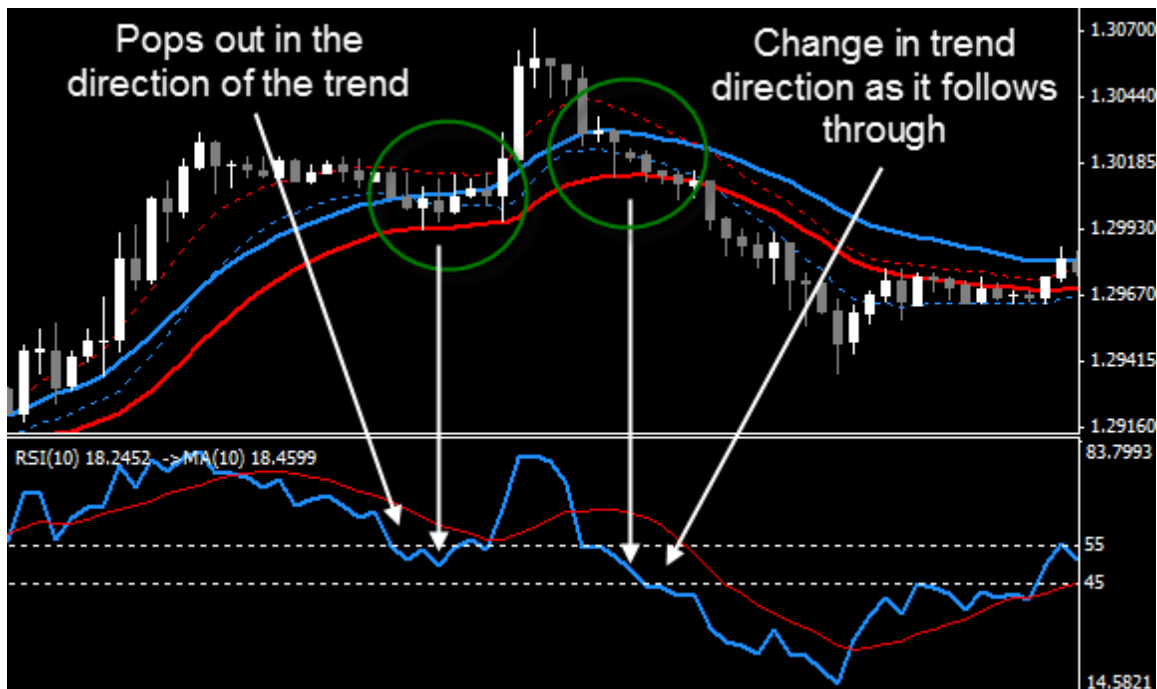
The space in between the 45 and 55 levels is a kind of a Neutral Zone. Once price has entered this zone, it doesn't mean that price will move through it. It's a "pit-stop" where the market can regroup.



Once price has entered the Neutral Zone, it can pop out in either direction. In a trend, it will pop out in the original direction... in a counter-trend, it will move right through.

Once the RSI is in the Neutral Zone, we can expect a new trade to happen and it could happen in either direction. Once we get a new trade, all the same rules apply, whether or not the trade is in the same direction as the previous one.

Here is an example of both trend and counter trend trades, after the RSI enters the Neutral Zone. Both yield successful trades.



RSI AS AN EXIT

This is to be used only after the market has started to move in your direction... using it too early could get you out of a trade before it even gets going.

Once the trade has started moving and the price has pulled away from the 20 EMAs, you can hold onto the trade until the RSI crosses over the 10 SMA on the opposite direction. This quite often can get you out of a trade at almost the best possible time.



This works best when both the RSI and its 10 SMA have moved outside of the Neutral Zone and price is moving nicely.

Note:

I still prefer the 1:1 exit, but for traders who want to hang onto their trades longer, this could be an excellent way to get a lot out of the potential generous market moves.

MONEY MANAGEMENT

This is an important aspect to touch on.

When placing a trade, you never want to put so much at risk that you could potentially deplete your account in a very short time. You want to be here, for not just a long time, but for as long as you want to be here.

I will tell you what I do as far as money management goes.

I never risk more than 2% on any given trade. As for beginners, I strongly suggest that they risk no more than 1%. This means that if your initial stop loss gets hit, you don't lose more than 1% of your total account balance.

Next is the total number of open trades that are subject to possible losses. If you are risking 2% on 3 open trades, your "exposure" is 6%. I will limit my exposure to 6%, but I prefer 5%.

This system is a profitable system, and the trade management will mean that your losses are usually smaller than your wins. If you manage your money properly, you will be trading the FX markets for years to come.

Forex trading has acquired a name for quick profits, and you can indeed make money quickly trading Forex. Shady Forex marketers will have you believe that you can become a millionaire in a few short weeks, maybe a couple of months. This simply isn't the case, and trying to do so can lead to disaster.

Learn control and manage your money. You won't win every trade (you CAN'T win every trade) and there will even be times when you have a string of losses. These times are survivable with the right money management.

The good news is that you can absolutely grow your trading account to something that most people would envy, but it will happen over time and with strict trade and money management.

CONCLUSION

I know that you have received this trading system free of charge.

I also know that most traders will not take the time to test and properly respect a free trading system.

What I want is for you to succeed.

I have done very well as a Forex trader and as an educator. This trading system is free because it's one way that I can help my fellow traders achieve the heights I have been able to reach.

I sincerely hope that you will treat this system as a trading system that can help you get to your dreams and accomplish your goals as a trader.

This system is one of my own, it's been around for a while and it's been used by some of the best traders I know. It works, simple as that!

Please enjoy this system and let it help you achieve your goals!

Thank you very much for your time and your consideration. Best of luck to you in your trading and in your life as a whole!

Russ Horn

This image shows a single sheet of white paper with horizontal ruling lines. The lines are evenly spaced and run across the width of the page. There are no margins, text, or other markings on the paper.