

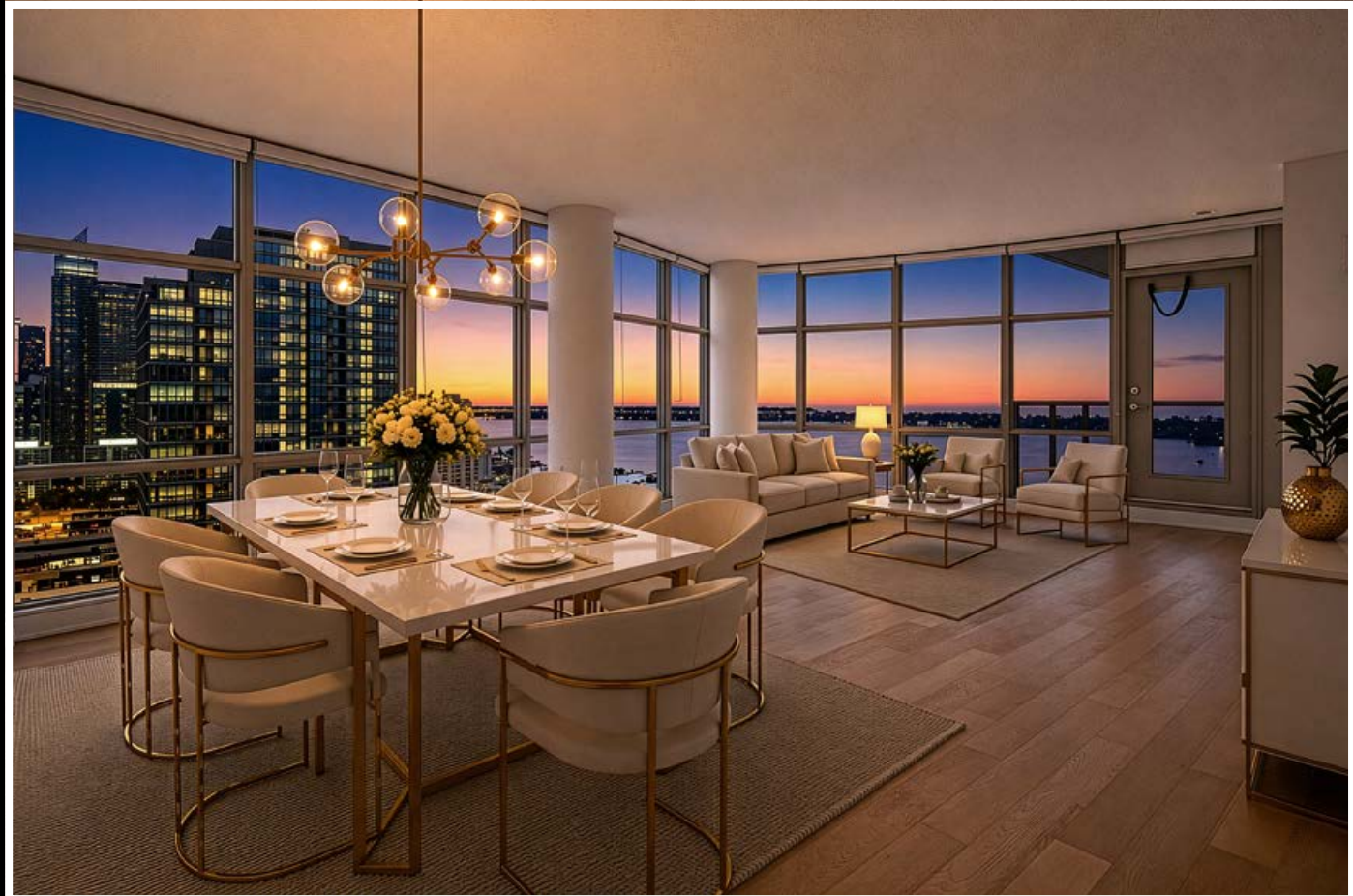
35 Mariner Terrace

SUITE 3509

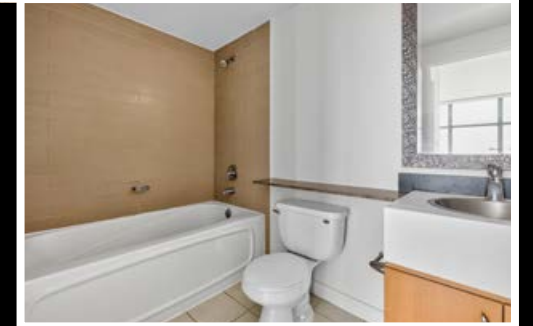


Panoramic Waterfront Living

Perched on the 35th floor, Suite 3509 at 35 Mariner Terrace presents an exceptional opportunity to experience elevated waterfront living in the heart of downtown Toronto. This beautifully appointed two-bedroom residence is framed by floor-to-ceiling windows that showcase breathtaking panoramic views spanning from east to west across Lake Ontario. From the iconic CN Tower and Rogers Centre to Billy Bishop Toronto City Airport and the picturesque Toronto Islands, the ever-changing skyline and shimmering waterfront provide an unforgettable backdrop from sunrise to sunset.



Designed with both comfort and functionality in mind, the thoughtfully planned layout features two spacious bedrooms, each offering spectacular lake views that make every morning feel extraordinary. The serene primary suite is a private retreat complete with its own ensuite bathroom, creating the perfect space to unwind while overlooking the water. Whether entertaining against the dramatic city skyline or enjoying a quiet evening as the lights of Toronto come alive, every room has been designed to maximize the remarkable setting.





Residents enjoy access to an outstanding collection of resort-inspired amenities that enhance everyday living. A fully equipped fitness centre, full size gymnasium, indoor pool, bowling lanes, juice bar, billiard and games room, whirlpool, sauna, party and meeting rooms, guest suites, visitor parking, and 24-hour concierge service provide the convenience and lifestyle expected of a premier waterfront address. Perfectly situated just steps from Toronto's vibrant waterfront, parks, cafés, restaurants, and entertainment venues, Suite 3509 combines luxurious interiors, exceptional amenities, and sweeping lake and skyline views to deliver an unparalleled downtown living experience.

