



# Tallgrass Classic



**KBAR Events**

**& Kansas Age Group Championships  
4-5 May 2013 Manhattan, KS**

V 18 Apr

Held under USA Cycling Event permit # 2013-679

Register at [www.usacycling.org](http://www.usacycling.org)

Online Registration closes 2 May (2400hrs)

Day of race registration available. (Road Race: 0800-0945) , (Crit: 0700-1400 closes 30 min. prior to race category)

Both races are part of the 2013 KCA KBAR/KBAT Series. Individual (x2) and team points will be awarded towards the KBAR/KBAT & Keen Wealth Cup Championships per the 2013 KCA KBAR/KBAT rules.

2012 KBAR winners receive free entry in these races.



## Tuttle Creek Lake (dam), Manhattan

## Manhattan City Park

Road Race (RR) 4 May					
Category	Dist	State Title	KBAR	Prize	Start
Jr 10-14 (All)	13 mi	Yes	Yes	m**+ A	1000
Men 1/2/3	87 mi	No	1/2 & 3	300/5	1030
Men 35-49	62 mi	Yes	40-49	m** + 60/3	1035
Men 50-59	62 mi	Yes	Yes	m** + 60/3	
Men 4	62 mi	No	Yes	300/5	1045
Women 1/2/3	62 mi	No	Yes	230/3	1055
Men 5	37 mi	No	No	60/3	
Men 60+	37 mi	Yes	Yes	m** + 30/1	1100
Jr 17-18 (boys)	37 mi	Yes	Yes	m**+ A	1105
Jr 15-16 (boys)	37 mi	Yes	Yes	m**+ A	
Women 35+	37 mi	Yes	40-49 & 50+	m** + 60/3	1110
Women 4	37 mi	No	Yes	60/3	
Jr 15-18 (girls)	37 mi	Yes	Yes	m**+ A	

Criterium (Crit) 5 May					
Category	Duration	State Title	KBAR	Prize	Start
Men 60+	30 min	Yes	Yes	m** + 30/1	0800
Jr 10-14 (All)	30 min	Yes	Yes	m**+ A	0801
Jr 15-18 (girls)	40 min	Yes	Yes	m**+ A	0845
Women 35+	40 min	Yes	40-49 & 50+	m** + 60/3	0846
Men 5	40 min	No	No	60/3	0940
Men 50-59	40 min	Yes	Yes	m** + 60/3	1135
Jr 17-18 (boys)	40 min	Yes	Yes	m**+ A	1136
Jr 15-16 (boys)	40 min	Yes	Yes	m**+ A	
Women 1/2/3	40 min	No	Yes	230/3	1230
Women 4	40 min	No	Yes	60/3	1231
Men 4	50 min	No	Yes	300/5	1325
Men 35-49	50 min	Yes	40-49	m** + 60/3	1430
Men 1/2/3	60 min	No	1/2 & 3	300/5	1535

\*\* Must be Kansas resident and be an annual license holder to win medals (in state title races).

Jr boys & girls compete separately in age groups 10-12, 13-14, 15-16, 17-18 (For cash & state medals).

Cash prizes for all non-Jr groups... you are competing against everyone in that start group. (example: 35 vs 49 year old)

Fee per (Jrs=\$15, rest=\$30).

Additional Crit races = \$10

**Team discount: 5 or more riders = \$5 off per rider. (Team is based on license)**

Entry includes \$3 USAC insurance and \$1 KCA surcharge.

One day licensees: (add \$10 for one day license.) (No late fees)

Race day entries add \$5 late fee (per race).

A \$5 late fee is charged if: mailed in registration is postmarked after 27 Apr.

Masters State Title/medals awarded in 5 year age groups starting with 35-39 age grp.

Note: An on-line registration fee is charged.

Or mail a completed standard release & check or cash to:

Tallgrass Classic  
3008 Pecanwood Dr  
Manhattan, KS 66502

(Make checks payable to: Tallgrass Cycling)

	Prizes				
	60/3	100/3	230/3	300/5	A (cash formula)
1st	30	50	100	100	50% of \$5 x entrants
2nd	20	30	80	80	30% of \$5 x entrants
3rd	10	20	50	50	20% of \$5 x entrants
4th				40	
5th				30	

(rounded to nearest whole dollar)

**Over 80 Crit Primes**

Special prize #1: First to register.

Special prize #2: Furthest distance traveled to attend RR.

Frank Kubista (785)477-7371

Email: Frank.Kubista@US.Army.Mil

All USAC rules apply. Racers must have a USAC license to participate. Annual and one day USAC licenses are available for purchase at registration. Racers under 18 must have rider release signed by parent or guardian. CPSC approved helmets required at all times on a moving bicycle. Promoter reserves the right to adjust start times and distances, alter or change courses, remove riders from a race, cancel categories and prize lists as deemed necessary on race days

Thanks to the following:



# Tallgrass Classic 4 & 5 May 2013



Team Discount. You'll get \$5 off per rider for teams with 5 or more riders (as per the team on license). You'll get \$5 cash back after registration. You'll still pay full price if you register on line... but you'll get the discount for each rider once we confirm team numbers. (USA cycling registration isn't set up to offer team discounts)

## Awards.

1. Road Race awards will be awarded at Texas Road House. We'll start at approximately 3 pm on 4 May. All riders and volunteers are welcome!!

- > 10% off food purchase for all riders.
- > \$2 10oz. draws of Tallgrass Ale for all.



2. Crit awards will be awarded soon after each race (once the officials have posted final Race result . I hope this is no longer than 30 minutes after each race.

3. For those folks fortunate (or unfortunate) enough to finish one place out of the money (2<sup>nd</sup> place M60+, or 4<sup>th</sup> place or 6<sup>th</sup> place), you will receive a prize as well. You'll receive a certificate for a free video from "TheSufferFest". This is a training video that may get you (better) prepared for a better race place in the future.



4. Crit premiums. There are 80+ primes !!! Breakdown is as follows:

- 1<sup>st</sup> = \$10 (or equivalent), 2<sup>nd</sup>= \$5, 3<sup>rd</sup>=Bike Inner tube
- 2 x Prime laps for M 60+
- 3 x Prime laps for W35+, M5, M50-59, W1/2/3, W4, M4, M35-49,
- 4 x Prime laps for M1/2/3

5. Special prizes. The two special prizes are variety packs of Tallgrass Beers.

6. On 5 May at the Crit, Texas Road house will be distributing free samples of their pulled pork sandwiches and handing out Free peanuts and Free Appetizer cards to anyone at the race.

## Lodging.

1. Super 8. Centrally located to many of Manhattan's restaurants, and stores.



\$63 + tax for double bed rooms.

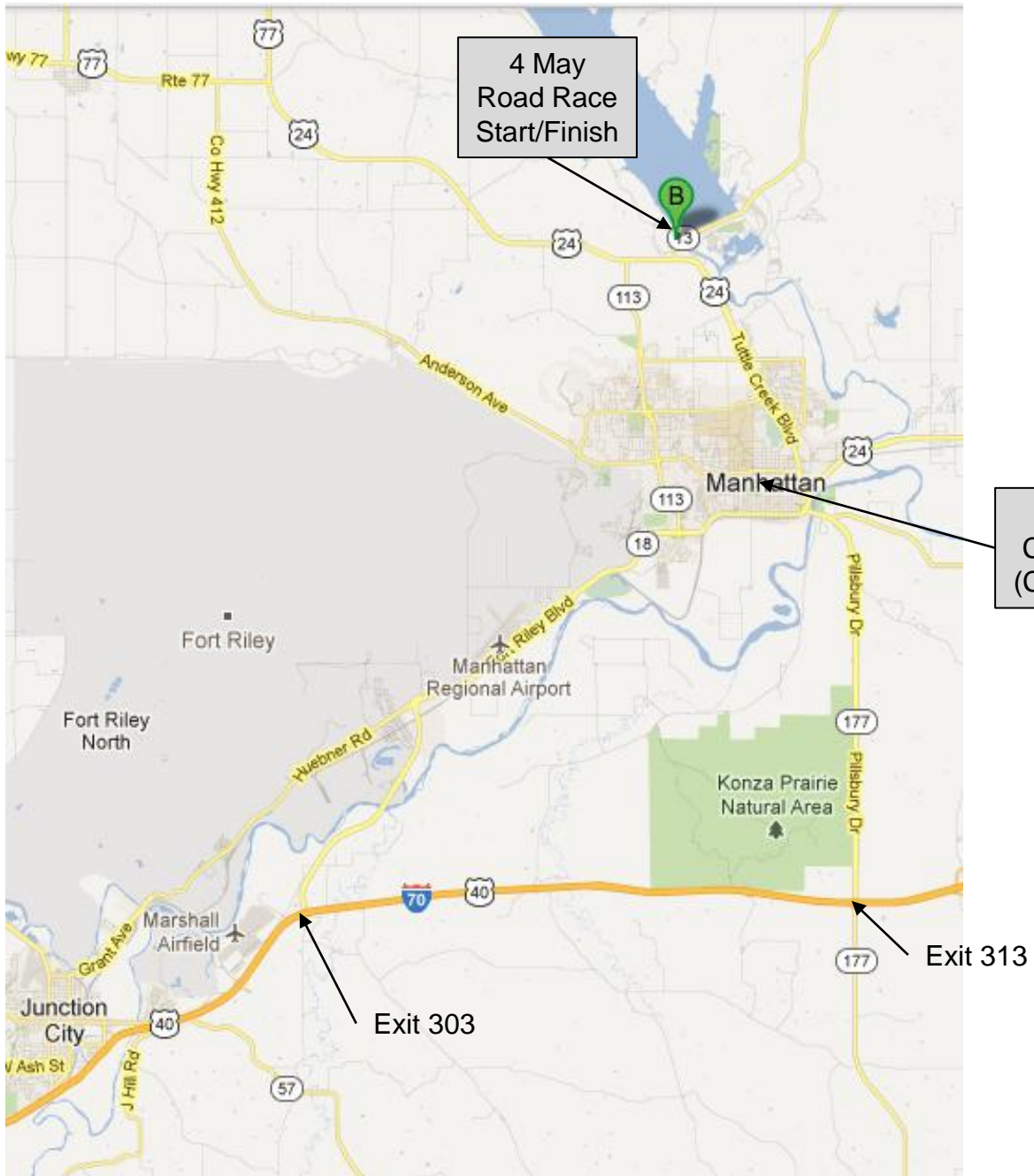
Be sure to tell them you're with the Tallgrass Cycling Event. Continental breakfast is included. (As of 21 Mar, 40 rooms are available)

537-8468 [www.thesuper8.com/03612](http://www.thesuper8.com/03612)

# Tallgrass Classic 4 & 5 May 2013



## Locations



4 May  
Road Race  
Start/Finish

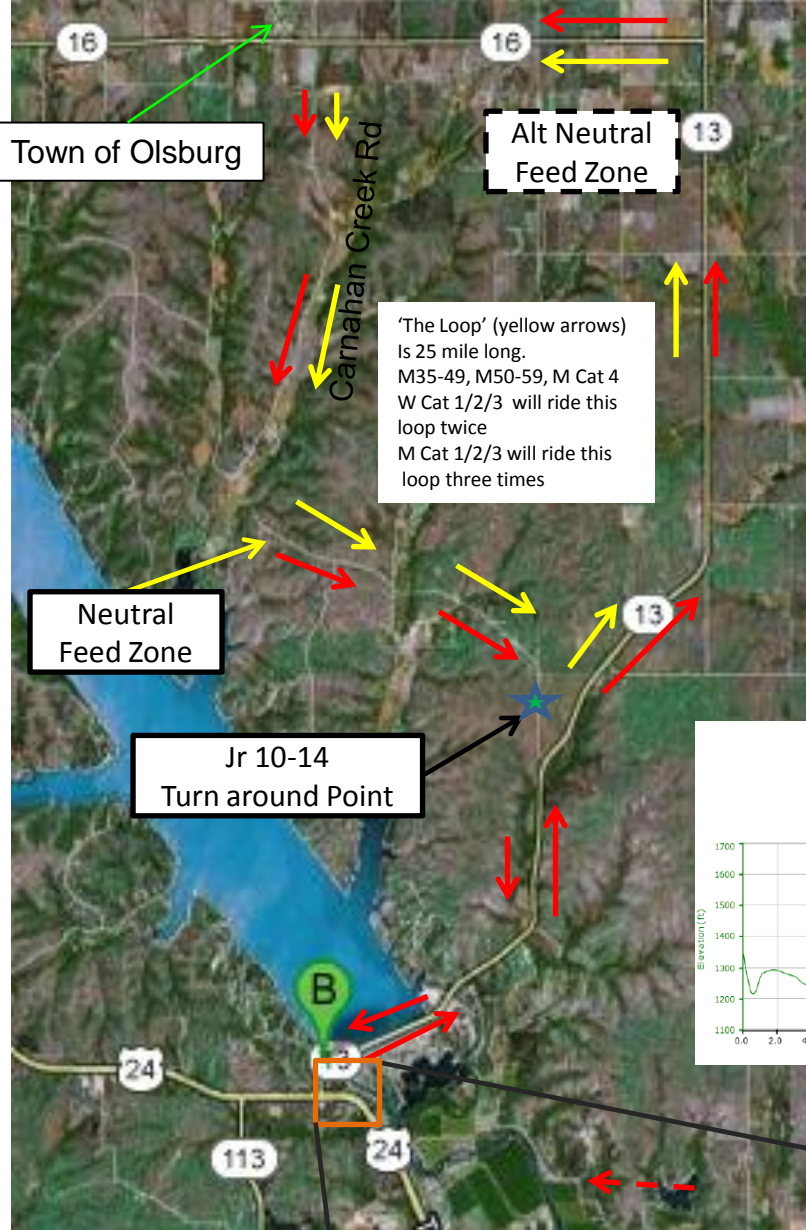
5 May  
Criterium  
(City Park)

Exit 303

Exit 313

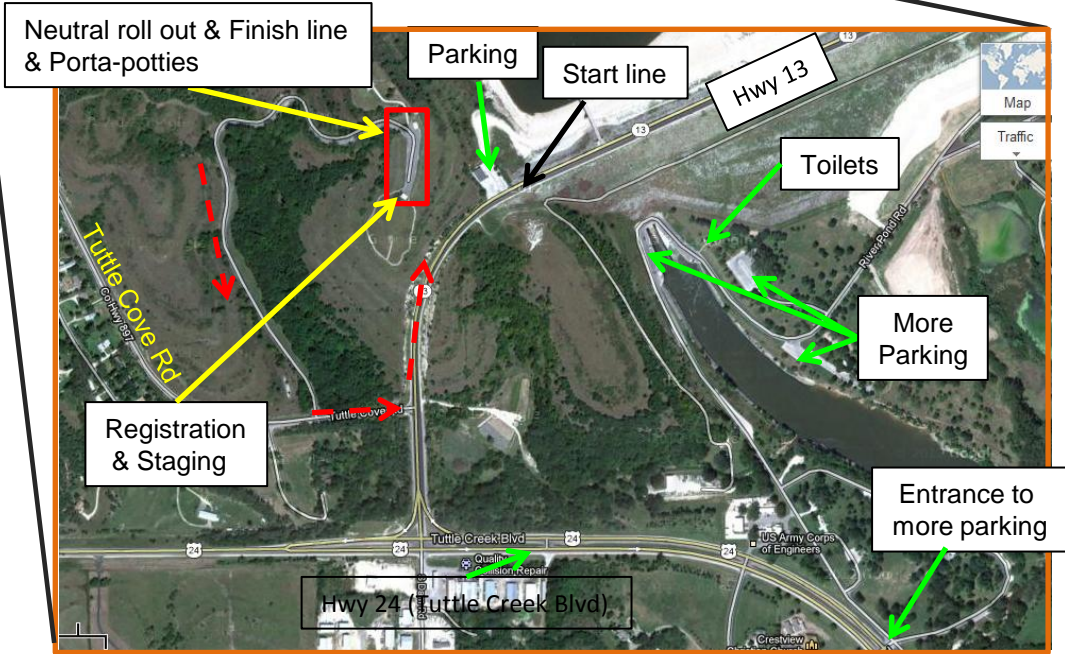
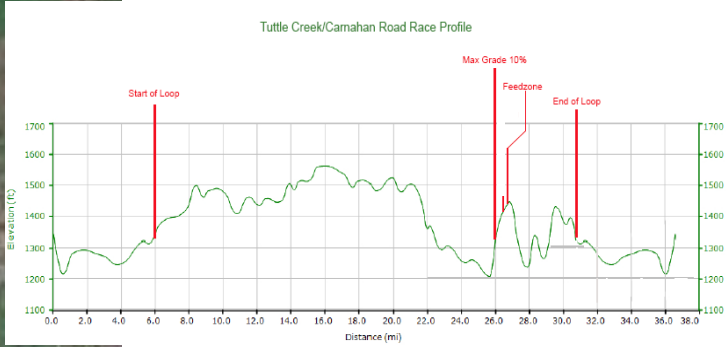
# Tallgrass Classic (Road Race)

4 May 2013



'The Loop' (yellow arrows) is 25 mile long. M35-49, M50-59, M Cat 4 W Cat 1/2/3 will ride this loop twice M Cat 1/2/3 will ride this loop three times

Course description: Good conditioned roadway with small to medium rolling hills along Hwy 13 & 16. The first half of Carnahan Creek Rd is easy riding, the last half has some challenging hills. The finishing leg (last 1/3 mile) is all up hill.



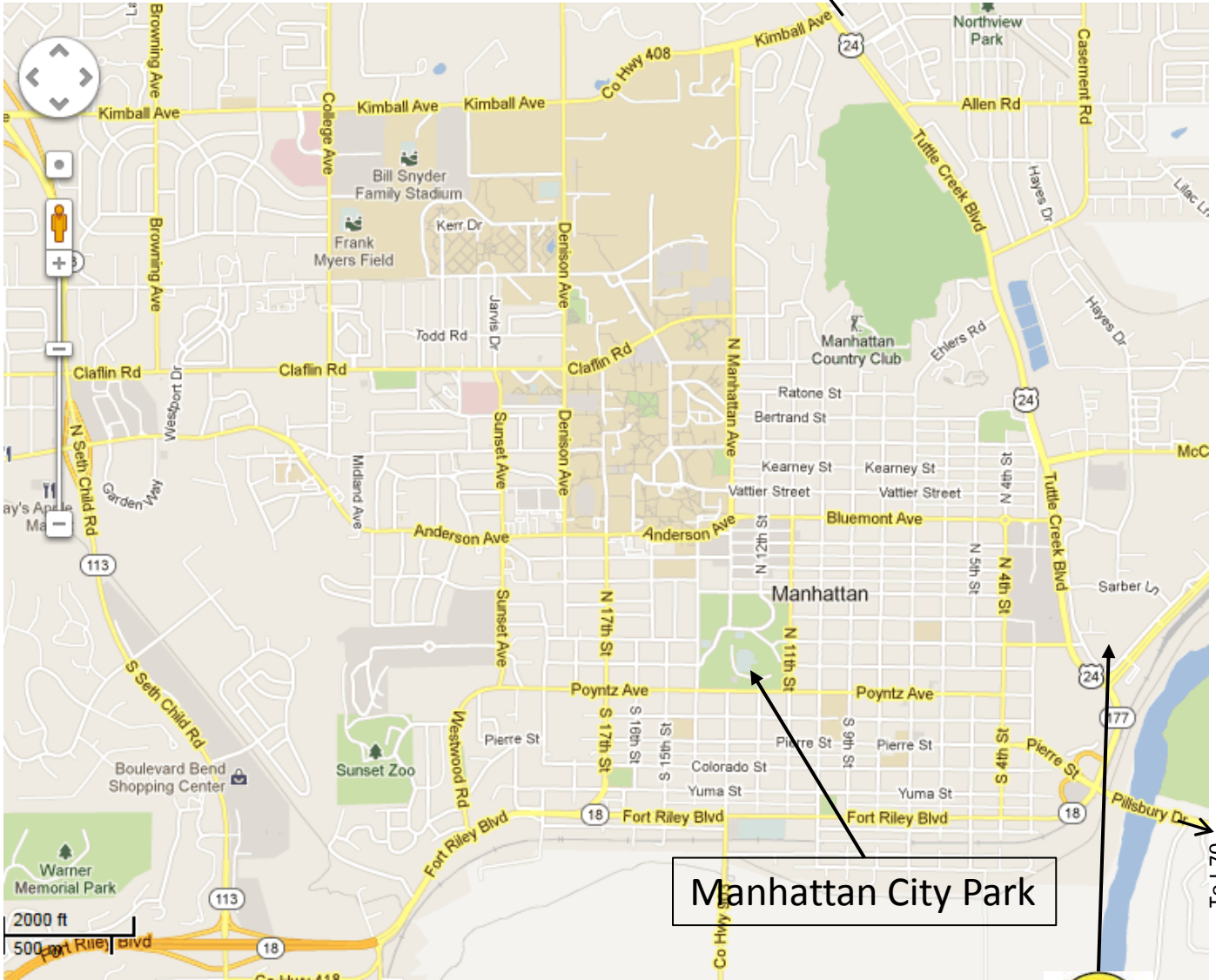
# Tallgrass Classic (Criterium)

5 May 2013



Map

To Road Race

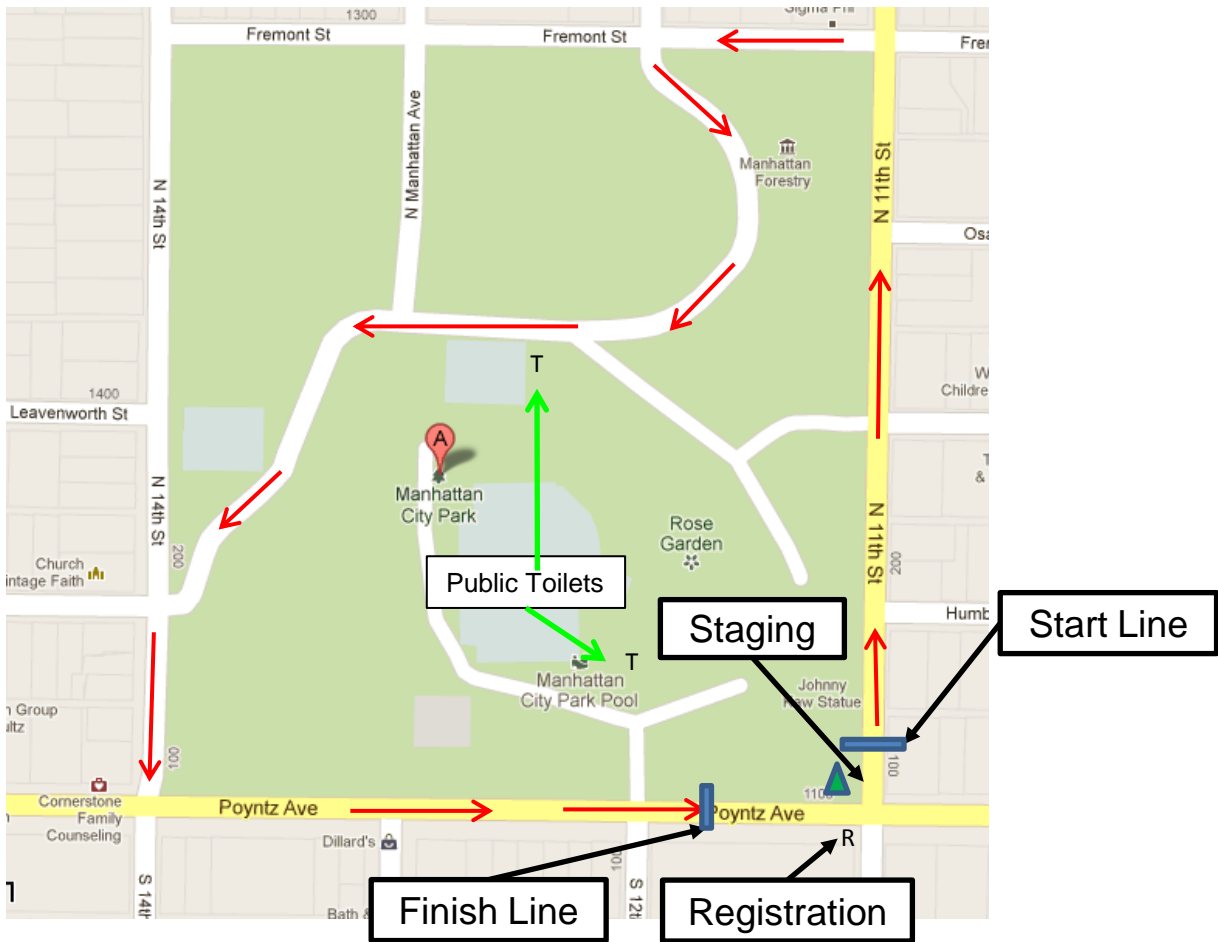


Manhattan City Park



# Tallgrass Classic (Criterium)

5 May 2013



- ➔ Red arrows indicate direction/route of racers
- ▲ 2 x porta-potties

Course description: City streets are in good condition, (slightly crowned). The turn from Fremont Street is sharp. Poyntz Avenue is very wide

Course Profile: Flat.

# Tallgrass Classic (Criterium)

5 May 2013



## Parking

Parking is allowed along most of the streets (both sides).

**Be sure to look for areas that parking is NOT allowed (Yellow painted curb & no parking signs).**



 = Road Barriers

# Tallgrass Classic 4 & 5 May 2013



Sponsors and Donors.

Again, a very big thanks to the following sponsors and donors !



Varney's



- Tyme Out Steakhouse, Junction City
- RC McGraw's/Ramblers, Manhattan, KS
- UMI Japanese Steakhouse, Manhattan, KS
- La Fiesta Mexican Restaurant, Manhattan, KS
- El Tapatio Mexican Restaurant, Junction City, KS
- Ekart's Automotive Service, Manhattan, KS
- Stacy's Restaurant, Junction City, KS