



T E N Z I N G
C R I T E R I U M



Courtyard by Marriott
210 E. Stacy Rd.
Allen, TX, 75002



BICYCLES Plus
www.bicyclesplustx.com



May 26th 2013

USAC Permit 2013-1682

May 26th 2013

Category	Start Time	Time	Entry Fee	Purse	Places	Primes	Field Limit
Cat 4/5	8:00am	40 min	\$35	\$200	5	\$150	75
P/1/2	8:50am	75 min	\$35	\$850	8	\$250	
Masters 50+/60+ Cat 1-4	10:15am	45 min	\$35	\$200	5	\$75	75
Cat 2	11:10am	60 min	\$35	\$600	5	\$150	
Cat 3	12:20pm	60 min	\$35	\$500	6	\$200	
Masters 40+ Cat 1-4	1:30pm	45 min	\$35	\$300	5	\$100	
Women Open	2:25pm	45 min	\$35	\$550	5	\$200	
Women 3/4	3:20pm	40 min	\$35	Awards	5	Prizes	
Cat 4	4:10pm	45 min	\$35	\$350	5	\$100	
Jr Open, Jr 4,5, Jr. women open, Jr women & men10-14	5:05pm	30 min	\$15	Awards	5	\$100	
Masters 35+ (4/5)	5:45pm	45 min	\$35	\$150	3	Prizes	75

Location:

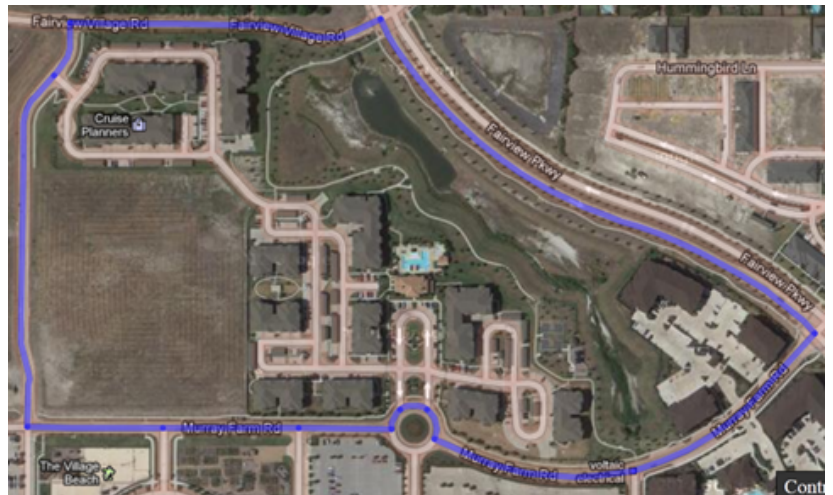
The Village at Fairview,
329 Town Place
Fairview, TX 75069.

The course is 1.1 miles in length with closed roads. New course. Murray Rd. is still the start/finish. Challenging and spectator friendly.

Online registration available at bikereg.com



online service fees apply



General event notes:

A heartfelt thanks to The Shop of Fairview, the Town of Fairview, and **The MGHerring Property Group, LLC** for their graciousness in allowing us to come out and play bike racer for the afternoon. Please show your appreciation by respecting the facilities. **GS TENZING** thanks you for racing.

HELMETS MUST BE WORN AT ALL TIMES WHILE RIDING BICYCLES AT THIS EVENT!

Field maximum and minimum sizes per table. Promoter reserves the right to combine, cancel or reduce prizes/trophies of races that do not meet the minimum number of riders. \$10.00 discount applies to additional races!

Rules:

All USAC rules apply. Rain or shine. Free lap rule in effect. Team wheels in team wheels out. **NO LITTERING.** No warm-up on the course while races in progress (disqualification may occur). Bring rollers or trainers for warm up. Promoter reserves the right to combine or cancel classes/categories/prize lists if minimum field sizes (15) are not met. Free lap rule is in effect until 5 laps from the finish.

**Indicates a single prize list. Scored separately.*

Registration and Fees:

Online registration at bikereg.com is \$35.00. Race day registration is \$45.00. Online registration closes at noon on May 25th

Race day registration opens at 7:00 A.M. and closes 10 minutes before race start. No unattached fees. A \$10 discount will be given for each additional race

Event Contact: Jim Byrd jimbyrd1@gmail.com

