



TA Instruments

Installing TAM Assistant Software™

Installation Instructions

This document describes how to make a new installation of TAM Assistant and how to install an upgraded version of TAM Assistant on an external computer. It also describes how to upgrade TAM Assistant embedded running on TAM III.



TAM Assistant software supports the 32-bit versions of Windows® 2000, Windows® XP, or Windows® Vista Business or Ultimate. The software also supports the 32-bit and 64-bit versions of Windows 7.

Before installing the TAM Assistant software, you should ensure that the computer system meets the following specifications:

Table 1 Computer Requirements.

Description	Recommended
Service Packs* <ul style="list-style-type: none">• Windows 2000• Windows XP• Windows Vista Business• Windows 7 32-bit and 64-bit	Service Pack 4 or higher Service Pack 2 None Service Pack 1 is recommended
File System	NTFS
Processor	Intel Pentium IV, 1.4 GHz with 256kB L2 cache or better
Memory	≥ 1 GB RAM
Hard Drive	≥ 20 GB free on Hard Drive
CD-ROM	Required
Screen Resolution	1024x768 with ≥64K colors
Graphic Memory	128MB



The following Microsoft components are automatically installed as part of TAM Assistant software installation: Windows Installer 3.1 and MS .NET Framework 2.0.

Windows® XP, Windows 7, and Vista are registered trademarks of the Microsoft Corporation.

Important Note about Updating TAM Assistant Software

If the presently-installed TAM Assistant Software version is lower than 1.0, the upgrade process will involve additional changes to the system hardware and software components which must be performed by a TA Instruments Service Engineer. Do not attempt to follow these installation instructions, as they may render the instrument inoperable. Contact TA Instruments to arrange for a service appointment.

Basic Steps for Installation

Follow the steps below to install your software on all computers connected to a TAM III instrument.



The same version of TAM Assistant must be installed on all computers that are connected to TAM III.

- 1 If you are not logged into Windows with Administrator rights, log out and log into Windows with Administrator rights.
- 2 End all running TAM Assistant applications
- 3 Install Operating System Service Pack
- 4 Install Adobe Acrobat Reader Version 8 (if required)
- 5 Uninstall older versions of TAM Assistant
- 6 Install the TAM Assistant software
- 7 Connect to a TAM III instrument.

Detailed Installation Instructions

(1) Install Microsoft Operating System Service Pack Plus Critical Updates

If you don't have the required versions of these packages, they can be obtained through the Microsoft website (at www.Microsoft.com/downloads) or by using the Microsoft Windows Update mechanism (accessed through the Start menu or by accessing <http://update.Microsoft.com>). You can check your Service Pack version by selecting Programs/Accessories/System Tools/System Information from the Start menu.

(2) Install Adobe Acrobat Reader

All of the manuals, application notes, etc. supplied by TA Instruments are supplied in Adobe PDF format. You will need to install the Acrobat Reader to view these files. Install Acrobat Reader from the TAM Assistant Installation CD using the Run menu.

(3) Uninstall Older Versions of TAM Assistant Software

If you have a previous version of TAM Assistant Software on your computer, you will need to uninstall the software before you install the new version. Follow the instructions here.



If you are upgrading your Windows® operating system on a computer that already has the TAM Assistant software installed, you **MUST** uninstall and then reinstall the TAM Assistant software.

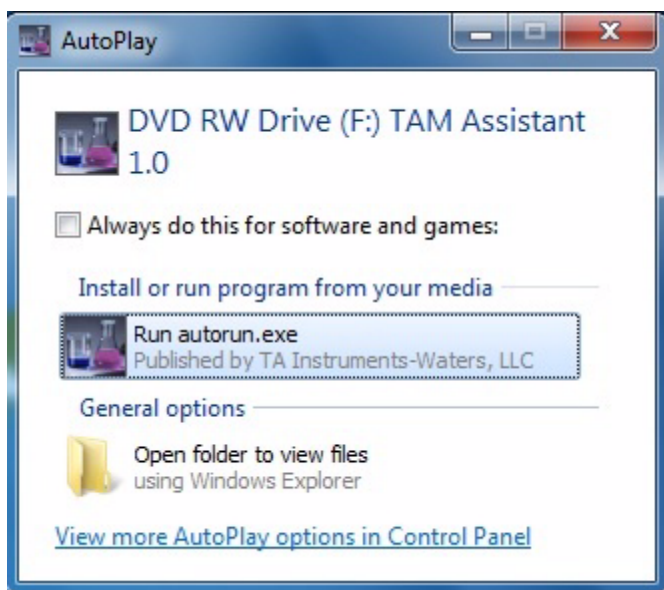
Cleanup from older previous versions:

Follow the steps below to uninstall a current installation of TAM Assistant.

- 1 Select Settings/Control Panel from the Start menu. Open the Add/Remove Programs.
- 2 Select and remove TAM Assistant, if present.
- 3 If older versions of other TAM Assistant products are installed (TAM Assistant Security or TAM Air Assistant), they must be uninstalled as well. After the installation of TAM Assistant is finished the other same version of the other products should be reinstalled (according to their installation instructions).

(4) Install TAM Assistant Software

Once you have completed the steps listed previously, you can install the TAM Assistant software. The TAM Assistant installation screen should appear automatically. You may have to select the AutoPlay option **Run autorun.exe**.



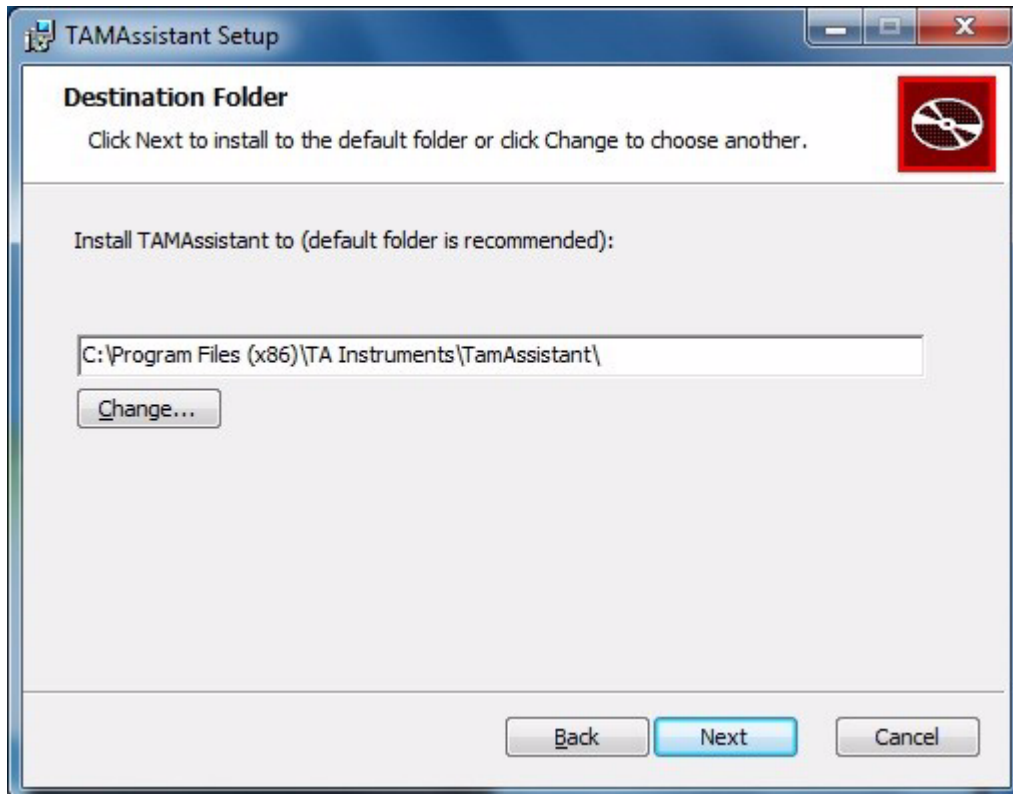
Select Install TAM Assistant and the installation welcome screen will appear. Click **Next** to continue and follow the steps below. If the TAM Assistant installation screen does not appear, run the following set-up program from the CD-ROM: **D:\SETUP.EXE**



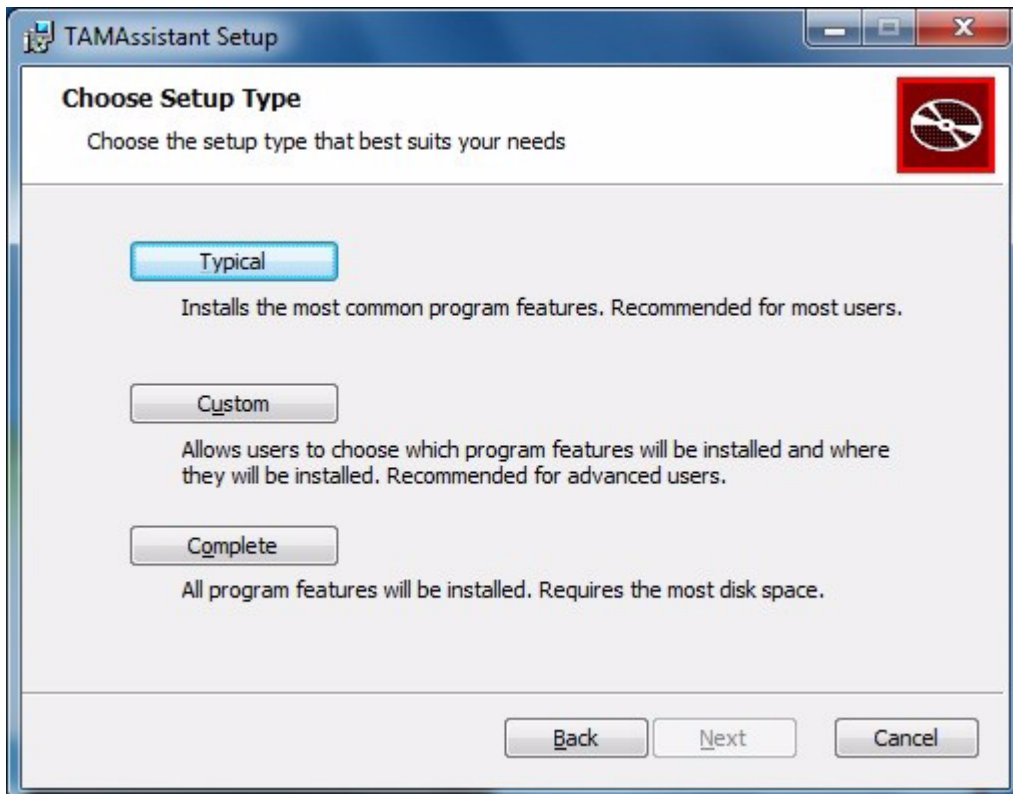
1 In the next form, click **I accept the terms in the License Agreement**. Click **Next** to continue.



- 2 In the next form you must decide about the installation folder. It is recommended that the default path is used. Click **Next** to continue.



- 3 In the next form, select the installation type. **Typical** performs a standard install of the TAM Assistant software. Select **Custom** to include additional components such as the Device Emulator. Do not select **Complete** unless a TAM Air system will be connected to the computer. Click **Next** to continue.



4 If **Custom** installation was selected, the screen below will appear.

- **TAM Assistant Security Manager**

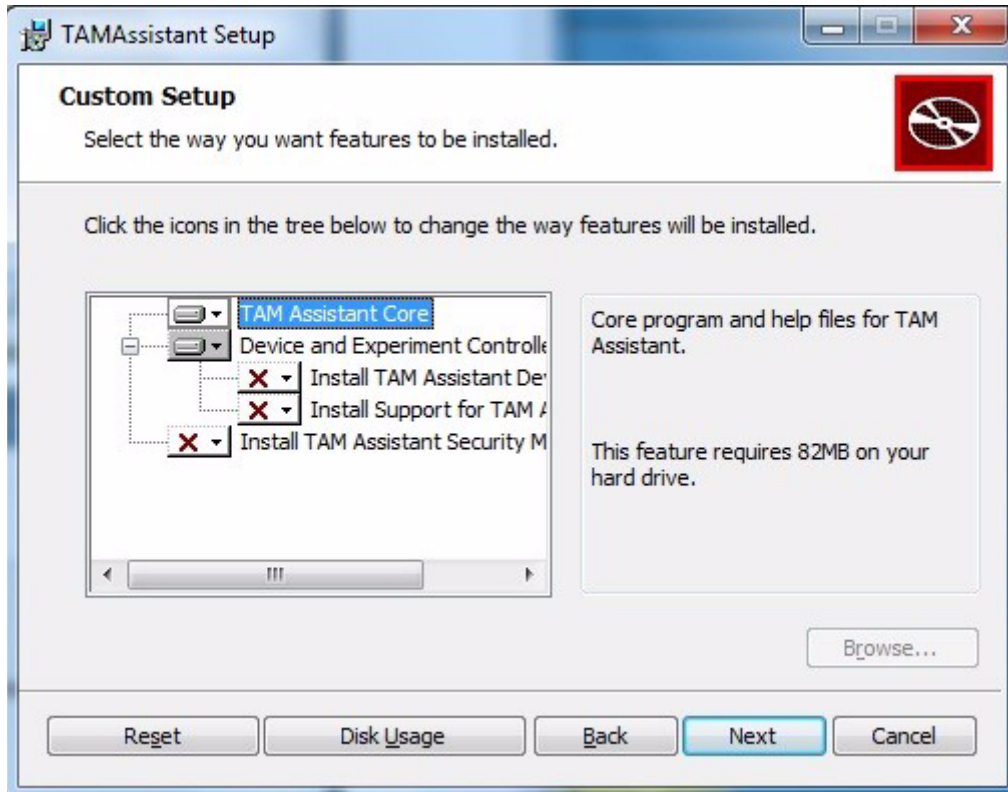
Only needs to be installed if the TAM Assistant security system is used. For more information see the TAM Assistant security documentation.

- **TAM Assistant Device Emulator**

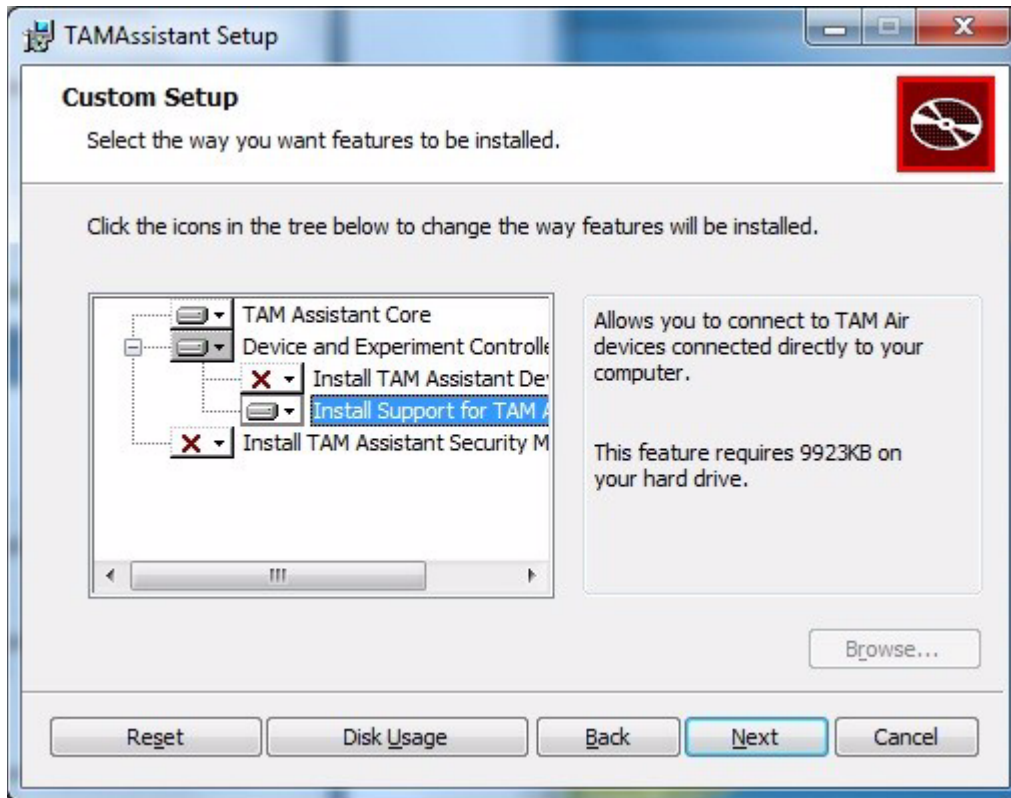
Is used to emulate different types of devices. Install if you want to try the program without connecting to a real instrument.

- **TAM Air Support**

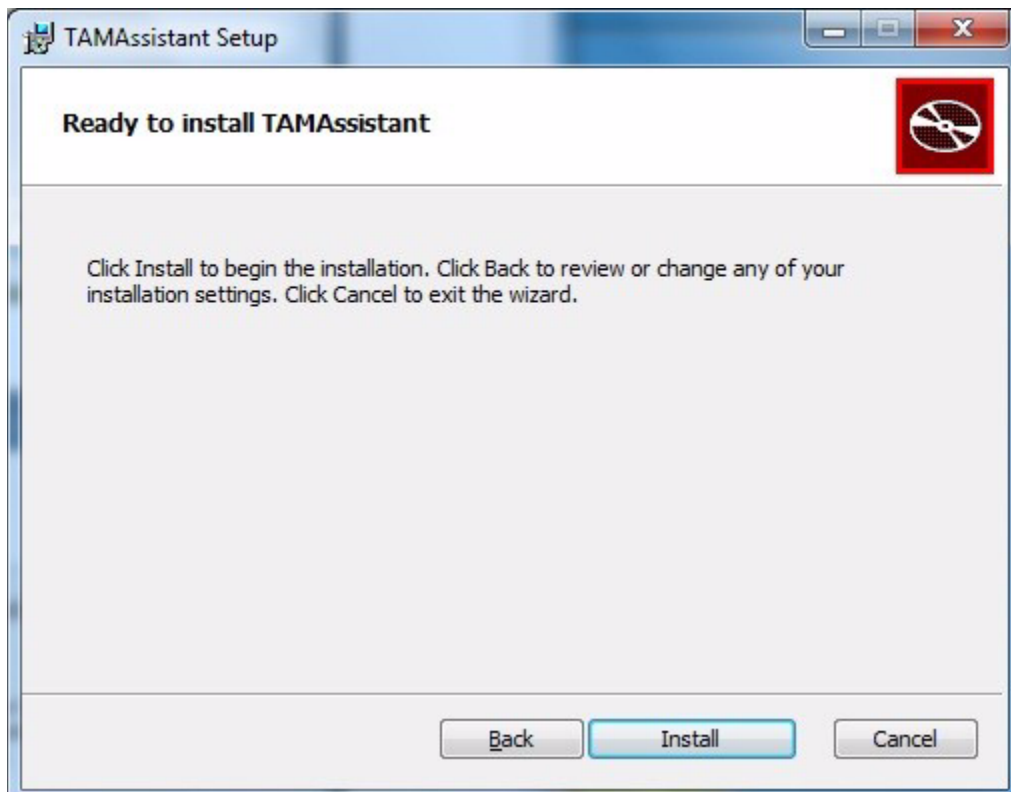
Should only be installed if a TAM Air instrument will be connected to the computer.



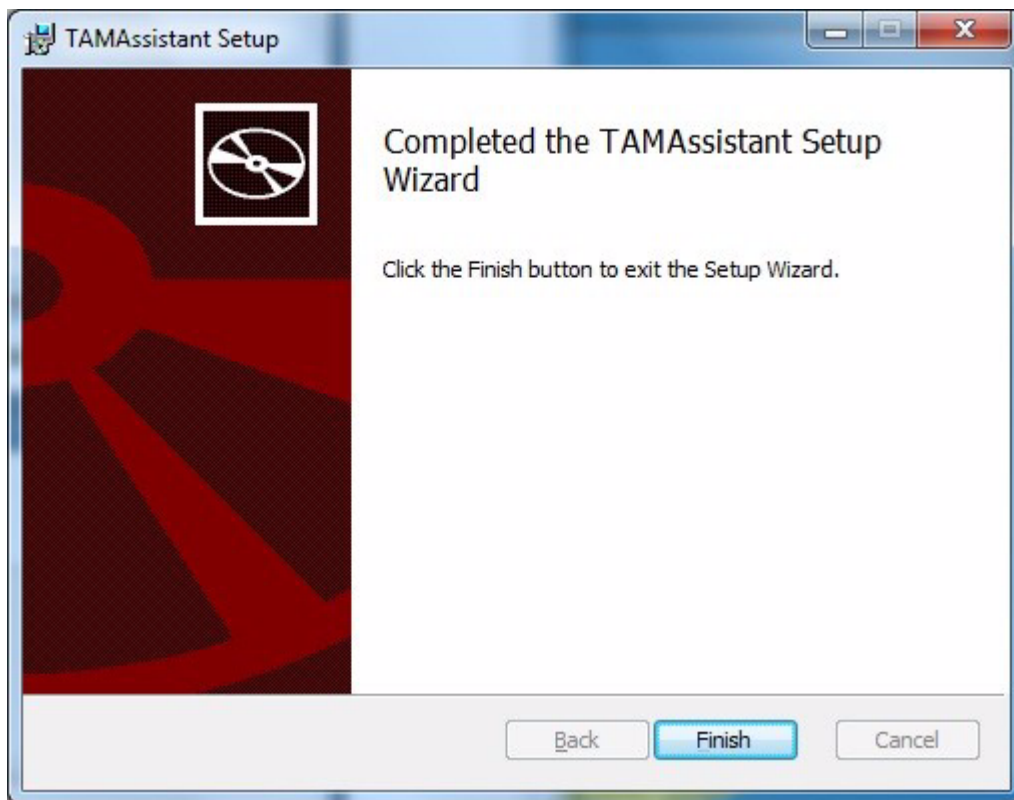
- 5 Click the box **Install Support for TAM Air** and select the option **Entire feature will be installed on the hard drive**.



- 6 The next form informs you that the installation program is ready to install the application - TAM Assistant. Click **Install** to continue.



- 7 A form showing the progress of the installation is shown. When the installation is complete a new form with the text ‘TAM Assistant has been successfully installed’. Click **Finish** to complete the installation.



If you selected the option to include TAM Air support, follow the instructions listed in “Connecting TAM Air to the Computer” in the document “Installing TAM Air Software.”

Installed programs

After the installation the following programs have been installed on the computer and are found under the Program menu of the Start menu.

- **TAM Assistant**
This program is used to run TAM Assistant in normal mode and to connect to supported instruments such as TAM III and TAM Air.
- **TAM Assistant Extras/Device Emulator**
This program can be used to run an emulator that simulates calorimetric experiments. The data collection frequency can be speeded up to reduce the response time. This mode is useful for training purposes to learn about the different functions of the TAM Assistant software
- **TAM Assistant Extras/TAM Assistant Security Manager**
The security manager is used to view and define TAM Assistant security settings. For more information see the TAM Assistant Security documentation.

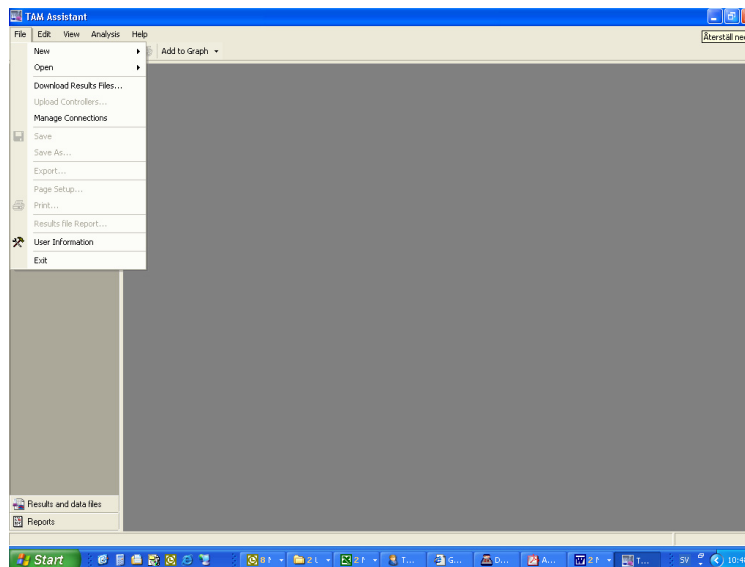
(5) Connect to a TAM III instrument

If TAM Assistant has been installed on an external computer that has not been previously connected to a TAM III, select the TAM III that you wish to connect to using the **Manage Connections** feature under the **File** menu.

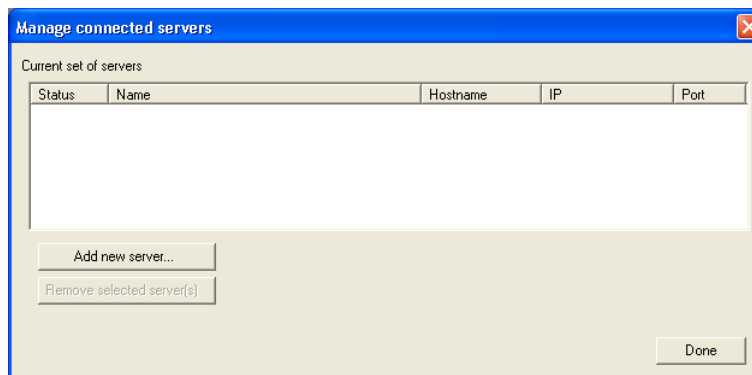
If TAM Assistant has been used to upgrade a computer on which an older version of TAM Assistant has been installed, the old connections to TAM III will be remembered when TAM Assistant is started.

Follow the steps below to connect to a TAM III instrument

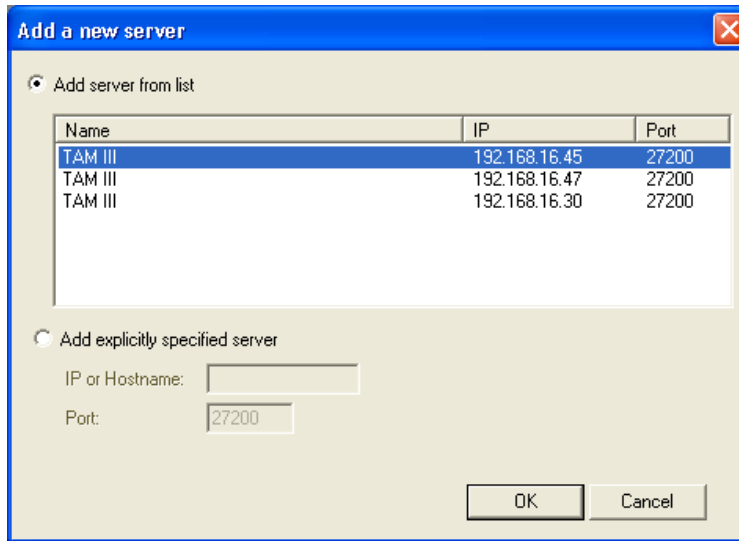
- 1 Select **Start/Program/TAM Assistant**. Select **Manage Connections** from the **File** menu.



- 2 In the **Manage connected servers** click the **Add new server** button.



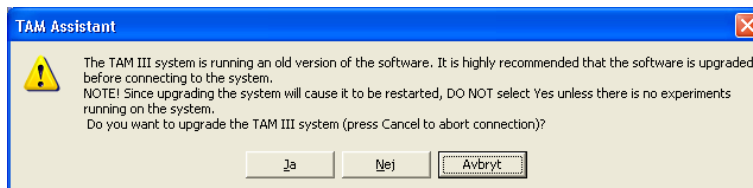
- 3 In the **Add a new server** form, select the TAM III to be connected to and click **OK**.



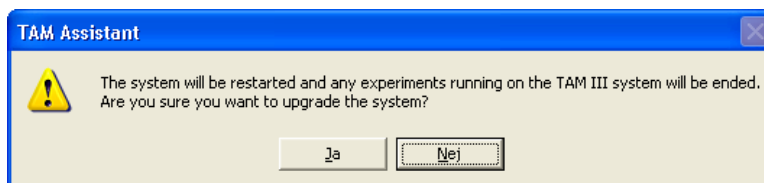
(6) Update the Instrument Software

If TAM Assistant detects that the TAM Assistant version installed on the TAM III instrument is older, you will be notified about this and given the opportunity to upgrade the TAM III software. To upgrade the instrument software, follow the steps below:

- 1 Start TAM Assistant and connect to the TAM II instrument (as described above).
- 2 If an update is necessary you will be notified and asked if you want to upgrade TAM Assistant on the TAM III System. It is highly recommended that the upgrade is accepted by clicking **Yes**.



- 3 You will be informed that TAM III will be restarted and all experiments in progress will be ended. Stop and save any running experiments (if necessary) and click **Yes** to continue.



- 4 The TAM III instrument software will be updated. When the installation is complete, you will see a message with the text 'Update was performed successfully'.

