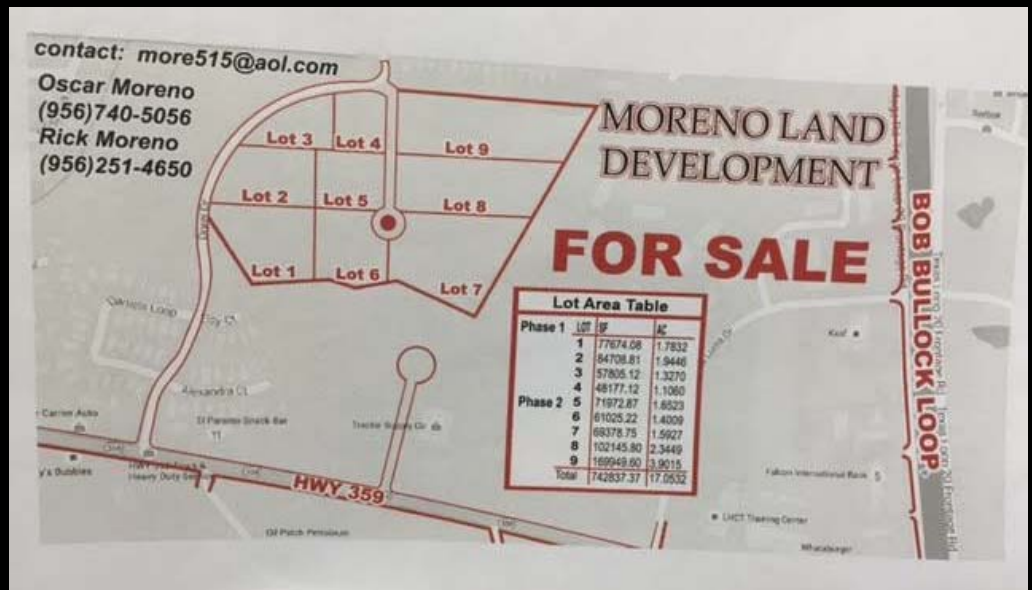


# ROBBIE CASEY COMMERCIAL REALTY

## For Sale 9 LOTS of LAND LAREDO, TEXAS

17 +/- ACRES  
Of  
LAND

Located 1/2 mile  
inside  
NE  
Bob Bullock Loop  
On HWY 359



Robbie Casey  
Commercial Realty

200 E Basse STE 300  
San Antonio, TX



An excellent location for mixed-use development or multi-family residences.



[robbie@robbiecasyrealty.com](mailto:robbie@robbiecasyrealty.com)

(210) 872-8453

# LAREDO LAND FOR SALE

Location next to  
Tractor Supply  
& a future  
Stripes Convenience  
Store

PRICED  
TO  
SELL

Robbie Casey  
Commercial Realty

200 E Basse STE 300  
San Antonio, TX



robbie@robbiecasyrealty.com



These 9 lots of land sit just inside Bob Bullock Loop and Hwy 359, is priced to sell. Located in Southeast Laredo, this site is well positioned for multi-family, restaurants, retail, hotel, medical and numerous other commercial facilities.

Synergy from the 100% leased multifamily development along Hwy 359 near the 17 acre site and the high traffic count also should position this site well for a fast growing commercial area.

**Location:** The property is located in the Southeast area of Laredo, TX inside Bob Bullock Loop & Hwy 359 in a high traffic area near a 500 unit apartment complex, Tractor Supply and a future Stripes Convenience Store.

**Description:** The subject property is 17 +/- acres of the Moreno Section.

**Property Type:** Vacant Land Un-platted

**Highest and Best Use:** Multi-family, retail, office, medical, self-storage and general development

**Access:** Off Hwy 359

Will sub divide

(210) 872-8453