



# VH Series

## 100% 10 hour charger

### High Efficiency charging solutions

No charger is safer for your battery fleet.

### USA Made!

Although ferroresonant technology has been around for many years, improvements are constantly being made and today, our charger boasts a high efficiency, 87% and power factor > .90% close to that of many other manufacturer's high frequency chargers. The charger control monitors the battery throughout the charge and delivers a safe, complete charge to keep your fleet healthy and running!

LATEST TECHNOLOGY!



Standard control  
P46-266



Optional: P46-267  
LED display with status indicator.

INTELENT CHARGING

Constant communication between battery and charger for perfect charge every time. No under or overcharge even with a +6/-10 % AC line.

Underwriters Labs and ULc listed.

#### BENEFITS

- Trustworthy ferroresonant technology.
- Easy field maintenance – non proprietary.
- Recharges 100% discharged battery in 10 hours or less.
- Long operating life: 10+ years.
- Low cost of ownership.

#### FEATURES

- Available in all AC voltages, single and three phase.
- Fail Safe charge for your battery.
- Rugged case stackable to three high.
- Fully automatic.
- Easy access to tap settings for quick changeover.



Ferro Magnetics Corp  
 4328 Bridgeton Industrial Drive  
 Bridgeton, Missouri 63044

Phone: 314-739-1414  
 Fax: 314-739-1277  
 E-mail: sales@ferromc.com  
 www.ferromc.com



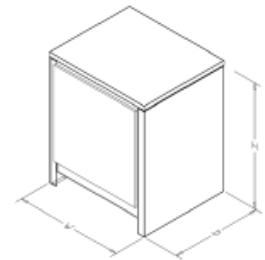
# Charger selector Guide

SINGLE PHASE										THREE PHASE						
Cell	Amp hr. Rating	Range	Model	DC Amp output	AC Input Amps				Case	Model	DC Amp output	AC Input Amps				Case
					120	208	240	480				208	240	480	600	
6	260	181-260	VHS6-260*	41	6	3.5	3	1.5	550							
6	380	261-380	VHS6-380*	60	8.8	5.1	4.4	2.2	550	VHT6-380*						
6	475	381-475	VHS6-475*	75	11	6	5.5	2.8	550	VHT6-475*	75	3.75	3.2	1.6	1.3	551
6	600	476-600	VHS6-600*	95	14	8.1	7	3.5	550	VHT6-600*	95	4.7	4	2	1.6	551
6	750	601-750	VHS6-750*	119	17.4	10.1	8.7	4.4	550	VHT6-750*						
6	865	751-865	VHS6-865*	137	20.2	11.6	10.1	5	550	VHT6-865*						
6	965	866-965	VHS6-965*	152	22.4	13	11.2	5.6	550	VHT6-965*						
6	1050	966-1050														
12	260	181-260														
12	380	261-380	VHS12-380*	60	17.6	10.2	8.8	4.4	550							
12	475	381-475	VHS12-475*	75	22	12.7	11	5.5	550	VHT12-475*	75	7.4	6.4	3.2	2.6	551
12	600	476-600	VHS12-600*	95	28	16.1	14	7	550	VHT12-600*	95	9.3	8.1	4	3.2	551
12	750	601-750	VHS12-750*	119		20.2	17.5	8.7	550	VHT12-750*	119	11.7	10.1	5.1	4.1	551
12	865	751-865	VHS12-865*	137		23.2	20.1	10.1	551	VHT12-865*	137	13.4	11.6	5.8	4.6	551
12	965	866-965	VHS12-965*	152		26	22.5	11.2	551	VHT12-965*	152	14.9	12.9	6.5	5.2	551
12	1050	966-1050								VHT12-1050	166	16.3	14.1	7.1	5.7	551
12	1200	1051-1200								VHT12-1200	190	18.6	16.1	8.1	6.5	551
18	260	181-260														
18	380	261-380														
18	475	381-475	VHS18-475*	75	-	19.1	16.5	8.3	550	VHT18-475*	75	11	9.6	4.8	3.8	551
18	600	476-600	VHS18-600*	95	-	24.2	20.9	10.5	551	VHT18-600*	95	14	12.1	6.1	4.9	551
18	750	601-750	VHS18-750*	119	-	30.3	26.2	13.1	551	VHT18-750*	119	17.5	15.2	7.6	6.1	551
18	865	751-865	VHS18-865*	137	-	34.9	30.2	15.1	551	VHT18-865*	137	20.1	17.5	8.7	7	551
18	965	866-965	VHS18-965*	152	-	38.7	33.5	16.8	551	VHT18-965*	152	22.4	19.4	9.7	7.8	551
18	1050	966-1050								VHT18-1050	166	24.4	21.2	10.6	8.5	551
18	1200	1051-1200								VHT18-1200	190	27.9	24.2	12.1	9.7	551
18	1450	1201-1450								VHT18-1400	22	32.4	28	14	11.2	552
24	260	181-260														
24	380	261-380	VHS24-380*	60	-	20.4	17.6	8.8	550	VHT24-380*	60	11.8	10.2	5.1	4.1	551
24	475	381-475	VHS24-475*	75		25.4	22.1	11	551	VHT24-475*	75	14.7	12.7	6.4	5.1	551
24	600	476-600	VHS24-600*	95		32.2	27.9	14	551	VHT24-600*	95	18.6	16.1	8.1	6.5	551
24	750	601-750	VHS24-750*	119		40.4	35	17.5	551	VHT24-750*	119	23.3	20.2	10.1	8.1	551
24	865	751-865	VHS24-865*	137		46.5	40.3	20.1	551	VHT24-865*	137	26.9	23.3	11.6	9.3	551
24	965	866-965							551	VHT24-965*	152	29.8	25.8	12.9	10.3	551
24	1050	966-1050								VHT24-1050	166	32.6	28.2	14.1	11.3	551
24	1200	1051-1200								VHT24-1200	190	37.3	32.3	16.1	12.9	552
24	1450	1201-1450								VHT24-1400	220	43.1	37.4	18.7	15	552
40	475	381-475	VHS40-475*	75		25.4	22.1	11	551							
40	600	476-600								VHT40-600*	95	31	26.9	13.5	10.8	552
40	750	601-750								VHT40-750*	119	38.9	33.7	16.9	13.5	552
40	865	751-865								VHT40-865*	137	44.8	38.8	19.4	15.5	552

\* Requires AC voltage code

AC Voltage	1Φ	3Φ
120/208/240	A	N/A
208/240/480	B	B
480/575	K	K
600	AG	AG

CASE DIMENSIONS						
CASE	HEIGHT		WIDTH		DEPTH	
	IN	CM	IN	CM	IN	CM
500	20.5	52.0	17.3	44.0	14.8	37.6
501	26.0	66.0	24.3	61.7	24.6	65.5
502	28.0	71.1	38.3	97.2	27.6	70.1



Ferro Magnetics Corp  
4328 Bridgeton Industrial Drive  
Bridgeton, Missouri 63044

Phone: 314-739-1414  
Fax: 314-739-1277  
E-mail: sales@ferromc.com  
www.ferromc.com