



# HP Series

## 80% 8 hour charger

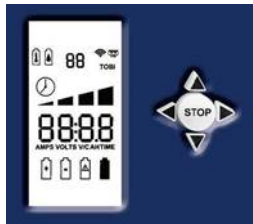
### High Efficiency charging solutions

No charger is safer for your battery fleet.

### USA Made!

Although ferroresonant technology has been around for many years, improvements are constantly being made and today, our charger boasts a high efficiency, 87% and power factor > .90% close to that of many other manufacturer's high frequency chargers. Sophisticated charge control monitors battery throughout the charge and delivers a safe, complete charge to keep your fleet healthy and running!

LATEST TECHNOLOGY!



P46-301 Control Icon and Alpha-numeric display

INTELENT CHARGING

Constant communication between battery and charger for perfect charge every time. No under or overcharge even with a +6/-10 % AC line.

Graphic Icon display allows quick identification of charge status and "ready" battery.

Fully recharge 80% discharged battery in 8 hours or less .

Underwriters Labs and ULc listed.



BENEFITS

- Trustworthy ferroresonant technology.
- Easy field maintenance – non proprietary.
- Long operating life: 10+ years.
- Low cost of ownership.

FEATURES

- Available in all AC voltages, single and three phase.
- "Smart" Charge Control with Icon and digital display.
- Fail Safe charge for your battery.
- Rugged case stackable to three high.
- Fully automatic.
- Easy access to tap settings for quick changeover.



Charging Technologies, Inc.  
4328 Bridgeton Industrial Drive  
Bridgeton, Missouri 63044

Phone: 314-739-1414  
Fax: 314-739-1277  
E-mail: sales@chargingti.com  
www.chargingtechnologiesinc.com



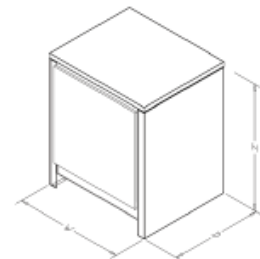
# Charger selector Guide

SINGLE PHASE										THREE PHASE						
Cell	Amph. Rating	Range	Model	DC Amp output	AC Input Amps				Case	Model	DC Amp output	AC Input Amps				Case
					120	208	240	480				208	240	480	600	
6	260	181-260	HPS6-260*	38	5.3	3.1	2.7	1.3	500							
6	380	261-380	HPS6-380*	56	7.8	4.5	3.9	2	500							
6	475	381-475	HPS6-475*	70	10.3	5.9	5.1	2.6	500	HPT6-475*	70	3.4	3	1.5	1.2	501
6	600	476-600	HPS6-600*	89	13.1	7.5	6.5	3.3	500	HPT6-600*	89	4.2	3.6	1.8	1.4	501
6	750	601-750	HPS6-750*	111	16.4	9.4	8.2	4.1	500	HPT6-750*	111	5.4	4.7	2.4	1.9	501
6	865	751-865	HPS6-865*	128	18.8	10.9	9.4	4.7	500	HPT6-865*	128	6	5.2	2.6	2.1	501
6	965	866-965	HPS6-965*	142	19.9	11.5	9.9	5	500	HPT6-965*	142	6.6	5.7	2.9	2.3	501
6	1050	966-1050								HPT6-1050*	155	7.2	6.3	3.1	2.5	501
12	260	181-260	HPS12-260*	38	11.2	6.5	5.6	2.8	500	HPT12-260*	38	3.7	3.2	1.6	1.3	501
12	380	261-380	HPS12-380*	56	16.5	9.5	8.2	4.1	500	HPT12-380*	56	5.5	4.8	2.4	1.9	501
12	475	381-475	HPS12-475*	70	20.6	11.9	10.3	5.2	500	HPT12-475*	70	6.9	5.9	3	2.4	501
12	600	476-600	HPS12-600*	89	26.2	15.1	13.1	6.5	500	HPT12-600*	89	8.7	7.6	3.8	3	501
12	750	601-750	HPS12-750*	111	-	18.8	15.3	8.2	500	HPT12-750*	111	10.9	9.4	4.7	3.8	501
12	865	751-865	HPS12-865*	128	-	21.7	18.8	9.4	500	HPT12-865*	128	12.5	10.9	5.4	4.4	501
12	965	866-965	HPS12-965*	142	-	24.1	20.9	10.4	501	HPT12-965*	142	13.9	12.1	6	4.8	501
12	1050	966-1050								HPT12-1050*	155	15.2	13.2	6.6	5.3	501
12	1200	1051-1200								HPT12-1200*	177	17.4	15	7.5	6	501
12	1450	1201-1450								HPT12-1450*	214	20	17.3	8.7	7	501
12	1750	1451-1750								HPT12-1750*	258	24.1	20.9	10.4	8.3	502
18	260	181-260	HPS18-260*	38	16	9.3	8	4	500							
18	380	261-380	HPS18-380*	56	24.6	14.2	12.3	6.2	500	HPT18-380*	56	8.2	7.1	3.6	2.9	501
18	475	381-475	HPS18-475*	70	-	17.8	15.4	7.7	500	HPT18-475*	70	9.8	8.5	4.2	3.4	501
18	600	476-600	HPS18-600*	89	-	22.6	19.6	9.8	501	HPT18-600*	89	13.1	11.3	5.7	4.6	501
18	750	601-750	HPS18-750*	111	-	28.2	24.5	12.2	501	HPT18-750*	111	16.3	14.1	7.1	5.7	501
18	865	751-865	HPS18-865*	128	-	32.6	28.2	14.1	501	HPT18-865*	128	18.8	16.3	8.2	6.6	501
18	965	866-965	HPS18-965*	142	-	36.1	31.3	15.7	501	HPT18-965*	142	20.9	18.1	9	7.2	501
18	1050	966-1050	HPS18-1050*	154	-	39.4	34.2	17.1	501	HPT18-1050*	155	22.8	19.8	9.9	7.9	501
18	1200	1051-1200								HPT18-1200*	177	26	22.6	11.3	9	501
18	1450	1201-1450								HPT18-1450*	214	31.5	27.3	13.6	10.9	502
18	1750	1451-1750								HPT18-1750*	258	36.1	31.3	15.7	12.6	502
24	260	181-260	HPS24-260*	38	21.3	12.3	10.7	5.4	500							
24	380	261-380	HPS24-380*	56	-	19.6	16.5	8.2	501	HPT24-380*	56	11	9.4	4.8	3.8	501
24	475	381-475	HPS24-475*	70	-	23.7	20.6	10.3	501	HPT24-475*	70	13.7	11.9	5.9	4.7	501
24	600	476-600	HPS24-600*	89	-	30.2	26.2	13.1	501	HPT24-600*	89	17.5	15.1	7.6	6	501
24	750	601-750	HPS24-750*	111	-	37.7	32.6	16.3	501	HPT24-750*	111	21.8	18.9	9.4	7.6	501
24	865	751-865	HPS24-865*	128	-	43.4	37.6	18.8	501	HPT24-865*	128	25.1	21.8	10.9	8.7	501
24	965	866-965	HPS24-965*	142	-	48.2	41.7	20.9	501	HPT24-965*	142	27.8	24.1	12.1	9.7	501
24	1050	966-1050								HPT24-1050*	155	30.4	26.3	13.2	10.6	501
24	1200	1051-1200								HPT24-1200*	177	34.7	30.1	15	12	502
24	1450	1201-1450								HPT24-1450*	214	40	34.6	17.3	13.8	502
24	1750	1451-1750								HPT24-1750*	258	-	-	20.9	16.7	502
40	475	381-475								HPT40-475*	70	22.9	19.8	9.9	7.9	501
40	600	476-600								HPT40-600*	89	29.1	25.2	12.6	10.1	501
40	750	601-750								HPT40-750*	111	36.3	31.4	15.7	12.6	502
40	865	751-865								HPT40-865*	128	39.8	34.5	17.3	13.8	502

\* Requires AC voltage code

AC Voltage	1Φ	3Φ
120/208/240	A	N/A
208/240/480	B	B
480/575	K	K
600	AG	AG

CASE DIMENSIONS							
CASE	HEIGHT		WIDTH		DEPTH		
	IN	CM	IN	CM	IN	CM	
500	20.5	52.0	17.3	44.0	14.8	37.6	
501	26.0	66.0	24.3	61.7	24.6	65.5	
502	28.0	71.1	38.3	97.2	27.6	70.1	



Charging Technologies, Inc.  
4328 Bridgeton Industrial Drive  
Bridgeton, Missouri 63044

Phone: 314-739-1414  
Fax: 314-739-1277  
E-mail: sales@chargingti.com  
www.chargingtechnologiesinc.com